

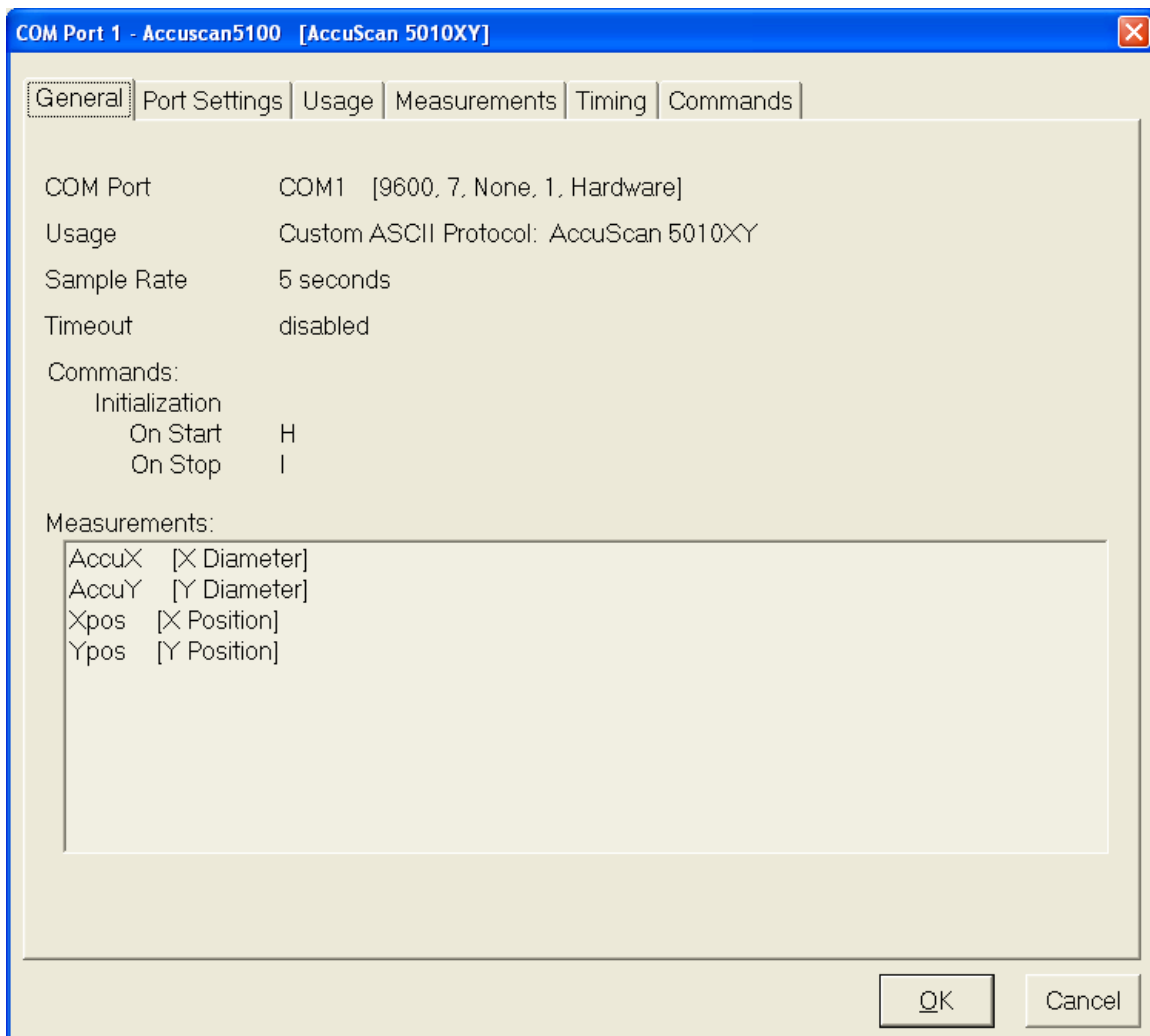
LaserLinc TotalVu

Quick Start Set-Up for Accuscan 5010

July 28th, 2010

LaserLinc, Inc
777 Zapata Drive
Fairborn, OH 45324
888-707-4852 Toll Free
937-318-2440 Voice
937.318.2445 FAX
<http://www.laserlinc.com/>

In Full Configure Select *Serial I/O* And complete wizard as shown below. Your COM port may be different depending on available ports in your PC.



COM Port 1 - Accuscan5100 [AccuScan 5010XY]

General | **Port Settings** | Usage | Measurements | Timing | Commands

COM Port

Select the Serial Port. Total Vu works with any serial port that appears in the Ports category of the operating system's Device Manager.

- COM1
- COM4

Settings

Select settings to match the device connected to the port. Refer to the documentation for the device or contact the manufacturer if you are unsure of the device's settings.

Use Device Manager Settings

- Baud Rate** 9600
- Data Bits** 7
- Parity** None
- Stop Bits** 1
- Flow Control** Hardware

Load Settings for COM1 from Device Manager

OK Cancel



General | Port Settings | Usage | Measurements | Timing | Commands

Usage

Select how the port will be utilized. With Modbus, multiple devices may be connected and there can be any mix of device types including multiple of the same type. With Modbus and ASCII, the input measurements are defined on the next tab.

- Disabled
- Output
- Modbus RTU
- Custom ASCII Protocol

Device Name

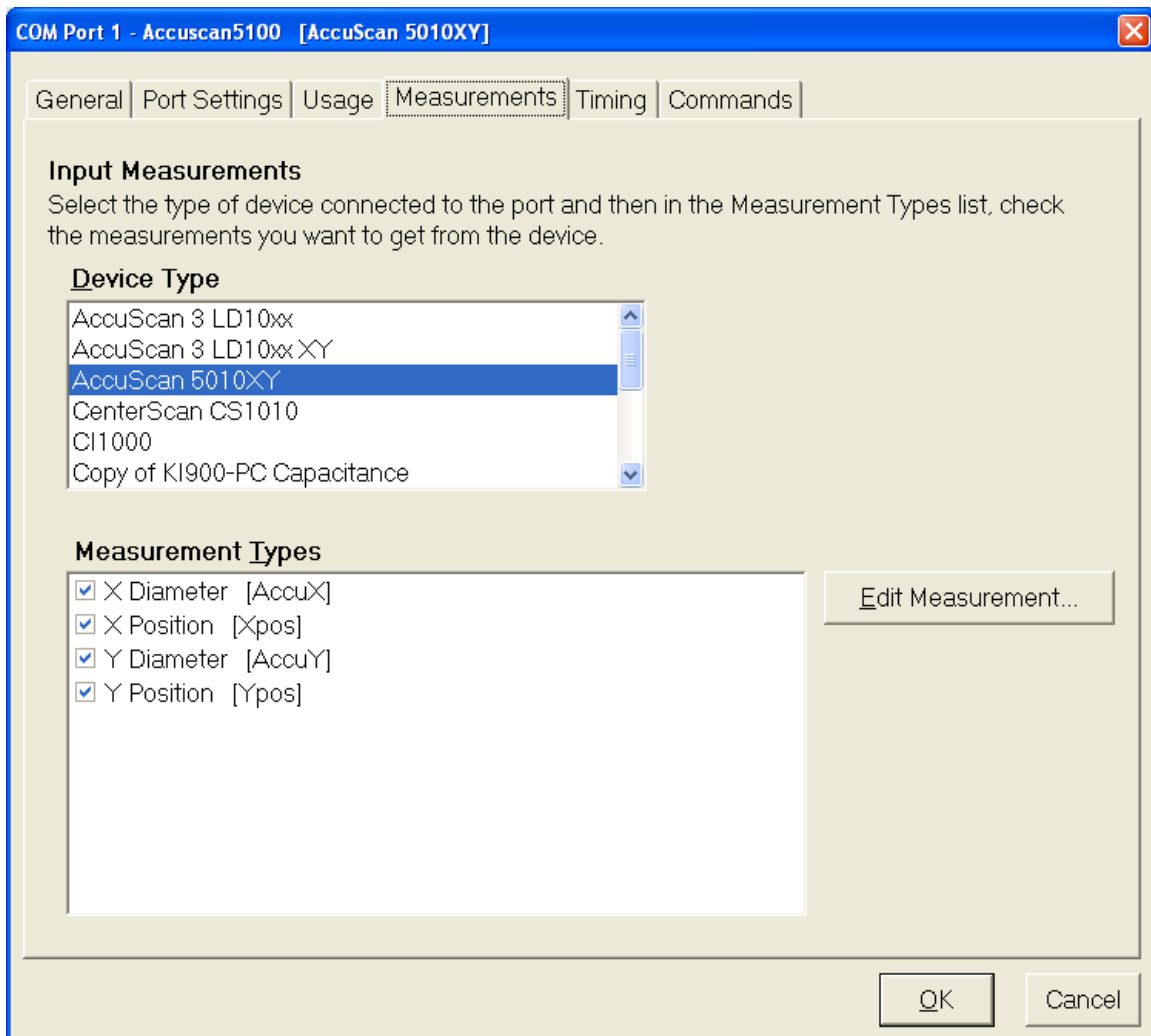
Enter the name for the new device. It must begin with a letter or a digit. [] or | are illegal. The name may be up to 30 characters in length and it must be unique. It cannot match any of the names listed below.

Existing Device Names

OK

Cancel

1. Select Accuscan 5010XY
2. Select all available measurements
3. Select Edit Measurements & complete Wizard for each measurement



Number to Average

Enter the number of measurement values received from the device to collect and average before reporting a new measurement value.

Running Average

If checked, the value reported will be the average of a user-specified number of the most recent measurements.

 Use Running Average**Resolution**

Select the number of places to display in the measurement value to the right of the decimal point.

Decimal Point Placement

Select the position of the decimal point in the ASCII data received from the device.

Examples [received text = "12345"]: 1 will result in 0.12345; 3 will result in 12.345; 0 will revert to the default in the Device file.

Offset

When the Use Offset box is checked the value below is added to the computed value of the function before it is reported. A negative Offset results in a smaller final measurement value.

 Use Offset

OLD Status Error

The OLD status condition is used to report when the attribute value is stale or too old. If enabled, the condition becomes true when the attribute value remains unchanged for at least the specified amount of time.

Enable OLD Status Error



SPC Plans

Select each SPC Sampling Plan that will maintain statistics for this measurement.

- Standard SPC

<< Back Next >> Cancel



Measurement Name

Enter the name for the new measurement. It must begin with a letter or a digit. [] or | are illegal. The name may be up to 30 characters in length and it must be unique. It cannot match any of the names listed below.

Xdia

Existing Measurements (shown for convenience)

Xdia

<< Back Finish Cancel



General | Port Settings | Usage | Measurements | **Timing** | Commands

Sample Rate

If the device does not transmit data automatically and its measurement values must be requested every time, enter how often to sample the measurements from the device. The system will sample each of the measurements sourced from the device once in this time period. If this is left blank or you enter a value of zero [0], the system will poll the device as fast as possible.

IMPORTANT: if this value is too low or zero, polling the device can actually cause the device to fail to operate properly.

seconds

Timeout

After sending a request to the device for a value, enter the maximum amount of time to wait for a response before assuming failure.

Use Timeout

OK

Cancel

1. Select 'Load Default Commands from Device Definition File' button
2. Ensure "H" & "I" commands are automatically enter as shown below

