

# LaserLinc TotalVu

## Quick Start Set-Up for Sikora 2000 XY

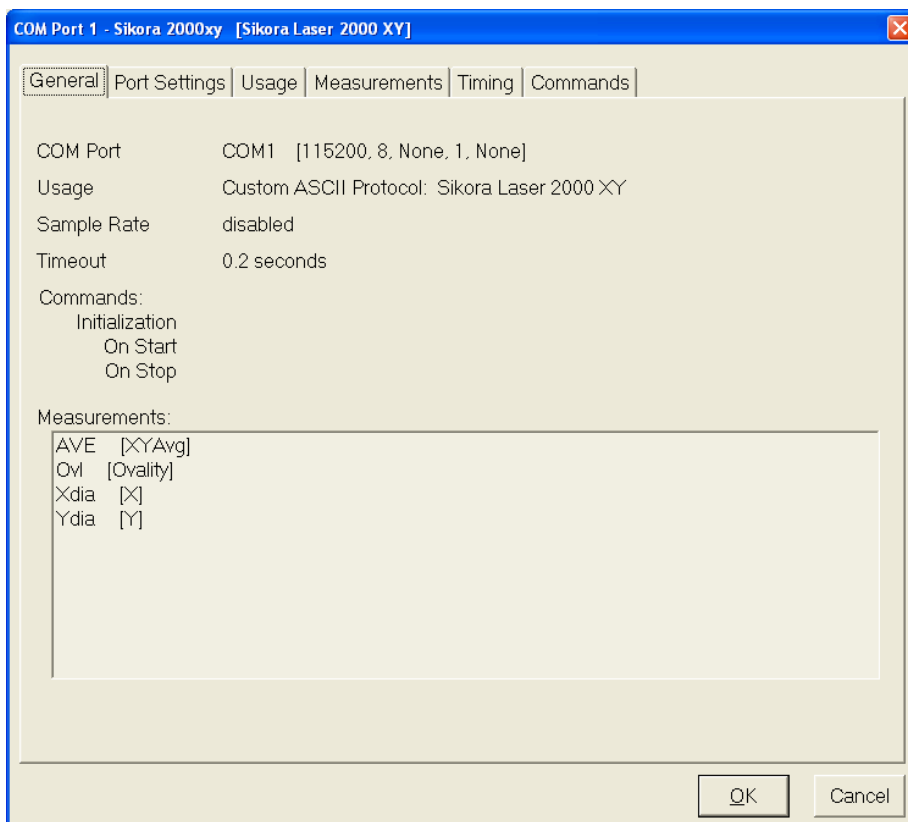
Aug 18<sup>th</sup>, 2011

LaserLinc, Inc  
777 Zapata Drive  
Fairborn, OH 45324  
888-707-4852 Toll Free  
937-318-2440 Voice  
937.318.2445 FAX  
<http://www.laserlinc.com/>

### Hardware Setup:

- Connect to DIAGNOSTIC port on Sikora gauge head
- Standard RS232 cable – DB9 male (Sikora) to DB9 Female (PC)
- AC power cable for Sikora (customer supplied)

In Full Configure Select *Serial I/O*, complete wizard as shown below. Your COM port may be different depending on available ports in your PC.



General **Port Settings** Usage Measurements Timing Commands

**COM Port**

Select the Serial Port. Total Vu works with any serial port that appears in the Ports category of the operating system's Device Manager.

COM1

**Settings**

Select settings to match the device connected to the port. Refer to the documentation for the device or contact the manufacturer if you are unsure of the device's settings.

**Use Device Manager Settings**

**Baud Rate** 115200  
**Data Bits** 8  
**Parity** None  
**Stop Bits** 1  
**Flow Control** None

Load Settings for  
COM1 from  
Device Manager

OK Cancel



General | Port Settings | Usage | Measurements | Timing | Commands

**Usage**

Select how the port will be utilized. With Modbus, multiple devices may be connected and there can be any mix of device types including multiple of the same type. With Modbus and ASCII, the input measurements are defined on the next tab.

- Disabled
- Output
- Modbus RTU
- Custom ASCII Protocol

**Device Name**

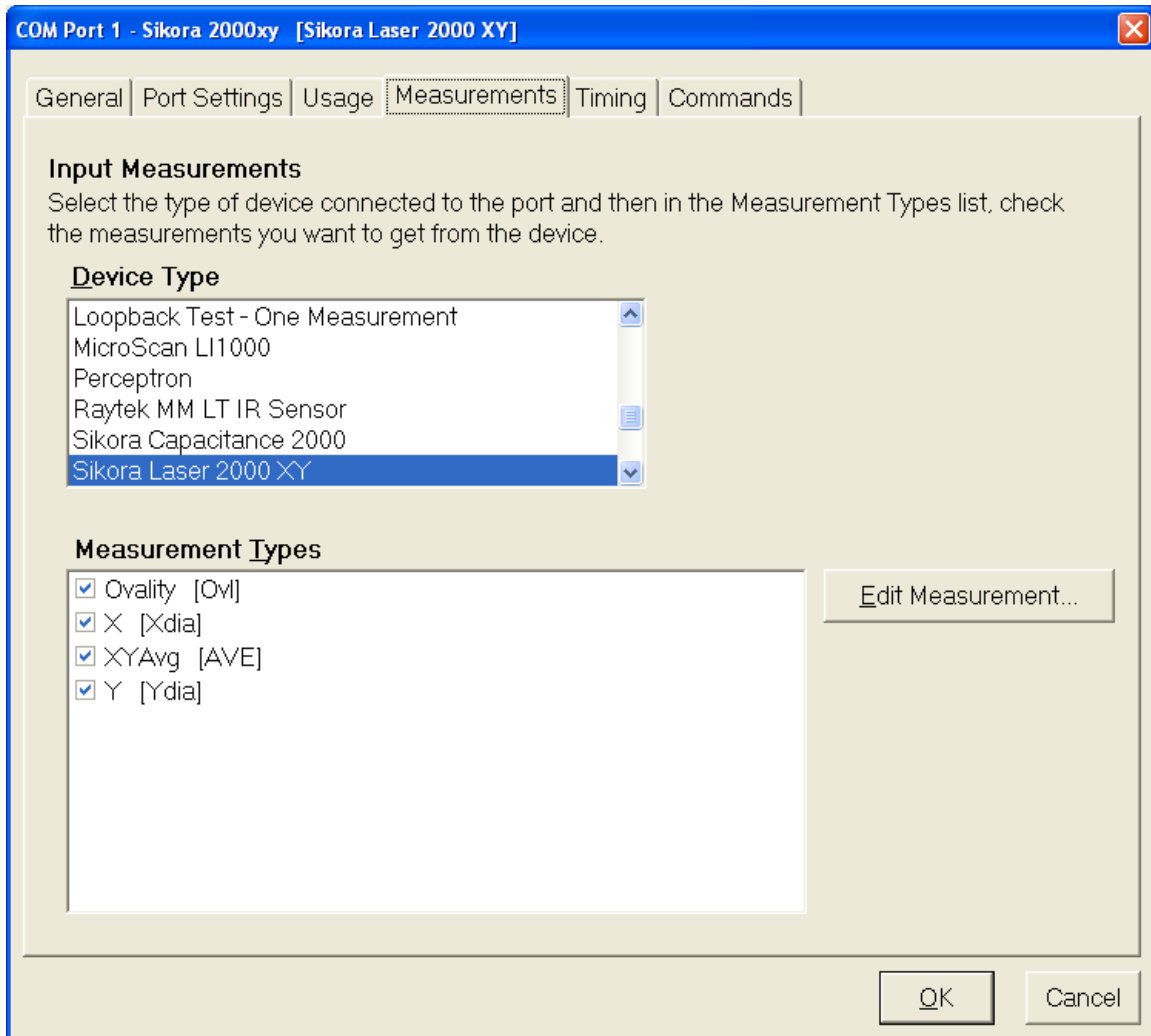
Enter the name for the new device. It must begin with a letter or a digit. [ ] or | are illegal. The name may be up to 30 characters in length and it must be unique. It cannot match any of the names listed below.

Existing Device Names

OK

Cancel

1. Select Sikora Laser 2000 XY
2. Select all available measurements
3. Select Edit Measurements & complete Wizard for each measurement



General **Properties** Status SPC**Number to Average**

Enter the number of measurement values received from the device to collect and average before reporting a new measurement value.

**Running Average**

If checked, the value reported will be the average of a user-specified number of the most recent measurements.

 Use Running Average**Resolution**

Select the number of places to display in the measurement value to the right of the decimal point.

**Decimal Point Placement**

Select the position of the decimal point in the ASCII data received from the device. Examples [received text = "12345"]: 1 will result in 0.12345; 3 will result in 12.345; 0 will revert to the default in the Device file.

**Offset**

When the Use Offset box is checked the value below is added to the computed value of the function before it is reported. A negative Offset results in a smaller final measurement value.

 Use Offset

OK

Cancel

General | Properties | **Status** | SPC

**OLD Status Error**

The OLD status condition is used to report when the attribute value is stale or too old. If enabled, the condition becomes true when the attribute value remains unchanged for at least the specified amount of time.

Enable OLD Status Error

Seconds ▼

OK

Cancel

General | Properties | Status | **SPC**

**SPC Plans**

Select each SPC Sampling Plan that will maintain statistics for this measurement.

- Standard SPC

OK

Cancel



**Measurement Name**

Enter the name for the new measurement. It must begin with a letter or a digit. [ ] or | are illegal. The name may be up to 30 characters in length and it must be unique. It cannot match any of the names listed below.

Xdia

Existing Measurements (shown for convenience)

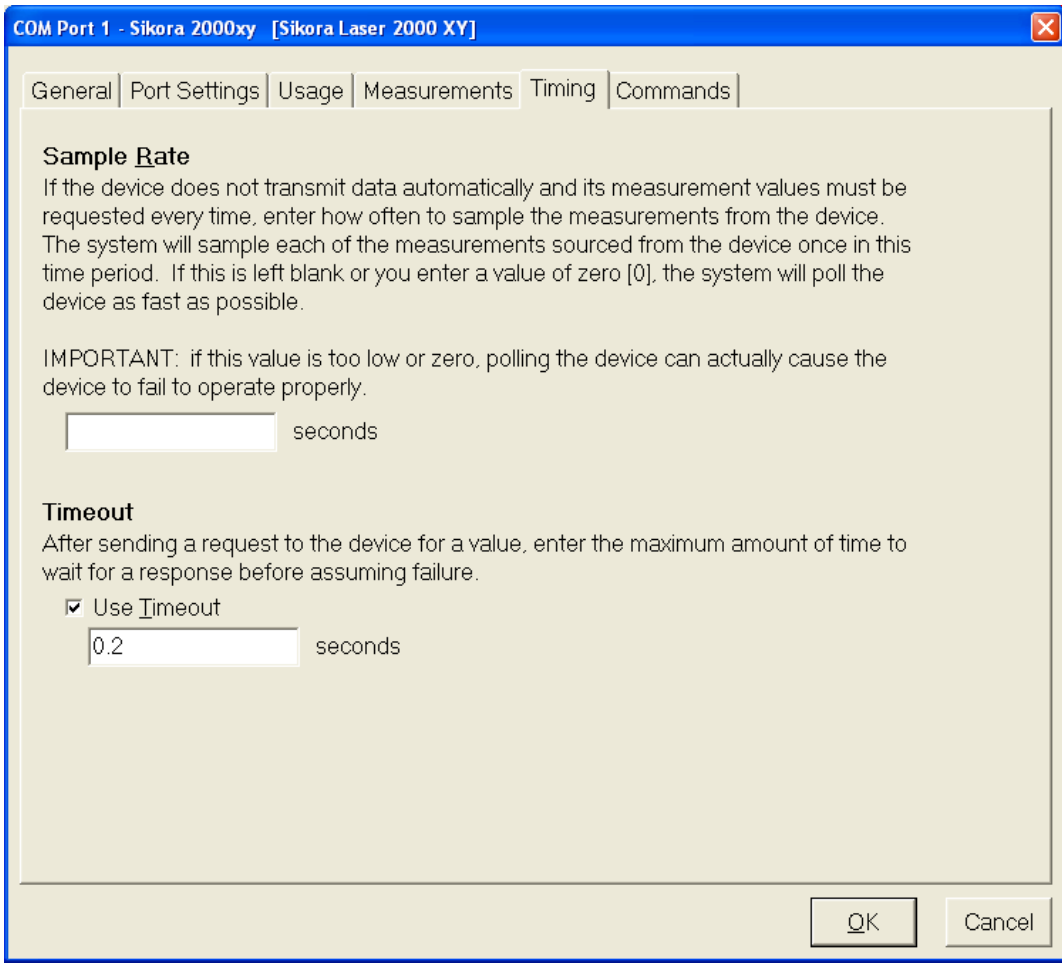
- AVE
- Ovl
- Ydia

<< Back

Finish

Cancel





## 1. Nothing required for Sikora 2000 XY

The screenshot shows a software configuration window titled "COM Port 1 - Sikora 2000xy [Sikora Laser 2000 XY]". The window has a blue title bar and a standard Windows-style border. At the top, there is a tabbed interface with the following tabs: "General", "Port Settings", "Usage", "Measurements", "Timing", and "Commands". The "Commands" tab is currently selected and active.

Under the "Commands" tab, the "Echo Handling" section is visible. It contains the text: "If the device echoes commands it receives back to the sender, check this box." Below this text is a checkbox labeled "Handle Device Echo", which is currently unchecked.

Below the checkbox is a button labeled "Load Default Commands from Device Definition File". To the right of this button is a teal-colored button with white text that reads "HELP: Using special characters".

The "Initialization Command" section is labeled "[Optional]" and contains the text: "If the device should be initialized when Total Vu is initializing, enter the text to transmit here." Below this text is an empty text input field.

The "On Start Command" section is also labeled "[Optional]" and contains the text: "Enter text or a command, if any, to transmit to the device when Total Vu monitoring begins (i.e. when the Start button is pressed or the Start Scanning action is executed)." Below this text is another empty text input field.

The "On Stop Command" section is labeled "[Optional]" and contains the text: "Enter text or a command, if any, to transmit to the device when Total Vu monitoring stops (i.e. when the Stop button is pressed or the Stop Scanning action is executed)." Below this text is a third empty text input field.

At the bottom right of the window, there are two buttons: "OK" and "Cancel".

In *Full Configure* Select *Measurements*, ensure new measurements are present. Close-out of *Full Config*. From the main display, select *Window/New Window* and create a display with the new measurements.