

Quick Start Guide

Sheet 11a

Installing a Signal Tower on a LaserLinc System

Installing a 3-color Signal Tower with or without an alarm on a LaserLinc System is accomplished easily by following these steps.

- Step 1:** Complete Quick Start Guide Sheets with lower sheet numbers that apply to your system. Define gauge Measurements & Spec Limits. Refer to the Total Vu Operator's Manual if needed.
- Step 2:** LaserLinc supplied Signal Towers are 120 VAC devices. Prepare the Signal Tower's GRAY(Neutral),BLACK (Line) & GRN/YEL (Grd) wires for connection to facility power. DO NOT PLUG IN AT THIS TIME. Refer to Figure 1 & 6 below.
- Step 3:** On the USB-DIO I/O (PDIS08), connect COMMON terminals "C" on outputs 0-4 to the Signal Tower YELLOW wire using 18-22AWG hookup wire (Figure 2). NOTE: if you desire flashing lights instead of continuous lights, connect common outputs 0-4 "C" to Signal Tower Wire BROWN instead of YELLOW. Tape-off unused YELLOW or BROWN wire.



Figure 1. Signal Tower AC Power Connection

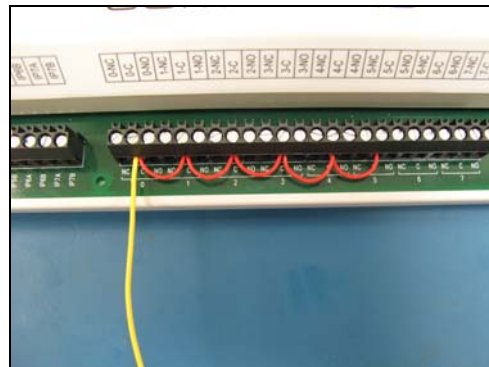


Figure 2. PDIS08 COMMON connections

- Step 4:** Make the following connections for a LME 312-RYG:

Signal Tower's	RED	wire to PDIS08 terminal 0-NO(normally open).
Signal Tower's	ORANGE	wire to PDIS08 terminal 1-NO.
Signal Tower's	GREEN	wire to PDIS08 terminal 2-NO.

Optional Audible Alarm - LME 312FB-RYG only:

Signal Tower's GRAY wire to PDIS08 terminal 3-NO (audible alarm 1)
Signal Tower's BLACK wire to PDIS08 terminal 4-NO (audible alarm 2)

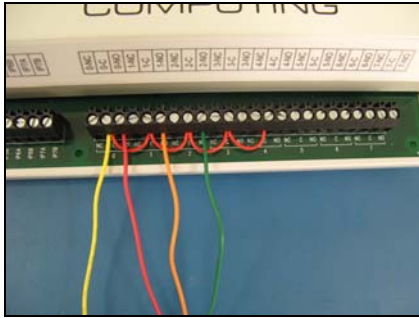


Figure 3. Signal Tower RYG Light Connections

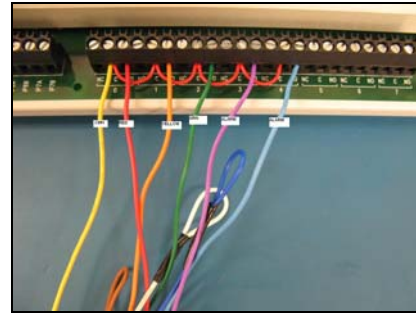


Figure 4. w/ Optional Signal Tower Alarm Connections

Step 5: Insulate and retain all unused wires. Apply 120 VAC to Signal Tower's BLACK & GRAY wires.

Step 6: Start Total Vu. In *Configure>Full Configuration>Alarms* ICON. Select *Add Alarm* to launch the alarm wizard. Configure outputs 0,1 & 2 for RED, YELLOW & GREEN lights respectively (optional audible alarms on 4 & 5). Follow wizard screens; Figures 5 - 9 below.

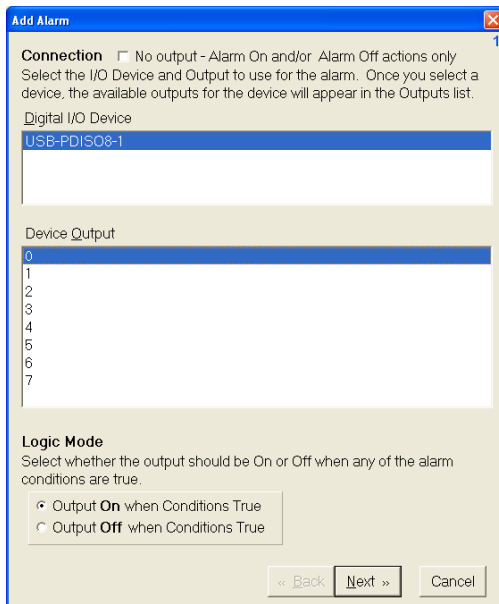


Figure 5. Select Device Output 0

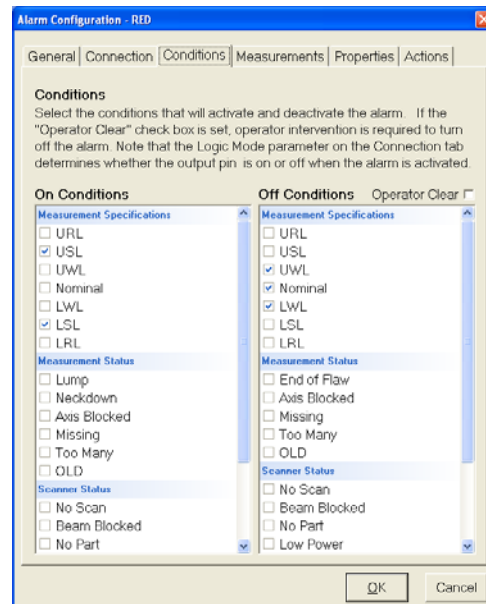


Figure 6. Select RED's ON/OFF Conditions

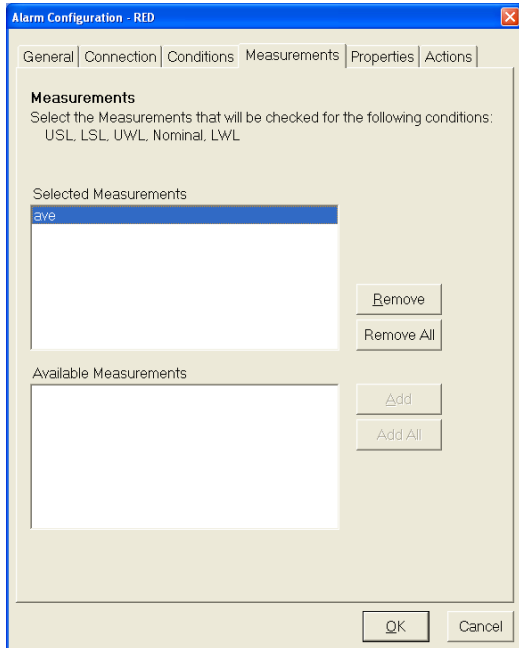


Figure 7. Select Desired Measurement(s) <Next>



Figure 8. Accept Defaults <Next>

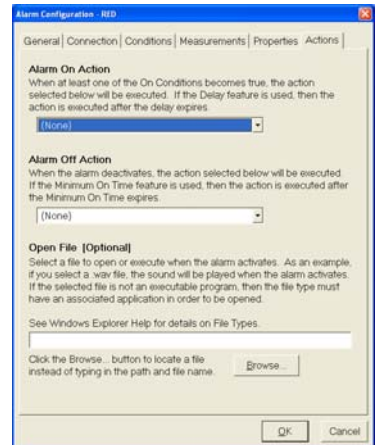


Figure 9. Enter "RED" then <Finish>

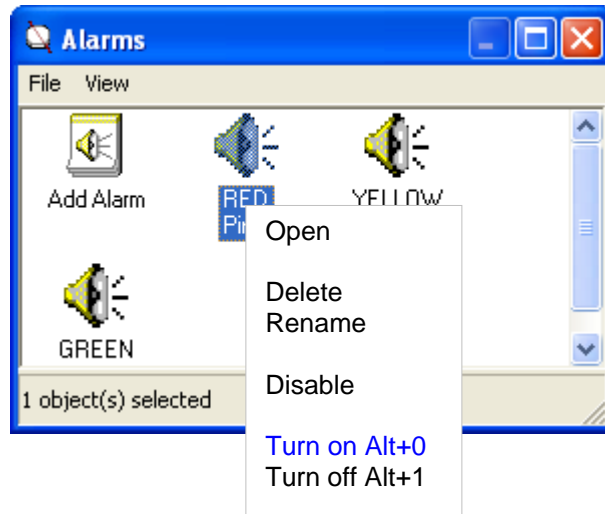
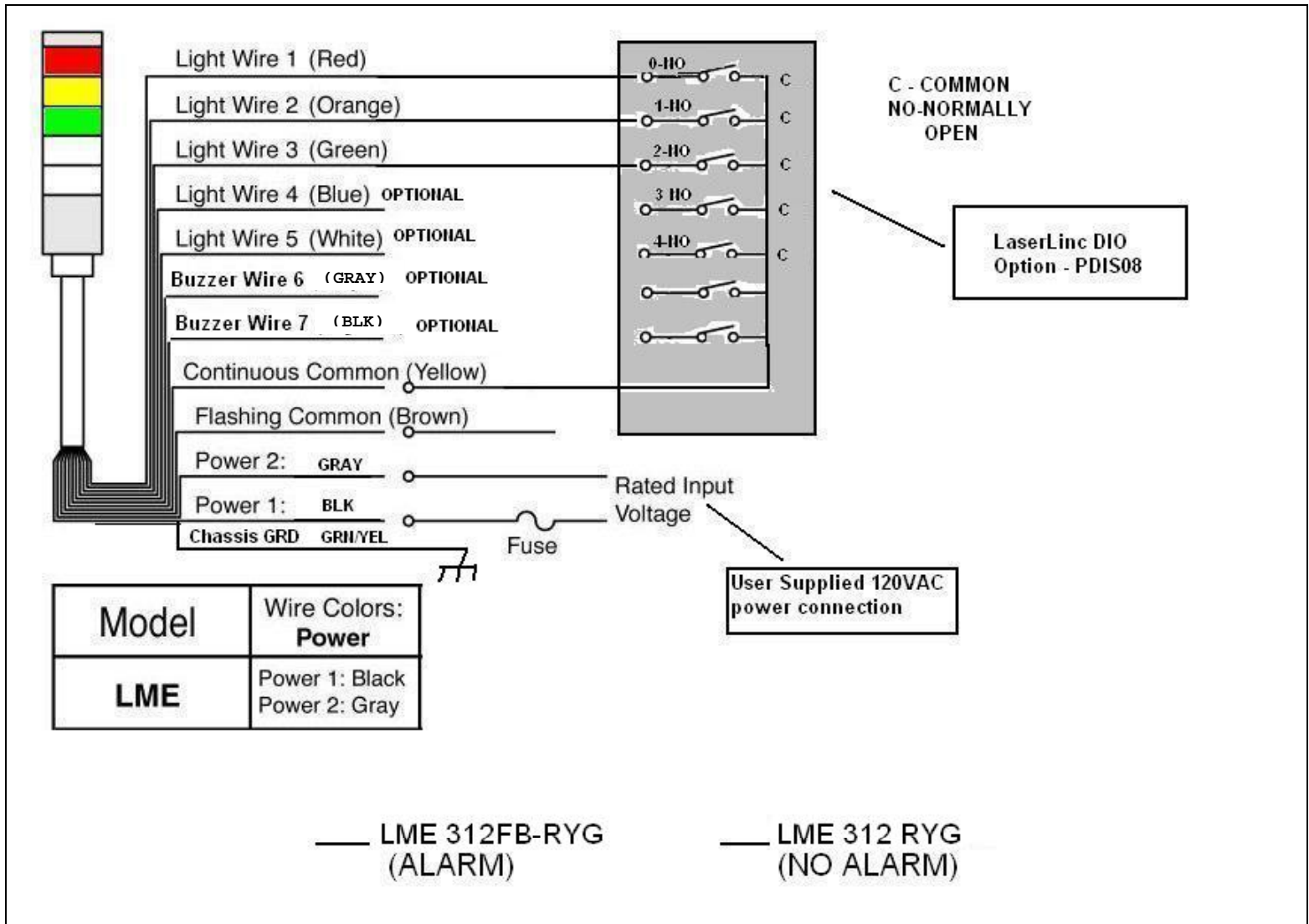


Figure 10.

Step 7. Repeat Step 6 for Yellow & Green lights (and optional audible alarms if applicable) selecting appropriate ON/OFF conditions. Signal Tower should be functional. Manual testing can be accomplished by highlighting individual alarms, right clicking, and selecting *Turn on / Turn off*, see Figure 10.

Figure 6. Signal Tower Wiring Diagram



LaserLinc, Inc.
777 Zapata Dr.
Fairborn, OH 45324
Phone: 937-318-2440
Toll-Free: 888-707-4852
Fax: 937-318-2445