

Quick Start Guide

Sheet 11d

Installing a Signal Tower on a LaserLinc System w/RJ45 Modular Cabling System

Installing a 3-color Signal Tower with or without an alarm on a LaserLinc System is accomplished easily by following these steps.

- Step 1:** Complete Quick Start Guide Sheets with lower sheet numbers that apply to your system. Define gauge Measurements & Spec Limits. Refer to the Total Vu Operator's Manual if needed.
- Step 2:** LaserLinc supplied Signal Towers are 120 VAC devices. The Signal Tower is pre-wired for connection to facility power. DO NOT PLUG IN AT THIS TIME.
- Step 3:** On the Net I/O, connect COMMON terminals "CMN" on outputs 1C,1D,2C,2D to the Signal Tower BROWN wire using 18-20 22AWG hookup wire (Figure 2).

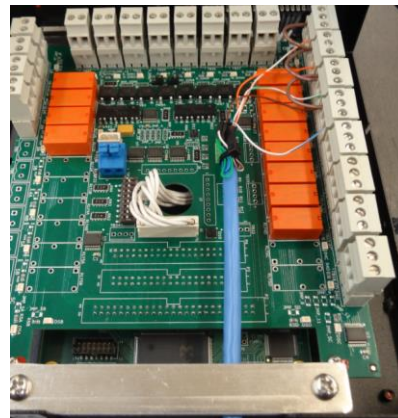


Figure 2. Net I/O COMMON connections

- Step 4:** Make the following connections for a LR6-RYG:

Signal Tower (COMMON) BROWN wire to Net I/O terminal 2D-CMN.
Signal Tower (RED) WHT/ORG wire to Net I/O terminal 1C-NO (normally open).
Signal Tower (YELLOW) ORANGE wire to Net I/O terminal 1D-NO.
Signal Tower (GREEN) WHT/GREEN wire to Net I/O terminal 2C-NO.

Optional Audible Alarm - LR6-RYG only:

Signal Tower (ALARM SOLID) WHT/BLU wire to Net I/O terminal 2D-NO

- Step 4a:** Connect Signal Tower's plug to A/C power

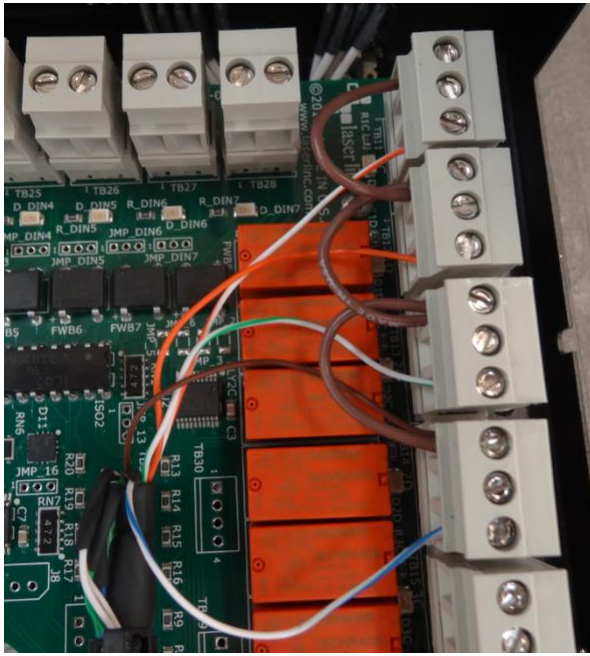


Figure 3. Signal Tower RYG Light & Alarm Connections

Step 5: Start Total Vu. In *Configure>Full Configuration>Alarms* ICON. Select *Add Alarm* to launch the alarm wizard. Configure outputs 1C, 1D & 2C for RED, YELLOW & GREEN lights respectively (optional audible alarms on 2D). Follow wizard screens; Figures 5 - 9 below.

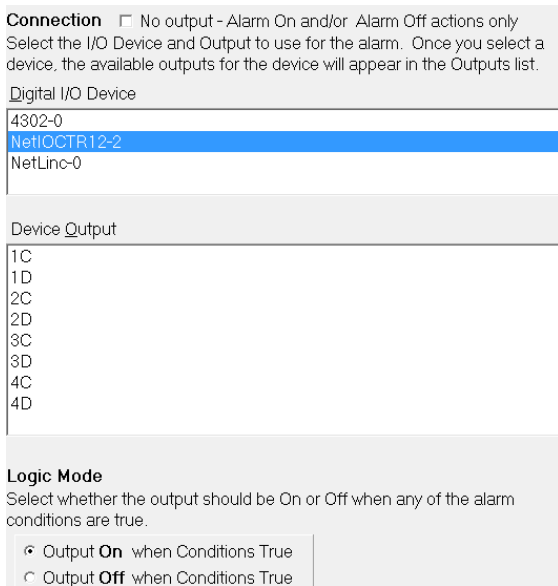


Figure 5. Select Device Output 1C

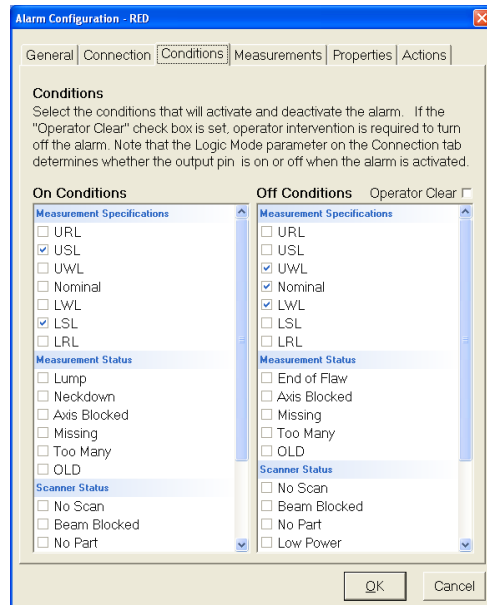


Figure 6. Select RED's ON/OFF Conditions

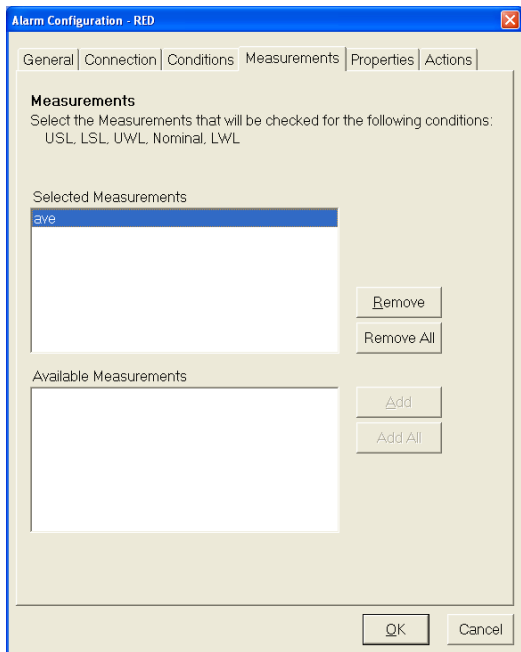


Figure 7. Select Desired Measurement(s) <Next>



Figure 8. Accept Defaults <Next>

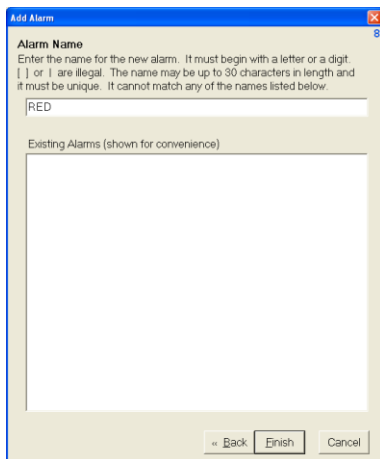
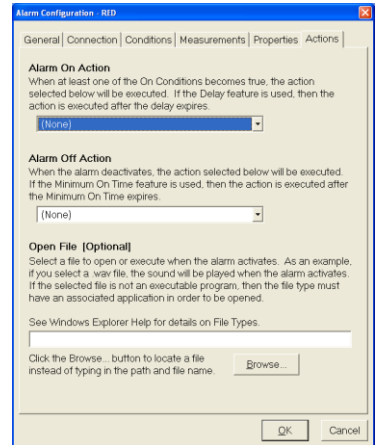


Figure 9. Enter "RED" then <Finish>

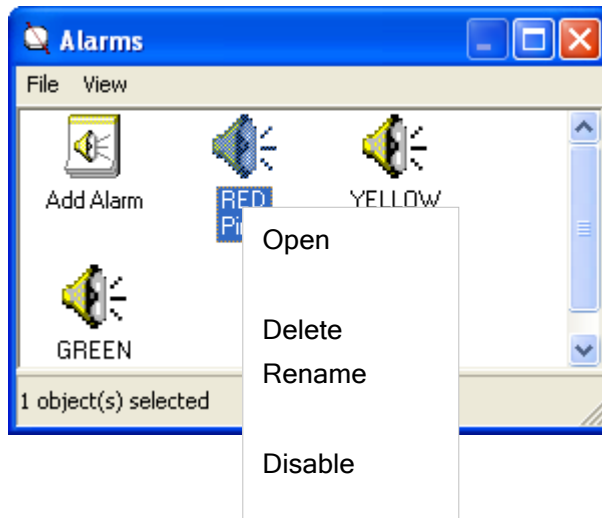


Figure 10.

Step 7. Repeat Step 6 for Yellow & Green lights (and Optional audible alarms if applicable) selecting appropriate ON/OFF conditions. Signal Tower should be functional. Manual testing can be accomplished by highlighting individual alarms, right clicking, and selecting *Turn on / Turn off*, see Figure 10.

RJ45_G3 PIN OUT

<u>ALARM TOWER</u>	<u>FLYING LEAD</u>
RED LIGHT	WHITE/ORANGE
YELLOW LIGHT	ORANGE
GREEN LIGHT	WHITE/GREEN
ALARM 1 CONTINUOUS / SOLID	WHITE/BLUE
COMMON SOLID	BROWN



LaserLinc, Inc.
777 Zapata Dr.
Fairborn, OH 45324
Phone: 937-318-2440
Toll-Free: 888-707-4852
Fax: 937-318-2445