

# Quick Start Guide

## Sheet 6

### Installing USB-Digital I/O on a LaserLinc System

---

Installing A USB-Connected Digital I/O box on a LaserLinc System is accomplished easily by following these steps.

Step 1: Complete all Quick Start Guide Sheets with lower sheet numbers that apply to your system.

Step 2: Connect the power supply for the USB device into the device and then into a wall outlet. Plug the USB cable supplied into the box (See Figure 1.). With the computer system turned on, plug in the USB cable for the device into any available USB port on the computer. Windows Hardware Manager should detect new hardware and start the installation process. When asked for the path to the driver for the device, point to the root directory of the Measurement Computing CDROM that came with the device. Note, if this device or another Measurement computing device was previously installed on this computer, it may be recognized without going through the New Hardware Wizard.



Figure 1. USB D I/O Box Connections



Figure 2. Connect the USB D I/O Box

Step 3: Once the hardware installation is complete, run InstaCal (Start>All Programs>Measurement Computing>InstaCal). Accept the new device when InstaCal prompts (Figure 3). When the new device appears in the PC board list (See Figure 4), close the InstaCal window.



Figure 3. Plug and Play Detect Screen in InstaCal

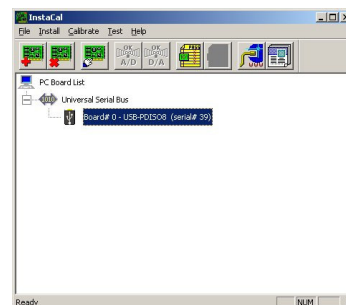


Figure 4. InstaCal Screen showing the installed USB Device

Step 4: If this installation is part of an upgrade, a disk will be included with at least one file on it. Place the disk into the computer and copy the file it contains (TotalVu.bin) to the Total Vu directory (usually C:\Program Files\LaserLinc\Total Vu directory).

Step 5: Run the Total Vu software. There will now be icons in the Configure>Full Configuration screen for Digital Inputs, Alarms, and for the Device that was installed. If the icon for the device is not in this screen, try reinstalling the device from step 2 above. If, after 2 attempts to reinstall, the device still is not installed, call LaserLinc Technical Support at the numbers supplied below.

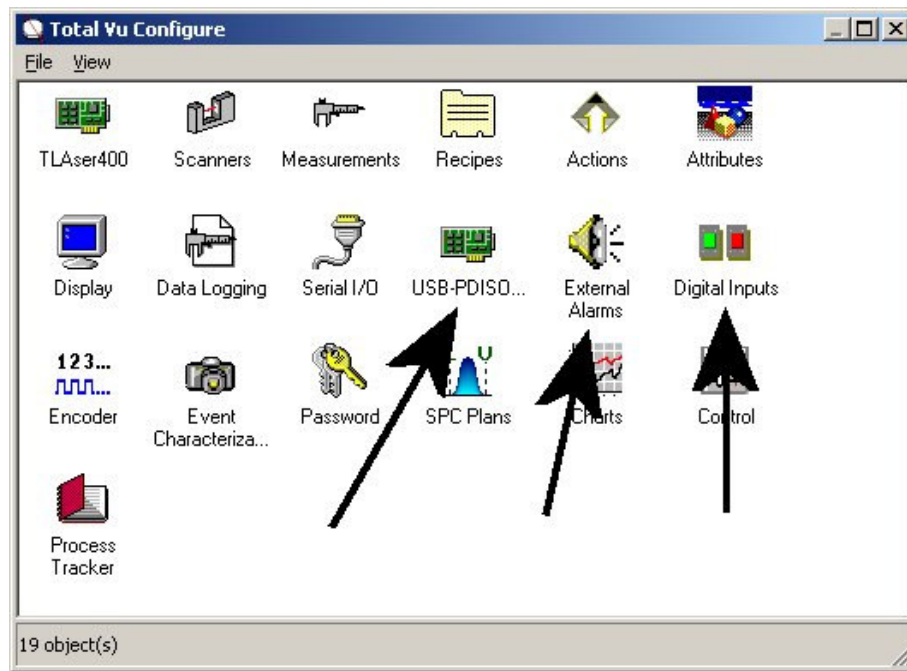


Figure 5. Total Vu Full Configuration Screen