

Quick Start Guide

Installing an OLC (LE FBP) Signal Tower on a LaserLinc System

Installing a 3-color Signal Tower with alarm, on a LaserLinc System is accomplished easily by following these steps.

Step 1: Gain access to the discrete wiring under the signal tower base unit.

Color code:

gray - unused - tape-off
black - Ground to PDIS08 ground connection
orange - yellow light
green - green light
Red - red light
blue - audible alarm

Step 2: OLC supplied Signal Towers are 9-12 VDC devices. The supplied pig-tail power adapter will provide this power from the USB-DIO I/O rear panel auxiliary connection.

On the USB-DIO I/O (PDIS08) terminal strip, connect COMMON terminals "C" on outputs 0-2 to the pig-tail RED wire using 18-22AWG hookup wire - daisy-chain as shown below (Figure 2).

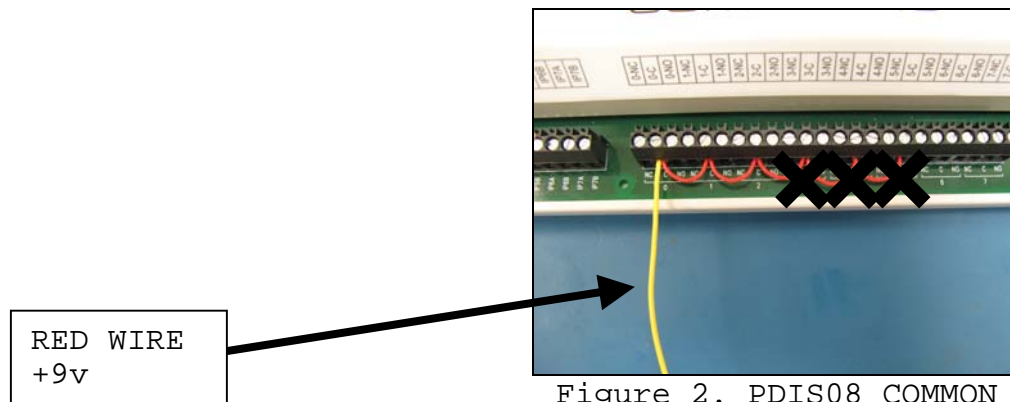


Figure 2. PDIS08 COMMON connections

Step 3: Make the following connections from the LE FRB:

- Signal Tower's BLACK wire to Power Adapter PIG TAIL BLACK (Ground).
- Signal Tower's GREEN wire to PDIS08 terminal 0-NO(normally open).
- Signal Tower's ORANGE wire to PDIS08 terminal 1-NO.
- Signal Tower's RED & BLUE wire to PDIS08 terminal 2-NO.

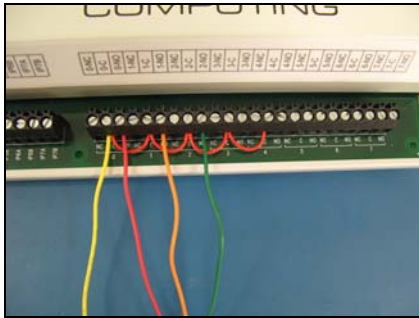


Figure 3. Signal Tower RYG Light Connections

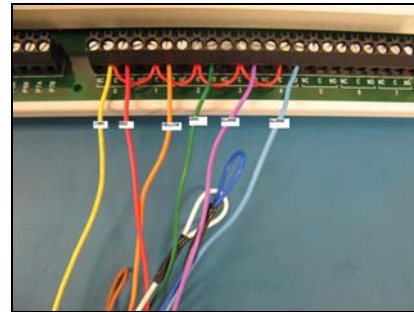


Figure 4. w/ Optional Signal Tower Alarm Connections

Step 4: Connect pig-tail power connector to USB DIO rear panel.

Step 5: Start Total Vu. In *Configure>Full Configuration>Alarms* ICON. Select *Add Alarm* to launch the alarm wizard. Configure outputs 0,1 & 2 for GREEN, YELLOW & RED lights respectively. Follow wizard screens; Figures 5 - 9 below.

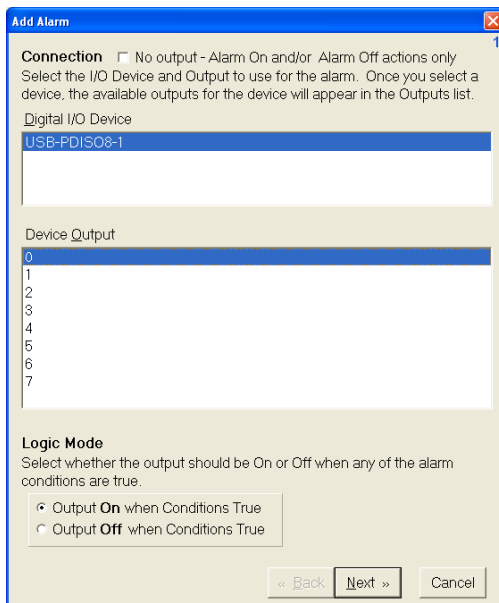


Figure 5. Select Device Output 0

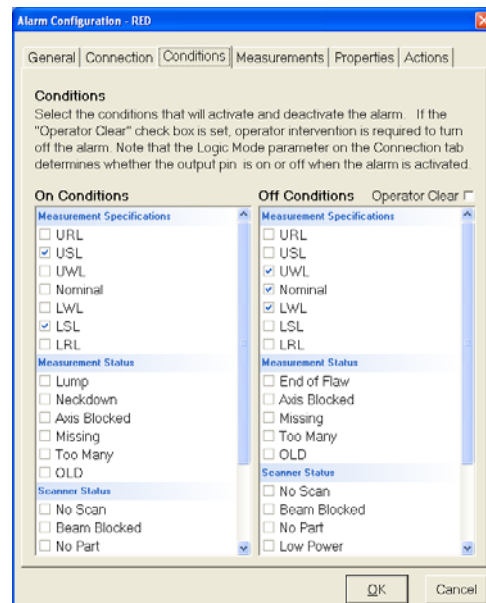


Figure 6. Select GREEN's ON/OFF Conditions

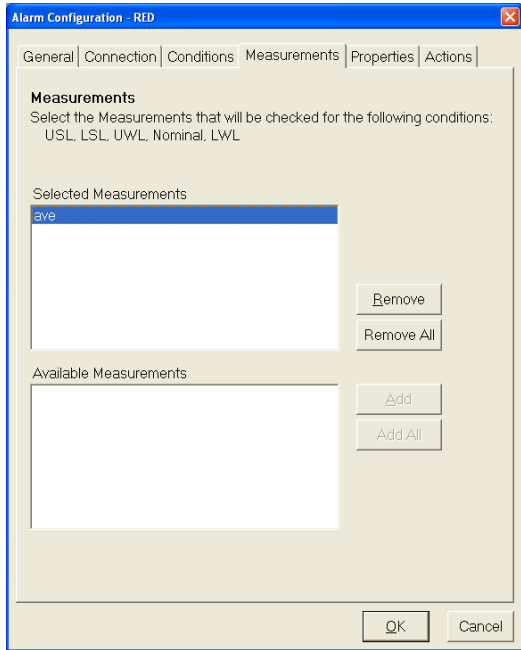


Figure 7. Select Desired Measurement(s) <Next>



Figure 8. Accept Defaults <Next>

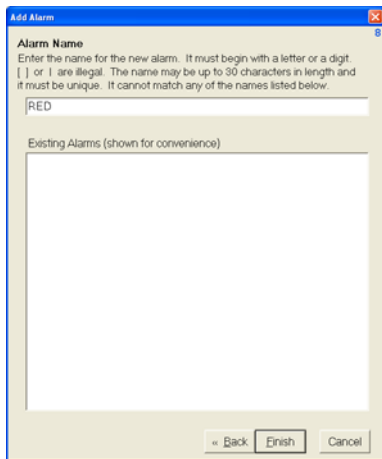
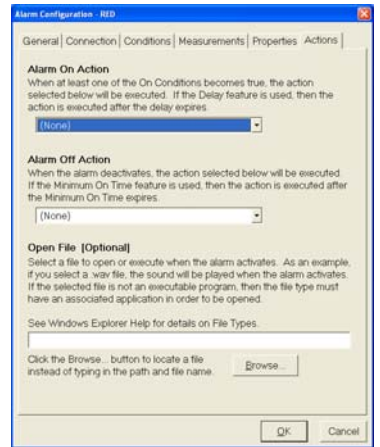


Figure 9. Enter "GREEN" then <Finish>

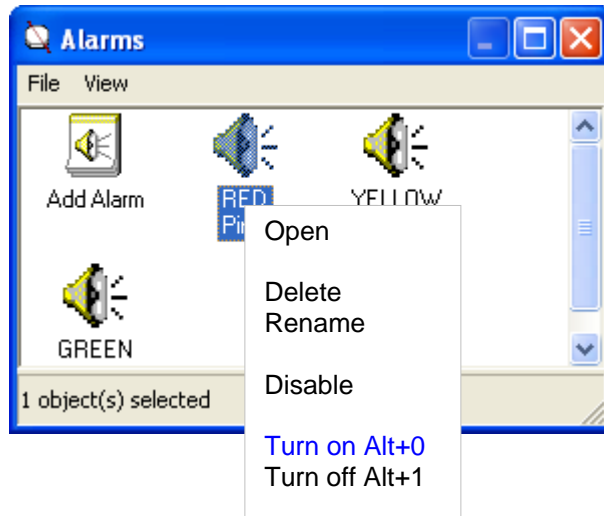


Figure 10.

Repeat Step 6 for Yellow & RED lights (and optional audible alarms if applicable) selecting appropriate ON/OFF conditions. Signal Tower should be functional. Manual testing can be accomplished by highlighting individual alarms, right clicking, and selecting *Turn on / Turn off*, see Figure 10.



LaserLinc, Inc.
777 Zapata Dr.
Fairborn, OH 45324
Phone: 937-318-2440
Toll-Free: 888-707-4852
Fax: 937-318-2445