

8

7

6

5

4

3

2

1

| REVISIONS |      |             |          |          |
|-----------|------|-------------|----------|----------|
| ZONE      | REV. | DESCRIPTION | DATE     | APPROVED |
|           | A    | Check-In    | 7/1/2014 | MAM      |

F

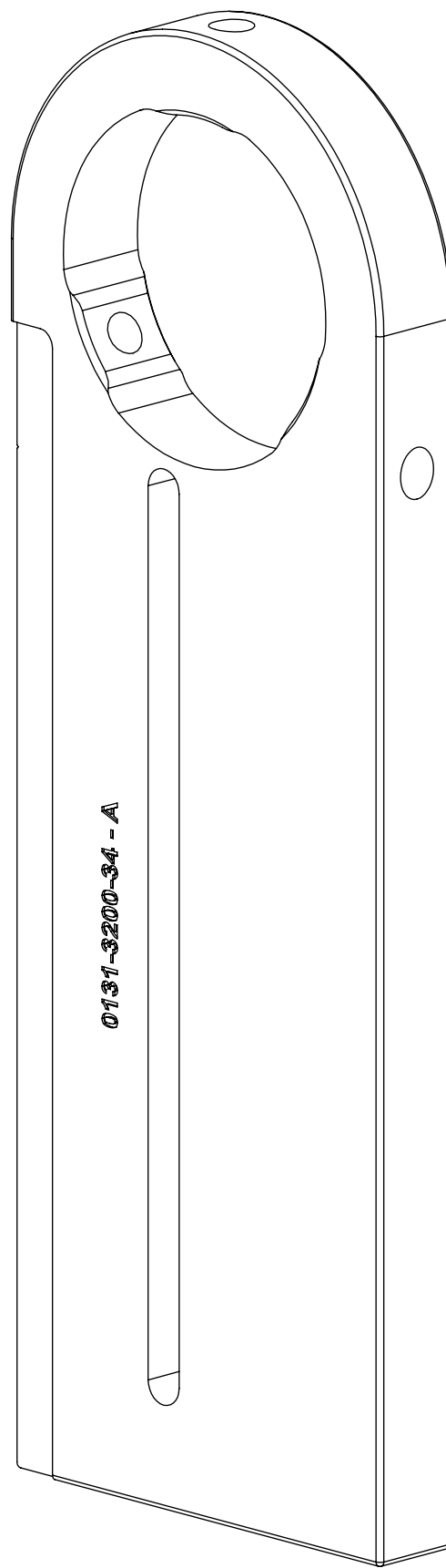
E

D

C

B


A



# CALIBRATION PLATE FOR TLASER 130 MICROMETER OVERALLS

## INDEX

- (1) COVER PAGE
- (2) DIMENSIONS

|   |  |  |              |   |      |  |
|---|--|--|--------------|---|------|--|
| <b>GENERAL FINISH NOTE</b>  |  | UNLESS OTHERWISE SPECIFIED:  |              | NAME  | DATE |  <b>LASERLINC, INC.</b><br>PHONE: 888-707-4892<br>INFO@LASERLINC.COM<br>WWW.LASERLINC.COM |
| <b>DE-BURR AND BREAK</b><br><b>ALL SHARP EDGES</b><br><b>BEFORE FINISH AND/OR</b><br><b>SHIPPING</b>  |  | DIMENSIONS ARE IN INCHES<br>TOLERANCES:<br>ANGLES ±.25°<br>TWO PLACE DECIMAL ±0.010<br>THREE PLACE DECIMAL ±0.005<br>FOUR PLACE DECIMAL ±0.0005<br>UNMARKED FILLETS/CHAMFER .06<br>DE-BURR ALL PARTS |              | DRAWN BY:   | EMM  |  |
| PROPRIETARY AND CONFIDENTIAL<br><br>THE INFORMATION CONTAINED IN THIS DRAWING IS THE SOLE PROPERTY OF LASERLINC, INC. ANY REPRODUCTION IN PART OR AS A WHOLE WITHOUT THE WRITTEN PERMISSION OF LASERLINC, INC. IS PROHIBITED. |  | INTERPRET GEOMETRIC TOLERANCING PER: ASME Y14.5<br><br>MATERIAL<br>BLACK DELRIN<br><br>FINISH<br><br>DO NOT SCALE DRAWING  |              | 63 RA SURFACE FINISH<br>ALL FEATURES MUST MEET SPECIFICATION AFTER PLATING BEFORE POWDER-COAT IF PLATED OR POWDER-COATED SEE FINISH |      | <b>TITLE:</b><br>0131-3200-34 CALIBRATION PLATE FOR TLASER 130 MICROMETER OVERALLS   |
|   |  | SIZE   | DWG. NO.     | REV   |      |  |
|   |  | <b>B</b>   | 0131-3200-34 | <b>A</b>  |      |  |
|   |  | SCALE: 1:1   |              | SHEET 1 OF 2  |      |  |

8

7

6

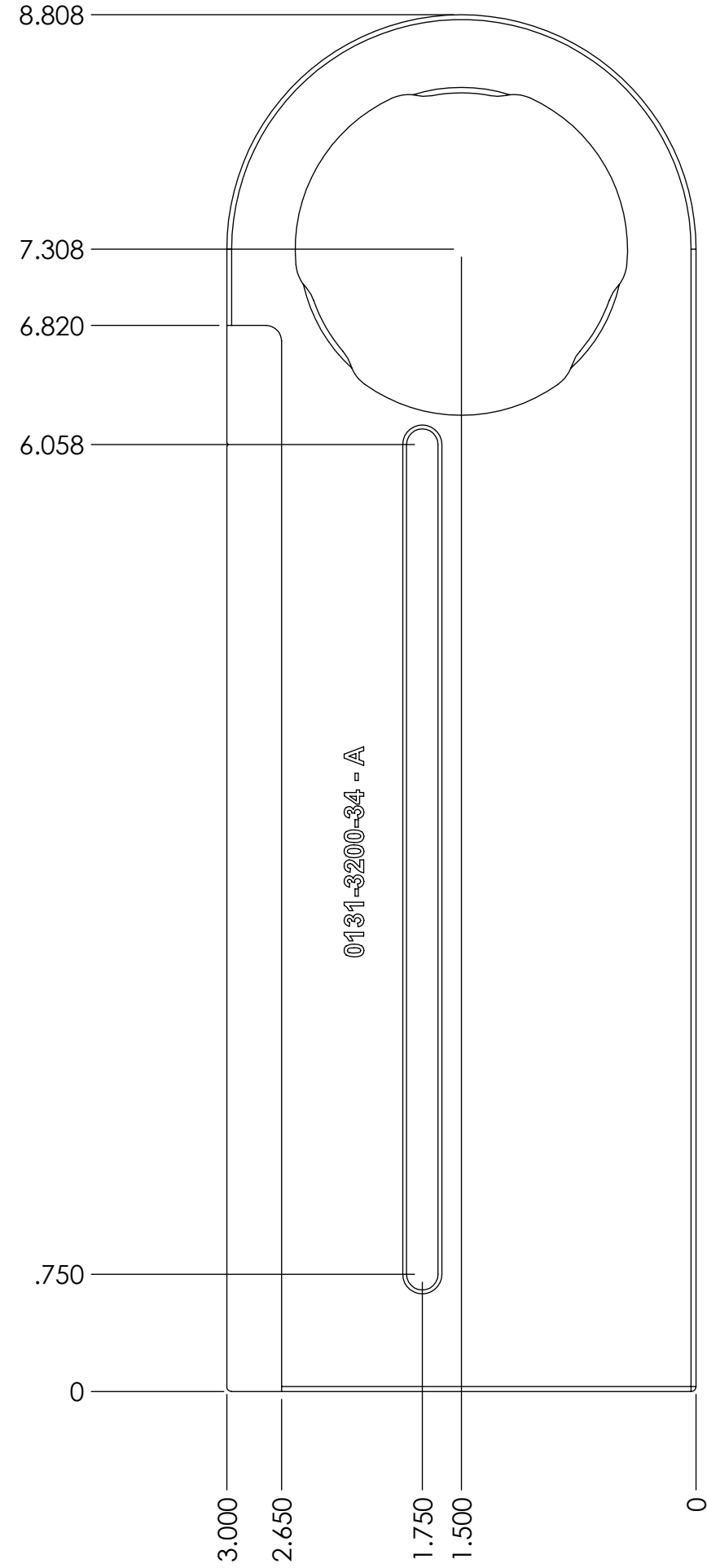
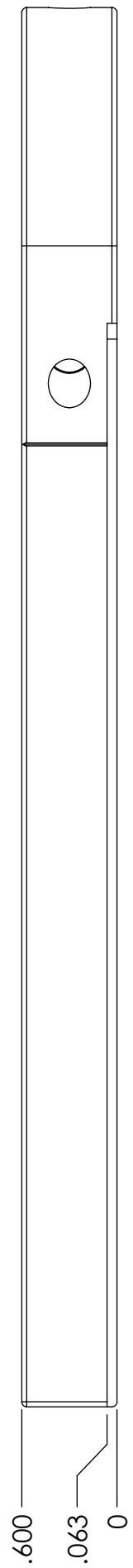
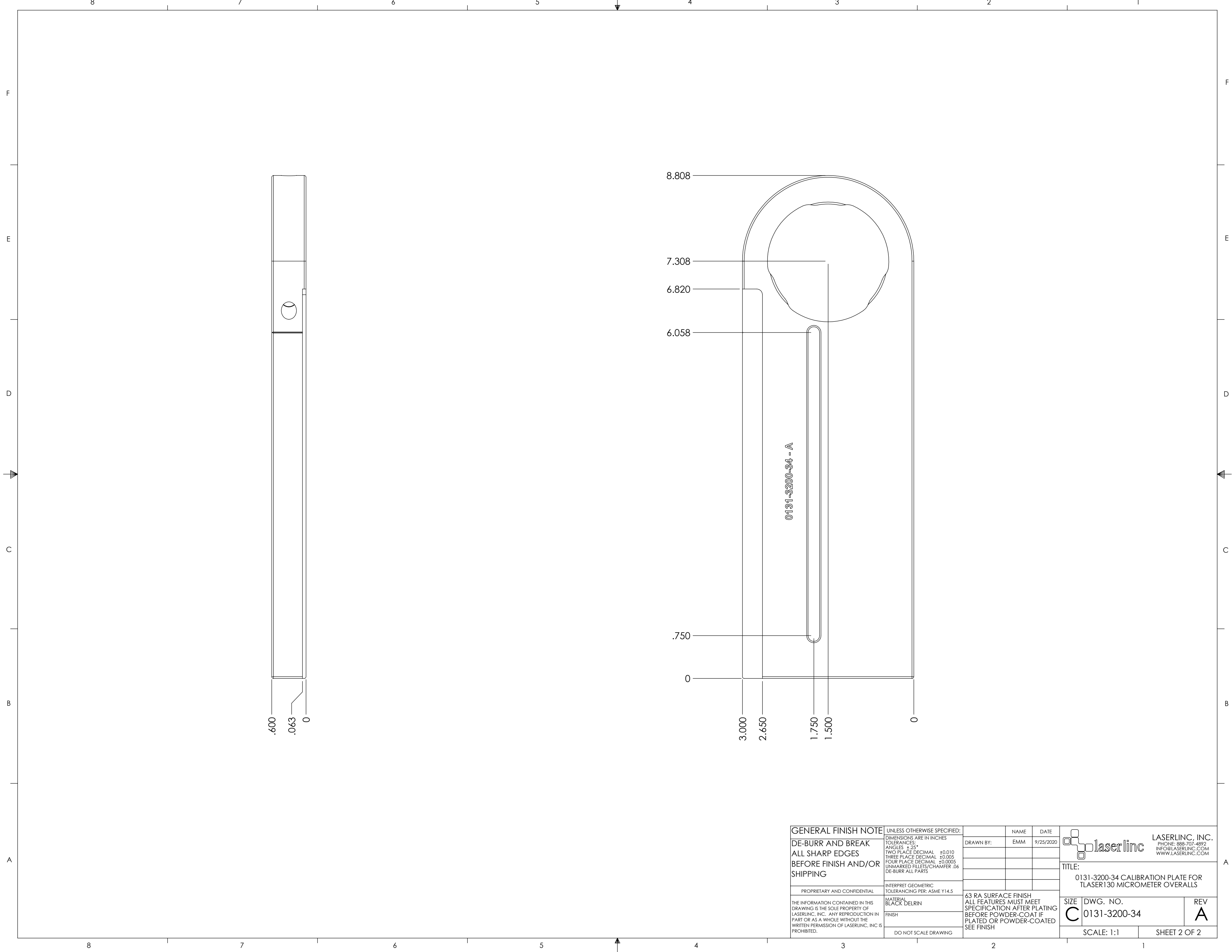
5

4

3

2

1



0131-3200-34 - A

|   |  |  |  |   |               |
|---|--|--|--|---|---------------|
| <b>GENERAL FINISH NOTE</b>  |  | UNLESS OTHERWISE SPECIFIED:  |  | NAME  | DATE          |
| DE-BURR AND BREAK<br>ALL SHARP EDGES<br>BEFORE FINISH AND/OR<br>SHIPPING  |  | DIMENSIONS ARE IN INCHES<br>TOLERANCES:<br>ANGLES ±.25°<br>TWO PLACE DECIMAL ±0.010<br>THREE PLACE DECIMAL ±0.005<br>FOUR PLACE DECIMAL ±0.0005<br>UNMARKED FILLETS/CHAMFER .06<br>DE-BURR ALL PARTS |  | DRAWN BY:   | EMM 9/25/2020 |
| PROPRIETARY AND CONFIDENTIAL  |  | INTERPRET GEOMETRIC<br>TOLERANCING PER: ASME Y14.5   |  |   |               |
| THE INFORMATION CONTAINED IN THIS<br>DRAWING IS THE SOLE PROPERTY OF<br>LASERLINC, INC. ANY REPRODUCTION IN<br>PART OR AS A WHOLE WITHOUT THE<br>WRITTEN PERMISSION OF LASERLINC, INC IS<br>PROHIBITED. |  | MATERIAL<br>BLACK DELRIN<br>FINISH   |  | 63 RA SURFACE FINISH<br>ALL FEATURES MUST MEET<br>SPECIFICATION AFTER PLATING<br>BEFORE POWDER-COAT IF<br>PLATED OR POWDER-COATED<br>SEE FINISH |               |
|   |  | DO NOT SCALE DRAWING   |  |   |               |
| TITLE:<br>0131-3200-34 CALIBRATION PLATE FOR<br>TLASER130 MICROMETER OVERALLS   |  |  |  | SIZE  | REV           |
|   |  |  |  | C   | A             |
| DWG. NO.<br>0131-3200-34  |  |  |  | SCALE: 1:1  |               |
|   |  |  |  | SHEET 2 OF 2  |               |

