

REVISIONS				
ZONE	REV.	DESCRIPTION	DATE	APPROVED
	A	CHECK-IN	6/27/2014	MAM


0103-0000-00
AXION103, SINGLE-AXIS
DATA MICROMETER
OVERALL DIMENSIONS

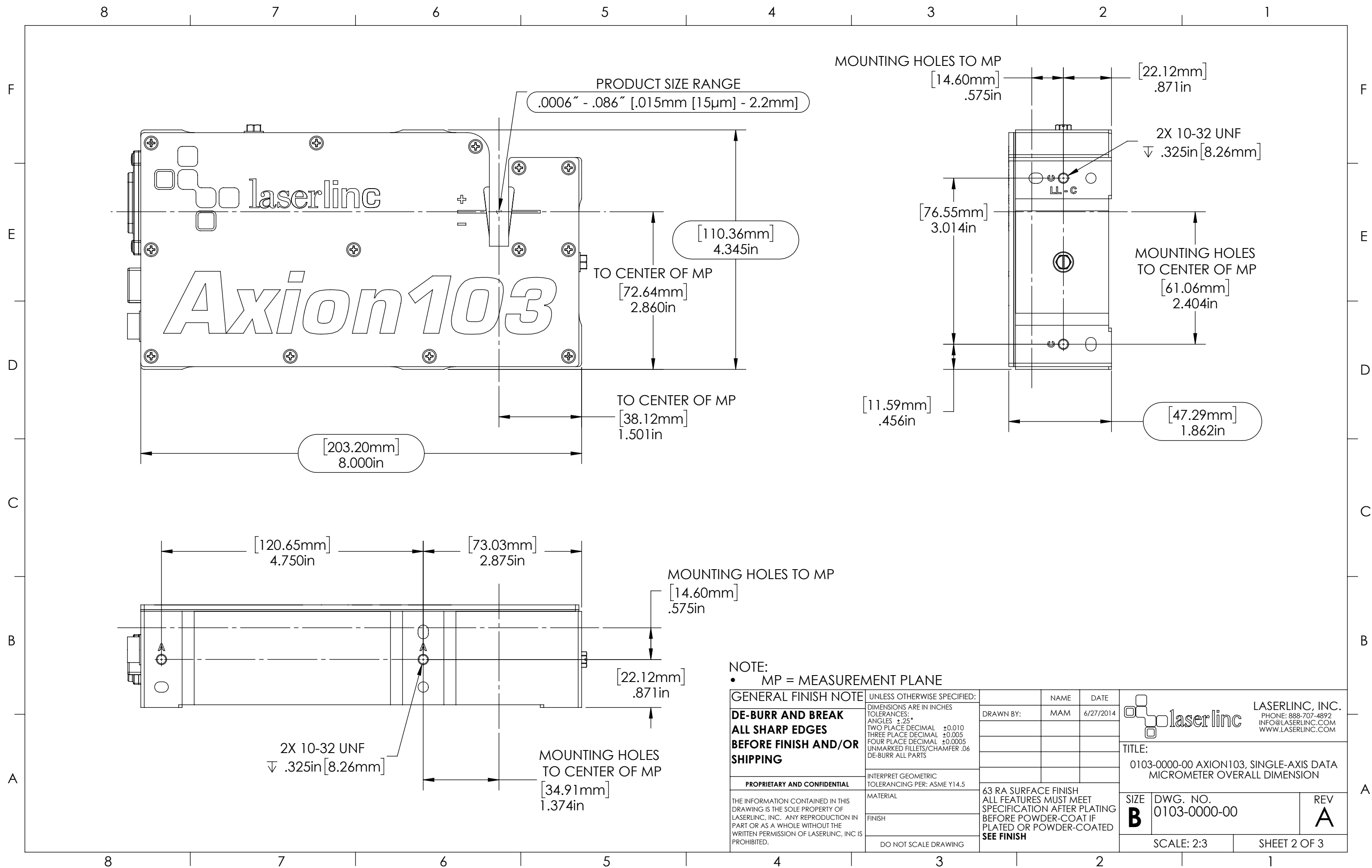
NOTES:

- APPROX. WEIGHT: 4.5 LBS [2.04KG]
- POWER REQUIREMENTS: 100-240 VAC 50/60 Hz 50 W MAX.
- MEASUREMENTS PER SECOND (Hz): 1200, 2400 (OPTIONAL)
- RESOLUTION: .000001" [.025µm]
- REPEATABILITY² UNAVERAGED: ±.00005" [±1.25µm]
- REPEATABILITY² TWO SECOND: ±.000001" [±.025µm]

INDEX

- (1) COVER PAGE
- (2) DIMENSION 1
- (3) DIMENSION 2

GENERAL FINISH NOTE		UNLESS OTHERWISE SPECIFIED:		NAME	DATE	 LASERLINC, INC. PHONE: 888-707-4892 INFO@LASERLINC.COM WWW.LASERLINC.COM
DE-BURR AND BREAK ALL SHARP EDGES BEFORE FINISH AND/OR SHIPPING		DIMENSIONS ARE IN INCHES TOLERANCES: ANGLES ±.25° TWO PLACE DECIMAL ±0.010 THREE PLACE DECIMAL ±0.005 FOUR PLACE DECIMAL ±0.0005 UNMARKED FILLETS/CHAMFER .06 DE-BURR ALL PARTS		DRAWN BY:	MAM	
PROPRIETARY AND CONFIDENTIAL		INTERPRET GEOMETRIC TOLERANCING PER: ASME Y14.5				TITLE: 0103-0000-00 AXION103, SINGLE-AXIS DATA MICROMETER OVERALL DIMENSION
THE INFORMATION CONTAINED IN THIS DRAWING IS THE SOLE PROPERTY OF LASERLINC, INC. ANY REPRODUCTION IN PART OR AS A WHOLE WITHOUT THE WRITTEN PERMISSION OF LASERLINC, INC. IS PROHIBITED.		MATERIAL		63 RA SURFACE FINISH ALL FEATURES MUST MEET SPECIFICATION AFTER PLATING BEFORE POWDER-COAT IF PLATED OR POWDER-COATED SEE FINISH		SIZE B
		FINISH				DWG. NO. 0103-0000-00
		DO NOT SCALE DRAWING				REV A
				SCALE: 1:1		SHEET 1 OF 3



PRODUCT SIZE RANGE
 .0006" - .086" [.015mm [15µm] - 2.2mm]

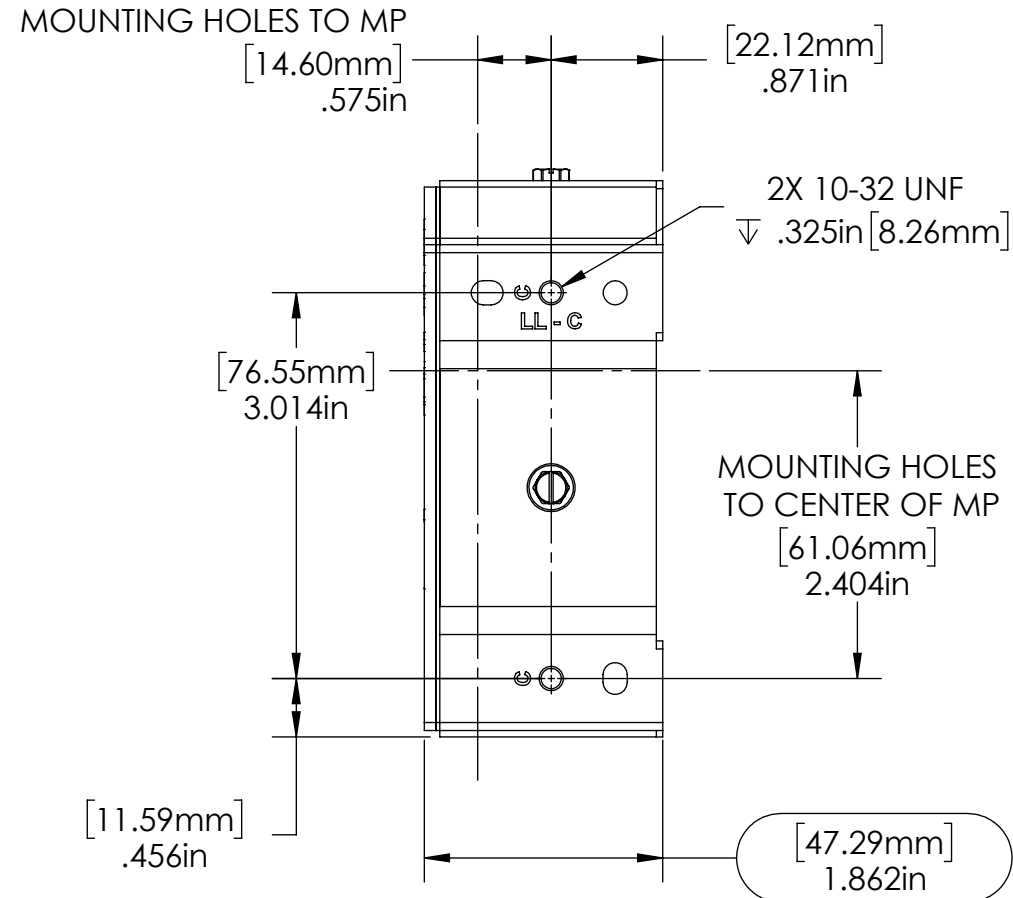
[110.36mm]
 4.345in

TO CENTER OF MP
 [72.64mm]
 2.860in

TO CENTER OF MP
 [38.12mm]
 1.501in

[203.20mm]
 8.000in

laserlinc
Axion 103



[120.65mm] 4.750in
 [73.03mm] 2.875in

MOUNTING HOLES TO MP
 [14.60mm]
 .575in

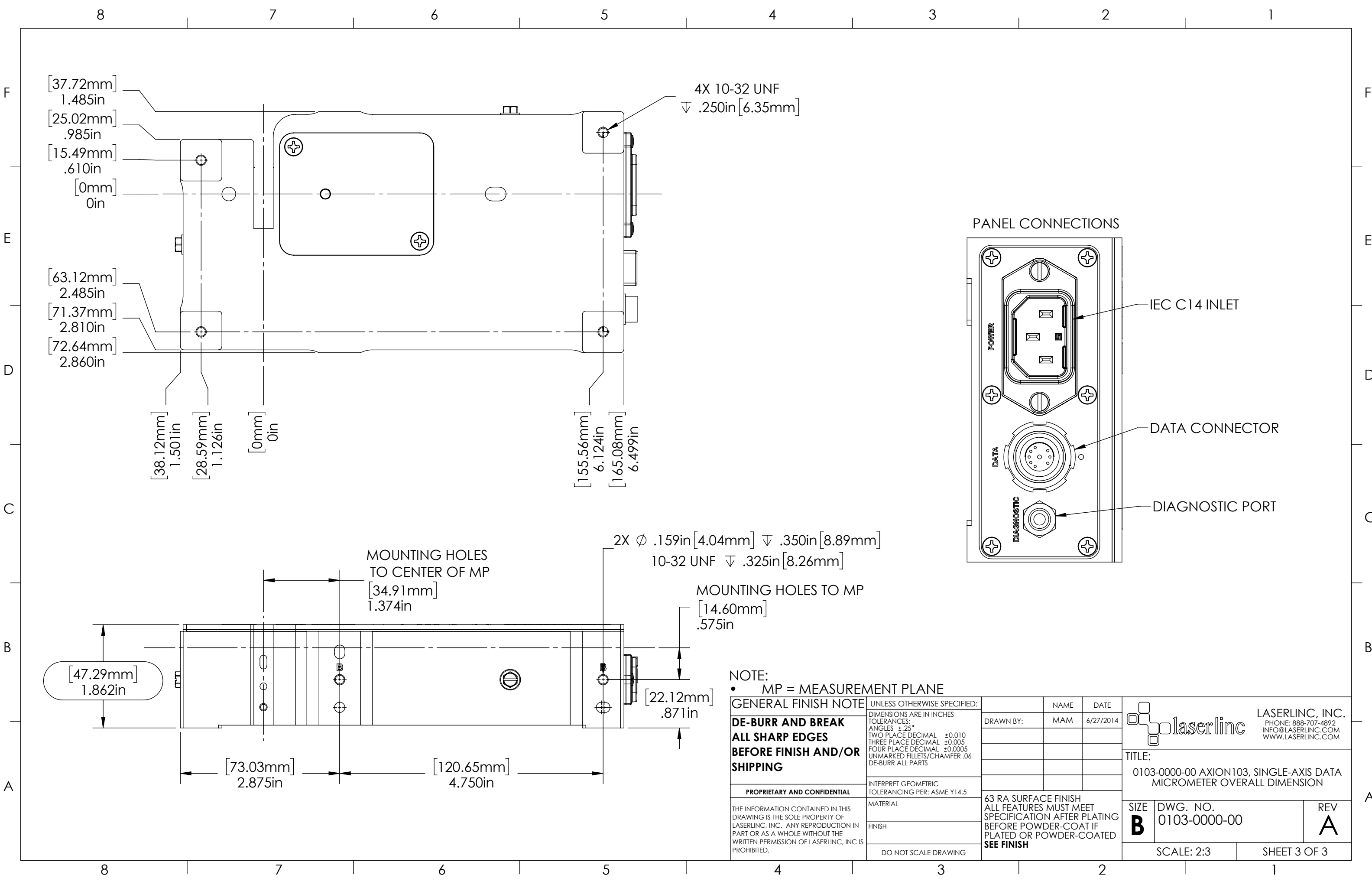
[22.12mm]
 .871in

2X 10-32 UNF
 ∇ .325in [8.26mm]

MOUNTING HOLES
 TO CENTER OF MP
 [34.91mm]
 1.374in

NOTE:
 • MP = MEASUREMENT PLANE

GENERAL FINISH NOTE	UNLESS OTHERWISE SPECIFIED:	NAME	DATE	 LASERLINC, INC. PHONE: 888-707-4892 INFO@LASERLINC.COM WWW.LASERLINC.COM
	DE-BURR AND BREAK ALL SHARP EDGES BEFORE FINISH AND/OR SHIPPING	DIMENSIONS ARE IN INCHES TOLERANCES: ANGLES ±.25° TWO PLACE DECIMAL ±0.010 THREE PLACE DECIMAL ±0.005 FOUR PLACE DECIMAL ±0.0005 UNMARKED FILLETS/CHAMFER .06 DE-BURR ALL PARTS	DRAWN BY:	
PROPRIETARY AND CONFIDENTIAL	INTERPRET GEOMETRIC TOLERANCING PER: ASME Y14.5	63 RA SURFACE FINISH ALL FEATURES MUST MEET SPECIFICATION AFTER PLATING BEFORE POWDER-COAT IF PLATED OR POWDER-COATED SEE FINISH		
THE INFORMATION CONTAINED IN THIS DRAWING IS THE SOLE PROPERTY OF LASERLINC, INC. ANY REPRODUCTION IN PART OR AS A WHOLE WITHOUT THE WRITTEN PERMISSION OF LASERLINC, INC. IS PROHIBITED.	MATERIAL			
	FINISH			
	DO NOT SCALE DRAWING	TITLE: 0103-0000-00 AXION103, SINGLE-AXIS DATA MICROMETER OVERALL DIMENSION		
		SIZE B	DWG. NO. 0103-0000-00	REV A
		SCALE: 2:3		SHEET 2 OF 3



[37.72mm]
1.485in
[25.02mm]
.985in
[15.49mm]
.610in
[0mm]
0in

[63.12mm]
2.485in
[71.37mm]
2.810in
[72.64mm]
2.860in

[38.12mm]
1.501in
[28.59mm]
1.126in
[0mm]
0in

[155.56mm]
6.124in
[165.08mm]
6.499in

4X 10-32 UNF
▽ .250in [6.35mm]

MOUNTING HOLES
TO CENTER OF MP
[34.91mm]
1.374in

2X Ø .159in [4.04mm] ▽ .350in [8.89mm]
10-32 UNF ▽ .325in [8.26mm]

MOUNTING HOLES TO MP
[14.60mm]
.575in

[47.29mm]
1.862in

[73.03mm]
2.875in

[120.65mm]
4.750in

[22.12mm]
.871in

NOTE:
• MP = MEASUREMENT PLANE

GENERAL FINISH NOTE
DE-BURR AND BREAK
ALL SHARP EDGES
BEFORE FINISH AND/OR
SHIPPING

PROPRIETARY AND CONFIDENTIAL
THE INFORMATION CONTAINED IN THIS
DRAWING IS THE SOLE PROPERTY OF
LASERLINC, INC. ANY REPRODUCTION IN
PART OR AS A WHOLE WITHOUT THE
WRITTEN PERMISSION OF LASERLINC, INC. IS
PROHIBITED.

UNLESS OTHERWISE SPECIFIED:
DIMENSIONS ARE IN INCHES
TOLERANCES:
ANGLES ±.25°
TWO PLACE DECIMAL ±0.010
THREE PLACE DECIMAL ±0.005
FOUR PLACE DECIMAL ±0.0005
UNMARKED FILLETS/CHAMFER .06
DE-BURR ALL PARTS
INTERPRET GEOMETRIC
TOLERANCING PER: ASME Y14.5
MATERIAL
FINISH
DO NOT SCALE DRAWING

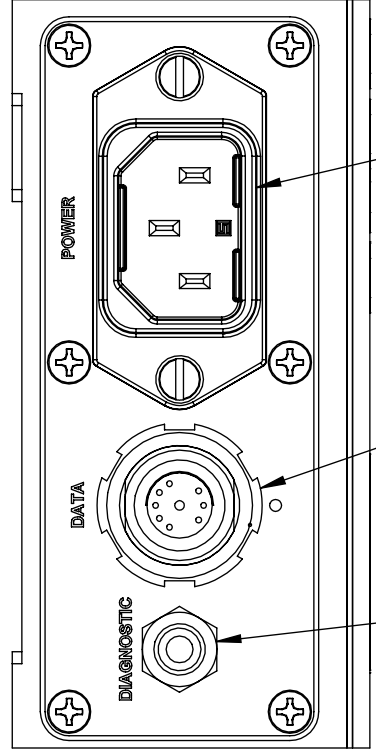
NAME	DATE
MAM	6/27/2014
DRAWN BY:	
63 RA SURFACE FINISH ALL FEATURES MUST MEET SPECIFICATION AFTER PLATING BEFORE POWDER-COAT IF PLATED OR POWDER-COATED SEE FINISH	

laserlinc LASERLINC, INC.
PHONE: 888-707-4892
INFO@LASERLINC.COM
WWW.LASERLINC.COM

TITLE:
0103-0000-00 AXION103, SINGLE-AXIS DATA
MICROMETER OVERALL DIMENSION

SIZE B	DWG. NO. 0103-0000-00	REV A
SCALE: 2:3		SHEET 3 OF 3

PANEL CONNECTIONS



IEC C14 INLET
DATA CONNECTOR
DIAGNOSTIC PORT