

REVISIONS				
ZONE	REV.	DESCRIPTION	DATE	APPROVED
	A	CHECK-IN	8/31/2011	MAM

# 1120-0001-00 AXION1120, SINGLE-AXIS DATA SPLIT-HEAD MICROMETER OVERALL DIMENSIONS

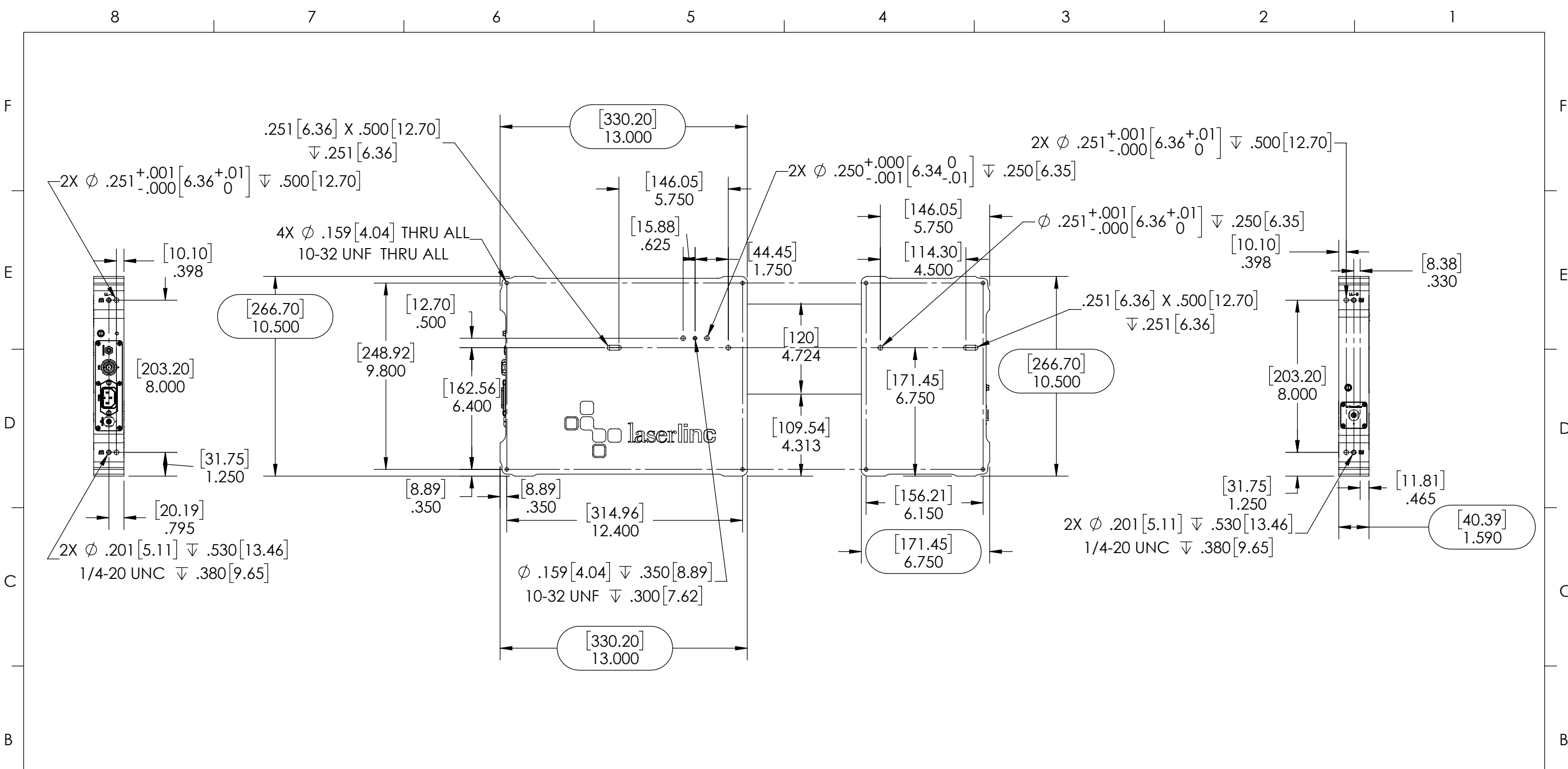
**NOTES:**


- APPROX. WEIGHT: 21 LBS [9.5 KG]
- POWER REQUIREMENTS: 100-240 VAC 50/60 Hz 50 W MAX.
- MEASUREMENTS PER SECOND (Hz): 1 600, 4000 (OPTIONAL)
- RESOLUTION: .000001" [.025µm]
- REPEATABILITY<sup>2</sup> UNAVERAGED: ±.002" [±.051mm]
- REPEATABILITY<sup>2</sup> TWO SECOND: ±.00004" [±1.0µm]

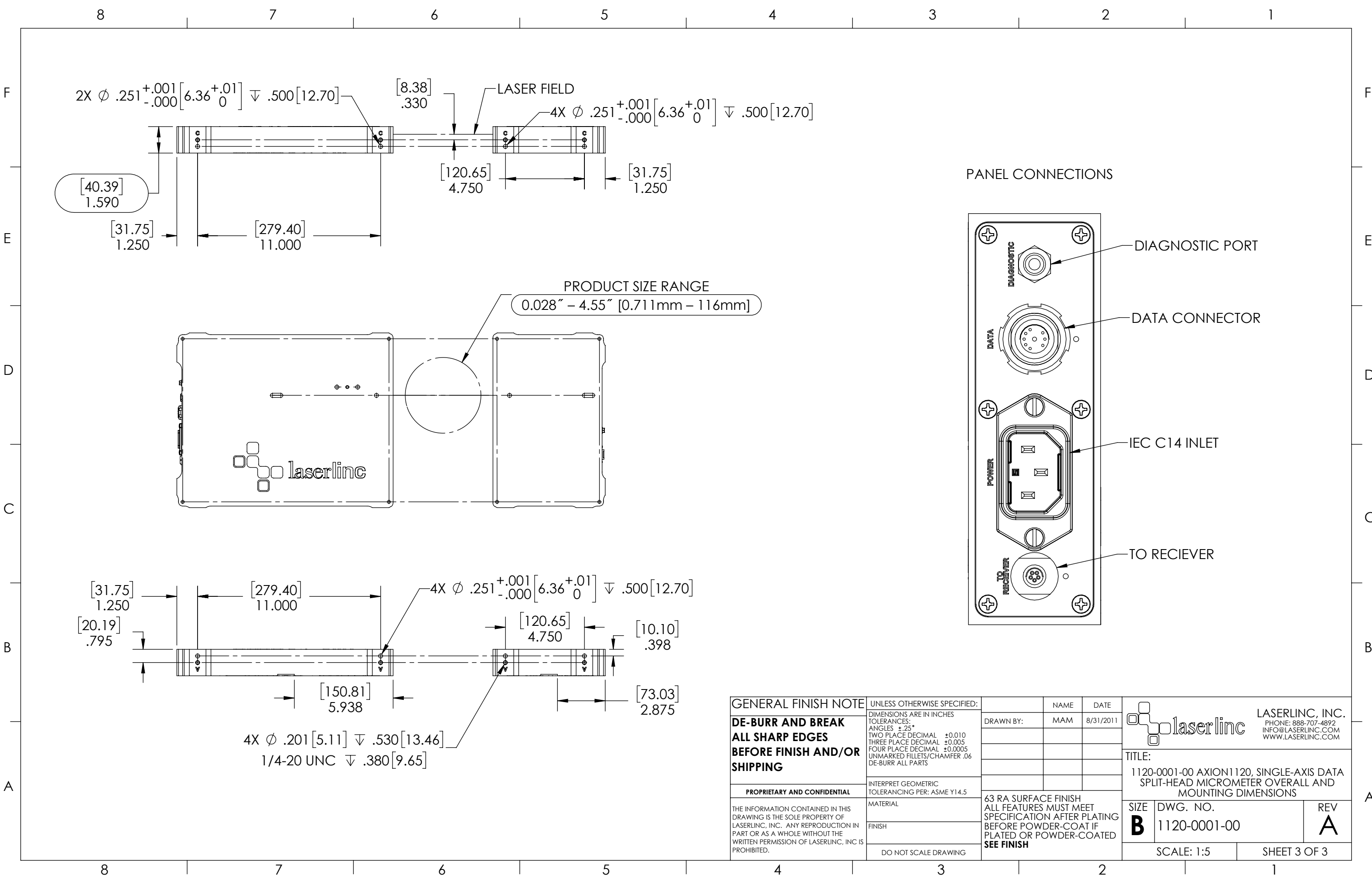
**INDEX**

- (1) COVER PAGE
- (2) DIMENSIONS
- (3) DIMENSIONS 2

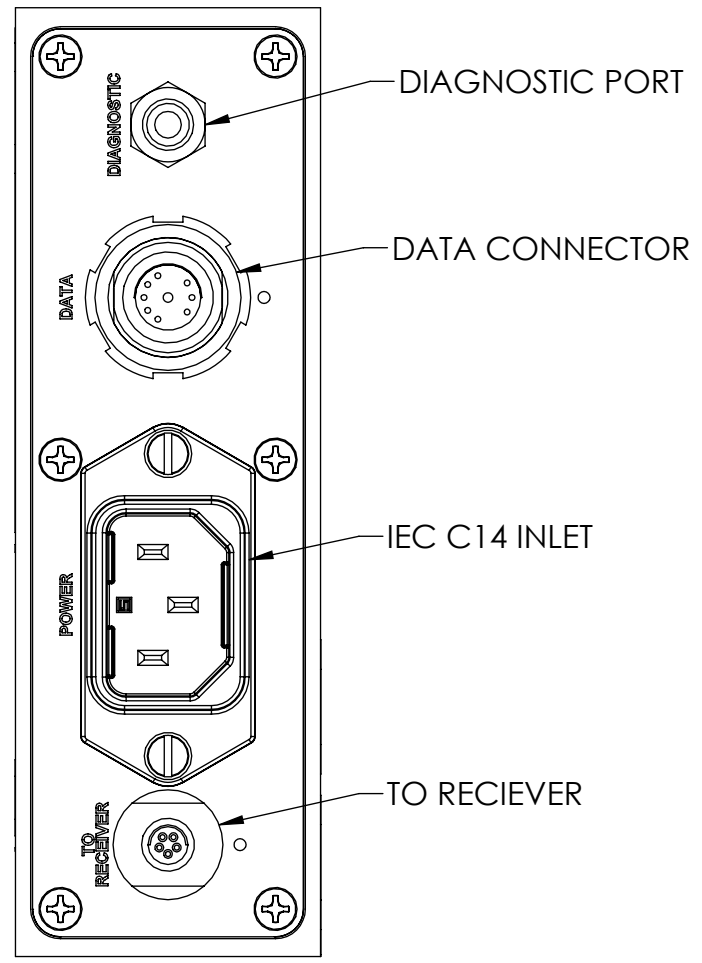
<b>GENERAL FINISH NOTE</b>		UNLESS OTHERWISE SPECIFIED:		NAME	DATE	 <b>LASERLINC, INC.</b> PHONE: 888-707-4892 INFO@LASERLINC.COM WWW.LASERLINC.COM
<b>DE-BURR AND BREAK ALL SHARP EDGES BEFORE FINISH AND/OR SHIPPING</b>		DIMENSIONS ARE IN INCHES TOLERANCES: ANGLES ±.25 TWO PLACE DECIMAL ±0.010 THREE PLACE DECIMAL ±0.005 FOUR PLACE DECIMAL ±0.0005 UNMARKED FILLETS/CHAMFER .06 DE-BURR ALL PARTS		DRAWN BY:	MAM 8/31/2011	
<b>PROPRIETARY AND CONFIDENTIAL</b>		INTERPRET GEOMETRIC TOLERANCING PER: ASME Y14.5				<b>TITLE:</b>
THE INFORMATION CONTAINED IN THIS DRAWING IS THE SOLE PROPERTY OF LASERLINC, INC. ANY REPRODUCTION IN PART OR AS A WHOLE WITHOUT THE WRITTEN PERMISSION OF LASERLINC, INC. IS PROHIBITED.		MATERIAL		63 RA SURFACE FINISH ALL FEATURES MUST MEET SPECIFICATION AFTER PLATING BEFORE POWDER-COAT IF PLATED OR POWDER-COATED <b>SEE FINISH</b>		<b>SIZE</b>
		FINISH				<b>DWG. NO.</b>
		DO NOT SCALE DRAWING				<b>REV</b>
						<b>A</b>
				SCALE: 1:3		SHEET 1 OF 3



<b>GENERAL FINISH NOTE</b> <b>DE-BURR AND BREAK</b> <b>ALL SHARP EDGES</b> <b>BEFORE FINISH AND/OR SHIPPING</b>	UNLESS OTHERWISE SPECIFIED:	NAME	DATE	 <b>LASERLINC, INC.</b> PHONE: 888-707-4892 INFO@LASERLINC.COM WWW.LASERLINC.COM
	DIMENSIONS ARE IN INCHES TOLERANCES: ANGLES $\pm .25$ TWO PLACE DECIMAL $\pm 0.010$ THREE PLACE DECIMAL $\pm 0.005$ FOUR PLACE DECIMAL $\pm 0.0005$ UNMARKED FILLETS/CHAMFER .06 DE-BURR ALL PARTS	DRAWN BY:	MAM	
<b>PROPRIETARY AND CONFIDENTIAL</b> THE INFORMATION CONTAINED IN THIS DRAWING IS THE SOLE PROPERTY OF LASERLINC, INC. ANY REPRODUCTION IN PART OR AS A WHOLE WITHOUT THE WRITTEN PERMISSION OF LASERLINC, INC. IS PROHIBITED.	INTERPRET GEOMETRIC TOLERANCING PER: ASME Y14.5 MATERIAL FINISH DO NOT SCALE DRAWING	63 RA SURFACE FINISH ALL FEATURES MUST MEET SPECIFICATION AFTER PLATING BEFORE POWDER-COAT IF PLATED OR POWDER-COATED <b>SEE FINISH</b>		TITLE: 1120-0001-00 AXION1120, SINGLE-AXIS DATA SPLIT-HEAD MICROMETER OVERALL AND MOUNTING DIMENSIONS
		SIZE	DWG. NO.	REV
		<b>B</b>	1120-0001-00	<b>A</b>
		SCALE: 1:5		SHEET 2 OF 3



PANEL CONNECTIONS



PRODUCT SIZE RANGE  
0.028" - 4.55" [0.711mm - 116mm]

<b>GENERAL FINISH NOTE</b>		UNLESS OTHERWISE SPECIFIED:		NAME	DATE
<b>DE-BURR AND BREAK ALL SHARP EDGES BEFORE FINISH AND/OR SHIPPING</b>		DIMENSIONS ARE IN INCHES TOLERANCES: ANGLES ±.25° TWO PLACE DECIMAL ±0.010 THREE PLACE DECIMAL ±0.005 FOUR PLACE DECIMAL ±0.0005 UNMARKED FILLETS/CHAMFER .06 DE-BURR ALL PARTS		DRAWN BY:	MAM 8/31/2011
<b>PROPRIETARY AND CONFIDENTIAL</b>		INTERPRET GEOMETRIC TOLERANCING PER: ASME Y14.5			
THE INFORMATION CONTAINED IN THIS DRAWING IS THE SOLE PROPERTY OF LASERLINC, INC. ANY REPRODUCTION IN PART OR AS A WHOLE WITHOUT THE WRITTEN PERMISSION OF LASERLINC, INC. IS PROHIBITED.		MATERIAL		63 RA SURFACE FINISH ALL FEATURES MUST MEET SPECIFICATION AFTER PLATING BEFORE POWDER-COAT IF PLATED OR POWDER-COATED <b>SEE FINISH</b>	
		FINISH		TITLE: 1120-0001-00 AXION1120, SINGLE-AXIS DATA SPLIT-HEAD MICROMETER OVERALL AND MOUNTING DIMENSIONS	
		DO NOT SCALE DRAWING		SIZE <b>B</b>	DWG. NO. 1120-0001-00
				REV <b>A</b>	
				SCALE: 1:5	
				SHEET 3 OF 3	

**laserlinc** LASERLINC, INC.  
PHONE: 888-707-4892  
INFO@LASERLINC.COM  
WWW.LASERLINC.COM