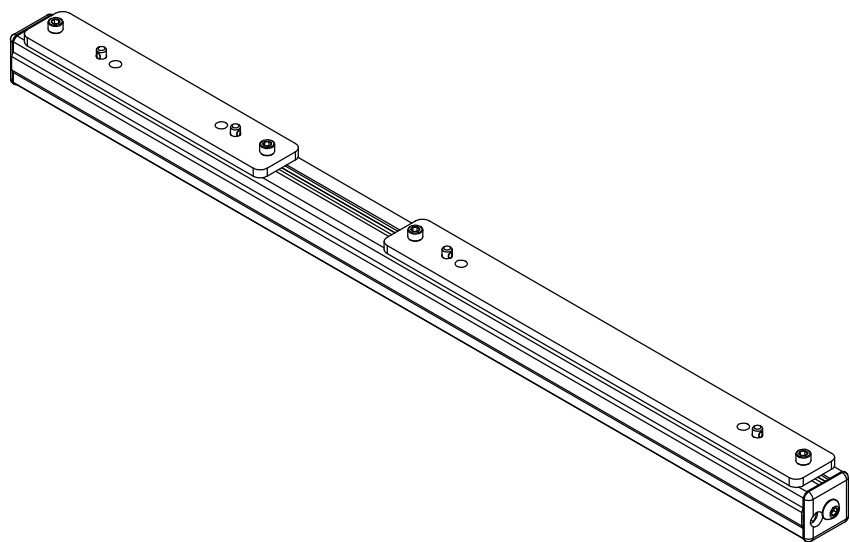


8 7 6 5 4 3 2 1

REVISIONS				
ZONE	REV.	DESCRIPTION	DATE	APPROVED
	A	CHECK-IN	2/18/2013	MAM
	B	DRAWING CHANGED TO ASSEMBLY/MOUNTING INSTRUCTIONS	3/29/2023	CJM
	C	ADDING MICROMETER AND CABLE TO ASSEMBLY	8/20/2024	NGN

F  
E  
D  
C  
B  
A

F  
E  
D  
C  
B  
A




# AXION 1120 SINGLE-AXIS LASER MICROMETER W/ RAIL MOUNT, 6.00 IN [152.4 mm] SEPARATION

## INDEX

- (1) COVER PAGE
- (2) BOM TABLE
- (3) 1120 MICROMETER MOUNTING
- (4) 1120 MICROMETER OVERALLS

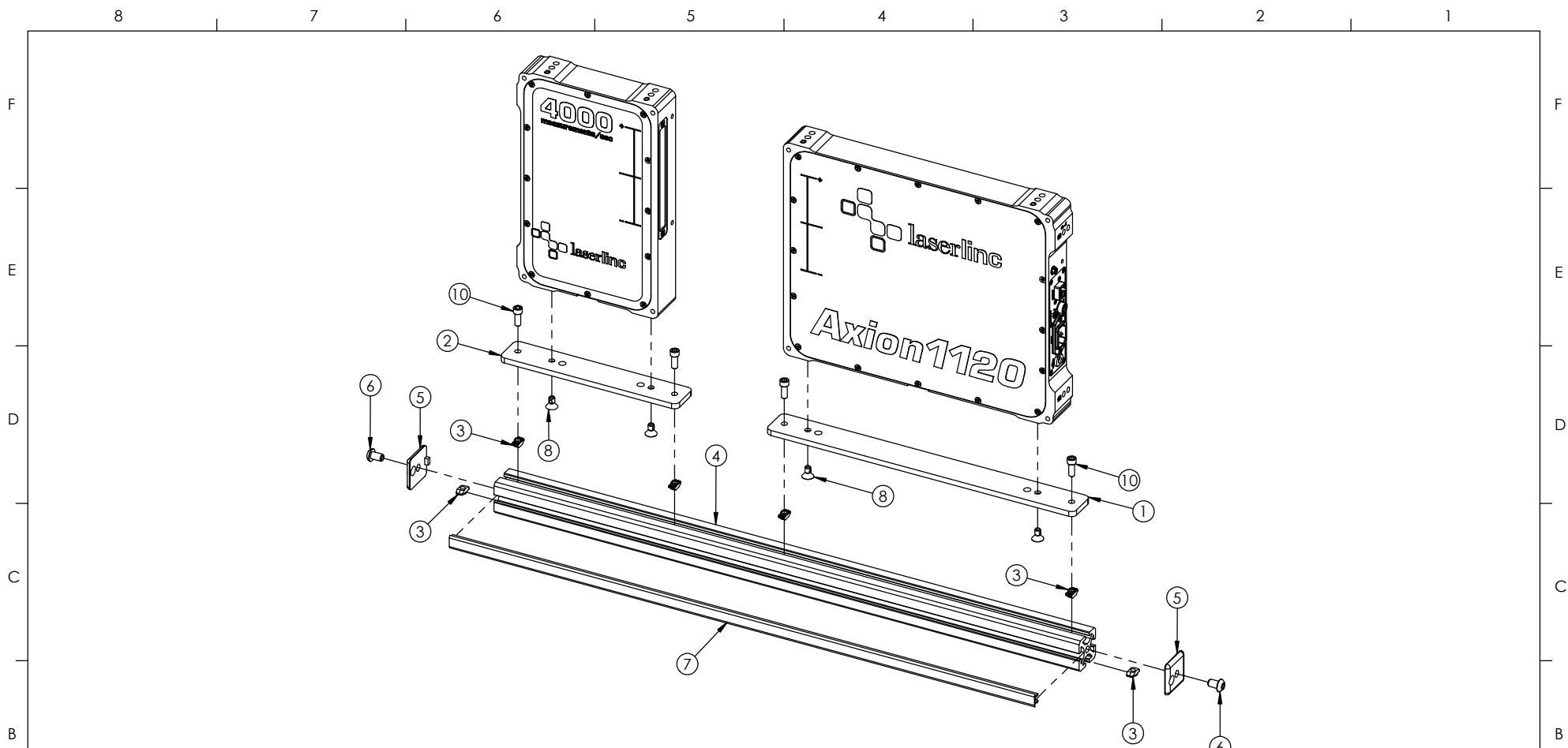
8 7 6 5 4 3 2 1

<b>GENERAL FINISH NOTE</b> <b>DE-BURR AND BREAK</b> <b>ALL SHARP EDGES</b> <b>BEFORE FINISH AND/OR SHIPPING</b>	UNLESS OTHERWISE SPECIFIED: DIMENSIONS ARE IN INCHES TOLERANCES: ANGLES ±.25° TWO PLACE DECIMAL ±0.010 THREE PLACE DECIMAL ±0.005 FOUR PLACE DECIMAL ±0.0005 UNMARKED FILLETS/CHAMFER .06 DE-BURR ALL PARTS	NAME MAM	DATE 11/6/2019	 <b>LASERLINE</b> LASERLINE, INC. PHONE: 937-318-2440 INFO@LASERLINE.COM WWW.LASERLINE.COM
	<b>PROPRIETARY AND CONFIDENTIAL</b> INTERPRET GEOMETRIC TOLERANCING PER: ASME Y14.5	MATERIAL FINISH DO NOT SCALE DRAWING	63 RA SURFACE FINISH ALL FEATURES MUST MEET SPECIFICATION AFTER PLATING BEFORE POWDER-COAT IF PLATED OR POWDER-COATED <b>SEE FINISH</b>	
THE INFORMATION CONTAINED IN THIS DRAWING IS THE SOLE PROPERTY OF LASERLINE, INC. ANY REPRODUCTION IN PART OR AS A WHOLE WITHOUT THE WRITTEN PERMISSION OF LASERLINE, INC IS PROHIBITED.	SIZE <b>B</b>	DWG. NO. 1121-0000-27	REV <b>C</b>	SCALE: 1:4 SHEET 1 OF 4

ITEM NO.	Number	DESCRIPTION	Part Location	QTY.
1	1121-3202-05	Axion1120 TX Rail Adaptor	41-B	1
2	1121-3203-05	Axion1120 RX Rail Adaptor	41-B	1
3	1121-2201-28	5-16 Slot 1-4 - 20 t-nut	40-D	6
4	1121-3400-28-28	Aluminum Extrusions, 1 1/2in x 1 1/2in x 28in		1
5	1121-3401-28	Split Head 1.5x1.5 Rail End Plate	40-D	2
6	1121-2207-04	5/16-18 x 1/2L BHCS - Black Oxide	40-C	2
7	1121-2208-04-28	5/16" T-Slot Cover - Cut to 28" Length	40-A	1
8	4001-2248-04	1/4-20 x 1/2L FH SHCS SS - Thread Lock	19-E	4
9	1120-0002-00-TX	Axion1120, Single-Axis NetLinc Split-Head Micrometer		1
10	4001-2239-04	1/4-20 x 5/8L SHSC SS	19-C	4
11	0160-0100-12-49	Axion130 / 160 / 1120 / 1240 TX-RX Interface Cable, 49in Long		1

A	<b>GENERAL FINISH NOTE</b> <b>DE-BURR AND BREAK</b> <b>ALL SHARP EDGES</b> <b>BEFORE FINISH AND/OR SHIPPING</b>		UNLESS OTHERWISE SPECIFIED: DIMENSIONS ARE IN INCHES TOLERANCES: ANGLES ±.25° TWO PLACE DECIMAL ±0.010 THREE PLACE DECIMAL ±0.005 FOUR PLACE DECIMAL ±0.0005 UNMARKED FILLETS/CHAMFER .06 DE-BURR ALL PARTS		NAME MAM	DATE 11/6/2019	 <b>LASERLINC, INC.</b> PHONE: 937-318-2440 INFO@LASERLINC.COM WWW.LASERLINC.COM			
	<b>PROPRIETARY AND CONFIDENTIAL</b>		INTERPRET GEOMETRIC TOLERANCING PER: ASME Y14.5		TITLE: AXION1120 SINGLE-AXIS LASER MICROMETER W/ RAIL MOUNT, 6.00 IN [152.4 mm] SEPARATION					
	THE INFORMATION CONTAINED IN THIS DRAWING IS THE SOLE PROPERTY OF LASERLINC, INC. ANY REPRODUCTION IN PART OR AS A WHOLE WITHOUT THE WRITTEN PERMISSION OF LASERLINC, INC IS PROHIBITED.		MATERIAL FINISH DO NOT SCALE DRAWING		.63 RA SURFACE FINISH ALL FEATURES MUST MEET SPECIFICATION AFTER PLATING BEFORE POWDER-COAT IF PLATED OR POWDER-COATED <b>SEE FINISH</b>			SIZE <b>B</b>	DWG. NO. 1121-0000-27	REV <b>C</b>
					SCALE: 1:3			SHEET 2 OF 4		

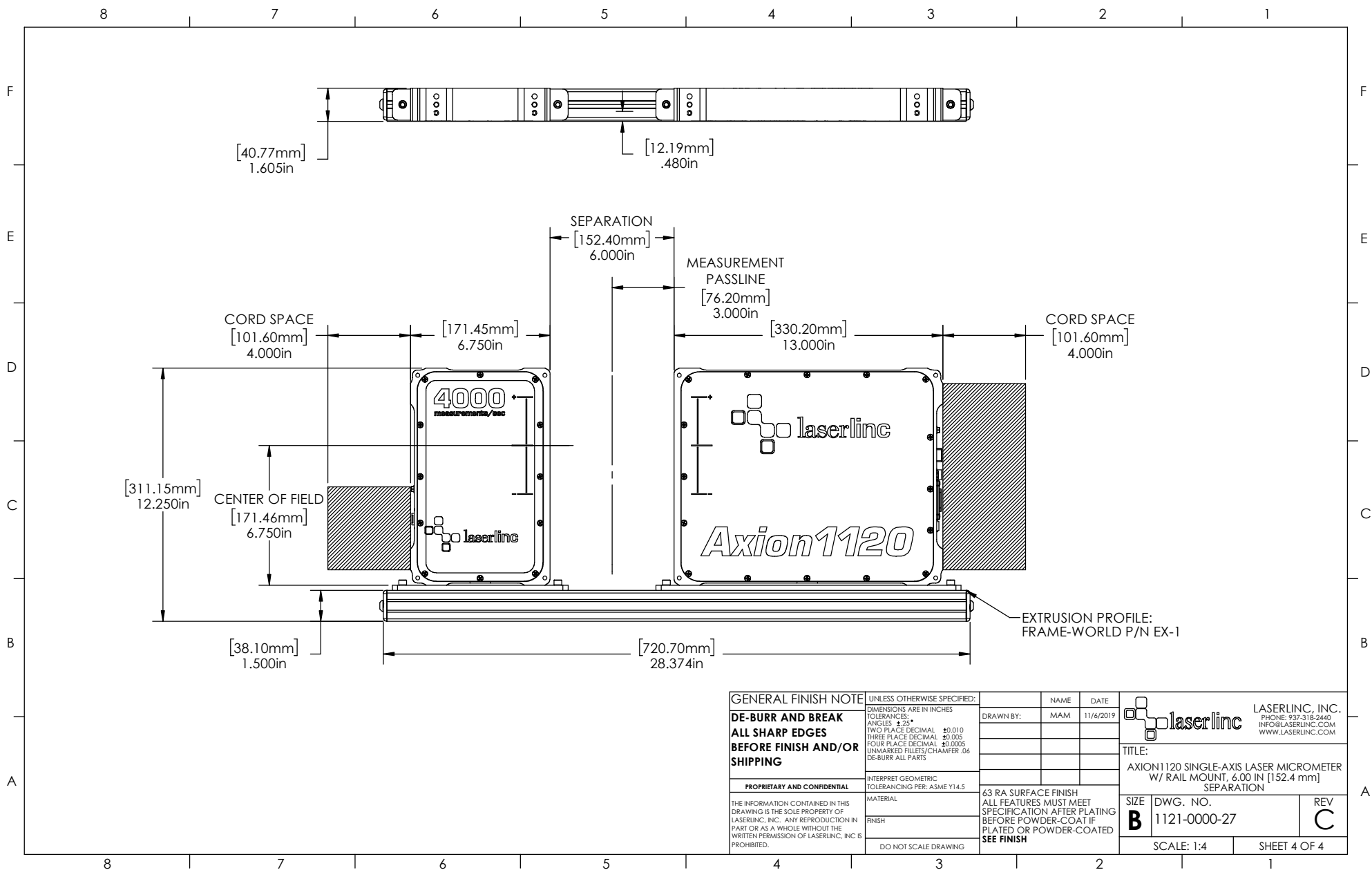
8 7 6 5 4 3 2 1



**ASSEMBLY NOTES:**

1. THREAD ITEM ⑩ THROUGH BOTH ITEM ② & ①, AND BEGIN THREADING INTO ITEM ③.
2. THREAD ITEM ⑧ INTO MICROMETER THROUGH BOTH ITEM ② & ①.
3. SLIDE ITEM ③ OF THE SUBASSEMBLY INTO THE RAIL SLOT ON ITEM ④. THEN TIGHTEN ITEM ⑩ WITH 5/32" HEX KEY TOOL.
4. SLIDE 2 ITEM ③'S INTO THE BOTTOM RAIL SLOT OF ITEM ④.
5. ATTACH ITEM ⑤ TO ITEM ④ WITH ITEM ⑥. TIGHTEN USING 3/16" HEX KEY TOOL.
6. SNAP ITEM ⑦ INTO ITEM ④.

<b>GENERAL FINISH NOTE</b> <b>DE-BURR AND BREAK</b> <b>ALL SHARP EDGES</b> <b>BEFORE FINISH AND/OR SHIPPING</b>	UNLESS OTHERWISE SPECIFIED: DIMENSIONS ARE IN INCHES TOLERANCES: ANGLES ±.25° TWO PLACE DECIMAL ±.010 THREE PLACE DECIMAL ±.005 FOUR PLACE DECIMAL ±.0005 UNMARKED FILLETS/CHAMFER .06 DE-BURR ALL PARTS	DRAWN BY: MAM NAME: MAM DATE: 11/6/2019	LASERLINC, INC. PHONE: 937-318-2440 INFO@LASERLINC.COM WWW.LASERLINC.COM	
	<b>PROPRIETARY AND CONFIDENTIAL</b> THE INFORMATION CONTAINED IN THIS DRAWING IS THE SOLE PROPERTY OF LASERLINC, INC. ANY REPRODUCTION IN PART OR AS A WHOLE WITHOUT THE WRITTEN PERMISSION OF LASERLINC, INC IS PROHIBITED.	INTERPRET GEOMETRIC TOLERANCING PER: ASME Y14.5 MATERIAL: FINISH: DO NOT SCALE DRAWING	63 RA SURFACE FINISH ALL FEATURES MUST MEET SPECIFICATION AFTER PLATING BEFORE POWDER-COAT IF PLATED OR POWDER-COATED <b>SEE FINISH</b>	<b>TITLE:</b> AXION 1120 SINGLE-AXIS LASER MICROMETER W/ RAIL MOUNT, 6.00 IN [152.4 mm] SEPARATION
		<b>SIZE</b> <b>B</b>	<b>DWG. NO.</b> 1121-0000-27	<b>REV</b> <b>C</b>
		SCALE: 1:3		SHEET 3 OF 4



<b>GENERAL FINISH NOTE</b> <b>DE-BURR AND BREAK</b> <b>ALL SHARP EDGES</b> <b>BEFORE FINISH AND/OR SHIPPING</b>	UNLESS OTHERWISE SPECIFIED: DIMENSIONS ARE IN INCHES TOLERANCES: ANGLES ±.25° TWO PLACE DECIMAL ±.010 THREE PLACE DECIMAL ±.005 FOUR PLACE DECIMAL ±.0005 UNMARKED RILLETS/CHAMFER .06 DE-BURR ALL PARTS	DRAWN BY: MAM NAME: MAM DATE: 11/6/2019	LASERLINC, INC. PHONE: 937-318-2440 INFO@LASERLINC.COM WWW.LASERLINC.COM
	PROPRIETARY AND CONFIDENTIAL THE INFORMATION CONTAINED IN THIS DRAWING IS THE SOLE PROPERTY OF LASERLINC, INC. ANY REPRODUCTION IN PART OR AS A WHOLE WITHOUT THE WRITTEN PERMISSION OF LASERLINC, INC IS PROHIBITED.	INTERPRET GEOMETRIC TOLERANCING PER: ASME Y14.5 MATERIAL: FINISH: DO NOT SCALE DRAWING	63 RA SURFACE FINISH ALL FEATURES MUST MEET SPECIFICATION AFTER PLATING BEFORE POWDER-COAT IF PLATED OR POWDER-COATED <b>SEE FINISH</b>
		SIZE <b>B</b> DWG. NO. 1121-0000-27 SCALE: 1:4	REV <b>C</b> SHEET 4 OF 4