


REVISIONS				
ZONE	REV.	DESCRIPTION	DATE	APPROVED
	A	CHECK-IN	2/18/2013	MAM
	B	DRAWING CHANGED TO ASSEMBLY/MOUNTING INSTRUCTIONS	3/29/2023	CJM
	C	ADDING MICROMETER AND CABLE TO ASSEMBLY	8/20/2024	NGN

# AXION1120 SINGLE-AXIS LASER MICROMETER W/ RAIL MOUNT, 8.00 IN [203.2 mm] SEPARATION

## INDEX

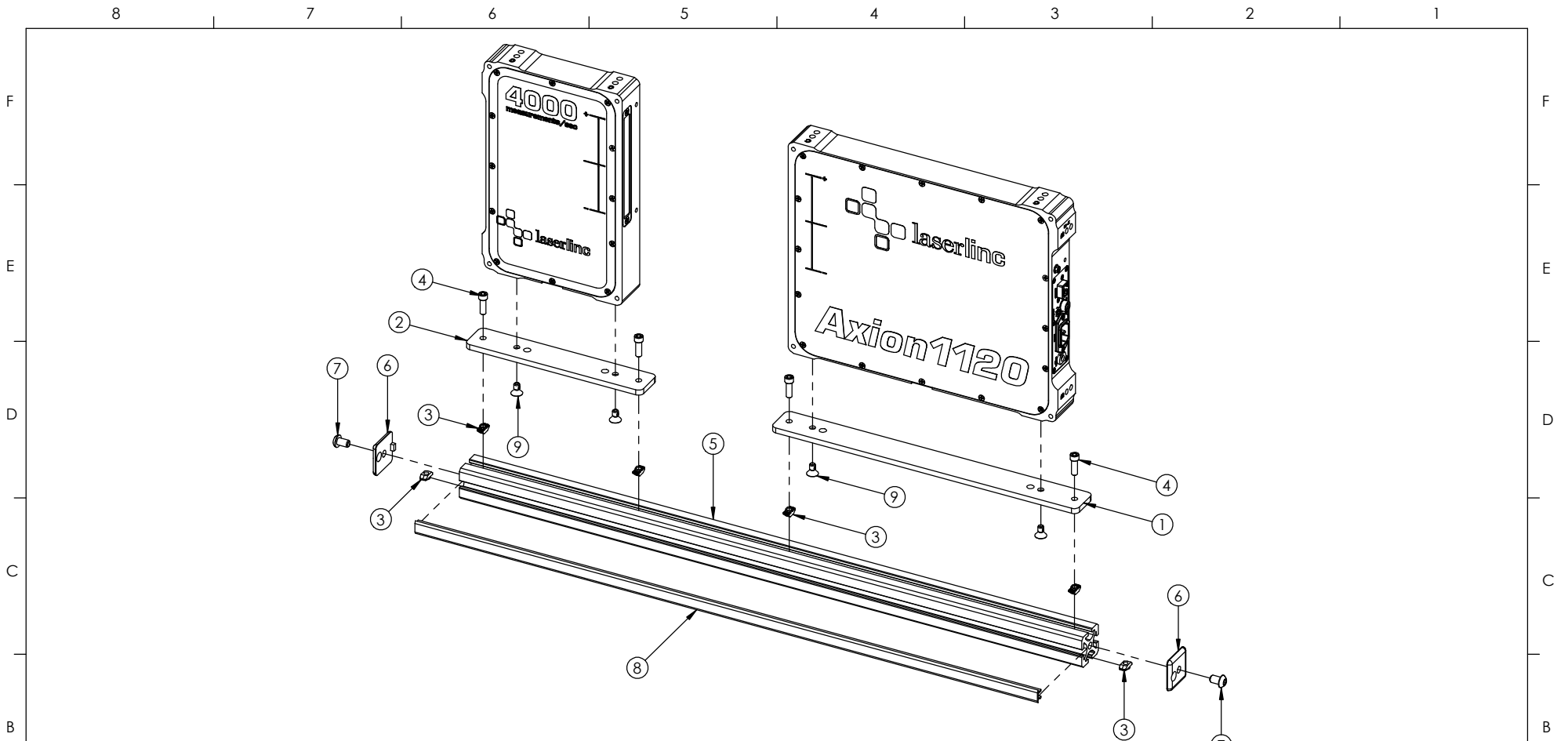
- (1) COVER PAGE
- (2) BOM TABLE
- (3) MOUNTED DIMENSIONS
- (4) DIMENSIONS

<b>GENERAL FINISH NOTE</b>		UNLESS OTHERWISE SPECIFIED:		NAME	DATE
<b>DE-BURR AND BREAK ALL SHARP EDGES BEFORE FINISH AND/OR SHIPPING</b>		DIMENSIONS ARE IN INCHES TOLERANCES: ANGLES $\pm 25^\circ$ TWO PLACE DECIMAL $\pm 0.010$ THREE PLACE DECIMAL $\pm 0.005$ FOUR PLACE DECIMAL $\pm 0.0005$ UNMARKED RILLETS/CHAMFER .06 DE-BURR ALL PARTS		DRAWN BY:	MAM 3/29/2023
<b>PROPRIETARY AND CONFIDENTIAL</b>		INTERPRET GEOMETRIC TOLERANCING PER: ASME Y14.5			
THE INFORMATION CONTAINED IN THIS DRAWING IS THE SOLE PROPERTY OF LASERLINC, INC. ANY REPRODUCTION IN PART OR AS A WHOLE WITHOUT THE WRITTEN PERMISSION OF LASERLINC, INC IS PROHIBITED.		MATERIAL		63 RA SURFACE FINISH ALL FEATURES MUST MEET SPECIFICATION AFTER PLATING BEFORE POWDER-COAT IF PLATED OR POWDER-COATED <b>SEE FINISH</b>	
		FINISH		DO NOT SCALE DRAWING	
				 <b>LASERLINC, INC.</b> PHONE: 937-318-2440 INFO@LASERLINC.COM WWW.LASERLINC.COM	
		TITLE:		AXION1120 SINGLE-AXIS LASER MICROMETER W/ RAIL MOUNT, 8.00 IN [203.2 mm] SEPARATION	
		SIZE	DWG. NO.	REV	
		<b>B</b>	1121-0001-27	<b>C</b>	
		SCALE: 1:4		SHEET 1 OF 4	

ITEM NO.	Number	DESCRIPTION	Part Location	QTY.
1	1121-3202-05	Axion1120 TX Rail Adaptor	41-B	1
2	1121-3203-05	Axion1120 RX Rail Adaptor	41-B	1
3	1121-2201-28	5-16 Slot 1-4 - 20 t-nut	40-D	6
4	0000-2228-04	1/4-20 x 3/4L SHCS SS	19-C	4
5	1121-3400-28-30	Aluminum Extrusions, 1 1/2in x 1 1/2in x 30in		1
6	1121-3401-28	Split Head 1.5x1.5 Rail End Plate	40-D	2
7	1121-2207-04	5/16-18 x 1/2L BHCS - Black Oxide	40-C	2
8	1121-2208-04-30	5/16" T-Slot Cover - Cut to 30" Length	40-A	1
9	4001-2248-04	1/4-20 x 1/2L FH SHCS SS - Thread Lock	19-E	4
10	1120-0002-00-TX	Axion1120, Single-Axis NetLinc Split-Head Micrometer		1
11	0160-0100-12-51	Axion130 / 160 / 1120 / 1240 TX-RX Interface Cable, 51in Long		1

A	<b>GENERAL FINISH NOTE</b> <b>DE-BURR AND BREAK</b> <b>ALL SHARP EDGES</b> <b>BEFORE FINISH AND/OR SHIPPING</b>		UNLESS OTHERWISE SPECIFIED: DIMENSIONS ARE IN INCHES TOLERANCES: ANGLES ±.25° TWO PLACE DECIMAL ±0.010 THREE PLACE DECIMAL ±0.005 FOUR PLACE DECIMAL ±0.0005 UNMARKED FILLETS/CHAMFER .06 DE-BURR ALL PARTS		NAME MAM	DATE 3/29/2023	 <b>LASERLINE, INC.</b> PHONE: 937-318-2440 INFO@LASERLINE.COM WWW.LASERLINE.COM			
	<b>PROPRIETARY AND CONFIDENTIAL</b>		INTERPRET GEOMETRIC TOLERANCING PER: ASME Y14.5		<b>63 RA SURFACE FINISH</b> ALL FEATURES MUST MEET SPECIFICATION AFTER PLATING BEFORE POWDER-COAT IF PLATED OR POWDER-COATED <b>SEE FINISH</b>			<b>TITLE:</b> AXION1120 SINGLE-AXIS LASER MICROMETER W/ RAIL MOUNT, 8.00 IN [203.2 mm] SEPARATION		
	THE INFORMATION CONTAINED IN THIS DRAWING IS THE SOLE PROPERTY OF LASERLINE, INC. ANY REPRODUCTION IN PART OR AS A WHOLE WITHOUT THE WRITTEN PERMISSION OF LASERLINE, INC IS PROHIBITED.		MATERIAL		FINISH			SIZE <b>B</b>	DWG. NO. 1121-0001-27	REV <b>C</b>
			DO NOT SCALE DRAWING		SCALE: 1:3			SHEET 2 OF 4		

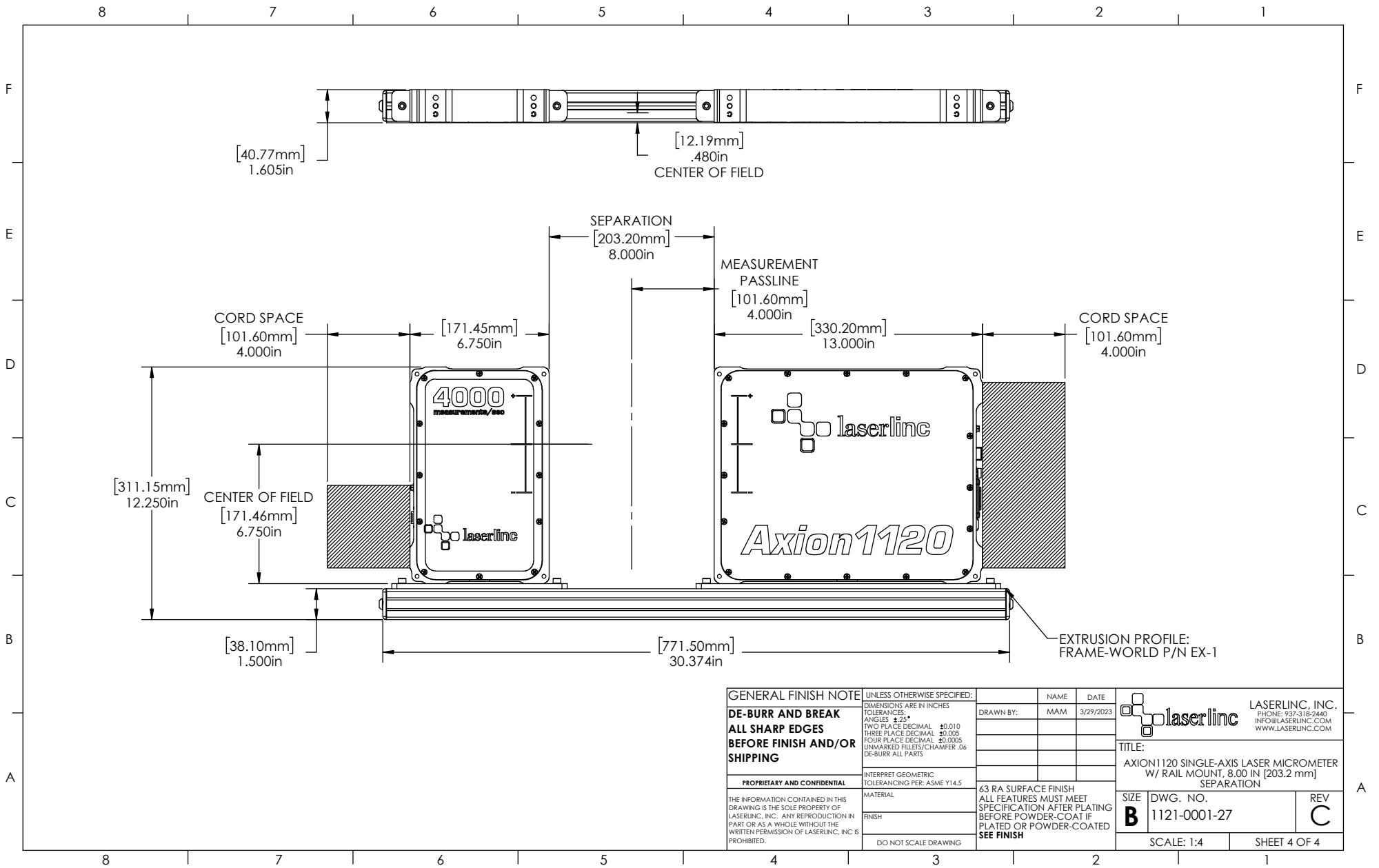
8 7 6 5 4 3 2 1



**ASSEMBLY NOTES:**

1. THREAD ITEM ④ THROUGH BOTH ITEM ② & ①, AND BEGIN THREADING INTO ITEM ③.
2. THREAD ITEM ⑨ INTO MICROMETER THROUGH BOTH ITEM ② & ①.
3. SLIDE ITEM ③ OF THE SUBASSEMBLY INTO THE RAIL SLOT ON ITEM ⑤. THEN TIGHTEN ITEM ④ WITH 5/32" HEX KEY TOOL.
4. SLIDE 2 ITEM ③'S INTO THE BOTTOM RAIL SLOT OF ITEM ⑤.
5. ATTACH ITEM ⑥ TO ITEM ⑤ WITH ITEM ⑦. TIGHTEN USING 3/16" HEX KEY TOOL.
6. SNAP ITEM ⑧ INTO ITEM ⑤.

<b>GENERAL FINISH NOTE</b>		UNLESS OTHERWISE SPECIFIED:		NAME	DATE
<b>DE-BURR AND BREAK ALL SHARP EDGES BEFORE FINISH AND/OR SHIPPING</b>		DIMENSIONS ARE IN INCHES		DRAWN BY:	MAM 3/29/2023
<b>PROPRIETARY AND CONFIDENTIAL</b>		TOLERANCES:			
		INTERPRET GEOMETRIC TOLERANCING PER: ASME Y14.5			
THE INFORMATION CONTAINED IN THIS DRAWING IS THE SOLE PROPERTY OF LASERLINE, INC. ANY REPRODUCTION IN PART OR AS A WHOLE WITHOUT THE WRITTEN PERMISSION OF LASERLINE, INC IS PROHIBITED.		MATERIAL		63 RA SURFACE FINISH ALL FEATURES MUST MEET SPECIFICATION AFTER PLATING BEFORE POWDER-COAT IF PLATED OR POWDER-COATED <b>SEE FINISH</b>	
		FINISH			
		DO NOT SCALE DRAWING		SCALE: 1:3	
				SHEET 3 OF 4	
				LASERLINE, INC. PHONE: 937-518-2440 INFO@LASERLINE.COM WWW.LASERLINE.COM	
				TITLE: AXION 1120 SINGLE-AXIS LASER MICROMETER W/ RAIL MOUNT, 8.00 IN [203.2 mm] SEPARATION	
				SIZE <b>B</b>	DWG. NO. 1121-0001-27
				REV <b>C</b>	



<b>GENERAL FINISH NOTE</b> <b>DE-BURR AND BREAK</b> <b>ALL SHARP EDGES</b> <b>BEFORE FINISH AND/OR SHIPPING</b>	UNLESS OTHERWISE SPECIFIED: DIMENSIONS ARE IN INCHES TOLERANCES: ANGLES ±.25° TWO PLACE DECIMAL ±0.010 THREE PLACE DECIMAL ±0.005 FOUR PLACE DECIMAL ±0.0005 UNMARKED FILLETS/CHAMFER .06 DE-BURR ALL PARTS	NAME MAM	DATE 3/29/2023		LASERLINE, INC. PHONE: 937-318-2440 INFO@LASERLINE.COM WWW.LASERLINE.COM
	PROPRIETARY AND CONFIDENTIAL THE INFORMATION CONTAINED IN THIS DRAWING IS THE SOLE PROPERTY OF LASERLINE, INC. ANY REPRODUCTION IN PART OR AS A WHOLE WITHOUT THE WRITTEN PERMISSION OF LASERLINE, INC IS PROHIBITED.	INTERPRET GEOMETRIC TOLERANCING PER: ASME Y14.5	DRAWN BY:		
63 RA SURFACE FINISH ALL FEATURES MUST MEET SPECIFICATION AFTER PLATING BEFORE POWDER-COAT IF PLATED OR POWDER-COATED <b>SEE FINISH</b>	MATERIAL FINISH DO NOT SCALE DRAWING	SIZE <b>B</b>	DWG. NO. 1121-0001-27	REV <b>C</b>	SCALE: 1:4 SHEET 4 OF 4