


| REVISIONS |      |   |           |          |
|-----------|------|---|-----------|----------|
| ZONE      | REV. | DESCRIPTION                                       | DATE      | APPROVED |
|           | A    | CHECK-IN  | 2/18/2013 | MAM      |
|           | B    | DRAWING CHANGED TO ASSEMBLY/MOUNTING INSTRUCTIONS | 3/29/2023 | CJM      |
|           | C    | ADDINT MICROMETER AND CABLE TO ASSEMBLY           | 8/20/2024 | NGN      |

# AXION1120 SINGLE-AXIS LASER MICROMETER W/ RAIL MOUNT, 10.00 IN [254.0 mm] SEPARATION

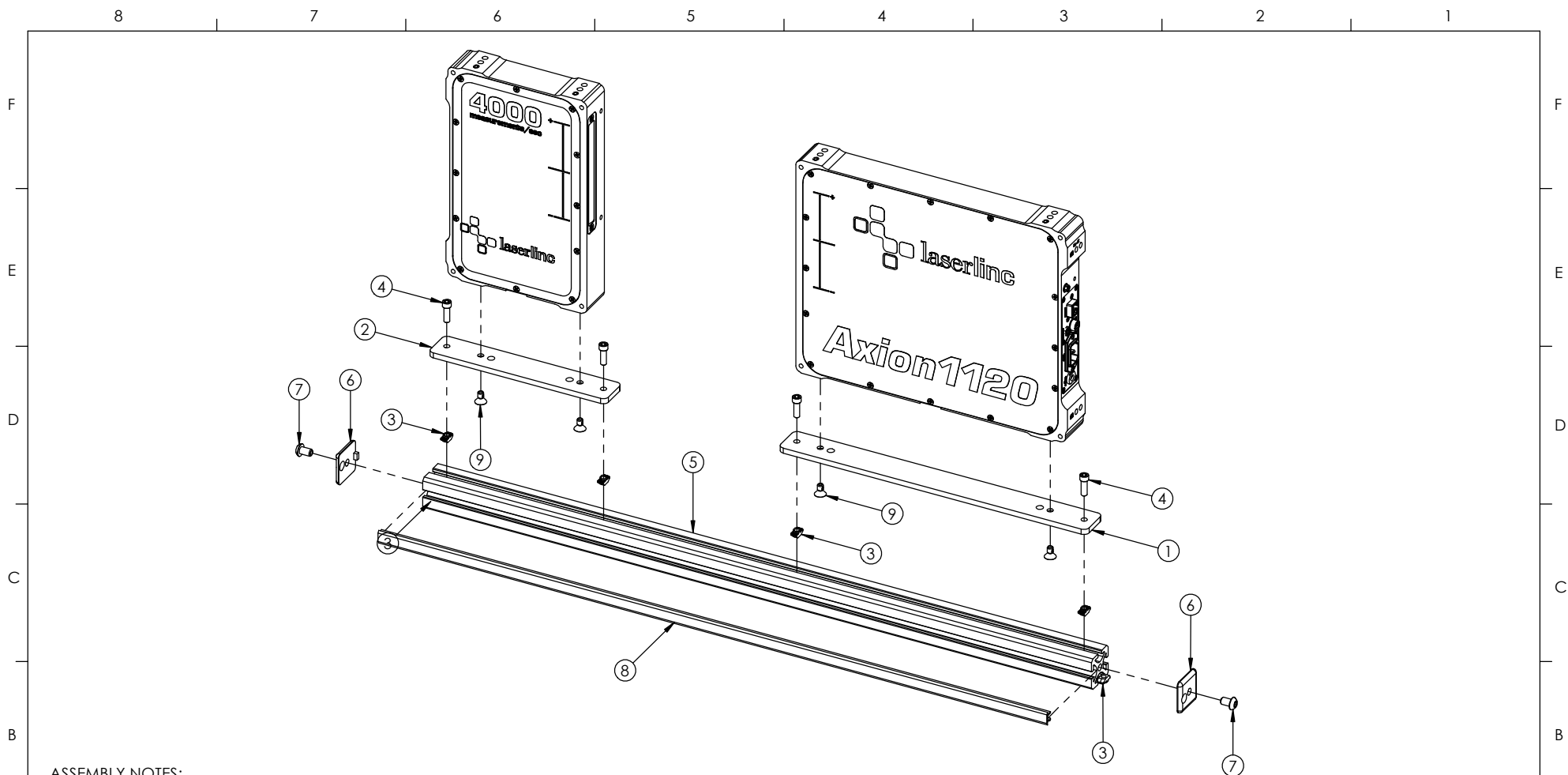
## INDEX

- (1) COVER PAGE
- (2) BOM TABLE
- (3) 1120 MICROMETER MOUNTING
- (4) 1120 MICROMETER OVERALLS

|  |  |  |  |  |      |   |
|--|--|--|--|--|------|---|
| <b>GENERAL FINISH NOTE</b>   |  | UNLESS OTHERWISE SPECIFIED:  |  | NAME   | DATE | <br><b>LASERLINC, INC.</b><br>PHONE: 937-318-2440<br>INFO@LASERLINC.COM<br>WWW.LASERLINC.COM |
| <b>DE-BURR AND BREAK ALL SHARP EDGES BEFORE FINISH AND/OR SHIPPING</b>   |  | DIMENSIONS ARE IN INCHES<br>TOLERANCES:<br>ANGLES ±.25°<br>TWO PLACE DECIMAL ±0.010<br>THREE PLACE DECIMAL ±0.005<br>FOUR PLACE DECIMAL ±0.0005<br>UNMARKED FILLETS/CHAMFER .06<br>DE-BURR ALL PARTS |  | DRAWN BY:  | MAM  |   |
| <b>PROPRIETARY AND CONFIDENTIAL</b>  |  | INTERPRET GEOMETRIC TOLERANCING PER: ASME Y14.5  |  |  |      | <b>TITLE:</b><br>AXION1120 SINGLE-AXIS LASER MICROMETER W/ RAIL MOUNT, 10.00 IN [254.0 mm] SEPARATION   |
| THE INFORMATION CONTAINED IN THIS DRAWING IS THE SOLE PROPERTY OF LASERLINC, INC. ANY REPRODUCTION IN PART OR AS A WHOLE WITHOUT THE WRITTEN PERMISSION OF LASERLINC, INC IS PROHIBITED. |  | MATERIAL   |  | .63 RA SURFACE FINISH<br>ALL FEATURES MUST MEET SPECIFICATION AFTER PLATING BEFORE POWDER-COAT IF PLATED OR POWDER-COATED<br><b>SEE FINISH</b> |      | <b>SIZE</b><br><b>B</b>   |
|  |  | FINISH   |  | DO NOT SCALE DRAWING   |      | <b>DWG. NO.</b><br>1121-0002-27   |
|  |  |  |  |  |      | <b>REV</b><br><b>C</b>  |
|  |  |  |  |  |      | <b>SCALE:</b> 1:4<br><b>SHEET</b> 1 OF 4  |


| ITEM NO. | Number          | DESCRIPTION   | Part Location | QTY. |
|----------|-----------------|---|---------------|------|
| 1        | 1121-3202-05    | Axion1120 TX Rail Adaptor                                     | 41-B          | 1    |
| 2        | 1121-3203-05    | Axion1120 RX Rail Adaptor                                     | 41-B          | 1    |
| 3        | 1121-2201-28    | 5-16 Slot 1-4 - 20 t-nut                                      | 40-D          | 6    |
| 4        | 0000-2228-04    | 1/4-20 x 3/4L SHCS SS   | 19-C          | 4    |
| 5        | 1121-3400-28-32 | Aluminum Extrusions, 1 1/2in x 1 1/2in x 32in                 |               | 1    |
| 6        | 1121-3401-28    | Split Head 1.5x1.5 Rail End Plate                             | 40-D          | 2    |
| 7        | 1121-2207-04    | 5/16-18 x 1/2L BHCS - Black Oxide                             | 40-C          | 2    |
| 8        | 1121-2208-04-32 | 5/16" T-Slot Cover - Cut to 32" Length                        | 40-A          | 1    |
| 9        | 4001-2248-04    | 1/4-20 x 1/2L FH SHCS SS - Thread Lock                        | 19-E          | 4    |
| 10       | 1120-0002-00-TX | Axion1120, Single-Axis NetLinc Split-Head Micrometer          |               | 1    |
| 11       | 0160-0100-12-53 | Axion130 / 160 / 1120 / 1240 TX-RX Interface Cable, 53in Long |               | 1    |

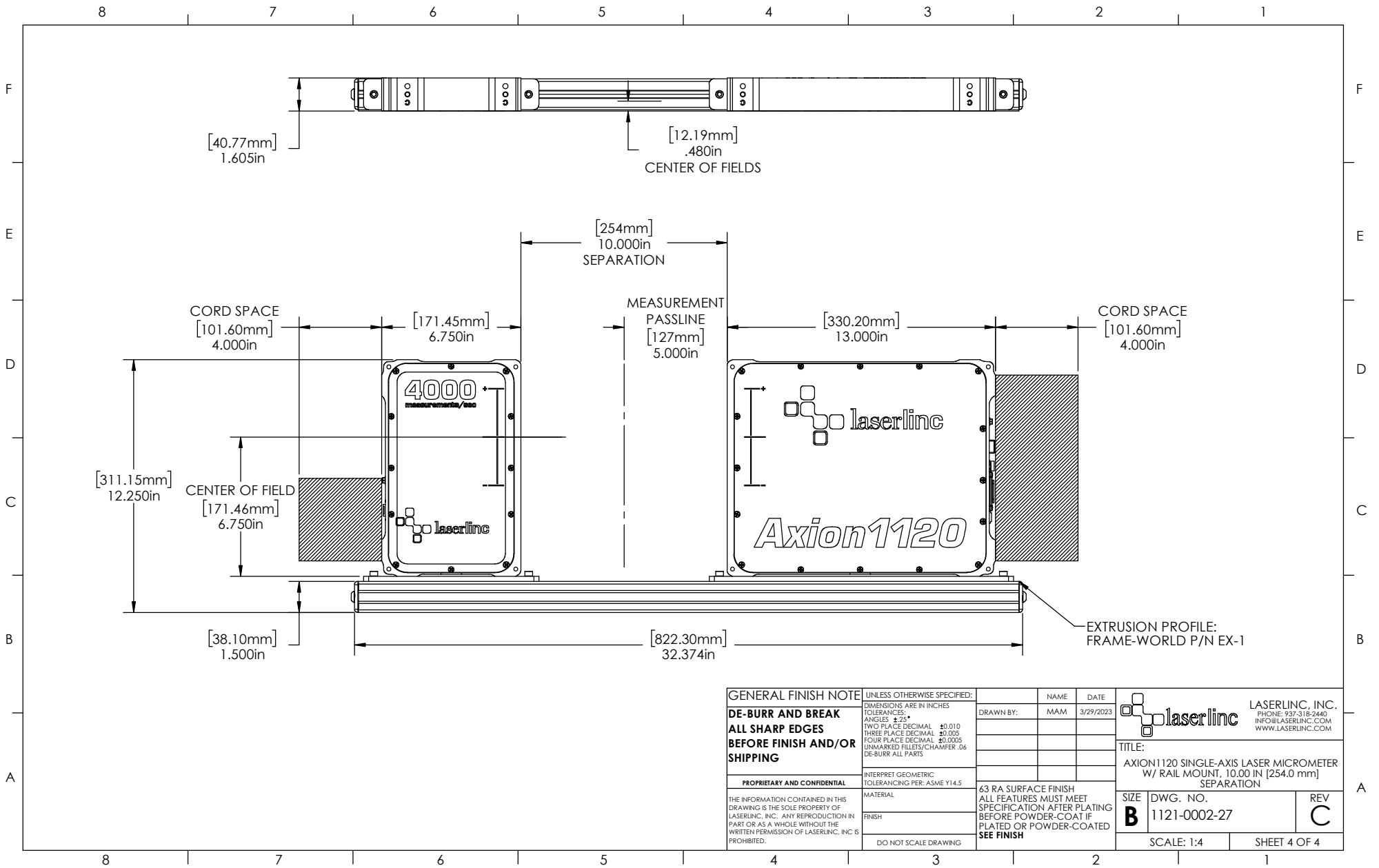
|   |   |   |   |  |   |   |  |   |
|---|---|---|---|--|---|---|--|---|
| A | B | C | <b>GENERAL FINISH NOTE</b><br><b>DE-BURR AND BREAK</b><br><b>ALL SHARP EDGES</b><br><b>BEFORE FINISH AND/OR SHIPPING</b>  |  | UNLESS OTHERWISE SPECIFIED:<br>DIMENSIONS ARE IN INCHES<br>TOLERANCES:<br>ANGLES ±.25°<br>TWO PLACE DECIMAL ±0.010<br>THREE PLACE DECIMAL ±0.005<br>FOUR PLACE DECIMAL ±0.0005<br>UNMARKED FILLETS/CHAMFER .06<br>DE-BURR ALL PARTS | DRAWN BY: MAM<br>DATE: 3/29/2023  |  <b>LASERLINC, INC.</b><br>PHONE: 937-318-2440<br>INFO@LASERLINC.COM<br>WWW.LASERLINC.COM |   |
|   |   |   | <b>PROPRIETARY AND CONFIDENTIAL</b><br>THE INFORMATION CONTAINED IN THIS DRAWING IS THE SOLE PROPERTY OF LASERLINC, INC. ANY REPRODUCTION IN PART OR AS A WHOLE WITHOUT THE WRITTEN PERMISSION OF LASERLINC, INC IS PROHIBITED. |  | INTERPRET GEOMETRIC TOLERANCING PER: ASME Y14.5   | 63 RA SURFACE FINISH<br>ALL FEATURES MUST MEET SPECIFICATION AFTER PLATING BEFORE POWDER-COAT IF PLATED OR POWDER-COATED<br><b>SEE FINISH</b> |  | <b>TITLE:</b><br>AXION1120 SINGLE-AXIS LASER MICROMETER W/ RAIL MOUNT, 10.00 IN [254.0 mm] SEPARATION |
|   |   |   | MATERIAL:<br>FINISH:<br>DO NOT SCALE DRAWING  | SIZE <b>B</b><br>DWG. NO. 1121-0002-27<br>SCALE: 1:3 | REV <b>C</b><br>SHEET 2 OF 4  |   |  |   |
|   |   |   |   |  |   |   |  |   |




ASSEMBLY NOTES:

1. THREAD ITEM (4) THROUGH BOTH ITEM (2) & (1), AND BEGIN THREADING INTO ITEM (3).
2. THREAD ITEM (9) INTO MICROMETER THROUGH BOTH ITEM (2) & (1).
3. SLIDE ITEM (3) OF THE SUBASSEMBLY INTO THE RAIL SLOT ON ITEM (5). THEN TIGHTEN ITEM (4) WITH 5/32" HEX KEY TOOL.
4. SLIDE 2 ITEM (3)'S INTO THE BOTTOM RAIL SLOT OF ITEM (5).
5. ATTACH ITEM (6) TO ITEM (5) WITH ITEM (7). TIGHTEN USING 3/16" HEX KEY TOOL.
6. SNAP ITEM (8) INTO ITEM (5).

|  |   |   |   |
|--|---|---|---|
| <b>GENERAL FINISH NOTE</b><br>DE-BURR AND BREAK<br>ALL SHARP EDGES<br>BEFORE FINISH AND/OR SHIPPING  | UNLESS OTHERWISE SPECIFIED:<br>DIMENSIONS ARE IN INCHES<br>TOLERANCES:<br>ANGLES ±.25°<br>TWO PLACE DECIMAL ±0.010<br>THREE PLACE DECIMAL ±0.005<br>FOUR PLACE DECIMAL ±0.0005<br>UNMARKED RILLETS/CHAMFER .06<br>DE-BURR ALL PARTS | NAME<br>DATE  |  LASERLINE, INC.<br>PHONE: 937-518-2440<br>INFO@LASERLINE.COM<br>WWW.LASERLINE.COM |
|  | PROPRIETARY AND CONFIDENTIAL<br>INTERPRET GEOMETRIC TOLERANCING PER: ASME Y14.5<br>MATERIAL<br>FINISH<br>DO NOT SCALE DRAWING   | DRAWN BY: MAM<br>3/29/2023  |   |
| THE INFORMATION CONTAINED IN THIS DRAWING IS THE SOLE PROPERTY OF LASERLINE, INC. ANY REPRODUCTION IN PART OR AS A WHOLE WITHOUT THE WRITTEN PERMISSION OF LASERLINE, INC IS PROHIBITED. |   | 63 RA SURFACE FINISH<br>ALL FEATURES MUST MEET SPECIFICATION AFTER PLATING BEFORE POWDER-COAT IF PLATED OR POWDER-COATED<br><b>SEE FINISH</b> | SIZE <b>B</b> DWG. NO. 1121-0002-27 REV <b>C</b>  |
|  |   | SCALE: 1:3  | SHEET 3 OF 4  |



|   |   |  |   |                 |
|---|---|--|---|-----------------|
| <b>GENERAL FINISH NOTE</b><br><b>DE-BURR AND BREAK</b><br><b>ALL SHARP EDGES</b><br><b>BEFORE FINISH AND/OR SHIPPING</b>  | UNLESS OTHERWISE SPECIFIED:<br>DIMENSIONS ARE IN INCHES<br>TOLERANCES:<br>ANGLES ±.25°<br>TWO PLACE DECIMAL ±0.010<br>THREE PLACE DECIMAL ±0.005<br>FOUR PLACE DECIMAL ±0.0005<br>UNMARKED FILLETS/CHAMFER .06<br>DE-BURR ALL PARTS | NAME<br>DATE   |  LASERLINC, INC.<br>PHONE: 937-518-2440<br>INFO@LASERLINC.COM<br>WWW.LASERLINC.COM |                 |
|   | INTERPRET GEOMETRIC TOLERANCING PER: ASME Y14.5   | DRAWN BY: MAM<br>3/29/2023   | TITLE:<br>AXION 1120 SINGLE-AXIS LASER MICROMETER<br>W/ RAIL MOUNT, 10.00 IN [254.0 mm]<br>SEPARATION   |                 |
| <b>PROPRIETARY AND CONFIDENTIAL</b><br>THE INFORMATION CONTAINED IN THIS DRAWING IS THE SOLE PROPERTY OF LASERLINC, INC. ANY REPRODUCTION IN PART OR AS A WHOLE WITHOUT THE WRITTEN PERMISSION OF LASERLINC, INC IS PROHIBITED. | MATERIAL<br>FINISH<br>DO NOT SCALE DRAWING  | .63 RA SURFACE FINISH<br>ALL FEATURES MUST MEET SPECIFICATION AFTER PLATING BEFORE POWDER-COAT IF PLATED OR POWDER-COATED<br><b>SEE FINISH</b> |   |                 |
|   |   | SIZE<br><b>B</b>   | DWG. NO.<br>1121-0002-27  | REV<br><b>C</b> |
|   |   | SCALE: 1:4   |   | SHEET 4 OF 4    |