


REVISIONS				
ZONE	REV.	DESCRIPTION	DATE	APPROVED
	A	CHECK-IN	6/22/2023	CJM
	B	ADDING MICROMETER AND CABLE TO ASSEMBLY	8/20/2024	NGN


AXION 1120 SINGLE-AXIS LASER MICROMETER W/ RAIL MOUNT, 15.00 IN [381.0 mm] SEPARATION

INDEX

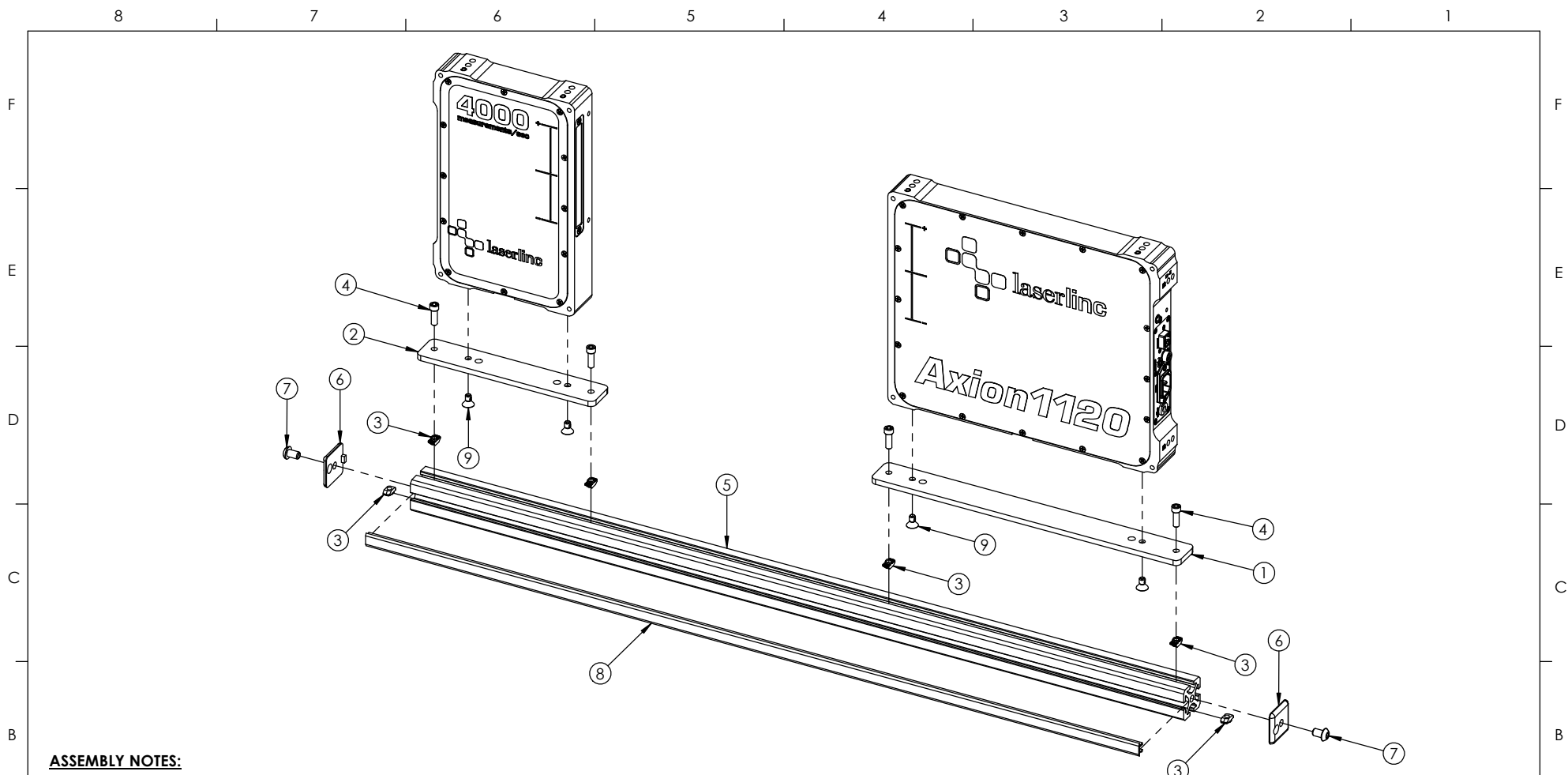
- (1) COVER PAGE
- (2) BOM TABLE
- (3) 1120 MICROMETER MOUNTING
- (4) 1120 MICROMETER OVERALLS

GENERAL FINISH NOTE		UNLESS OTHERWISE SPECIFIED:		NAME	DATE
DE-BURR AND BREAK ALL SHARP EDGES BEFORE FINISH AND/OR SHIPPING		DIMENSIONS ARE IN INCHES TOLERANCES: ANGLES ±.25° TWO PLACE DECIMAL ±0.010 THREE PLACE DECIMAL ±0.005 FOUR PLACE DECIMAL ±0.0005 UNMARKED RILLETS/CHAMFER .06 DE-BURR ALL PARTS		DRAWN BY:	CJM 6/22/2023
PROPRIETARY AND CONFIDENTIAL		INTERPRET GEOMETRIC TOLERANCING PER: ASME Y14.5			
THE INFORMATION CONTAINED IN THIS DRAWING IS THE SOLE PROPERTY OF LASERLINC, INC. ANY REPRODUCTION IN PART OR AS A WHOLE WITHOUT THE WRITTEN PERMISSION OF LASERLINC, INC IS PROHIBITED.		MATERIAL		.63 RA SURFACE FINISH ALL FEATURES MUST MEET SPECIFICATION AFTER PLATING BEFORE POWDER-COAT IF PLATED OR POWDER-COATED SEE FINISH	
		FINISH		DO NOT SCALE DRAWING	
				 LASERLINC, INC. PHONE: 937-318-2440 INFO@LASERLINC.COM WWW.LASERLINC.COM	
		TITLE:		AXION 1120 SINGLE-AXIS LASER MICROMETER W/ RAIL MOUNT, 15.00 IN [381.0 mm] SEPARATION	
		SIZE	DWG. NO.	REV	
		B	1121-0005-27	B	
		SCALE: 1:4		SHEET 1 OF 4	

ITEM NO.	Number	DESCRIPTION	Part Location	QTY.
1	1121-3202-05	Axion1120 TX Rail Adaptor	41-B	1
2	1121-3203-05	Axion1120 RX Rail Adaptor	41-B	1
3	1121-2201-28	5-16 Slot 1-4 - 20 1-nut	40-D	6
4	0000-2228-04	1/4-20 x 3/4L SHCS SS	19-C	4
5	1121-3400-28-37	Aluminum Extrusions, 1 1/2in x 1 1/2in x 37in		1
6	1121-3401-28	Split Head 1.5x1.5 Rail End Plate	40-D	2
7	1121-2207-04	5/16-18 x 1/2L BHCS - Black Oxide	40-C	2
8	1121-2208-04-37	5/16" T-Slot Cover - Cut to 37" Length	40-A	1
9	4001-2248-04	1/4-20 x 1/2L FH SHCS SS - Thread Lock	19-E	4
10	1120-0002-00-TX	Axion1120, Single-Axis NetLinc Split-Head Micrometer		1
11	0160-0100-12-60	Axion130 / 160 / 1120 / 1240 TX-RX Interface Cable, 60in Long		1


A	B	C	GENERAL FINISH NOTE		UNLESS OTHERWISE SPECIFIED:		NAME	DATE	 LASERLINE, INC. PHONE: 937-318-2440 INFO@LASERLINE.COM WWW.LASERLINE.COM	
			DE-BURR AND BREAK		DIMENSIONS ARE IN INCHES		DRAWN BY:	CJM		6/22/2023
			ALL SHARP EDGES		TOLERANCES:					
			BEFORE FINISH AND/OR SHIPPING		ANGLES ±.25° TWO PLACE DECIMAL ±0.010 THREE PLACE DECIMAL ±0.005 FOUR PLACE DECIMAL ±0.0005 UNMARKED RILLETS/CHAMFER .06 DE-BURR ALL PARTS					
PROPRIETARY AND CONFIDENTIAL		INTERPRET GEOMETRIC TOLERANCING PER: ASME Y14.5		.63 RA SURFACE FINISH		ALL FEATURES MUST MEET SPECIFICATION AFTER PLATING BEFORE POWDER-COAT IF PLATED OR POWDER-COATED		TITLE:		
THE INFORMATION CONTAINED IN THIS DRAWING IS THE SOLE PROPERTY OF LASERLINE, INC. ANY REPRODUCTION IN PART OR AS A WHOLE WITHOUT THE WRITTEN PERMISSION OF LASERLINE, INC IS PROHIBITED.		MATERIAL		FINISH		DO NOT SCALE DRAWING		AXION1120 SINGLE-AXIS LASER MICROMETER W/ RAIL MOUNT, 15.00 IN [381.0 mm] SEPARATION		
								SIZE B		
								DWG. NO. 1121-0005-27		
								REV B		
								SCALE: 1:3		
								SHEET 2 OF 4		

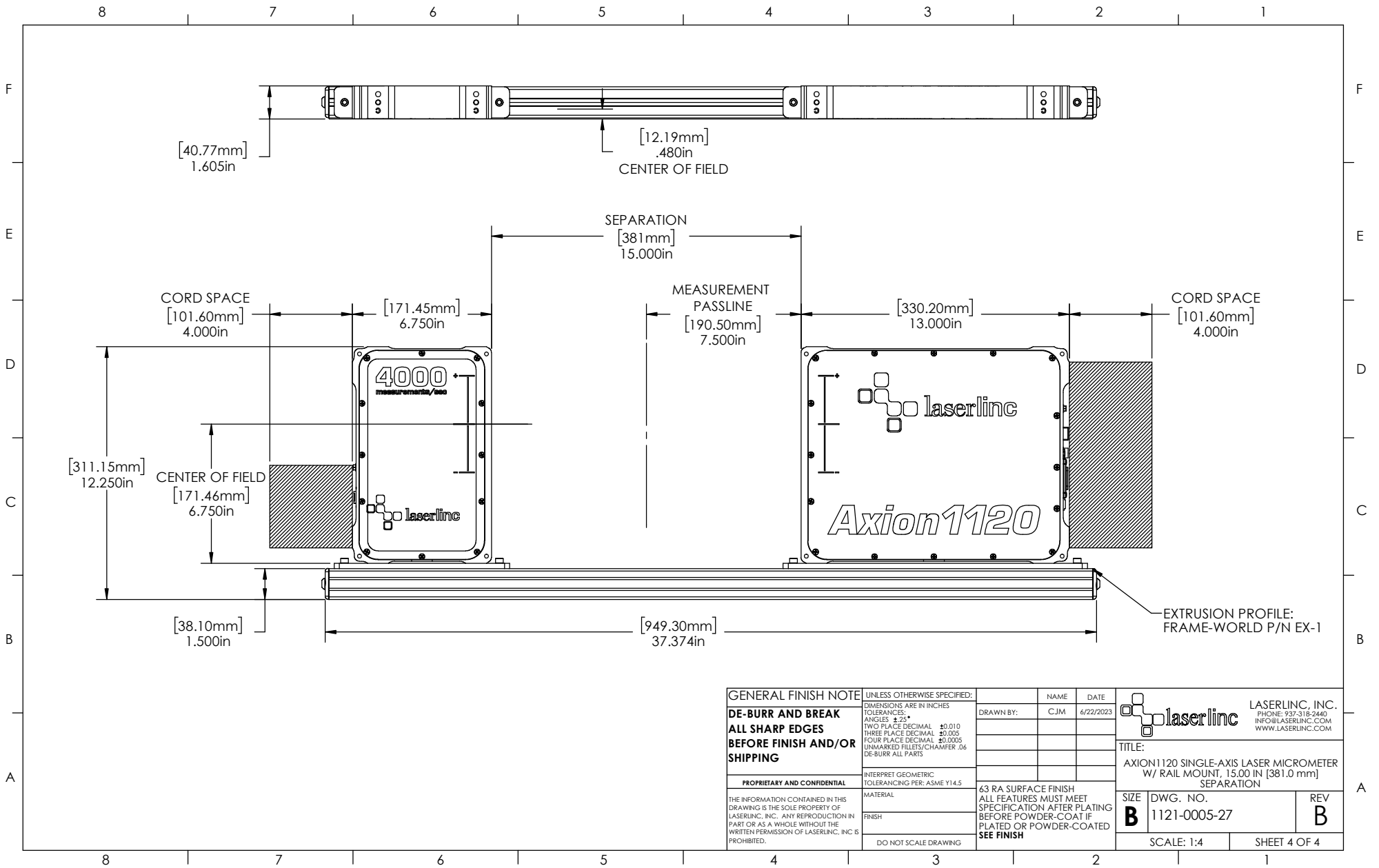
8 | 7 | 6 | 5 | 4 | 3 | 2 | 1



ASSEMBLY NOTES:

1. THREAD ITEM ④ THROUGH BOTH ITEM ② & ①, AND BEGIN THREADING INTO ITEM ③.
2. THREAD ITEM ⑨ INTO MICROMETER THROUGH BOTH ITEM ② & ①.
3. SLIDE ITEM ③ OF THE SUBASSEMBLY INTO THE RAIL SLOT ON ITEM ⑤. THEN TIGHTEN ITEM ④ WITH 5/32" HEX KEY TOOL.
4. SLIDE 2 ITEM ③'S INTO THE BOTTOM RAIL SLOT OF ITEM ⑤.
5. ATTACH ITEM ⑥ TO ITEM ⑤ WITH ITEM ⑦. TIGHTEN USING 3/16" HEX KEY TOOL.
6. SNAP ITEM ⑧ INTO ITEM ⑤.

GENERAL FINISH NOTE DE-BURR AND BREAK ALL SHARP EDGES BEFORE FINISH AND/OR SHIPPING	UNLESS OTHERWISE SPECIFIED: DIMENSIONS ARE IN INCHES TOLERANCES ANGLES ±.25° TWO PLACE DECIMAL ±0.010 THREE PLACE DECIMAL ±0.005 FOUR PLACE DECIMAL ±0.0005 UNMARKED FILLETS/CHAMFER .06 DE-BURR ALL PARTS	NAME C.J.M. DATE 6/22/2023	 LASERLINC, INC. PHONE: 937-518-2440 INFO@LASERLINC.COM WWW.LASERLINC.COM	
	PROPRIETARY AND CONFIDENTIAL THE INFORMATION CONTAINED IN THIS DRAWING IS THE SOLE PROPERTY OF LASERLINC, INC. ANY REPRODUCTION IN PART OR AS A WHOLE WITHOUT THE WRITTEN PERMISSION OF LASERLINC, INC IS PROHIBITED.	INTERPRET GEOMETRIC TOLERANCING PER: ASME Y14.5 MATERIAL FINISH DO NOT SCALE DRAWING		63 RA SURFACE FINISH ALL FEATURES MUST MEET SPECIFICATION AFTER PLATING BEFORE POWDER-COAT IF PLATED OR POWDER-COATED SEE FINISH
		SIZE B	DWG. NO. 1121-0005-27	REV B
		SCALE: 1:3		SHEET 3 OF 4



GENERAL FINISH NOTE DE-BURR AND BREAK ALL SHARP EDGES BEFORE FINISH AND/OR SHIPPING	UNLESS OTHERWISE SPECIFIED: DIMENSIONS ARE IN INCHES TOLERANCES: ANGLES ±.25° TWO PLACE DECIMAL ±0.010 THREE PLACE DECIMAL ±0.005 FOUR PLACE DECIMAL ±0.0005 UNMARKED FILLETS/CHAMFER .06 DE-BURR ALL PARTS	NAME C.JM	DATE 6/22/2023		LASERLINC, INC. PHONE: 937-318-2440 INFO@LASERLINC.COM WWW.LASERLINC.COM		
	PROPRIETARY AND CONFIDENTIAL THE INFORMATION CONTAINED IN THIS DRAWING IS THE SOLE PROPERTY OF LASERLINC, INC. ANY REPRODUCTION IN PART OR AS A WHOLE WITHOUT THE WRITTEN PERMISSION OF LASERLINC, INC IS PROHIBITED.	INTERPRET GEOMETRIC TOLERANCING PER: ASME Y14.5	TITLE: AXION 1120 SINGLE-AXIS LASER MICROMETER W/ RAIL MOUNT, 15.00 IN [381.0 mm] SEPARATION				
	FINISH DO NOT SCALE DRAWING	MATERIAL .63 RA SURFACE FINISH ALL FEATURES MUST MEET SPECIFICATION AFTER PLATING BEFORE POWDER-COAT IF PLATED OR POWDER-COATED SEE FINISH	SIZE B			DWG. NO. 1121-0005-27	REV B
			SCALE: 1:4			SHEET 4 OF 4	