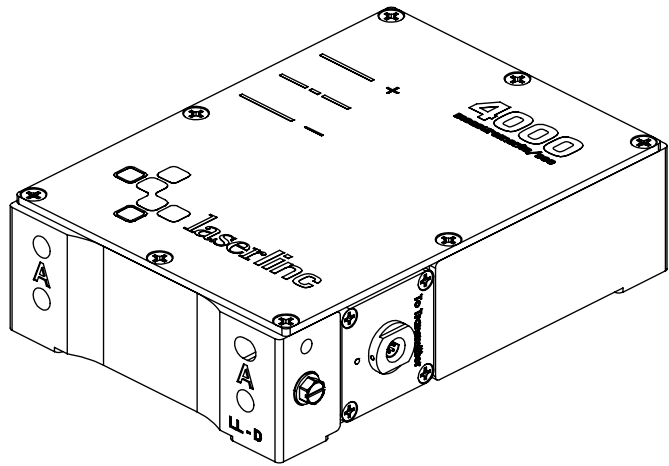
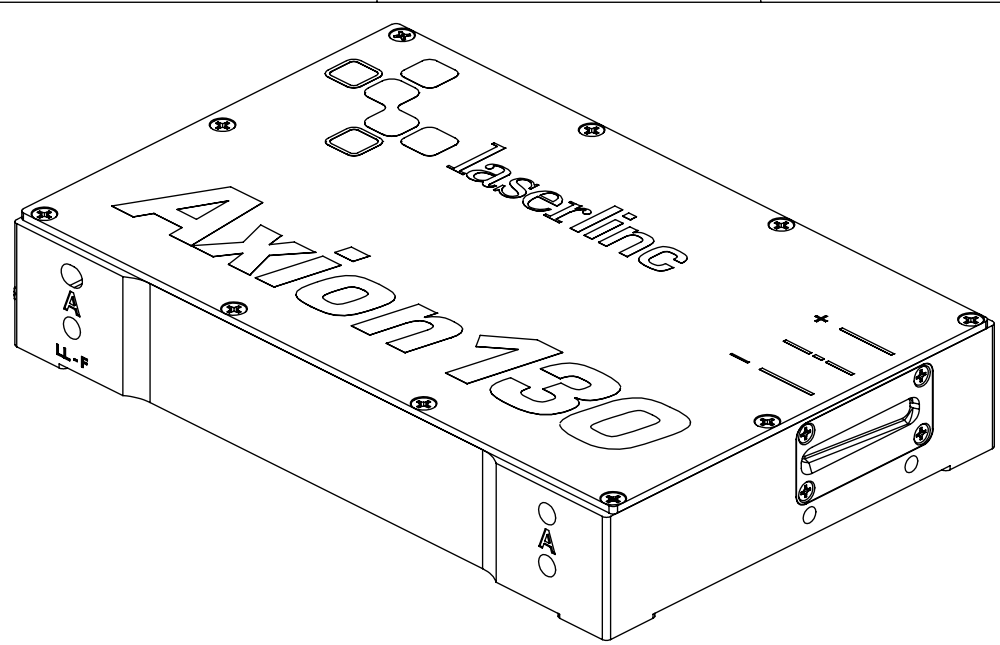


F  
E  
D  
C  
B  
A

8 7 6 5 4 3 2 1



REVISIONS				
ZONE	REV.	DESCRIPTION	DATE	APPROVED
	A	CHECK-IN	11/8/2013	MAM


# 0130-0002-00 AXION130, SINGLE-AXIS NETLINC SPLIT-HEAD MICROMETER OVERALL AND MOUNTING DIMENSIONS

**NOTES:**

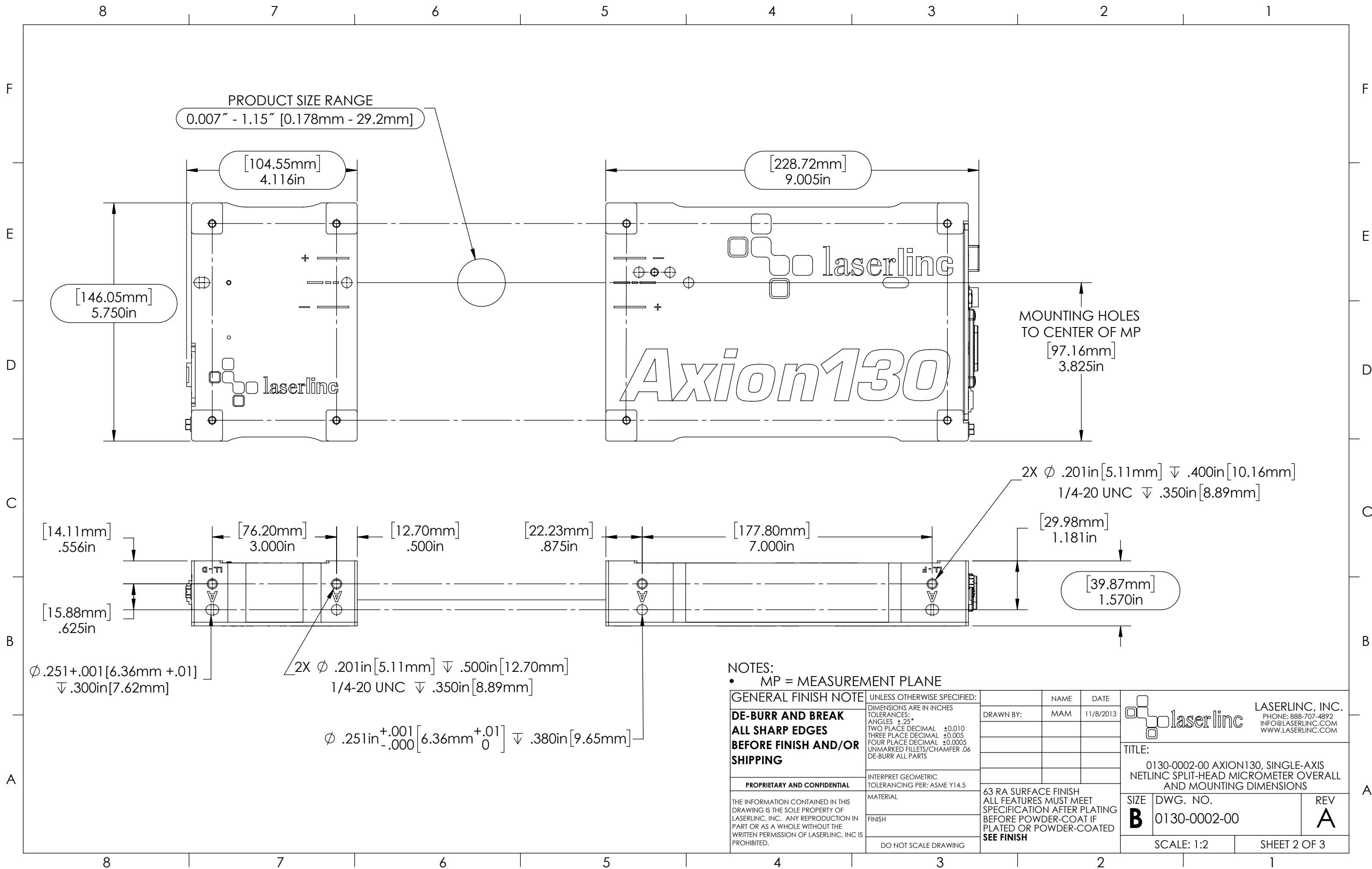
- APPROX. WEIGHT: 7 LBS [3.17 KG]
- POWER REQUIREMENTS: 100-240 VAC 50/60 Hz 50 W MAX.
- MEASUREMENTS PER SECOND (Hz): 1600, 4000 (OPTIONAL)
- RESOLUTION: .000001" [.025µm]
- REPEATABILITY<sup>2</sup> UN-AVERAGED: ±.0004" [±10µM]
- REPEATABILITY<sup>2</sup> TWO SECOND: ±.00001" [±.25µm]

**INDEX**

- (1) COVER PAGE
- (2) DIMENSIONS
- (3) DIMENSIONS 2

<b>GENERAL FINISH NOTE</b>		UNLESS OTHERWISE SPECIFIED:		NAME	DATE	 <b>LASERLINC, INC.</b> PHONE: 888-707-4892 INFO@LASERLINC.COM WWW.LASERLINC.COM
<b>DE-BURR AND BREAK ALL SHARP EDGES BEFORE FINISH AND/OR SHIPPING</b>		DIMENSIONS ARE IN INCHES TOLERANCES: ANGLES ±.25° TWO PLACE DECIMAL ±0.010 THREE PLACE DECIMAL ±0.005 FOUR PLACE DECIMAL ±0.0005 UNMARKED FILLETS/CHAMFER .06 DE-BURR ALL PARTS		DRAWN BY:	MAM	
<b>PROPRIETARY AND CONFIDENTIAL</b>		INTERPRET GEOMETRIC TOLERANCING PER: ASME Y14.5				<b>TITLE:</b> 0130-0002-00 AXION130, SINGLE-AXIS NETLINC SPLIT-HEAD MICROMETER OVERALL AND MOUNTING DIMENSIONS
THE INFORMATION CONTAINED IN THIS DRAWING IS THE SOLE PROPERTY OF LASERLINC, INC. ANY REPRODUCTION IN PART OR AS A WHOLE WITHOUT THE WRITTEN PERMISSION OF LASERLINC, INC. IS PROHIBITED.		MATERIAL		63 RA SURFACE FINISH ALL FEATURES MUST MEET SPECIFICATION AFTER PLATING BEFORE POWDER-COAT IF PLATED OR POWDER-COATED <b>SEE FINISH</b>		<b>SIZE</b> <b>B</b>
		FINISH				<b>DWG. NO.</b> 0130-0002-00
		DO NOT SCALE DRAWING				<b>REV</b> <b>A</b>
				SCALE: 1:2		SHEET 1 OF 3

8 7 6 5 4 3 2 1



PRODUCT SIZE RANGE  
0.007" - 1.15" [0.178mm - 29.2mm]

[104.55mm]  
4.116in

[228.72mm]  
9.005in

[146.05mm]  
5.750in

MOUNTING HOLES  
TO CENTER OF MP  
[97.16mm]  
3.825in

[14.11mm]  
.556in

[76.20mm]  
3.000in

[12.70mm]  
.500in

[22.23mm]  
.875in

[177.80mm]  
7.000in

2X  $\phi$  .201in [5.11mm]  $\nabla$  .400in [10.16mm]  
1/4-20 UNC  $\nabla$  .350in [8.89mm]

[29.98mm]  
1.181in


[39.87mm]  
1.570in

[15.88mm]  
.625in

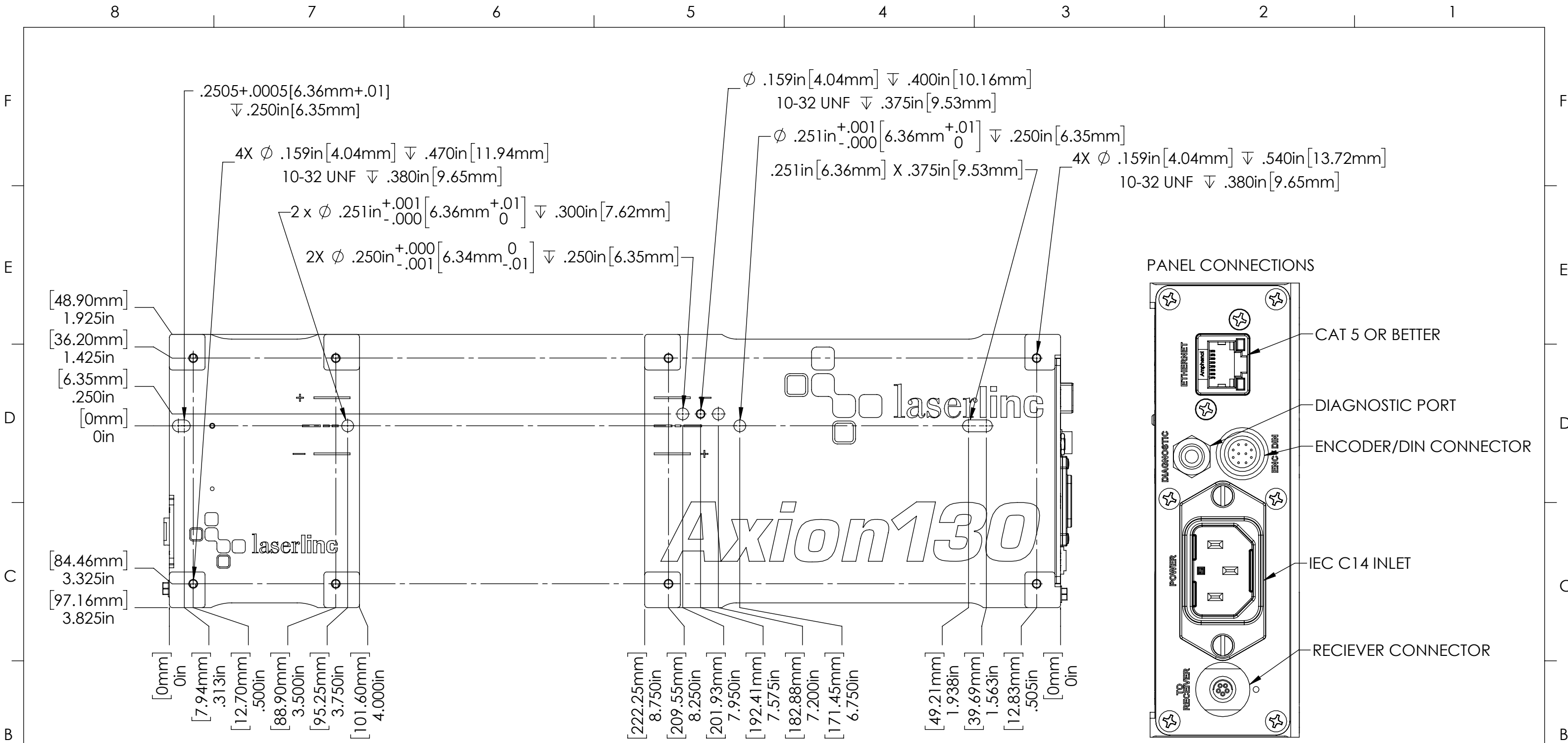
2X  $\phi$  .201in [5.11mm]  $\nabla$  .500in [12.70mm]  
1/4-20 UNC  $\nabla$  .350in [8.89mm]

$\phi$  .251in  $^{+.001}_{-.000}$  [6.36mm  $^{+.01}_0$ ]  $\nabla$  .380in [9.65mm]

NOTES:  
• MP = MEASUREMENT PLANE

<b>GENERAL FINISH NOTE</b> <b>DE-BURR AND BREAK</b> <b>ALL SHARP EDGES</b> <b>BEFORE FINISH AND/OR SHIPPING</b>	UNLESS OTHERWISE SPECIFIED: DIMENSIONS ARE IN INCHES TOLERANCES: ANGLES $\pm$ .25 TWO PLACE DECIMAL $\pm$ 0.010 THREE PLACE DECIMAL $\pm$ 0.005 FOUR PLACE DECIMAL $\pm$ 0.0005 UNMARKED FILLETS/CHAMFER .06 DE-BURR ALL PARTS	NAME	DATE	 <b>LASERLINC, INC.</b> PHONE: 888-707-4892 INFO@LASERLINC.COM WWW.LASERLINC.COM		
	<b>PROPRIETARY AND CONFIDENTIAL</b> THE INFORMATION CONTAINED IN THIS DRAWING IS THE SOLE PROPERTY OF LASERLINC, INC. ANY REPRODUCTION IN PART OR AS A WHOLE WITHOUT THE WRITTEN PERMISSION OF LASERLINC, INC. IS PROHIBITED.	INTERPRET GEOMETRIC TOLERANCING PER: ASME Y14.5 MATERIAL FINISH DO NOT SCALE DRAWING	DRAWN BY:		MAM	11/8/2013
TITLE: 0130-0002-00 AXION130, SINGLE-AXIS NETLINC SPLIT-HEAD MICROMETER OVERALL AND MOUNTING DIMENSIONS				SIZE <b>B</b>	DWG. NO. 0130-0002-00	REV <b>A</b>
SCALE: 1:2			SHEET 2 OF 3			

63 RA SURFACE FINISH  
ALL FEATURES MUST MEET SPECIFICATION AFTER PLATING BEFORE POWDER-COAT IF PLATED OR POWDER-COATED  
**SEE FINISH**



NOTES:  
 • MP = MEASUREMENT PLANE

<b>GENERAL FINISH NOTE</b> <b>DE-BURR AND BREAK</b> <b>ALL SHARP EDGES</b> <b>BEFORE FINISH AND/OR SHIPPING</b>	UNLESS OTHERWISE SPECIFIED: DIMENSIONS ARE IN INCHES TOLERANCES: ANGLES $\pm .25$ TWO PLACE DECIMAL $\pm 0.010$ THREE PLACE DECIMAL $\pm 0.005$ FOUR PLACE DECIMAL $\pm 0.0005$ UNMARKED FILLETS/CHAMFER .06 DE-BURR ALL PARTS	NAME DATE DRAWN BY: MAM 11/8/2013	LASERLINC, INC. PHONE: 888-707-4892 INFO@LASERLINC.COM WWW.LASERLINC.COM
	PROPRIETARY AND CONFIDENTIAL THE INFORMATION CONTAINED IN THIS DRAWING IS THE SOLE PROPERTY OF LASERLINC, INC. ANY REPRODUCTION IN PART OR AS A WHOLE WITHOUT THE WRITTEN PERMISSION OF LASERLINC, INC. IS PROHIBITED.	INTERPRET GEOMETRIC TOLERANCING PER: ASME Y14.5 MATERIAL FINISH DO NOT SCALE DRAWING	
		63 RA SURFACE FINISH ALL FEATURES MUST MEET SPECIFICATION AFTER PLATING BEFORE POWDER-COAT IF PLATED OR POWDER-COATED <b>SEE FINISH</b>	SIZE <b>B</b> DWG. NO. 0130-0002-00 REV <b>A</b>
		SCALE: 1:2	SHEET 3 OF 3