


REVISIONS				
ZONE	REV.	DESCRIPTION	DATE	APPROVED
	A	CHECK-IN	2/23/2011	MAM

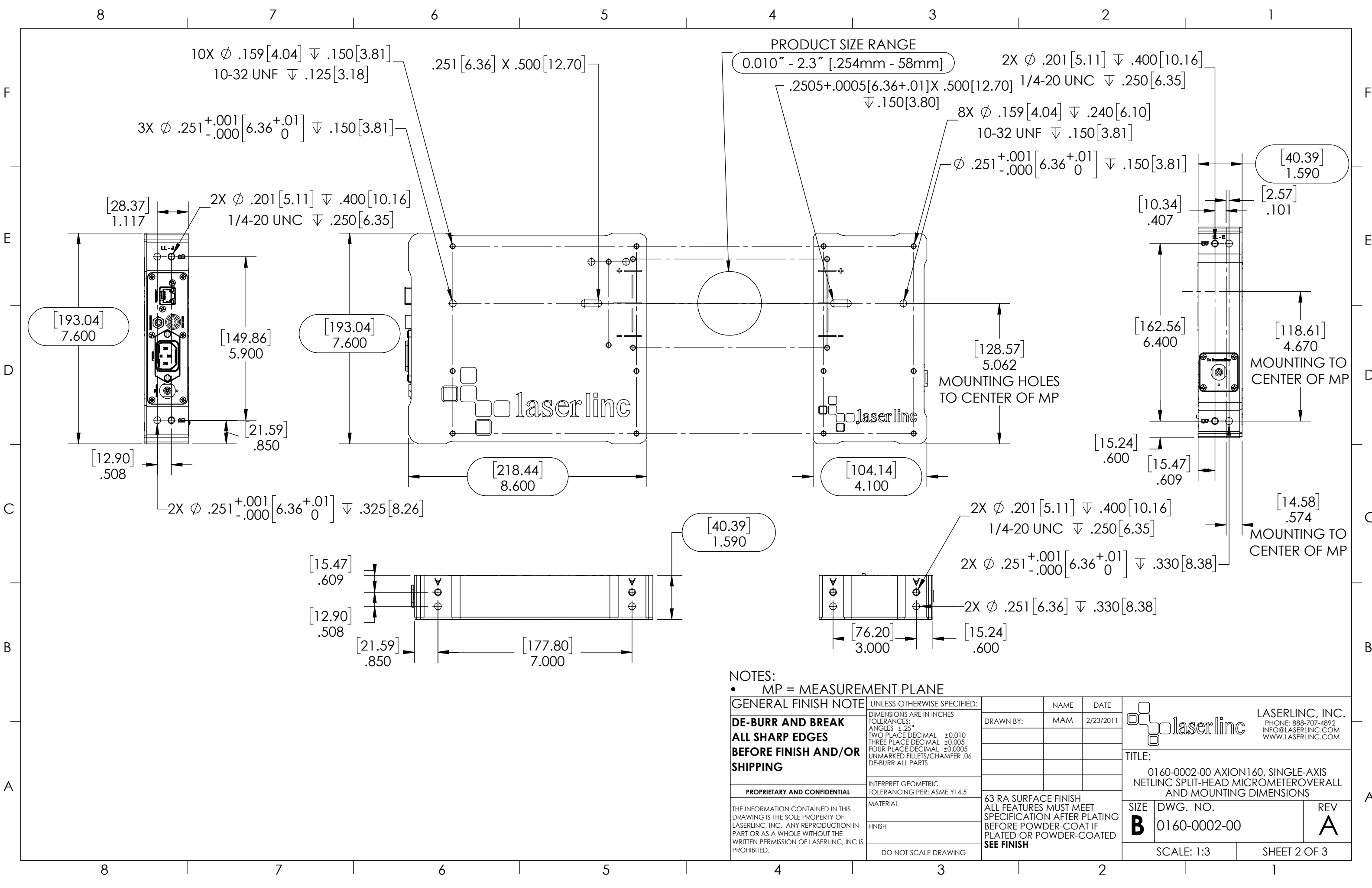
0160-0002-00 Axion 160, Single-Axis NetLinc Split-Head Micrometer Overall and Mounting Dimensions

- NOTES:**
- APPROX. WEIGHT: 9 LBS [4.08 KG]
 - POWER REQUIREMENTS: 100-240 VAC 50/60 Hz 50 W MAX.
 - MEASUREMENTS PER SECOND (Hz): 1600, 4000 (OPTIONAL)
 - RESOLUTION: .000001" [.025µm]
 - REPEATABILITY² UNAVERAGED: ±.0010" [±25µm]
 - REPEATABILITY² TWO SECOND: ±.00002" [±.5µm]

INDEX

- (1) COVER PAGE
- (2) DIMENSIONS
- (3) DIMENSIONS 2

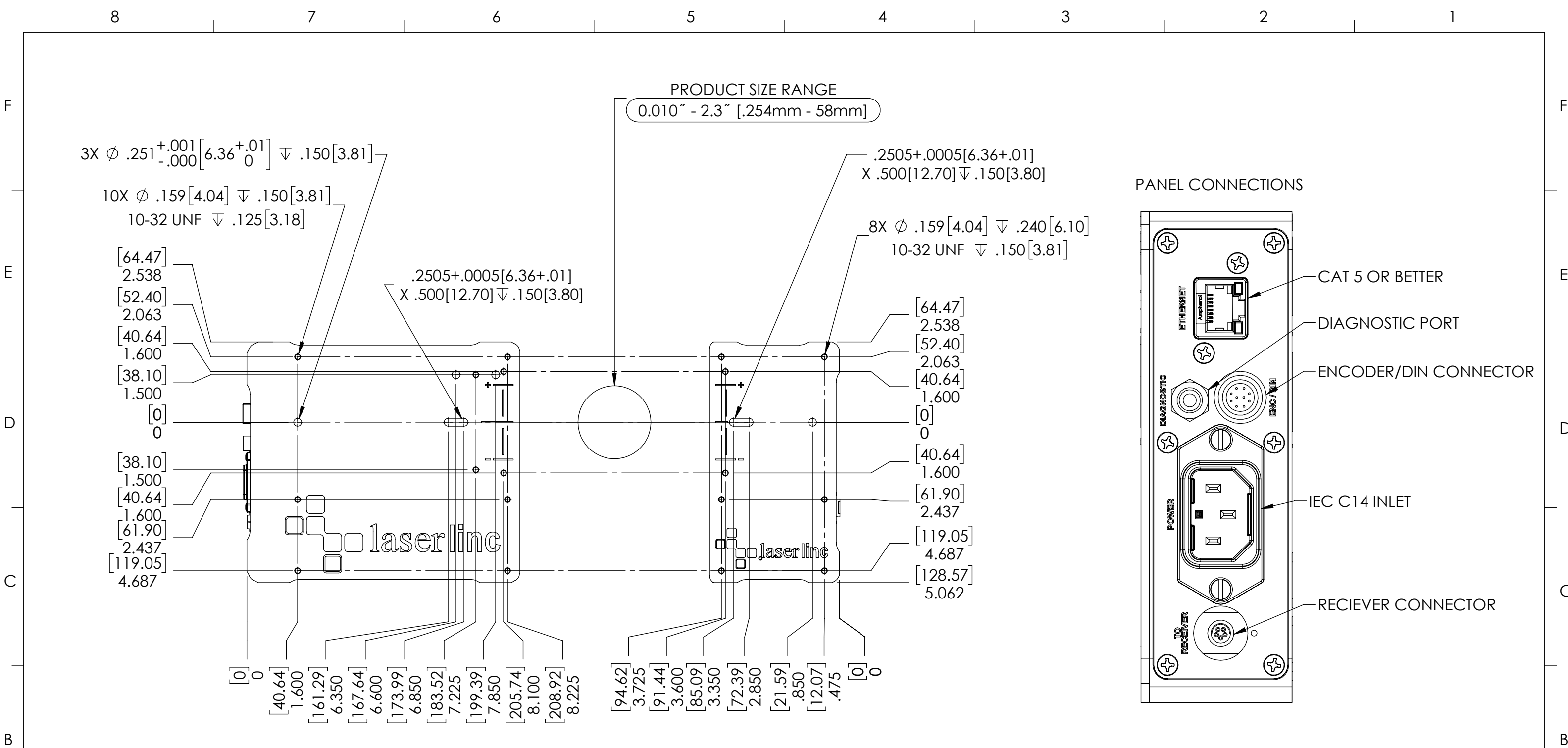
GENERAL FINISH NOTE		UNLESS OTHERWISE SPECIFIED:		NAME	DATE
DE-BURR AND BREAK ALL SHARP EDGES BEFORE FINISH AND/OR SHIPPING		DIMENSIONS ARE IN INCHES TOLERANCES: ANGLES ±.25° TWO PLACE DECIMAL ±0.010 THREE PLACE DECIMAL ±0.005 FOUR PLACE DECIMAL ±0.0005 UNMARKED FILLETS/CHAMFER .06 DE-BURR ALL PARTS		DRAWN BY:	MAM 2/23/2011
PROPRIETARY AND CONFIDENTIAL		INTERPRET GEOMETRIC TOLERANCING PER: ASME Y14.5			
THE INFORMATION CONTAINED IN THIS DRAWING IS THE SOLE PROPERTY OF LASERLINC, INC. ANY REPRODUCTION IN PART OR AS A WHOLE WITHOUT THE WRITTEN PERMISSION OF LASERLINC, INC IS PROHIBITED.		MATERIAL		63 RA SURFACE FINISH ALL FEATURES MUST MEET SPECIFICATION AFTER PLATING BEFORE POWDER-COAT IF PLATED OR POWDER-COATED SEE FINISH	
		FINISH			
		DO NOT SCALE DRAWING			
				LASERLINC, INC. PHONE: 888-707-4892 INFO@LASERLINC.COM WWW.LASERLINC.COM	
TITLE: 0160-0002-00 AXION 160, SINGLE-AXIS NETLINC SPLIT-HEAD MICROMETER OVERALL AND MOUNTING DIMENSIONS					
SIZE	DWG. NO.			REV	
B	0160-0002-00			A	
SCALE: 1:2				SHEET 1 OF 3	



NOTES:
 • MP = MEASUREMENT PLANE

GENERAL FINISH NOTE		UNLESS OTHERWISE SPECIFIED:		NAME	DATE
DE-BURR AND BREAK ALL SHARP EDGES BEFORE FINISH AND/OR SHIPPING		DIMENSIONS ARE IN INCHES TOLERANCES: ANGLES ±.25 TWO PLACE DECIMAL ±0.010 THREE PLACE DECIMAL ±0.005 FOUR PLACE DECIMAL ±0.0005 UNMARKED FILLETS/CHAMFER .06 DE-BURR ALL PARTS		DRAWN BY:	MAM 2/23/2011
PROPRIETARY AND CONFIDENTIAL		INTERPRET GEOMETRIC TOLERANCING PER: ASME Y14.5			
THE INFORMATION CONTAINED IN THIS DRAWING IS THE SOLE PROPERTY OF LASERLINC, INC. ANY REPRODUCTION IN PART OR AS A WHOLE WITHOUT THE WRITTEN PERMISSION OF LASERLINC, INC IS PROHIBITED.		MATERIAL		63 RA SURFACE FINISH ALL FEATURES MUST MEET SPECIFICATION AFTER PLATING BEFORE POWDER-COAT IF PLATED OR POWDER-COATED SEE FINISH	
		FINISH		TITLE: 0160-0002-00 AXION160, SINGLE-AXIS NETLINC SPLIT-HEAD MICROMETER OVERALL AND MOUNTING DIMENSIONS	
		DO NOT SCALE DRAWING		SIZE B	DWG. NO. 0160-0002-00
				REV A	
				SCALE: 1:3 SHEET 2 OF 3	





NOTES:

- MP = MEASUREMENT PLANE

GENERAL FINISH NOTE		UNLESS OTHERWISE SPECIFIED:		NAME	DATE
DE-BURR AND BREAK ALL SHARP EDGES BEFORE FINISH AND/OR SHIPPING		DIMENSIONS ARE IN INCHES TOLERANCES: ANGLES ±.25 TWO PLACE DECIMAL ±0.010 THREE PLACE DECIMAL ±0.005 FOUR PLACE DECIMAL ±0.0005 UNMARKED FILLETS/CHAMFER .06 DE-BURR ALL PARTS		DRAWN BY:	MAM 2/23/2011
PROPRIETARY AND CONFIDENTIAL		INTERPRET GEOMETRIC TOLERANCING PER: ASME Y14.5			
THE INFORMATION CONTAINED IN THIS DRAWING IS THE SOLE PROPERTY OF LASERLINC, INC. ANY REPRODUCTION IN PART OR AS A WHOLE WITHOUT THE WRITTEN PERMISSION OF LASERLINC, INC. IS PROHIBITED.		MATERIAL		63 RA SURFACE FINISH ALL FEATURES MUST MEET SPECIFICATION AFTER PLATING BEFORE POWDER-COAT IF PLATED OR POWDER-COATED SEE FINISH	
		FINISH		TITLE: 0160-0002-00 AXION I60, SINGLE-AXIS NETLINC SPLIT-HEAD MICROMETER OVERALL AND MOUNTING DIMENSIONS	
		DO NOT SCALE DRAWING		SIZE B	DWG. NO. 0160-0002-00
				REV A	
				SCALE: 1:2	SHEET 3 OF 3

