

REVISIONS				
ZONE	REV.	DESCRIPTION	DATE	APPROVED
	A	Check-In	5/1/2015	MAM

0203-0002-00

AXION203, DUAL-AXIS

NETLINC MICROMETER

OVERALL DIMENSIONS

NOTES:

- APPROX. WEIGHT: 6 LBS [2.7KG]
- POWER REQUIREMENTS: 100-240 VAC 50/60 Hz 50 W MAX.
- MEASUREMENTS PER SECOND (Hz): "2400 [1200 PER AXIS]4800 [2400 PER AXIS](OPTIONAL)
- RESOLUTION: .000001" [.025µm]
- REPEATABILITY² UN-AVERAGED: ±.0001" [±2.5µm]
- REPEATABILITY² TWO SECOND: ±.000005" [±.125µm]

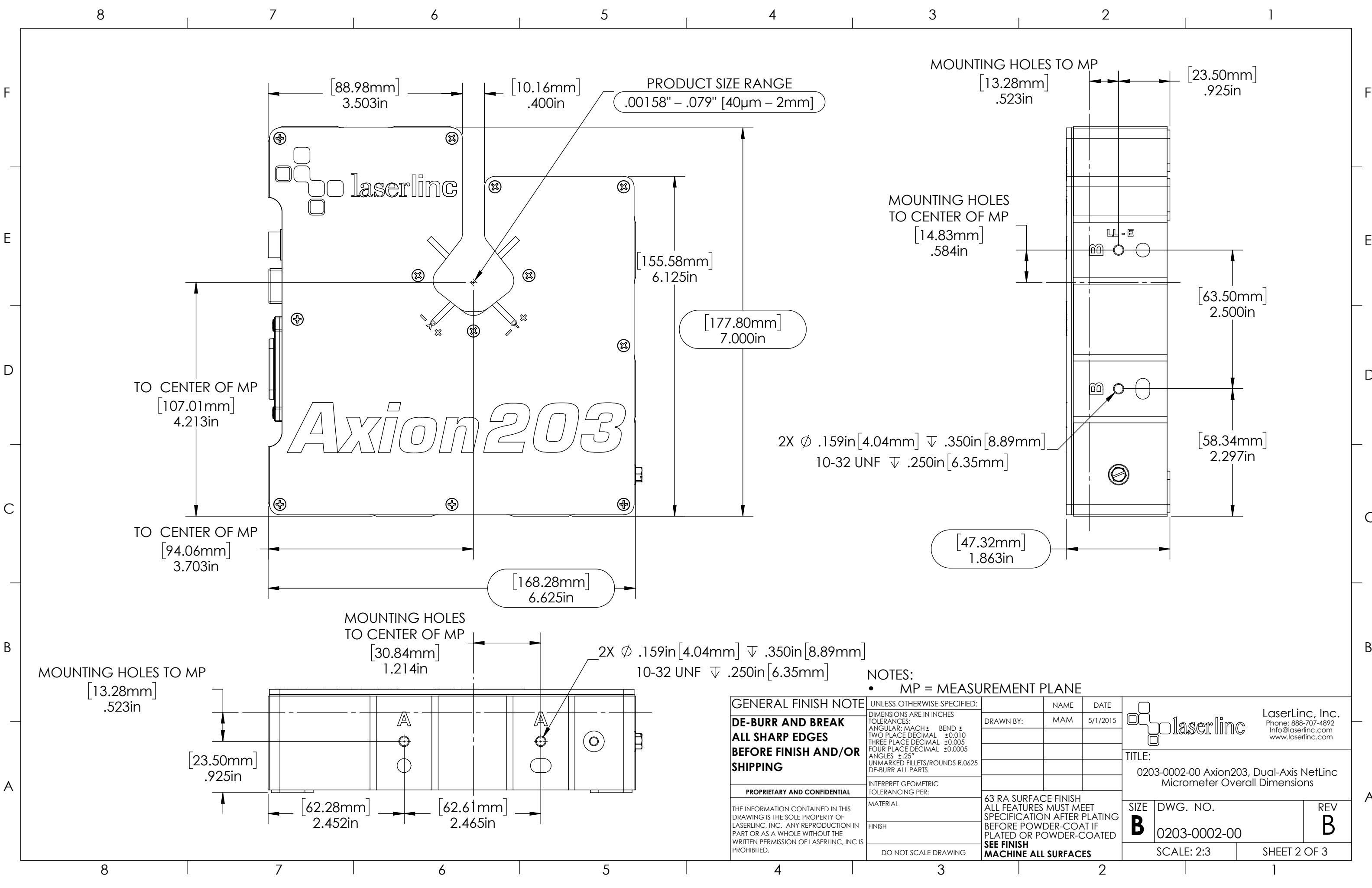
INDEX

- (1) COVER PAGE
- (2) DIMENSIONS 1
- (3) DIMENSIONS 2

GENERAL FINISH NOTE		UNLESS OTHERWISE SPECIFIED:		NAME	DATE
DE-BURR AND BREAK		DIMENSIONS ARE IN INCHES		DRAWN BY:	MAM
ALL SHARP EDGES		TOLERANCES:			5/1/2015
BEFORE FINISH AND/OR		ANGULAR: MACH+ BEND +			
SHIPPING		TWO PLACE DECIMAL ±0.010			
PROPRIETARY AND CONFIDENTIAL		THREE PLACE DECIMAL ±0.005			
THE INFORMATION CONTAINED IN THIS		FOUR PLACE DECIMAL ±0.0005			
DRAWING IS THE SOLE PROPERTY OF		ANGLES ±.25°			
LASERLINC, INC. ANY REPRODUCTION IN		UNMARKED FILLETS/ROUNDS R.0625			
PART OR AS A WHOLE WITHOUT THE		DE-BURR ALL PARTS			
WRITTEN PERMISSION OF LASERLINC, INC. IS		INTERPRET GEOMETRIC			
PROHIBITED.		TOLERANCING PER:			
		MATERIAL		63 RA SURFACE FINISH	
		FINISH		ALL FEATURES MUST MEET	
		DO NOT SCALE DRAWING		SPECIFICATION AFTER PLATING	
				BEFORE POWDER-COAT IF	
				PLATED OR POWDER-COATED	
				SEE FINISH	
				MACHINE ALL SURFACES	
				SIZE	DWG. NO.
				B	0203-0002-00
				REV	B
				SCALE: 1:1	SHEET 1 OF 3



TITLE:
0203-0002-00 Axion203, Dual-Axis NetLinc
Micrometer Overall Dimensions



PRODUCT SIZE RANGE
 .00158" - .079" [40µm - 2mm]

MOUNTING HOLES TO MP
 [13.28mm] .523in
 [23.50mm] .925in

MOUNTING HOLES TO CENTER OF MP
 [14.83mm] .584in

2X Ø .159in [4.04mm] ∇ .350in [8.89mm]
 10-32 UNF ∇ .250in [6.35mm]

TO CENTER OF MP
 [107.01mm] 4.213in

TO CENTER OF MP
 [94.06mm] 3.703in

[177.80mm] 7.000in

[168.28mm] 6.625in

[47.32mm] 1.863in

MOUNTING HOLES TO CENTER OF MP
 [30.84mm] 1.214in

MOUNTING HOLES TO MP
 [13.28mm] .523in

[23.50mm] .925in

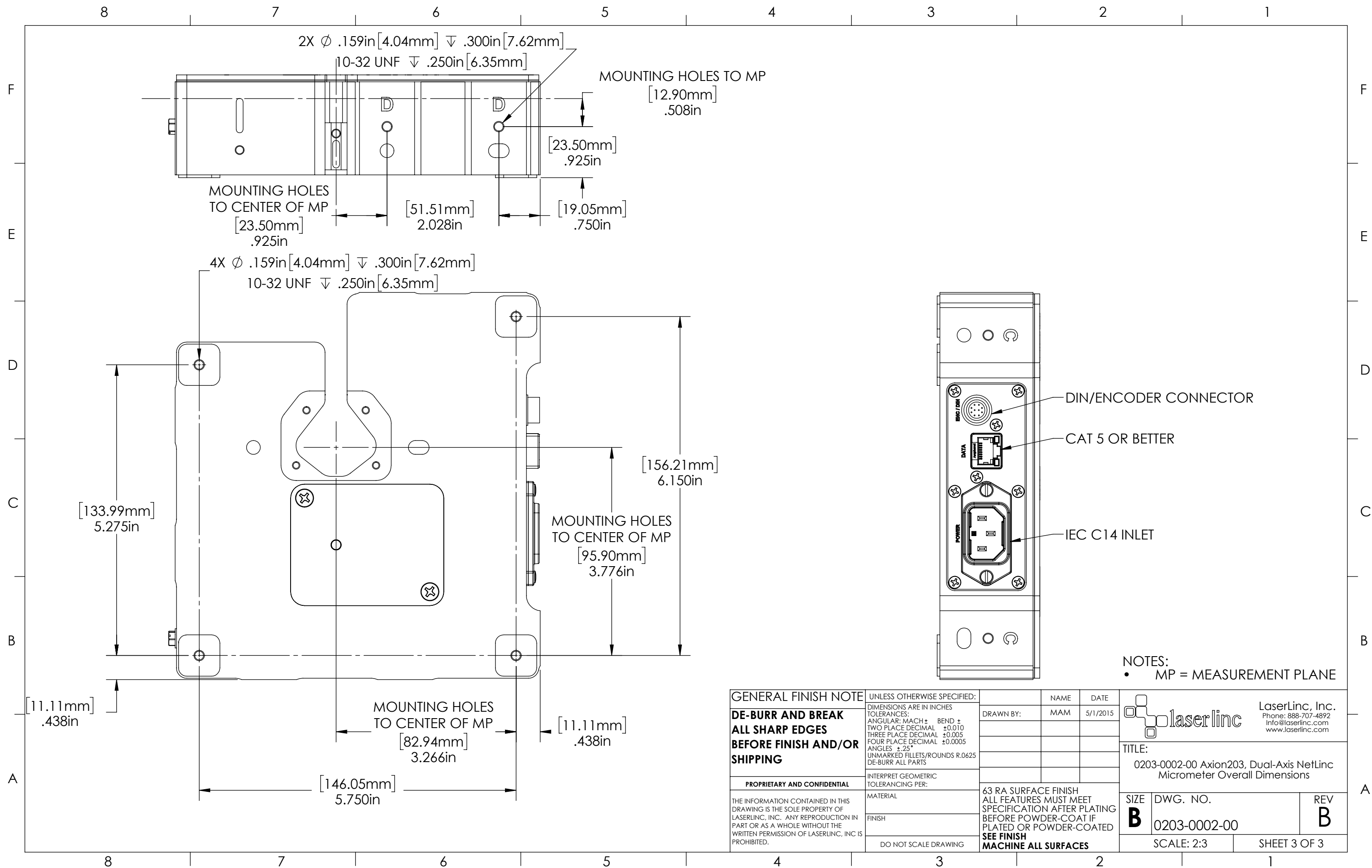
[62.28mm] 2.452in

[62.61mm] 2.465in

2X Ø .159in [4.04mm] ∇ .350in [8.89mm]
 10-32 UNF ∇ .250in [6.35mm]

NOTES:
 • MP = MEASUREMENT PLANE


GENERAL FINISH NOTE DE-BURR AND BREAK ALL SHARP EDGES BEFORE FINISH AND/OR SHIPPING	UNLESS OTHERWISE SPECIFIED:	NAME	DATE	 LaserLinc, Inc. Phone: 888-707-4892 info@laserlinc.com www.laserlinc.com
	DIMENSIONS ARE IN INCHES TOLERANCES: ANGULAR: MACH ± BEND ± TWO PLACE DECIMAL ±0.010 THREE PLACE DECIMAL ±0.005 FOUR PLACE DECIMAL ±0.0005 ANGLES ±.25° UNMARKED FILLETS/ROUNDS R.0625 DE-BURR ALL PARTS	DRAWN BY:	MAM	
PROPRIETARY AND CONFIDENTIAL THE INFORMATION CONTAINED IN THIS DRAWING IS THE SOLE PROPERTY OF LASERLINC, INC. ANY REPRODUCTION IN PART OR AS A WHOLE WITHOUT THE WRITTEN PERMISSION OF LASERLINC, INC. IS PROHIBITED.	INTERPRET GEOMETRIC TOLERANCING PER: MATERIAL FINISH DO NOT SCALE DRAWING	63 RA SURFACE FINISH ALL FEATURES MUST MEET SPECIFICATION AFTER PLATING BEFORE POWDER-COAT IF PLATED OR POWDER-COATED SEE FINISH MACHINE ALL SURFACES		TITLE: 0203-0002-00 Axion203, Dual-Axis NetLinc Micrometer Overall Dimensions
		SIZE	DWG. NO.	REV
		B	0203-0002-00	B
		SCALE: 2:3		SHEET 2 OF 3



2X ϕ .159in [4.04mm] ∇ .300in [7.62mm]
 10-32 UNF ∇ .250in [6.35mm]
 MOUNTING HOLES TO MP
 [12.90mm] .508in
 [23.50mm] .925in
 MOUNTING HOLES TO CENTER OF MP
 [23.50mm] .925in
 [51.51mm] 2.028in
 [19.05mm] .750in

4X ϕ .159in [4.04mm] ∇ .300in [7.62mm]
 10-32 UNF ∇ .250in [6.35mm]
 [133.99mm] 5.275in
 [156.21mm] 6.150in
 MOUNTING HOLES TO CENTER OF MP
 [95.90mm] 3.776in
 MOUNTING HOLES TO CENTER OF MP
 [82.94mm] 3.266in
 [11.11mm] .438in
 [146.05mm] 5.750in

DIN/ENCODER CONNECTOR
 CAT 5 OR BETTER
 IEC C14 INLET
 NOTES:
 • MP = MEASUREMENT PLANE

GENERAL FINISH NOTE DE-BURR AND BREAK ALL SHARP EDGES BEFORE FINISH AND/OR SHIPPING	UNLESS OTHERWISE SPECIFIED:	NAME	DATE	 LaserLinc, Inc. Phone: 888-707-4892 info@laserline.com www.laserline.com
	DIMENSIONS ARE IN INCHES TOLERANCES: ANGULAR: MACH ± BEND ± TWO PLACE DECIMAL ±0.010 THREE PLACE DECIMAL ±0.005 FOUR PLACE DECIMAL ±0.0005 ANGLES ±.25° UNMARKED FILLETS/ROUNDS R.0625 DE-BURR ALL PARTS	DRAWN BY:	MAM	
PROPRIETARY AND CONFIDENTIAL THE INFORMATION CONTAINED IN THIS DRAWING IS THE SOLE PROPERTY OF LASERLINC, INC. ANY REPRODUCTION IN PART OR AS A WHOLE WITHOUT THE WRITTEN PERMISSION OF LASERLINC, INC. IS PROHIBITED.	INTERPRET GEOMETRIC TOLERANCING PER: MATERIAL FINISH DO NOT SCALE DRAWING	63 RA SURFACE FINISH ALL FEATURES MUST MEET SPECIFICATION AFTER PLATING BEFORE POWDER-COAT IF PLATED OR POWDER-COATED SEE FINISH MACHINE ALL SURFACES		TITLE: 0203-0002-00 Axion203, Dual-Axis NetLinc Micrometer Overall Dimensions
		SIZE	DWG. NO.	REV
		B	0203-0002-00	B
		SCALE: 2:3		SHEET 3 OF 3