

REVISIONS				
ZONE	REV.	DESCRIPTION	DATE	APPROVED
	A	CHECK-IN	11/15/2011	MAM

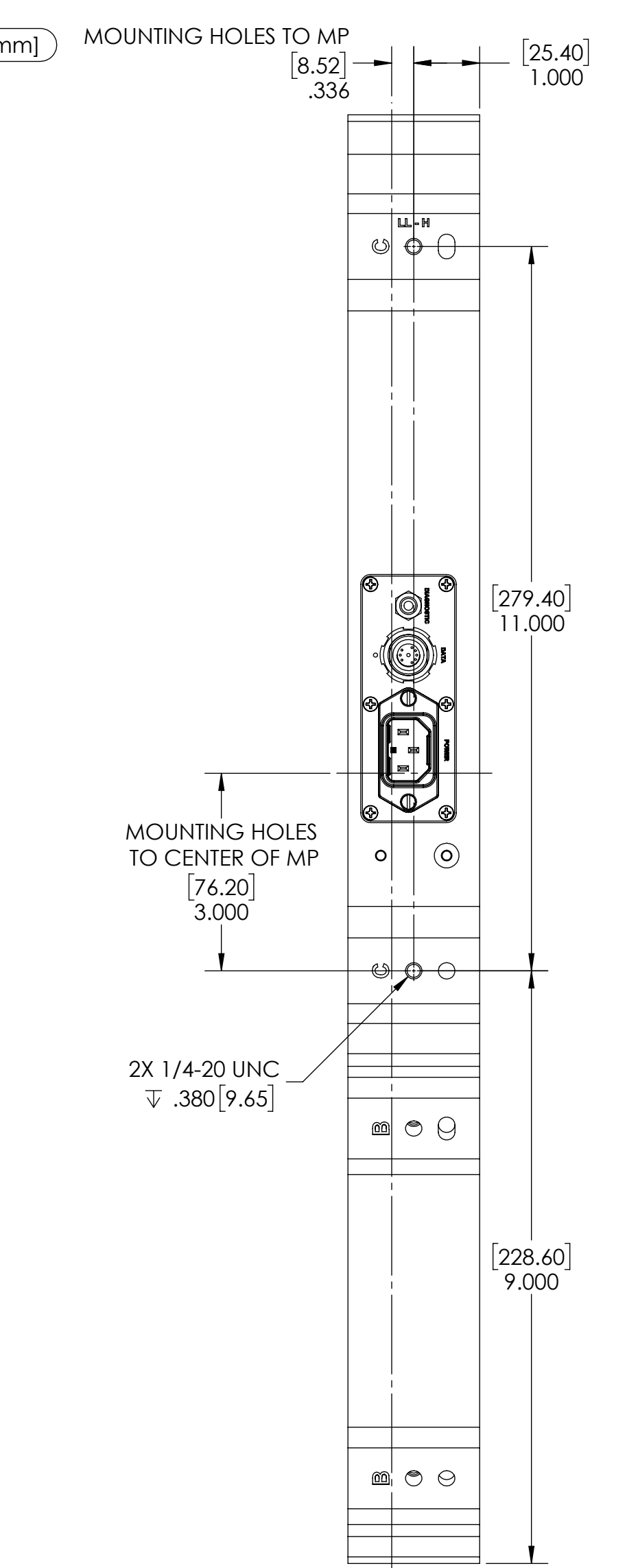
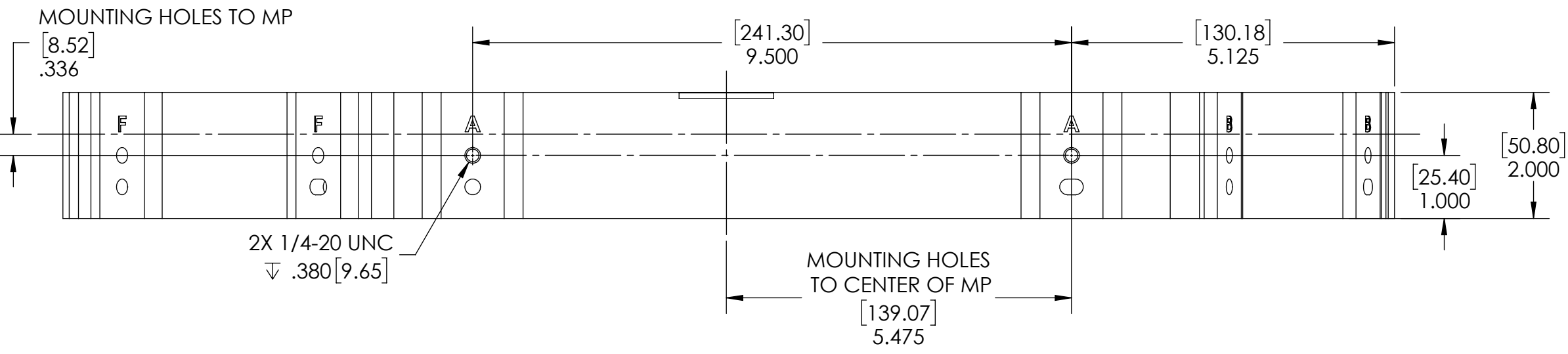
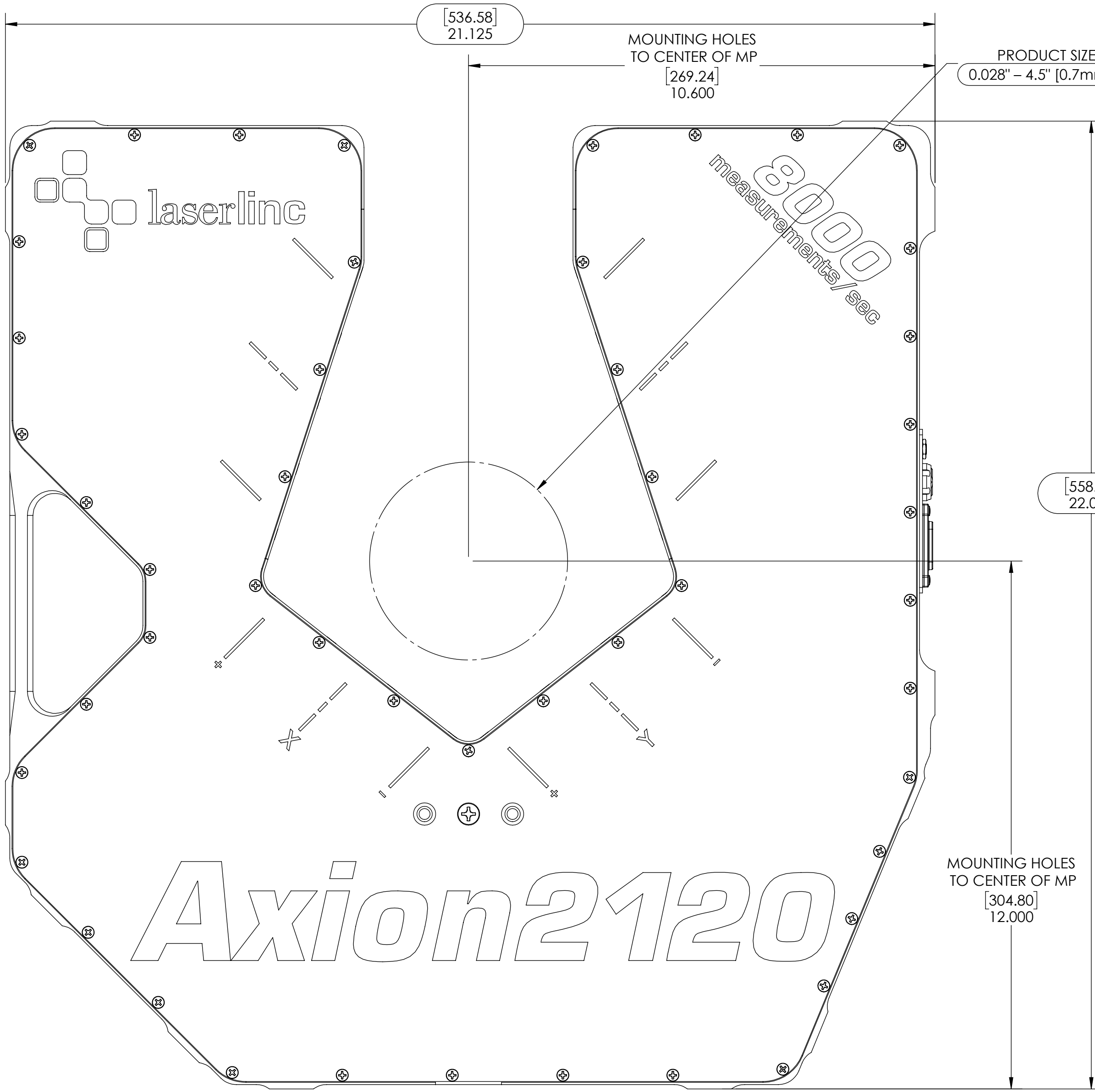
2120-0002-00 AXION2120, DUAL-AXIS NETLINC MICROMETER OVERALL MOUNTING DIMENSIONS

- NOTES:**
- APPROX. WEIGHT: 38 LBS [17.2KG]
 - POWER REQUIREMENTS: 100-240 VAC 50/60 HZ 50 W. MAX
 - MEASUREMENTS PER SECOND (Hz): 3200 [1600 PER AXIS]8000 [4000 PER AXIS] (OPTIONAL)
 - RESOLUTION: .000001" [.025µm]
 - REPEATABILITY² UN-AVERAGED: ±.0022" [±56µM]
 - REPEATABILITY² TWO SECOND: ±.00004" [±1.0µm]

INDEX

(1)	COVER PAGE
(2)	DIMENSIONS
(3)	DIMENSIONS 2
(4)	DIMENSIONS 3

GENERAL FINISH NOTE DE-BURR AND BREAK ALL SHARP EDGES BEFORE FINISH AND/OR SHIPPING	UNLESS OTHERWISE SPECIFIED: DIMENSIONS ARE IN INCHES TOLERANCES: ANGULAR: MACH ± BEND ± TWO PLACE DECIMAL: ±0.010 THREE PLACE DECIMAL: ±0.005 FOUR PLACE DECIMAL: ±0.0005 ANGLES: ±.25° UNMARKED FILLETS/ROUNDS R.0625 DE-BURR ALL PARTS	NAME: MAM DATE: 11/15/2011		LaserLinc, Inc. Phone: 888-707-4892 Info@laserlinc.com www.laserlinc.com	
	PROPRIETARY AND CONFIDENTIAL THE INFORMATION CONTAINED IN THIS DRAWING IS THE SOLE PROPERTY OF LASERLINC, INC. ANY REPRODUCTION IN PART OR AS A WHOLE WITHOUT THE WRITTEN PERMISSION OF LASERLINC, INC IS PROHIBITED.	INTERPRET GEOMETRIC TOLERANCING PER: MATERIAL: FINISH: DO NOT SCALE DRAWING			63 RA SURFACE FINISH ALL FEATURES MUST MEET SPECIFICATION AFTER PLATING BEFORE POWDER-COAT IF PLATED OR POWDER-COATED SEE FINISH MACHINE ALL SURFACES
TITLE: 2120-0002-00 Axion2120, Dual-Axis NetLinc Micrometer Overall Mounting Dimensions			SIZE: C	DWG. NO.: 2120-0002-00	REV: A
SCALE: 1:2			SHEET 1 OF 4		



NOTES:
 • MP = MEASUREMENT PLANE

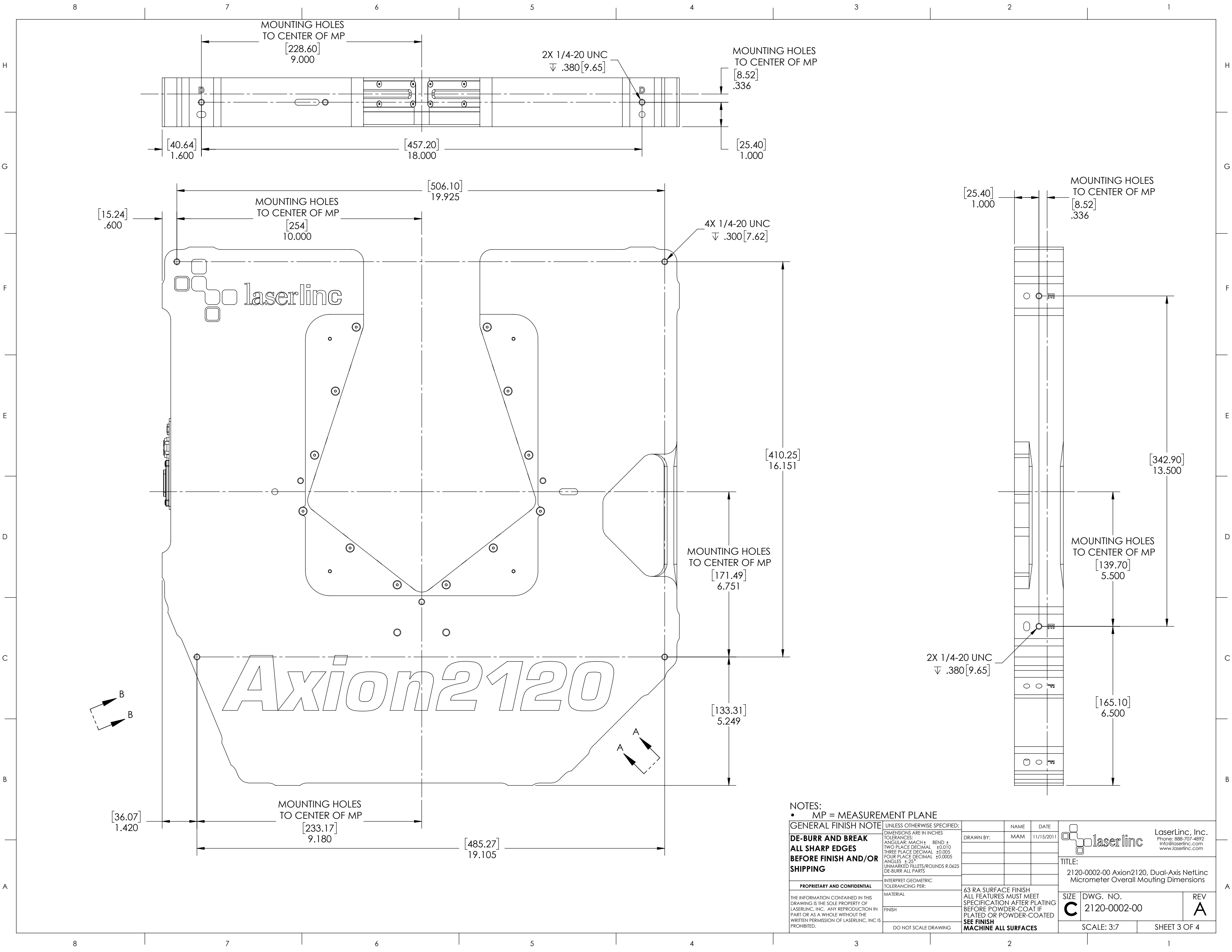
GENERAL FINISH NOTE
DE-BURR AND BREAK
ALL SHARP EDGES
BEFORE FINISH AND/OR
SHIPPING

UNLESS OTHERWISE SPECIFIED:
 DIMENSIONS ARE IN INCHES
 TOLERANCES:
 ANGULAR: MACH ± BEND ±
 TWO PLACE DECIMAL: ±0.010
 THREE PLACE DECIMAL: ±0.005
 FOUR PLACE DECIMAL: ±0.0005
 ANGLES ±.25°
 UNMARKED FILLETS/ROUNDS R.0625
 DE-BURR ALL PARTS

PROPRIETARY AND CONFIDENTIAL
 THE INFORMATION CONTAINED IN THIS DRAWING IS THE SOLE PROPERTY OF LASERLINC, INC. ANY REPRODUCTION IN PART OR AS A WHOLE WITHOUT THE WRITTEN PERMISSION OF LASERLINC, INC IS PROHIBITED.

INTERPRET GEOMETRIC TOLERANCING PER:
 MATERIAL:
 FINISH:
 DO NOT SCALE DRAWING

NAME	MAM	DATE	11/15/2011
LaserLinc, Inc. Phone: 888-707-4892 Info@laserlinc.com www.laserlinc.com			
TITLE: 2120-0002-00 Axion2120, Dual-Axis NetLinc Micrometer Overall Mounting Dimensions			
SIZE	DWG. NO.	REV	
C	2120-0002-00	A	
SCALE: 1:2		SHEET 2 OF 4	



[15.24]
.600

[40.64]
1.600

MOUNTING HOLES
TO CENTER OF MP
[254]
10.000

MOUNTING HOLES
TO CENTER OF MP
[228.60]
9.000

[457.20]
18.000

[506.10]
19.925

2X 1/4-20 UNC
▽ .380 [9.65]

MOUNTING HOLES
TO CENTER OF MP
[8.52]
.336

[25.40]
1.000

4X 1/4-20 UNC
▽ .300 [7.62]

MOUNTING HOLES
TO CENTER OF MP
[171.49]
6.751

[410.25]
16.151

[25.40]
1.000

MOUNTING HOLES
TO CENTER OF MP
[8.52]
.336

[342.90]
13.500

MOUNTING HOLES
TO CENTER OF MP
[139.70]
5.500

2X 1/4-20 UNC
▽ .380 [9.65]

[165.10]
6.500

[133.31]
5.249

[36.07]
1.420

MOUNTING HOLES
TO CENTER OF MP
[233.17]
9.180

[485.27]
19.105

NOTES:

- MP = MEASUREMENT PLANE

GENERAL FINISH NOTE
DE-BURR AND BREAK
ALL SHARP EDGES
BEFORE FINISH AND/OR
SHIPPING

UNLESS OTHERWISE SPECIFIED:
DIMENSIONS ARE IN INCHES
TOLERANCES:
ANGULAR: MACH ± BEND ±
TWO PLACE DECIMAL: ±0.010
THREE PLACE DECIMAL: ±0.005
FOUR PLACE DECIMAL: ±0.0005
ANGLES: ±.25°
UNMARKED FILLETS/ROUNDS R.0625
DE-BURR ALL PARTS

PROPRIETARY AND CONFIDENTIAL
THE INFORMATION CONTAINED IN THIS
DRAWING IS THE SOLE PROPERTY OF
LASERLINC, INC. ANY REPRODUCTION IN
PART OR AS A WHOLE WITHOUT THE
WRITTEN PERMISSION OF LASERLINC, INC IS
PROHIBITED.

INTERPRET GEOMETRIC
TOLERANCING PER:
MATERIAL
FINISH
DO NOT SCALE DRAWING

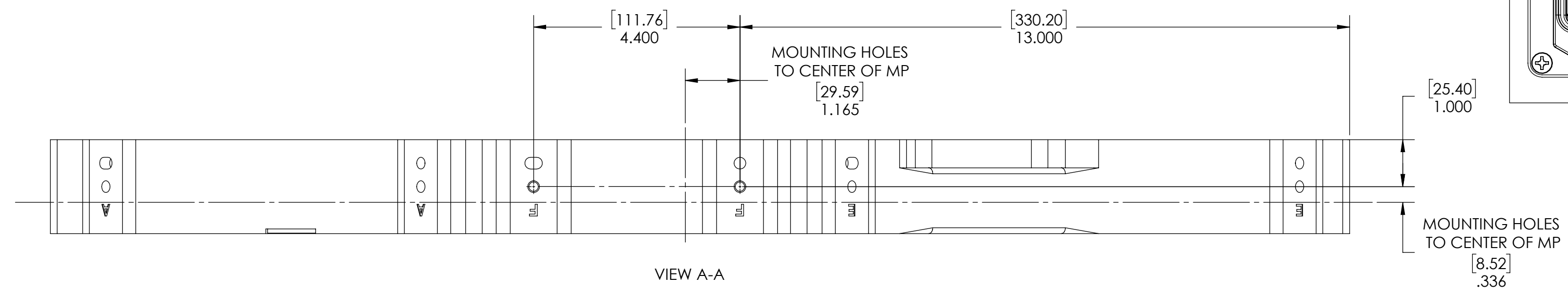
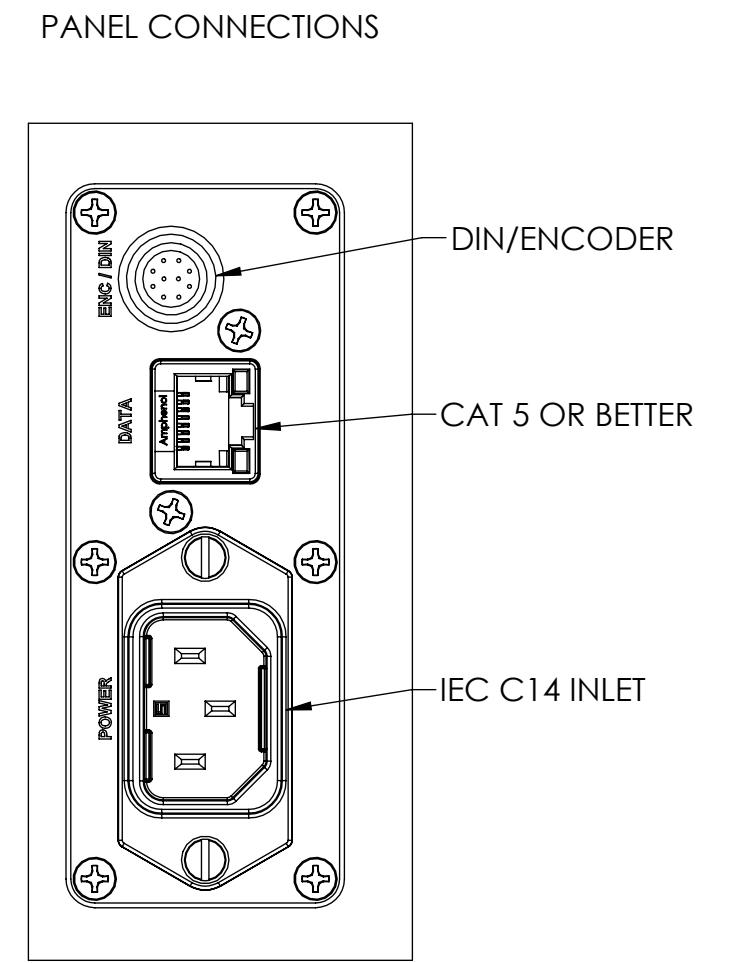
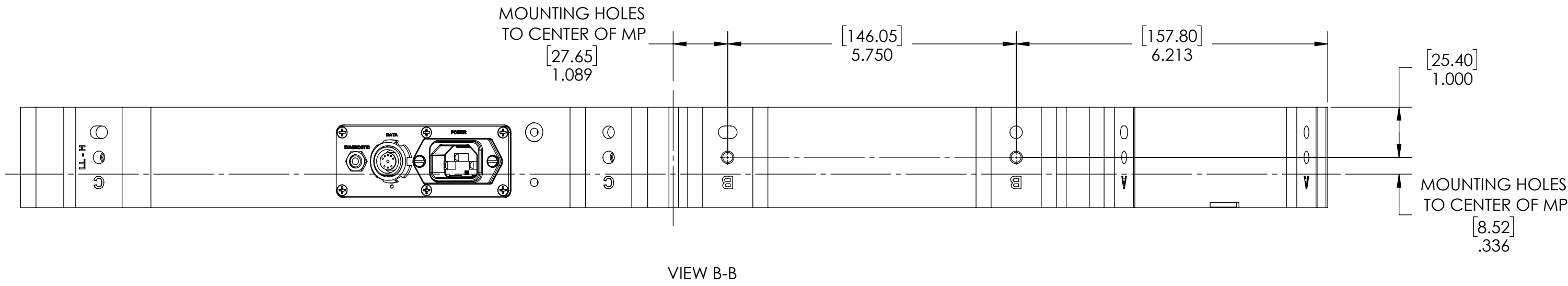
NAME	DATE
MAM	11/15/2011

laserline LaserLinc, Inc.
Phone: 888-707-4892
Info@laserline.com
www.laserline.com


TITLE:
2120-0002-00 Axion2120, Dual-Axis NetLinc
Micrometer Overall Mounting Dimensions

SIZE DWG. NO. REV
C 2120-0002-00 **A**

SCALE: 3:7 SHEET 3 OF 4



NOTES:
 • MP = MEASUREMENT PLANE

GENERAL FINISH NOTE		UNLESS OTHERWISE SPECIFIED:	NAME	DATE	 LaserLinc, Inc. Phone: 888-707-4892 info@laserlinc.com www.laserlinc.com
DE-BURR AND BREAK ALL SHARP EDGES BEFORE FINISH AND/OR SHIPPING		DIMENSIONS ARE IN MILLIMETERS TOLERANCES: ANGULAR: MACH ± BEND ± TWO PLACE DECIMAL ±0.25 THREE PLACE DECIMAL ±0.125 FOUR PLACE DECIMAL ±0.0125 ANGLES ±.25° UNMARKED FILLETS/ROUNDS R1.588 DE-BURR ALL PARTS	DRAWN BY:	MAM	
PROPRIETARY AND CONFIDENTIAL		INTERPRET GEOMETRIC TOLERANCING PER:	63 RA SURFACE FINISH ALL FEATURES MUST MEET SPECIFICATION AFTER PLATING BEFORE POWDER-COAT IF PLATED OR POWDER-COATED SEE FINISH MACHINE ALL SURFACES		
THE INFORMATION CONTAINED IN THIS DRAWING IS THE SOLE PROPERTY OF LASERLINC, INC. ANY REPRODUCTION IN PART OR AS A WHOLE WITHOUT THE WRITTEN PERMISSION OF LASERLINC, INC IS PROHIBITED.		MATERIAL	TITLE: 2120-0002-00 Axion2120, Dual-Axis NetLinc Micrometer Overall Mounting Dimensions		
		FINISH	SIZE	DWG. NO.	REV
		DO NOT SCALE DRAWING	C	2120-0002-00	A
			SCALE: 1:2		SHEET 4 OF 4