

REVISIONS				
ZONE	REV.	DESCRIPTION	DATE	APPROVED
	A	CHECK-IN	09/21/18	MAM
	B	CHANGED THE CAT #	10/03/18	MAM

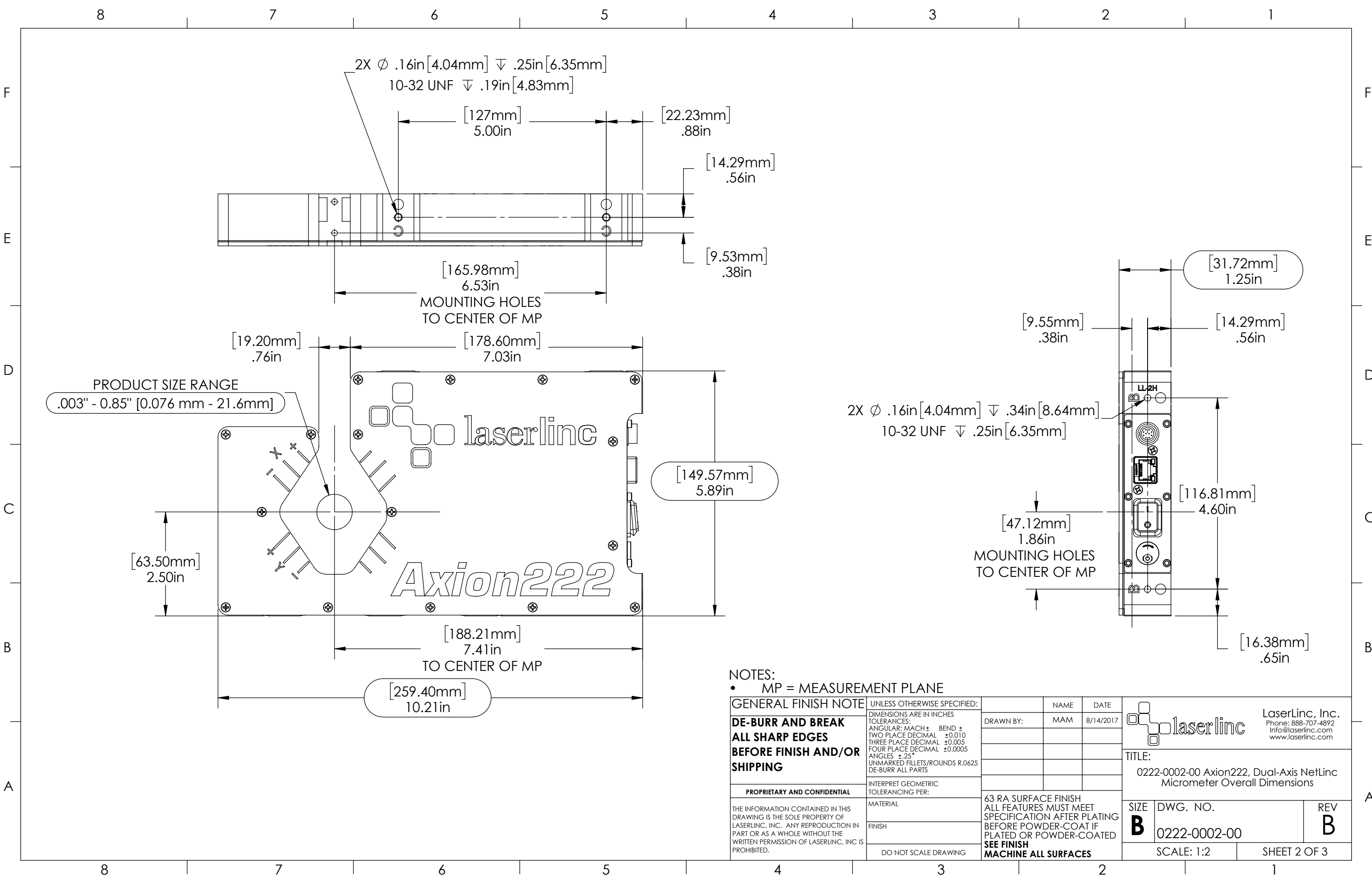
0222-0002-00
AXION222, DUAL-AXIS
NETLINC MICROMETER

- NOTES:**
- APPROX. WEIGHT: 5 LBS [2.27 KG]
 - POWER REQUIREMENTS: 12VDC 125MA, +5VDC 75MA, -5VDC 50MA PROVIDED BY HOST PC OR EXTERNAL NETLINC
 - MEASUREMENTS PER SECOND (Hz): 800 [400 PER AXIS]
 - RESOLUTION: .000001" [.025µm]
 - REPEATABILITY² UN-AVERAGED: ±.0001" [±2.5µm]
 - REPEATABILITY² TWO SECOND: ±.000005" [±.125µm]

INDEX

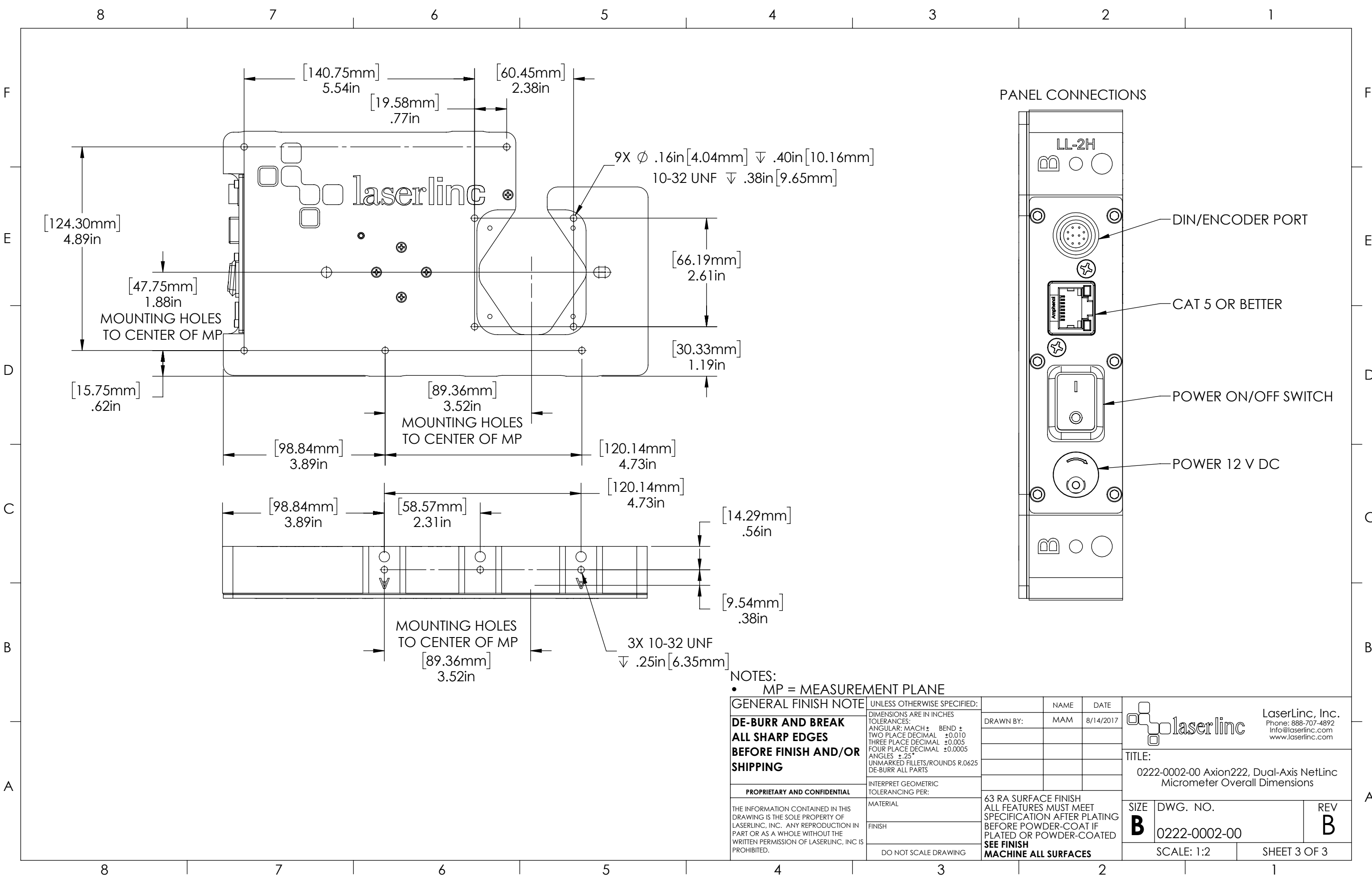
1. COVER PAGE
2. DIMENSIONS
3. DIMENSIONS 2

GENERAL FINISH NOTE		UNLESS OTHERWISE SPECIFIED:		NAME	DATE
DE-BURR AND BREAK ALL SHARP EDGES BEFORE FINISH AND/OR SHIPPING		DIMENSIONS ARE IN INCHES TOLERANCES: ANGULAR: MACH ± BEND ± TWO PLACE DECIMAL ±0.010 THREE PLACE DECIMAL ±0.005 FOUR PLACE DECIMAL ±0.0005 ANGLES ±.25° UNMARKED FILLETS/ROUNDS R.0625 DE-BURR ALL PARTS		DRAWN BY:	MAM 8/14/2017
PROPRIETARY AND CONFIDENTIAL		INTERPRET GEOMETRIC TOLERANCING PER:		LaserLinc, Inc. Phone: 888-707-4892 Info@laserlinc.com www.laserlinc.com	
THE INFORMATION CONTAINED IN THIS DRAWING IS THE SOLE PROPERTY OF LASERLINC, INC. ANY REPRODUCTION IN PART OR AS A WHOLE WITHOUT THE WRITTEN PERMISSION OF LASERLINC, INC. IS PROHIBITED.		MATERIAL		TITLE: 0222-0002-00 Axion222, Dual-Axis NetLinc Micrometer Overall Dimensions	
		FINISH		SIZE B DWG. NO. 0222-0002-00 REV B	
		DO NOT SCALE DRAWING		63 RA SURFACE FINISH ALL FEATURES MUST MEET SPECIFICATION AFTER PLATING BEFORE POWDER-COAT IF PLATED OR POWDER-COATED SEE FINISH MACHINE ALL SURFACES	
				SCALE: 1:1 SHEET 1 OF 3	




NOTES:
 • MP = MEASUREMENT PLANE

GENERAL FINISH NOTE		UNLESS OTHERWISE SPECIFIED:		NAME	DATE
DE-BURR AND BREAK ALL SHARP EDGES BEFORE FINISH AND/OR SHIPPING		DIMENSIONS ARE IN INCHES		DRAWN BY:	MAM 8/14/2017
PROPRIETARY AND CONFIDENTIAL		TOLERANCES:			
THE INFORMATION CONTAINED IN THIS DRAWING IS THE SOLE PROPERTY OF LASERLINC, INC. ANY REPRODUCTION IN PART OR AS A WHOLE WITHOUT THE WRITTEN PERMISSION OF LASERLINC, INC. IS PROHIBITED.		ANGULAR: MACH ± BEND ±			
		TWO PLACE DECIMAL ±0.010			
		THREE PLACE DECIMAL ±0.005			
		FOUR PLACE DECIMAL ±0.0005			
		ANGLES ±.25°			
		UNMARKED FILLETS/ROUNDS R.0625			
		DE-BURR ALL PARTS			
		INTERPRET GEOMETRIC TOLERANCING PER:			
		MATERIAL			
		FINISH			
		DO NOT SCALE DRAWING			
		63 RA SURFACE FINISH ALL FEATURES MUST MEET SPECIFICATION AFTER PLATING BEFORE POWDER-COAT IF PLATED OR POWDER-COATED			
		SEE FINISH MACHINE ALL SURFACES			
		LaserLinc, Inc. Phone: 888-707-4892 Info@laserlinc.com www.laserlinc.com			
		TITLE: 0222-0002-00 Axion222, Dual-Axis NetLinc Micrometer Overall Dimensions			
SIZE	DWG. NO.	REV			
B	0222-0002-00	B			
SCALE: 1:2		SHEET 2 OF 3			



NOTES:
 • MP = MEASUREMENT PLANE

GENERAL FINISH NOTE		UNLESS OTHERWISE SPECIFIED:		NAME	DATE
DE-BURR AND BREAK ALL SHARP EDGES BEFORE FINISH AND/OR SHIPPING		DIMENSIONS ARE IN INCHES TOLERANCES: ANGULAR: MACH ± BEND ± TWO PLACE DECIMAL ±0.010 THREE PLACE DECIMAL ±0.005 FOUR PLACE DECIMAL ±0.0005 ANGLES ±.25° UNMARKED FILLETS/ROUNDS R.0625 DE-BURR ALL PARTS		DRAWN BY:	MAM 8/14/2017
PROPRIETARY AND CONFIDENTIAL		INTERPRET GEOMETRIC TOLERANCING PER:		 LaserLinc, Inc. Phone: 888-707-4892 Info@laserlinc.com www.laserlinc.com	
THE INFORMATION CONTAINED IN THIS DRAWING IS THE SOLE PROPERTY OF LASERLINC, INC. ANY REPRODUCTION IN PART OR AS A WHOLE WITHOUT THE WRITTEN PERMISSION OF LASERLINC, INC. IS PROHIBITED.		MATERIAL		TITLE: 0222-0002-00 Axion222, Dual-Axis NetLinc Micrometer Overall Dimensions	
FINISH		63 RA SURFACE FINISH ALL FEATURES MUST MEET SPECIFICATION AFTER PLATING BEFORE POWDER-COAT IF PLATED OR POWDER-COATED SEE FINISH MACHINE ALL SURFACES		SIZE B	DWG. NO. 0222-0002-00
DO NOT SCALE DRAWING				SCALE: 1:2	REV B SHEET 3 OF 3