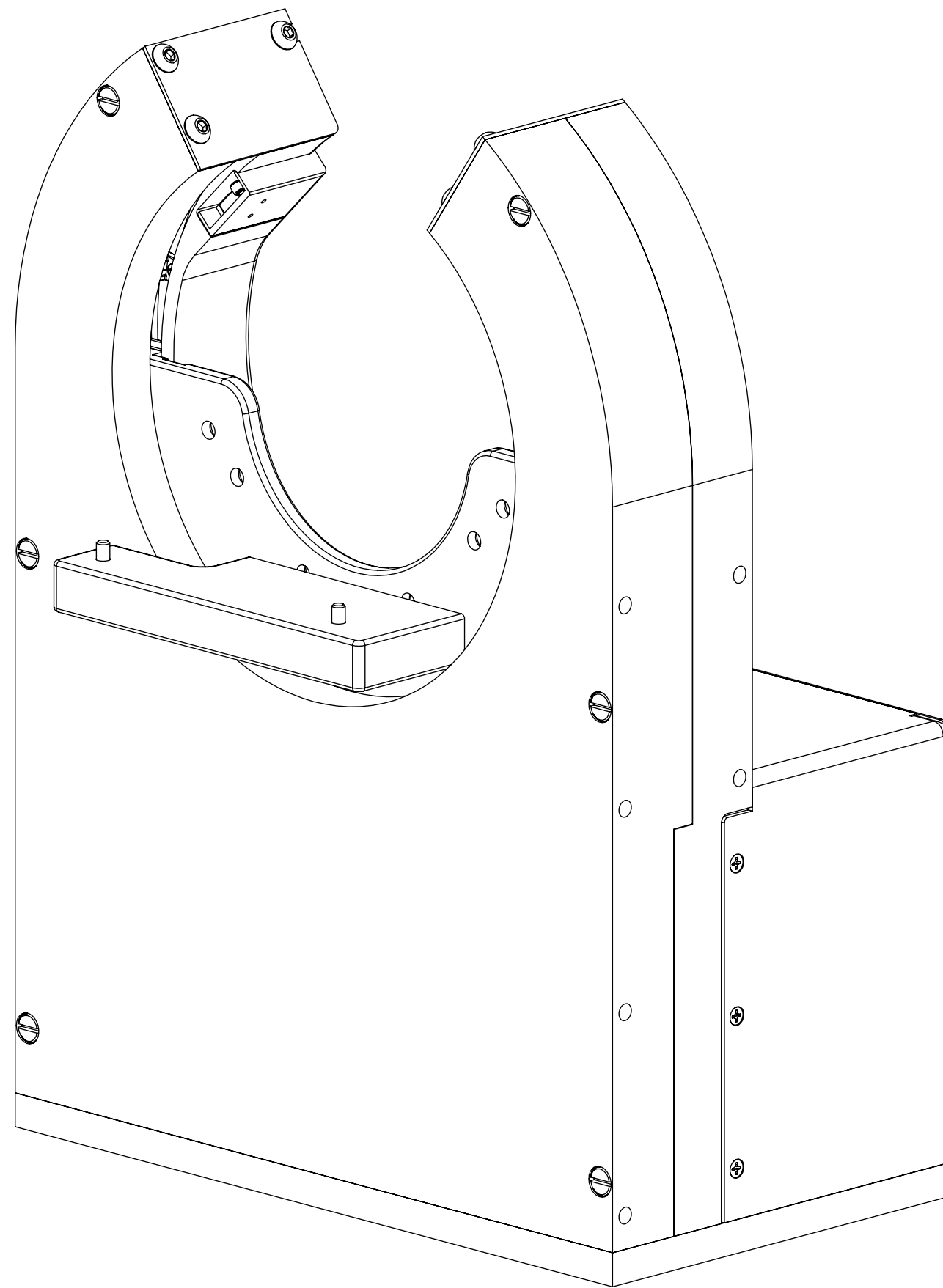



REVISIONS				
ZONE	REV.	DESCRIPTION	DATE	APPROVED
	A	Check-In	1/10/2014	MAM
	B	SHOWING BOTH 122 & 222	1/18/2021	EMM

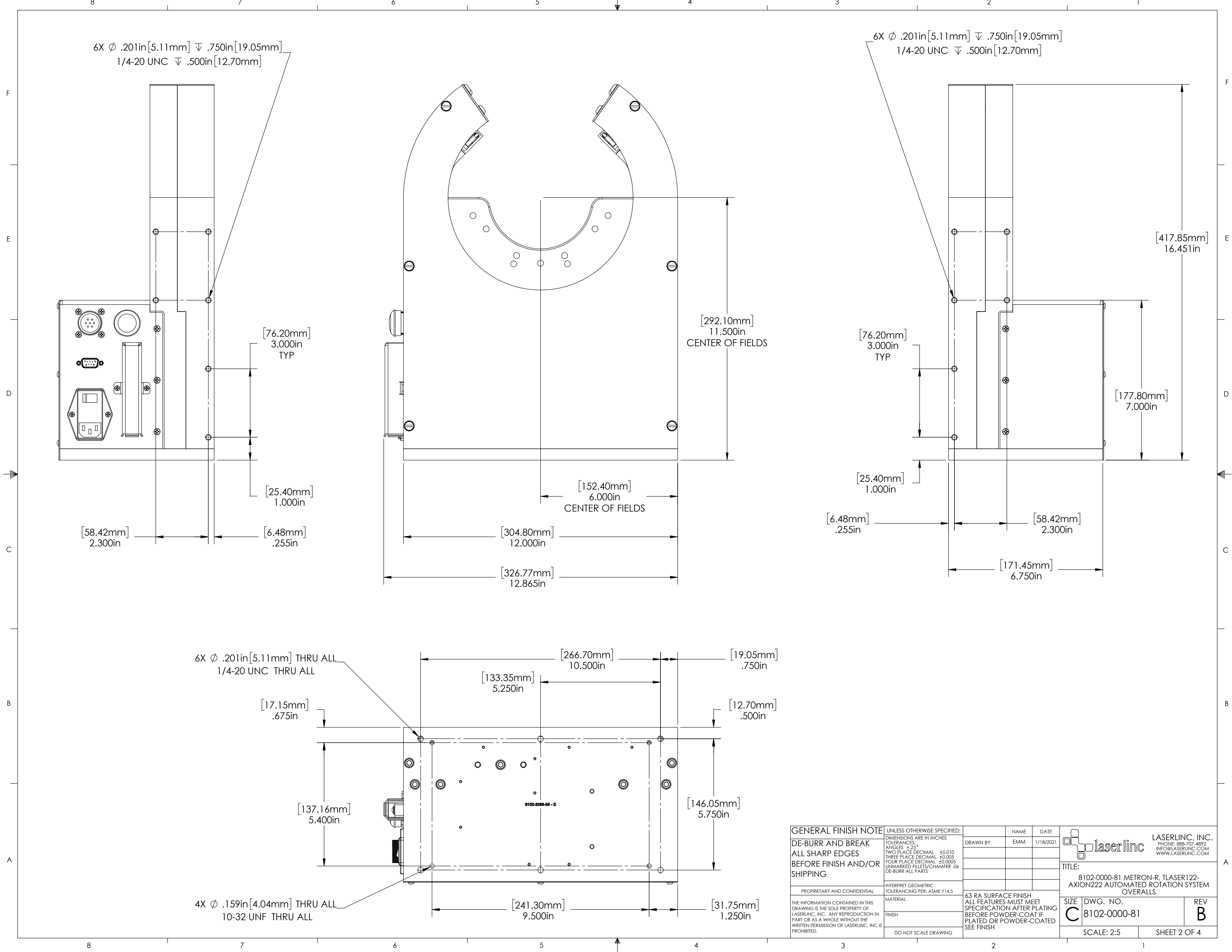


METRON-R, TLASER122- AXION222 AUTOMATED ROTATION SYSTEM OVERALLS

INDEX

- (1) COVER PAGE
- (2) FIXTURE DIMENSIONS
- (3) MOUNTED TLASER122
- (4) MOUNTED AXION222

GENERAL FINISH NOTE		UNLESS OTHERWISE SPECIFIED:		NAME	DATE	 LASERLINC, INC. PHONE: 888-707-4892 INFO@LASERLINC.COM WWW.LASERLINC.COM
DE-BURR AND BREAK ALL SHARP EDGES BEFORE FINISH AND/OR SHIPPING		DIMENSIONS ARE IN INCHES TOLERANCES: ANGLES ±.25° TWO PLACE DECIMAL ±0.010 THREE PLACE DECIMAL ±0.005 FOUR PLACE DECIMAL ±0.0005 UNMARKED FILLETS/CHAMFER .06 DE-BURR ALL PARTS		DRAWN BY:	EMM	
PROPRIETARY AND CONFIDENTIAL THE INFORMATION CONTAINED IN THIS DRAWING IS THE SOLE PROPERTY OF LASERLINC, INC. ANY REPRODUCTION IN PART OR AS A WHOLE WITHOUT THE WRITTEN PERMISSION OF LASERLINC, INC IS PROHIBITED.		INTERPRET GEOMETRIC TOLERANCING PER: ASME Y14.5		63 RA SURFACE FINISH ALL FEATURES MUST MEET SPECIFICATION AFTER PLATING BEFORE POWDER-COAT IF PLATED OR POWDER-COATED SEE FINISH		TITLE: 8102-0000-81 METRON-R, TLASER122-AXION222 AUTOMATED ROTATION SYSTEM OVERALLS
		MATERIAL FINISH DO NOT SCALE DRAWING		SIZE DWG. NO. C 8102-0000-81		REV B
				SCALE: 1:2		SHEET 1 OF 4



6X Ø .201in[5.11mm] ∇ .750in[19.05mm]
1/4-20 UNC ∇ .500in[12.70mm]

6X Ø .201in[5.11mm] ∇ .750in[19.05mm]
1/4-20 UNC ∇ .500in[12.70mm]

6X Ø .201in[5.11mm] THRU ALL
1/4-20 UNC THRU ALL

4X Ø .159in[4.04mm] THRU ALL
10-32 UNF THRU ALL

[76.20mm]
3.000in
TYP

[292.10mm]
11.500in
CENTER OF FIELDS

[76.20mm]
3.000in
TYP

[417.85mm]
16.451in

[25.40mm]
1.000in

[152.40mm]
6.000in
CENTER OF FIELDS

[25.40mm]
1.000in

[177.80mm]
7.000in

[58.42mm]
2.300in

[6.48mm]
.255in

[304.80mm]
12.000in

[6.48mm]
.255in

[58.42mm]
2.300in

[326.77mm]
12.865in

[171.45mm]
6.750in

[17.15mm]
.675in

[133.35mm]
5.250in

[19.05mm]
.750in

[12.70mm]
.500in

[137.16mm]
5.400in

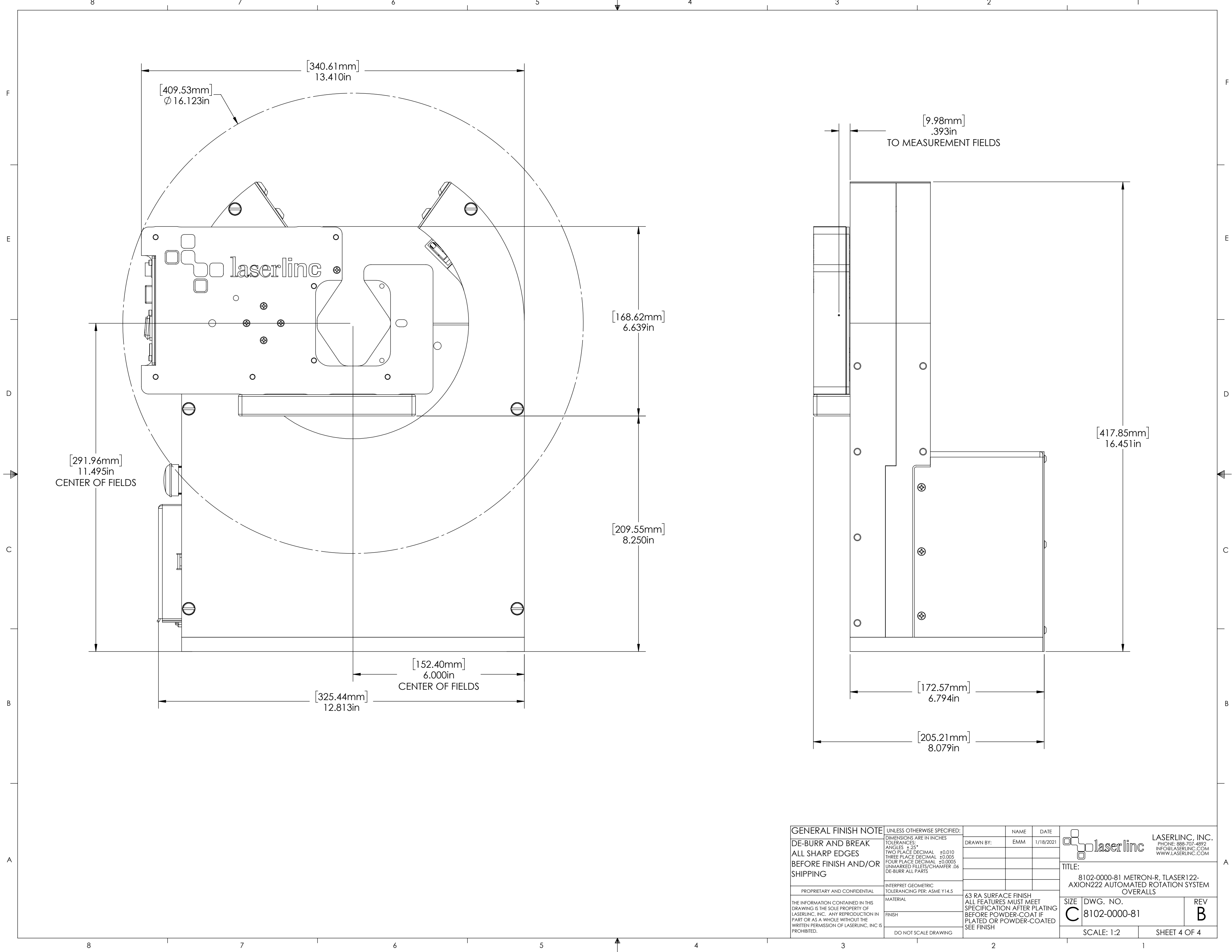
[146.05mm]
5.750in

8102-0000-81

[241.30mm]
9.500in

[31.75mm]
1.250in

GENERAL FINISH NOTE		UNLESS OTHERWISE SPECIFIED:		NAME	DATE
DE-BURR AND BREAK ALL SHARP EDGES BEFORE FINISH AND/OR SHIPPING		DIMENSIONS ARE IN INCHES TOLERANCES: ANGLES ±25° TWO PLACE DECIMAL ±0.010 THREE PLACE DECIMAL ±0.005 FOUR PLACE DECIMAL ±0.0005 UNMARKED FILLETS/CHAMFER .06 DE-BURR ALL PARTS		DRAWN BY:	EMM 1/18/2021
PROPRIETARY AND CONFIDENTIAL		INTERPRET GEOMETRIC TOLERANCING PER: ASME Y14.5			
THE INFORMATION CONTAINED IN THIS DRAWING IS THE SOLE PROPERTY OF LASERLINC, INC. ANY REPRODUCTION IN PART OR AS A WHOLE WITHOUT THE WRITTEN PERMISSION OF LASERLINC, INC IS PROHIBITED.		MATERIAL		63 RA SURFACE FINISH ALL FEATURES MUST MEET SPECIFICATION AFTER PLATING BEFORE POWDER-COAT IF PLATED OR POWDER-COATED SEE FINISH	
		FINISH		DO NOT SCALE DRAWING	
		TITLE:		LASERLINC, INC. PHONE: 888-707-4892 INFO@LASERLINC.COM WWW.LASERLINC.COM	
		SIZE		DWG. NO.	
		C		8102-0000-81	
		REV		B	
		SCALE: 2:5		SHEET 2 OF 4	



GENERAL FINISH NOTE		UNLESS OTHERWISE SPECIFIED:		NAME	DATE
DE-BURR AND BREAK ALL SHARP EDGES BEFORE FINISH AND/OR SHIPPING		DIMENSIONS ARE IN INCHES TOLERANCES: ANGLES $\pm 25^\circ$ TWO PLACE DECIMAL ± 0.010 THREE PLACE DECIMAL ± 0.005 FOUR PLACE DECIMAL ± 0.0005 UNMARKED FILLETS/CHAMFER .06 DE-BURR ALL PARTS		DRAWN BY:	EMM 1/18/2021
PROPRIETARY AND CONFIDENTIAL		INTERPRET GEOMETRIC TOLERANCING PER: ASME Y14.5			
THE INFORMATION CONTAINED IN THIS DRAWING IS THE SOLE PROPERTY OF LASERLINC, INC. ANY REPRODUCTION IN PART OR AS A WHOLE WITHOUT THE WRITTEN PERMISSION OF LASERLINC, INC IS PROHIBITED.		MATERIAL		63 RA SURFACE FINISH ALL FEATURES MUST MEET SPECIFICATION AFTER PLATING BEFORE POWDER-COAT IF PLATED OR POWDER-COATED SEE FINISH	
		FINISH		DO NOT SCALE DRAWING	
				TITLE: 8102-0000-81 METRON-R, TLASER122- AXION222 AUTOMATED ROTATION SYSTEM OVERALLS	
SIZE	DWG. NO.			REV	
C	8102-0000-81			B	
SCALE: 1:2			SHEET 4 OF 4		

