

8

7

6

5

4

3

2

1

F

E

D

C

B

A

F

E

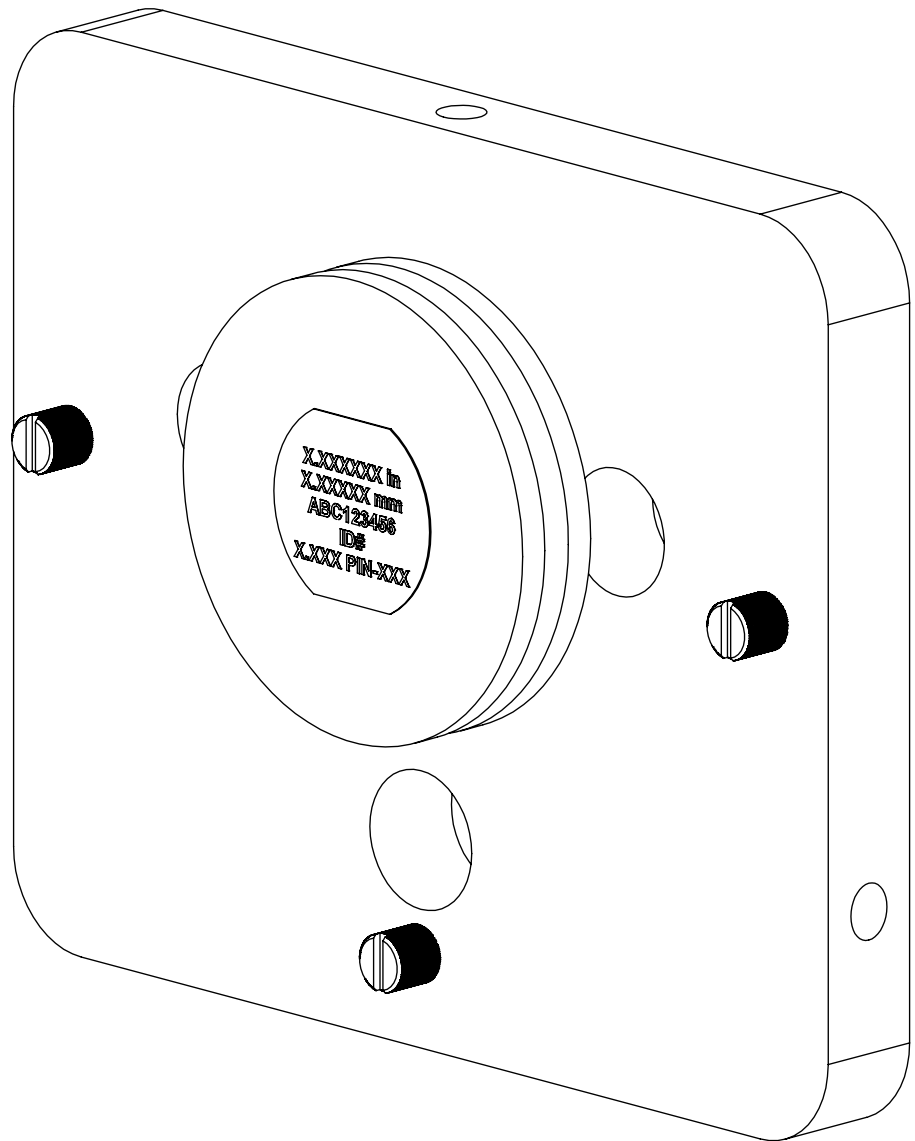
D

C

B

A

REVISIONS				
ZONE	REV.	DESCRIPTION	DATE	APPROVED
	A	CHECK-IN	9/27/2012	MAM
	B	ADDED 1.000, .300, 2MM, .020" & .005 CONFIGURATIONS	5/25/2023	CJM



# ADVANCED MED CAL STANDARDS FOR AXION230/TRITON331

## INDEX

- (1) COVER PAGE
- (2) BOM TABLE
- (3) ASSEMBLE CALIBRATION FIXTURE
- (4) 1.000IN PIN CONFIGURATION
- (5) .300IN PIN CONFIGURATION
- (6) 2MM PIN CONFIGURATION
- (7) .020IN PIN CONFIGURATION
- (8) .005IN PIN CONFIGURATION
- (9) MOUNT 331 MICROMETER
- (10) MOUNT 230 MICROMETER
- (11) FIXTURE OVERALLS
- (12) 230 MOUNTED OVERALLS
- (13) 331 MOUNTED OVERALLS

<b>GENERAL FINISH NOTE</b>		UNLESS OTHERWISE SPECIFIED:		NAME	DATE
<b>DE-BURR AND BREAK</b>		DIMENSIONS ARE IN INCHES		DRAWN BY:	EMM
<b>ALL SHARP EDGES</b>		TOLERANCES:			12/03/2020
<b>BEFORE FINISH AND/OR SHIPPING</b>		ANGLES ±.25°			
<b>PROPRIETARY AND CONFIDENTIAL</b>		TWO PLACE DECIMAL ±0.010			
THE INFORMATION CONTAINED IN THIS DRAWING IS THE SOLE PROPERTY OF LASERLINC, INC. ANY REPRODUCTION IN PART OR AS A WHOLE WITHOUT THE WRITTEN PERMISSION OF LASERLINC, INC. IS PROHIBITED.		THREE PLACE DECIMAL ±0.005			
		FOUR PLACE DECIMAL ±0.0005			
		UNMARKED FILLETS/CHAMFER .06			
		DE-BURR ALL PARTS			
		INTERPRET GEOMETRIC TOLERANCING PER: ASME Y14.5			
		MATERIAL			
		FINISH			
		DO NOT SCALE DRAWING			
		63 RA SURFACE FINISH			
		ALL FEATURES MUST MEET SPECIFICATION AFTER PLATING BEFORE POWDER-COAT IF PLATED OR POWDER-COATED			
		<b>SEE FINISH</b>			
		TITLE:		LASERLINC, INC. PHONE: 888-707-4892 INFO@LASERLINC.COM WWW.LASERLINC.COM	
		ADVANCED MED CAL STANDARDS FOR AXION230/TRITON331			
SIZE	DWG. NO.	REV			
<b>B</b>	0200-0002-34	<b>B</b>			
SCALE: 1:1		SHEET 1 OF 13			

8

7

6

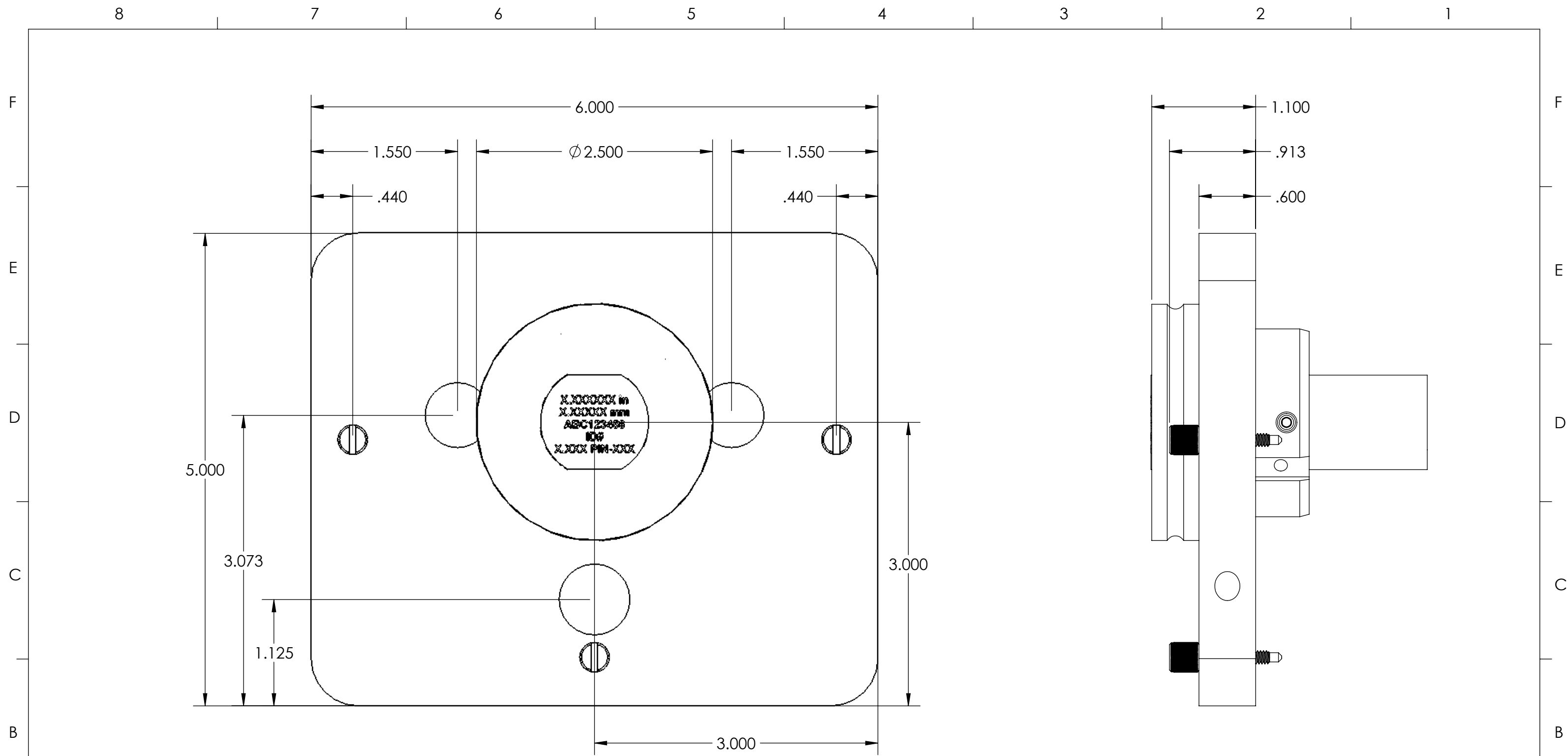
5

4

3

2

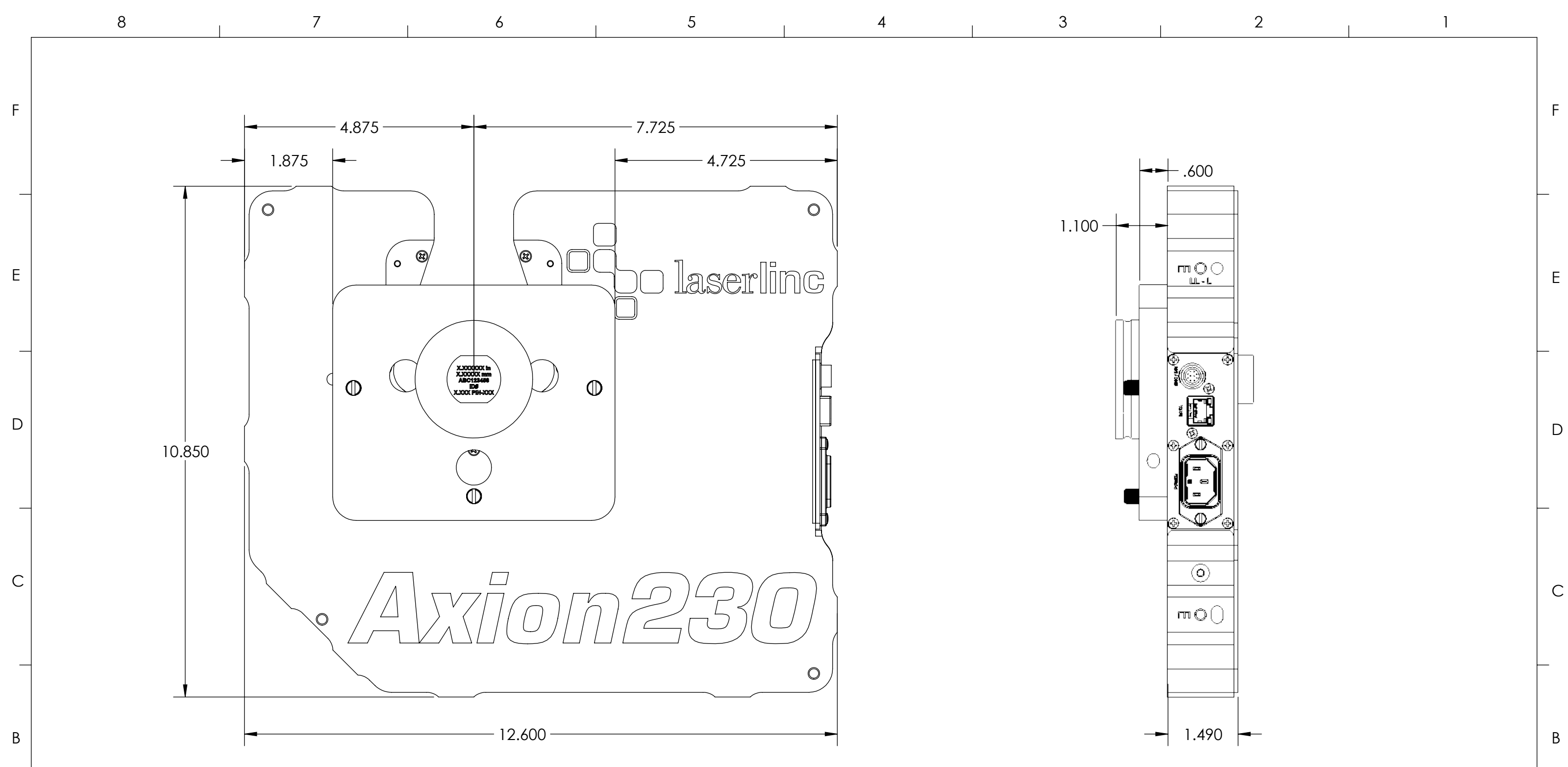
1



<b>GENERAL FINISH NOTE</b>		UNLESS OTHERWISE SPECIFIED:		NAME	DATE
<b>DE-BURR AND BREAK ALL SHARP EDGES BEFORE FINISH AND/OR SHIPPING</b>		DIMENSIONS ARE IN INCHES TOLERANCES: ANGLES ±.25° TWO PLACE DECIMAL ±0.010 THREE PLACE DECIMAL ±0.005 FOUR PLACE DECIMAL ±0.0005 UNMARKED FILLETS/CHAMFER .06 DE-BURR ALL PARTS		DRAWN BY:	EMM 12/03/2020
<b>PROPRIETARY AND CONFIDENTIAL</b>		INTERPRET GEOMETRIC TOLERANCING PER: ASME Y14.5			
THE INFORMATION CONTAINED IN THIS DRAWING IS THE SOLE PROPERTY OF LASERLINC, INC. ANY REPRODUCTION IN PART OR AS A WHOLE WITHOUT THE WRITTEN PERMISSION OF LASERLINC, INC. IS PROHIBITED.		MATERIAL		63 RA SURFACE FINISH ALL FEATURES MUST MEET SPECIFICATION AFTER PLATING BEFORE POWDER-COAT IF PLATED OR POWDER-COATED <b>SEE FINISH</b>	
		FINISH		TITLE: ADVANCED MED CAL STANDARDS FOR AXION230/TRITON331	
		DO NOT SCALE DRAWING		SIZE <b>B</b>	DWG. NO. 0200-0002-34
				SCALE: 1:2	REV <b>B</b>
				SHEET 11 OF 13	


**LASERLINC, INC.**  
PHONE: 937-318-2440  
INFO@LASERLINC.COM  
WWW.LASERLINC.COM





<b>GENERAL FINISH NOTE</b>		UNLESS OTHERWISE SPECIFIED:		NAME	DATE
<b>DE-BURR AND BREAK ALL SHARP EDGES BEFORE FINISH AND/OR SHIPPING</b>		DIMENSIONS ARE IN INCHES TOLERANCES: ANGLES ±.25 TWO PLACE DECIMAL ±0.010 THREE PLACE DECIMAL ±0.005 FOUR PLACE DECIMAL ±0.0005 UNMARKED FILLETS/CHAMFER .06 DE-BURR ALL PARTS		DRAWN BY:	EMM 12/03/2020
<b>PROPRIETARY AND CONFIDENTIAL</b>		INTERPRET GEOMETRIC TOLERANCING PER: ASME Y14.5			
THE INFORMATION CONTAINED IN THIS DRAWING IS THE SOLE PROPERTY OF LASERLINC, INC. ANY REPRODUCTION IN PART OR AS A WHOLE WITHOUT THE WRITTEN PERMISSION OF LASERLINC, INC. IS PROHIBITED.		MATERIAL		63 RA SURFACE FINISH ALL FEATURES MUST MEET SPECIFICATION AFTER PLATING BEFORE POWDER-COAT IF PLATED OR POWDER-COATED <b>SEE FINISH</b>	
		FINISH			
		DO NOT SCALE DRAWING			
				<b>LASERLINC, INC.</b> PHONE: 937-318-2440 INFO@LASERLINC.COM WWW.LASERLINC.COM	
TITLE: ADVANCED MED CAL STANDARDS FOR AXION230/TRITON331					
SIZE	DWG. NO.			REV	
<b>B</b>	0200-0002-34			<b>B</b>	
SCALE: 1:2				SHEET 13 OF 13	