

REVISIONS				
ZONE	REV.	DESCRIPTION	DATE	APPROVED
	A	CHECK-IN	2/5/2011	MAM

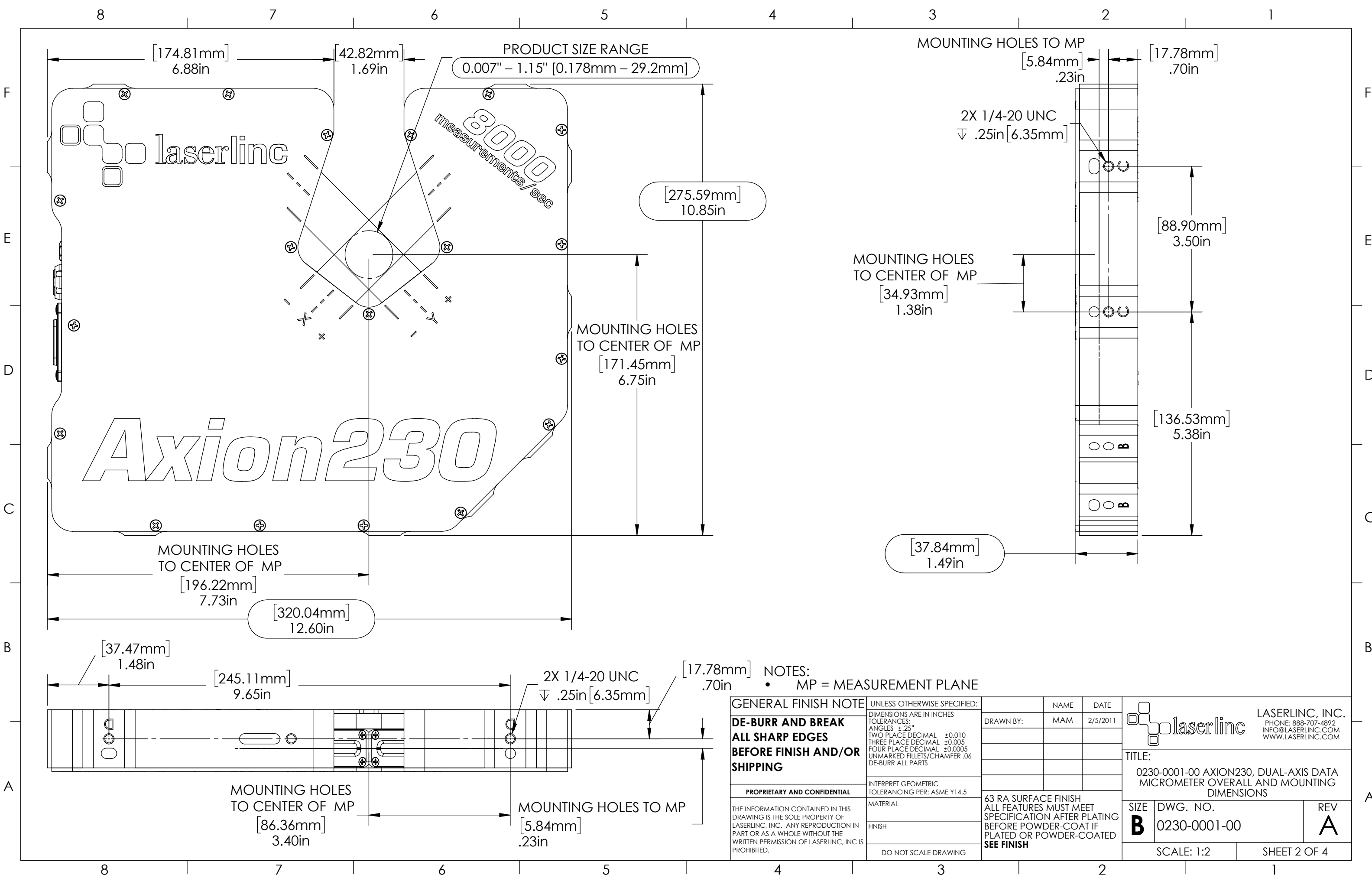
0230-0001-00 AXION230, DUAL-AXIS DATA MICROMETER OVERALL AND MOUNTING DIMENSIONS

- NOTES:**
- APPROX. WEIGHT: 20 LBS [9 KG]
 - POWER REQUIREMENTS: 100-240 VAC 50/60 Hz 50 W MAX.
 - MEASUREMENTS PER SECOND (Hz): 3200 [1600 PER AXIS] 8000 [4000 PER AXIS] (OPTIONAL)
 - RESOLUTION: .000001" [.025µm]
 - REPEATABILITY² UNAVERAGED: ±.0004" [±10µm]
 - REPEATABILITY² TWO SECOND: ±.000005" [±.13µm]

INDEX

- (1) COVER PAGE
- (2) DIMENSIONS 1
- (3) DIMENSIONS 2
- (4) DIMENSIONS 3

GENERAL FINISH NOTE		UNLESS OTHERWISE SPECIFIED:		NAME	DATE
DE-BURR AND BREAK ALL SHARP EDGES BEFORE FINISH AND/OR SHIPPING		DIMENSIONS ARE IN INCHES TOLERANCES: ANGLES ±.25 TWO PLACE DECIMAL ±0.010 THREE PLACE DECIMAL ±0.005 FOUR PLACE DECIMAL ±0.0005 UNMARKED FILLETS/CHAMFER .06 DE-BURR ALL PARTS		DRAWN BY:	MAM 2/5/2011
PROPRIETARY AND CONFIDENTIAL		INTERPRET GEOMETRIC TOLERANCING PER: ASME Y14.5		LASERLINC, INC. PHONE: 888-707-4892 INFO@LASERLINC.COM WWW.LASERLINC.COM	
THE INFORMATION CONTAINED IN THIS DRAWING IS THE SOLE PROPERTY OF LASERLINC, INC. ANY REPRODUCTION IN PART OR AS A WHOLE WITHOUT THE WRITTEN PERMISSION OF LASERLINC, INC. IS PROHIBITED.		MATERIAL			
		FINISH		TITLE: 0230-0001-00 AXION230, DUAL-AXIS DATA MICROMETER OVERALL AND MOUNTING DIMENSIONS	
		DO NOT SCALE DRAWING		63 RA SURFACE FINISH ALL FEATURES MUST MEET SPECIFICATION AFTER PLATING BEFORE POWDER-COAT IF PLATED OR POWDER-COATED SEE FINISH	
				SIZE	DWG. NO.
				B	0230-0001-00
				REV	A
				SCALE: 1:2	SHEET 1 OF 4



PRODUCT SIZE RANGE
0.007" - 1.15" [0.178mm - 29.2mm]

MOUNTING HOLES TO MP
[5.84mm] .23in [17.78mm] .70in

2X 1/4-20 UNC
∇ .25in [6.35mm]

MOUNTING HOLES TO CENTER OF MP
[34.93mm] 1.38in

MOUNTING HOLES TO CENTER OF MP
[171.45mm] 6.75in

MOUNTING HOLES TO CENTER OF MP
[196.22mm] 7.73in

[320.04mm] 12.60in

[37.47mm] 1.48in

[245.11mm] 9.65in

2X 1/4-20 UNC
∇ .25in [6.35mm]

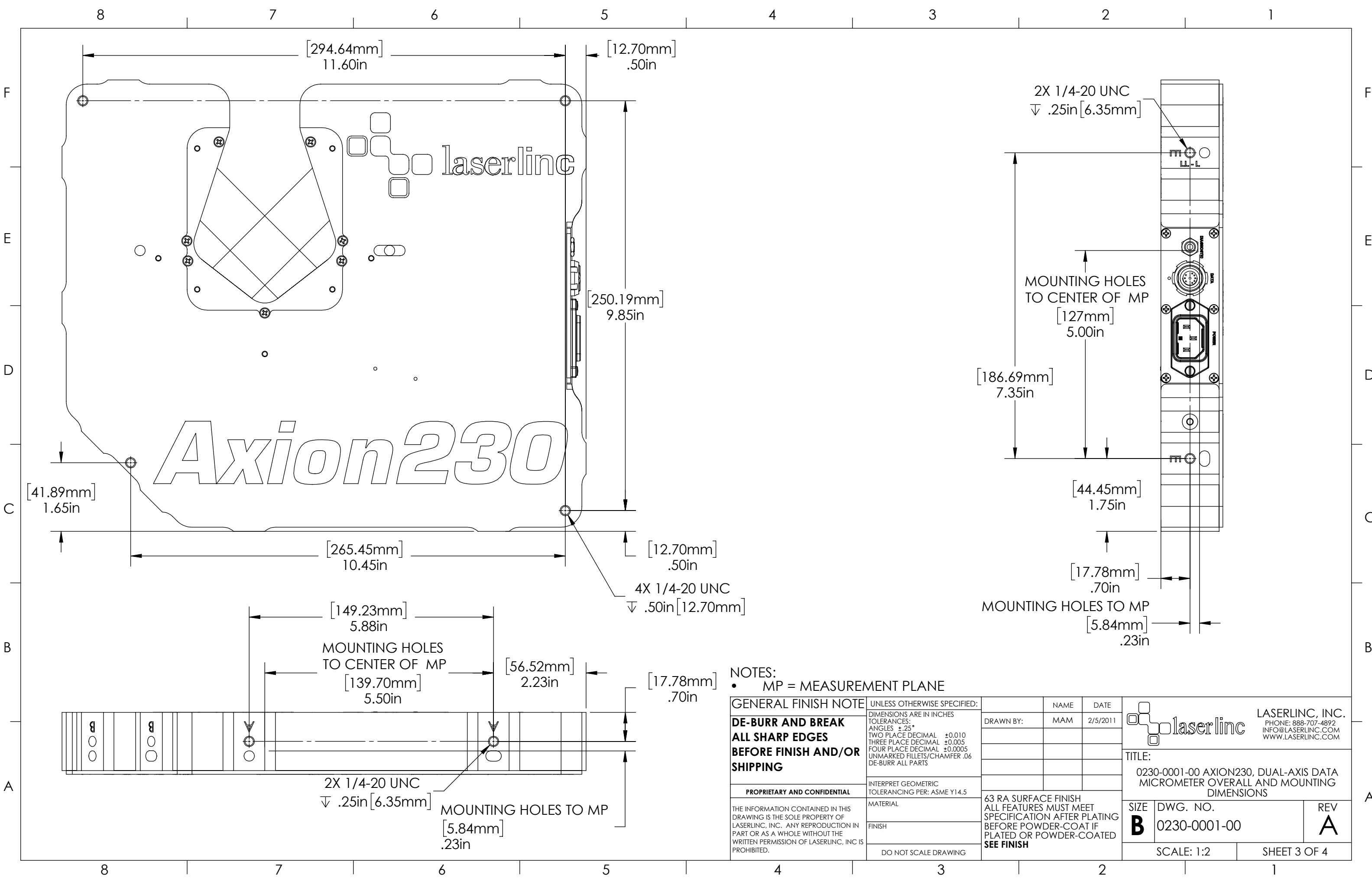
[17.78mm] .70in

NOTES:
• MP = MEASUREMENT PLANE

MOUNTING HOLES TO CENTER OF MP
[86.36mm] 3.40in

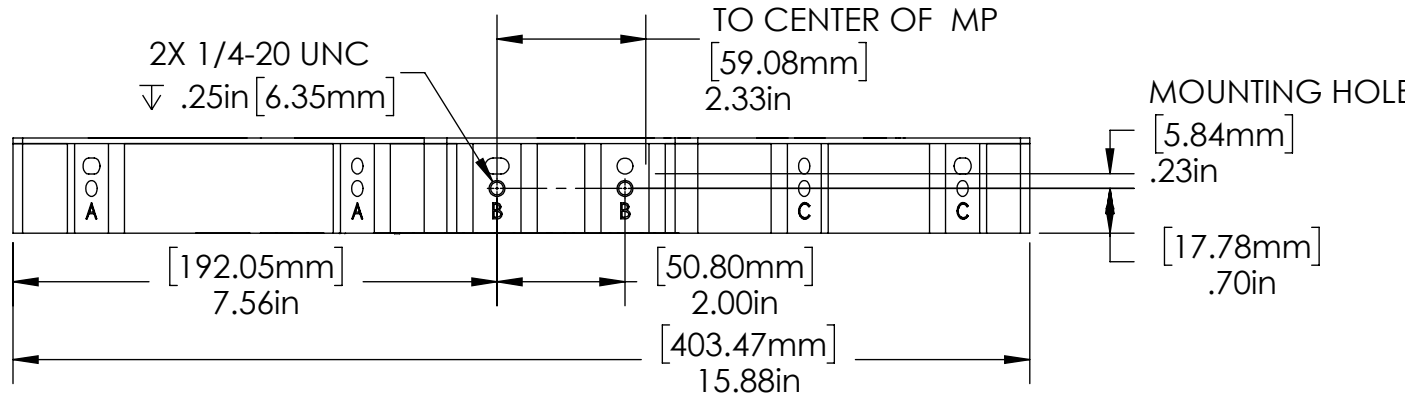
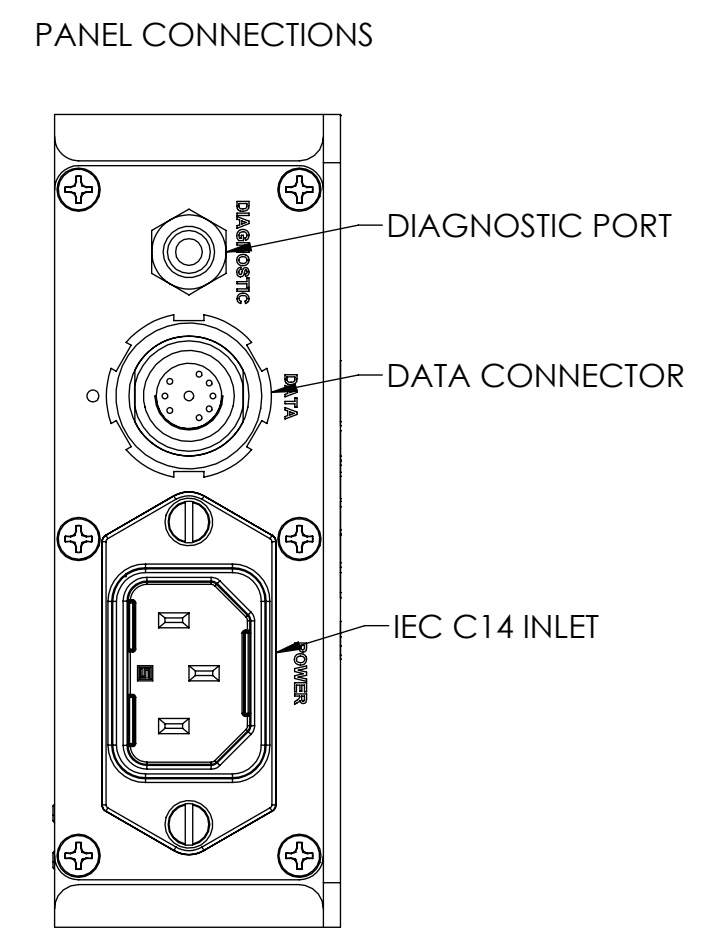
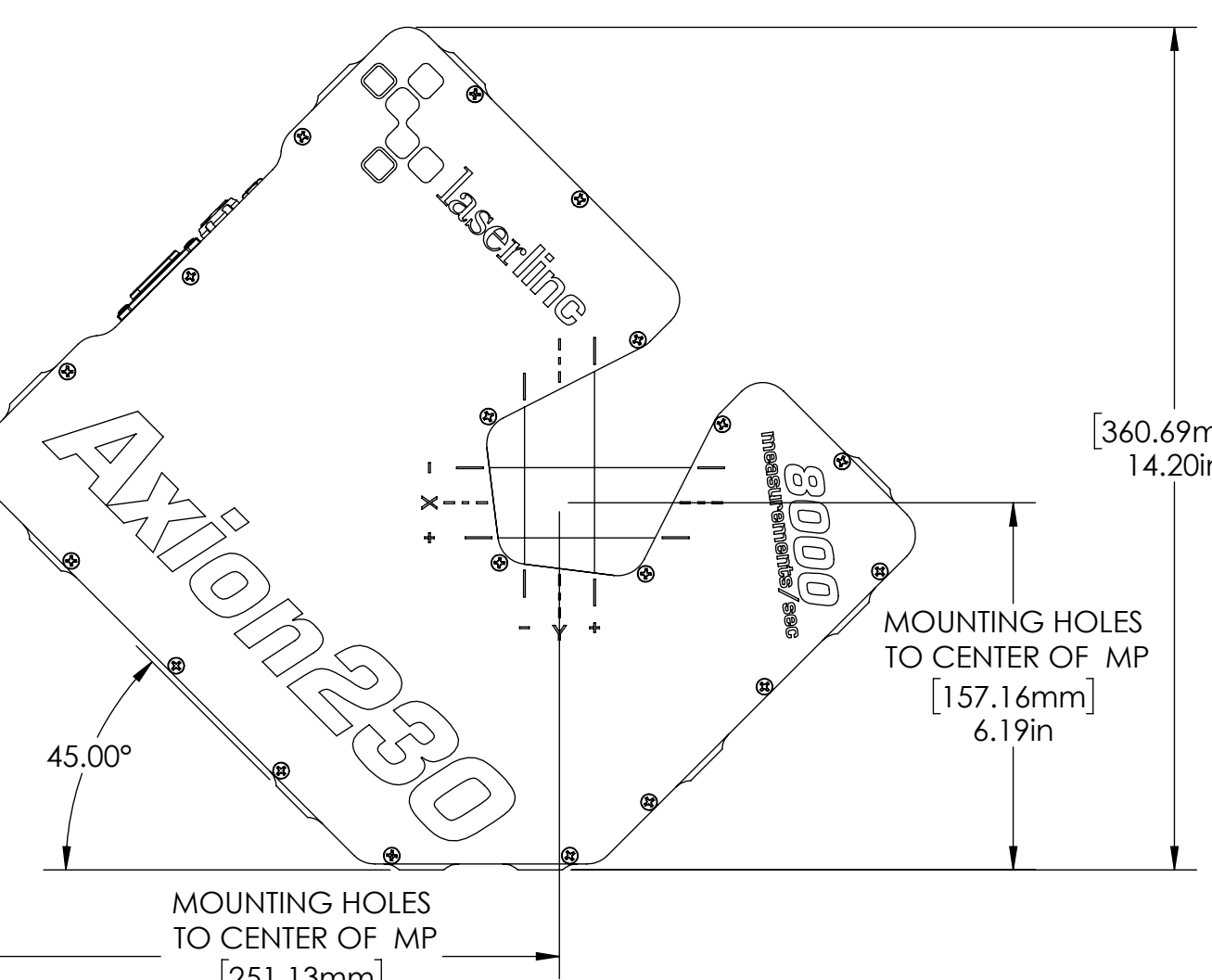
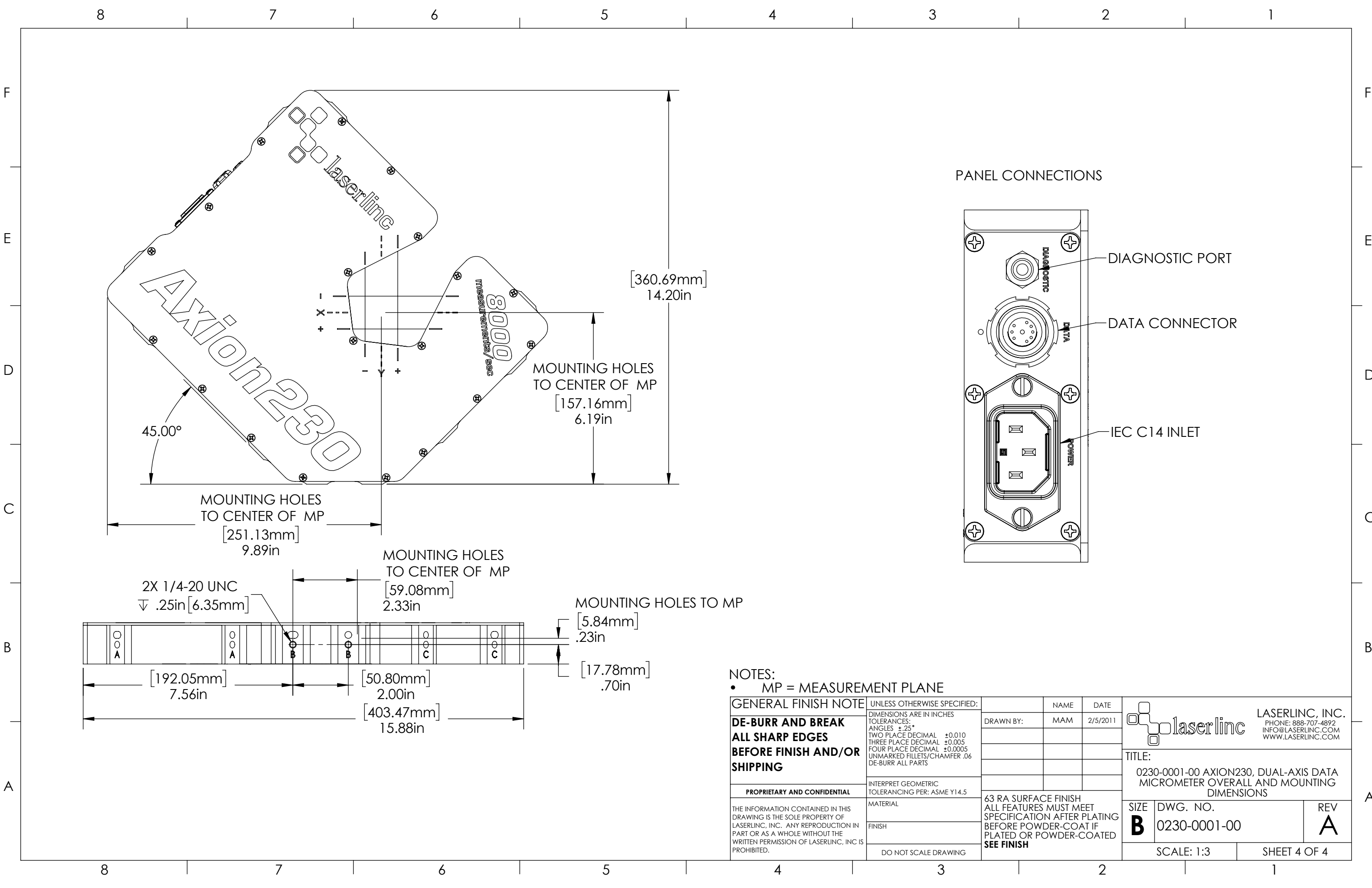
MOUNTING HOLES TO MP
[5.84mm] .23in

GENERAL FINISH NOTE DE-BURR AND BREAK ALL SHARP EDGES BEFORE FINISH AND/OR SHIPPING	UNLESS OTHERWISE SPECIFIED: DIMENSIONS ARE IN INCHES TOLERANCES: ANGLES ±.25 TWO PLACE DECIMAL ±0.010 THREE PLACE DECIMAL ±0.005 FOUR PLACE DECIMAL ±0.0005 UNMARKED FILLETS/CHAMFER .06 DE-BURR ALL PARTS	NAME	DATE	<p>LASERLINC, INC. PHONE: 888-707-4892 INFO@LASERLINC.COM WWW.LASERLINC.COM</p>
	INTERPRET GEOMETRIC TOLERANCING PER: ASME Y14.5	DRAWN BY:	MAM	
PROPRIETARY AND CONFIDENTIAL	MATERIAL	63 RA SURFACE FINISH ALL FEATURES MUST MEET SPECIFICATION AFTER PLATING BEFORE POWDER-COAT IF PLATED OR POWDER-COATED SEE FINISH		TITLE: 0230-0001-00 AXION230, DUAL-AXIS DATA MICROMETER OVERALL AND MOUNTING DIMENSIONS
THE INFORMATION CONTAINED IN THIS DRAWING IS THE SOLE PROPERTY OF LASERLINC, INC. ANY REPRODUCTION IN PART OR AS A WHOLE WITHOUT THE WRITTEN PERMISSION OF LASERLINC, INC. IS PROHIBITED.	FINISH	SIZE	DWG. NO.	REV
DO NOT SCALE DRAWING		B	0230-0001-00	A
		SCALE: 1:2		SHEET 2 OF 4




NOTES:
 • MP = MEASUREMENT PLANE

GENERAL FINISH NOTE DE-BURR AND BREAK ALL SHARP EDGES BEFORE FINISH AND/OR SHIPPING	UNLESS OTHERWISE SPECIFIED: DIMENSIONS ARE IN INCHES TOLERANCES: ANGLES ±.25° TWO PLACE DECIMAL ±0.010 THREE PLACE DECIMAL ±0.005 FOUR PLACE DECIMAL ±0.0005 UNMARKED FILLETS/CHAMFER .06 DE-BURR ALL PARTS	NAME	DATE	 LASERLINC, INC. PHONE: 888-707-4892 INFO@LASERLINC.COM WWW.LASERLINC.COM
	INTERPRET GEOMETRIC TOLERANCING PER: ASME Y14.5	DRAWN BY:	MAM	
PROPRIETARY AND CONFIDENTIAL	MATERIAL	63 RA SURFACE FINISH ALL FEATURES MUST MEET SPECIFICATION AFTER PLATING BEFORE POWDER-COAT IF PLATED OR POWDER-COATED SEE FINISH		TITLE: 0230-0001-00 AXION230, DUAL-AXIS DATA MICROMETER OVERALL AND MOUNTING DIMENSIONS
THE INFORMATION CONTAINED IN THIS DRAWING IS THE SOLE PROPERTY OF LASERLINC, INC. ANY REPRODUCTION IN PART OR AS A WHOLE WITHOUT THE WRITTEN PERMISSION OF LASERLINC, INC. IS PROHIBITED.	FINISH	SIZE	DWG. NO.	REV
DO NOT SCALE DRAWING		B	0230-0001-00	A
		SCALE: 1:2		SHEET 3 OF 4



NOTES:
 • MP = MEASUREMENT PLANE

GENERAL FINISH NOTE		UNLESS OTHERWISE SPECIFIED:		NAME	DATE		
DE-BURR AND BREAK ALL SHARP EDGES BEFORE FINISH AND/OR SHIPPING		DIMENSIONS ARE IN INCHES TOLERANCES: ANGLES $\pm .25^\circ$ TWO PLACE DECIMAL ± 0.010 THREE PLACE DECIMAL ± 0.005 FOUR PLACE DECIMAL ± 0.0005 UNMARKED FILLETS/CHAMFER .06 DE-BURR ALL PARTS		DRAWN BY:	MAM 2/5/2011		
PROPRIETARY AND CONFIDENTIAL		INTERPRET GEOMETRIC TOLERANCING PER: ASME Y14.5		 LASERLINC, INC. PHONE: 888-707-4892 INFO@LASERLINC.COM WWW.LASERLINC.COM			
THE INFORMATION CONTAINED IN THIS DRAWING IS THE SOLE PROPERTY OF LASERLINC, INC. ANY REPRODUCTION IN PART OR AS A WHOLE WITHOUT THE WRITTEN PERMISSION OF LASERLINC, INC. IS PROHIBITED.		MATERIAL				TITLE: 0230-0001-00 AXION230, DUAL-AXIS DATA MICROMETER OVERALL AND MOUNTING DIMENSIONS	
		FINISH				63 RA SURFACE FINISH ALL FEATURES MUST MEET SPECIFICATION AFTER PLATING BEFORE POWDER-COAT IF PLATED OR POWDER-COATED SEE FINISH	
		DO NOT SCALE DRAWING		SIZE	DWG. NO.		
				B	0230-0001-00		
				REV	A		
				SCALE: 1:3	SHEET 4 OF 4		