

8

7

6

5

4

3

2

1

F

E

D

C

B

A

F

E

D

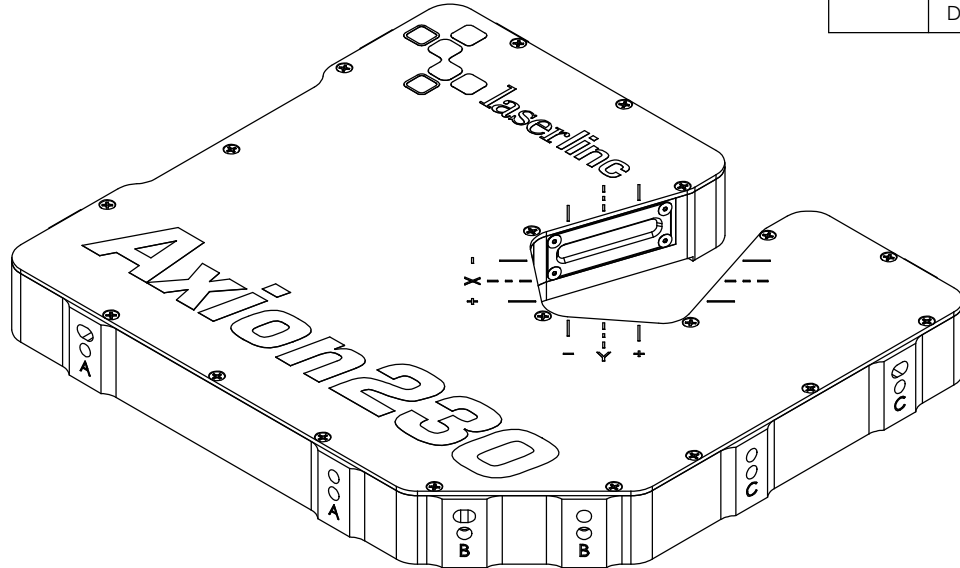
C

B

A

INDEX

- (1) COVER PAGE
- (2) BOM TABLE
- (3) MOUNT BOARDS
- (4) MOUNT LASER & FANS
- (5) MOUNT WINDOWS
- (6) OVERVIEW
- (7) MOUNT COVER
- (8) DIMENSIONS 1
- (9) DIMENSIONS 2
- (10) DIMENSIONS 3



REVISIONS

ZONE	REV.	DESCRIPTION	DATE	APPROVED
	A	CHECK-IN	2/4/2011	MAM
	B	ADDED SHEET 2	4/27/2012	MAM
	C	CHANGED SET SCREWS TO FOAM TAPE ON LENS HOLDER	4/8/2021	TRA
	D	ADDED NIDEC MOTOR	6/29/2023	EMM

AXION230, DUAL-AXIS NETLINC MICROMETER

GENERAL FINISH NOTE		UNLESS OTHERWISE SPECIFIED:		NAME	DATE												
DE-BURR AND BREAK ALL SHARP EDGES BEFORE FINISH AND/OR SHIPPING		DIMENSIONS ARE IN INCHES TOLERANCES: ANGLES $\pm 25^\circ$ TWO PLACE DECIMAL ± 0.010 THREE PLACE DECIMAL ± 0.005 FOUR PLACE DECIMAL ± 0.0005 UNMARKED RILLETS/CHAMFER .06 DE-BURR ALL PARTS		DRAWN BY:	EMM 08/20/2021												
PROPRIETARY AND CONFIDENTIAL		INTERPRET GEOMETRIC TOLERANCING PER: ASME Y14.5															
THE INFORMATION CONTAINED IN THIS DRAWING IS THE SOLE PROPERTY OF LASERLINC, INC. ANY REPRODUCTION IN PART OR AS A WHOLE WITHOUT THE WRITTEN PERMISSION OF LASERLINC, INC IS PROHIBITED.		MATERIAL		63 RA SURFACE FINISH ALL FEATURES MUST MEET SPECIFICATION AFTER PLATING BEFORE POWDER-COAT IF PLATED OR POWDER-COATED SEE FINISH													
		FINISH		SCALE: 1:2													
		DO NOT SCALE DRAWING		SHEET 1 OF 9													
<table border="1" style="width: 100%;"> <tr> <td colspan="2" style="text-align: center;">laserline</td> <td colspan="2" style="text-align: right;">LASERLINC, INC. PHONE: 937-318-2440 INFO@LASERLINC.COM WWW.LASERLINC.COM</td> </tr> <tr> <td colspan="4">TITLE: AXION230, DUAL-AXIS NETLINC MICROMETER</td> </tr> <tr> <td>SIZE B</td> <td>DWG. NO. 0230-0002-00</td> <td>REV D</td> <td></td> </tr> </table>						laserline		LASERLINC, INC. PHONE: 937-318-2440 INFO@LASERLINC.COM WWW.LASERLINC.COM		TITLE: AXION230, DUAL-AXIS NETLINC MICROMETER				SIZE B	DWG. NO. 0230-0002-00	REV D	
laserline		LASERLINC, INC. PHONE: 937-318-2440 INFO@LASERLINC.COM WWW.LASERLINC.COM															
TITLE: AXION230, DUAL-AXIS NETLINC MICROMETER																	
SIZE B	DWG. NO. 0230-0002-00	REV D															

8

7

6

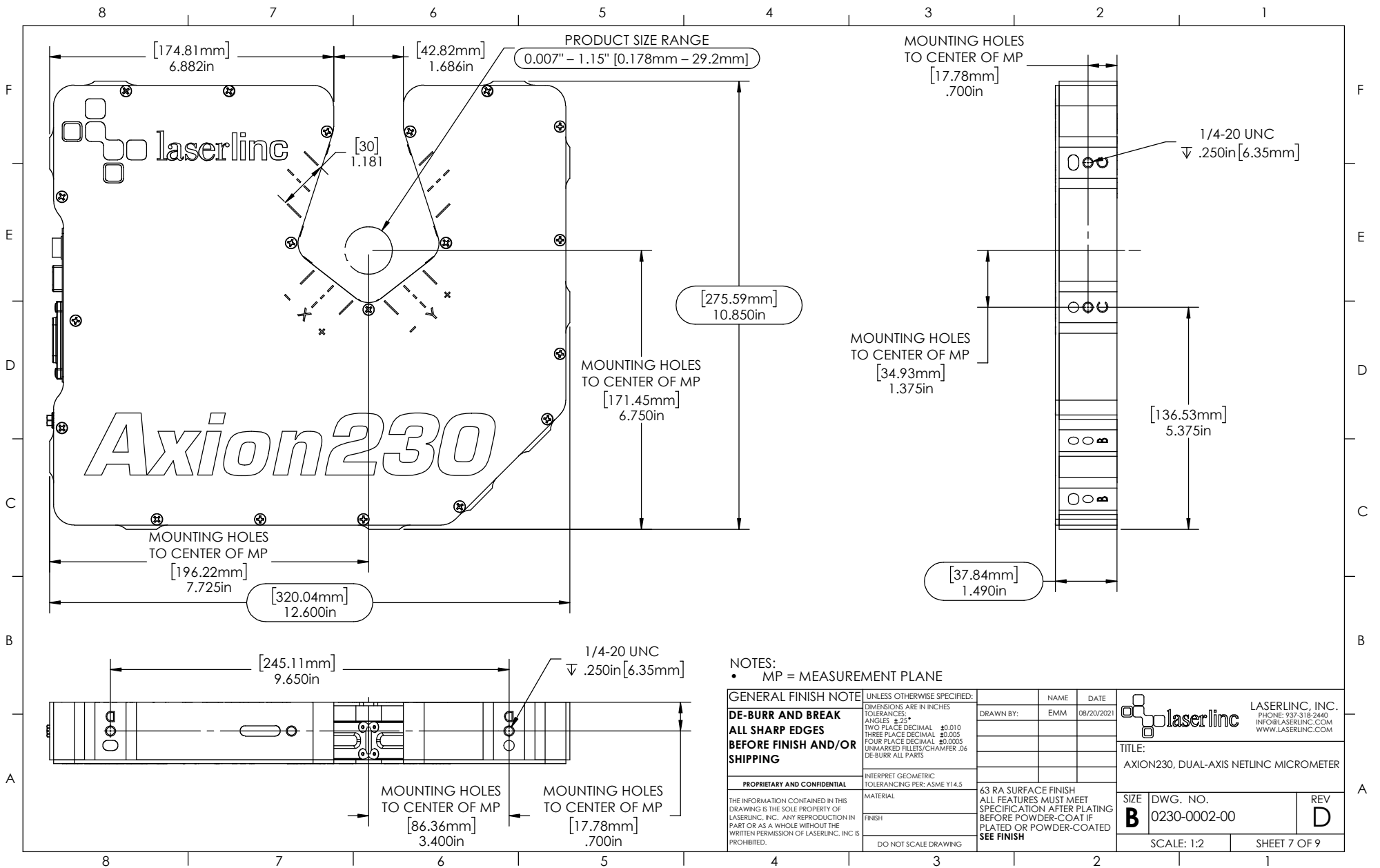
5

4


3

2

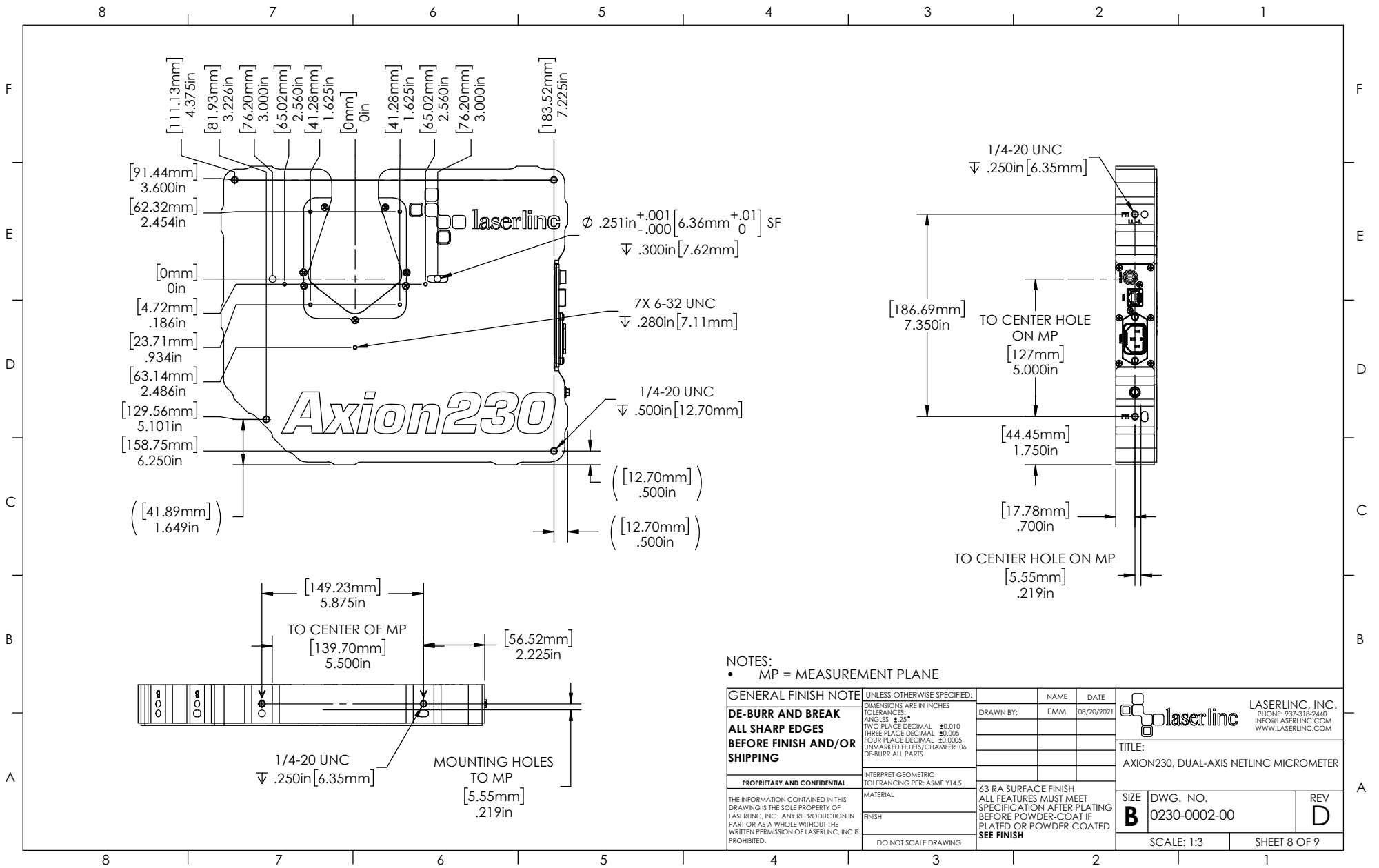
1



NOTES:
 • MP = MEASUREMENT PLANE

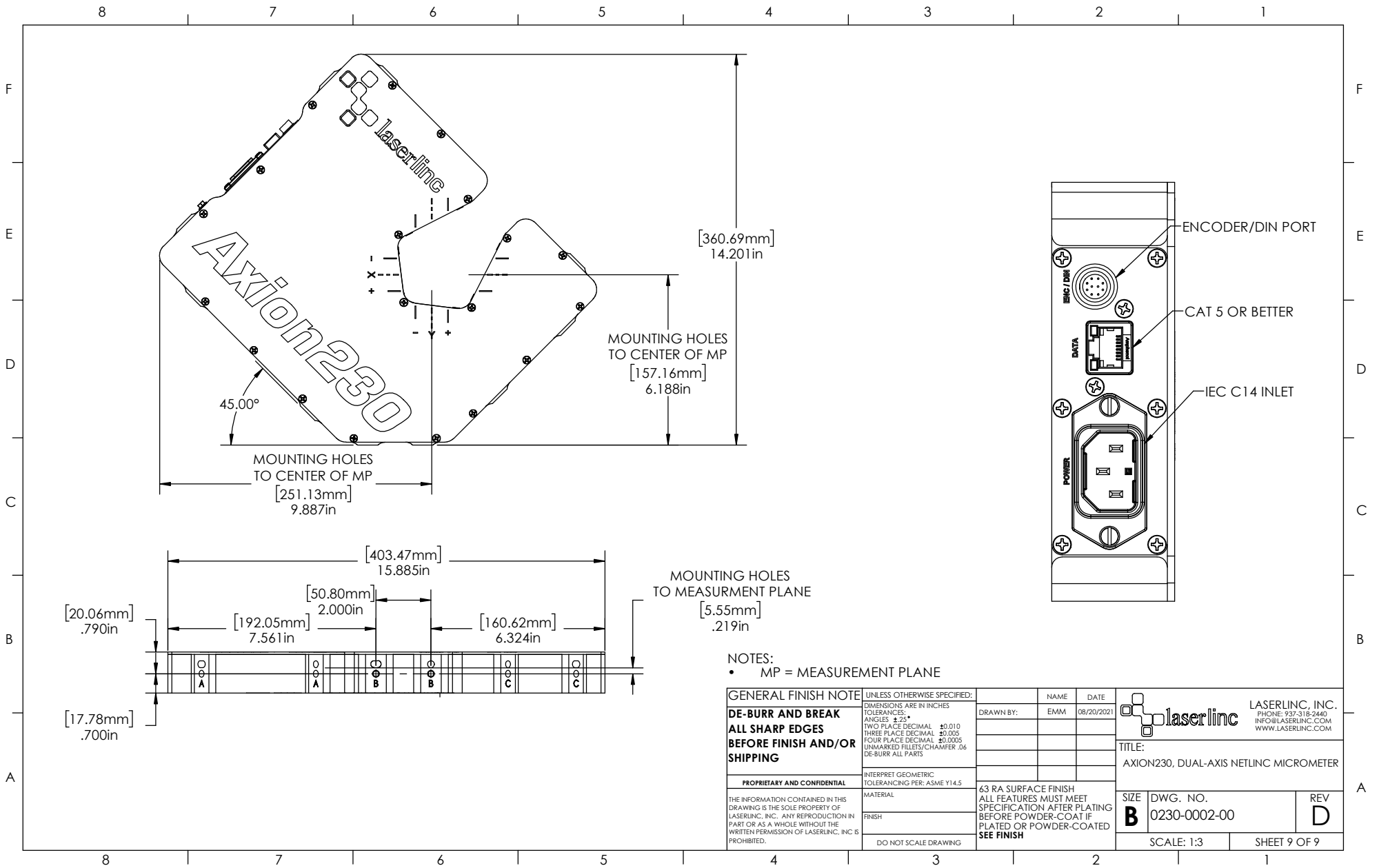
GENERAL FINISH NOTE DE-BURR AND BREAK ALL SHARP EDGES BEFORE FINISH AND/OR SHIPPING	UNLESS OTHERWISE SPECIFIED: DIMENSIONS ARE IN INCHES TOLERANCES: ANGLES $\pm 25^\circ$ TWO PLACE DECIMAL ± 0.010 THREE PLACE DECIMAL ± 0.005 FOUR PLACE DECIMAL ± 0.0005 UNMARKED FILLETS/CHAMFER .06 DE-BURR ALL PARTS	NAME DATE	 LASERLINC, INC. PHONE: 937-318-2440 INFO@LASERLINC.COM WWW.LASERLINC.COM
	INTERPRET GEOMETRIC TOLERANCING PER: ASME Y14.5	DRAWN BY: EMM 08/21/2021	
PROPRIETARY AND CONFIDENTIAL THE INFORMATION CONTAINED IN THIS DRAWING IS THE SOLE PROPERTY OF LASERLINC, INC. ANY REPRODUCTION IN PART OR AS A WHOLE WITHOUT THE WRITTEN PERMISSION OF LASERLINC, INC IS PROHIBITED.	MATERIAL FINISH DO NOT SCALE DRAWING	63 RA SURFACE FINISH ALL FEATURES MUST MEET SPECIFICATION AFTER PLATING BEFORE POWDER-COAT IF PLATED OR POWDER-COATED SEE FINISH	SIZE B DWG. NO. 0230-0002-00 REV D

SCALE: 1:2 SHEET 7 OF 9



NOTES:
 • MP = MEASUREMENT PLANE

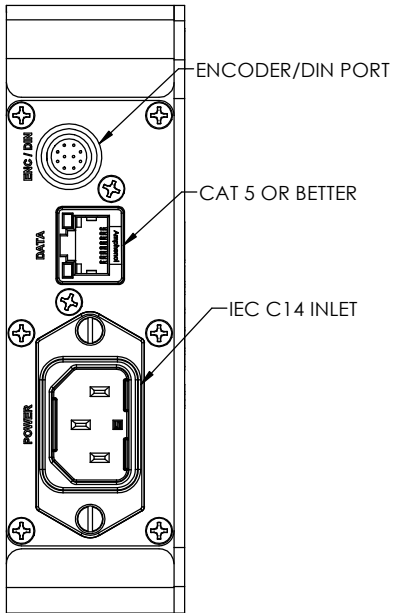
GENERAL FINISH NOTE DE-BURR AND BREAK ALL SHARP EDGES BEFORE FINISH AND/OR SHIPPING	UNLESS OTHERWISE SPECIFIED: DIMENSIONS ARE IN INCHES TOLERANCES: ANGLES $\pm .25^\circ$ TWO PLACE DECIMAL ± 0.010 THREE PLACE DECIMAL ± 0.005 FOUR PLACE DECIMAL ± 0.0005 UNMARKED FILLETS/CHAMFER .06 DE-BURR ALL PARTS	NAME DATE			LASERLINC, INC. PHONE: 937-318-2440 INFO@LASERLINC.COM WWW.LASERLINC.COM	
	INTERPRET GEOMETRIC TOLERANCING PER: ASME Y14.5	DRAWN BY: EMM 08/20/2021	TITLE: AXION230, DUAL-AXIS NETLINC MICROMETER			
PROPRIETARY AND CONFIDENTIAL THE INFORMATION CONTAINED IN THIS DRAWING IS THE SOLE PROPERTY OF LASERLINC, INC. ANY REPRODUCTION IN PART OR AS A WHOLE WITHOUT THE WRITTEN PERMISSION OF LASERLINC, INC IS PROHIBITED.	MATERIAL FINISH DO NOT SCALE DRAWING	.63 RA SURFACE FINISH ALL FEATURES MUST MEET SPECIFICATION AFTER PLATING BEFORE POWDER-COAT IF PLATED OR POWDER-COATED SEE FINISH		SIZE B	DWG. NO. 0230-0002-00	REV D
		SCALE: 1:3		SHEET 8 OF 9		



MOUNTING HOLES TO CENTER OF MP
[157.16mm]
6.188in

MOUNTING HOLES TO CENTER OF MP
[251.13mm]
9.887in

MOUNTING HOLES TO MEASUREMENT PLANE
[5.55mm]
.219in



NOTES:
• MP = MEASUREMENT PLANE

GENERAL FINISH NOTE		UNLESS OTHERWISE SPECIFIED:		NAME	DATE
DE-BURR AND BREAK ALL SHARP EDGES BEFORE FINISH AND/OR SHIPPING		DIMENSIONS ARE IN INCHES TOLERANCES ANGLES ±.25° TWO PLACE DECIMAL ±0.010 THREE PLACE DECIMAL ±0.005 FOUR PLACE DECIMAL ±0.0005 UNMARKED FILLETS/CHAMFER .06 DE-BURR ALL PARTS		DRAWN BY:	EMM 08/20/2021
PROPRIETARY AND CONFIDENTIAL		INTERPRET GEOMETRIC TOLERANCING PER: ASME Y14.5			
THE INFORMATION CONTAINED IN THIS DRAWING IS THE SOLE PROPERTY OF LASERLINC, INC. ANY REPRODUCTION IN PART OR AS A WHOLE WITHOUT THE WRITTEN PERMISSION OF LASERLINC, INC IS PROHIBITED.		MATERIAL		63 RA SURFACE FINISH ALL FEATURES MUST MEET SPECIFICATION AFTER PLATING BEFORE POWDER-COAT IF PLATED OR POWDER-COATED SEE FINISH	
		FINISH		SIZE B DWG. NO. 0230-0002-00 REV D	
		DO NOT SCALE DRAWING		SCALE: 1:3 SHEET 9 OF 9	

laserlinc LASERLINC, INC.
PHONE: 937-318-2440
INFO@LASERLINC.COM
WWW.LASERLINC.COM

TITLE:
AXION230, DUAL-AXIS NETLINC MICROMETER