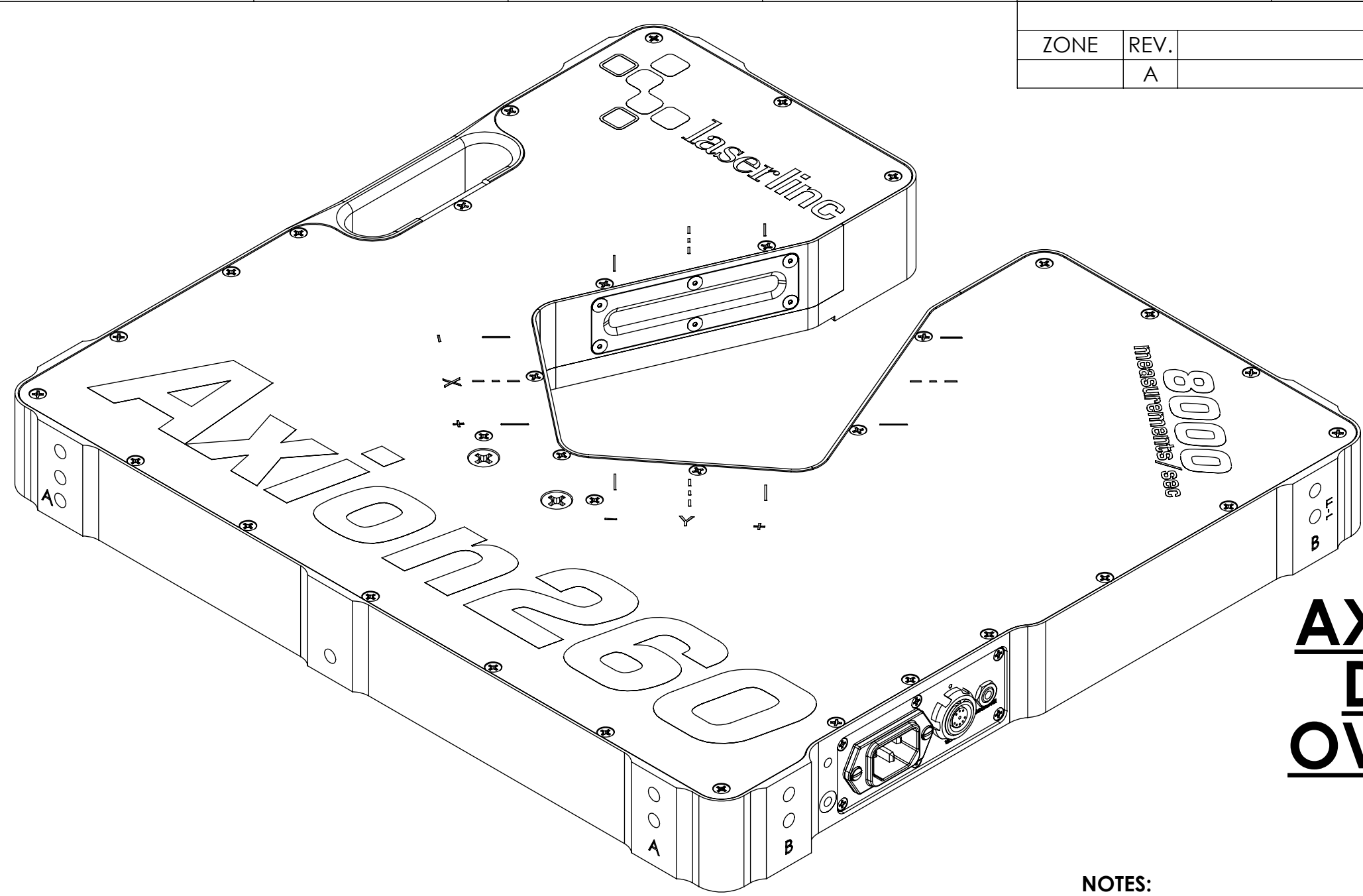


REVISIONS

ZONE	REV.	DESCRIPTION	DATE	APPROVED
	A	CHECK-IN	6/16/2011	MAM



0260-0001-00 AXION260, DUAL-AXIS DATA MICROMETER OVERALL & MOUNTING DIMENSIONS

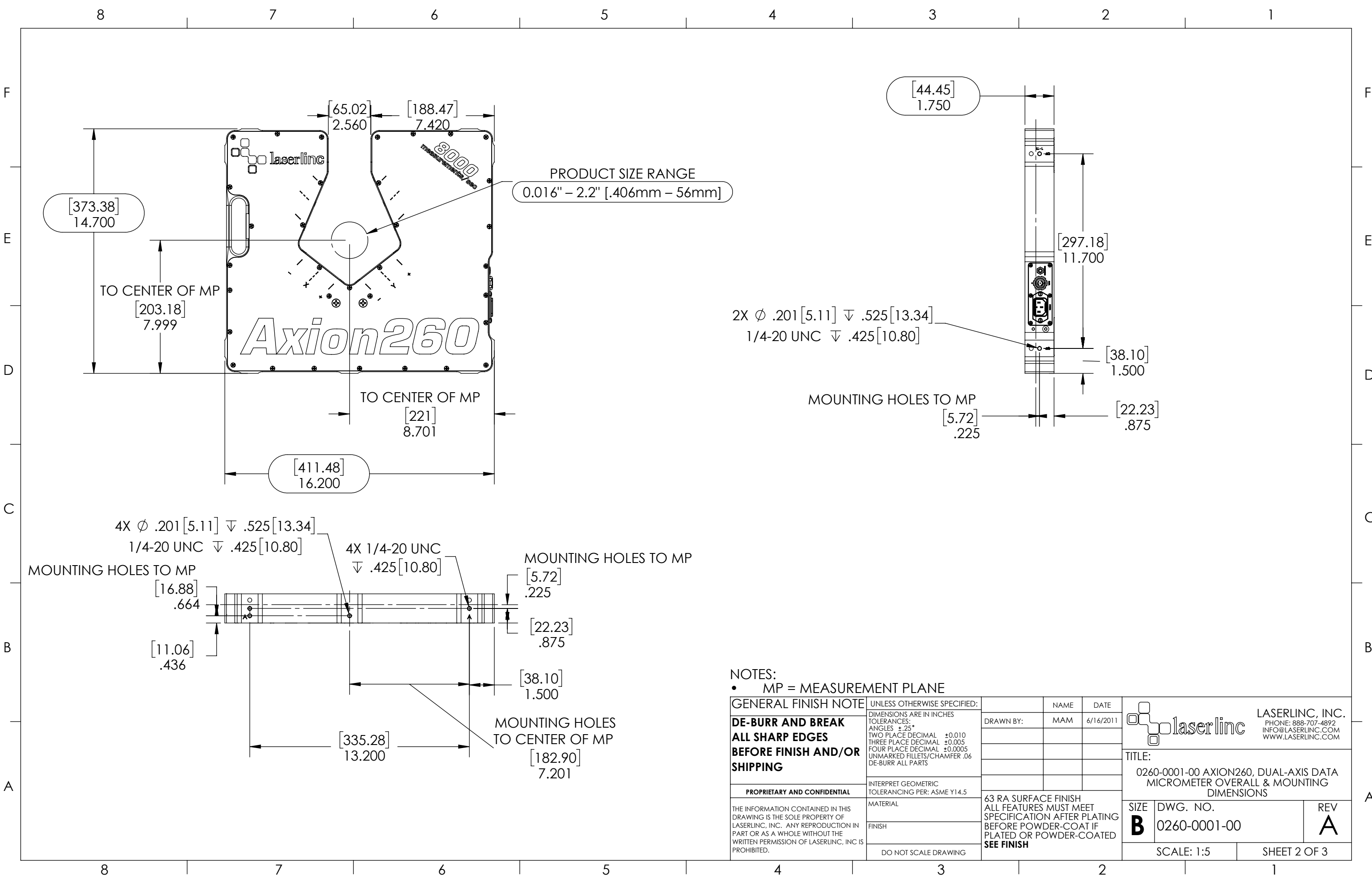
NOTES:

- APPROX. WEIGHT: 21 LBS [9.5 KG]
- POWER REQUIREMENTS: 100-240 VAC 50/60 Hz 50 W MAX.
- MEASUREMENTS PER SECOND (Hz): 3200 [1600 PER AXIS] 8000 [4000 PER AXIS] (OPTIONAL)
- RESOLUTION: .000001" [.025µm]
- REPEATABILITY² UN-AVERAGED: ±.0011" [±28µm]
- REPEATABILITY² TWO SECOND: ±.00001" [±.25µm]

INDEX

(1)	COVER PAGE
(2)	DIMENSIONS 1
(3)	DIMENSIONS 2

GENERAL FINISH NOTE		UNLESS OTHERWISE SPECIFIED:		NAME	DATE		
DE-BURR AND BREAK ALL SHARP EDGES BEFORE FINISH AND/OR SHIPPING		DIMENSIONS ARE IN INCHES TOLERANCES: ANGLES ±.25 TWO PLACE DECIMAL ±0.010 THREE PLACE DECIMAL ±0.005 FOUR PLACE DECIMAL ±0.0005 UNMARKED FILLETS/CHAMFER .06 DE-BURR ALL PARTS		DRAWN BY:	MAM 6/16/2011		
PROPRIETARY AND CONFIDENTIAL		INTERPRET GEOMETRIC TOLERANCING PER: ASME Y14.5		LASERLINC, INC. PHONE: 888-707-4892 INFO@LASERLINC.COM WWW.LASERLINC.COM			
THE INFORMATION CONTAINED IN THIS DRAWING IS THE SOLE PROPERTY OF LASERLINC, INC. ANY REPRODUCTION IN PART OR AS A WHOLE WITHOUT THE WRITTEN PERMISSION OF LASERLINC, INC. IS PROHIBITED.		MATERIAL				TITLE: 0260-0001-00 AXION260, DUAL-AXIS DATA MICROMETER OVERALL & MOUNTING DIMENSIONS	
		FINISH					
		DO NOT SCALE DRAWING		63 RA SURFACE FINISH ALL FEATURES MUST MEET SPECIFICATION AFTER PLATING BEFORE POWDER-COAT IF PLATED OR POWDER-COATED SEE FINISH		SCALE: 1:2	SHEET 1 OF 3



PRODUCT SIZE RANGE
0.016" - 2.2" [.406mm - 56mm]

2X ϕ .201 [5.11] ∇ .525 [13.34]
1/4-20 UNC ∇ .425 [10.80]

MOUNTING HOLES TO MP
[5.72] .225 [22.23] .875

4X ϕ .201 [5.11] ∇ .525 [13.34]
1/4-20 UNC ∇ .425 [10.80]

4X 1/4-20 UNC ∇ .425 [10.80]


MOUNTING HOLES TO MP [5.72] .225

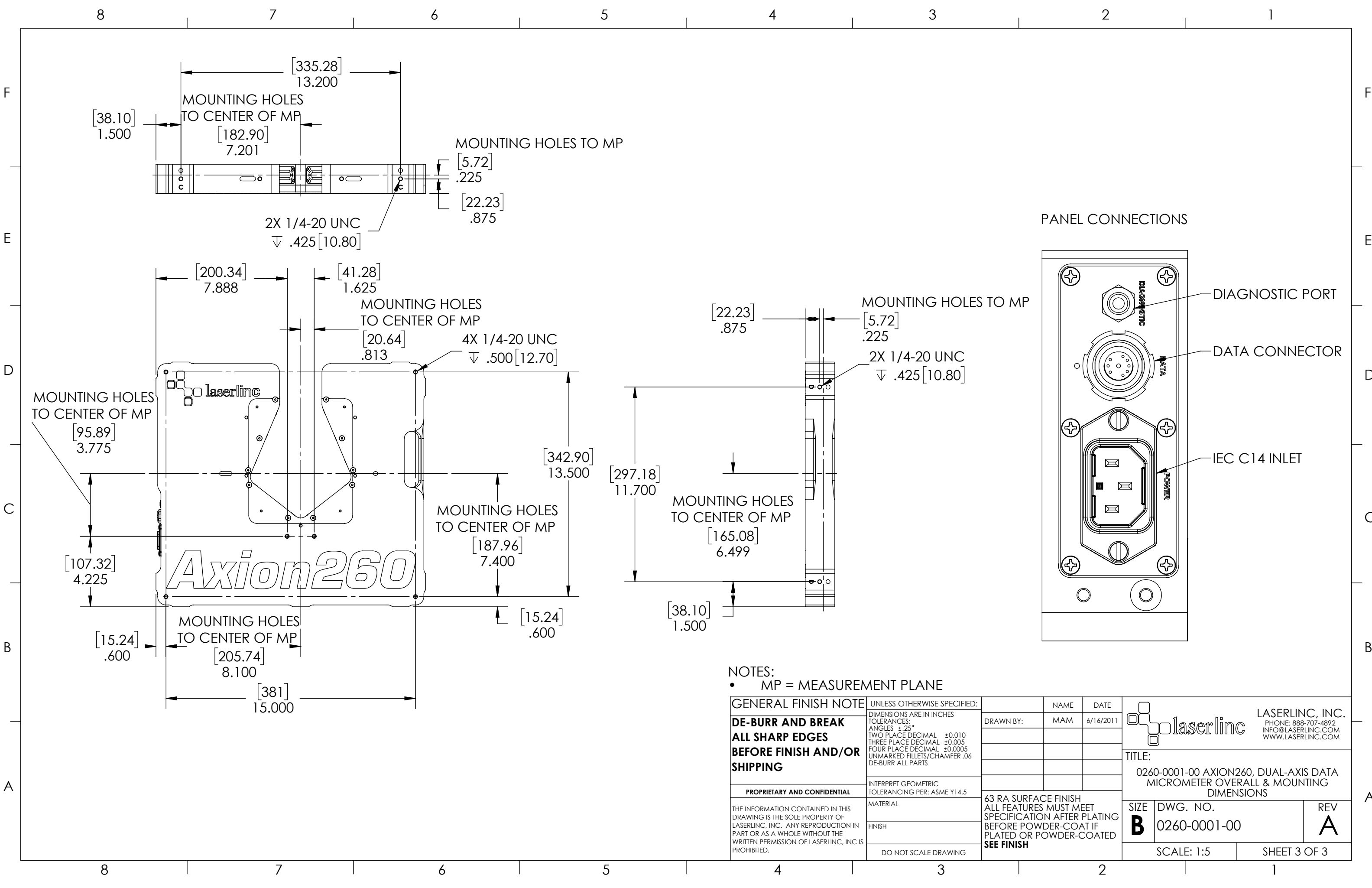
MOUNTING HOLES TO MP [22.23] .875

MOUNTING HOLES TO CENTER OF MP [182.90] 7.201

MOUNTING HOLES TO MP [335.28] 13.200

NOTES:
• MP = MEASUREMENT PLANE

GENERAL FINISH NOTE		UNLESS OTHERWISE SPECIFIED:		NAME	DATE		
DE-BURR AND BREAK ALL SHARP EDGES BEFORE FINISH AND/OR SHIPPING		DIMENSIONS ARE IN INCHES TOLERANCES: ANGLES \pm .25 TWO PLACE DECIMAL \pm 0.010 THREE PLACE DECIMAL \pm 0.005 FOUR PLACE DECIMAL \pm 0.0005 UNMARKED FILLETS/CHAMFER .06 DE-BURR ALL PARTS		DRAWN BY:	MAM 6/16/2011		
PROPRIETARY AND CONFIDENTIAL		INTERPRET GEOMETRIC TOLERANCING PER: ASME Y14.5		 LASERLINC, INC. PHONE: 888-707-4892 INFO@LASERLINC.COM WWW.LASERLINC.COM			
THE INFORMATION CONTAINED IN THIS DRAWING IS THE SOLE PROPERTY OF LASERLINC, INC. ANY REPRODUCTION IN PART OR AS A WHOLE WITHOUT THE WRITTEN PERMISSION OF LASERLINC, INC. IS PROHIBITED.		MATERIAL				TITLE: 0260-0001-00 AXION260, DUAL-AXIS DATA MICROMETER OVERALL & MOUNTING DIMENSIONS	
		FINISH				63 RA SURFACE FINISH ALL FEATURES MUST MEET SPECIFICATION AFTER PLATING BEFORE POWDER-COAT IF PLATED OR POWDER-COATED SEE FINISH	
		DO NOT SCALE DRAWING		SIZE	DWG. NO.		
				B	0260-0001-00		
				REV	A		
				SCALE: 1:5 SHEET 2 OF 3			



NOTES:
 • MP = MEASUREMENT PLANE

GENERAL FINISH NOTE DE-BURR AND BREAK ALL SHARP EDGES BEFORE FINISH AND/OR SHIPPING	UNLESS OTHERWISE SPECIFIED: DIMENSIONS ARE IN INCHES TOLERANCES: ANGLES ±.25 TWO PLACE DECIMAL ±0.010 THREE PLACE DECIMAL ±0.005 FOUR PLACE DECIMAL ±0.0005 UNMARKED FILLETS/CHAMFER .06 DE-BURR ALL PARTS	NAME MAM	DATE 6/16/2011		LASERLINC, INC. PHONE: 888-707-4892 INFO@LASERLINC.COM WWW.LASERLINC.COM
	PROPRIETARY AND CONFIDENTIAL THE INFORMATION CONTAINED IN THIS DRAWING IS THE SOLE PROPERTY OF LASERLINC, INC. ANY REPRODUCTION IN PART OR AS A WHOLE WITHOUT THE WRITTEN PERMISSION OF LASERLINC, INC. IS PROHIBITED.	INTERPRET GEOMETRIC TOLERANCING PER: ASME Y14.5	DRAWN BY:		
MATERIAL FINISH DO NOT SCALE DRAWING	63 RA SURFACE FINISH ALL FEATURES MUST MEET SPECIFICATION AFTER PLATING BEFORE POWDER-COAT IF PLATED OR POWDER-COATED SEE FINISH	SIZE B	DWG. NO. 0260-0001-00	REV A	SCALE: 1:5 SHEET 3 OF 3