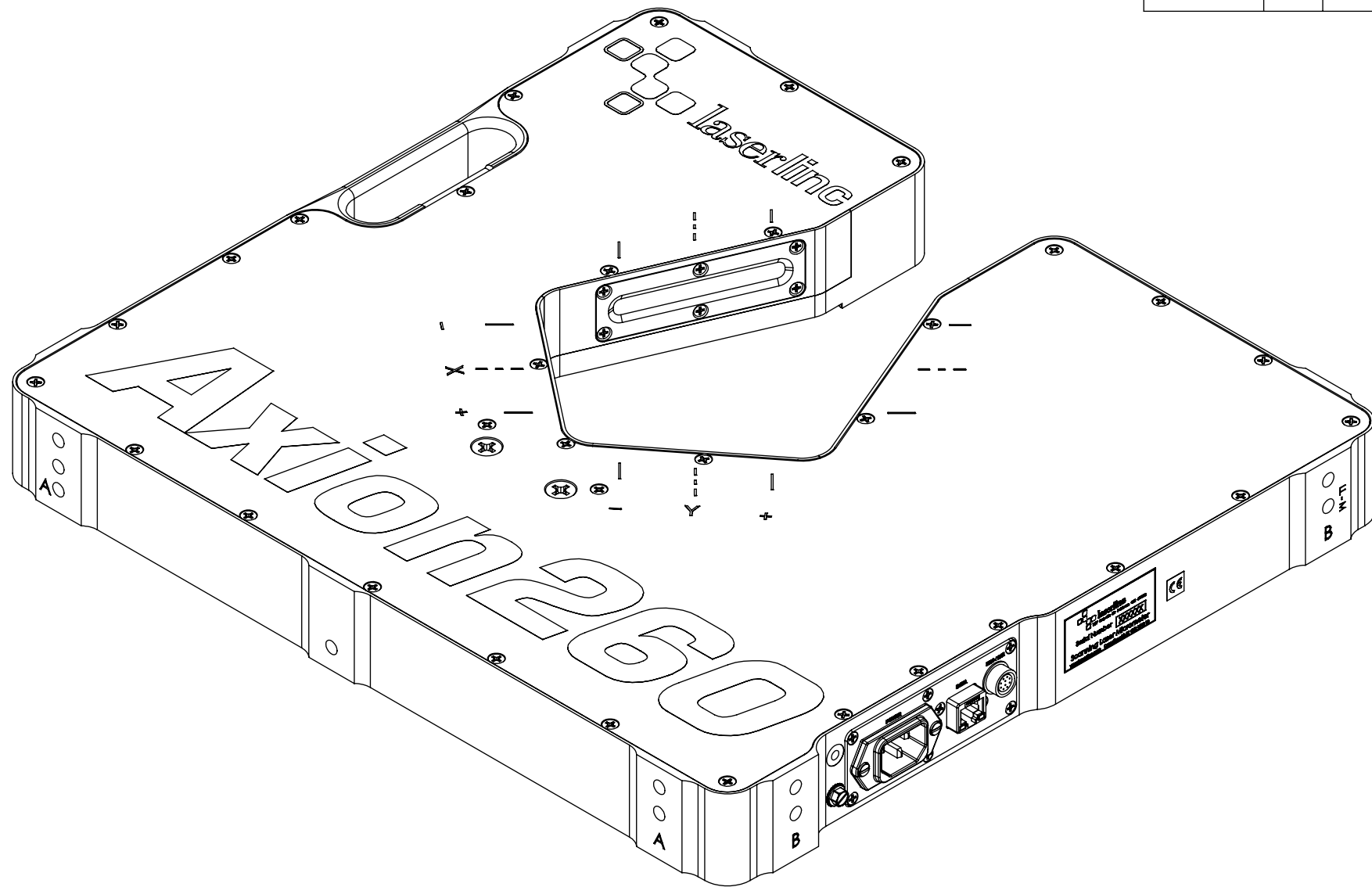


REVISIONS				
ZONE	REV.	DESCRIPTION	DATE	APPROVED
	C	ADDED PART LOCATIONS	5/2/2012	MAM
	D	DESOLVED THE PD, RESET, AND FAN SUB-ASSEMBLY	7/11/2022	MAM
	E	CHANGED MOTOR	9/14/2023	EMM
	F	CHANGED THE METHOD WE BUILD THE MICROMETER TO MATCH THE PRECESS AND ADDED THE STICKER PLACEMENT	5/30/2024	MAM



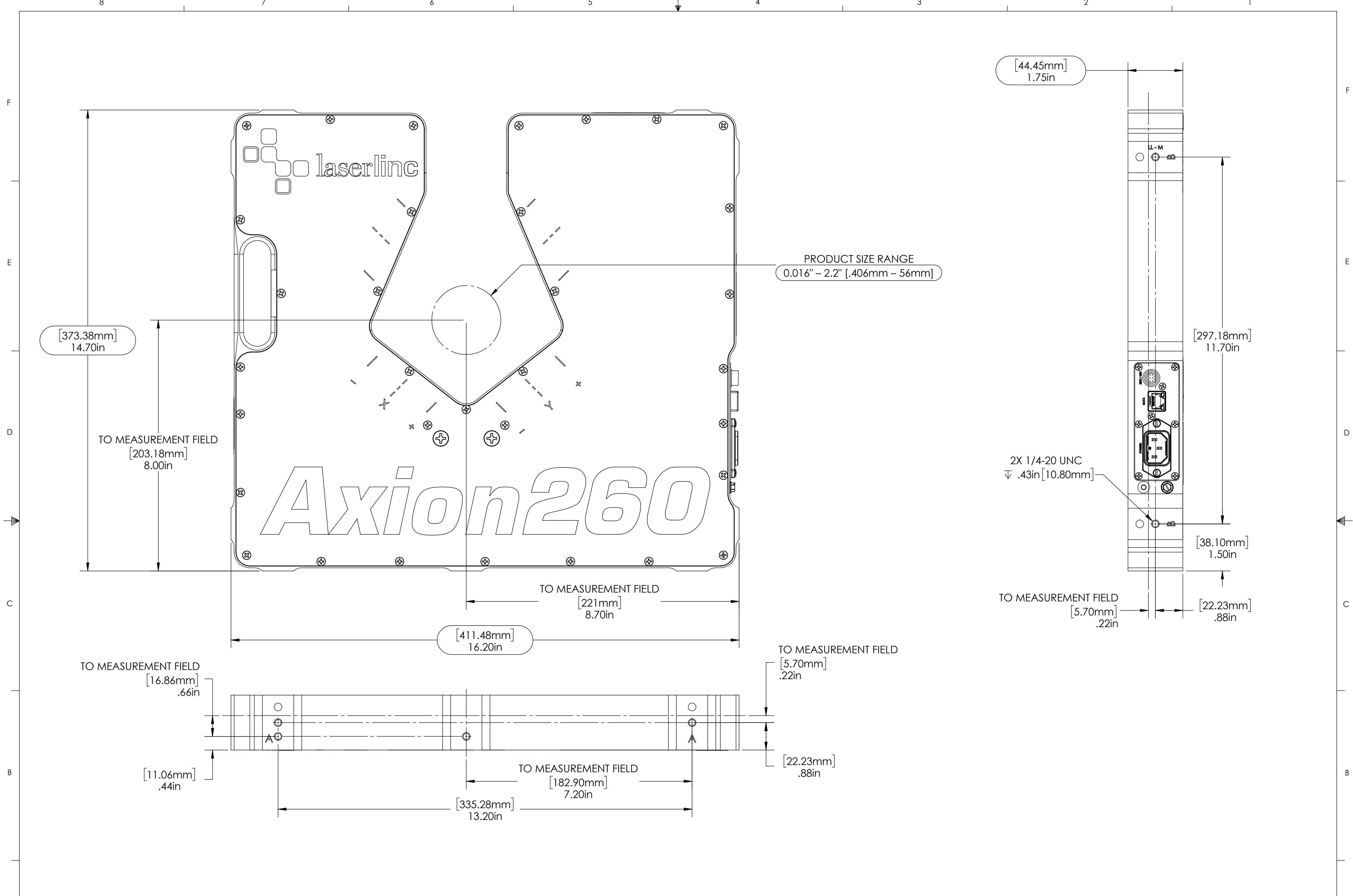
AXION260, DUAL-AXIS NETLINC MICROMETER

INDEX

- (1) COVER PAGE
- (2) BOM TABLE
- (3) MOUNT BOARDS
- (4) MOUNT LASERS
- (5) WIRE MANAGEMENT
- (6) LENS & MIRRORS
- (7) MOUNT GLASS
- (8) OVERVIEW
- (9) MOUNT COVER
- (10) OVERALLS 1
- (11) OVERALLS 2

GENERAL FINISH NOTE		UNLESS OTHERWISE SPECIFIED:		NAME	DATE
DE-BURR AND BREAK ALL SHARP EDGES BEFORE FINISH AND/OR SHIPPING		DIMENSIONS ARE IN INCHES TOLERANCES: ANGLES ±.25° TWO PLACE DECIMAL ±0.010 THREE PLACE DECIMAL ±0.005 FOUR PLACE DECIMAL ±0.0005 UNMARKED FILLETS/CHAMFER .06 DE-BURR ALL PARTS		DRAWN BY:	EMM 08/13/2021
PROPRIETARY AND CONFIDENTIAL		INTERPRET GEOMETRIC TOLERANCING PER: ASME Y14.5			
THE INFORMATION CONTAINED IN THIS DRAWING IS THE SOLE PROPERTY OF LASERLINC, INC. ANY REPRODUCTION IN PART OR AS A WHOLE WITHOUT THE WRITTEN PERMISSION OF LASERLINC, INC. IS PROHIBITED.		MATERIAL		63 RA SURFACE FINISH ALL FEATURES MUST MEET SPECIFICATION AFTER PLATING BEFORE POWDER-COAT IF PLATED OR POWDER-COATED SEE FINISH	
		FINISH		TITLE: AXION260, DUAL-AXIS NETLINC MICROMETER	
		DO NOT SCALE DRAWING		SIZE	DWG. NO.
				B	0260-0002-00
				REV	F
				SCALE: 3:7	SHEET 1 OF 8





PRODUCT SIZE RANGE
0.016" - 2.2" [.406mm - 56mm]

[373.38mm]
14.70in

TO MEASUREMENT FIELD
[203.18mm]
8.00in

TO MEASUREMENT FIELD
[221mm]
8.70in

[411.48mm]
16.20in

TO MEASUREMENT FIELD
[16.86mm]
.66in

[11.06mm]
.44in

TO MEASUREMENT FIELD
[182.90mm]
7.20in

[335.28mm]
13.20in

TO MEASUREMENT FIELD
[5.70mm]
.22in

[22.23mm]
.88in

[44.45mm]
1.75in

[297.18mm]
11.70in

2X 1/4-20 UNC
▽ .43in [10.80mm]

[38.10mm]
1.50in

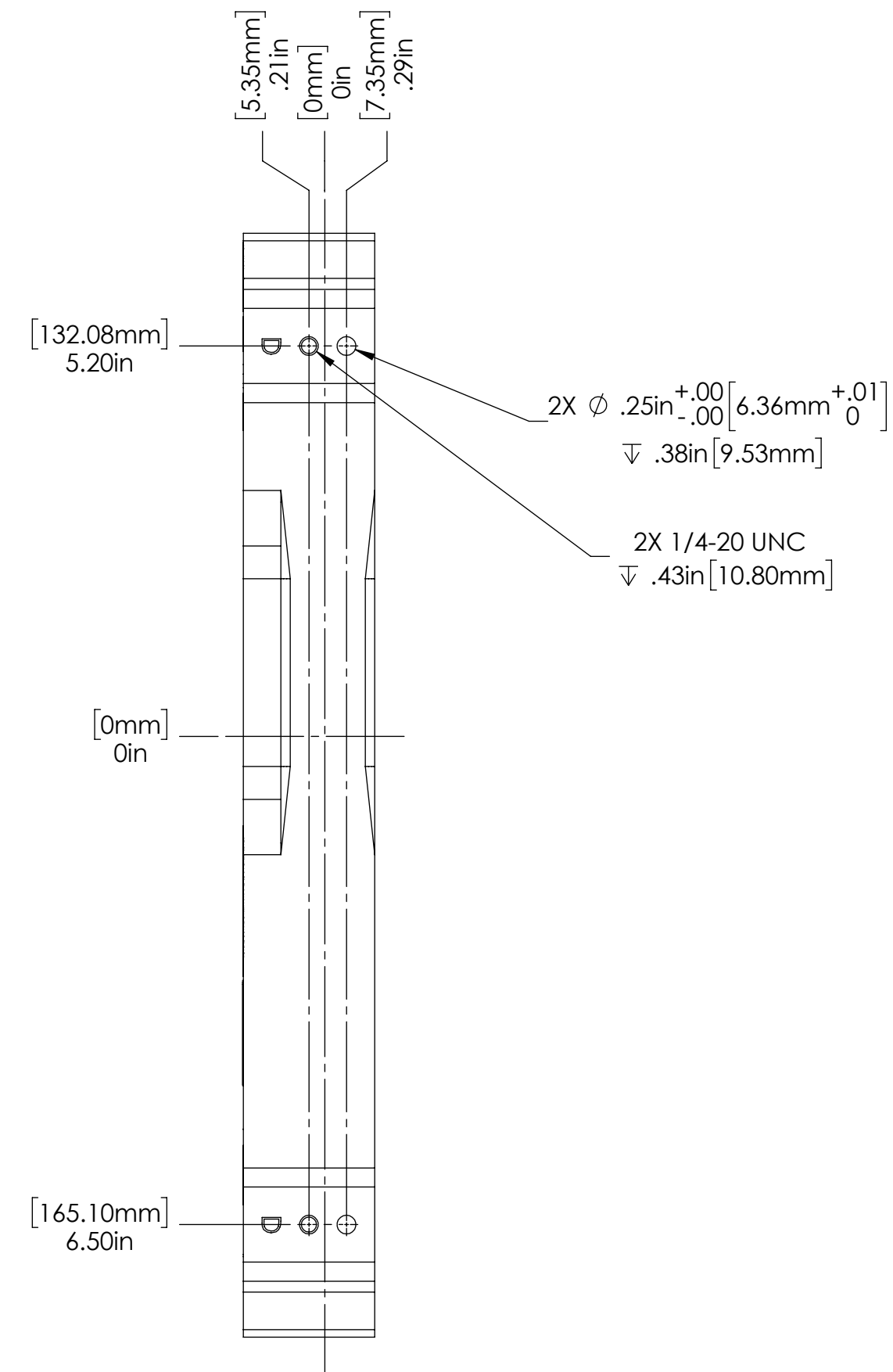
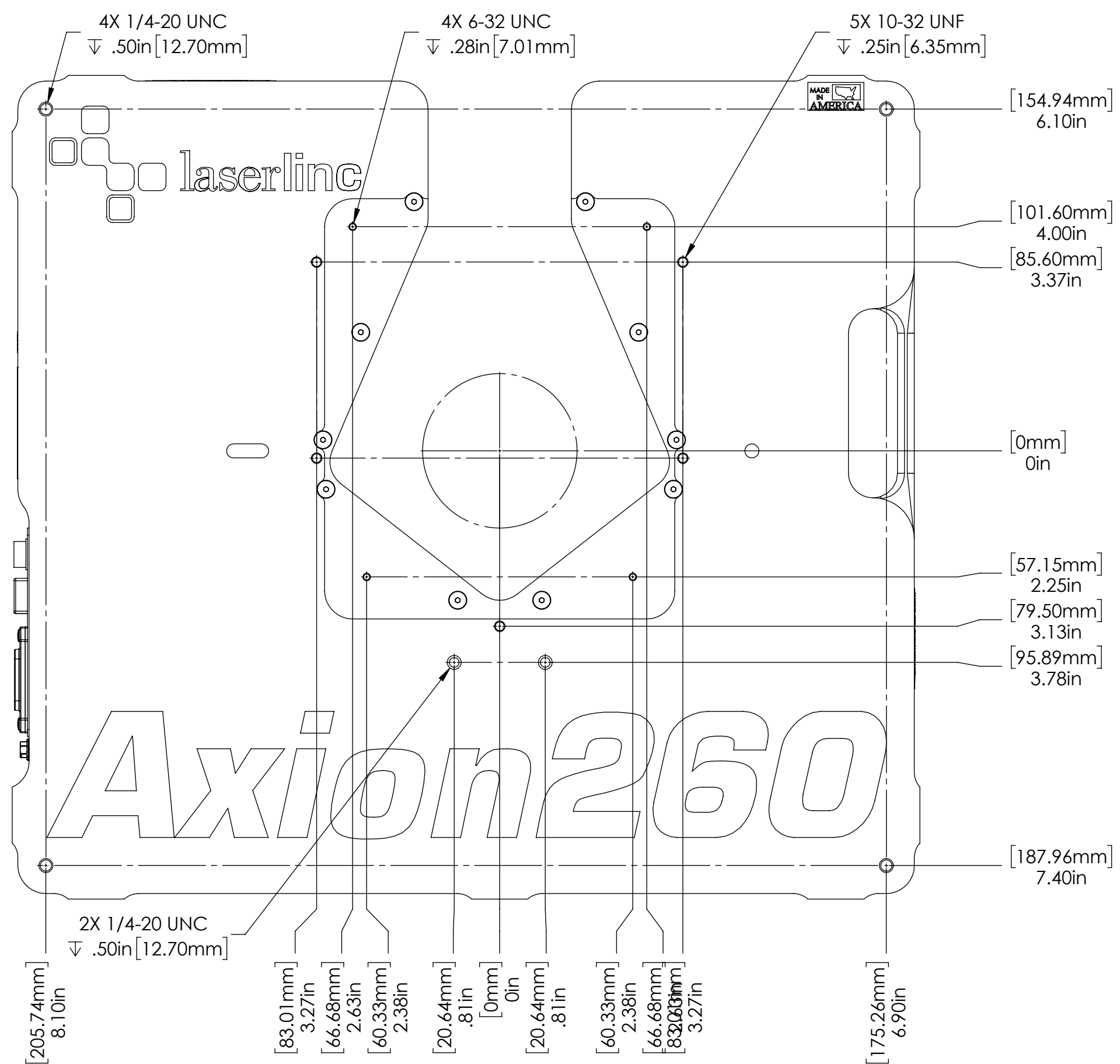
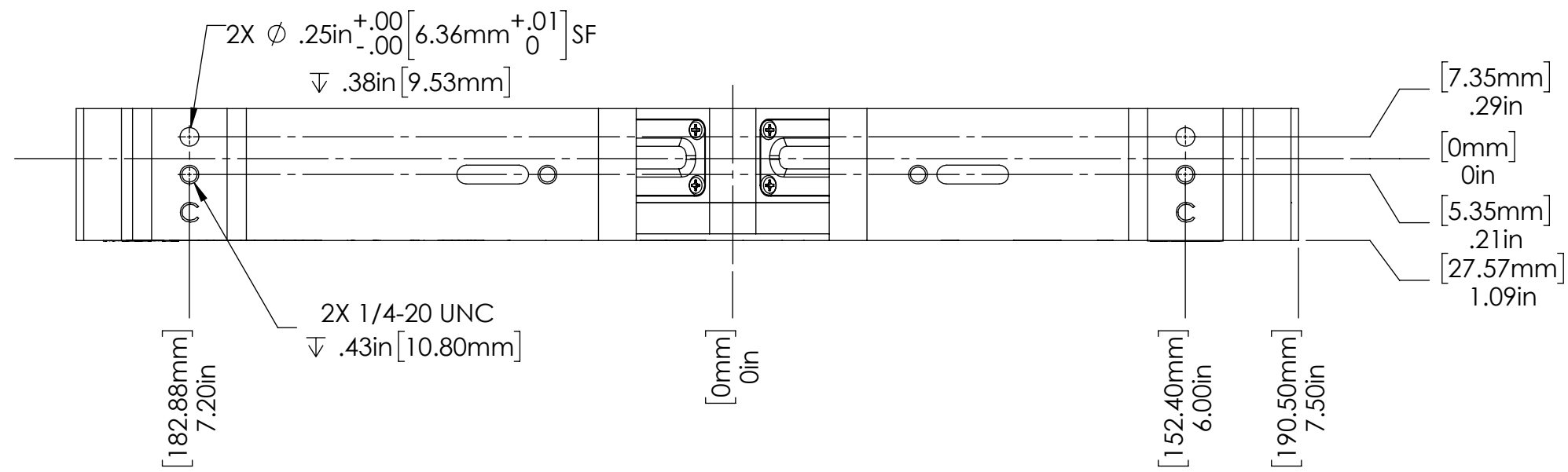
TO MEASUREMENT FIELD
[5.70mm]
.22in

[22.23mm]
.88in

- NOTES:**
- APPROX. WEIGHT: 21 LBS [9.53KG]
 - POWER REQUIREMENTS: 100-240 VAC 50/60 Hz 50 W MAX.
 - MEASUREMENTS PER SECOND (Hz): 3200 [1600 PER AXIS] / 8000 [4000 PER AXIS] / 12000 [6000 PER AXIS]
 - RESOLUTION: 0.000001" [0.025µm]
 - REPEATABILITY² UN-AVERAGED: ±0.0011" [±28µm]
 - REPEATABILITY² TWO SECOND: ±0.00001" [±0.25µm]

GENERAL FINISH NOTE		UNLESS OTHERWISE SPECIFIED: DIMENSIONS ARE IN INCHES		NAME	DATE
DE-BURR AND BREAK ALL SHARP EDGES BEFORE FINISH AND/OR SHIPPING		TOLERANCES: ANGLES ±25° TWO PLACE DECIMAL ±0.010 THREE PLACE DECIMAL ±0.005 FOUR PLACE DECIMAL ±0.0005 UNMARKED FILLETS/CHAMFER .06 DE-BURR ALL PARTS		DRAWN BY:	EMM 08/13/2021
PROPRIETARY AND CONFIDENTIAL		INTERPRET GEOMETRIC TOLERANCING PER: ASME Y14.5			
THE INFORMATION CONTAINED IN THIS DRAWING IS THE SOLE PROPERTY OF LASERLINC, INC. ANY REPRODUCTION IN PART OR AS A WHOLE WITHOUT THE WRITTEN PERMISSION OF LASERLINC, INC IS PROHIBITED.		MATERIAL		63 RA SURFACE FINISH ALL FEATURES MUST MEET SPECIFICATION AFTER PLATING BEFORE POWDER-COAT IF PLATED OR POWDER-COATED SEE FINISH	
		FINISH			
		DO NOT SCALE DRAWING			
TITLE: AXION260, DUAL-AXIS NETLINC MICROMETER			SIZE C	DWG. NO. 0260-0002-00	REV F
SCALE: 1:2			SHEET 7 OF 8		





GENERAL FINISH NOTE		UNLESS OTHERWISE SPECIFIED: DIMENSIONS ARE IN INCHES		NAME	DATE
DE-BURR AND BREAK ALL SHARP EDGES BEFORE FINISH AND/OR SHIPPING		TOLERANCES: ANGLES: $\pm 25^\circ$ TWO PLACE DECIMAL ± 0.010 THREE PLACE DECIMAL ± 0.005 FOUR PLACE DECIMAL ± 0.0005 UNMARKED FILLETS/CHAMFER .06 DE-BURR ALL PARTS		DRAWN BY:	EMM 08/13/2021
PROPRIETARY AND CONFIDENTIAL		INTERPRET GEOMETRIC TOLERANCING PER: ASME Y14.5		TITLE: AXION260, DUAL-AXIS NETLINC MICROMETER	
THE INFORMATION CONTAINED IN THIS DRAWING IS THE SOLE PROPERTY OF LASERLINC, INC. ANY REPRODUCTION IN PART OR AS A WHOLE WITHOUT THE WRITTEN PERMISSION OF LASERLINC, INC IS PROHIBITED.		MATERIAL		63 RA SURFACE FINISH ALL FEATURES MUST MEET SPECIFICATION AFTER PLATING BEFORE POWDER-COAT IF PLATED OR POWDER-COATED SEE FINISH	
DO NOT SCALE DRAWING		FINISH		SIZE	DWG. NO.
				C	0260-0002-00
				REV	F
				SCALE: 1:2 SHEET 8 OF 8	

laserline LASERLINC, INC.
 PHONE: 937-318-2440
 INFO@LASERLINC.COM
 WWW.LASERLINC.COM