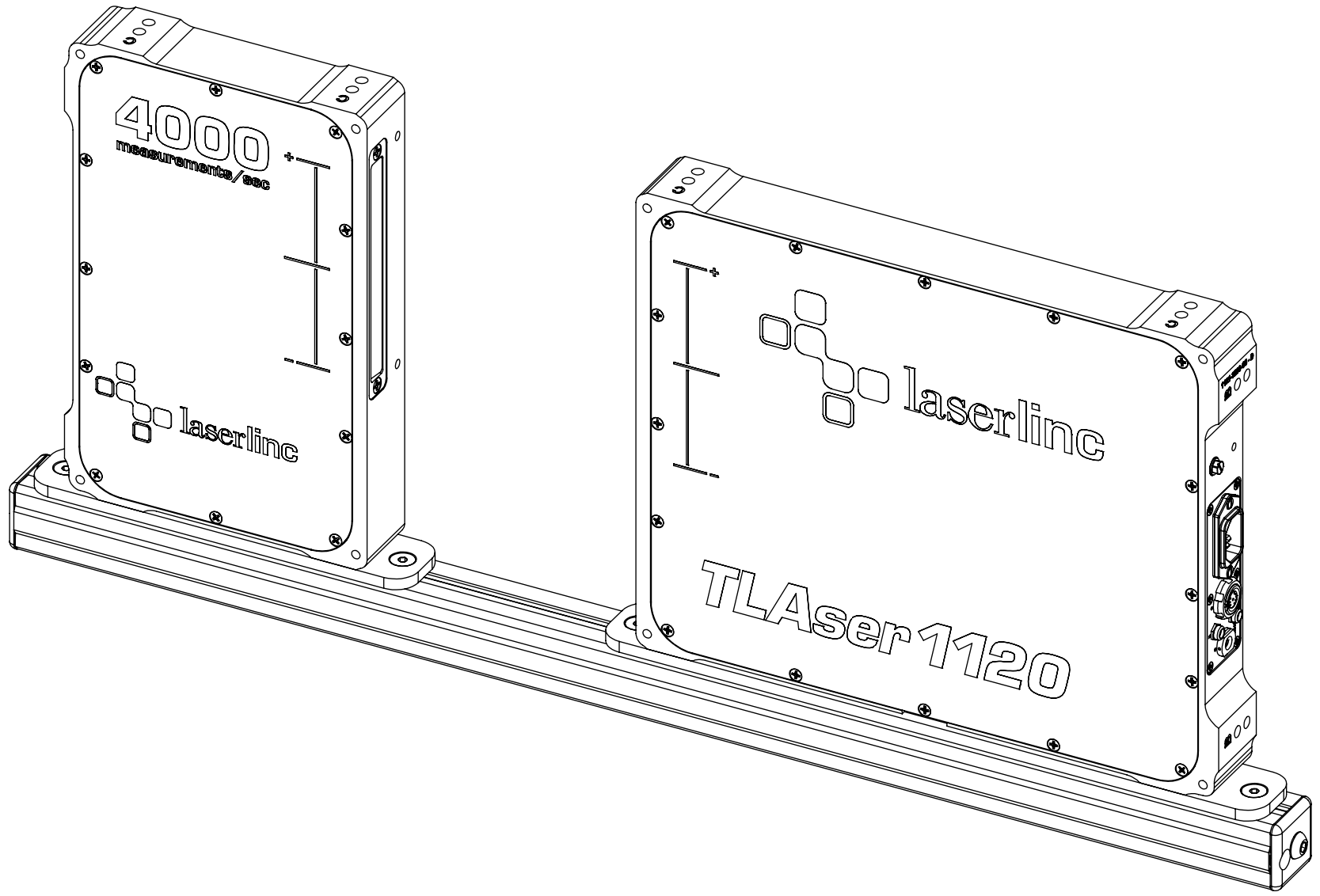


8 7 6 5 4 3 2 1

ZONE		REV.	DESCRIPTION	DATE	APPROVED
		A	Check-In	2/18/2013	MAM


REVISIONS



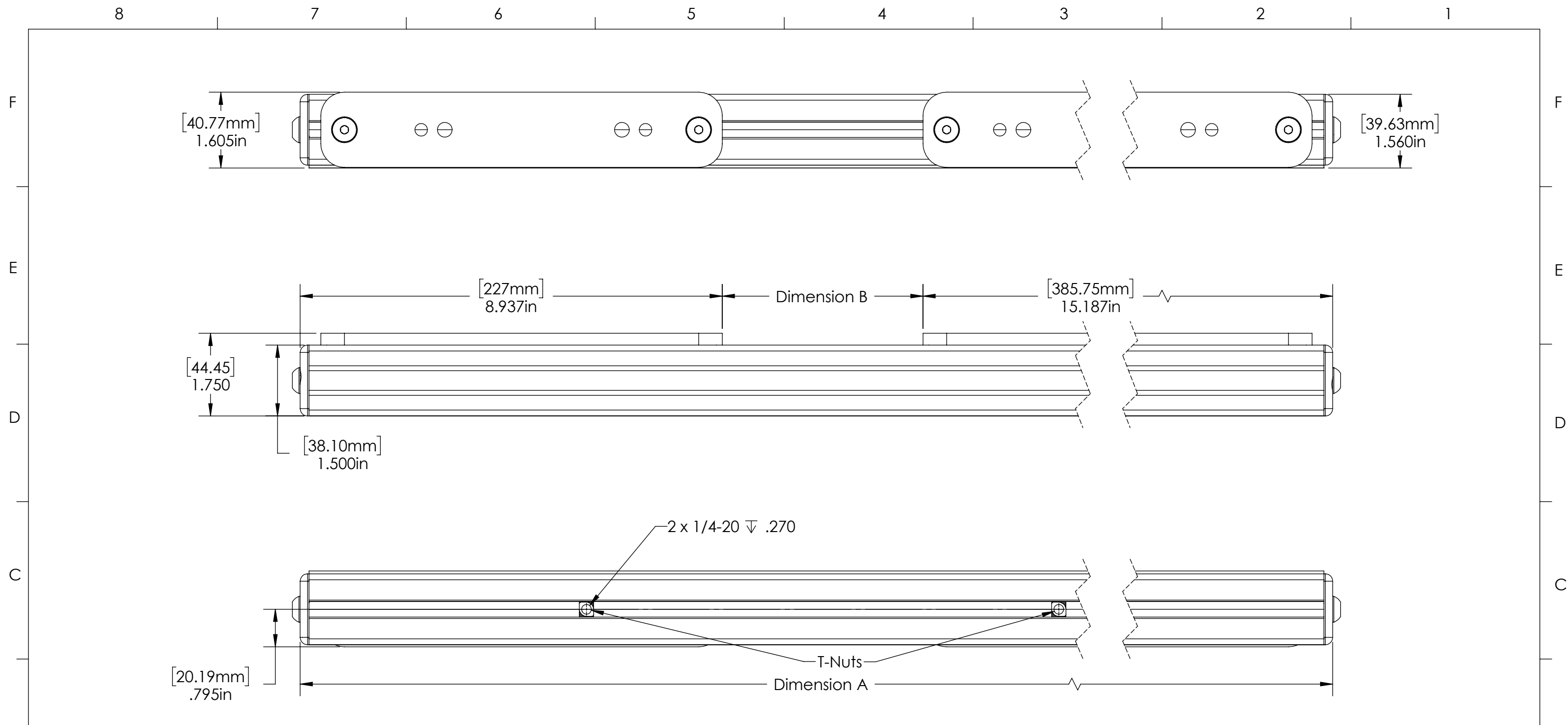
MOUNTING RAIL FOR TLASER 1120 MICROMETER OVERALL DIMENSIONS

INDEX

- (1) COVER PAGE
- (2) FIXTURE DIMENSIONS
- (3) MOUNTED DIMENSIONS

GENERAL FINISH NOTE		UNLESS OTHERWISE SPECIFIED:		NAME	DATE	 LaserLinc, Inc. Phone: 888-707-4892 info@laserline.com www.laserline.com
DE-BURR AND BREAK ALL SHARP EDGES BEFORE FINISH AND/OR SHIPPING		DIMENSIONS ARE IN INCHES TOLERANCES: ANGLES ±.25 TWO PLACE DECIMAL ±0.010 THREE PLACE DECIMAL ±0.005 FOUR PLACE DECIMAL ±0.0005 UNMARKED FILLETS/CHAMFER .06 DE-BURR ALL PARTS		DRAWN BY:	MAM	
PROPRIETARY AND CONFIDENTIAL		INTERPRET GEOMETRIC TOLERANCING PER: ASME Y14.5				TITLE: 1120-0000-27 Mounting Rail for TLAser1120 Micrometer Overall Dimensions
THE INFORMATION CONTAINED IN THIS DRAWING IS THE SOLE PROPERTY OF LASERLINC, INC. ANY REPRODUCTION IN PART OR AS A WHOLE WITHOUT THE WRITTEN PERMISSION OF LASERLINC, INC IS PROHIBITED.		MATERIAL		63 RA SURFACE FINISH ALL FEATURES MUST MEET SPECIFICATION AFTER PLATING BEFORE POWDER-COAT IF PLATED OR POWDER-COATED SEE FINISH		SIZE B
		FINISH				DWG. NO. 1120-0000-27
		DO NOT SCALE DRAWING				REV A
				SCALE: 1:3		SHEET 1 OF 3

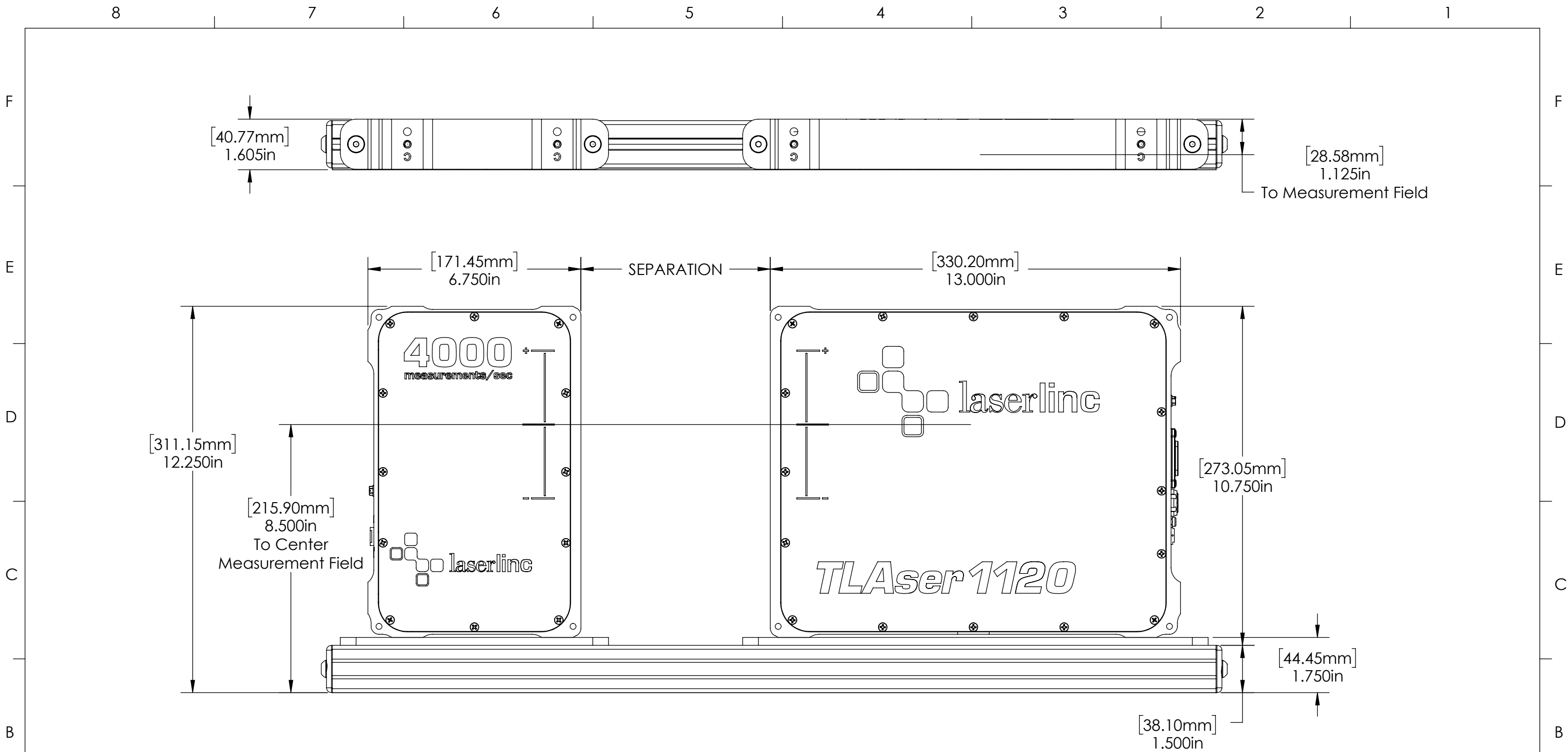
8 7 6 5 4 3 2 1




Note:
 • The T-nuts can be placed at any point along the rail.

Separation	Dimension A	Dimension B	Assembly CAT Number	GENERAL FINISH NOTE	UNLESS OTHERWISE SPECIFIED:	NAME	DATE	
6	22.374in [568.30mm]	4.250in [107.95mm]	01120-27-6 Mounting Rail for TLaser1120 Micrometer	DE-BURR AND BREAK ALL SHARP EDGES BEFORE FINISH AND/OR SHIPPING PROPRIETARY AND CONFIDENTIAL THE INFORMATION CONTAINED IN THIS DRAWING IS THE SOLE PROPERTY OF LASERLINC, INC. ANY REPRODUCTION IN PART OR AS A WHOLE WITHOUT THE WRITTEN PERMISSION OF LASERLINC, INC IS PROHIBITED.	DIMENSIONS ARE IN INCHES TOLERANCES: ANGLES ±.25° TWO PLACE DECIMAL ±0.010 THREE PLACE DECIMAL ±0.005 FOUR PLACE DECIMAL ±0.0005 UNMARKED FILLETS/CHAMFER .06 DE-BURR ALL PARTS INTERPRET GEOMETRIC TOLERANCING PER: ASME Y14.5 MATERIAL FINISH DO NOT SCALE DRAWING	DRAWN BY:	MAM	
8	24.374in [619.10mm]	6.250in [158.75mm]	01120-27-8 Mounting Rail for TLaser1120 Micrometer					
10	26.374in [669.90mm]	8.250in [209.55mm]	01120-27-10 Mounting Rail for TLaser1120 Micrometer					
12	28.374in [720.70mm]	10.250in [260.35mm]	01120-27-12 Mounting Rail for TLaser1120 Micrometer					
14	30.374in [771.50mm]	12.250in [311.15mm]	01120-27-614 Mounting Rail for TLaser1120 Micrometer					
				TITLE: 1120-0000-27 Mounting Rail for TLaser1120 Micrometer Overall Dimensions		SIZE	DWG. NO.	REV
						B	1120-0000-27	A
						SCALE: 1:2		SHEET 2 OF 3





GENERAL FINISH NOTE DE-BURR AND BREAK ALL SHARP EDGES BEFORE FINISH AND/OR SHIPPING	UNLESS OTHERWISE SPECIFIED: DIMENSIONS ARE IN INCHES TOLERANCES: ANGLES ±.25 TWO PLACE DECIMAL ±0.010 THREE PLACE DECIMAL ±0.005 FOUR PLACE DECIMAL ±0.0005 UNMARKED FILLETS/CHAMFER .06 DE-BURR ALL PARTS	NAME MAM	DATE 11/6/2019	 LaserLinc, Inc. Phone: 888-707-4892 info@laserline.com www.laserline.com
	PROPRIETARY AND CONFIDENTIAL	INTERPRET GEOMETRIC TOLERANCING PER: ASME Y14.5	DRAWN BY:	
THE INFORMATION CONTAINED IN THIS DRAWING IS THE SOLE PROPERTY OF LASERLINC, INC. ANY REPRODUCTION IN PART OR AS A WHOLE WITHOUT THE WRITTEN PERMISSION OF LASERLINC, INC. IS PROHIBITED.	MATERIAL	63 RA SURFACE FINISH ALL FEATURES MUST MEET SPECIFICATION AFTER PLATING BEFORE POWDER-COAT IF PLATED OR POWDER-COATED SEE FINISH		SIZE B
	FINISH	DWG. NO. 1120-0000-27	REV A	SCALE: 1:3
	DO NOT SCALE DRAWING			SHEET 3 OF 3