

8

7

6

5

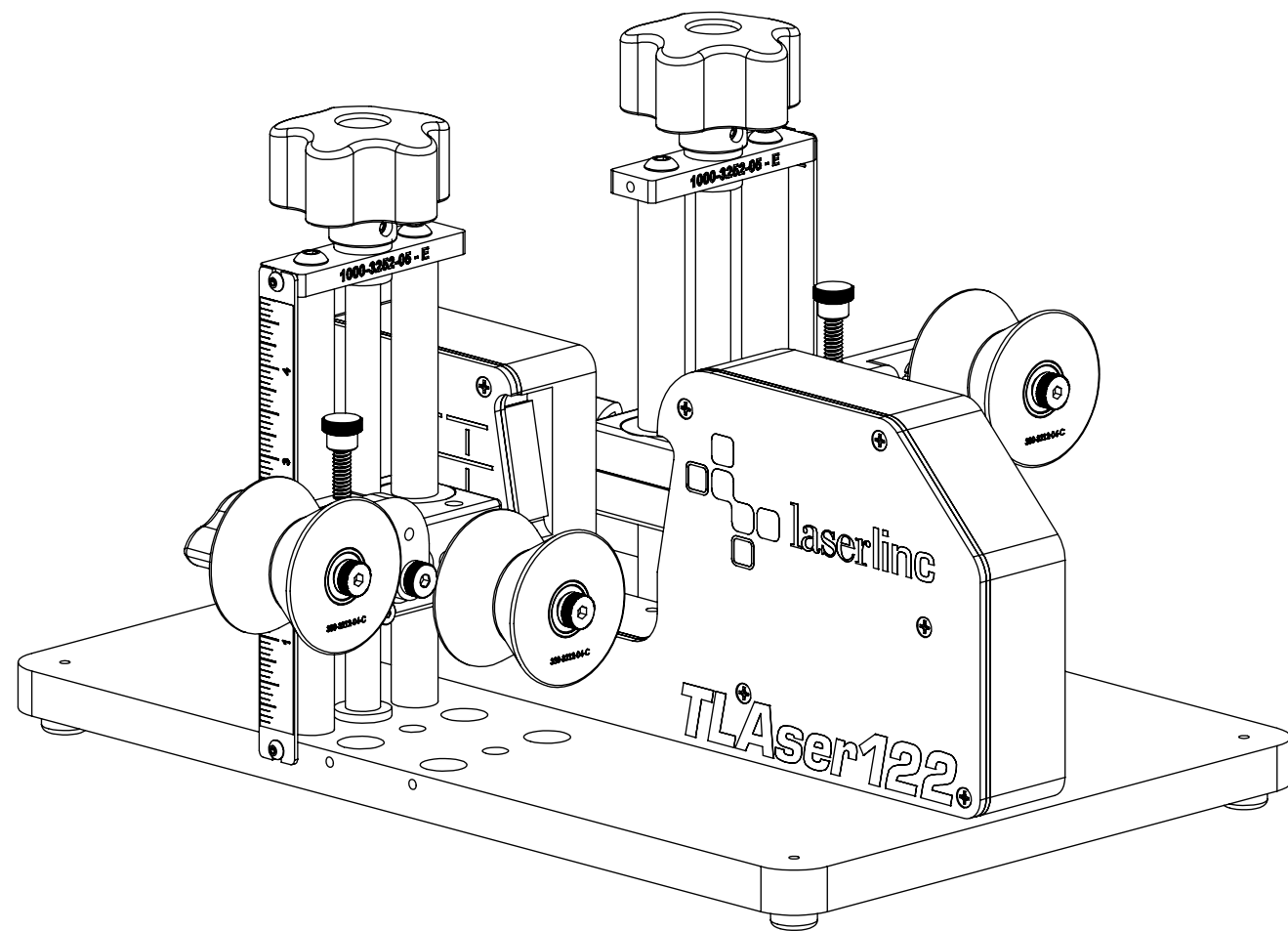
4

3

2

1


ZONE		REV.	DESCRIPTION	DATE	APPROVED
		A	Check-In	3/12/2013	MAM



# TENSION ROLLER GUIDE FOR TLASER122 MICROMETER OVERALL DIMENSIONS

## INDEX

- (1) COVER PAGE
- (2) DIMENSIONS

<b>GENERAL FINISH NOTE</b>		UNLESS OTHERWISE SPECIFIED:		NAME	DATE	 <b>LaserLinc, Inc.</b> Phone: 888-707-4892 info@laserlinc.com www.laserlinc.com
<b>DE-BURR AND BREAK ALL SHARP EDGES BEFORE FINISH AND/OR SHIPPING</b>		DIMENSIONS ARE IN INCHES TOLERANCES: ANGLES ±.25° TWO PLACE DECIMAL ±0.010 THREE PLACE DECIMAL ±0.005 FOUR PLACE DECIMAL ±0.0005 UNMARKED FILLETS/CHAMFER .06 DE-BURR ALL PARTS		DRAWN BY:	MAM 6/13/2016	
PROPRIETARY AND CONFIDENTIAL		INTERPRET GEOMETRIC TOLERANCING PER: ASME Y14.5				<b>TITLE:</b> 0122-0000-69 TENSION ROLLER GUIDE FOR TLASER122 MICROMETER OVERALL DIMENSIONS
THE INFORMATION CONTAINED IN THIS DRAWING IS THE SOLE PROPERTY OF LASERLINC, INC. ANY REPRODUCTION IN PART OR AS A WHOLE WITHOUT THE WRITTEN PERMISSION OF LASERLINC, INC. IS PROHIBITED.		MATERIAL		63 RA SURFACE FINISH ALL FEATURES MUST MEET SPECIFICATION AFTER PLATING BEFORE POWDER-COAT IF PLATED OR POWDER-COATED SEE FINISH		<b>SIZE</b> <b>B</b>
		FINISH		DWG. NO. 0122-0000-69		<b>REV</b> <b>A</b>
		DO NOT SCALE DRAWING		SCALE: 1:2		SHEET 1 OF 2

8

7

6

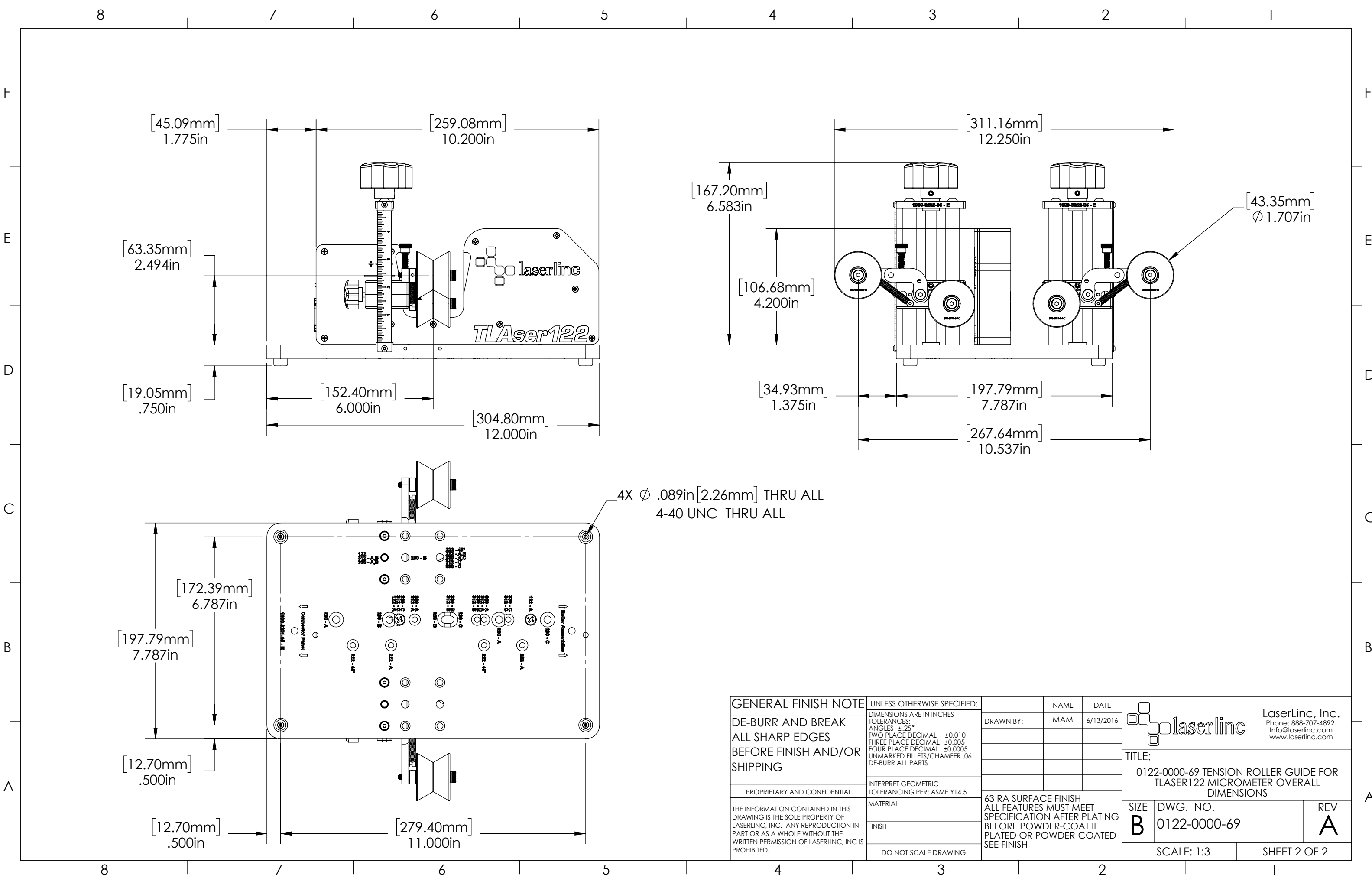
5

4

3

2

1



[45.09mm] 1.775in  
 [259.08mm] 10.200in

[63.35mm] 2.494in

[19.05mm] .750in

[152.40mm] 6.000in

[304.80mm] 12.000in

[167.20mm] 6.583in

[106.68mm] 4.200in

[34.93mm] 1.375in

[311.16mm] 12.250in

[197.79mm] 7.787in

[267.64mm] 10.537in

[43.35mm] Ø 1.707in

[172.39mm] 6.787in

[197.79mm] 7.787in

[12.70mm] .500in

[12.70mm] .500in

[279.40mm] 11.000in

4X Ø .089in [2.26mm] THRU ALL  
 4-40 UNC THRU ALL

<b>GENERAL FINISH NOTE</b> DE-BURR AND BREAK ALL SHARP EDGES BEFORE FINISH AND/OR SHIPPING  PROPRIETARY AND CONFIDENTIAL  THE INFORMATION CONTAINED IN THIS DRAWING IS THE SOLE PROPERTY OF LASERLINC, INC. ANY REPRODUCTION IN PART OR AS A WHOLE WITHOUT THE WRITTEN PERMISSION OF LASERLINC, INC IS PROHIBITED.	UNLESS OTHERWISE SPECIFIED: DIMENSIONS ARE IN INCHES TOLERANCES: ANGLES ±.25° TWO PLACE DECIMAL ±0.010 THREE PLACE DECIMAL ±0.005 FOUR PLACE DECIMAL ±0.0005 UNMARKED FILLETS/CHAMFER .06 DE-BURR ALL PARTS	NAME DATE DRAWN BY: MAM 6/13/2016	LaserLinc, Inc. Phone: 888-707-4892 info@laserlinc.com www.laserlinc.com	
	INTERPRET GEOMETRIC TOLERANCING PER: ASME Y14.5	TITLE: 0122-0000-69 TENSION ROLLER GUIDE FOR TLASER 122 MICROMETER OVERALL DIMENSIONS		
MATERIAL FINISH DO NOT SCALE DRAWING	63 RA SURFACE FINISH ALL FEATURES MUST MEET SPECIFICATION AFTER PLATING BEFORE POWDER-COAT IF PLATED OR POWDER-COATED SEE FINISH	SIZE <b>B</b>	DWG. NO. 0122-0000-69	REV <b>A</b>
		SCALE: 1:3	SHEET 2 OF 2	