


REVISIONS				
ZONE	REV.	DESCRIPTION	DATE	APPROVED
	A	CHECK-IN	7/26/2012	MAM

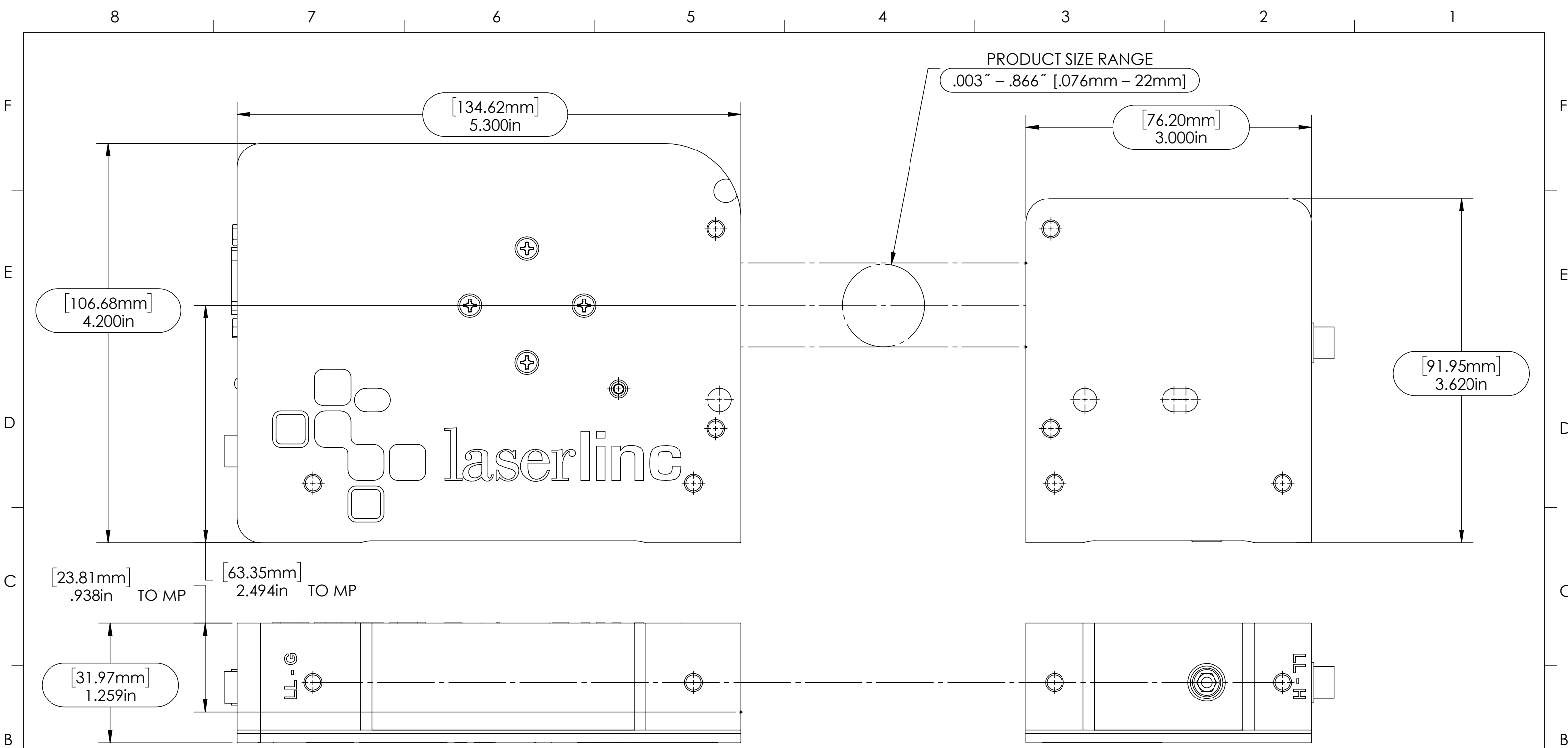
**5122-0000-00 TLASER122S,
SINGLE-AXIS DATA SPLIT-
HEAD MICROMETER
OVERALL AND MOUNTING
DIMENSION**

- NOTES:**
- APPROX. WEIGHT: 3.2 LBS [1.45 KG]
 - POWER REQUIREMENTS: 12VDC 125MA, +5VDC 75MA, -5VDC 50MA PROVIDED BY HOST PC OR EXTERNAL NETLINC
 - MEASUREMENTS PER SECOND (Hz): 400
 - RESOLUTION: .000001" [.025µm]
 - REPEATABILITY² UNAVERAGED: ±.0001" [±2.5µm]
 - REPEATABILITY² TWO SECOND: ±.000005" [±.125µm]

INDEX

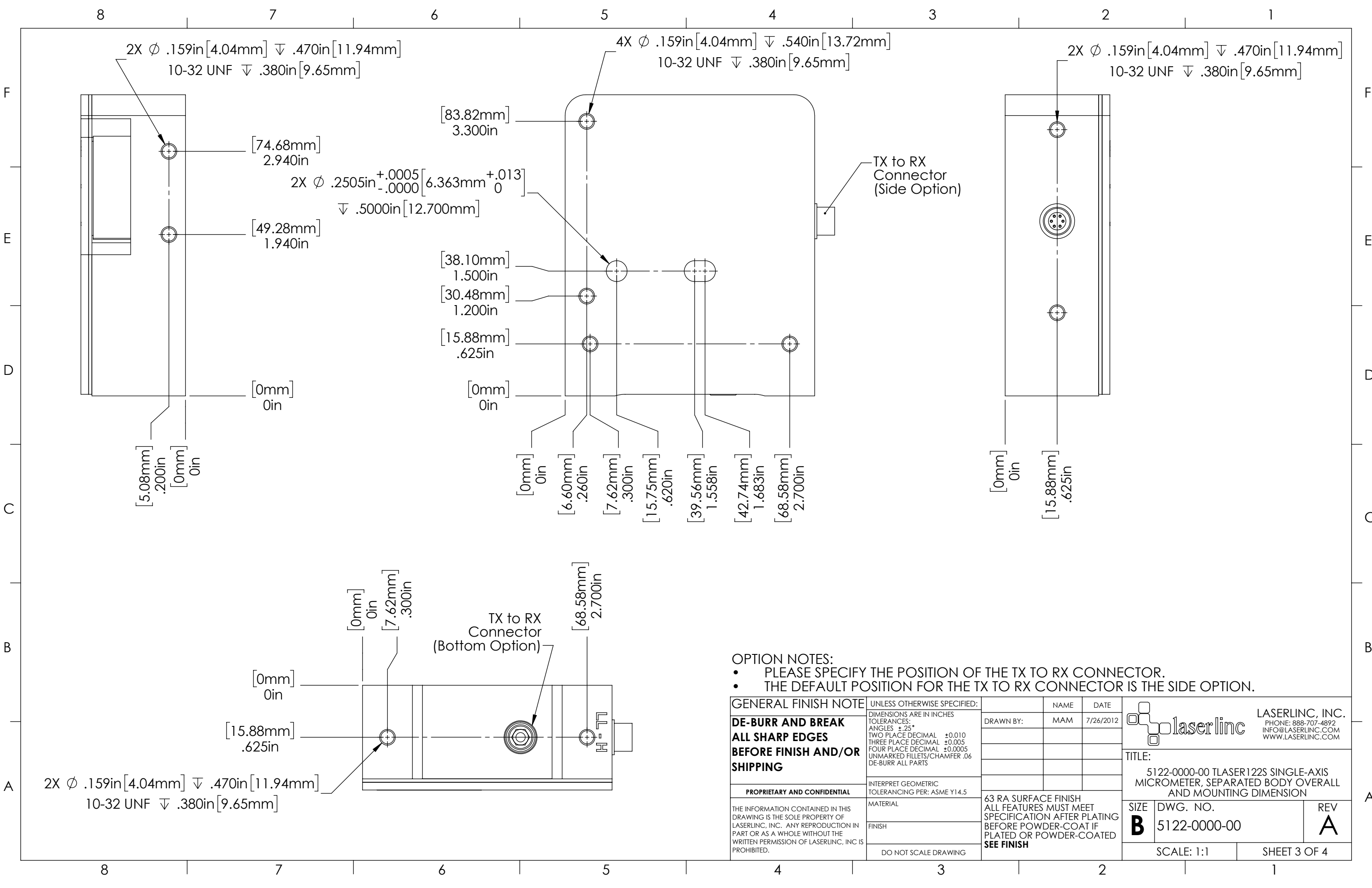
- (1) COVER PAGE
- (2) DIMENSIONS
- (3) DIMENSIONS 2
- (4) DIMENSIONS 3

GENERAL FINISH NOTE		UNLESS OTHERWISE SPECIFIED:		NAME	DATE
DE-BURR AND BREAK ALL SHARP EDGES BEFORE FINISH AND/OR SHIPPING		DIMENSIONS ARE IN INCHES TOLERANCES: ANGLES ±.25° TWO PLACE DECIMAL ±0.010 THREE PLACE DECIMAL ±0.005 FOUR PLACE DECIMAL ±0.0005 UNMARKED FILLETS/CHAMFER .06 DE-BURR ALL PARTS		DRAWN BY:	MAM 7/26/2012
PROPRIETARY AND CONFIDENTIAL		INTERPRET GEOMETRIC TOLERANCING PER: ASME Y14.5			
THE INFORMATION CONTAINED IN THIS DRAWING IS THE SOLE PROPERTY OF LASERLINC, INC. ANY REPRODUCTION IN PART OR AS A WHOLE WITHOUT THE WRITTEN PERMISSION OF LASERLINC, INC. IS PROHIBITED.		MATERIAL		63 RA SURFACE FINISH ALL FEATURES MUST MEET SPECIFICATION AFTER PLATING BEFORE POWDER-COAT IF PLATED OR POWDER-COATED SEE FINISH	
		FINISH			
		DO NOT SCALE DRAWING			
 LASERLINC, INC. PHONE: 888-707-4892 INFO@LASERLINC.COM WWW.LASERLINC.COM				TITLE:	
				5122-0000-00 TLASER122S SINGLE-AXIS MICROMETER, SEPARATED BODY OVERALL AND MOUNTING DIMENSION	
SIZE		DWG. NO.		REV	
B		5122-0000-00		A	
SCALE: 1:1			SHEET 1 OF 4		




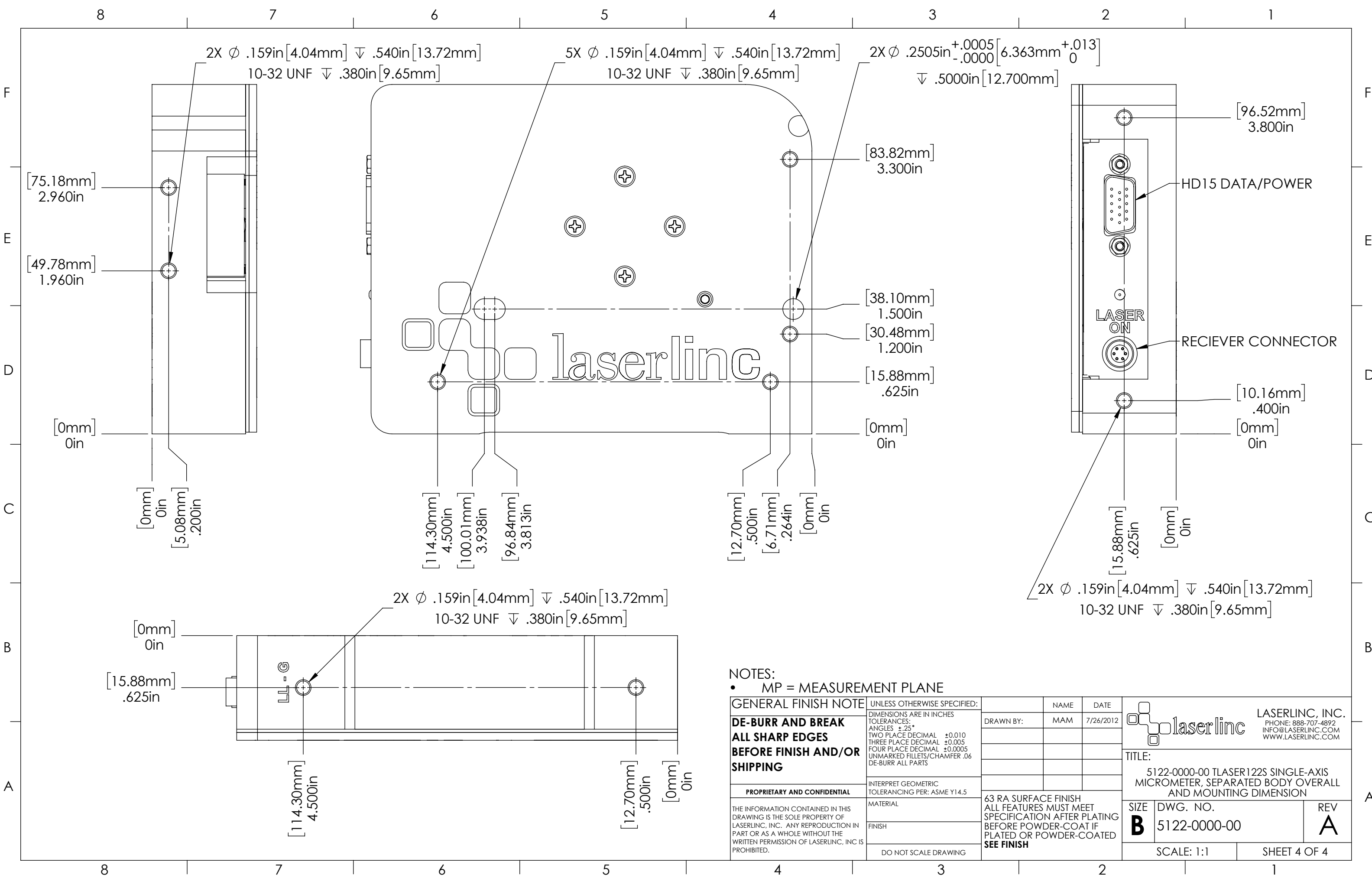
NOTES:
 • MP = MEASUREMENT PLANE

GENERAL FINISH NOTE DE-BURR AND BREAK ALL SHARP EDGES BEFORE FINISH AND/OR SHIPPING	UNLESS OTHERWISE SPECIFIED: DIMENSIONS ARE IN INCHES TOLERANCES: ANGLES ±.25° TWO PLACE DECIMAL ±0.010 THREE PLACE DECIMAL ±0.005 FOUR PLACE DECIMAL ±0.0005 UNMARKED FILLETS/CHAMFER .06 DE-BURR ALL PARTS	NAME MAM	DATE 7/26/2012		LASERLINC, INC. PHONE: 888-707-4892 INFO@LASERLINC.COM WWW.LASERLINC.COM			
	PROPRIETARY AND CONFIDENTIAL	INTERPRET GEOMETRIC TOLERANCING PER: ASME Y14.5	DRAWN BY:			TITLE: 5122-0000-00 TLASER122S SINGLE-AXIS MICROMETER, SEPARATED BODY OVERALL AND MOUNTING DIMENSION		
	THE INFORMATION CONTAINED IN THIS DRAWING IS THE SOLE PROPERTY OF LASERLINC, INC. ANY REPRODUCTION IN PART OR AS A WHOLE WITHOUT THE WRITTEN PERMISSION OF LASERLINC, INC. IS PROHIBITED.	MATERIAL	63 RA SURFACE FINISH ALL FEATURES MUST MEET SPECIFICATION AFTER PLATING BEFORE POWDER-COAT IF PLATED OR POWDER-COATED SEE FINISH			SIZE B	DWG. NO. 5122-0000-00	REV A
	DO NOT SCALE DRAWING	SCALE: 1:1	SHEET 2 OF 4					




- OPTION NOTES:**
- PLEASE SPECIFY THE POSITION OF THE TX TO RX CONNECTOR.
 - THE DEFAULT POSITION FOR THE TX TO RX CONNECTOR IS THE SIDE OPTION.

GENERAL FINISH NOTE DE-BURR AND BREAK ALL SHARP EDGES BEFORE FINISH AND/OR SHIPPING	UNLESS OTHERWISE SPECIFIED: DIMENSIONS ARE IN INCHES TOLERANCES: ANGLES ±.25° TWO PLACE DECIMAL ±0.010 THREE PLACE DECIMAL ±0.005 FOUR PLACE DECIMAL ±0.0005 UNMARKED FILLETS/CHAMFER .06 DE-BURR ALL PARTS	NAME	DATE	 LASERLINC, INC. PHONE: 888-707-4892 INFO@LASERLINC.COM WWW.LASERLINC.COM
		DRAWN BY:	MAM	
PROPRIETARY AND CONFIDENTIAL THE INFORMATION CONTAINED IN THIS DRAWING IS THE SOLE PROPERTY OF LASERLINC, INC. ANY REPRODUCTION IN PART OR AS A WHOLE WITHOUT THE WRITTEN PERMISSION OF LASERLINC, INC. IS PROHIBITED.	INTERPRET GEOMETRIC TOLERANCING PER: ASME Y14.5 MATERIAL FINISH DO NOT SCALE DRAWING	63 RA SURFACE FINISH ALL FEATURES MUST MEET SPECIFICATION AFTER PLATING BEFORE POWDER-COAT IF PLATED OR POWDER-COATED SEE FINISH		TITLE: 5122-0000-00 TLASER122S SINGLE-AXIS MICROMETER, SEPARATED BODY OVERALL AND MOUNTING DIMENSION
		SIZE	DWG. NO.	REV
		B	5122-0000-00	A
		SCALE: 1:1		SHEET 3 OF 4



NOTES:
 • MP = MEASUREMENT PLANE

GENERAL FINISH NOTE	UNLESS OTHERWISE SPECIFIED:	NAME	DATE	 LASERLINC, INC. PHONE: 888-707-4892 INFO@LASERLINC.COM WWW.LASERLINC.COM
	DE-BURR AND BREAK ALL SHARP EDGES BEFORE FINISH AND/OR SHIPPING	DIMENSIONS ARE IN INCHES TOLERANCES: ANGLES \pm .25 TWO PLACE DECIMAL \pm 0.010 THREE PLACE DECIMAL \pm 0.005 FOUR PLACE DECIMAL \pm 0.0005 UNMARKED FILLETS/CHAMFER .06 DE-BURR ALL PARTS	DRAWN BY:	
PROPRIETARY AND CONFIDENTIAL	INTERPRET GEOMETRIC TOLERANCING PER: ASME Y14.5			
THE INFORMATION CONTAINED IN THIS DRAWING IS THE SOLE PROPERTY OF LASERLINC, INC. ANY REPRODUCTION IN PART OR AS A WHOLE WITHOUT THE WRITTEN PERMISSION OF LASERLINC, INC. IS PROHIBITED.	MATERIAL	63 RA SURFACE FINISH ALL FEATURES MUST MEET SPECIFICATION AFTER PLATING BEFORE POWDER-COAT IF PLATED OR POWDER-COATED SEE FINISH		TITLE: 5122-0000-00 TLASER122S SINGLE-AXIS MICROMETER, SEPARATED BODY OVERALL AND MOUNTING DIMENSION
	FINISH	SIZE	DWG. NO.	REV
	DO NOT SCALE DRAWING	B	5122-0000-00	A
		SCALE: 1:1		SHEET 4 OF 4