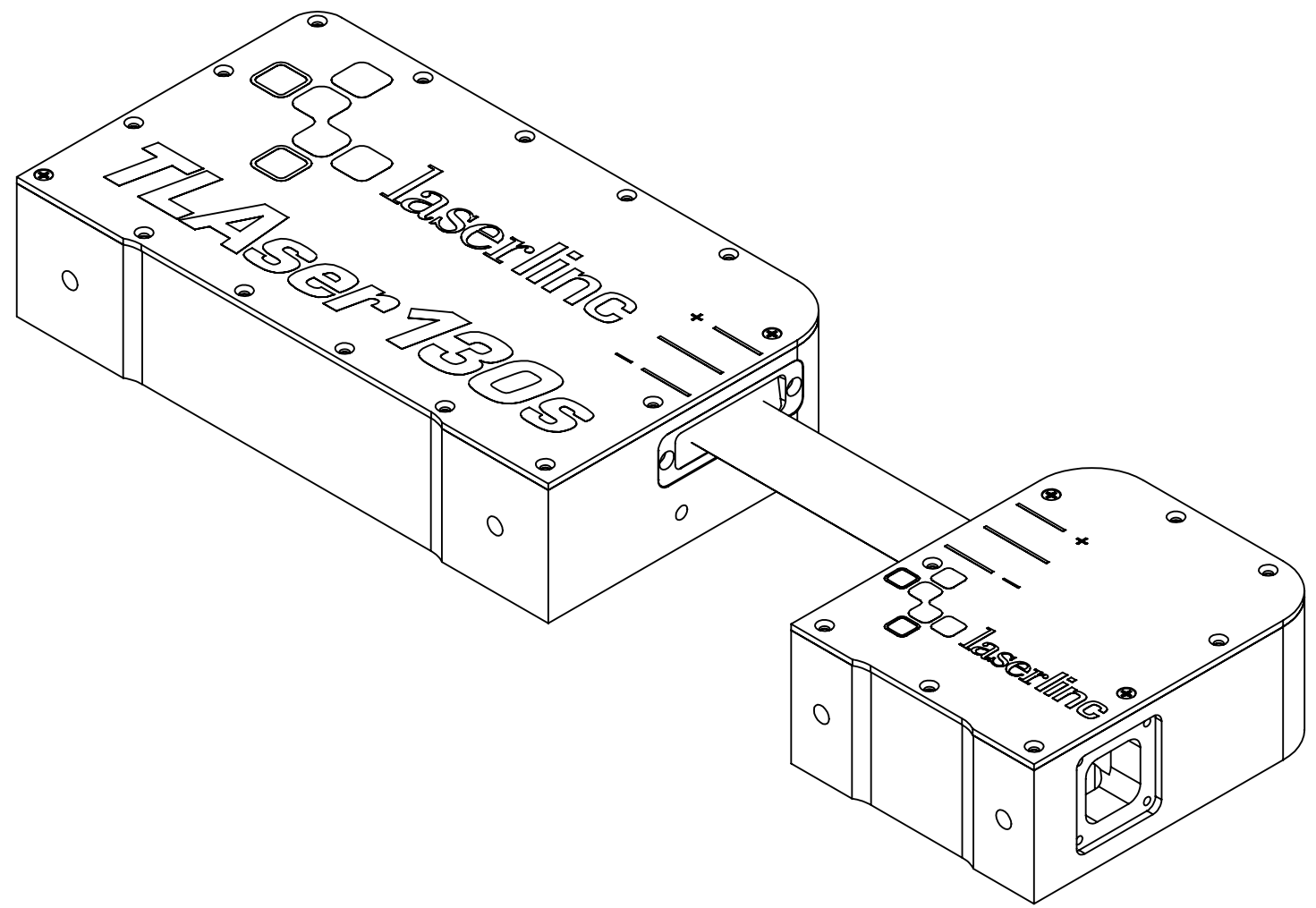


8 7 6 5 4 3 2 1

| ZONE | | REV. | DESCRIPTION | DATE | APPROVED |
|------|--|------|-------------|-----------|----------|
| | | A | Check-In | 9/25/2009 | MAM |
| | | B | Add sheet 3 | 1/6/2011 | MAM |




130s MOUNTING DIMENSIONS

F
E
D
C
B
A

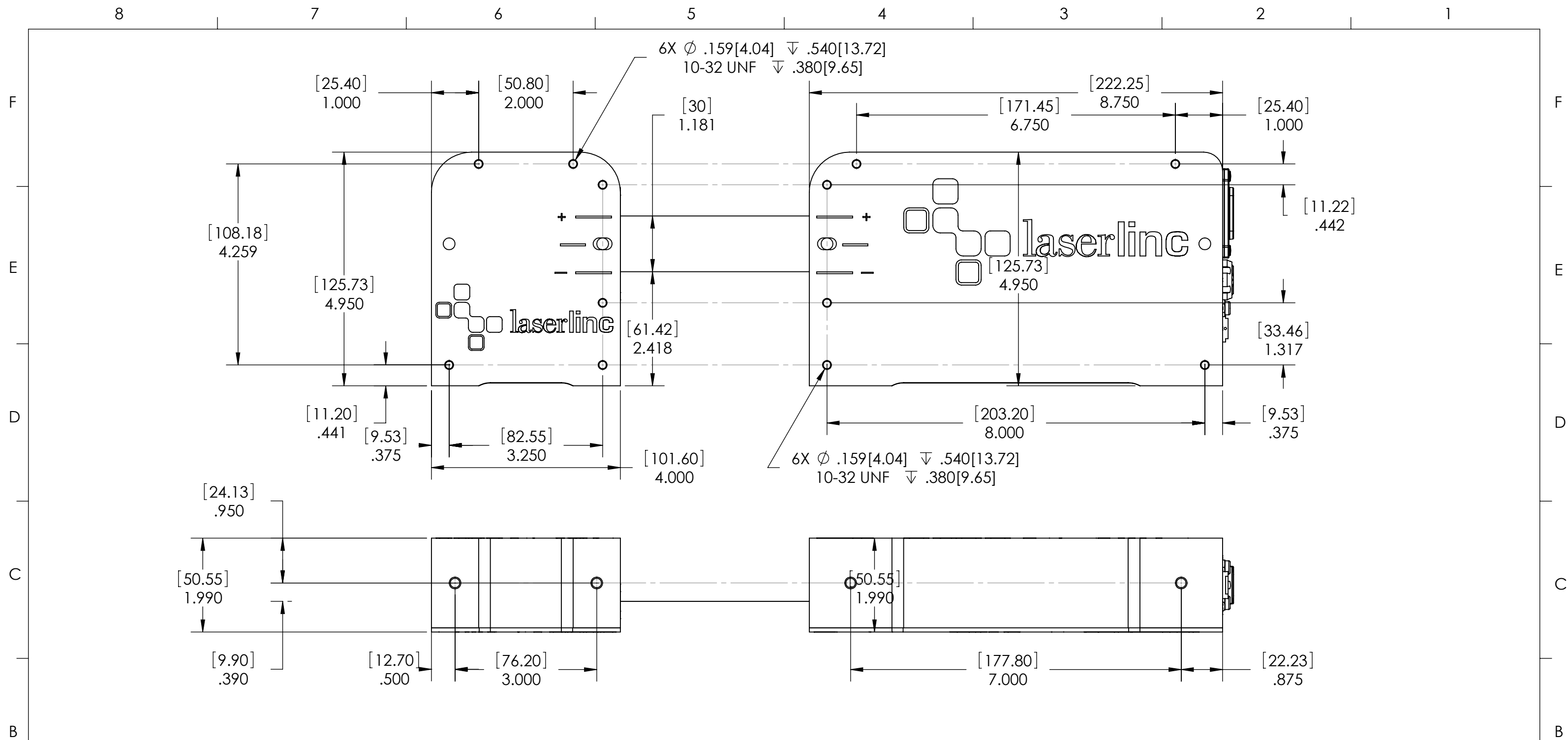
F
E
D
C
B
A

INDEX


- (1) COVER PAGE
- (2) DIMENSIONS
- (3) WITH RAIL DIMENSIONS

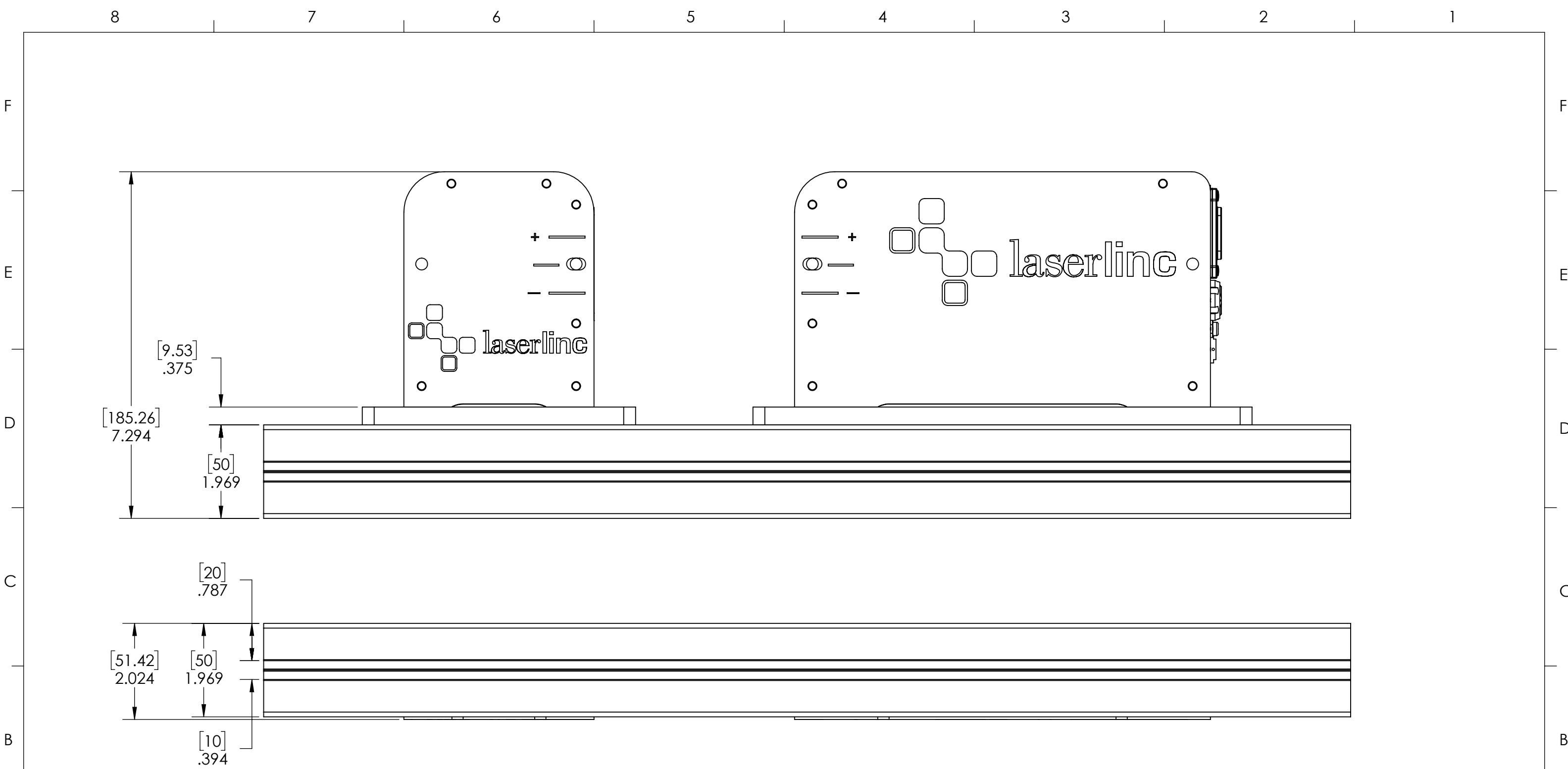
| | | | | | | | | | | | | |
|---|--------------|--|--|---|------|--|-----------|----------|-----|----------|--------------|----------|
| GENERAL FINISH NOTE | | UNLESS OTHERWISE SPECIFIED: | | NAME | DATE |  LASERLINC, INC. PHONE: 888-707-4892 INFO@LASERLINC.COM WWW.LASERLINC.COM | | | | | | |
| DE-BURR AND BREAK ALL SHARP EDGES BEFORE FINISH AND/OR SHIPPING | | DIMENSIONS ARE IN INCHES TOLERANCES: ANGLES ±.25° TWO PLACE DECIMAL ±0.010 THREE PLACE DECIMAL ±0.005 FOUR PLACE DECIMAL ±0.0005 UNMARKED FILLETS/CHAMFER .06 DE-BURR ALL PARTS | | DRAWN BY: | MAM | | 9/25/2009 | | | | | |
| PROPRIETARY AND CONFIDENTIAL | | INTERPRET GEOMETRIC TOLERANCING PER: ASME Y14.5 | | | | | | | | | | |
| THE INFORMATION CONTAINED IN THIS DRAWING IS THE SOLE PROPERTY OF LASERLINC, INC. ANY REPRODUCTION IN PART OR AS A WHOLE WITHOUT THE WRITTEN PERMISSION OF LASERLINC, INC. IS PROHIBITED. | | MATERIAL | | 63 RA SURFACE FINISH ALL FEATURES MUST MEET SPECIFICATION AFTER PLATING BEFORE POWDER-COAT IF PLATED OR POWDER-COATED SEE FINISH | | TITLE: 0130-0000-00 TLASER130S, SINGLE-AXIS SPLIT-HEAD MICROMETER OVERALL DIMENSIONS | | | | | | |
| | | FINISH | | DO NOT SCALE DRAWING | | <table border="1"> <tr> <td>SIZE</td> <td>DWG. NO.</td> <td>REV</td> </tr> <tr> <td>B</td> <td>0130-0000-00</td> <td>D</td> </tr> </table> | SIZE | DWG. NO. | REV | B | 0130-0000-00 | D |
| SIZE | DWG. NO. | REV | | | | | | | | | | |
| B | 0130-0000-00 | D | | | | | | | | | | |
| | | | | SCALE: 1:2 | | SHEET 1 OF 3 | | | | | | |

8 7 6 5 4 3 2 1




- NOTES:
- STANDARD SEPARATION IT 6".
 - CUSTOM SEPARATIONS ARE ALLOWED.
 - RAIL LENGTHS ARE DECIDED BY SEPARATION OF GAUGES.

| | | | | |
|--|---|---|--------------|--|
| GENERAL FINISH NOTE DE-BURR AND BREAK ALL SHARP EDGES BEFORE FINISH AND/OR SHIPPING | UNLESS OTHERWISE SPECIFIED: DIMENSIONS ARE IN INCHES TOLERANCES: ANGLES ±.25° TWO PLACE DECIMAL ±0.010 THREE PLACE DECIMAL ±0.005 FOUR PLACE DECIMAL ±0.0005 UNMARKED FILLETS/CHAMFER .06 DE-BURR ALL PARTS | NAME | DATE |  LASERLINC, INC. PHONE: 888-707-4892 INFO@LASERLINC.COM WWW.LASERLINC.COM |
| | | DRAWN BY: | MAM | |
| PROPRIETARY AND CONFIDENTIAL THE INFORMATION CONTAINED IN THIS DRAWING IS THE SOLE PROPERTY OF LASERLINC, INC. ANY REPRODUCTION IN PART OR AS A WHOLE WITHOUT THE WRITTEN PERMISSION OF LASERLINC, INC. IS PROHIBITED. | INTERPRET GEOMETRIC TOLERANCING PER: ASME Y14.5 MATERIAL FINISH DO NOT SCALE DRAWING | 63 RA SURFACE FINISH ALL FEATURES MUST MEET SPECIFICATION AFTER PLATING BEFORE POWDER-COAT IF PLATED OR POWDER-COATED SEE FINISH | | TITLE: 0130-0000-00 TLASER130S, SINGLE-AXIS SPLIT-HEAD MICROMETER OVERALL DIMENSIONS |
| | | SIZE | DWG. NO. | REV |
| | | B | 0130-0000-00 | D |
| | | SCALE: 1:2 | | SHEET 2 OF 3 |



Dimensions for the side view:

- Top view height: [185.26] 7.294
- Plate thickness: [9.53] .375
- Mounting thickness: [50] 1.969
- Bottom view height: [51.42] 2.024
- Mounting thickness: [50] 1.969
- Bottom view thickness: [10] .394
- Bottom view offset: [20] .787

| | | | | | | |
|--|--|---|-------------------|--|---|-----------------|
| GENERAL FINISH NOTE DE-BURR AND BREAK ALL SHARP EDGES BEFORE FINISH AND/OR SHIPPING | UNLESS OTHERWISE SPECIFIED: DIMENSIONS ARE IN INCHES TOLERANCES: ANGLES ±.25 TWO PLACE DECIMAL ±0.010 THREE PLACE DECIMAL ±0.005 FOUR PLACE DECIMAL ±0.0005 UNMARKED FILLETS/CHAMFER .06 DE-BURR ALL PARTS | NAME MAM | DATE 9/25/2009 |  LASERLINC, INC. PHONE: 888-707-4892 INFO@LASERLINC.COM WWW.LASERLINC.COM | | |
| | PROPRIETARY AND CONFIDENTIAL THE INFORMATION CONTAINED IN THIS DRAWING IS THE SOLE PROPERTY OF LASERLINC, INC. ANY REPRODUCTION IN PART OR AS A WHOLE WITHOUT THE WRITTEN PERMISSION OF LASERLINC, INC. IS PROHIBITED. | INTERPRET GEOMETRIC TOLERANCING PER: ASME Y14.5 MATERIAL FINISH DO NOT SCALE DRAWING | DRAWN BY: MAM | | TITLE: 0130-0000-00 TLASER130S, SINGLE-AXIS SPLIT-HEAD MICROMETER OVERALL DIMENSIONS | |
| | | 63 RA SURFACE FINISH ALL FEATURES MUST MEET SPECIFICATION AFTER PLATING BEFORE POWDER-COAT IF PLATED OR POWDER-COATED SEE FINISH | | SIZE B | DWG. NO. 0130-0000-00 | REV D |
| | | SCALE: 1:2 | | SHEET 3 OF 3 | | |