

8

7

6

5

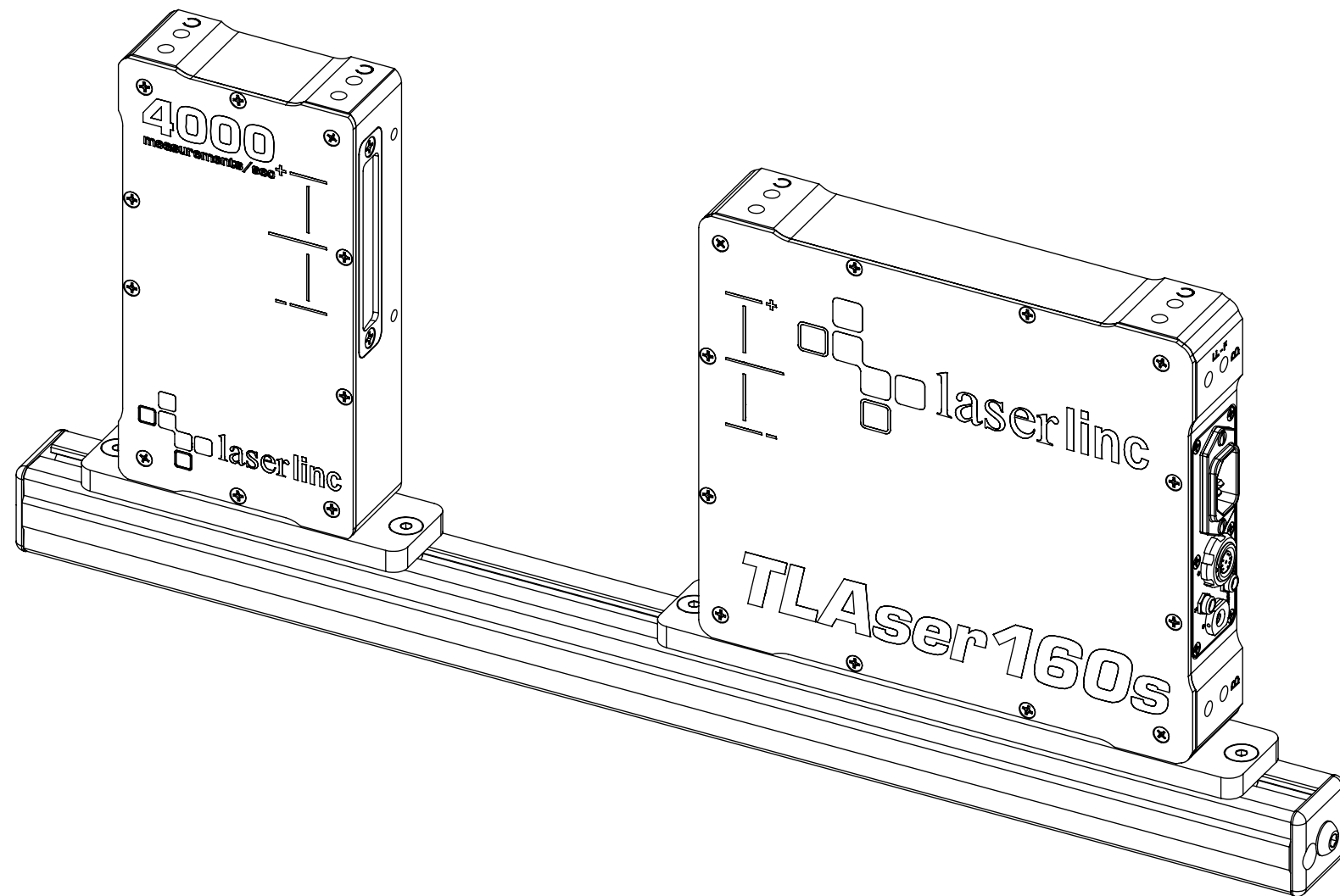
4

3

2

1

ZONE		REV.	DESCRIPTION	DATE	APPROVED
		A	Check-In	2/19/2013	MAM



# MOUNTING RAIL FOR TLASER 160 MICROMETER OVERALL DIMENSIONS

## INDEX

- (1) COVER PAGE
- (2) FIXTURE DIMENSIONS
- (3) MOUNTED DIMENSIONS

<b>GENERAL FINISH NOTE</b>		UNLESS OTHERWISE SPECIFIED:		NAME	DATE
DE-BURR AND BREAK ALL SHARP EDGES BEFORE FINISH AND/OR SHIPPING		DIMENSIONS ARE IN INCHES TOLERANCES: ANGLES ±.25 TWO PLACE DECIMAL ±0.010 THREE PLACE DECIMAL ±0.005 FOUR PLACE DECIMAL ±0.0005 UNMARKED FILLETS/CHAMFER .06 DE-BURR ALL PARTS		DRAWN BY:	MAM 11/6/2019
PROPRIETARY AND CONFIDENTIAL		INTERPRET GEOMETRIC TOLERANCING PER: ASME Y14.5			
THE INFORMATION CONTAINED IN THIS DRAWING IS THE SOLE PROPERTY OF LASERLINC, INC. ANY REPRODUCTION IN PART OR AS A WHOLE WITHOUT THE WRITTEN PERMISSION OF LASERLINC, INC. IS PROHIBITED.		MATERIAL		63 RA SURFACE FINISH ALL FEATURES MUST MEET SPECIFICATION AFTER PLATING BEFORE POWDER-COAT IF PLATED OR POWDER-COATED SEE FINISH	
		FINISH			
DO NOT SCALE DRAWING				LaserLinc, Inc. Phone: 888-707-4892 Info@laserlinc.com www.laserlinc.com	
				TITLE: 0160-0000-27 Mounting Rail for TLaser160 Micrometer Overall Dimensions	
		SIZE <b>B</b>		DWG. NO. 0160-0000-27	
				REV <b>A</b>	
				SCALE: 1:2.5	
				SHEET 1 OF 3	

8

7

6

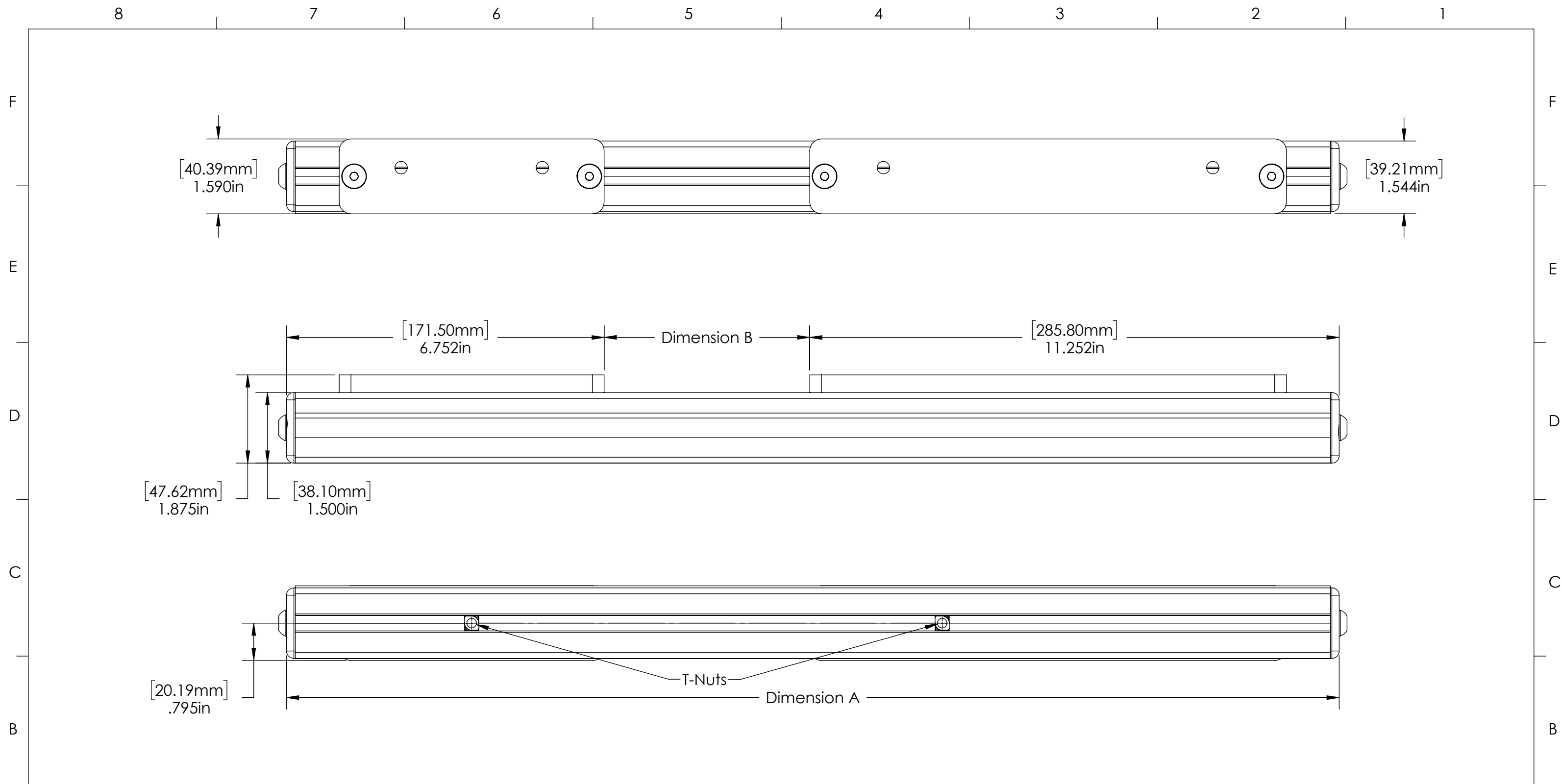
5

4

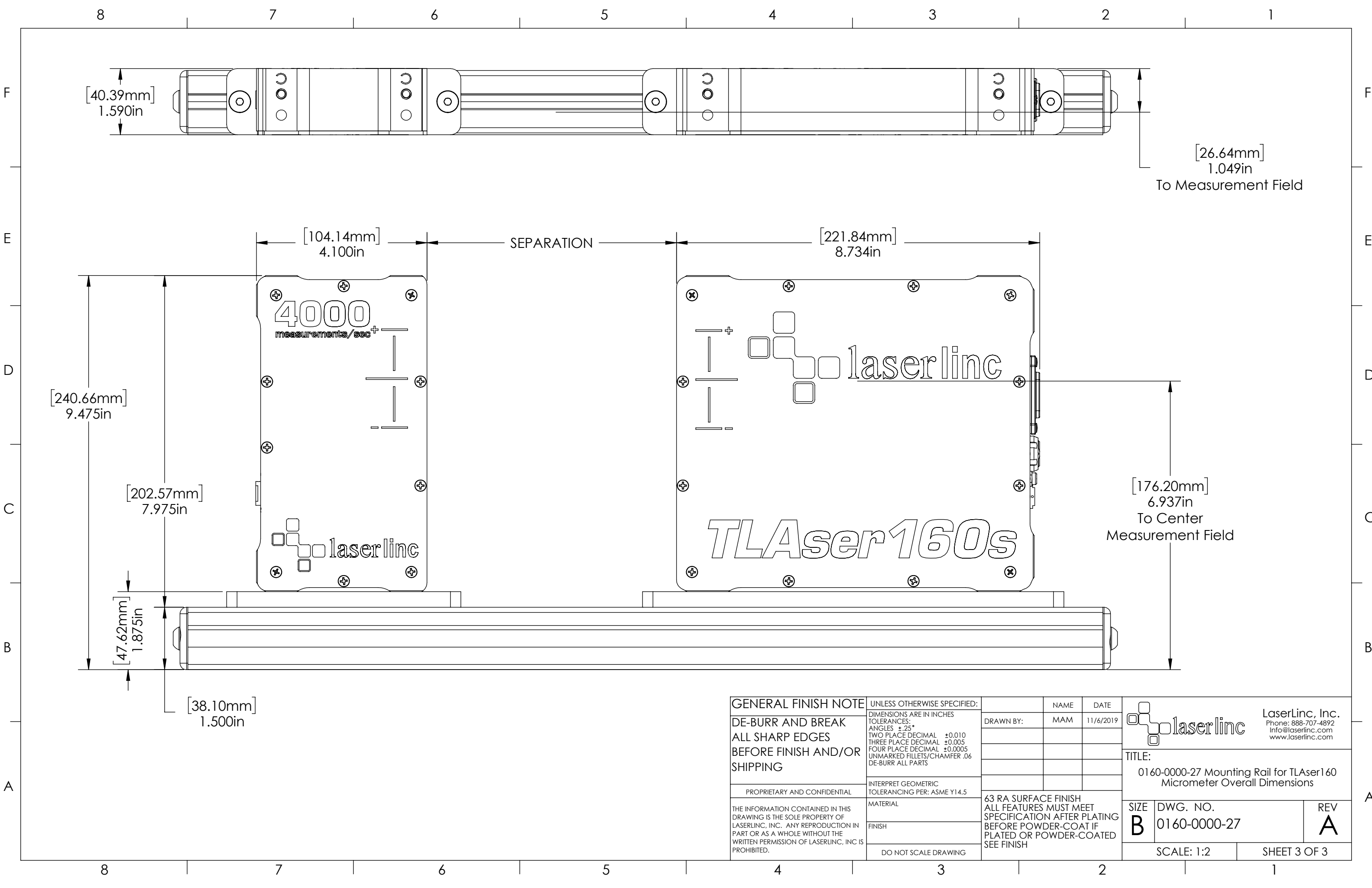
3

2

1



Separation	Dimension A	Dimension B	Assembly CAT Number	GENERAL FINISH NOTE	UNLESS OTHERWISE SPECIFIED:	NAME	DATE		
6	22.374in [568.30mm]	4.250in [107.95mm]	00160-27-6 Mounting Rail for TLaser160 Micrometer	DE-BURR AND BREAK ALL SHARP EDGES BEFORE FINISH AND/OR SHIPPING  PROPRIETARY AND CONFIDENTIAL  THE INFORMATION CONTAINED IN THIS DRAWING IS THE SOLE PROPERTY OF LASERLINC, INC. ANY REPRODUCTION IN PART OR AS A WHOLE WITHOUT THE WRITTEN PERMISSION OF LASERLINC, INC. IS PROHIBITED.	DIMENSIONS ARE IN INCHES TOLERANCES: ANGLES ±.25° TWO PLACE DECIMAL ±0.010 THREE PLACE DECIMAL ±0.005 FOUR PLACE DECIMAL ±0.0005 UNMARKED FILLETS/CHAMFER .06 DE-BURR ALL PARTS  INTERPRET GEOMETRIC TOLERANCING PER: ASME Y14.5  MATERIAL  FINISH  DO NOT SCALE DRAWING	DRAWN BY:	MAM	11/6/2019	
8	24.374in [619.10mm]	6.250in [158.75mm]	00160-27-8 Mounting Rail for TLaser160 Micrometer			laserlinc LaserLinc, Inc. Phone: 888-707-4892 Info@laserlinc.com www.laserlinc.com	TITLE:	0160-0000-27 Mounting Rail for TLaser160 Micrometer Overall Dimensions	
10	26.374in [669.90mm]	8.250in [209.55mm]	00160-27-10 Mounting Rail for TLaser160 Micrometer				SIZE	DWG. NO.	REV
12	28.374in [720.70mm]	10.250in [260.35mm]	00160-27-12 Mounting Rail for TLaser160 Micrometer			B	0160-0000-27	A	
14	30.374in [771.50mm]	12.250in [311.15mm]	00160-27-14 Mounting Rail for TLaser160 Micrometer			SCALE: 1:2		SHEET 2 OF 3	



[40.39mm]  
1.590in

[26.64mm]  
1.049in  
To Measurement Field

[104.14mm]  
4.100in

SEPARATION

[221.84mm]  
8.734in

[240.66mm]  
9.475in

[202.57mm]  
7.975in

[176.20mm]  
6.937in  
To Center  
Measurement Field

[47.62mm]  
1.875in

[38.10mm]  
1.500in

<b>GENERAL FINISH NOTE</b> DE-BURR AND BREAK ALL SHARP EDGES BEFORE FINISH AND/OR SHIPPING  PROPRIETARY AND CONFIDENTIAL  THE INFORMATION CONTAINED IN THIS DRAWING IS THE SOLE PROPERTY OF LASERLINC, INC. ANY REPRODUCTION IN PART OR AS A WHOLE WITHOUT THE WRITTEN PERMISSION OF LASERLINC, INC. IS PROHIBITED.	UNLESS OTHERWISE SPECIFIED: DIMENSIONS ARE IN INCHES TOLERANCES: ANGLES ±.25 TWO PLACE DECIMAL ±0.010 THREE PLACE DECIMAL ±0.005 FOUR PLACE DECIMAL ±0.0005 UNMARKED FILLETS/CHAMFER .06 DE-BURR ALL PARTS	NAME MAM DATE 11/6/2019	 LaserLinc, Inc. Phone: 888-707-4892 info@laserlinc.com www.laserlinc.com
	INTERPRET GEOMETRIC TOLERANCING PER: ASME Y14.5	DRAWN BY:    	
	MATERIAL  FINISH  DO NOT SCALE DRAWING	63 RA SURFACE FINISH ALL FEATURES MUST MEET SPECIFICATION AFTER PLATING BEFORE POWDER-COAT IF PLATED OR POWDER-COATED SEE FINISH	TITLE: 0160-0000-27 Mounting Rail for TLAser160 Micrometer Overall Dimensions
	SIZE <b>B</b>	DWG. NO. 0160-0000-27	REV <b>A</b>