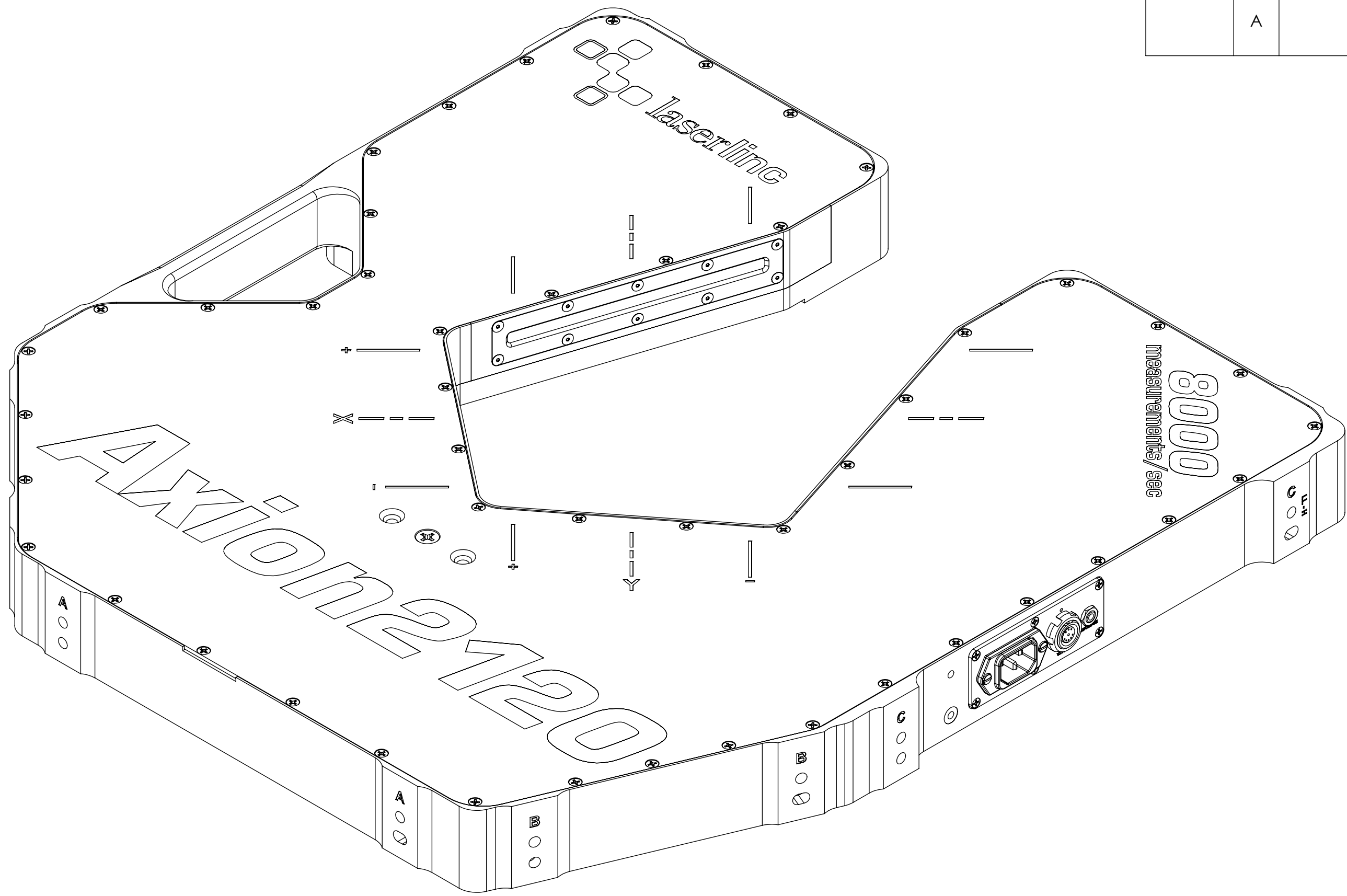


REVISIONS				
ZONE	REV.	DESCRIPTION	DATE	APPROVED
	A	CHECK-IN	11/15/2011	MAM



2120-0000-00
TLASER2120 DUAL-AXIS MICROMETER
OVERALL MOUNTING DIMENSIONS

NOTES:

- APPROX. WEIGHT: 38 LBS [17.2KG]
- POWER REQUIREMENTS: 100-240 VAC 50/60 HZ 50 W. MAX
- MEASUREMENTS PER SECOND (Hz): 3200 [1600 PER AXIS]8000 [4000 PER AXIS] (OPTIONAL)
- RESOLUTION: .000001" [.025µm]
- REPEATABILITY² UN-AVERAGED: ±.0022" [±56µm]
- REPEATABILITY² TWO SECOND: ±.00004" [±1.0µm]

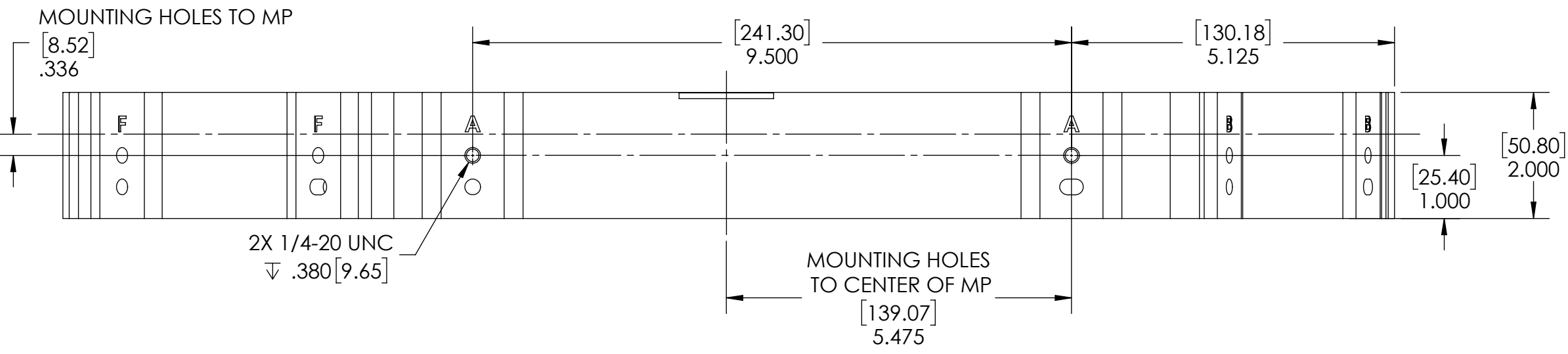
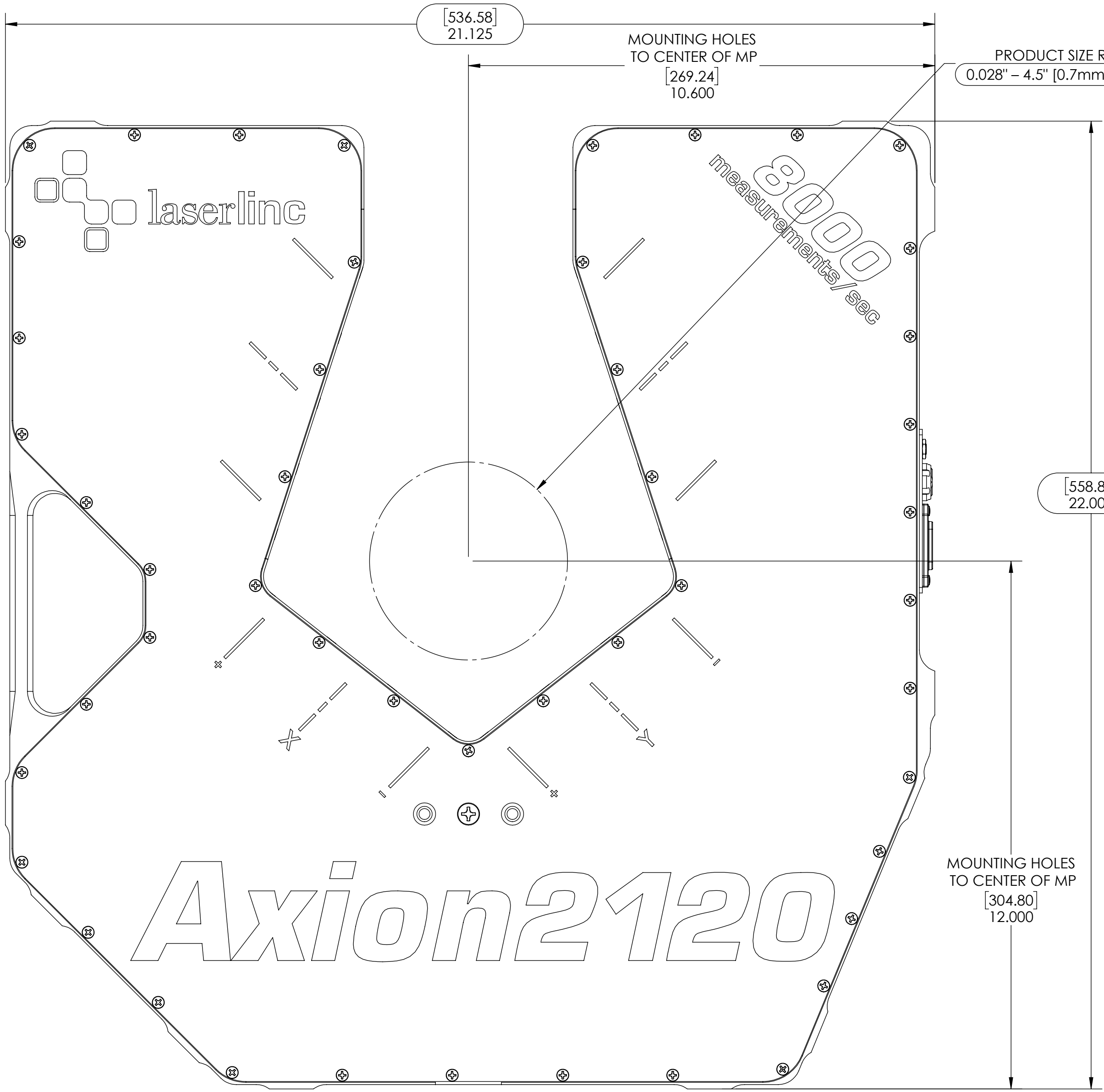
INDEX

(1)	COVER PAGE
(2)	DIMENSIONS
(3)	DIMENSIONS 2
(4)	DIMENSIONS 3

GENERAL FINISH NOTE		UNLESS OTHERWISE SPECIFIED:		NAME	DATE
DE-BURR AND BREAK ALL SHARP EDGES BEFORE FINISH AND/OR SHIPPING		DIMENSIONS ARE IN INCHES		DRAWN BY:	MAM
PROPRIETARY AND CONFIDENTIAL		TOLERANCES:			11/15/2011
THE INFORMATION CONTAINED IN THIS DRAWING IS THE SOLE PROPERTY OF LASERLINC, INC. ANY REPRODUCTION IN PART OR AS A WHOLE WITHOUT THE WRITTEN PERMISSION OF LASERLINC, INC IS PROHIBITED.		ANGULAR: MACH ± BEND ±			
		TWO PLACE DECIMAL: ±0.010			
		THREE PLACE DECIMAL: ±0.005			
		FOUR PLACE DECIMAL: ±0.0005			
		ANGLES: ±.25°			
		UNMARKED FILLETS/ROUNDS R.0625			
		DE-BURR ALL PARTS			
		INTERPRET GEOMETRIC TOLERANCING PER:			
		MATERIAL			
		FINISH			
		DO NOT SCALE DRAWING			
		63 RA SURFACE FINISH ALL FEATURES MUST MEET SPECIFICATION AFTER PLATING BEFORE POWDER-COAT IF PLATED OR POWDER-COATED			
		SEE FINISH MACHINE ALL SURFACES			
		TITLE:		2120-0000-00 TLASER2120 Dual-Axis Micrometer Overall Mounting Dimensions	
		SIZE		DWG. NO. 2120-0000-00	
		REV		A	
		SCALE: 1:2		SHEET 1 OF 4	

8 7 6 5 4 3 2 1

H G F E D C B A



NOTES:
• MP = MEASUREMENT PLANE

GENERAL FINISH NOTE
DE-BURR AND BREAK
ALL SHARP EDGES
BEFORE FINISH AND/OR
SHIPPING

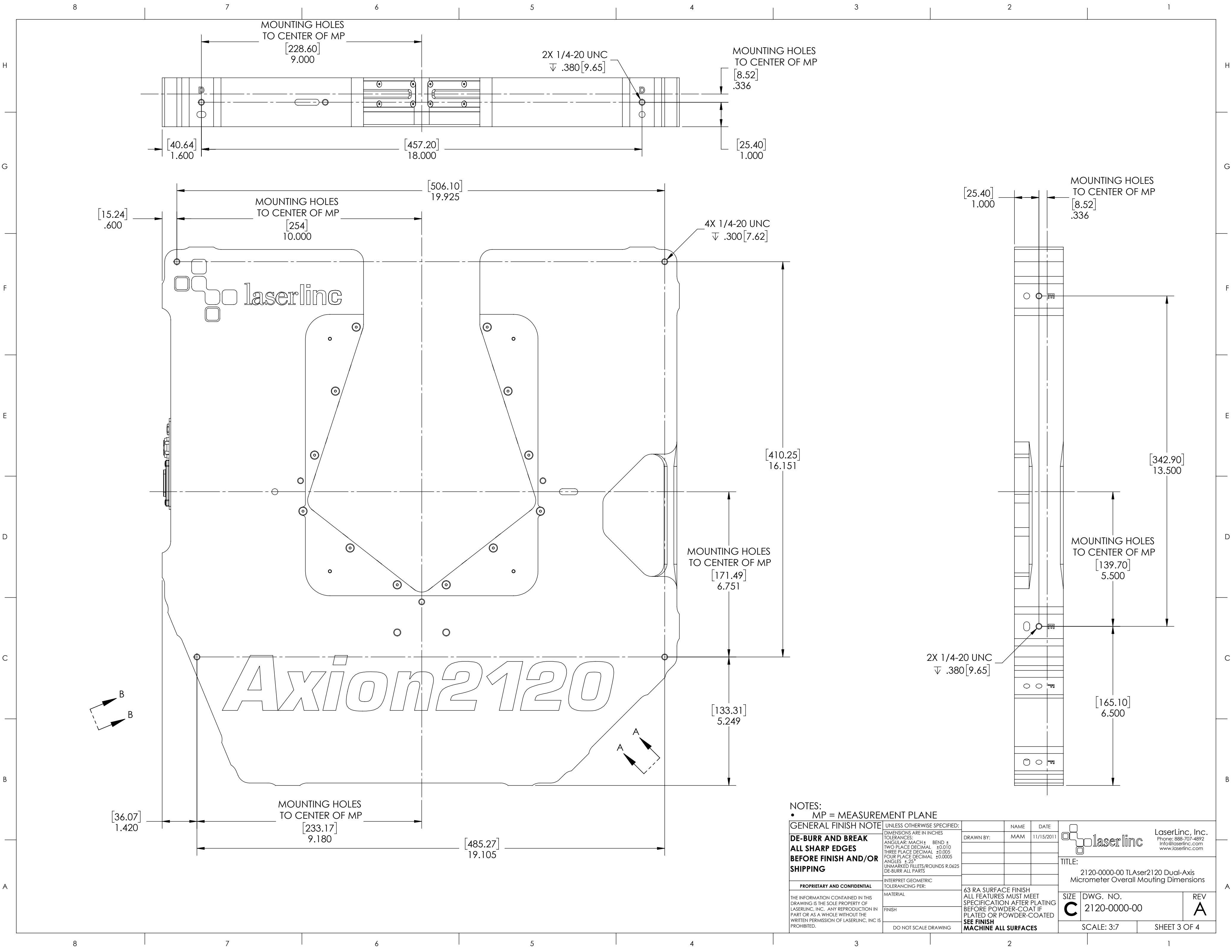
UNLESS OTHERWISE SPECIFIED:
DIMENSIONS ARE IN INCHES
TOLERANCES:
ANGULAR: MACH ± BEND ±
TWO PLACE DECIMAL: ±0.010
THREE PLACE DECIMAL: ±0.005
FOUR PLACE DECIMAL: ±0.0005
ANGLES ±.25°
UNMARKED FILLETS/ROUNDS R.0625
DE-BURR ALL PARTS

PROPRIETARY AND CONFIDENTIAL
THE INFORMATION CONTAINED IN THIS
DRAWING IS THE SOLE PROPERTY OF
LASERLINC, INC. ANY REPRODUCTION IN
PART OR AS A WHOLE WITHOUT THE
WRITTEN PERMISSION OF LASERLINC, INC IS
PROHIBITED.

INTERPRET GEOMETRIC
TOLERANCING PER:
MATERIAL
FINISH
DO NOT SCALE DRAWING

NAME	DATE	LaserLinc, Inc. Phone: 888-707-4892 Info@laserlinc.com www.laserlinc.com
DRAWN BY: MAM	11/15/2011	
TITLE:		2120-0000-00 TLaser2120 Dual-Axis Micrometer Overall Mounting Dimensions
SIZE	DWG. NO.	REV
C	2120-0000-00	A
SCALE: 1:2		SHEET 2 OF 4

8 7 6 5 4 3 2 1



laserline

Axion2120

NOTES:
 • MP = MEASUREMENT PLANE

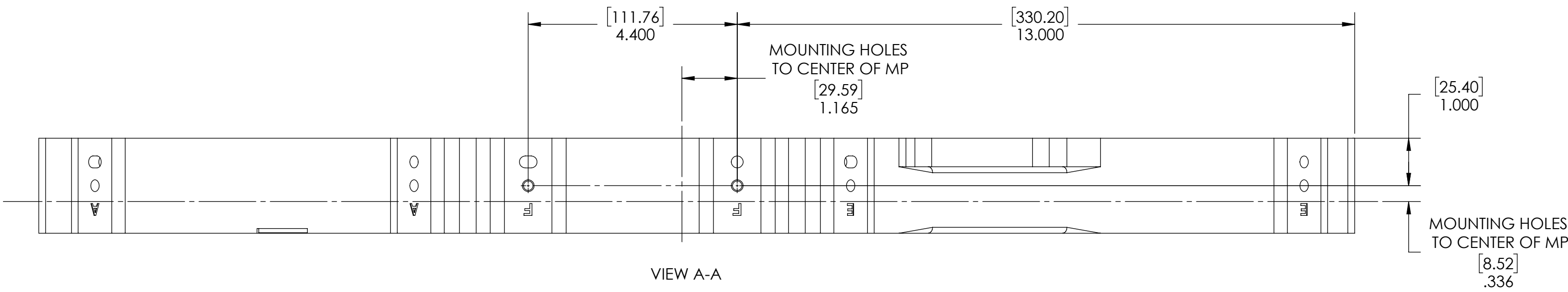
GENERAL FINISH NOTE
DE-BURR AND BREAK
ALL SHARP EDGES
BEFORE FINISH AND/OR
SHIPPING

UNLESS OTHERWISE SPECIFIED:
 DIMENSIONS ARE IN INCHES
 TOLERANCES:
 ANGULAR: MACH ± BEND ±
 TWO PLACE DECIMAL ±0.010
 THREE PLACE DECIMAL ±0.005
 FOUR PLACE DECIMAL ±0.0005
 ANGLES ±.25°
 UNMARKED FILLETS/ROUNDS R.0625
 DE-BURR ALL PARTS

PROPRIETARY AND CONFIDENTIAL
 THE INFORMATION CONTAINED IN THIS DRAWING IS THE SOLE PROPERTY OF LASERLINE, INC. ANY REPRODUCTION IN PART OR AS A WHOLE WITHOUT THE WRITTEN PERMISSION OF LASERLINE, INC IS PROHIBITED.

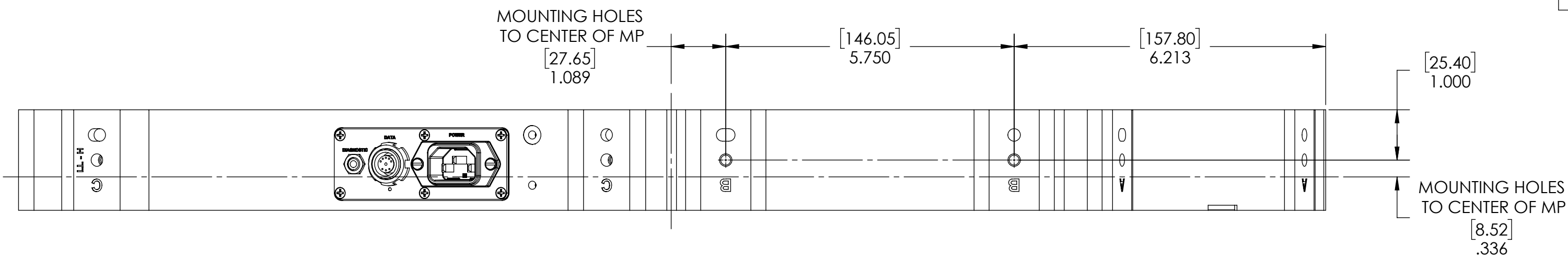
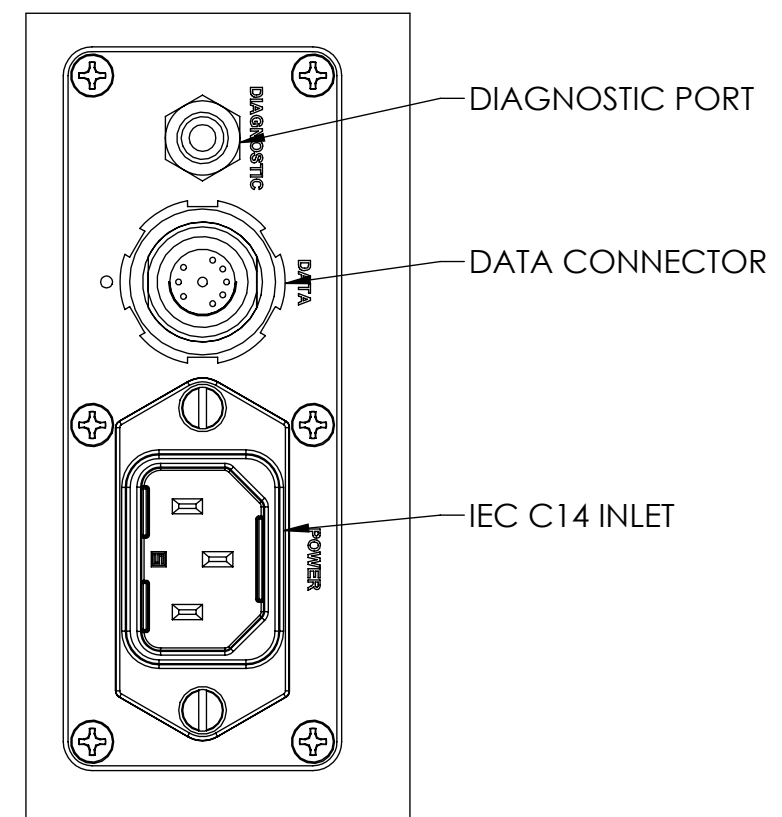
INTERPRET GEOMETRIC TOLERANCING PER:
 MATERIAL
 FINISH
 DO NOT SCALE DRAWING

NAME	MAM	DATE	11/15/2011
LaserLine, Inc. Phone: 888-707-4892 Info@laserline.com www.laserline.com			
TITLE: 2120-0000-00 TLaser2120 Dual-Axis Micrometer Overall Mounting Dimensions			
SIZE	DWG. NO.	REV	
C	2120-0000-00	A	
SCALE: 3:7		SHEET 3 OF 4	



VIEW A-A

PANEL CONNECTIONS



VIEW B-B

NOTES:
 • MP = MEASUREMENT PLANE

GENERAL FINISH NOTE		UNLESS OTHERWISE SPECIFIED: DIMENSIONS ARE IN MILLIMETERS TOLERANCES: ANGULAR: MACH ± BEND ± TWO PLACE DECIMAL ±0.25 THREE PLACE DECIMAL ±0.125 FOUR PLACE DECIMAL ±0.0125 ANGLES ±.25° UNMARKED FILLETS/ROUNDS R1.588 DE-BURR ALL PARTS	DRAWN BY: MAM	NAME: MAM	DATE: 11/15/2011
DE-BURR AND BREAK ALL SHARP EDGES BEFORE FINISH AND/OR SHIPPING		INTERPRET GEOMETRIC TOLERANCING PER:	63 RA SURFACE FINISH ALL FEATURES MUST MEET SPECIFICATION AFTER PLATING BEFORE POWDER-COAT IF PLATED OR POWDER-COATED SEE FINISH MACHINE ALL SURFACES		
PROPRIETARY AND CONFIDENTIAL		MATERIAL:	THE INFORMATION CONTAINED IN THIS DRAWING IS THE SOLE PROPERTY OF LASERLINC, INC. ANY REPRODUCTION IN PART OR AS A WHOLE WITHOUT THE WRITTEN PERMISSION OF LASERLINC, INC IS PROHIBITED.		
		FINISH:	DO NOT SCALE DRAWING		
		TITLE: 2120-0000-00 TLaser2120 Dual-Axis Micrometer Overall Mounting Dimensions		SIZE: C	DWG. NO.: 2120-0000-00
		SCALE: 1:2		REV A SHEET 4 OF 4	

