

8

7

6

5

4

3

2

1

REVISIONS				
ZONE	REV.	DESCRIPTION	DATE	APPROVED
	A	Check-In	12/18/2014	MAM

F

F

E

E

D

D

C

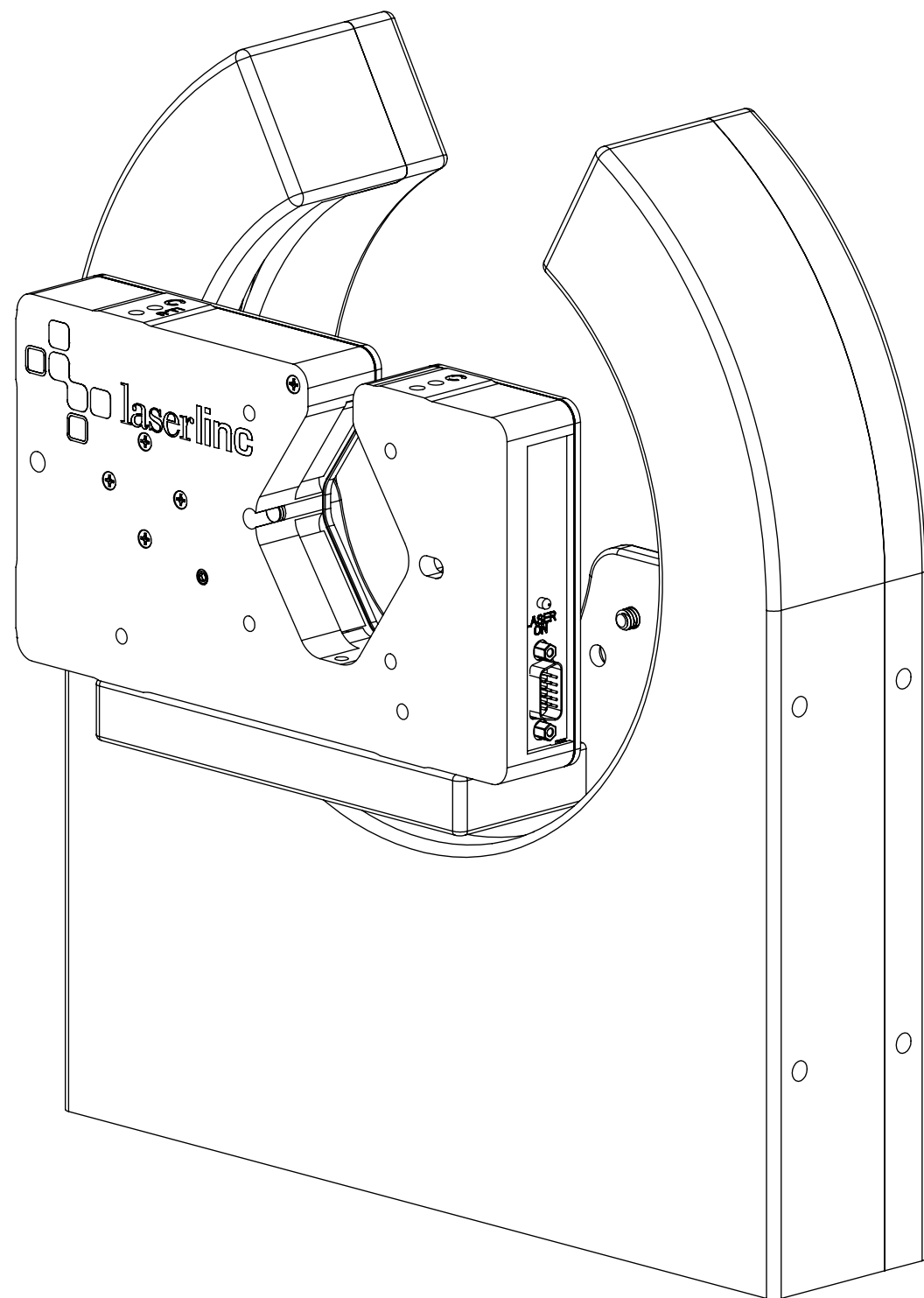
C

B

B

A


A



MANUAL PROFILEVU-R FOR TLASER222 MICROMETER OVERALL DIMENSIONS

INDEX

- (1) COVER PAGE
- (2) FIXTURE DIMENSIONS
- (3) MOUNTED DIMENSIONS

GENERAL FINISH NOTE		UNLESS OTHERWISE SPECIFIED:		NAME	DATE	 LASERLINC, INC. PHONE: 888-707-4892 INFO@LASERLINC.COM WWW.LASERLINC.COM
DE-BURR AND BREAK ALL SHARP EDGES BEFORE FINISH AND/OR SHIPPING		DIMENSIONS ARE IN INCHES TOLERANCES: ANGLES ±.25° TWO PLACE DECIMAL ±0.010 THREE PLACE DECIMAL ±0.005 FOUR PLACE DECIMAL ±0.0005 UNMARKED FILLETS/CHAMFER .06 DE-BURR ALL PARTS		DRAWN BY:	EMM	
PROPRIETARY AND CONFIDENTIAL THE INFORMATION CONTAINED IN THIS DRAWING IS THE SOLE PROPERTY OF LASERLINC, INC. ANY REPRODUCTION IN PART OR AS A WHOLE WITHOUT THE WRITTEN PERMISSION OF LASERLINC, INC. IS PROHIBITED.		INTERPRET GEOMETRIC TOLERANCING PER: ASME Y14.5 MATERIAL FINISH DO NOT SCALE DRAWING		63 RA SURFACE FINISH ALL FEATURES MUST MEET SPECIFICATION AFTER PLATING BEFORE POWDER-COAT IF PLATED OR POWDER-COATED SEE FINISH		TITLE: 8103-0001-82 MANUAL PROFILEVU-R FOR TLASER222 MICROMETER OVERALL DIMENSIONS
				SIZE	DWG. NO.	REV
				B	00222-82	A
				SCALE: 1:2		SHEET 1 OF 3

8

7

6

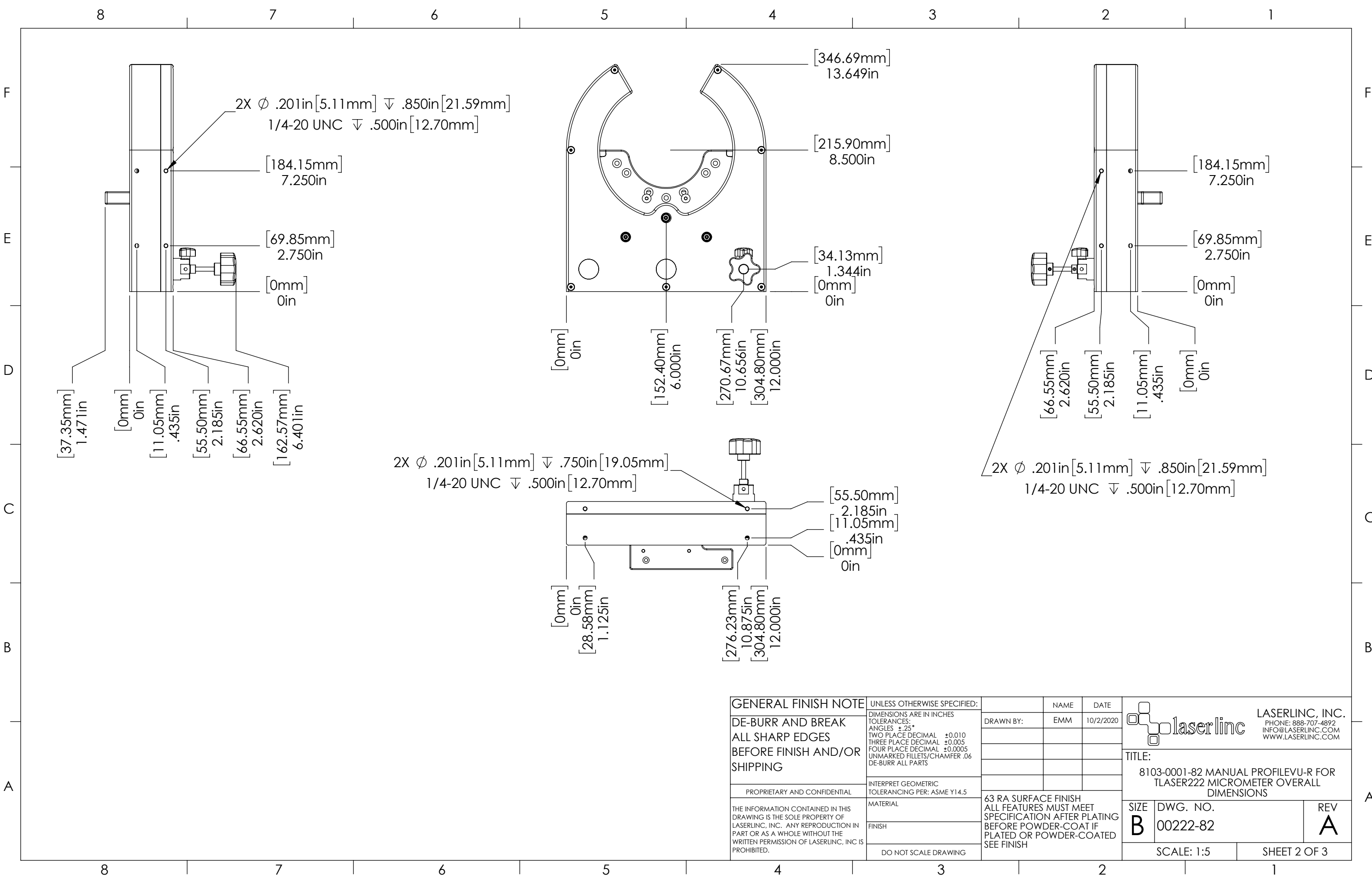
5

4

3

2

1



2X ϕ .201in [5.11mm] ∇ .850in [21.59mm]
 1/4-20 UNC ∇ .500in [12.70mm]

[346.69mm]
 13.649in

[215.90mm]
 8.500in

[34.13mm]
 1.344in
 [0mm]
 0in

[0mm]
 0in
 [152.40mm]
 6.000in
 [270.67mm]
 10.656in
 [304.80mm]
 12.000in

[184.15mm]
 7.250in

[69.85mm]
 2.750in


[0mm]
 0in

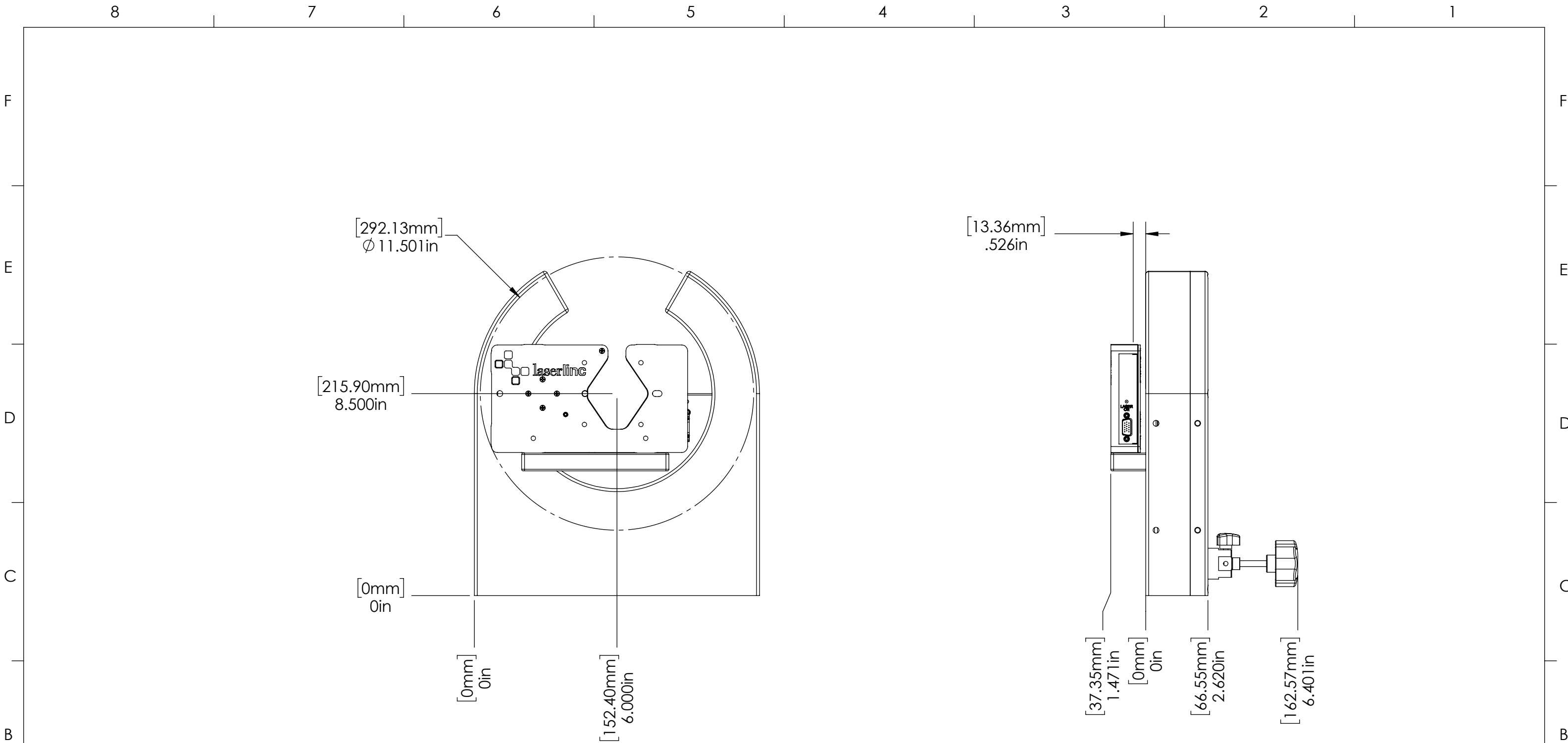
[66.55mm]
 2.620in
 [55.50mm]
 2.185in
 [11.05mm]
 .435in
 [0mm]
 0in


2X ϕ .201in [5.11mm] ∇ .850in [21.59mm]
 1/4-20 UNC ∇ .500in [12.70mm]

2X ϕ .201in [5.11mm] ∇ .750in [19.05mm]
 1/4-20 UNC ∇ .500in [12.70mm]

[55.50mm]
 2.185in
 [11.05mm]
 .435in
 [0mm]
 0in
 [0mm]
 0in
 [28.58mm]
 1.125in
 [276.23mm]
 10.875in
 [304.80mm]
 12.000in

GENERAL FINISH NOTE DE-BURR AND BREAK ALL SHARP EDGES BEFORE FINISH AND/OR SHIPPING PROPRIETARY AND CONFIDENTIAL THE INFORMATION CONTAINED IN THIS DRAWING IS THE SOLE PROPERTY OF LASERLINC, INC. ANY REPRODUCTION IN PART OR AS A WHOLE WITHOUT THE WRITTEN PERMISSION OF LASERLINC, INC IS PROHIBITED.	UNLESS OTHERWISE SPECIFIED: DIMENSIONS ARE IN INCHES TOLERANCES: ANGLES \pm .25 TWO PLACE DECIMAL \pm 0.010 THREE PLACE DECIMAL \pm 0.005 FOUR PLACE DECIMAL \pm 0.0005 UNMARKED FILLETS/CHAMFER .06 DE-BURR ALL PARTS	NAME DATE	 LASERLINC, INC. PHONE: 888-707-4892 INFO@LASERLINC.COM WWW.LASERLINC.COM				
	INTERPRET GEOMETRIC TOLERANCING PER: ASME Y14.5	DRAWN BY: EMM 10/2/2020		TITLE: 8103-0001-82 MANUAL PROFILEVU-R FOR TLASER222 MICROMETER OVERALL DIMENSIONS			
	MATERIAL	63 RA SURFACE FINISH ALL FEATURES MUST MEET SPECIFICATION AFTER PLATING BEFORE POWDER-COAT IF PLATED OR POWDER-COATED SEE FINISH		SIZE B	DWG. NO. 00222-82	REV A	
	FINISH DO NOT SCALE DRAWING	SCALE: 1:5		SHEET 2 OF 3			



GENERAL FINISH NOTE		UNLESS OTHERWISE SPECIFIED:		NAME	DATE
DE-BURR AND BREAK ALL SHARP EDGES BEFORE FINISH AND/OR SHIPPING		DIMENSIONS ARE IN INCHES TOLERANCES: ANGLES ±.25° TWO PLACE DECIMAL ±0.010 THREE PLACE DECIMAL ±0.005 FOUR PLACE DECIMAL ±0.0005 UNMARKED FILLETS/CHAMFER .06 DE-BURR ALL PARTS		DRAWN BY:	EMM 10/2/2020
PROPRIETARY AND CONFIDENTIAL		INTERPRET GEOMETRIC TOLERANCING PER: ASME Y14.5			
THE INFORMATION CONTAINED IN THIS DRAWING IS THE SOLE PROPERTY OF LASERLINC, INC. ANY REPRODUCTION IN PART OR AS A WHOLE WITHOUT THE WRITTEN PERMISSION OF LASERLINC, INC. IS PROHIBITED.		MATERIAL		63 RA SURFACE FINISH ALL FEATURES MUST MEET SPECIFICATION AFTER PLATING BEFORE POWDER-COAT IF PLATED OR POWDER-COATED SEE FINISH	
		FINISH			
		DO NOT SCALE DRAWING			
				 LASERLINC, INC. PHONE: 888-707-4892 INFO@LASERLINC.COM WWW.LASERLINC.COM	
				TITLE: 8103-0001-82 MANUAL PROFILEVU-R FOR TLASER222 MICROMETER OVERALL DIMENSIONS	
SIZE B		DWG. NO. 00222-82		REV A	
				SCALE: 1:4	
				SHEET 3 OF 3	