

8

7

6

5

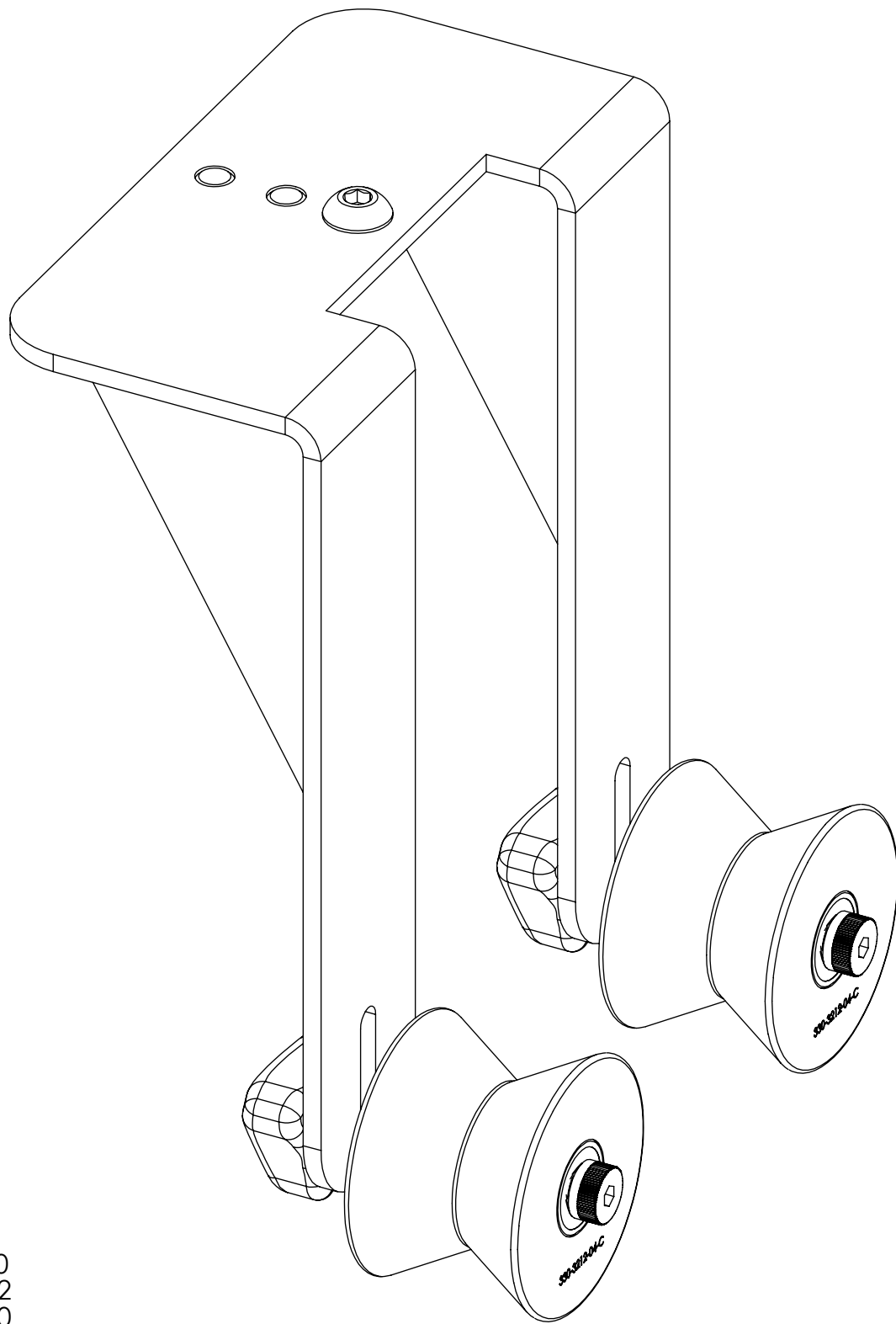
4

3

2

1


REVISIONS				
ZONE	REV.	DESCRIPTION	DATE	APPROVED
	A	Check-In	3/30/2015	MAM
	B	PART LENGTH CHANGED	12/16/2020	EMM



# X30 MANUAL ADJUST MOUNT ROLLER GUIDE OVERALLS

## INDEX

- (1) COVER PAGE
- (2) DIMENSIONS AXION230
- (3) DIMENSIONS TRITON312
- (4) DIMENSIONS TRITON330

<b>GENERAL FINISH NOTE</b>		UNLESS OTHERWISE SPECIFIED:		NAME	DATE
DE-BURR AND BREAK ALL SHARP EDGES BEFORE FINISH AND/OR SHIPPING		DIMENSIONS ARE IN INCHES TOLERANCES: ANGULAR: MACH ± BEND ± TWO PLACE DECIMAL ±0.010 THREE PLACE DECIMAL ±0.005 FOUR PLACE DECIMAL ±0.0005 ANGLES ±.25° UNMARKED FILLETS/ROUNDS R.0625 DE-BURR ALL PARTS		DRAWN BY:	EMM 12/16/2020
PROPRIETARY AND CONFIDENTIAL		INTERPRET GEOMETRIC TOLERANCING PER:			
THE INFORMATION CONTAINED IN THIS DRAWING IS THE SOLE PROPERTY OF LASERLINC, INC. ANY REPRODUCTION IN PART OR AS A WHOLE WITHOUT THE WRITTEN PERMISSION OF LASERLINC, INC IS PROHIBITED.		MATERIAL		63 RA SURFACE FINISH ALL FEATURES MUST MEET SPECIFICATION AFTER PLATING BEFORE POWDER-COAT IF PLATED OR POWDER-COATED SEE FINISH MACHINE ALL SURFACES	
		FINISH			
DO NOT SCALE DRAWING					
 <b>LaserLinc, Inc.</b> Phone: 888-707-4892 Info@laserlinc.com www.laserlinc.com			TITLE:		
			0200-0000-66 X30 Manual Adjust Mount Roller Guide Overalls		
SIZE	DWG. NO.	REV			
<b>B</b>	0200-0000-66	<b>B</b>			
SCALE: 1:1		SHEET 1 OF 4			

8

7

6

5

4

3

2

1

F

E

D

C

B

A

F

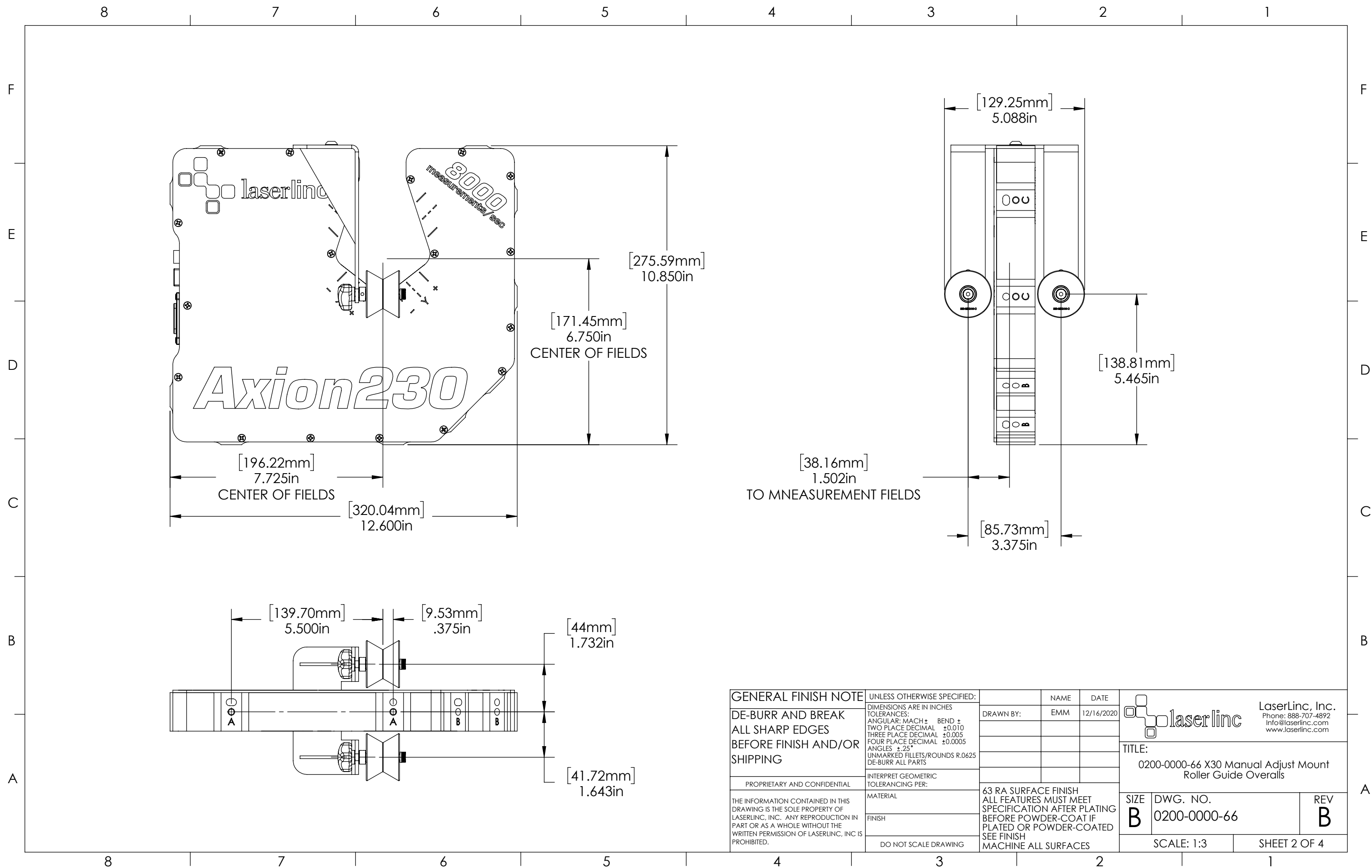
E

D

C

B

A



F

E

D

C

B

A

F

E

D

C

B

A

8

7

6

5

4

3

2

1

8

7

6

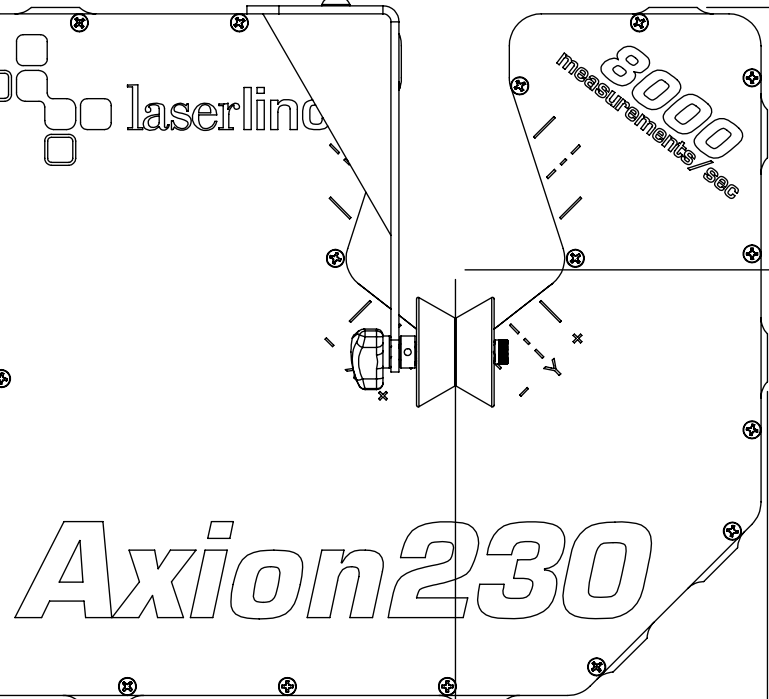
5

4

3

2

1

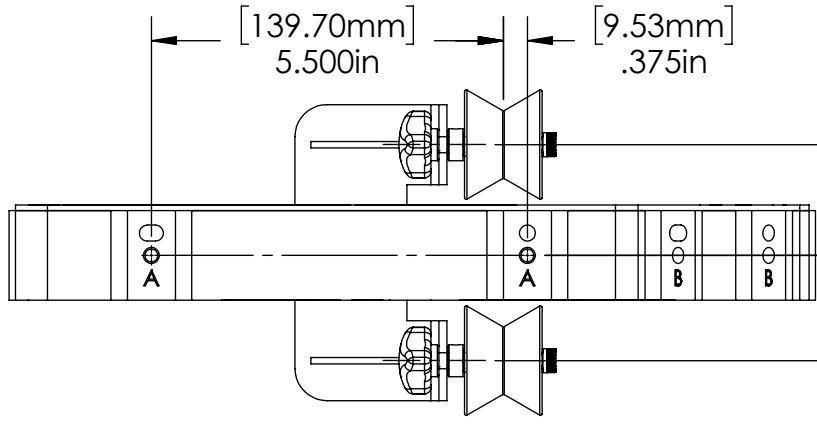


[196.22mm]  
7.725in  
CENTER OF FIELDS

[320.04mm]  
12.600in

[171.45mm]  
6.750in  
CENTER OF FIELDS

[275.59mm]  
10.850in

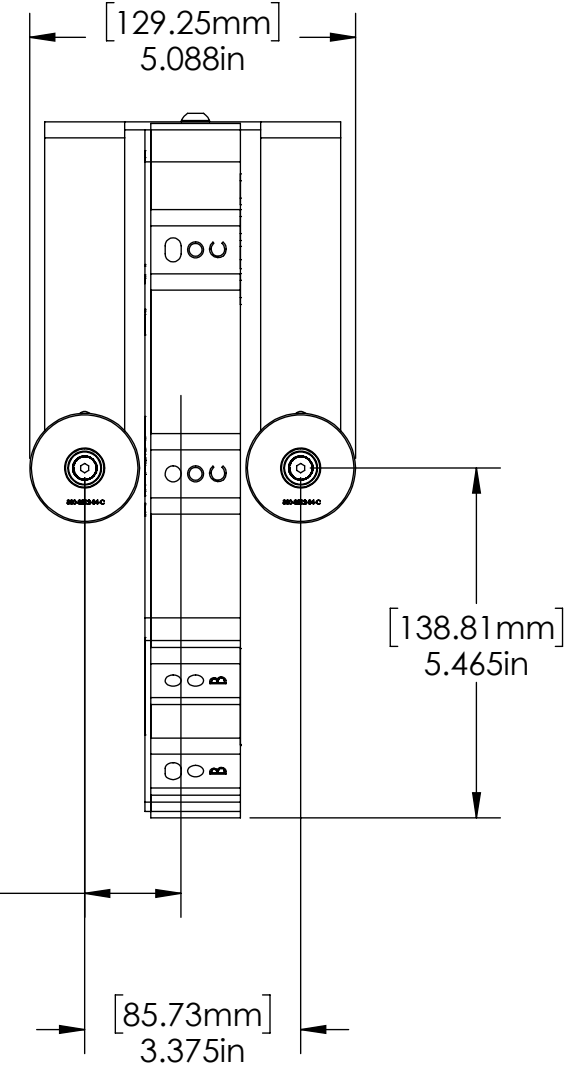


[139.70mm]  
5.500in

[9.53mm]  
.375in

[44mm]  
1.732in

[41.72mm]  
1.643in



[129.25mm]  
5.088in

[138.81mm]  
5.465in

[85.73mm]  
3.375in

[38.16mm]  
1.502in  
TO MEASUREMENT FIELDS

<b>GENERAL FINISH NOTE</b>		UNLESS OTHERWISE SPECIFIED:		NAME	DATE
DE-BURR AND BREAK ALL SHARP EDGES BEFORE FINISH AND/OR SHIPPING		DIMENSIONS ARE IN INCHES TOLERANCES: ANGULAR: MACH ± BEND ± TWO PLACE DECIMAL ±0.010 THREE PLACE DECIMAL ±0.005 FOUR PLACE DECIMAL ±0.0005 ANGLES ±.25° UNMARKED FILLETS/ROUNDS R.0625 DE-BURR ALL PARTS		DRAWN BY:	EMM 12/16/2020
PROPRIETARY AND CONFIDENTIAL		INTERPRET GEOMETRIC TOLERANCING PER:		TITLE: 0200-0000-66 X30 Manual Adjust Mount Roller Guide Overalls	
THE INFORMATION CONTAINED IN THIS DRAWING IS THE SOLE PROPERTY OF LASERLINC, INC. ANY REPRODUCTION IN PART OR AS A WHOLE WITHOUT THE WRITTEN PERMISSION OF LASERLINC, INC. IS PROHIBITED.		MATERIAL		SIZE <b>B</b>	
		FINISH		DWG. NO. 0200-0000-66	
		DO NOT SCALE DRAWING		REV <b>B</b>	
		63 RA SURFACE FINISH ALL FEATURES MUST MEET SPECIFICATION AFTER PLATING BEFORE POWDER-COAT IF PLATED OR POWDER-COATED SEE FINISH MACHINE ALL SURFACES		SCALE: 1:3	
				SHEET 2 OF 4	

