

REVISIONS				
ZONE	REV.	DESCRIPTION	DATE	APPROVED
	A	Check-In	1/13/2014	MAM

# PROFILEVU-R FOR TLASER260 MICROMETER


## INDEX

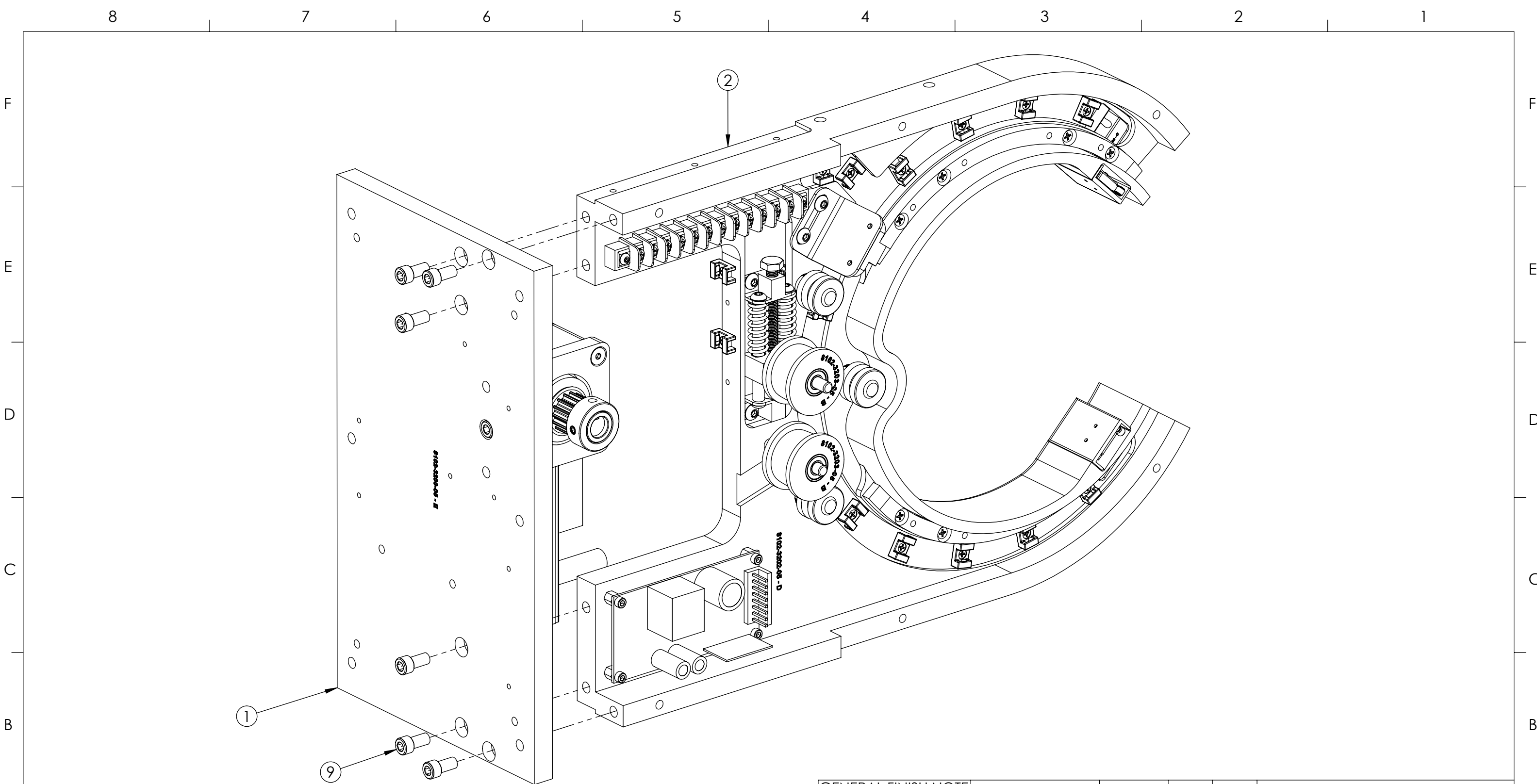
- (1) COVER PAGE
- (2) BOM TABLE
- (3) BASE
- (4) SUPPORT WALL & GAUGE PLATE
- (5) HOUSING
- (6) TLASER260 MOUNTED BOM

<b>GENERAL FINISH NOTE</b>		UNLESS OTHERWISE SPECIFIED:		NAME	DATE
DE-BURR AND BREAK ALL SHARP EDGES BEFORE FINISH AND/OR SHIPPING		DIMENSIONS ARE IN INCHES TOLERANCES: ANGLES ±.25 TWO PLACE DECIMAL ±0.010 THREE PLACE DECIMAL ±0.005 FOUR PLACE DECIMAL ±0.0005 UNMARKED FILLETS/CHAMFER .06 DE-BURR ALL PARTS		DRAWN BY:	MAM 1/13/2014
PROPRIETARY AND CONFIDENTIAL		INTERPRET GEOMETRIC TOLERANCING PER: ASME Y14.5			
THE INFORMATION CONTAINED IN THIS DRAWING IS THE SOLE PROPERTY OF LASERLINC, INC. ANY REPRODUCTION IN PART OR AS A WHOLE WITHOUT THE WRITTEN PERMISSION OF LASERLINC, INC. IS PROHIBITED.		MATERIAL		63 RA SURFACE FINISH ALL FEATURES MUST MEET SPECIFICATION AFTER PLATING BEFORE POWDER-COAT IF PLATED OR POWDER-COATED SEE FINISH	
		FINISH		TITLE: 8102-0004-81 PROFILEVU-R FOR TLASER260 MICROMETER	
DO NOT SCALE DRAWING				SIZE	DWG. NO.
				B	00260-81
				REV	A
				SCALE: 1:2	SHEET 1 OF 6



ITEM NO.	PART NUMBER	DESCRIPTION	Part Location	QTY.
1	8102-1100-01 ProfileVu 3G Base Assembly	REV B	-	1
2	8102-1101-01 ProfileVu 3G Support Wall	REV B	-	1
3	8102-1102-01 Gauge Rotation Plate Assembly	REV B	-	1
4	8102-1103-01 ProfileVu 3G Support Wall Cover Assembly	REV B	-	1
5	8102-1104-01 ProfileVu 3G Housing Assembly	REV B	-	1
6	8102-3200-16 ProfileVu 3G Housing Cover	REV A	37-D	1
7	0001-2208-04 1-4 - 20 x 3-8 L BHCS SS	McMaster-carr Part # 92949A535	19-F	2
8	0000-2238-04 6-32 x 1-4L FH PH SS	McMaster-Carr Part # 91771A144		6
9	4009-2206-04 1-4 - 20 x 1-2L SHCS SS	McMaster-Carr Part # 92196A537	19-C	6
10	4001-2215-04 6-32 x 5-16L BHCS SS	McMaster-Carr Part # 92949A145	17-P	7

<b>GENERAL FINISH NOTE</b> DE-BURR AND BREAK ALL SHARP EDGES BEFORE FINISH AND/OR SHIPPING	UNLESS OTHERWISE SPECIFIED: DIMENSIONS ARE IN INCHES TOLERANCES: ANGLES ±.25 TWO PLACE DECIMAL ±0.010 THREE PLACE DECIMAL ±0.005 FOUR PLACE DECIMAL ±0.0005 UNMARKED FILLETS/CHAMFER .06 DE-BURR ALL PARTS	NAME MAM	DATE 1/13/2014	 <b>LASERLINC, INC.</b> PHONE: 888-707-4892 INFO@LASERLINC.COM WWW.LASERLINC.COM
	PROPRIETARY AND CONFIDENTIAL	INTERPRET GEOMETRIC TOLERANCING PER: ASME Y14.5	TITLE: 8102-0004-81 PROFILEVU-R FOR TLASER260 MICROMETER	
THE INFORMATION CONTAINED IN THIS DRAWING IS THE SOLE PROPERTY OF LASERLINC, INC. ANY REPRODUCTION IN PART OR AS A WHOLE WITHOUT THE WRITTEN PERMISSION OF LASERLINC, INC IS PROHIBITED.	MATERIAL	63 RA SURFACE FINISH ALL FEATURES MUST MEET SPECIFICATION AFTER PLATING BEFORE POWDER-COAT IF PLATED OR POWDER-COATED SEE FINISH		SIZE <b>B</b>
	FINISH	DWG. NO. 00260-81		REV <b>A</b>
	DO NOT SCALE DRAWING	SCALE: 1:8		SHEET 2 OF 6



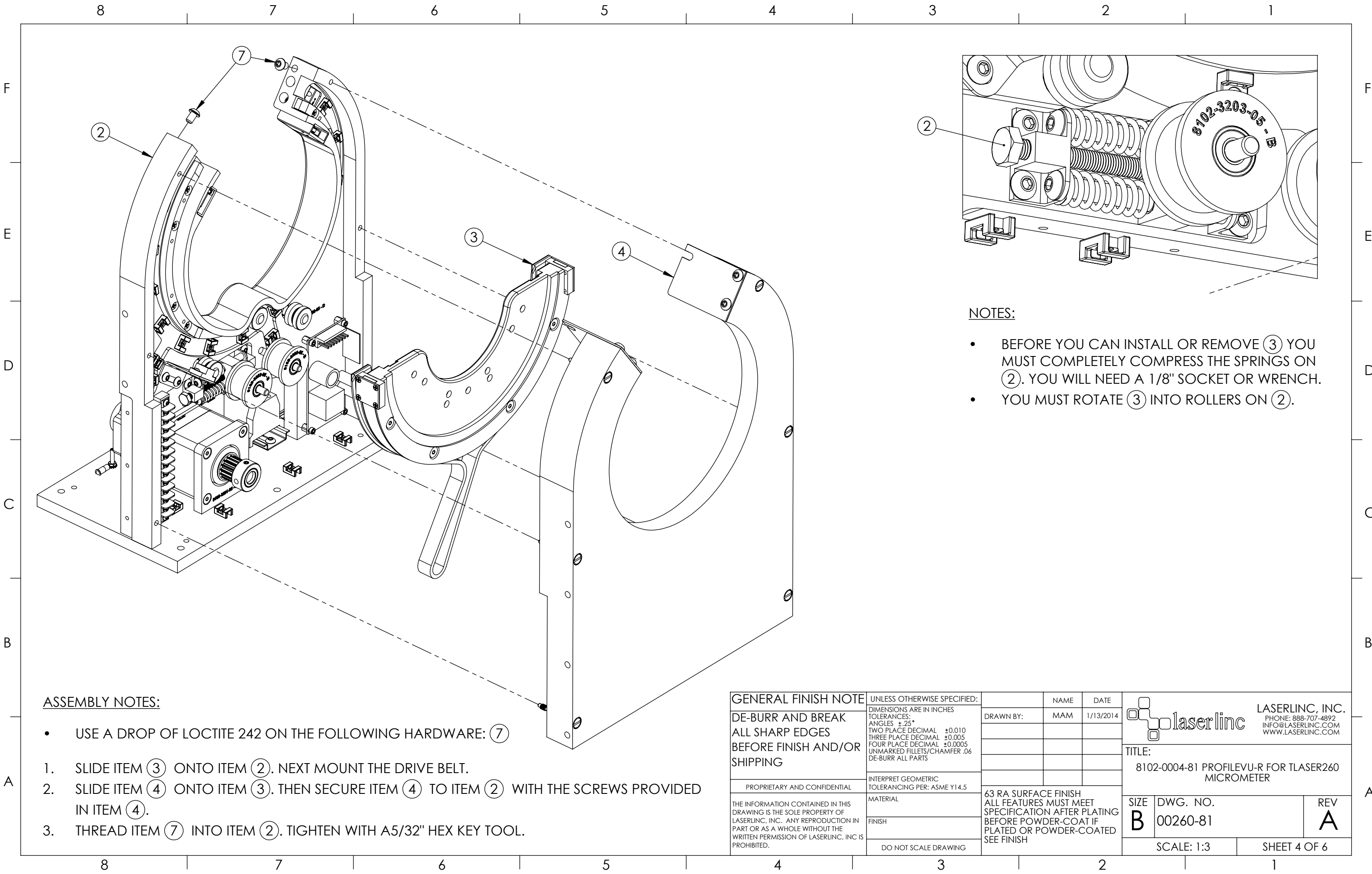
**ASSEMBLY NOTES:**

- USE A DROP OF LOCTITE 242 ON THE FOLLOWING HARDWARE: (9)
1. MOUNT ITEM (2) TO ITEM (1) WITH ITEM (9). TIGHTEN WITH A 3/16" HEX KEY TOOL.

<b>GENERAL FINISH NOTE</b> DE-BURR AND BREAK ALL SHARP EDGES BEFORE FINISH AND/OR SHIPPING	UNLESS OTHERWISE SPECIFIED: DIMENSIONS ARE IN INCHES TOLERANCES: ANGLES ±.25 TWO PLACE DECIMAL ±0.010 THREE PLACE DECIMAL ±0.005 FOUR PLACE DECIMAL ±0.0005 UNMARKED FILLETS/CHAMFER .06 DE-BURR ALL PARTS	NAME MAM	DATE 1/13/2014		<b>LASERLINC, INC.</b> PHONE: 888-707-4892 INFO@LASERLINC.COM WWW.LASERLINC.COM
	PROPRIETARY AND CONFIDENTIAL	INTERPRET GEOMETRIC TOLERANCING PER: ASME Y14.5	DRAWN BY:		
THE INFORMATION CONTAINED IN THIS DRAWING IS THE SOLE PROPERTY OF LASERLINC, INC. ANY REPRODUCTION IN PART OR AS A WHOLE WITHOUT THE WRITTEN PERMISSION OF LASERLINC, INC. IS PROHIBITED.	MATERIAL	63 RA SURFACE FINISH ALL FEATURES MUST MEET SPECIFICATION AFTER PLATING BEFORE POWDER-COAT IF PLATED OR POWDER-COATED SEE FINISH		SIZE <b>B</b>	DWG. NO. 00260-81
DO NOT SCALE DRAWING		SCALE: 1:2		REV <b>A</b>	SHEET 3 OF 6

A

A



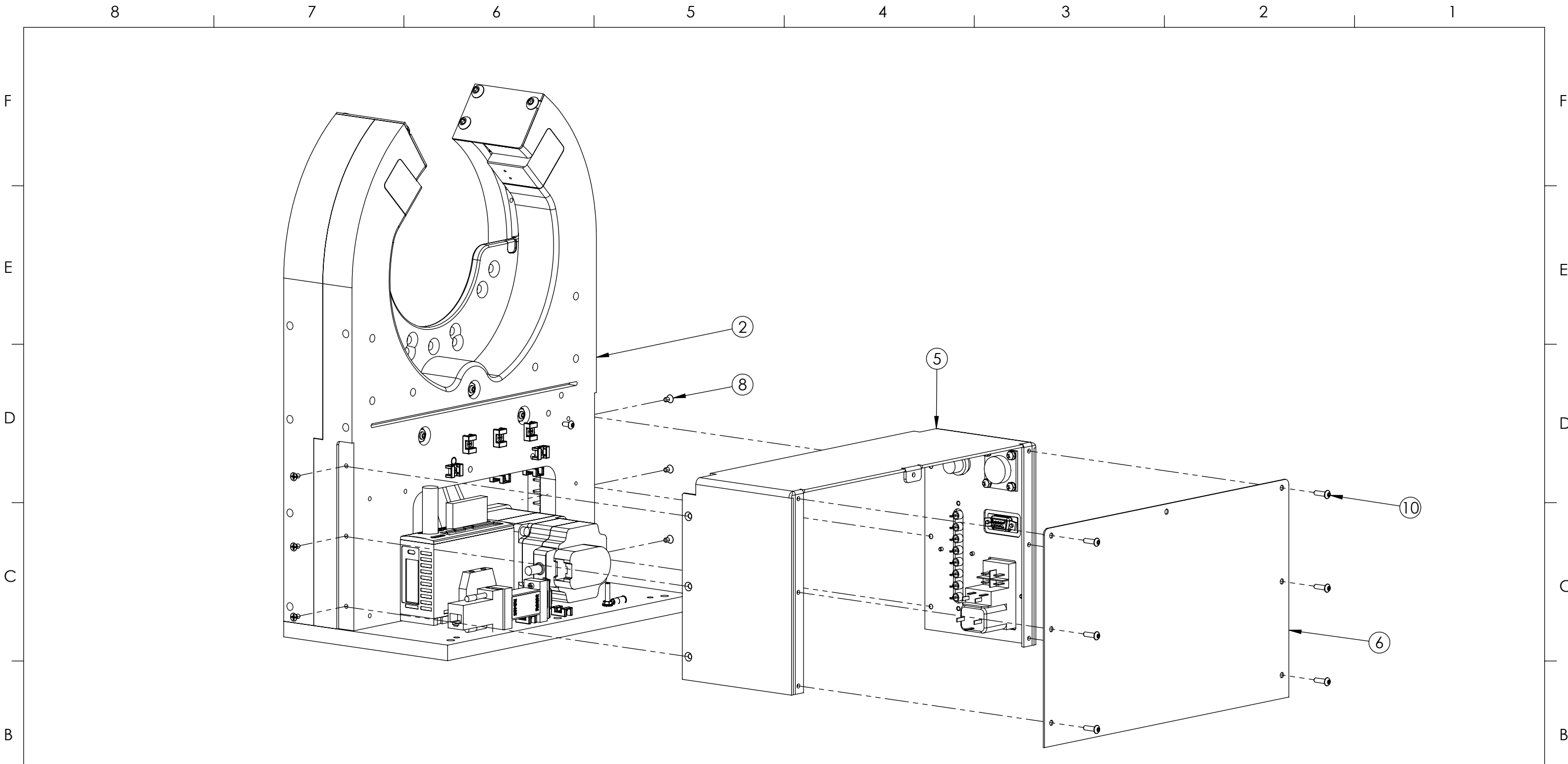
**NOTES:**

- BEFORE YOU CAN INSTALL OR REMOVE ③ YOU MUST COMPLETELY COMPRESS THE SPRINGS ON ②. YOU WILL NEED A 1/8" SOCKET OR WRENCH.
- YOU MUST ROTATE ③ INTO ROLLERS ON ②.

**ASSEMBLY NOTES:**


- USE A DROP OF LOCTITE 242 ON THE FOLLOWING HARDWARE: ⑦
1. SLIDE ITEM ③ ONTO ITEM ②. NEXT MOUNT THE DRIVE BELT.
  2. SLIDE ITEM ④ ONTO ITEM ③. THEN SECURE ITEM ④ TO ITEM ② WITH THE SCREWS PROVIDED IN ITEM ④.
  3. THREAD ITEM ⑦ INTO ITEM ②. TIGHTEN WITH A5/32" HEX KEY TOOL.

<b>GENERAL FINISH NOTE</b> DE-BURR AND BREAK ALL SHARP EDGES BEFORE FINISH AND/OR SHIPPING  PROPRIETARY AND CONFIDENTIAL  THE INFORMATION CONTAINED IN THIS DRAWING IS THE SOLE PROPERTY OF LASERLINC, INC. ANY REPRODUCTION IN PART OR AS A WHOLE WITHOUT THE WRITTEN PERMISSION OF LASERLINC, INC. IS PROHIBITED.	UNLESS OTHERWISE SPECIFIED: DIMENSIONS ARE IN INCHES TOLERANCES: ANGLES ±.25 TWO PLACE DECIMAL ±0.010 THREE PLACE DECIMAL ±0.005 FOUR PLACE DECIMAL ±0.0005 UNMARKED FILLETS/CHAMFER .06 DE-BURR ALL PARTS	NAME DATE DRAWN BY: MAM 1/13/2014	 LASERLINC, INC. PHONE: 888-707-4892 INFO@LASERLINC.COM WWW.LASERLINC.COM
	INTERPRET GEOMETRIC TOLERANCING PER: ASME Y14.5 MATERIAL FINISH DO NOT SCALE DRAWING	TITLE: 8102-0004-81 PROFILEVU-R FOR TLASER260 MICROMETER  SIZE B DWG. NO. 00260-81 REV A SCALE: 1:3 SHEET 4 OF 6	

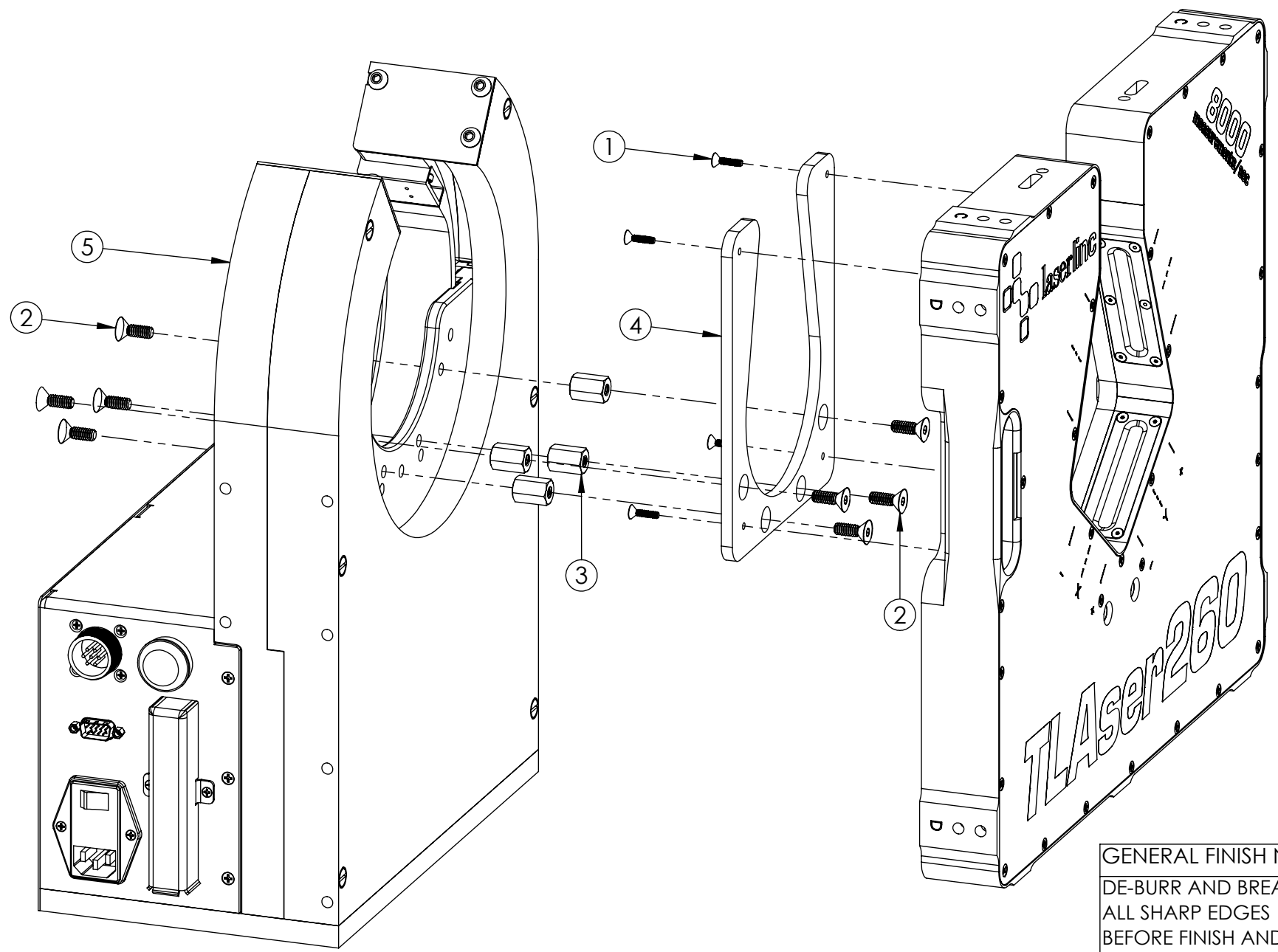


**ASSEMBLY NOTES:**

- USE A DROP OF LOCTITE 222 ON THE FOLLOWING HARDWARE: (8) & (10)
1. MOUNT ITEM (5) TO ITEM (2) WITH ITEM (8). TIGHTEN WITH A #2 PHILLIPS SCREW DRIVER.
  2. MOUNT ITEM (6) TO ITEM (5) WITH ITEM (10). TIGHTEN WITH A 5/64" HEX KEY TOOL.


<b>GENERAL FINISH NOTE</b> DE-BURR AND BREAK ALL SHARP EDGES BEFORE FINISH AND/OR SHIPPING	UNLESS OTHERWISE SPECIFIED: DIMENSIONS ARE IN INCHES TOLERANCES: ANGLES ±.25° TWO PLACE DECIMAL ±0.010 THREE PLACE DECIMAL ±0.005 FOUR PLACE DECIMAL ±0.0005 UNMARKED FILLETS/CHAMFER .06 DE-BURR ALL PARTS	NAME MAM	DATE 1/13/2014	 <b>LASERLINC, INC.</b> PHONE: 888-707-4892 INFO@LASERLINC.COM WWW.LASERLINC.COM	
	PROPRIETARY AND CONFIDENTIAL THE INFORMATION CONTAINED IN THIS DRAWING IS THE SOLE PROPERTY OF LASERLINC, INC. ANY REPRODUCTION IN PART OR AS A WHOLE WITHOUT THE WRITTEN PERMISSION OF LASERLINC, INC. IS PROHIBITED.	INTERPRET GEOMETRIC TOLERANCING PER: ASME Y14.5 MATERIAL FINISH DO NOT SCALE DRAWING	DRAWN BY:		TITLE: 8102-0004-81 PROFILEVU-R FOR TLASER260 MICROMETER
		63 RA SURFACE FINISH ALL FEATURES MUST MEET SPECIFICATION AFTER PLATING BEFORE POWDER-COAT IF PLATED OR POWDER-COATED SEE FINISH	SIZE <b>B</b>	DWG. NO. 00260-81	REV <b>A</b>
		SCALE: 1:3		SHEET 5 OF 6	

ITEM NO.	PART NUMBER	DESCRIPTION	Part Location	QTY.
1	0261-2200-04 6-32 x 5-8L FSHCS SS	McMaster-Carr Part # 92210A150	17-Q	4
2	0001-2245-04 1-4 - 20 x 3-4L FH SHCS SS	McMaster-Carr # 92210A540	19-E	8
3	8102-2218-04 1-4 - 20 x 3-4L x 1-2Hex Standoff SS THRU ALL	McMaster-Carr Part # 91115A406		4
4	8102-3211-05 TLAsEr260 ProfileVu Mount	REV B		1
5	00122-81 ProfileVu-R for TLAsEr122 Micrometer	REV B	-	1



**ASSEMBLY NOTES:**

- USE A DROP OF LOCTITE 222 ON THE FOLLOWING HARDWARE: ① & ②
1. MOUNT ITEM ③ TO ITEM ⑤ WITH ITEM ②. TIGHTEN WITH 5/32"
  2. MOUNT ITEM ④ TO ITEM ③ WITH ITEM ②. TIGHTEN WITH 5/32"
  3. MOUNT MICROMETER TO ITEM ④ WITH ITEM ①. TIGHTEN WITH A 5/64" HEX KEY TOOL.

<b>GENERAL FINISH NOTE</b> DE-BURR AND BREAK ALL SHARP EDGES BEFORE FINISH AND/OR SHIPPING  PROPRIETARY AND CONFIDENTIAL  THE INFORMATION CONTAINED IN THIS DRAWING IS THE SOLE PROPERTY OF LASERLINC, INC. ANY REPRODUCTION IN PART OR AS A WHOLE WITHOUT THE WRITTEN PERMISSION OF LASERLINC, INC. IS PROHIBITED.	UNLESS OTHERWISE SPECIFIED: DIMENSIONS ARE IN INCHES TOLERANCES: ANGLES ±.25° TWO PLACE DECIMAL ±0.010 THREE PLACE DECIMAL ±0.005 FOUR PLACE DECIMAL ±0.0005 UNMARKED FILLETS/CHAMFER .06 DE-BURR ALL PARTS	NAME MAM DATE 1/13/2014	 <b>LASERLINC, INC.</b> PHONE: 888-707-4892 INFO@LASERLINC.COM WWW.LASERLINC.COM	
	INTERPRET GEOMETRIC TOLERANCING PER: ASME Y14.5	DRAWN BY:		TITLE: 8102-0004-81 PROFILEVU-R FOR TLASER260 MICROMETER
MATERIAL FINISH DO NOT SCALE DRAWING	63 RA SURFACE FINISH ALL FEATURES MUST MEET SPECIFICATION AFTER PLATING BEFORE POWDER-COAT IF PLATED OR POWDER-COATED SEE FINISH	SIZE <b>B</b>	DWG. NO. 00260-81	REV <b>A</b>
		SCALE: 1:3	SHEET 6 OF 6	