

8

7

6

5

4

3

2

1

REVISIONS				
ZONE	REV.	DESCRIPTION	DATE	APPROVED
	A	CHECK-IN	1/13/2014	MAM

F

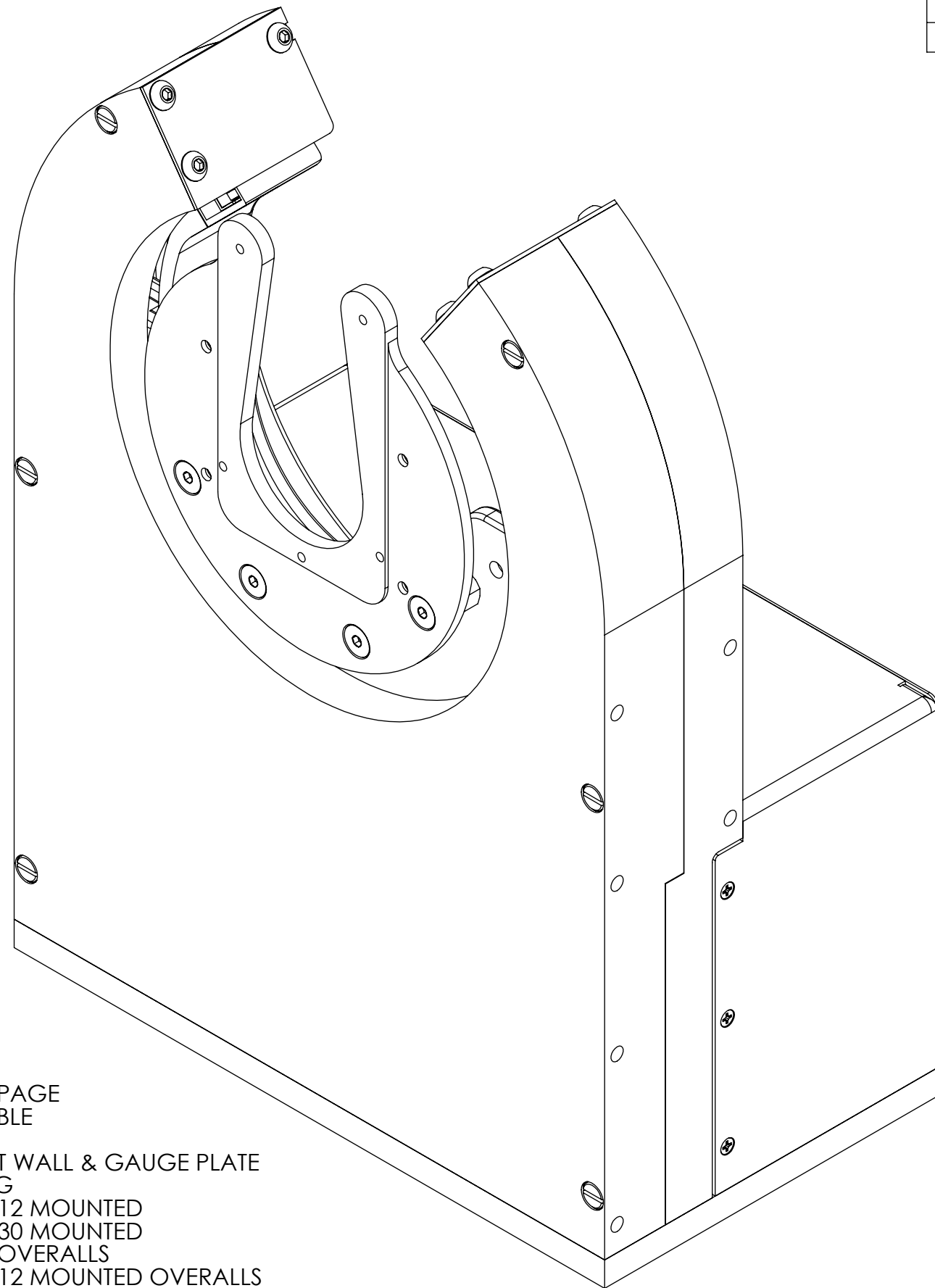
E

D

C

B


A



METRON-R, TRITON330/312 AUTOMATED ROTATION SYSTEM

INDEX

- (1) COVER PAGE
- (2) BOM TABLE
- (3) BASE
- (4) SUPPORT WALL & GAUGE PLATE
- (5) HOUSING
- (6) TRITON312 MOUNTED
- (7) TRITON330 MOUNTED
- (8) FIXTURE OVERALLS
- (9) TRITON312 MOUNTED OVERALLS
- (10) TRITON330 MOUNTED OVERALLS

GENERAL FINISH NOTE		UNLESS OTHERWISE SPECIFIED:		NAME	DATE	 LASERLINC, INC. PHONE: 888-707-4892 INFO@LASERLINC.COM WWW.LASERLINC.COM
DE-BURR AND BREAK ALL SHARP EDGES BEFORE FINISH AND/OR SHIPPING		DIMENSIONS ARE IN INCHES TOLERANCES: ANGLES ±.25° TWO PLACE DECIMAL ±0.010 THREE PLACE DECIMAL ±0.005 FOUR PLACE DECIMAL ±0.0005 UNMARKED FILLETS/CHAMFER .06 DE-BURR ALL PARTS		DRAWN BY:	EMM	
PROPRIETARY AND CONFIDENTIAL		INTERPRET GEOMETRIC TOLERANCING PER: ASME Y14.5				TITLE:
THE INFORMATION CONTAINED IN THIS DRAWING IS THE SOLE PROPERTY OF LASERLINC, INC. ANY REPRODUCTION IN PART OR AS A WHOLE WITHOUT THE WRITTEN PERMISSION OF LASERLINC, INC. IS PROHIBITED.		MATERIAL				METRON-R, TRION330-312 AUTOMATED ROTATION SYSTEM
		FINISH				SIZE
		DO NOT SCALE DRAWING				DWG. NO.
						8102-0001-81
						REV
						A
				SCALE: 1:2		SHEET 1 OF 10

8

7

6

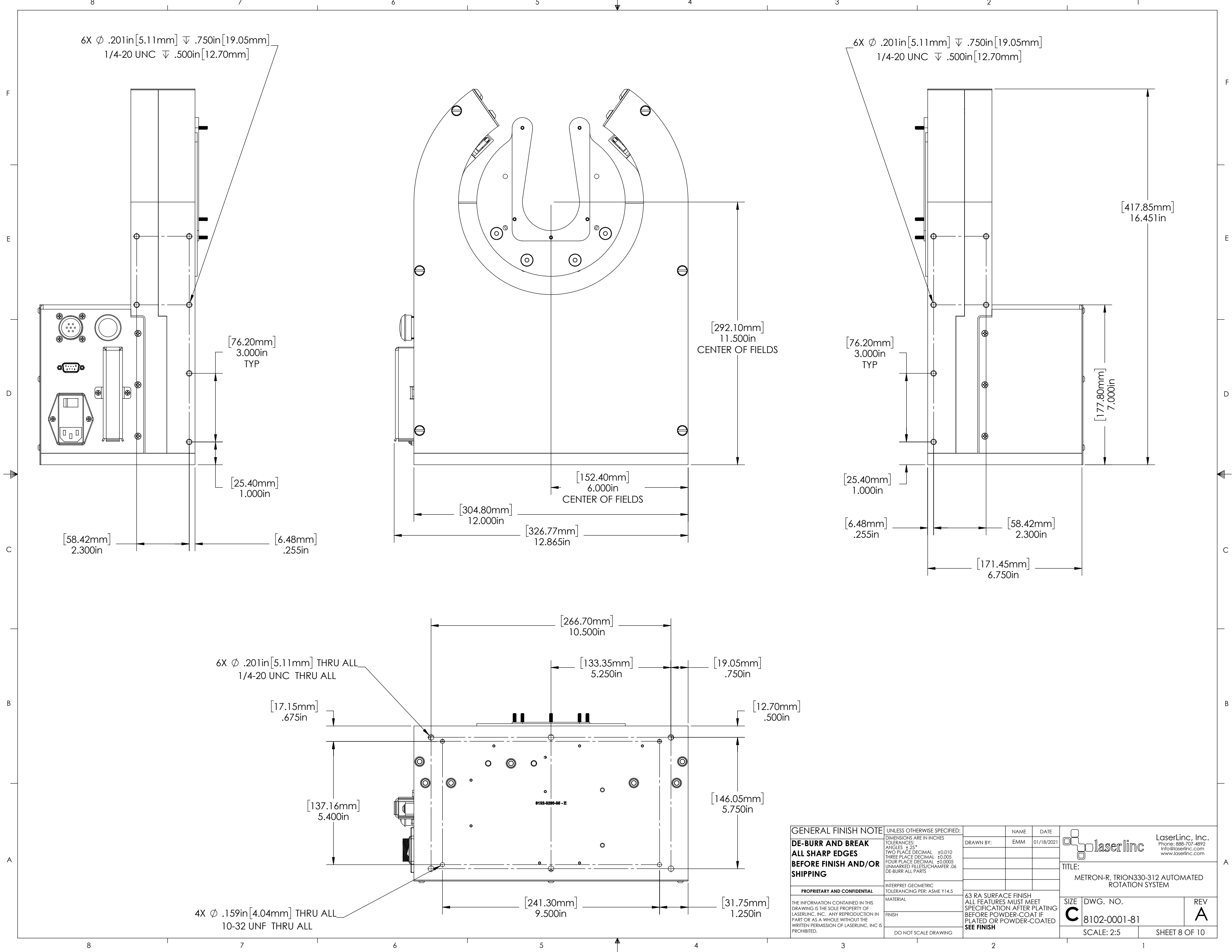
5

4

3

2

1

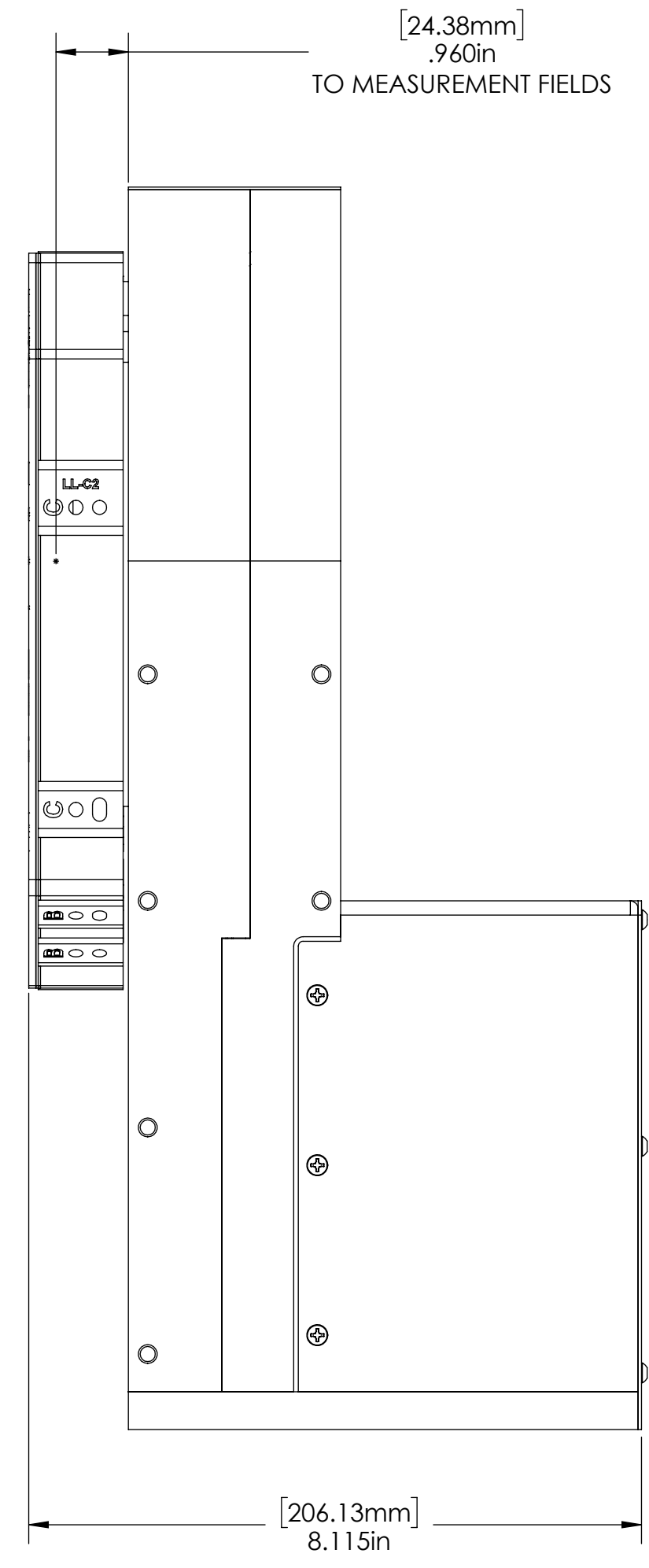
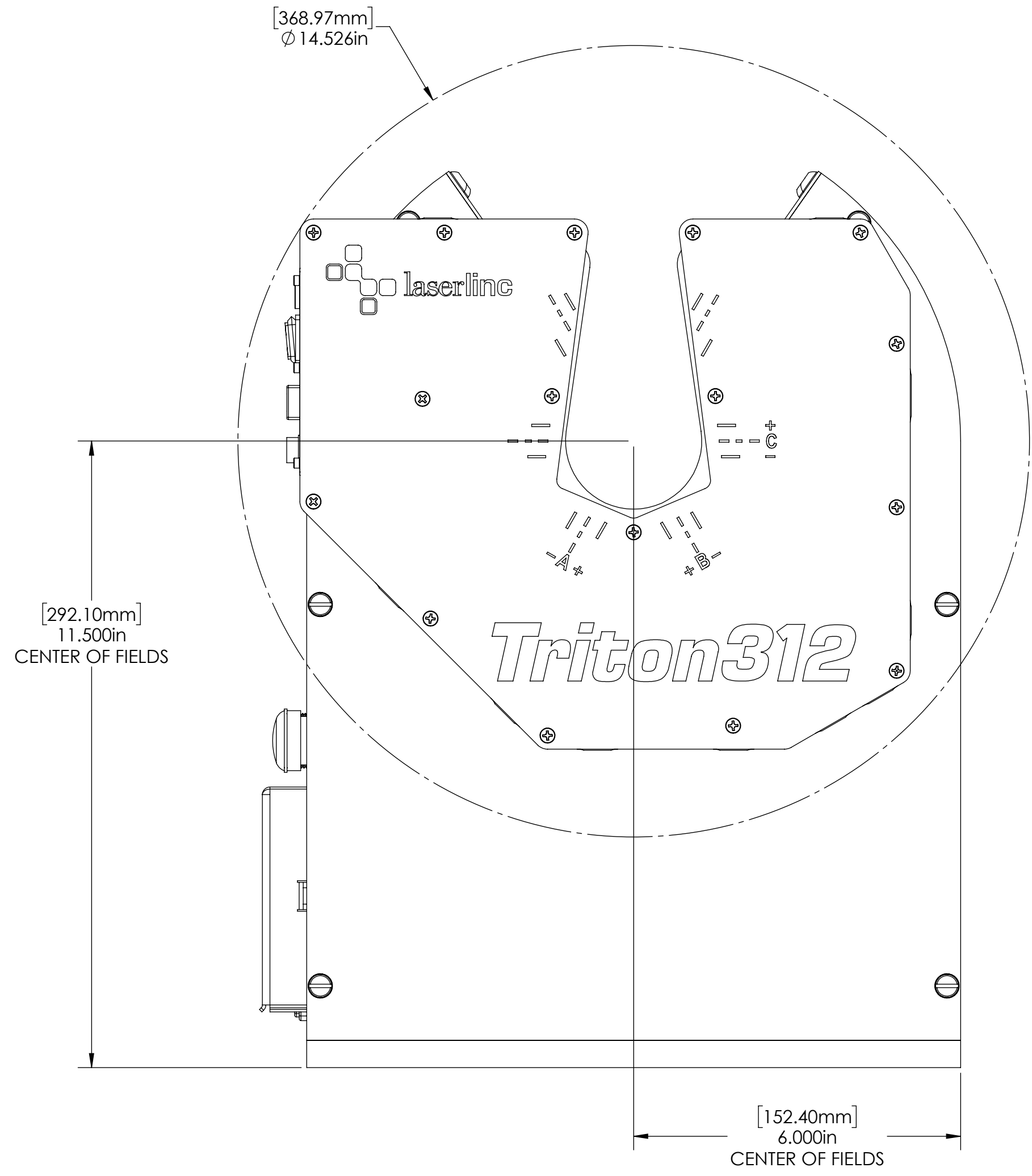


GENERAL FINISH NOTE		UNLESS OTHERWISE SPECIFIED:		NAME	DATE
DE-BURR AND BREAK		DIMENSIONS ARE IN INCHES		DRAWN BY:	EMM
ALL SHARP EDGES		TOLERANCES:			01/18/2021
BEFORE FINISH AND/OR		ANGLES ±25°			
SHIPPING		TWO PLACE DECIMAL ±0.010			
		THREE PLACE DECIMAL ±0.005			
		FOUR PLACE DECIMAL ±0.0005			
		UNMARKED FILLETS/CHAMFER .06			
		DE-BURR ALL PARTS			
PROPRIETARY AND CONFIDENTIAL		INTERPRET GEOMETRIC TOLERANCING PER: ASME Y14.5			
THE INFORMATION CONTAINED IN THIS DRAWING IS THE SOLE PROPERTY OF LASERLINC, INC. ANY REPRODUCTION IN PART OR AS A WHOLE WITHOUT THE WRITTEN PERMISSION OF LASERLINC, INC IS PROHIBITED.		MATERIAL		63 RA SURFACE FINISH ALL FEATURES MUST MEET SPECIFICATION AFTER PLATING BEFORE POWDER-COAT IF PLATED OR POWDER-COATED	
		FINISH		SEE FINISH	
		DO NOT SCALE DRAWING			
				TITLE: METRON-R, TRION330-312 AUTOMATED ROTATION SYSTEM	
		SIZE		DWG. NO.	
		C		8102-0001-81	
		SCALE: 2:5		SHEET 8 OF 10	
				REV A	



8 7 6 5 4 3 2 1

F
E
D
C
B
A



GENERAL FINISH NOTE		UNLESS OTHERWISE SPECIFIED:		NAME	DATE
DE-BURR AND BREAK ALL SHARP EDGES BEFORE FINISH AND/OR SHIPPING		DIMENSIONS ARE IN INCHES		DRAWN BY:	EMM
PROPRIETARY AND CONFIDENTIAL		TOLERANCES:			01/18/2021
THE INFORMATION CONTAINED IN THIS DRAWING IS THE SOLE PROPERTY OF LASERLINC, INC. ANY REPRODUCTION IN PART OR AS A WHOLE WITHOUT THE WRITTEN PERMISSION OF LASERLINC, INC IS PROHIBITED.		ANGLES: $\pm 25^\circ$			
		TWO PLACE DECIMAL ± 0.010			
		THREE PLACE DECIMAL ± 0.005			
		FOUR PLACE DECIMAL ± 0.0005			
		UNMARKED FILLETS/CHAMFER: .06			
		DE-BURR ALL PARTS			
		INTERPRET GEOMETRIC TOLERANCING PER: ASME Y14.5			
		MATERIAL		63 RA SURFACE FINISH ALL FEATURES MUST MEET SPECIFICATION AFTER PLATING BEFORE POWDER-COAT IF PLATED OR POWDER-COATED SEE FINISH	
		FINISH			
		DO NOT SCALE DRAWING			
				TITLE: METRON-R, TRION330-312 AUTOMATED ROTATION SYSTEM	
				SIZE	DWG. NO.
				C	8102-0001-81
				REV	A
				SCALE: 1:2 SHEET 9 OF 10	

8 7 6 5 4 3 2 1