

REVISIONS				
ZONE	REV.	DESCRIPTION	DATE	APPROVED
	A	CHECK-IN	05/17/18	MAM


# 0312-0002-00 TRITON312 TRIPLE-AXIS NETLINC MICROMETER OVERALL MOUNTING DIMENSIONS

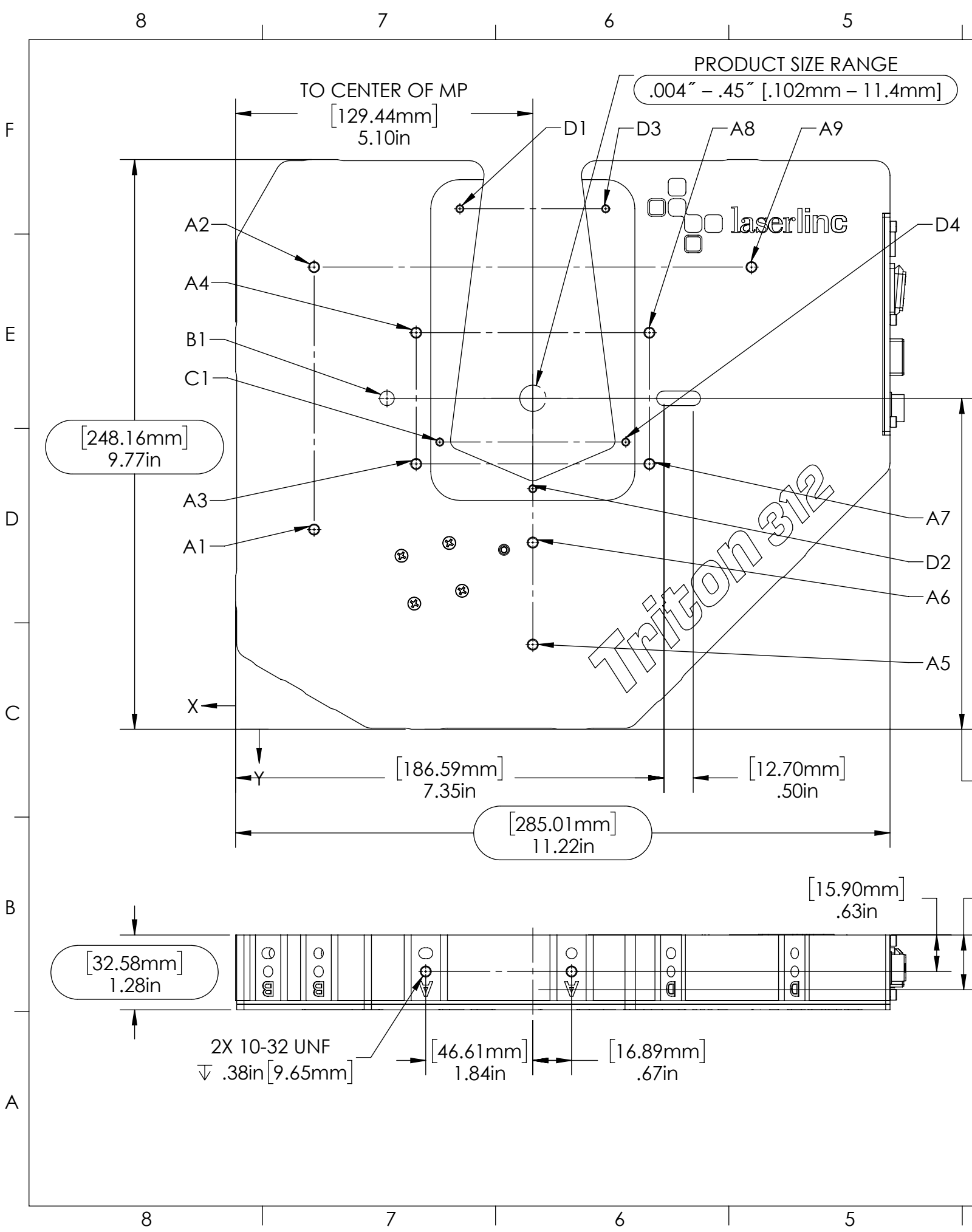
**NOTES:**

- APPROX. WEIGHT: 8.5LBS [3.9KG]
- POWER REQUIREMENTS: 12VDC 125MA, +5VDC 75MA, -5VDC 50MA
- MEASUREMENTS PER SECOND (Hz): 1800 [600 PER AXIS]
- RESOLUTION: .000001" [.025µm]
- REPEATABILITY<sup>2</sup> UN-AVERAGED: ±.0001" [±2.5µm]
- REPEATABILITY<sup>2</sup> TWO SECOND: ±.000005" [±.125µm]

**INDEX**

- (1) COVER PAGE
- (2) BACK & A-MOUNTING DIMENSIONS
- (3) B-MOUNTING DIMENSIONS
- (4) C-MOUNTING DIMENSIONS
- (5) D-MOUNTING DIMENSIONS
- (6) E-MOUNTING DIMENSIONS

<b>GENERAL FINISH NOTE</b>		UNLESS OTHERWISE SPECIFIED:		NAME	DATE	 LASERLINC, INC. PHONE: 888-707-4892 INFO@LASERLINC.COM WWW.LASERLINC.COM
<b>DE-BURR AND BREAK ALL SHARP EDGES BEFORE FINISH AND/OR SHIPPING</b>		DIMENSIONS ARE IN INCHES TOLERANCES: ANGLES ±.25 TWO PLACE DECIMAL ±0.010 THREE PLACE DECIMAL ±0.005 FOUR PLACE DECIMAL ±0.0005 UNMARKED FILLETS/CHAMFER .06 DE-BURR ALL PARTS		DRAWN BY:	MAM	
<b>PROPRIETARY AND CONFIDENTIAL</b>		INTERPRET GEOMETRIC TOLERANCING PER: ASME Y14.5				TITLE: 0312-0002-00 TRITON312 TRIPLE-AXIS NETLINC MICROMETER OVERALL MOUNTING DIMENSIONS
THE INFORMATION CONTAINED IN THIS DRAWING IS THE SOLE PROPERTY OF LASERLINC, INC. ANY REPRODUCTION IN PART OR AS A WHOLE WITHOUT THE WRITTEN PERMISSION OF LASERLINC, INC. IS PROHIBITED.		MATERIAL		63 RA SURFACE FINISH ALL FEATURES MUST MEET SPECIFICATION AFTER PLATING BEFORE POWDER-COAT IF PLATED OR POWDER-COATED <b>SEE FINISH</b>		SIZE <b>B</b>
		FINISH				DWG. NO. 0312-0002-00
		DO NOT SCALE DRAWING				REV <b>A</b>
				SCALE: 3:4		SHEET 1 OF 6



TAG	X LOC	Y LOC	SIZE
A1	-1.346in	-3.425in	$\phi .16in \nabla .47in$ 10-32 UNF $\nabla .38in$
A2	-1.346in	-7.925in	
A3	-3.096in	-4.550in	
A4	-3.096in	-6.800in	
A5	-5.096in	-1.452in	
A6	-5.096in	-3.202in	
A7	-7.096in	-4.550in	
A8	-7.096in	-6.800in	
A9	-8.846in	-7.925in	
B1	-2.596in	-5.675in	$\phi .25in^{+.00}_{-.00} \nabla .38in$
C1	-3.502in	-4.925in	$\phi .11in \nabla .60in$ 6-32 UNC $\nabla .50in$
D1	-3.846in	-8.925in	$\phi .11in \nabla .60in$ 6-32 UNC $\nabla .50in$
D2	-5.096in	-4.125in	
D3	-6.346in	-8.925in	
D4	-6.690in	-4.925in	

TO CENTER OF MP  
 [144.15mm]  
 5.68in

MOUNTING HOLES TO MP  
 [23.83mm]  
 .94in


NOTES:  
 • MP = MEASUREMENT PLANE

**GENERAL FINISH NOTE**  
**DE-BURR AND BREAK**  
**ALL SHARP EDGES**  
**BEFORE FINISH AND/OR**  
**SHIPPING**

**PROPRIETARY AND CONFIDENTIAL**  
 THE INFORMATION CONTAINED IN THIS DRAWING IS THE SOLE PROPERTY OF LASERLINC, INC. ANY REPRODUCTION IN PART OR AS A WHOLE WITHOUT THE WRITTEN PERMISSION OF LASERLINC, INC. IS PROHIBITED.

UNLESS OTHERWISE SPECIFIED:  
 DIMENSIONS ARE IN INCHES  
 TOLERANCES:  
 ANGLES  $\pm .25$   
 TWO PLACE DECIMAL  $\pm 0.010$   
 THREE PLACE DECIMAL  $\pm 0.005$   
 FOUR PLACE DECIMAL  $\pm 0.0005$   
 UNMARKED FILLETS/CHAMFER .06  
 DE-BURR ALL PARTS  
 INTERPRET GEOMETRIC TOLERANCING PER: ASME Y14.5  
 MATERIAL  
 FINISH  
 DO NOT SCALE DRAWING

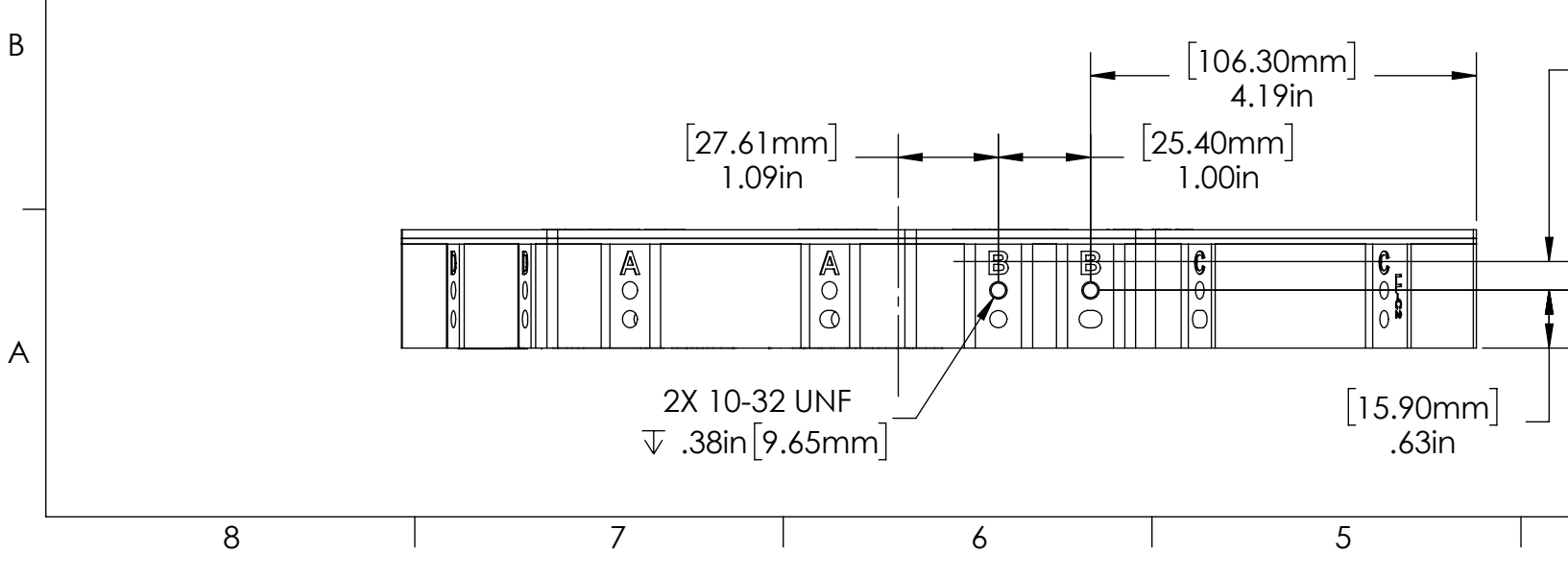
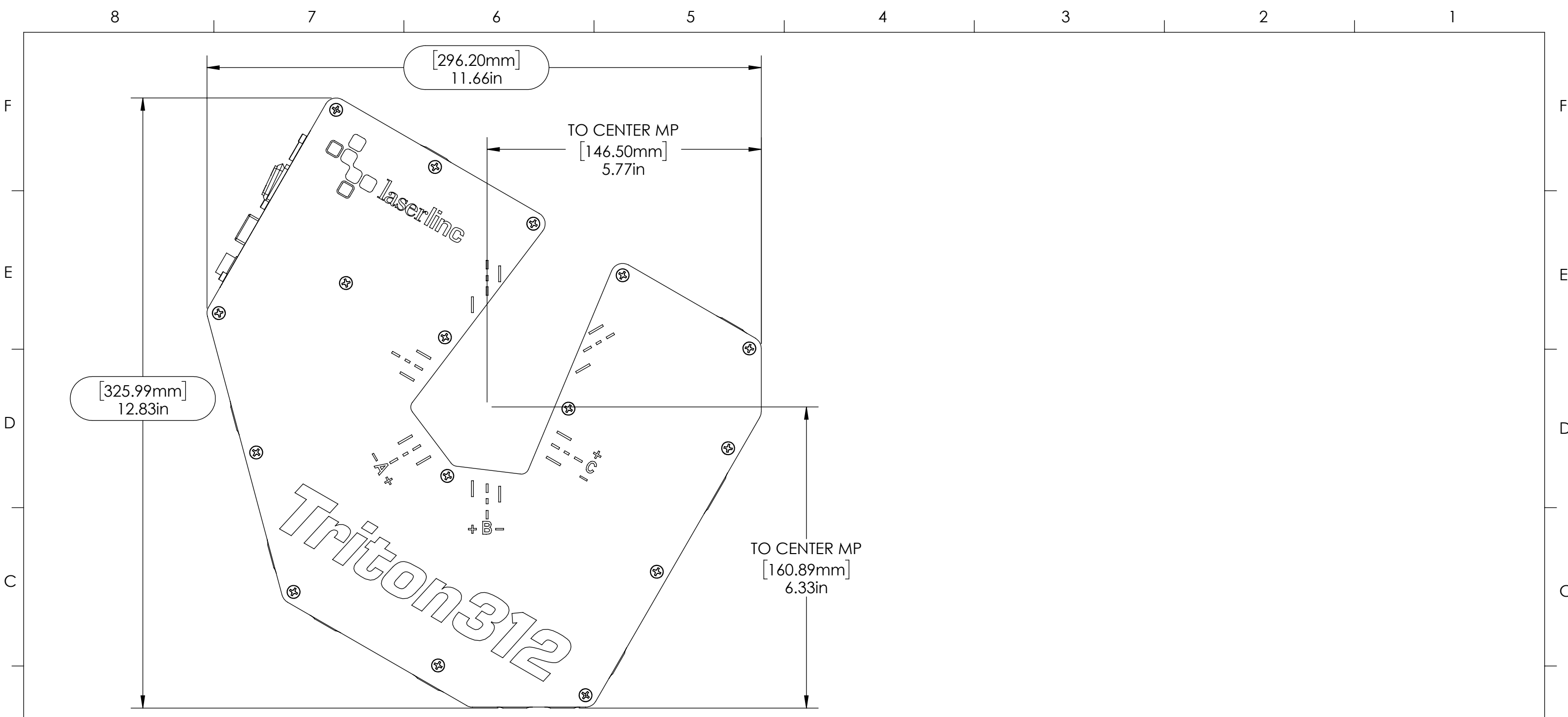
NAME	DATE
MAM	5/17/2018
DRAWN BY:	
63 RA SURFACE FINISH ALL FEATURES MUST MEET SPECIFICATION AFTER PLATING BEFORE POWDER-COAT IF PLATED OR POWDER-COATED <b>SEE FINISH</b>	


**LASERLINC, INC.**  
 PHONE: 888-707-4892  
 INFO@LASERLINC.COM  
 WWW.LASERLINC.COM

TITLE:  
 0312-0002-00 TRITON312 TRIPLE-AXIS NETLINC MICROMETER OVERALL MOUNTING DIMENSIONS

SIZE	DWG. NO.	REV
<b>B</b>	0312-0002-00	<b>A</b>

SCALE: 1:2      SHEET 2 OF 6



MOUNTING HOLES TO MP  
 [7.92mm]  
 .31in

**GENERAL FINISH NOTE**  
**DE-BURR AND BREAK**  
**ALL SHARP EDGES**  
**BEFORE FINISH AND/OR**  
**SHIPPING**

**PROPRIETARY AND CONFIDENTIAL**

THE INFORMATION CONTAINED IN THIS DRAWING IS THE SOLE PROPERTY OF LASERLINC, INC. ANY REPRODUCTION IN PART OR AS A WHOLE WITHOUT THE WRITTEN PERMISSION OF LASERLINC, INC IS PROHIBITED.

UNLESS OTHERWISE SPECIFIED:  
 DIMENSIONS ARE IN INCHES  
 TOLERANCES:  
 ANGLES ±.25°  
 TWO PLACE DECIMAL ±0.010  
 THREE PLACE DECIMAL ±0.005  
 FOUR PLACE DECIMAL ±0.0005  
 UNMARKED FILLETS/CHAMFER .06  
 DE-BURR ALL PARTS

INTERPRET GEOMETRIC TOLERANCING PER: ASME Y14.5

MATERIAL

FINISH

DO NOT SCALE DRAWING

NOTES:  
 • MP = MEASUREMENT PLANE

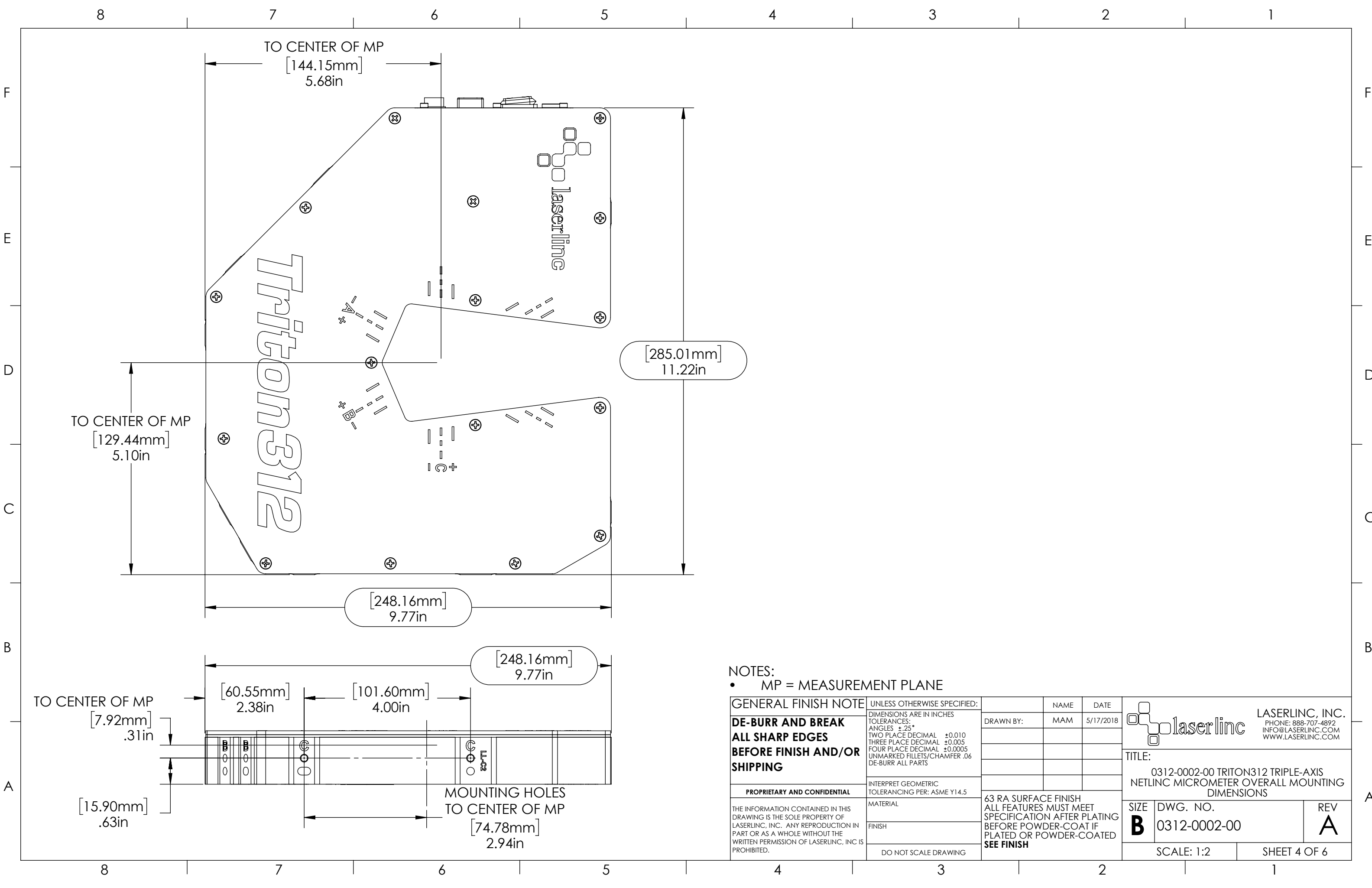
NAME	DATE
MAM	5/17/2018

LASERLINC, INC.  
 PHONE: 888-707-4892  
 INFO@LASERLINC.COM  
 WWW.LASERLINC.COM


TITLE:  
 0312-0002-00 TRITON312 TRIPLE-AXIS  
 NETLINC MICROMETER OVERALL MOUNTING  
 DIMENSIONS

SIZE	DWG. NO.	REV
<b>B</b>	0312-0002-00	<b>A</b>

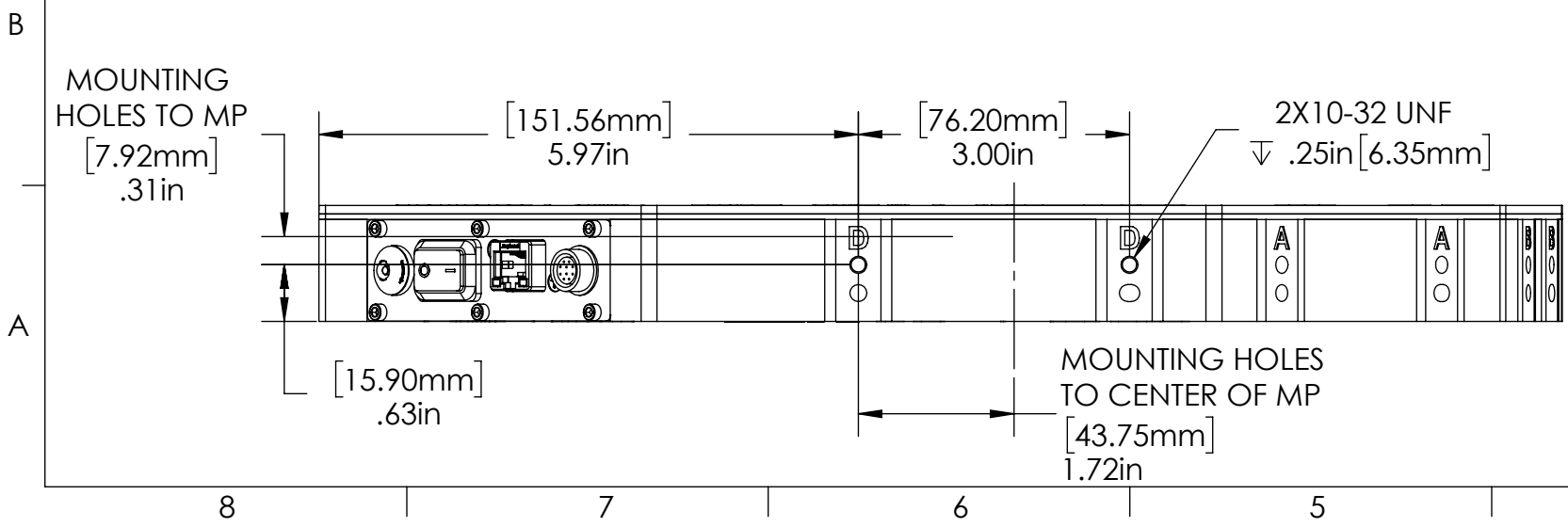
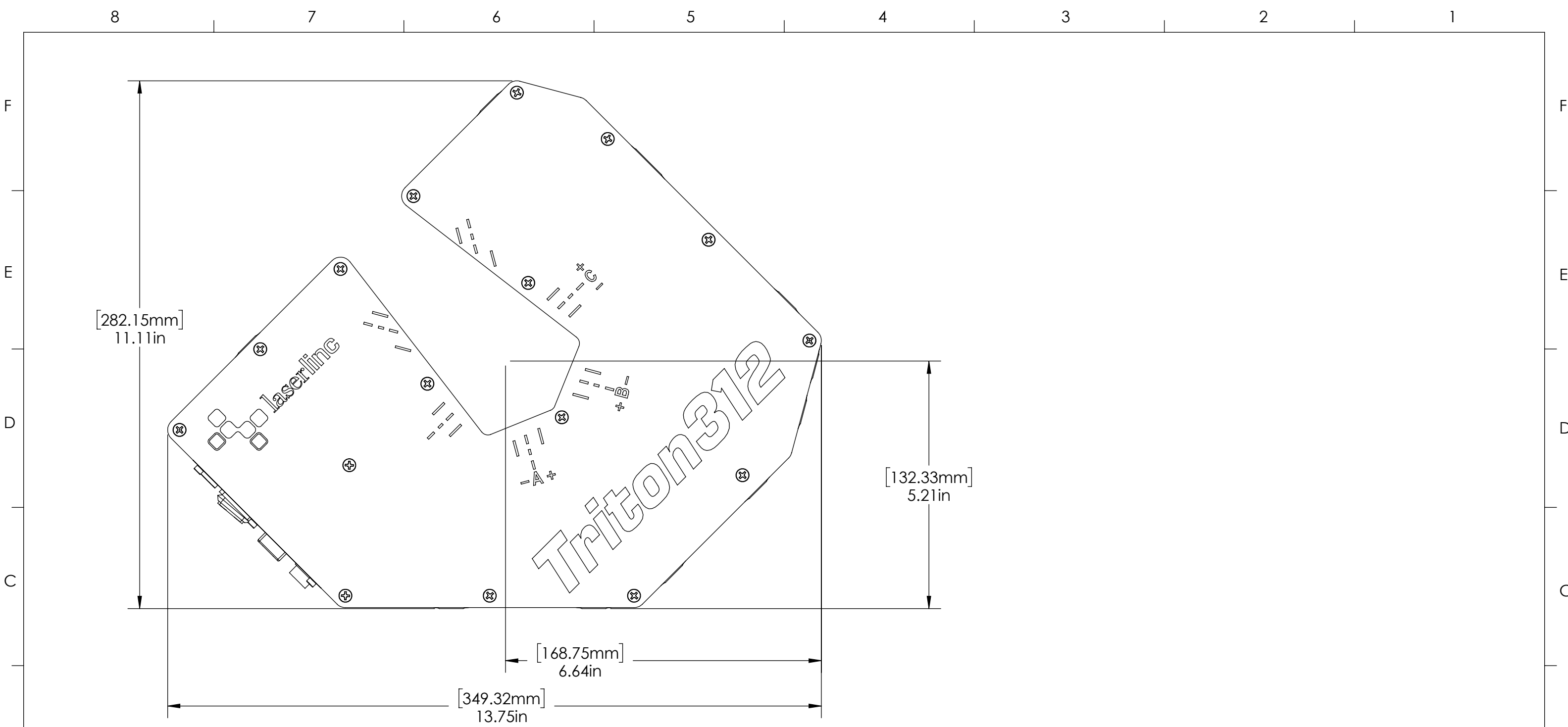
SCALE: 1:2 SHEET 3 OF 6




NOTES:  
 • MP = MEASUREMENT PLANE

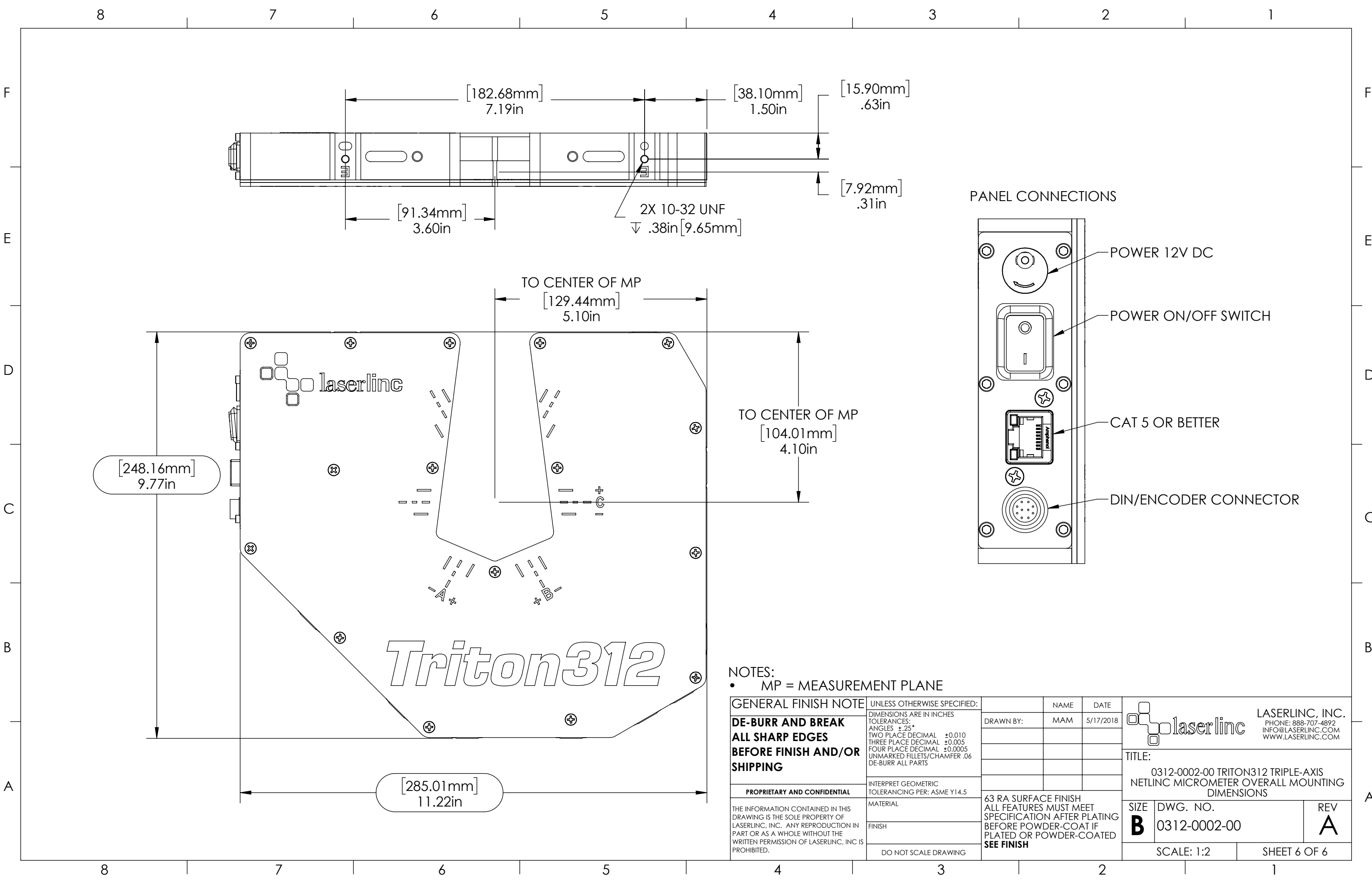
GENERAL FINISH NOTE	UNLESS OTHERWISE SPECIFIED:	NAME	DATE	 LASERLINC, INC. PHONE: 888-707-4892 INFO@LASERLINC.COM WWW.LASERLINC.COM
	<b>DE-BURR AND BREAK</b> <b>ALL SHARP EDGES</b> <b>BEFORE FINISH AND/OR SHIPPING</b>	DIMENSIONS ARE IN INCHES TOLERANCES: ANGLES ±.25° TWO PLACE DECIMAL ±0.010 THREE PLACE DECIMAL ±0.005 FOUR PLACE DECIMAL ±0.0005 UNMARKED FILLETS/CHAMFER .06 DE-BURR ALL PARTS	DRAWN BY:	
<b>PROPRIETARY AND CONFIDENTIAL</b> THE INFORMATION CONTAINED IN THIS DRAWING IS THE SOLE PROPERTY OF LASERLINC, INC. ANY REPRODUCTION IN PART OR AS A WHOLE WITHOUT THE WRITTEN PERMISSION OF LASERLINC, INC. IS PROHIBITED.	INTERPRET GEOMETRIC TOLERANCING PER: ASME Y14.5 MATERIAL FINISH DO NOT SCALE DRAWING	TITLE: 0312-0002-00 TRITON312 TRIPLE-AXIS NETLINC MICROMETER OVERALL MOUNTING DIMENSIONS		SIZE <b>B</b>
		DWG. NO. 0312-0002-00		REV <b>A</b>
		SCALE: 1:2		SHEET 4 OF 6

63 RA SURFACE FINISH  
 ALL FEATURES MUST MEET SPECIFICATION AFTER PLATING BEFORE POWDER-COAT IF PLATED OR POWDER-COATED  
**SEE FINISH**



NOTES:  
 • MP = MEASUREMENT PLANE

<b>GENERAL FINISH NOTE</b>	UNLESS OTHERWISE SPECIFIED:	NAME	DATE
	DIMENSIONS ARE IN INCHES TOLERANCES: ANGLES ±.25° TWO PLACE DECIMAL ±0.010 THREE PLACE DECIMAL ±0.005 FOUR PLACE DECIMAL ±0.0005 UNMARKED FILLETS/CHAMFER .06 DE-BURR ALL PARTS	DRAWN BY: MAM	5/17/2018
<b>DE-BURR AND BREAK ALL SHARP EDGES BEFORE FINISH AND/OR SHIPPING</b>	INTERPRET GEOMETRIC TOLERANCING PER: ASME Y14.5	 <b>LASERLINC, INC.</b> PHONE: 888-707-4892 INFO@LASERLINC.COM WWW.LASERLINC.COM	
<b>PROPRIETARY AND CONFIDENTIAL</b>	MATERIAL		
THE INFORMATION CONTAINED IN THIS DRAWING IS THE SOLE PROPERTY OF LASERLINC, INC. ANY REPRODUCTION IN PART OR AS A WHOLE WITHOUT THE WRITTEN PERMISSION OF LASERLINC, INC. IS PROHIBITED.	FINISH	TITLE: 0312-0002-00 TRITON312 TRIPLE-AXIS NETLINC MICROMETER OVERALL MOUNTING DIMENSIONS	
	DO NOT SCALE DRAWING	63 RA SURFACE FINISH ALL FEATURES MUST MEET SPECIFICATION AFTER PLATING BEFORE POWDER-COAT IF PLATED OR POWDER-COATED <b>SEE FINISH</b>	
		SIZE <b>B</b>	DWG. NO. 0312-0002-00
			REV <b>A</b>
		SCALE: 1:2	SHEET 5 OF 6



*Triton312*

NOTES:  
 • MP = MEASUREMENT PLANE

<b>GENERAL FINISH NOTE</b> <b>DE-BURR AND BREAK</b> <b>ALL SHARP EDGES</b> <b>BEFORE FINISH AND/OR SHIPPING</b>	UNLESS OTHERWISE SPECIFIED: DIMENSIONS ARE IN INCHES TOLERANCES: ANGLES $\pm$ .25 TWO PLACE DECIMAL $\pm$ 0.010 THREE PLACE DECIMAL $\pm$ 0.005 FOUR PLACE DECIMAL $\pm$ 0.0005 UNMARKED FILLETS/CHAMFER .06 DE-BURR ALL PARTS	NAME DATE	 <b>LASERLINC, INC.</b> PHONE: 888-707-4892 INFO@LASERLINC.COM WWW.LASERLINC.COM
	INTERPRET GEOMETRIC TOLERANCING PER: ASME Y14.5	DRAWN BY: MAM 5/17/2018	
<b>PROPRIETARY AND CONFIDENTIAL</b> THE INFORMATION CONTAINED IN THIS DRAWING IS THE SOLE PROPERTY OF LASERLINC, INC. ANY REPRODUCTION IN PART OR AS A WHOLE WITHOUT THE WRITTEN PERMISSION OF LASERLINC, INC. IS PROHIBITED.	MATERIAL: FINISH: DO NOT SCALE DRAWING	63 RA SURFACE FINISH ALL FEATURES MUST MEET SPECIFICATION AFTER PLATING BEFORE POWDER-COAT IF PLATED OR POWDER-COATED <b>SEE FINISH</b>	SIZE <b>B</b> DWG. NO. 0312-0002-00 REV <b>A</b>
		SCALE: 1:2	SHEET 6 OF 6