

REVISIONS				
ZONE	REV.	DESCRIPTION	DATE	APPROVED
	A	CHECK-IN	11/29/2011	MAM

0330-0000-00 TRITON330 TRIPLE-AXIS MICROMETER OVERALL MOUNT DIMENSIONS

INDEX

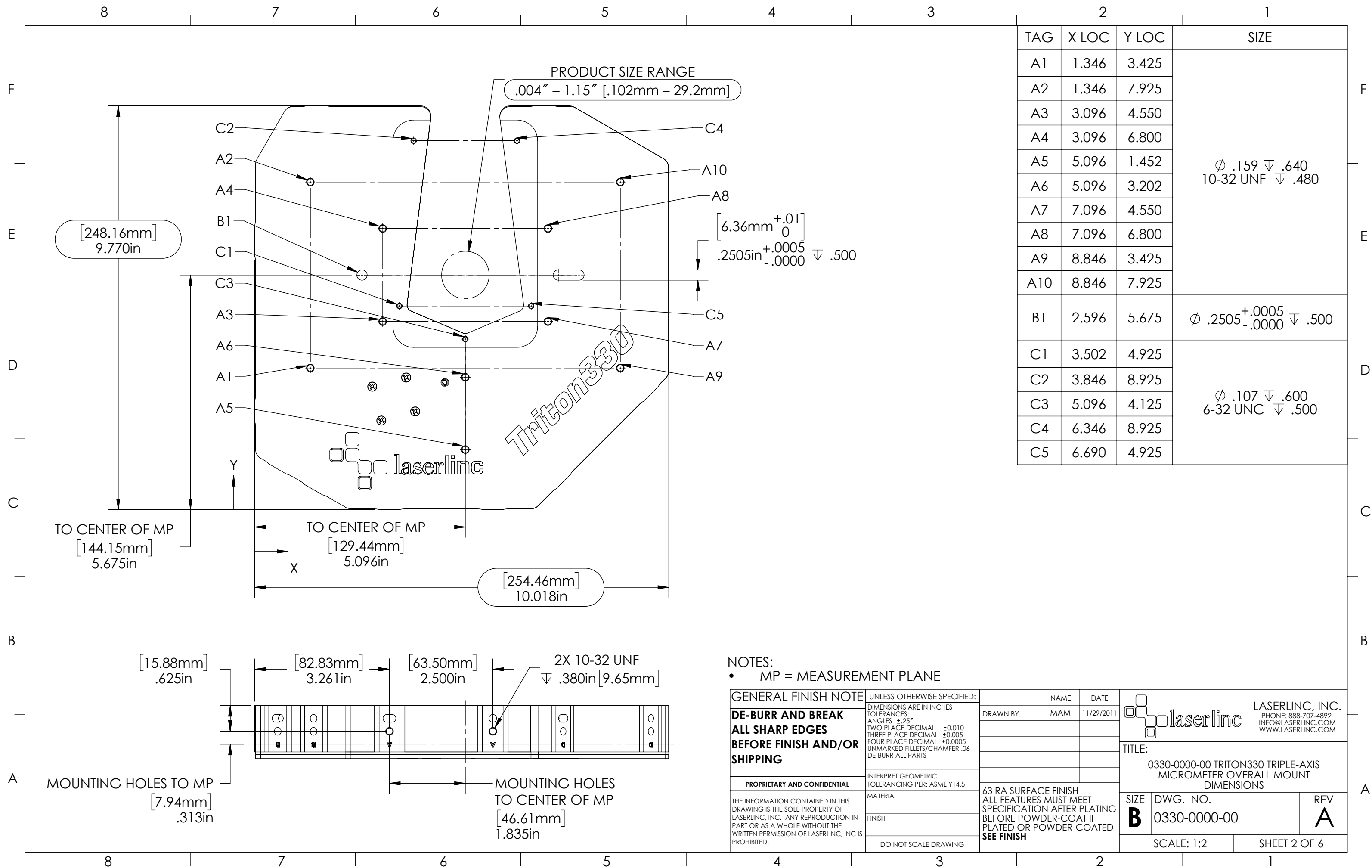
- (1) COVER PAGE
- (2) BACK & A-MOUNTING DIMENSIONS
- (3) B-MOUNTING DIMENSIONS
- (4) C-MOUNTING DIMENSIONS
- (5) D-MOUNTING DIMENSIONS
- (6) E-MOUNTING DIMENSIONS

NOTES:

- APPROX. WEIGHT: 8.5LBS [3.9KG]
- POWER REQUIREMENTS: 12VDC 125MA, +5VDC 75MA, -5VDC 50MA
- MEASUREMENTS PER SECOND (Hz): 900 [300 PER AXIS]
- RESOLUTION: .000001" [.025µm]
- REPEATABILITY² UNAVERAGED: ±.0001" [±2.5µm]
- REPEATABILITY² TWO SECOND: ±.000005" [±.125µm]

GENERAL FINISH NOTE		UNLESS OTHERWISE SPECIFIED:		NAME	DATE
DE-BURR AND BREAK ALL SHARP EDGES BEFORE FINISH AND/OR SHIPPING		DIMENSIONS ARE IN INCHES TOLERANCES: ANGLES ±.25° TWO PLACE DECIMAL ±0.010 THREE PLACE DECIMAL ±0.005 FOUR PLACE DECIMAL ±0.0005 UNMARKED FILLETS/CHAMFER .06 DE-BURR ALL PARTS		DRAWN BY:	MAM 11/29/2011
PROPRIETARY AND CONFIDENTIAL		INTERPRET GEOMETRIC TOLERANCING PER: ASME Y14.5			
THE INFORMATION CONTAINED IN THIS DRAWING IS THE SOLE PROPERTY OF LASERLINC, INC. ANY REPRODUCTION IN PART OR AS A WHOLE WITHOUT THE WRITTEN PERMISSION OF LASERLINC, INC. IS PROHIBITED.		MATERIAL		63 RA SURFACE FINISH ALL FEATURES MUST MEET SPECIFICATION AFTER PLATING BEFORE POWDER-COAT IF PLATED OR POWDER-COATED SEE FINISH	
		FINISH		TITLE: 0330-0000-00 TRITON330 TRIPLE-AXIS MICROMETER OVERALL MOUNT DIMENSIONS	
		DO NOT SCALE DRAWING		SIZE B	DWG. NO. 0330-0000-00
				REV A	
				SCALE: 1:2	SHEET 1 OF 6

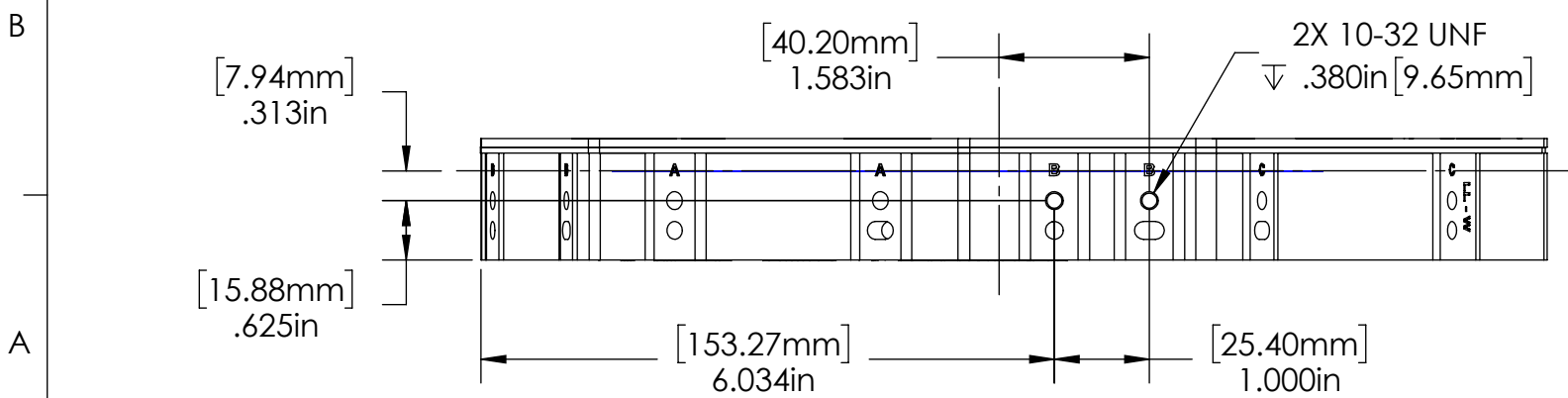
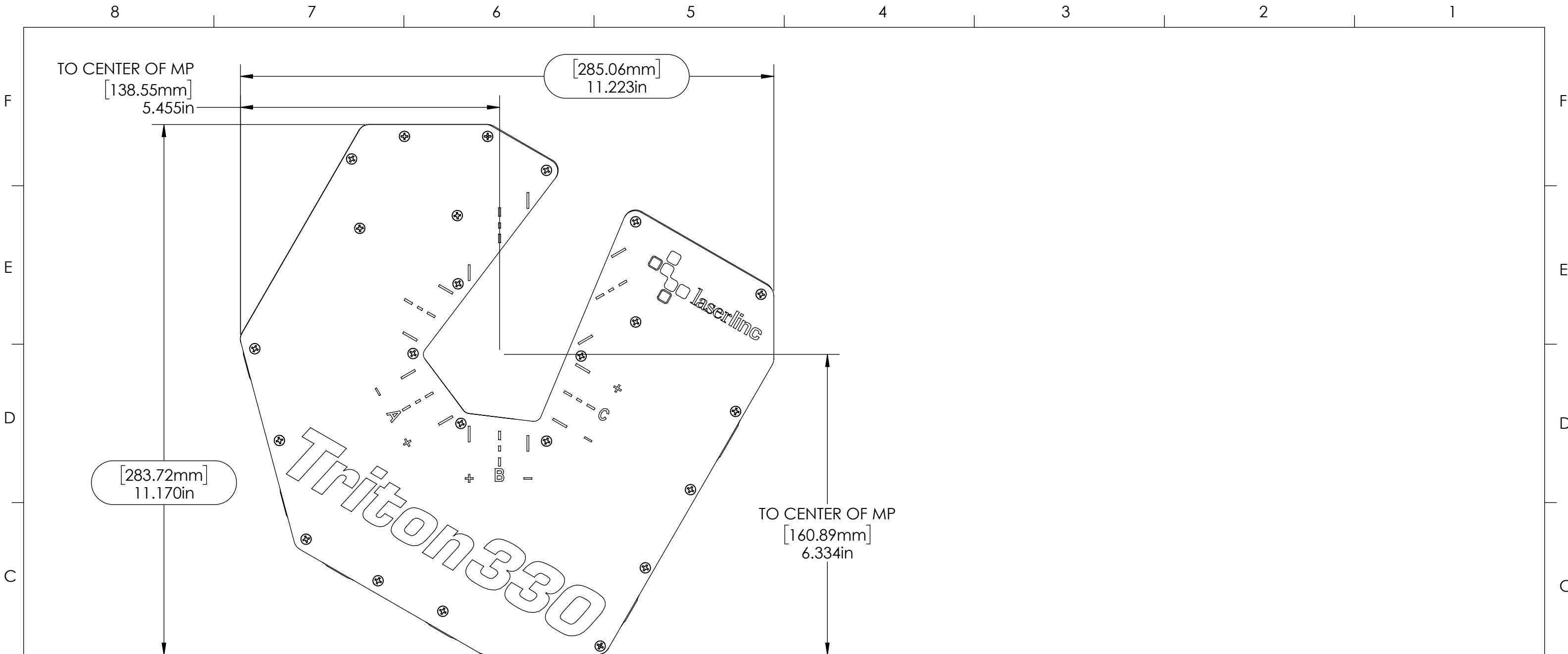




TAG	X LOC	Y LOC	SIZE
A1	1.346	3.425	$\phi .159 \downarrow .640$ 10-32 UNF $\downarrow .480$
A2	1.346	7.925	
A3	3.096	4.550	
A4	3.096	6.800	
A5	5.096	1.452	
A6	5.096	3.202	
A7	7.096	4.550	
A8	7.096	6.800	
A9	8.846	3.425	
A10	8.846	7.925	
B1	2.596	5.675	$\phi .2505^{+.0005}_{-.0000} \downarrow .500$
C1	3.502	4.925	$\phi .107 \downarrow .600$ 6-32 UNC $\downarrow .500$
C2	3.846	8.925	
C3	5.096	4.125	
C4	6.346	8.925	
C5	6.690	4.925	

NOTES:
 • MP = MEASUREMENT PLANE

GENERAL FINISH NOTE DE-BURR AND BREAK ALL SHARP EDGES BEFORE FINISH AND/OR SHIPPING	UNLESS OTHERWISE SPECIFIED:	NAME	DATE
	DIMENSIONS ARE IN INCHES TOLERANCES: ANGLES $\pm .25$ TWO PLACE DECIMAL ± 0.010 THREE PLACE DECIMAL ± 0.005 FOUR PLACE DECIMAL ± 0.0005 UNMARKED FILLETS/CHAMFER .06 DE-BURR ALL PARTS	DRAWN BY:	MAM 11/29/2011
PROPRIETARY AND CONFIDENTIAL	INTERPRET GEOMETRIC TOLERANCING PER: ASME Y14.5	LASERLINC, INC. PHONE: 888-707-4892 INFO@LASERLINC.COM WWW.LASERLINC.COM	
THE INFORMATION CONTAINED IN THIS DRAWING IS THE SOLE PROPERTY OF LASERLINC, INC. ANY REPRODUCTION IN PART OR AS A WHOLE WITHOUT THE WRITTEN PERMISSION OF LASERLINC, INC. IS PROHIBITED.	MATERIAL		
	FINISH	63 RA SURFACE FINISH ALL FEATURES MUST MEET SPECIFICATION AFTER PLATING BEFORE POWDER-COAT IF PLATED OR POWDER-COATED SEE FINISH	
	DO NOT SCALE DRAWING	SIZE B	DWG. NO. 0330-0000-00 REV A
		SCALE: 1:2	SHEET 2 OF 6




NOTES:
 • MP = MEASUREMENT PLANE

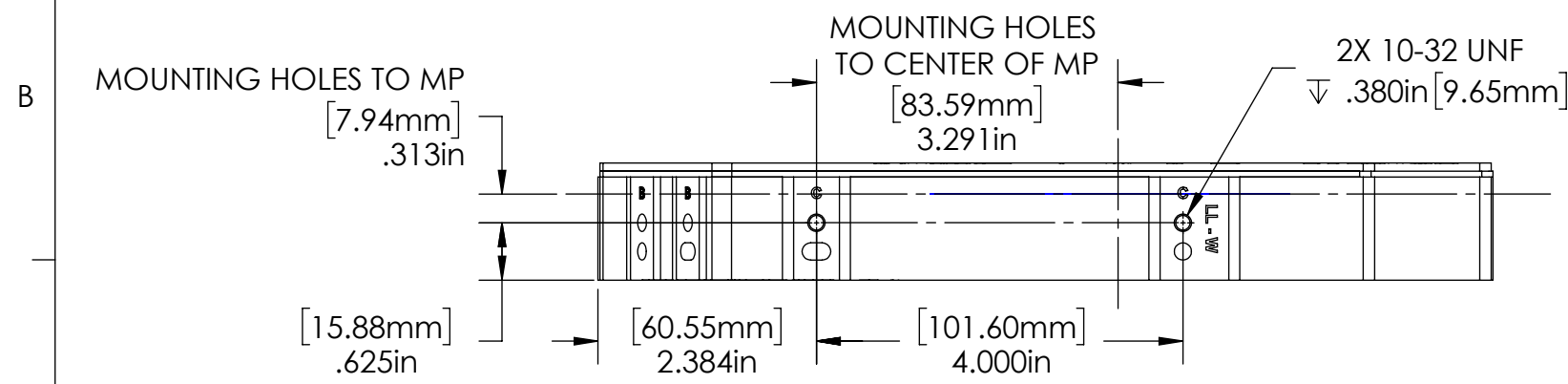
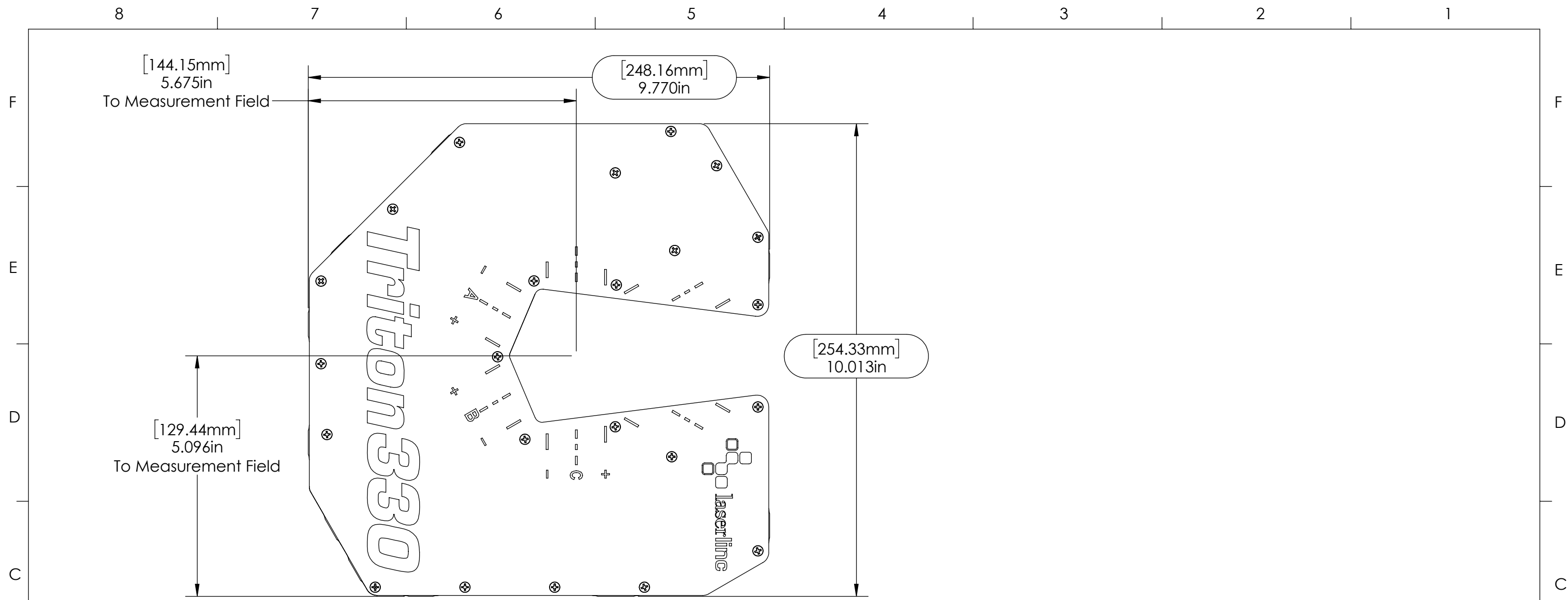
GENERAL FINISH NOTE
DE-BURR AND BREAK
ALL SHARP EDGES
BEFORE FINISH AND/OR
SHIPPING

PROPRIETARY AND CONFIDENTIAL
 THE INFORMATION CONTAINED IN THIS DRAWING IS THE SOLE PROPERTY OF LASERLINC, INC. ANY REPRODUCTION IN PART OR AS A WHOLE WITHOUT THE WRITTEN PERMISSION OF LASERLINC, INC. IS PROHIBITED.


UNLESS OTHERWISE SPECIFIED:
 DIMENSIONS ARE IN INCHES
 TOLERANCES:
 ANGLES ±.25°
 TWO PLACE DECIMAL ±0.010
 THREE PLACE DECIMAL ±0.005
 FOUR PLACE DECIMAL ±0.0005
 UNMARKED FILLETS/CHAMFER .06
 DE-BURR ALL PARTS
 INTERPRET GEOMETRIC TOLERANCING PER: ASME Y14.5
 MATERIAL
 FINISH
 DO NOT SCALE DRAWING

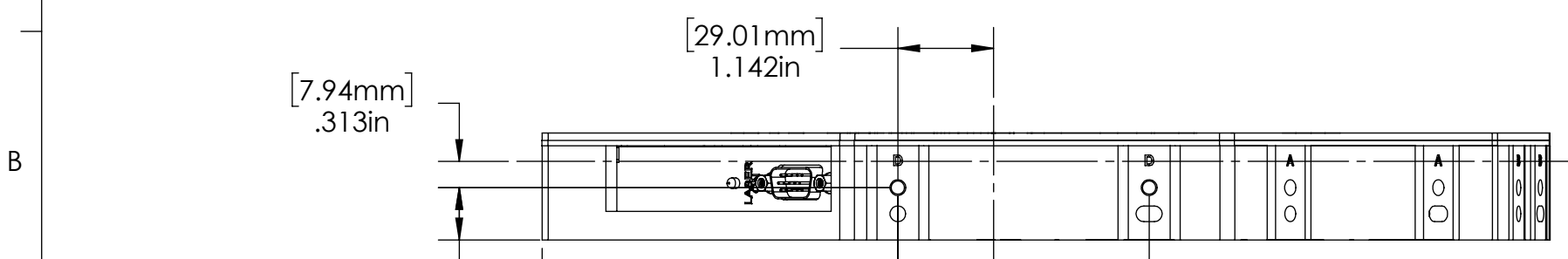
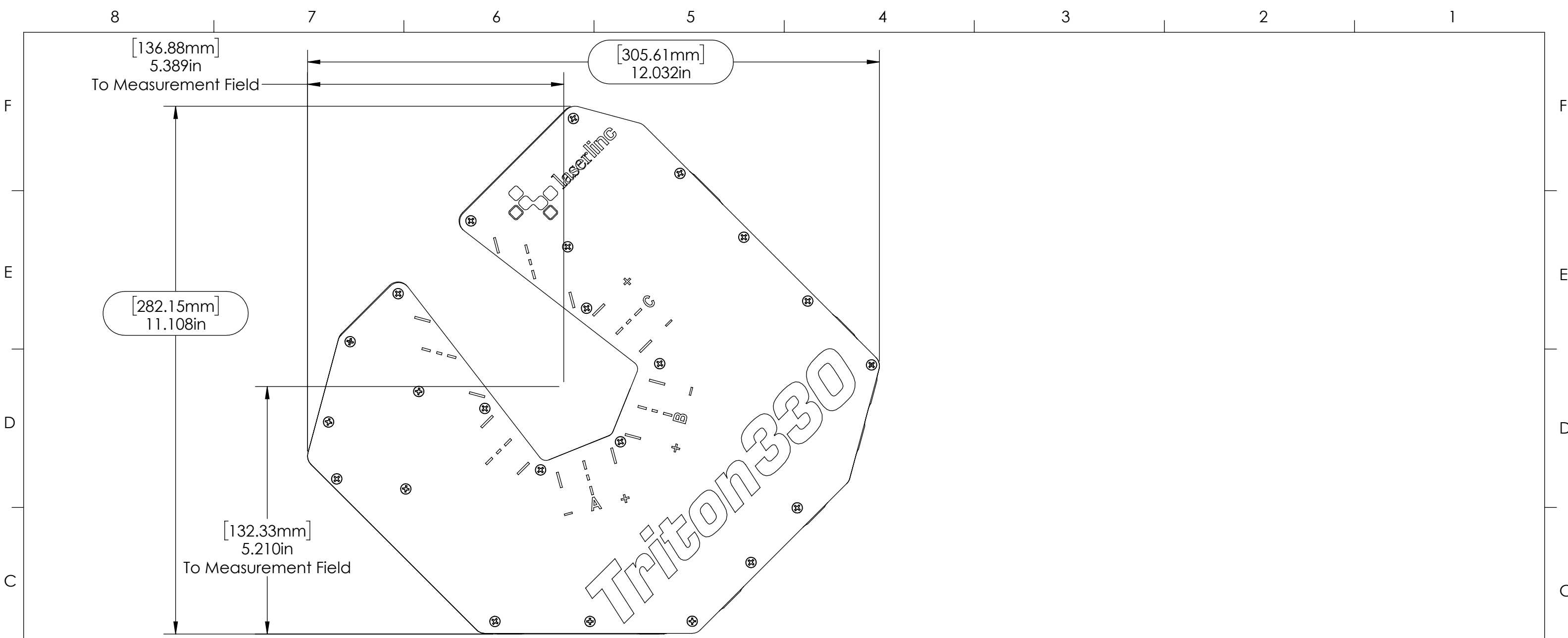
NAME	DATE
MAM	11/29/2011
DRAWN BY:	
63 RA SURFACE FINISH ALL FEATURES MUST MEET SPECIFICATION AFTER PLATING BEFORE POWDER-COAT IF PLATED OR POWDER-COATED SEE FINISH	

		LASERLINC, INC. PHONE: 888-707-4892 INFO@LASERLINC.COM WWW.LASERLINC.COM	
TITLE: 0330-0000-00 TRITON330 TRIPLE-AXIS MICROMETER OVERALL MOUNT DIMENSIONS			
SIZE	DWG. NO.	REV	
B	0330-0000-00	A	
SCALE: 1:2		SHEET 3 OF 6	




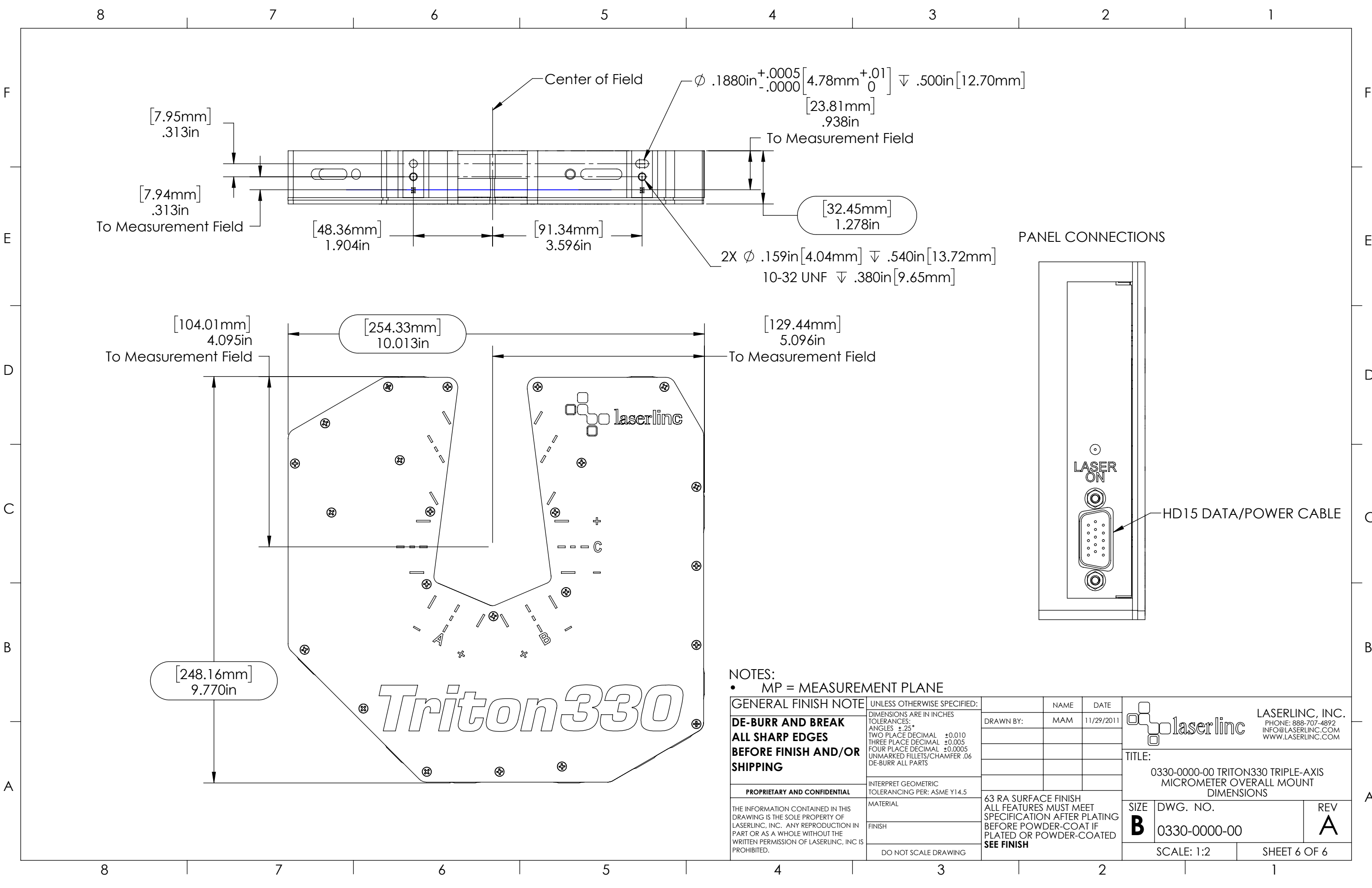
NOTES:
 • MP = MEASUREMENT PLANE

GENERAL FINISH NOTE DE-BURR AND BREAK ALL SHARP EDGES BEFORE FINISH AND/OR SHIPPING	UNLESS OTHERWISE SPECIFIED: DIMENSIONS ARE IN INCHES TOLERANCES: ANGLES ±.25° TWO PLACE DECIMAL ±0.010 THREE PLACE DECIMAL ±0.005 FOUR PLACE DECIMAL ±0.0005 UNMARKED FILLETS/CHAMFER .06 DE-BURR ALL PARTS	NAME MAM	DATE 11/29/2011	 LASERLINC, INC. PHONE: 888-707-4892 INFO@LASERLINC.COM WWW.LASERLINC.COM
	INTERPRET GEOMETRIC TOLERANCING PER: ASME Y14.5	DRAWN BY:	TITLE: 0330-0000-00 TRITON330 TRIPLE-AXIS MICROMETER OVERALL MOUNT DIMENSIONS	
PROPRIETARY AND CONFIDENTIAL THE INFORMATION CONTAINED IN THIS DRAWING IS THE SOLE PROPERTY OF LASERLINC, INC. ANY REPRODUCTION IN PART OR AS A WHOLE WITHOUT THE WRITTEN PERMISSION OF LASERLINC, INC. IS PROHIBITED.	MATERIAL FINISH DO NOT SCALE DRAWING	63 RA SURFACE FINISH ALL FEATURES MUST MEET SPECIFICATION AFTER PLATING BEFORE POWDER-COAT IF PLATED OR POWDER-COATED SEE FINISH		SIZE B
		DWG. NO. 0330-0000-00	REV A	SCALE: 1:2 SHEET 4 OF 6



NOTES:
 • MP = MEASUREMENT PLANE

GENERAL FINISH NOTE DE-BURR AND BREAK ALL SHARP EDGES BEFORE FINISH AND/OR SHIPPING	UNLESS OTHERWISE SPECIFIED: DIMENSIONS ARE IN INCHES TOLERANCES: ANGLES ±.25° TWO PLACE DECIMAL ±0.010 THREE PLACE DECIMAL ±0.005 FOUR PLACE DECIMAL ±0.0005 UNMARKED FILLETS/CHAMFER .06 DE-BURR ALL PARTS	NAME MAM	DATE 11/29/2011	 LASERLINC, INC. PHONE: 888-707-4892 INFO@LASERLINC.COM WWW.LASERLINC.COM
	PROPRIETARY AND CONFIDENTIAL THE INFORMATION CONTAINED IN THIS DRAWING IS THE SOLE PROPERTY OF LASERLINC, INC. ANY REPRODUCTION IN PART OR AS A WHOLE WITHOUT THE WRITTEN PERMISSION OF LASERLINC, INC. IS PROHIBITED.	INTERPRET GEOMETRIC TOLERANCING PER: ASME Y14.5 MATERIAL FINISH DO NOT SCALE DRAWING	DRAWN BY: MAM	
	63 RA SURFACE FINISH ALL FEATURES MUST MEET SPECIFICATION AFTER PLATING BEFORE POWDER-COAT IF PLATED OR POWDER-COATED SEE FINISH	SIZE B	DWG. NO. 0330-0000-00	REV A
		SCALE: 1:2		SHEET 5 OF 6



8 7 6 5 4 3 2 1

F
E
D
C
B
A

F
E
D
C
B
A

Center of Field

$\phi .1880in^{+.0005}_{-.0000}$ $[4.78mm^{+.01}_0]$ $\nabla .500in [12.70mm]$

$[23.81mm]$
.938in

To Measurement Field

$[7.95mm]$
.313in

$[7.94mm]$
.313in

To Measurement Field

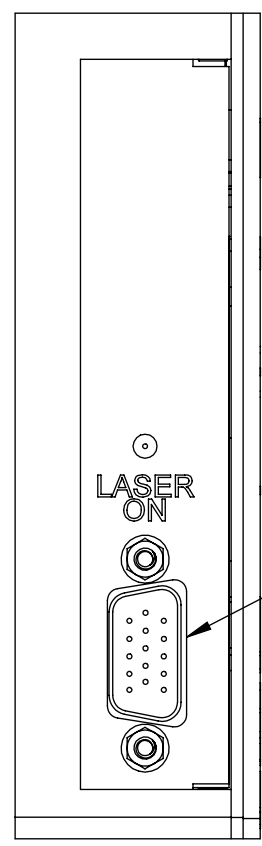
$[48.36mm]$
1.904in

$[91.34mm]$
3.596in

$[32.45mm]$
1.278in

2X $\phi .159in [4.04mm]$ $\nabla .540in [13.72mm]$
10-32 UNF $\nabla .380in [9.65mm]$

PANEL CONNECTIONS



HD15 DATA/POWER CABLE

$[104.01mm]$
4.095in

To Measurement Field

$[254.33mm]$
10.013in

$[129.44mm]$
5.096in

To Measurement Field

laserline

Triton 330

$[248.16mm]$
9.770in

NOTES:
• MP = MEASUREMENT PLANE

GENERAL FINISH NOTE DE-BURR AND BREAK ALL SHARP EDGES BEFORE FINISH AND/OR SHIPPING	UNLESS OTHERWISE SPECIFIED: DIMENSIONS ARE IN INCHES TOLERANCES: ANGLES $\pm .25^\circ$ TWO PLACE DECIMAL ± 0.010 THREE PLACE DECIMAL ± 0.005 FOUR PLACE DECIMAL ± 0.0005 UNMARKED FILLETS/CHAMFER .06 DE-BURR ALL PARTS	NAME	DATE	 LASERLINC, INC. PHONE: 888-707-4892 INFO@LASERLINC.COM WWW.LASERLINC.COM
	INTERPRET GEOMETRIC TOLERANCING PER: ASME Y14.5	DRAWN BY:	MAM	
PROPRIETARY AND CONFIDENTIAL	MATERIAL	63 RA SURFACE FINISH ALL FEATURES MUST MEET SPECIFICATION AFTER PLATING BEFORE POWDER-COAT IF PLATED OR POWDER-COATED SEE FINISH		TITLE: 0330-0000-00 TRITON330 TRIPLE-AXIS MICROMETER OVERALL MOUNT DIMENSIONS
THE INFORMATION CONTAINED IN THIS DRAWING IS THE SOLE PROPERTY OF LASERLINC, INC. ANY REPRODUCTION IN PART OR AS A WHOLE WITHOUT THE WRITTEN PERMISSION OF LASERLINC, INC. IS PROHIBITED.	FINISH	SIZE B	DWG. NO. 0330-0000-00	REV A
DO NOT SCALE DRAWING		SCALE: 1:2	SHEET 6 OF 6	

8 7 6 5 4 3 2 1