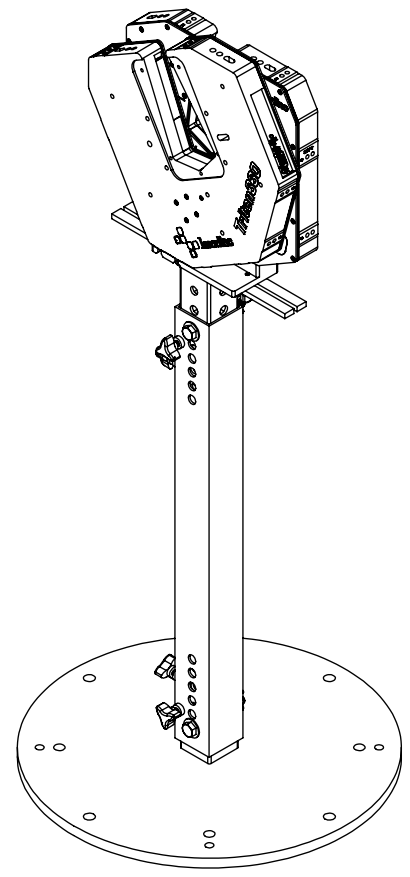


8 7 6 5 4 3 2 1


| REVISIONS | | | | |
|-----------|------|-------------|-----------|----------|
| ZONE | REV. | DESCRIPTION | DATE | APPROVED |
| | A | Check-In | 1/17/2013 | MAM |



Stand for Dual TLaser330 Overall Dimensions

INDEX

- (1) Cover Page
- (2) Fixture Dimensions
- (3) Mounted Dimensions

| | | | | |
|--|--|--|------|--|
| UNLESS OTHERWISE SPECIFIED: | | NAME | DATE |  LaserLinc, Inc. Phone: 888-707-4892 Info@laserlinc.com www.laserlinc.com |
| DIMENSIONS ARE IN INCHES TOLERANCES: ANGULAR: MACH ± BEND ± TWO PLACE DECIMAL ±0.010 THREE PLACE DECIMAL ±0.005 FOUR PLACE DECIMAL ±0.0005 ANGLES ±.25° UNMARKED FILLETS/ROUNDS R.0625 DE-BURR ALL PARTS | | DRAWN BY: | MAM | |
| INTERPRET GEOMETRIC TOLERANCING PER: | | 63 RA SURFACE FINISH ALL FEATURES MUST MEET SPECIFICATION AFTER PLATING BEFORE POWDER-COAT IF PLATED OR POWDER-COATED SEE FINISH MACHINE ALL SURFACES | | |
| PROPRIETARY AND CONFIDENTIAL THE INFORMATION CONTAINED IN THIS DRAWING IS THE SOLE PROPERTY OF LASERLINC, INC. ANY REPRODUCTION IN PART OR AS A WHOLE WITHOUT THE WRITTEN PERMISSION OF LASERLINC, INC IS PROHIBITED. | | MATERIAL | | |
| DO NOT SCALE DRAWING | | FINISH | | |
| | | TITLE: 00330-28 Stand for Dual Triton330 Overall Dimensions | | SIZE B |
| | | DWG. NO. 00330-28 | | REV A |
| | | SCALE: 1:8 | | SHEET 1 OF 3 |

8 7 6 5 4 3 2 1

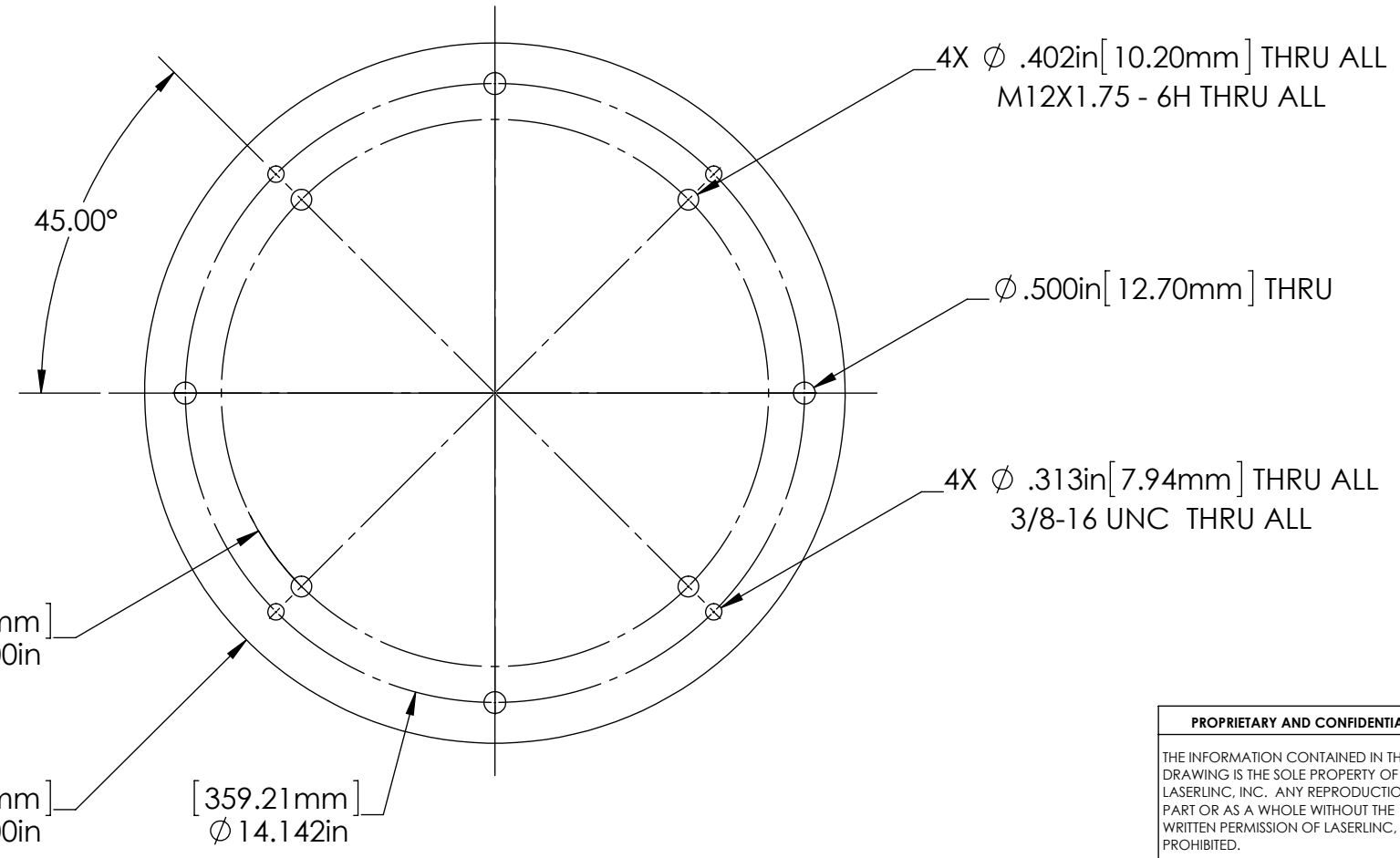
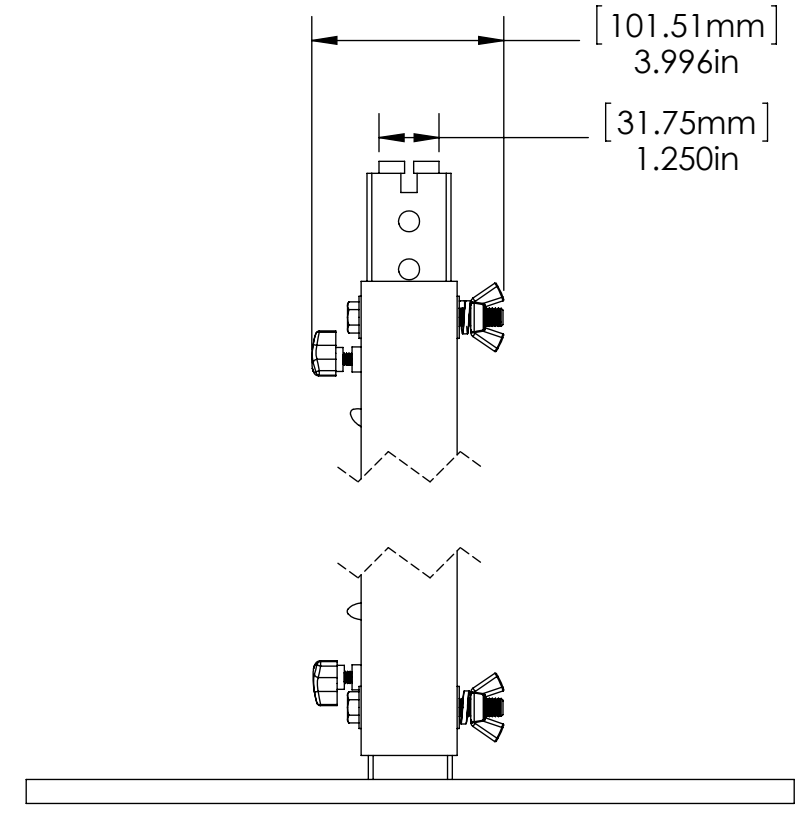
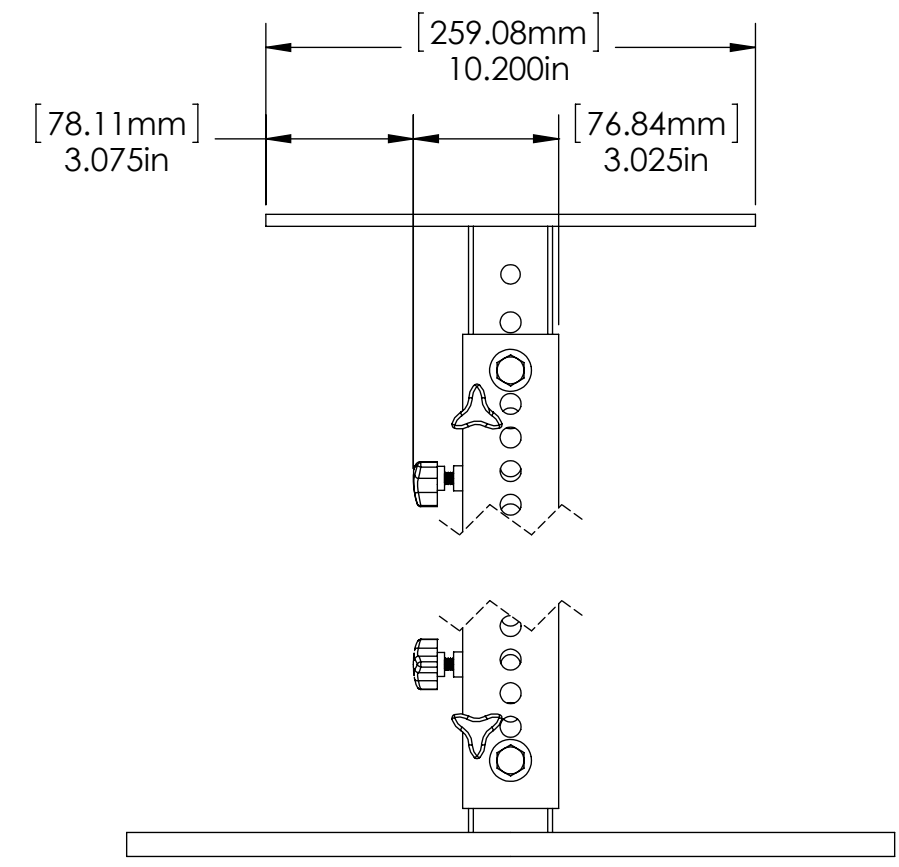
D
C
B
A

D
C
B
A

8 7 6 5 4 3 2 1

D
C
B
A

D
C
B
A



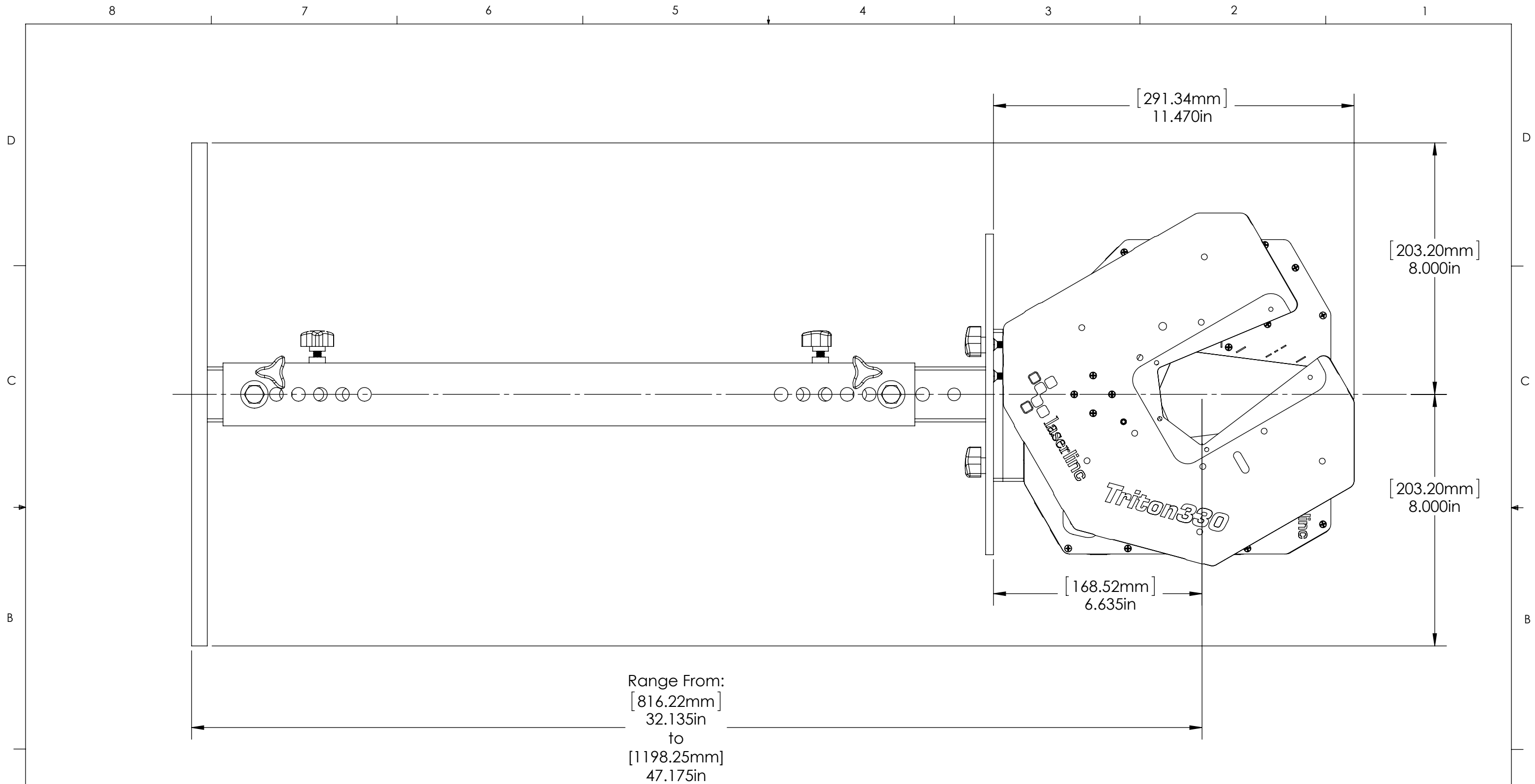
| | | | |
|--------------------------------------|--|---|----------------------|
| UNLESS OTHERWISE SPECIFIED: | | NAME | DATE |
| DIMENSIONS ARE IN INCHES | | DRAWN BY: | MAM 1/17/2013 |
| TOLERANCES: | | | |
| ANGULAR: MACH ± BEND ± | | | |
| TWO PLACE DECIMAL ±0.010 | | | |
| THREE PLACE DECIMAL ±0.005 | | | |
| FOUR PLACE DECIMAL ±0.0005 | | | |
| ANGLES ±.25° | | | |
| UNMARKED FILLETS/ROUNDS R.0625 | | | |
| DE-BURR ALL PARTS | | | |
| INTERPRET GEOMETRIC TOLERANCING PER: | | 63 RA SURFACE FINISH ALL FEATURES MUST MEET SPECIFICATION AFTER PLATING BEFORE POWDER-COAT IF PLATED OR POWDER-COATED SEE FINISH MACHINE ALL SURFACES | |
| MATERIAL | | TITLE: 00330-28 Stand for Dual Triton330 Overall Dimensions | |
| FINISH | | SIZE B | DWG. NO. 00330-28 |
| DO NOT SCALE DRAWING | | SCALE: 1:4 | REV A |
| | | SHEET 2 OF 3 | |



PROPRIETARY AND CONFIDENTIAL

THE INFORMATION CONTAINED IN THIS DRAWING IS THE SOLE PROPERTY OF LASERLINC, INC. ANY REPRODUCTION IN PART OR AS A WHOLE WITHOUT THE WRITTEN PERMISSION OF LASERLINC, INC IS PROHIBITED.

8 7 6 5 4 3 2 1



Range From:
 [816.22mm]
 32.135in
 to
 [1198.25mm]
 47.175in

| | | | |
|--|--|--|---------------|
| UNLESS OTHERWISE SPECIFIED: | | NAME | DATE |
| DIMENSIONS ARE IN INCHES | | DRAWN BY: | MAM 1/17/2013 |
| TOLERANCES: | | | |
| ANGULAR: MACH ± BEND ± | | | |
| TWO PLACE DECIMAL ±0.010 | | | |
| THREE PLACE DECIMAL ±0.005 | | | |
| FOUR PLACE DECIMAL ±0.0005 | | | |
| ANGLES ±.25° | | | |
| UNMARKED FILLETS/ROUNDS R.0625 | | | |
| DE-BURR ALL PARTS | | | |
| INTERPRET GEOMETRIC TOLERANCING PER: | | 63 RA SURFACE FINISH | |
| MATERIAL | | ALL FEATURES MUST MEET SPECIFICATION AFTER PLATING | |
| FINISH | | BEFORE POWDER-COAT IF PLATED OR POWDER-COATED | |
| DO NOT SCALE DRAWING | | SEE FINISH MACHINE ALL SURFACES | |
| TITLE: | | SIZE | DWG. NO. |
| 00330-28 Stand for Dual Triton330 Overall Dimensions | | B | 00330-28 |
| | | SCALE: 1:3 | REV |
| | | | A |
| | | SHEET 3 OF 3 | |

PROPRIETARY AND CONFIDENTIAL

THE INFORMATION CONTAINED IN THIS DRAWING IS THE SOLE PROPERTY OF LASERLINC, INC. ANY REPRODUCTION IN PART OR AS A WHOLE WITHOUT THE WRITTEN PERMISSION OF LASERLINC, INC IS PROHIBITED.

laserline LaserLinc, Inc.
 Phone: 888-707-4892
 Info@laserline.com
 www.laserline.com