

8

7

6

5

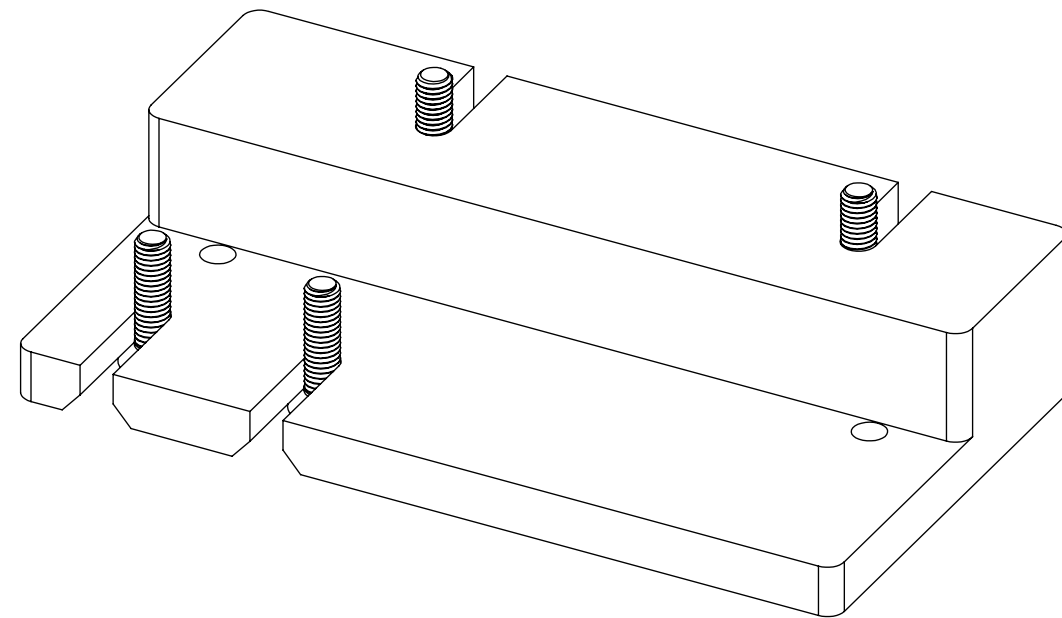
4

3

2

1


REVISIONS				
ZONE	REV.	DESCRIPTION	DATE	APPROVED
	A	Check-In	2/7/2013	MAM



# TRITON330-312 DUAL MOUNT FIXTURE OVERALLS

## INDEX

- (1) COVER PAGE
- (2) 312 DIMENSIONS
- (3) 330 DIMENSIONS

<b>GENERAL FINISH NOTE</b> <b>DE-BURR AND BREAK</b> <b>ALL SHARP EDGES</b> <b>BEFORE FINISH AND/OR SHIPPING</b>	UNLESS OTHERWISE SPECIFIED: DIMENSIONS ARE IN INCHES TOLERANCES: ANGLES ±.25° TWO PLACE DECIMAL ±0.010 THREE PLACE DECIMAL ±0.005 FOUR PLACE DECIMAL ±0.0005 UNMARKED FILLETS/CHAMFER .06 DE-BURR ALL PARTS	NAME EMM	DATE 12/11/2020	 <b>LASERLINC, INC.</b> PHONE: 888-707-4892 INFO@LASERLINC.COM WWW.LASERLINC.COM		
	<b>PROPRIETARY AND CONFIDENTIAL</b> THE INFORMATION CONTAINED IN THIS DRAWING IS THE SOLE PROPERTY OF LASERLINC, INC. ANY REPRODUCTION IN PART OR AS A WHOLE WITHOUT THE WRITTEN PERMISSION OF LASERLINC, INC. IS PROHIBITED.	INTERPRET GEOMETRIC TOLERANCING PER: ASME Y14.5 MATERIAL FINISH DO NOT SCALE DRAWING	DRAWN BY: NAME DATE		TITLE: 0300-0000-29 TRITON330-312 DUAL MOUNT FIXTURE OVERALLS	
		63 RA SURFACE FINISH ALL FEATURES MUST MEET SPECIFICATION AFTER PLATING BEFORE POWDER-COAT IF PLATED OR POWDER-COATED <b>SEE FINISH</b>		SIZE <b>B</b>	DWG. NO. 0300-0000-29	REV <b>A</b>
		SCALE: 1:1		SHEET 1 OF 3		

8

7

6

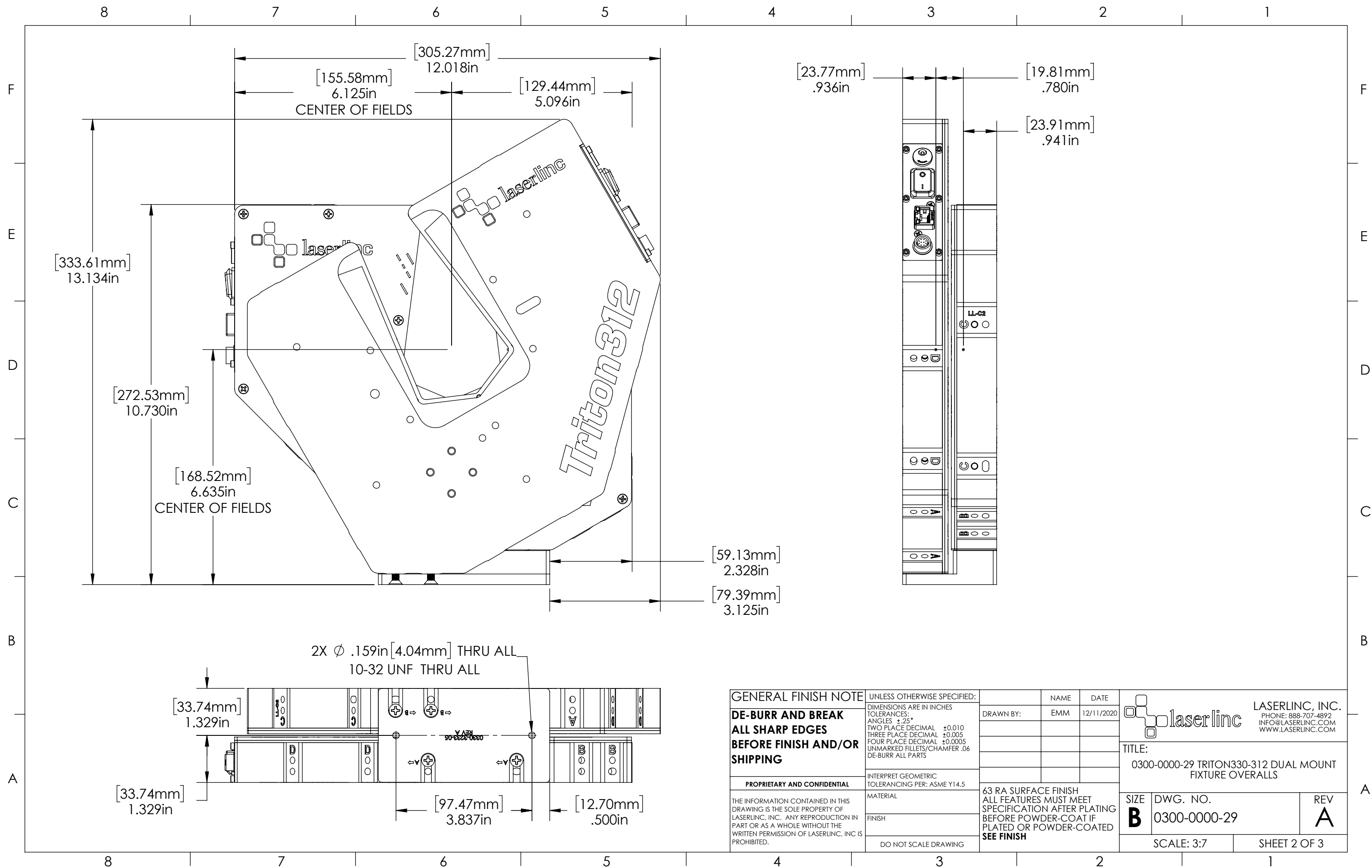
5

4

3

2

1



**GENERAL FINISH NOTE**

**DE-BURR AND BREAK ALL SHARP EDGES BEFORE FINISH AND/OR SHIPPING**

**PROPRIETARY AND CONFIDENTIAL**

THE INFORMATION CONTAINED IN THIS DRAWING IS THE SOLE PROPERTY OF LASERLINC, INC. ANY REPRODUCTION IN PART OR AS A WHOLE WITHOUT THE WRITTEN PERMISSION OF LASERLINC, INC. IS PROHIBITED.

UNLESS OTHERWISE SPECIFIED:

DIMENSIONS ARE IN INCHES

TOLERANCES:

- ANGLES  $\pm$ .25
- TWO PLACE DECIMAL  $\pm$ 0.010
- THREE PLACE DECIMAL  $\pm$ 0.005
- FOUR PLACE DECIMAL  $\pm$ 0.0005
- UNMARKED FILLETS/CHAMFER .06
- DE-BURR ALL PARTS

INTERPRET GEOMETRIC TOLERANCING PER: ASME Y14.5

MATERIAL

FINISH

DO NOT SCALE DRAWING

NAME	DATE
EMM	12/11/2020

63 RA SURFACE FINISH  
ALL FEATURES MUST MEET SPECIFICATION AFTER PLATING BEFORE POWDER-COAT IF PLATED OR POWDER-COATED  
**SEE FINISH**

**laserlinc** LASERLINC, INC.  
PHONE: 888-707-4892  
INFO@LASERLINC.COM  
WWW.LASERLINC.COM

TITLE:  
0300-0000-29 TRITON330-312 DUAL MOUNT FIXTURE OVERALLS

SIZE	DWG. NO.	REV
<b>B</b>	0300-0000-29	<b>A</b>

SCALE: 3:7 SHEET 2 OF 3