

REVISIONS				
ZONE	REV.	DESCRIPTION	DATE	APPROVED
	A	CHECK-IN	11/29/2011	MAM

0330-0001-00 TRITON330 TRIPLE-AXIS DATA MICROMETER OVERALL MOUNT DIMENSIONS

INDEX

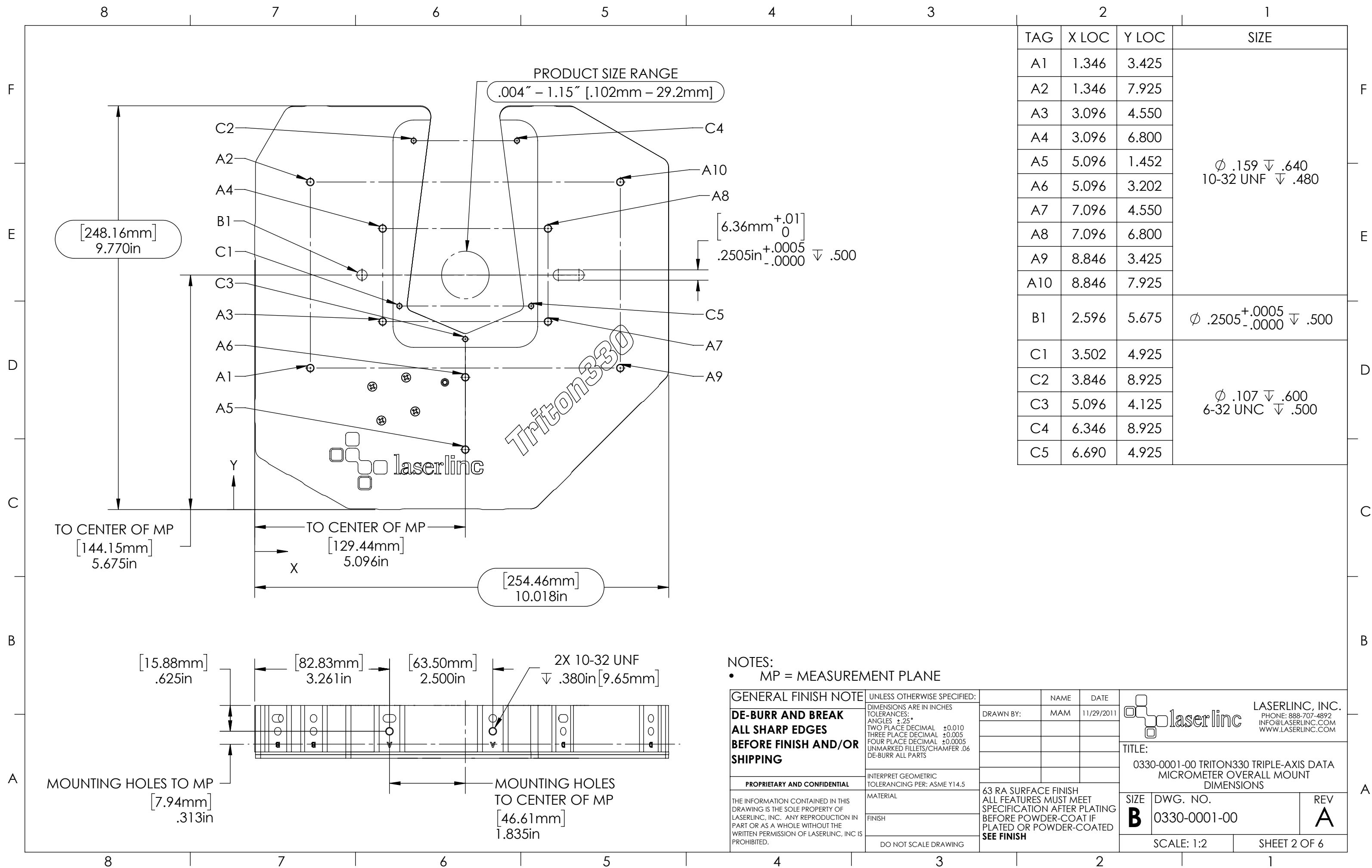
- (1) COVER PAGE
- (2) BACK & A-MOUNTING DIMENSIONS
- (3) B-MOUNTING DIMENSIONS
- (4) C-MOUNTING DIMENSIONS
- (5) D-MOUNTING DIMENSIONS
- (6) E-MOUNTING DIMENSIONS

NOTES:

- APPROX. WEIGHT: 8.5LBS [3.9KG]
- POWER REQUIREMENTS: 12VDC 125MA, +5VDC 75MA, -5VDC 50MA
- MEASUREMENTS PER SECOND (Hz): 900 [300 PER AXIS]
- RESOLUTION: .000001" [.025µm]
- REPEATABILITY² UN-AVERAGED: ±.0001" [±2.5µm]
- REPEATABILITY² TWO SECOND: ±.000005" [±.125µm]

GENERAL FINISH NOTE		UNLESS OTHERWISE SPECIFIED:		NAME	DATE
DE-BURR AND BREAK ALL SHARP EDGES BEFORE FINISH AND/OR SHIPPING		DIMENSIONS ARE IN INCHES TOLERANCES: ANGLES ±.25 TWO PLACE DECIMAL ±0.010 THREE PLACE DECIMAL ±0.005 FOUR PLACE DECIMAL ±0.0005 UNMARKED FILLETS/CHAMFER .06 DE-BURR ALL PARTS		DRAWN BY:	MAM 11/29/2011
PROPRIETARY AND CONFIDENTIAL		INTERPRET GEOMETRIC TOLERANCING PER: ASME Y14.5			
THE INFORMATION CONTAINED IN THIS DRAWING IS THE SOLE PROPERTY OF LASERLINC, INC. ANY REPRODUCTION IN PART OR AS A WHOLE WITHOUT THE WRITTEN PERMISSION OF LASERLINC, INC. IS PROHIBITED.		MATERIAL		63 RA SURFACE FINISH ALL FEATURES MUST MEET SPECIFICATION AFTER PLATING BEFORE POWDER-COAT IF PLATED OR POWDER-COATED SEE FINISH	
		FINISH		TITLE: 0330-0001-00 TRITON330 TRIPLE-AXIS DATA MICROMETER OVERALL MOUNT DIMENSIONS	
		DO NOT SCALE DRAWING		SIZE B	DWG. NO. 0330-0001-00
				REV A	
				SCALE: 3:4	SHEET 1 OF 6

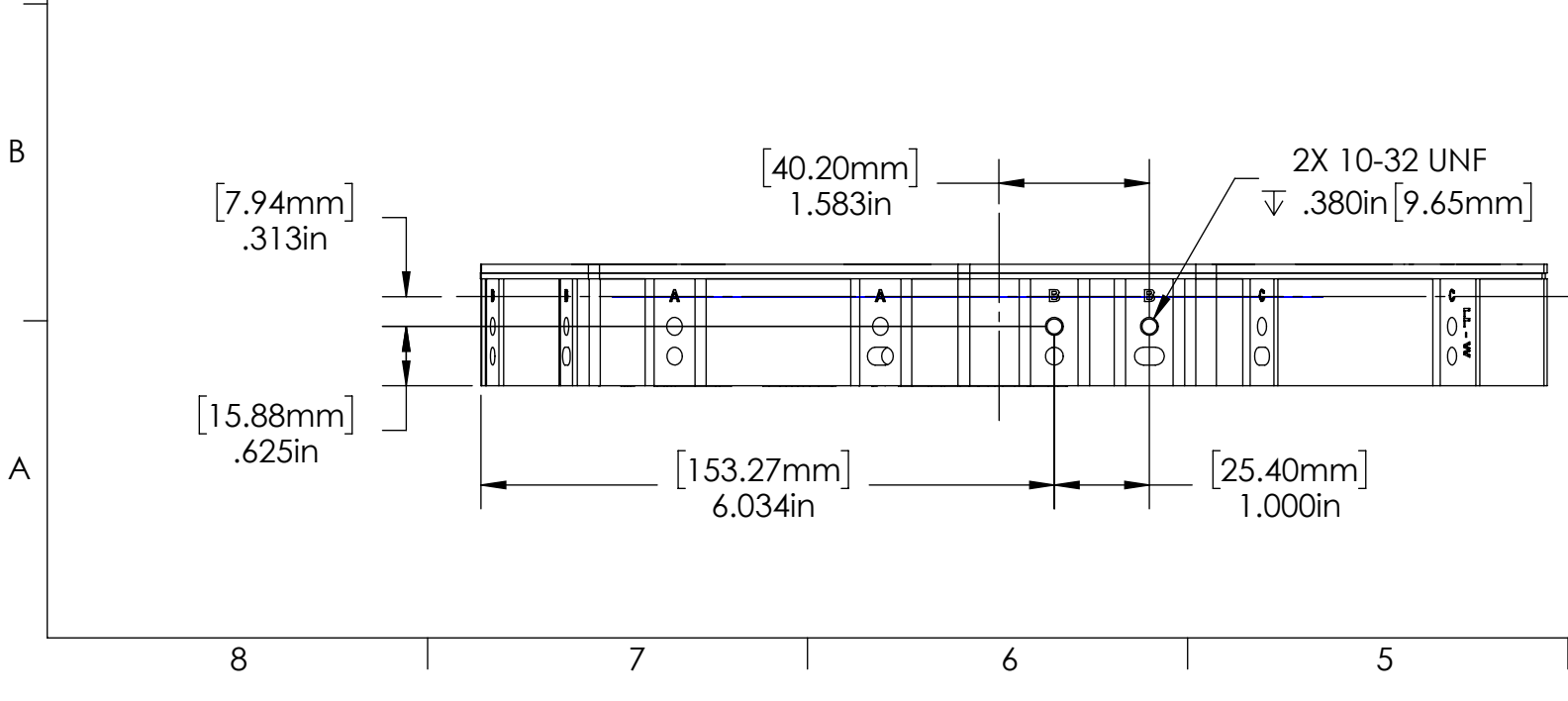
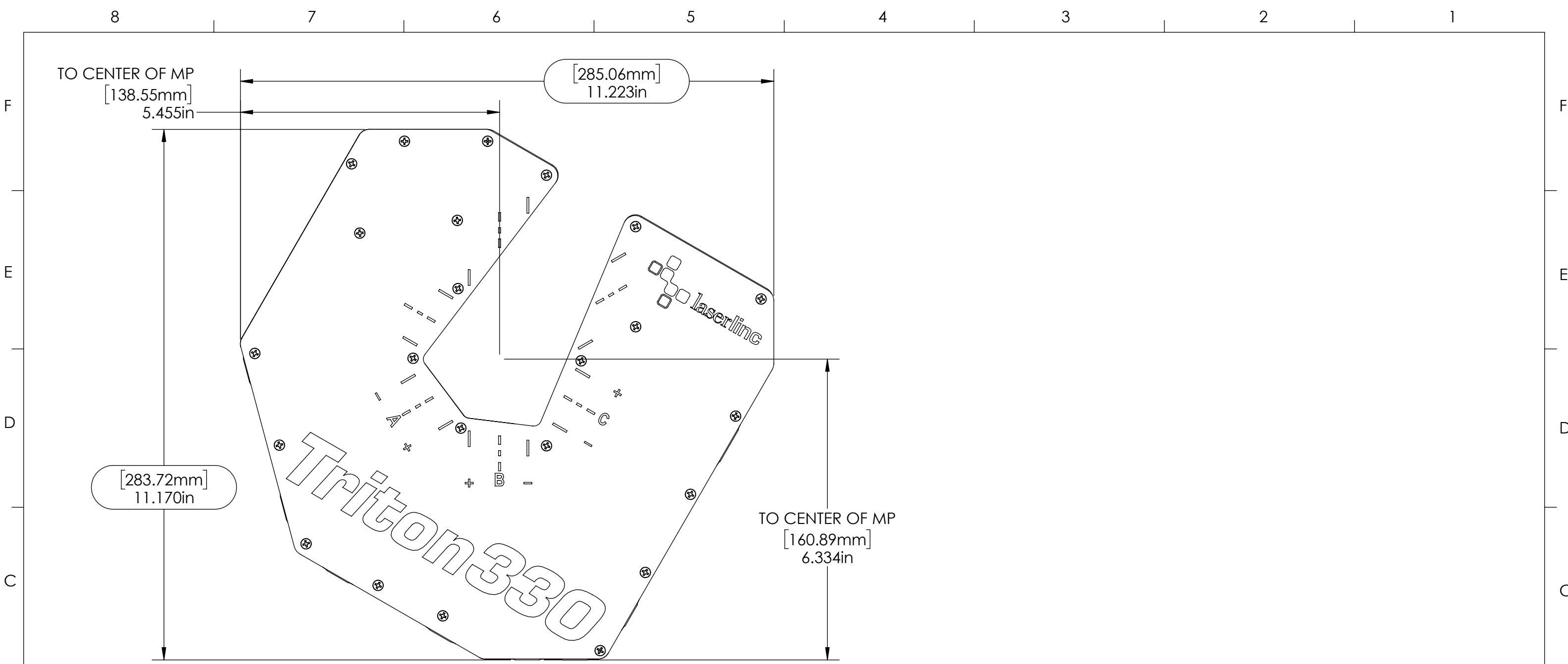




TAG	X LOC	Y LOC	SIZE
A1	1.346	3.425	$\phi .159 \downarrow .640$ 10-32 UNF $\downarrow .480$
A2	1.346	7.925	
A3	3.096	4.550	
A4	3.096	6.800	
A5	5.096	1.452	
A6	5.096	3.202	
A7	7.096	4.550	
A8	7.096	6.800	
A9	8.846	3.425	
A10	8.846	7.925	
B1	2.596	5.675	$\phi .2505^{+.0005} \downarrow .500$
C1	3.502	4.925	$\phi .107 \downarrow .600$ 6-32 UNC $\downarrow .500$
C2	3.846	8.925	
C3	5.096	4.125	
C4	6.346	8.925	
C5	6.690	4.925	

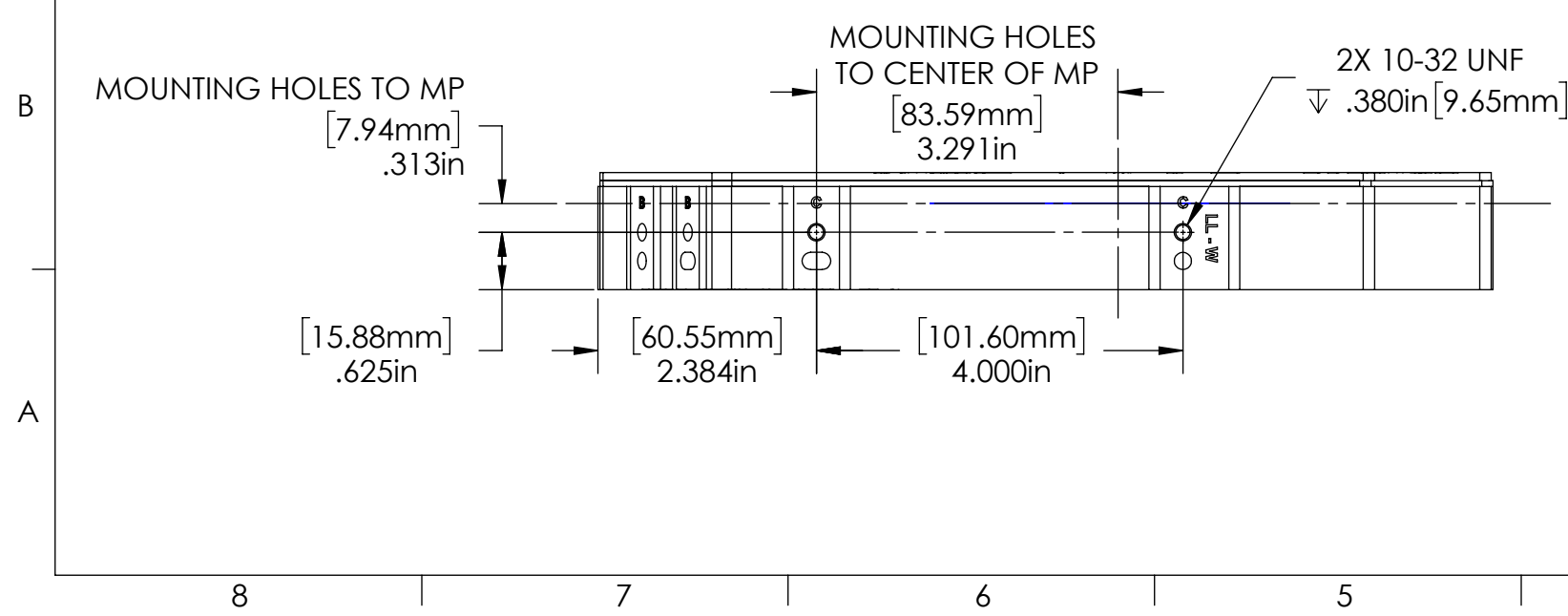
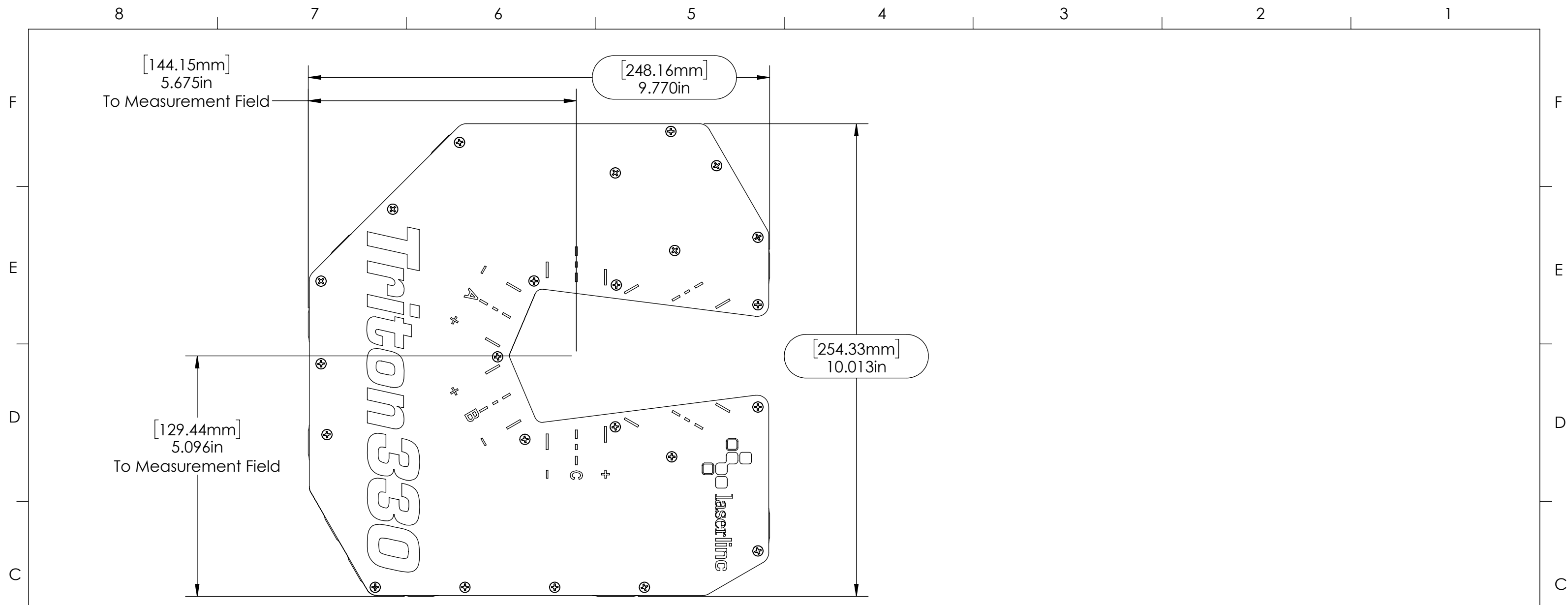
NOTES:
 • MP = MEASUREMENT PLANE

GENERAL FINISH NOTE DE-BURR AND BREAK ALL SHARP EDGES BEFORE FINISH AND/OR SHIPPING	UNLESS OTHERWISE SPECIFIED: DIMENSIONS ARE IN INCHES TOLERANCES: ANGLES $\pm .25^\circ$ TWO PLACE DECIMAL ± 0.010 THREE PLACE DECIMAL ± 0.005 FOUR PLACE DECIMAL ± 0.0005 UNMARKED FILLETS/CHAMFER .06 DE-BURR ALL PARTS	NAME MAM	DATE 11/29/2011	 LASERLINC, INC. PHONE: 888-707-4892 INFO@LASERLINC.COM WWW.LASERLINC.COM
	PROPRIETARY AND CONFIDENTIAL	INTERPRET GEOMETRIC TOLERANCING PER: ASME Y14.5	TITLE: 0330-0001-00 TRITON330 TRIPLE-AXIS DATA MICROMETER OVERALL MOUNT DIMENSIONS	
THE INFORMATION CONTAINED IN THIS DRAWING IS THE SOLE PROPERTY OF LASERLINC, INC. ANY REPRODUCTION IN PART OR AS A WHOLE WITHOUT THE WRITTEN PERMISSION OF LASERLINC, INC. IS PROHIBITED.	MATERIAL FINISH DO NOT SCALE DRAWING	63 RA SURFACE FINISH ALL FEATURES MUST MEET SPECIFICATION AFTER PLATING BEFORE POWDER-COAT IF PLATED OR POWDER-COATED SEE FINISH		SIZE B
		DWG. NO. 0330-0001-00	REV A	SCALE: 1:2 SHEET 2 OF 6




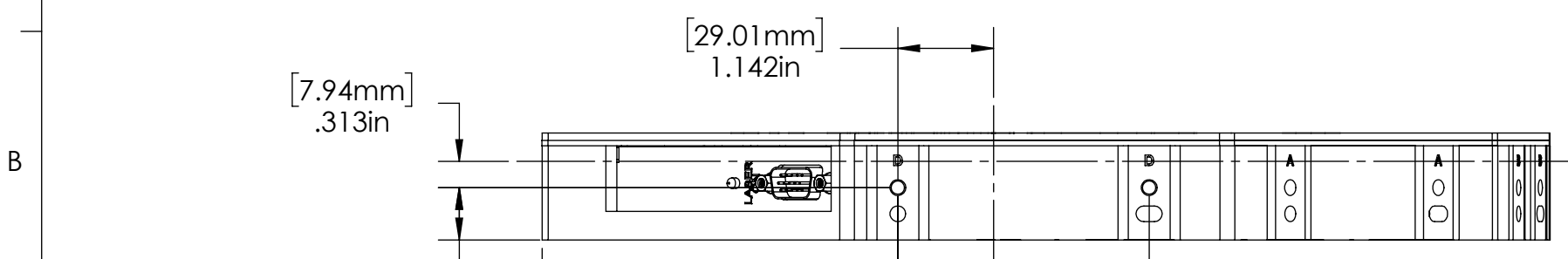
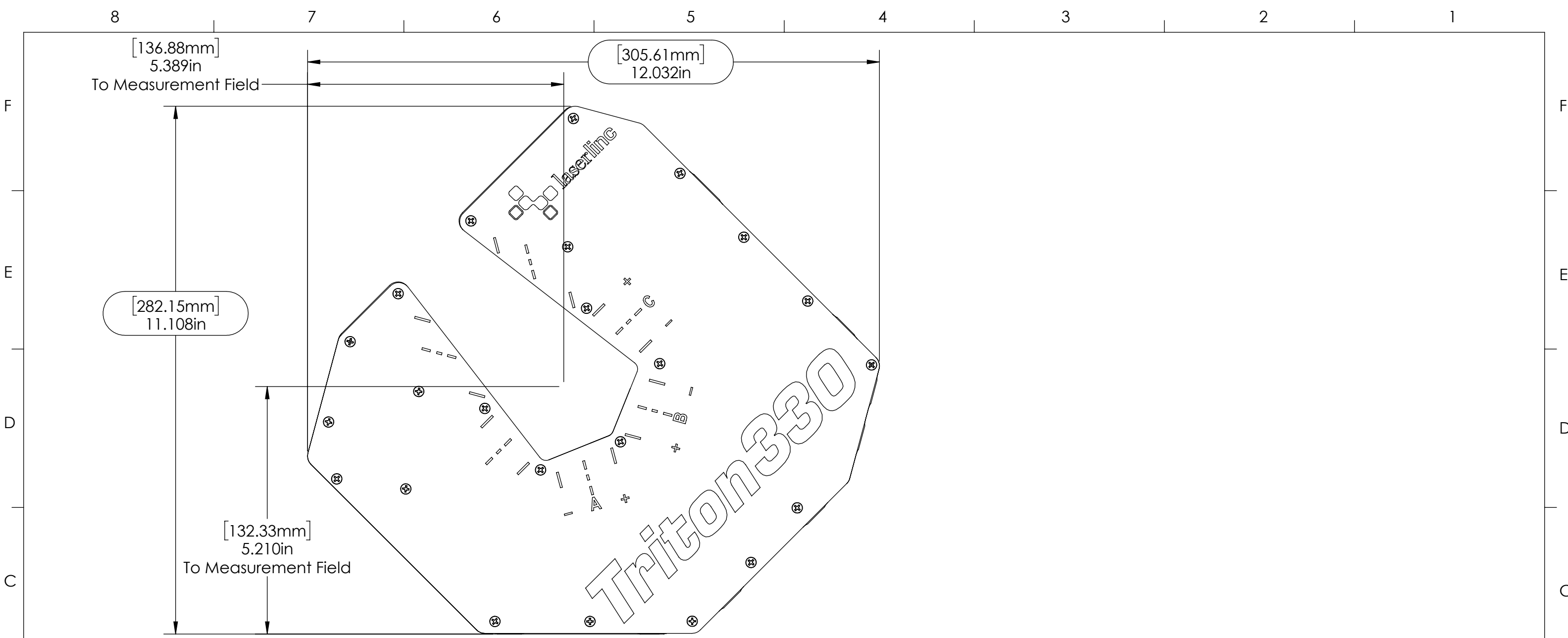
NOTES:
 • MP = MEASUREMENT PLANE

GENERAL FINISH NOTE DE-BURR AND BREAK ALL SHARP EDGES BEFORE FINISH AND/OR SHIPPING	UNLESS OTHERWISE SPECIFIED: DIMENSIONS ARE IN INCHES TOLERANCES: ANGLES ±.25° TWO PLACE DECIMAL ±0.010 THREE PLACE DECIMAL ±0.005 FOUR PLACE DECIMAL ±0.0005 UNMARKED FILLETS/CHAMFER .06 DE-BURR ALL PARTS	NAME MAM	DATE 11/29/2011		LASERLINC, INC. PHONE: 888-707-4892 INFO@LASERLINC.COM WWW.LASERLINC.COM
	INTERPRET GEOMETRIC TOLERANCING PER: ASME Y14.5	DRAWN BY:			
PROPRIETARY AND CONFIDENTIAL THE INFORMATION CONTAINED IN THIS DRAWING IS THE SOLE PROPERTY OF LASERLINC, INC. ANY REPRODUCTION IN PART OR AS A WHOLE WITHOUT THE WRITTEN PERMISSION OF LASERLINC, INC. IS PROHIBITED.	MATERIAL FINISH DO NOT SCALE DRAWING	63 RA SURFACE FINISH ALL FEATURES MUST MEET SPECIFICATION AFTER PLATING BEFORE POWDER-COAT IF PLATED OR POWDER-COATED SEE FINISH		TITLE: 0330-0001-00 TRITON330 TRIPLE-AXIS DATA MICROMETER OVERALL MOUNT DIMENSIONS	
		SIZE B	DWG. NO. 0330-0001-00	REV A	
		SCALE: 1:2		SHEET 3 OF 6	



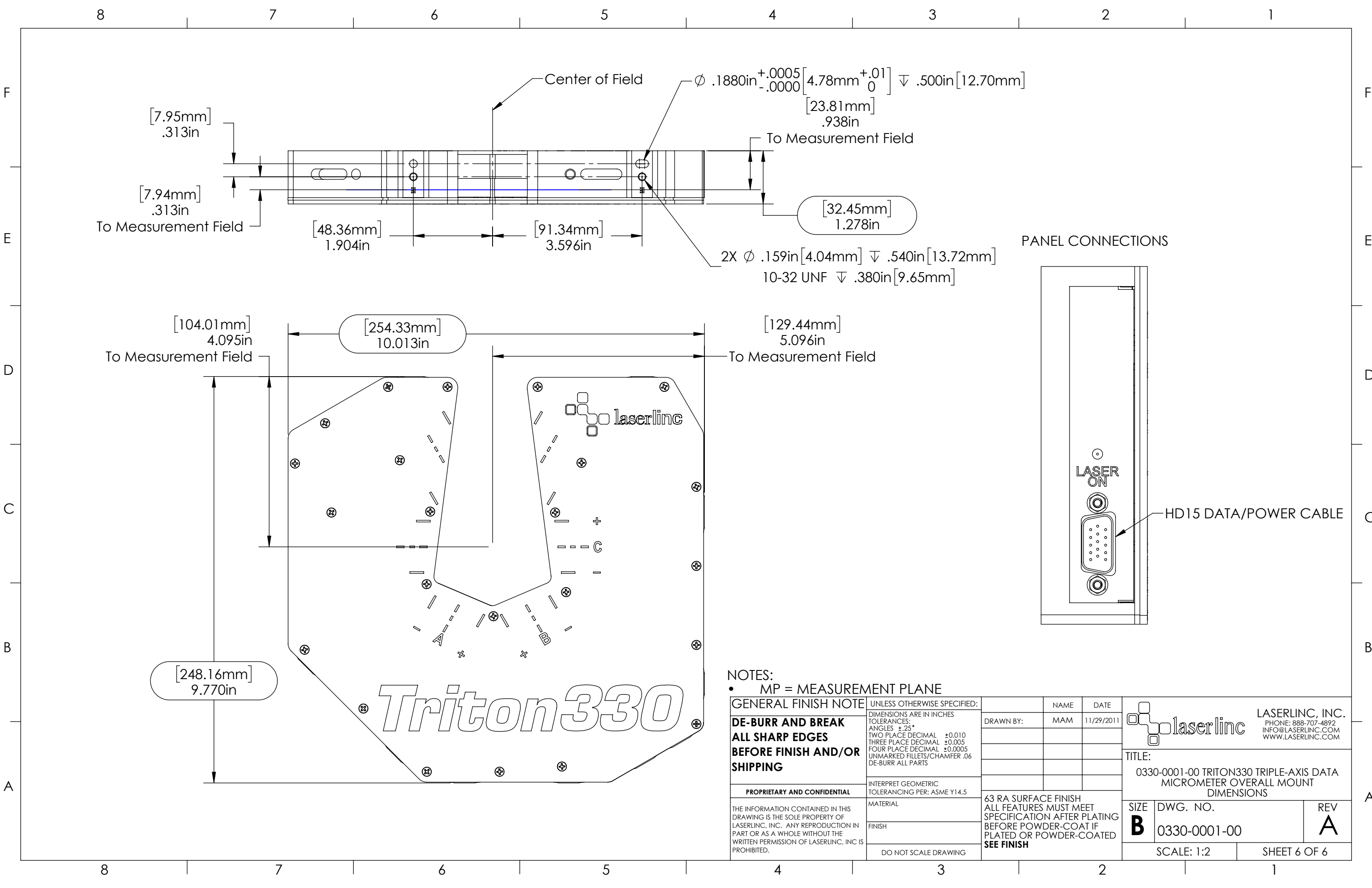
NOTES:
 • MP = MEASUREMENT PLANE

GENERAL FINISH NOTE DE-BURR AND BREAK ALL SHARP EDGES BEFORE FINISH AND/OR SHIPPING	UNLESS OTHERWISE SPECIFIED: DIMENSIONS ARE IN INCHES TOLERANCES: ANGLES ±.25° TWO PLACE DECIMAL ±0.010 THREE PLACE DECIMAL ±0.005 FOUR PLACE DECIMAL ±0.0005 UNMARKED FILLETS/CHAMFER .06 DE-BURR ALL PARTS	NAME MAM	DATE 11/29/2011	 LASERLINC, INC. PHONE: 888-707-4892 INFO@LASERLINC.COM WWW.LASERLINC.COM
	PROPRIETARY AND CONFIDENTIAL THE INFORMATION CONTAINED IN THIS DRAWING IS THE SOLE PROPERTY OF LASERLINC, INC. ANY REPRODUCTION IN PART OR AS A WHOLE WITHOUT THE WRITTEN PERMISSION OF LASERLINC, INC. IS PROHIBITED.	INTERPRET GEOMETRIC TOLERANCING PER: ASME Y14.5 MATERIAL FINISH DO NOT SCALE DRAWING	DRAWN BY:	
		63 RA SURFACE FINISH ALL FEATURES MUST MEET SPECIFICATION AFTER PLATING BEFORE POWDER-COAT IF PLATED OR POWDER-COATED SEE FINISH		SIZE B
		DWG. NO. 0330-0001-00		REV A
		SCALE: 1:2		SHEET 4 OF 6



NOTES:
 • MP = MEASUREMENT PLANE

GENERAL FINISH NOTE DE-BURR AND BREAK ALL SHARP EDGES BEFORE FINISH AND/OR SHIPPING	UNLESS OTHERWISE SPECIFIED: DIMENSIONS ARE IN INCHES TOLERANCES: ANGLES ±.25° TWO PLACE DECIMAL ±0.010 THREE PLACE DECIMAL ±0.005 FOUR PLACE DECIMAL ±0.0005 UNMARKED FILLETS/CHAMFER .06 DE-BURR ALL PARTS	NAME MAM	DATE 11/29/2011		LASERLINC, INC. PHONE: 888-707-4892 INFO@LASERLINC.COM WWW.LASERLINC.COM
	PROPRIETARY AND CONFIDENTIAL THE INFORMATION CONTAINED IN THIS DRAWING IS THE SOLE PROPERTY OF LASERLINC, INC. ANY REPRODUCTION IN PART OR AS A WHOLE WITHOUT THE WRITTEN PERMISSION OF LASERLINC, INC. IS PROHIBITED.	INTERPRET GEOMETRIC TOLERANCING PER: ASME Y14.5	DRAWN BY:		
MATERIAL FINISH DO NOT SCALE DRAWING	63 RA SURFACE FINISH ALL FEATURES MUST MEET SPECIFICATION AFTER PLATING BEFORE POWDER-COAT IF PLATED OR POWDER-COATED SEE FINISH	SIZE B	DWG. NO. 0330-0001-00	REV A	SCALE: 1:2 SHEET 5 OF 6



8 7 6 5 4 3 2 1

F
E
D
C
B
A

F
E
D
C
B
A

Center of Field

$\phi .1880\text{in}^{+.0005}_{-.0000}$ $[4.78\text{mm}^{+.01}_0]$ $\nabla .500\text{in} [12.70\text{mm}]$

$[23.81\text{mm}]$
.938in

To Measurement Field

$[7.95\text{mm}]$
.313in

$[7.94\text{mm}]$
.313in

To Measurement Field

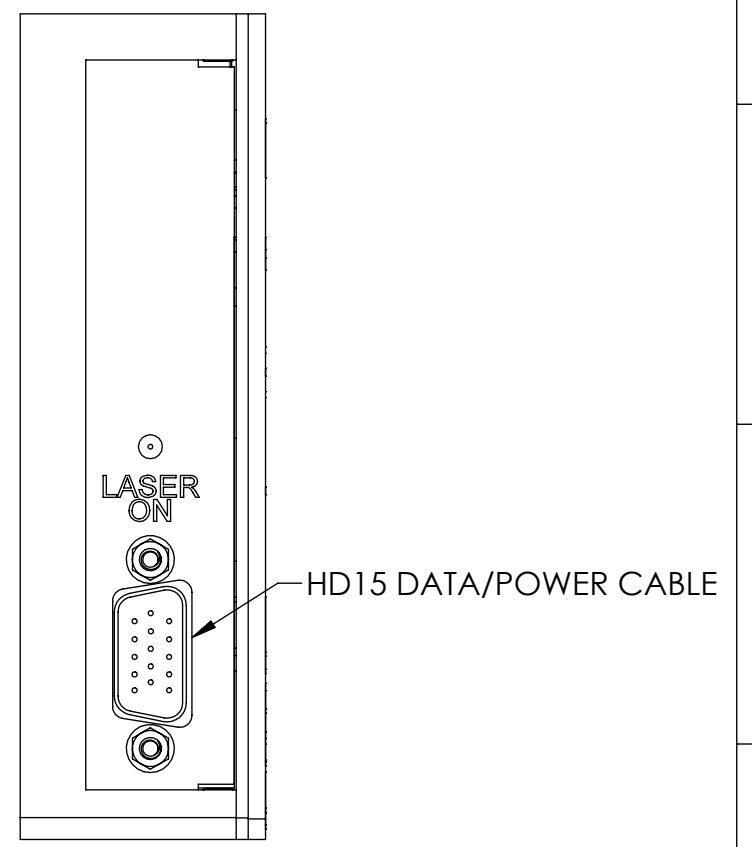
$[48.36\text{mm}]$
1.904in

$[91.34\text{mm}]$
3.596in

$[32.45\text{mm}]$
1.278in

$2X \phi .159\text{in} [4.04\text{mm}] \nabla .540\text{in} [13.72\text{mm}]$
10-32 UNF $\nabla .380\text{in} [9.65\text{mm}]$

PANEL CONNECTIONS



$[104.01\text{mm}]$
4.095in

To Measurement Field

$[254.33\text{mm}]$
10.013in

$[129.44\text{mm}]$
5.096in

To Measurement Field

laserline

Triton 330

$[248.16\text{mm}]$
9.770in

- NOTES:
- MP = MEASUREMENT PLANE

GENERAL FINISH NOTE		UNLESS OTHERWISE SPECIFIED:		NAME	DATE
DE-BURR AND BREAK ALL SHARP EDGES BEFORE FINISH AND/OR SHIPPING		DIMENSIONS ARE IN INCHES		DRAWN BY:	MAM
PROPRIETARY AND CONFIDENTIAL		TOLERANCES:			
THE INFORMATION CONTAINED IN THIS DRAWING IS THE SOLE PROPERTY OF LASERLINC, INC. ANY REPRODUCTION IN PART OR AS A WHOLE WITHOUT THE WRITTEN PERMISSION OF LASERLINC, INC. IS PROHIBITED.		ANGLES $\pm .25$			
		TWO PLACE DECIMAL ± 0.010			
		THREE PLACE DECIMAL ± 0.005			
		FOUR PLACE DECIMAL ± 0.0005			
		UNMARKED FILLETS/CHAMFER .06			
		DE-BURR ALL PARTS			
		INTERPRET GEOMETRIC TOLERANCING PER: ASME Y14.5			
		MATERIAL		63 RA SURFACE FINISH ALL FEATURES MUST MEET SPECIFICATION AFTER PLATING BEFORE POWDER-COAT IF PLATED OR POWDER-COATED SEE FINISH	
		FINISH			
		DO NOT SCALE DRAWING			
				LASERLINC, INC. PHONE: 888-707-4892 INFO@LASERLINC.COM WWW.LASERLINC.COM	
				TITLE: 0330-0001-00 TRITON330 TRIPLE-AXIS DATA MICROMETER OVERALL MOUNT DIMENSIONS	
		SIZE	DWG. NO.	REV	
		B	0330-0001-00	A	
		SCALE: 1:2		SHEET 6 OF 6	

8 7 6 5 4 3 2 1