

8

7

6

5

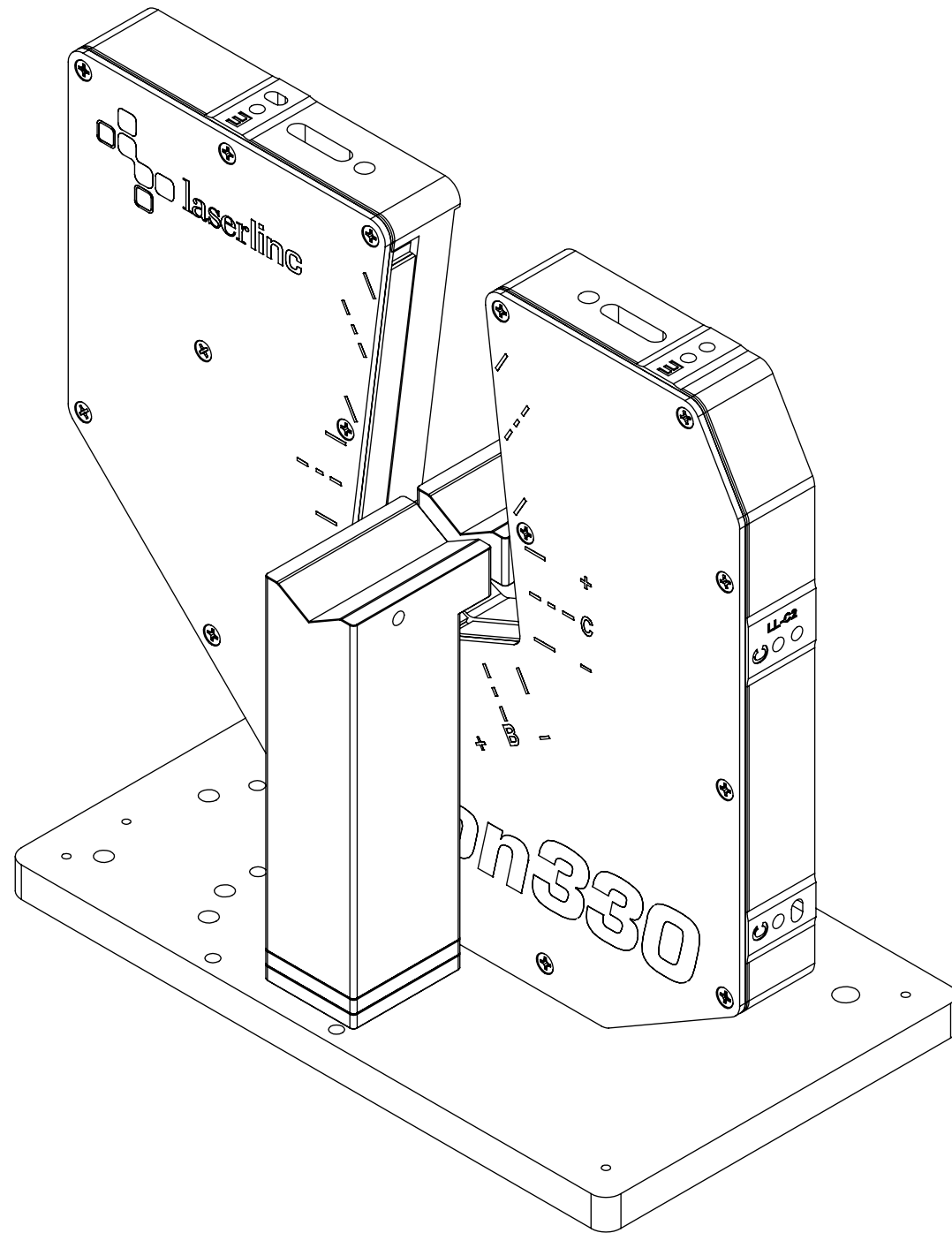
4

3

2

1

ZONE		REV.	DESCRIPTION	DATE	APPROVED
		A	Check-in	10/19/2011	ZRP



# TRITON330 V-BLOCK FIXTURE, BLACK DELRIN OVERALLS

## INDEX

- (1) COVER PAGE
- (2) NO RISER FIXTURE DIMENSIONS
- (3) NO RISER MOUNTING DIMENSIONS
- (4) SINGLE RISER FIXTURE DIMENSIONS
- (5) SINGLE RISER MOUNTING DIMENSIONS
- (6) DUAL RISER FIXTURE DIMENSIONS
- (7) DUAL RISER MOUNTING DIMENSIONS

<b>GENERAL FINISH NOTE</b>		UNLESS OTHERWISE SPECIFIED:		NAME	DATE
<b>DE-BURR AND BREAK</b>		DIMENSIONS ARE IN INCHES		DRAWN BY:	EMM
<b>ALL SHARP EDGES</b>		TOLERANCES:			11/5/2020
<b>BEFORE FINISH AND/OR SHIPPING</b>		ANGLES ±.25°			
<b>PROPRIETARY AND CONFIDENTIAL</b>		TWO PLACE DECIMAL ±0.010			
THE INFORMATION CONTAINED IN THIS DRAWING IS THE SOLE PROPERTY OF LASERLINC, INC. ANY REPRODUCTION IN PART OR AS A WHOLE WITHOUT THE WRITTEN PERMISSION OF LASERLINC, INC. IS PROHIBITED.		THREE PLACE DECIMAL ±0.005			
		FOUR PLACE DECIMAL ±0.0005			
		UNMARKED FILLETS/CHAMFER .06			
		DE-BURR ALL PARTS			
		INTERPRET GEOMETRIC TOLERANCING PER: ASME Y14.5			
		MATERIAL LL			
		FINISH			
		DO NOT SCALE DRAWING			
		63 RA SURFACE FINISH			
		ALL FEATURES MUST MEET SPECIFICATION AFTER PLATING BEFORE POWDER-COAT IF PLATED OR POWDER-COATED			
		<b>SEE FINISH</b>			
		Laserline		LASERLINC, INC. PHONE: 888-707-4892 INFO@LASERLINC.COM WWW.LASERLINC.COM	
		TITLE:		0330-0002-21 TRITON330 V-BLOCK FIXTURE, BLACK DELRIN OVERALLS	
SIZE	DWG. NO.	REV			
<b>B</b>	0330-0002-21	<b>A</b>			
SCALE: 1:2		SHEET 1 OF 7			

8

7

6

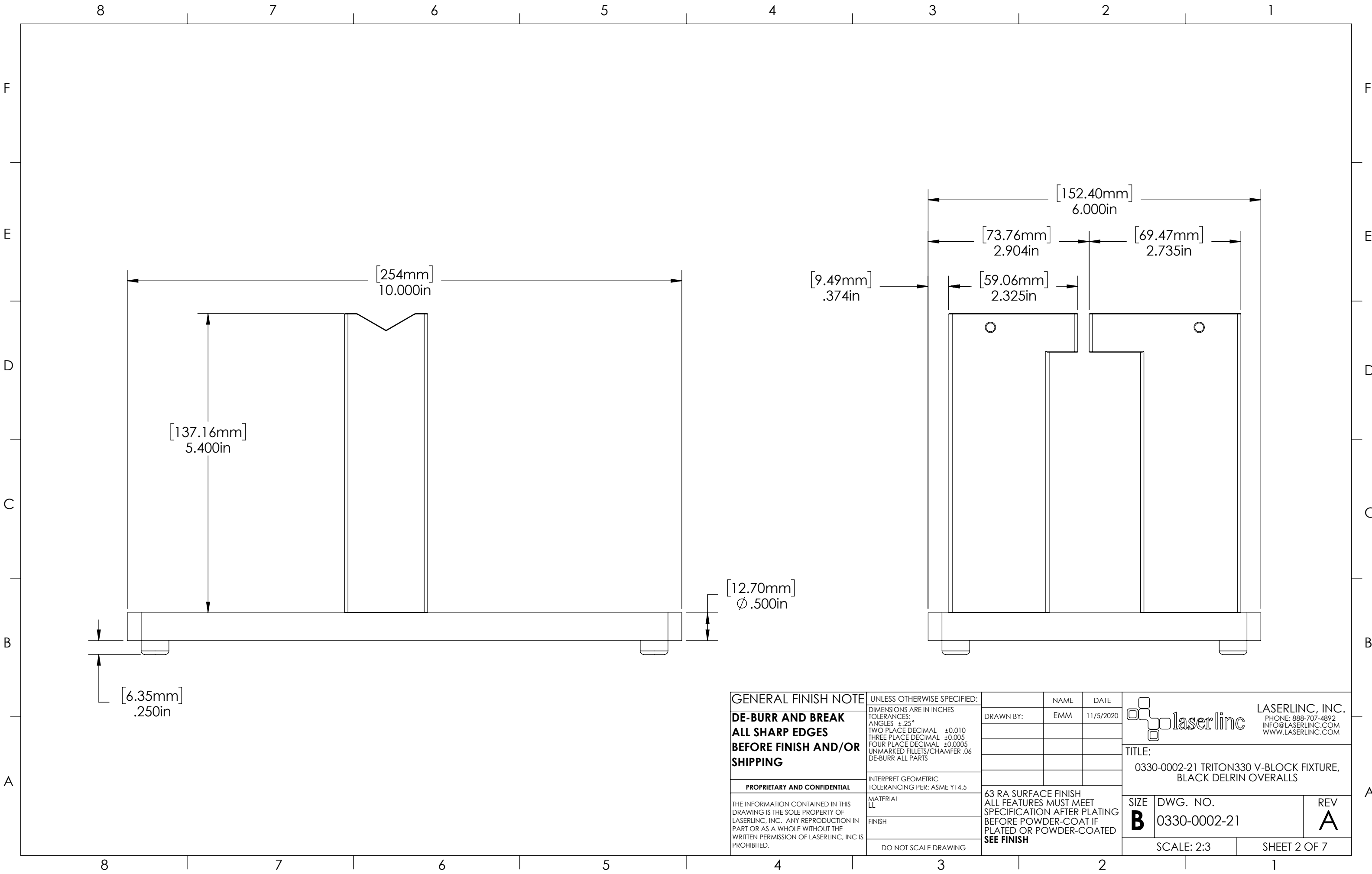
5

4

3

2

1



**GENERAL FINISH NOTE**

**DE-BURR AND BREAK ALL SHARP EDGES BEFORE FINISH AND/OR SHIPPING**

**PROPRIETARY AND CONFIDENTIAL**

THE INFORMATION CONTAINED IN THIS DRAWING IS THE SOLE PROPERTY OF LASERLINC, INC. ANY REPRODUCTION IN PART OR AS A WHOLE WITHOUT THE WRITTEN PERMISSION OF LASERLINC, INC. IS PROHIBITED.

UNLESS OTHERWISE SPECIFIED:

DIMENSIONS ARE IN INCHES

TOLERANCES:

- ANGLES  $\pm$ .25°
- TWO PLACE DECIMAL  $\pm$ 0.010
- THREE PLACE DECIMAL  $\pm$ 0.005
- FOUR PLACE DECIMAL  $\pm$ 0.0005
- UNMARKED FILLETS/CHAMFER .06
- DE-BURR ALL PARTS

INTERPRET GEOMETRIC TOLERANCING PER: ASME Y14.5

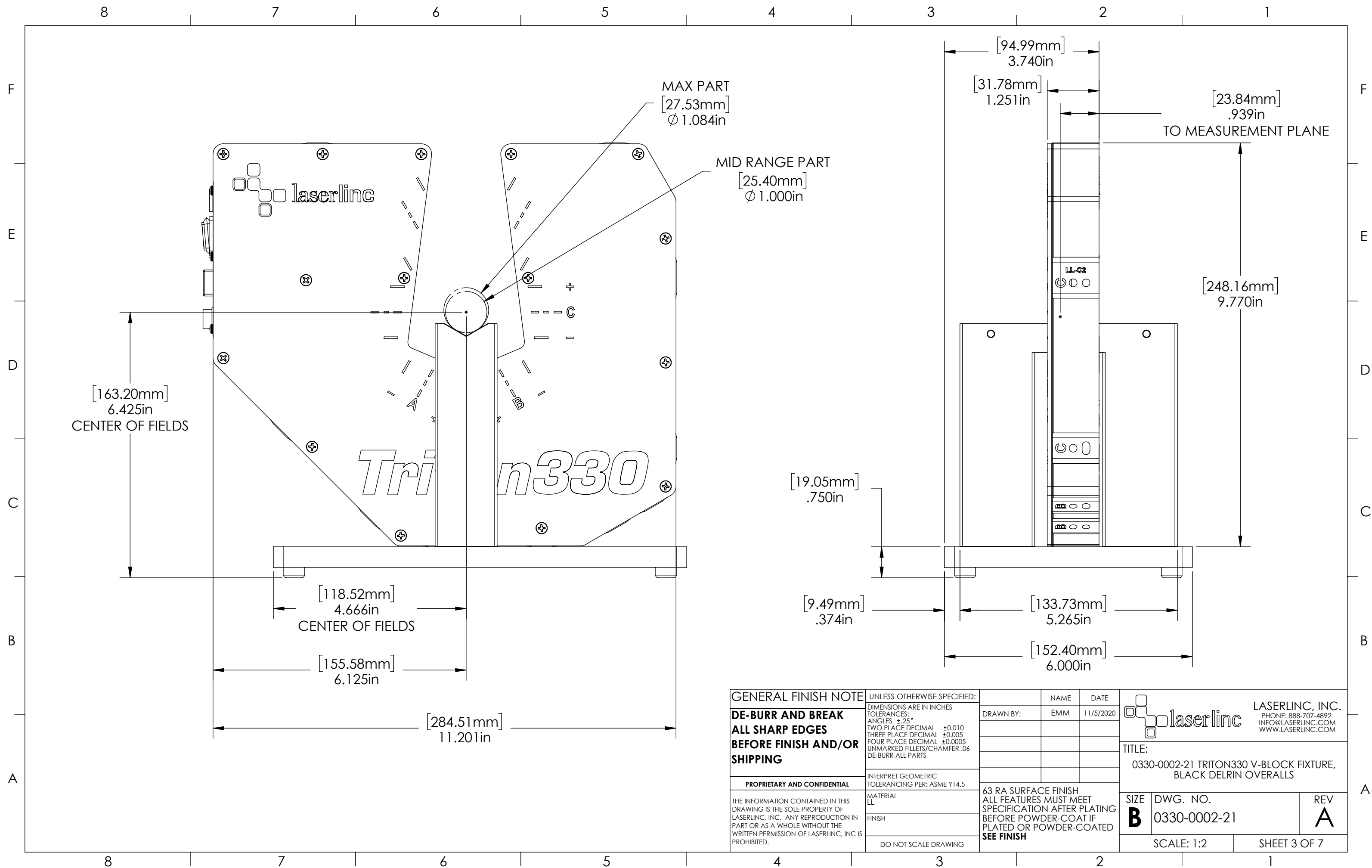
MATERIAL LL

FINISH

DO NOT SCALE DRAWING

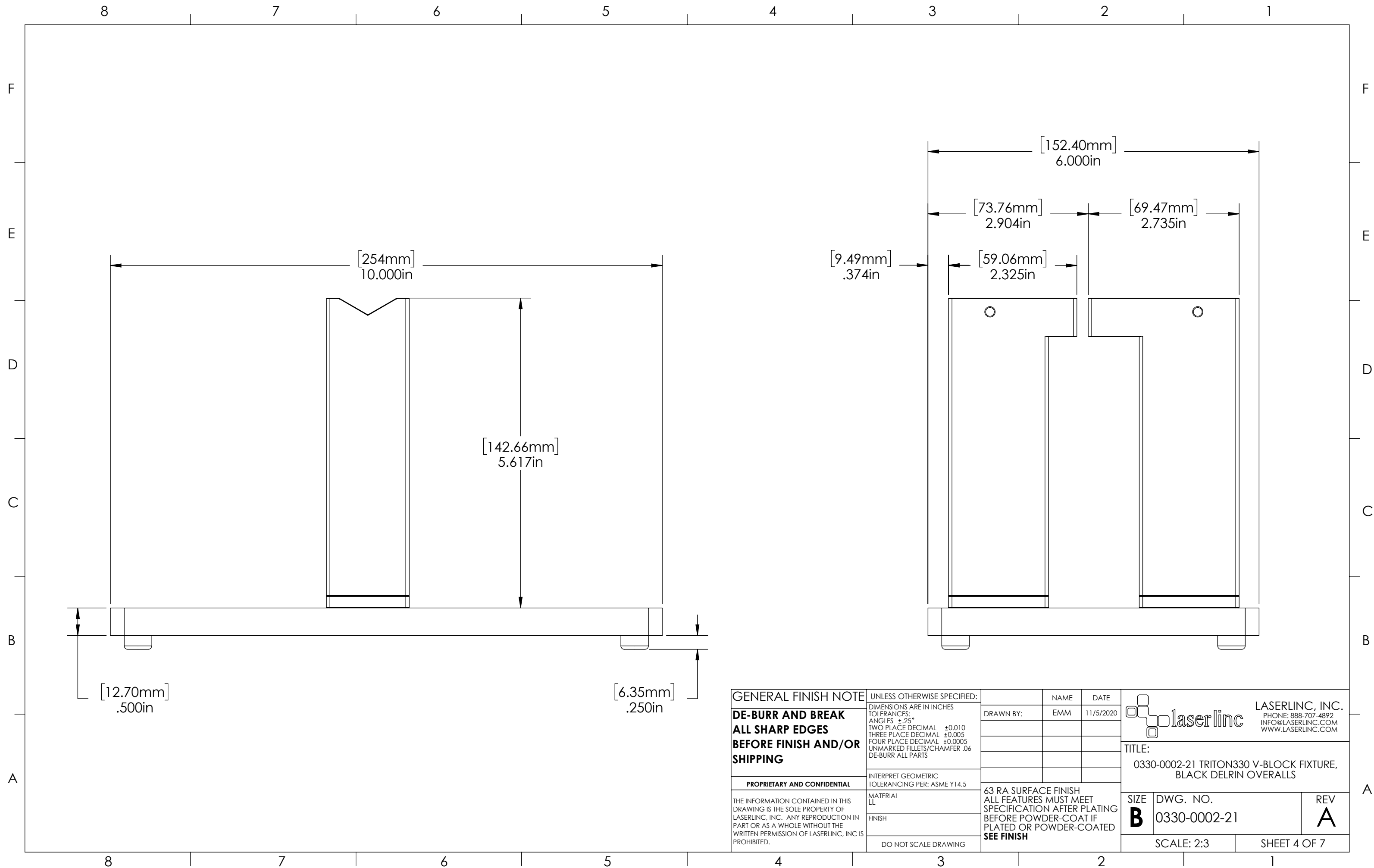
NAME	DATE
EMM	11/5/2020
DRAWN BY:	
63 RA SURFACE FINISH	
ALL FEATURES MUST MEET SPECIFICATION AFTER PLATING BEFORE POWDER-COAT IF PLATED OR POWDER-COATED	
<b>SEE FINISH</b>	

		<b>LASERLINC, INC.</b> PHONE: 888-707-4892 INFO@LASERLINC.COM WWW.LASERLINC.COM	
<b>TITLE:</b> 0330-0002-21 TRITON330 V-BLOCK FIXTURE, BLACK DELRIN OVERALLS			
<b>SIZE</b> <b>B</b>	<b>DWG. NO.</b> 0330-0002-21	<b>REV</b> <b>A</b>	
SCALE: 2:3		SHEET 2 OF 7	



<b>GENERAL FINISH NOTE</b>		UNLESS OTHERWISE SPECIFIED:		NAME	DATE
<b>DE-BURR AND BREAK ALL SHARP EDGES BEFORE FINISH AND/OR SHIPPING</b>		DIMENSIONS ARE IN INCHES TOLERANCES: ANGLES ±.25° TWO PLACE DECIMAL ±0.010 THREE PLACE DECIMAL ±0.005 FOUR PLACE DECIMAL ±0.0005 UNMARKED FILLETS/CHAMFER .06 DE-BURR ALL PARTS		DRAWN BY:	EMM 11/5/2020
<b>PROPRIETARY AND CONFIDENTIAL</b>		INTERPRET GEOMETRIC TOLERANCING PER: ASME Y14.5			
THE INFORMATION CONTAINED IN THIS DRAWING IS THE SOLE PROPERTY OF LASERLINC, INC. ANY REPRODUCTION IN PART OR AS A WHOLE WITHOUT THE WRITTEN PERMISSION OF LASERLINC, INC. IS PROHIBITED.		MATERIAL LL		63 RA SURFACE FINISH ALL FEATURES MUST MEET SPECIFICATION AFTER PLATING BEFORE POWDER-COAT IF PLATED OR POWDER-COATED <b>SEE FINISH</b>	
		FINISH			
		DO NOT SCALE DRAWING		TITLE: 0330-0002-21 TRITON330 V-BLOCK FIXTURE, BLACK DELRIN OVERALLS	
				SIZE <b>B</b>	DWG. NO. 0330-0002-21
				REV <b>A</b>	
				SCALE: 1:2	SHEET 3 OF 7

**laserline** LASERLINC, INC.  
PHONE: 888-707-4892  
INFO@LASERLINC.COM  
WWW.LASERLINC.COM



**GENERAL FINISH NOTE**  
**DE-BURR AND BREAK**  
**ALL SHARP EDGES**  
**BEFORE FINISH AND/OR**  
**SHIPPING**


**PROPRIETARY AND CONFIDENTIAL**  
 THE INFORMATION CONTAINED IN THIS DRAWING IS THE SOLE PROPERTY OF LASERLINC, INC. ANY REPRODUCTION IN PART OR AS A WHOLE WITHOUT THE WRITTEN PERMISSION OF LASERLINC, INC. IS PROHIBITED.

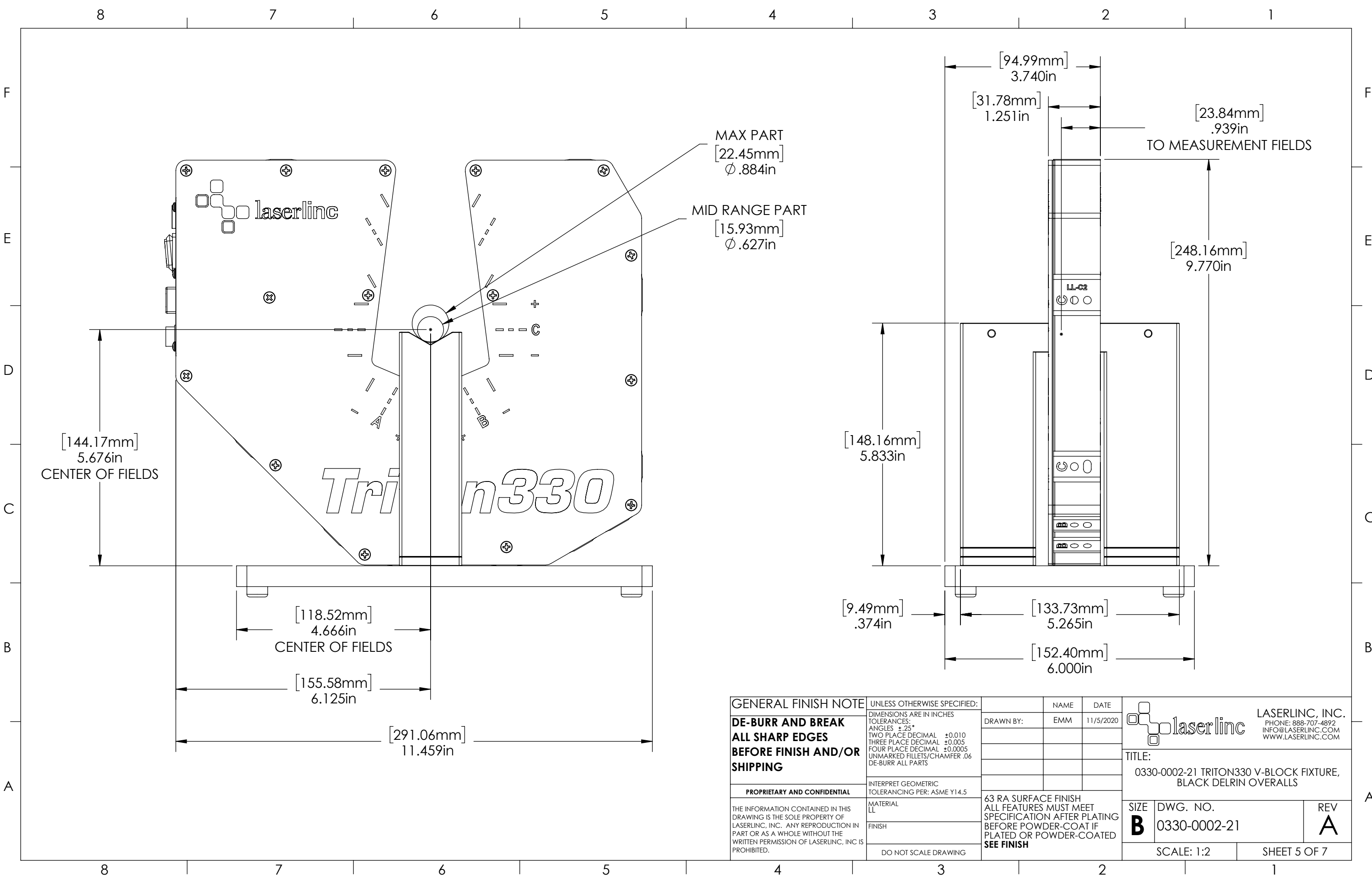
UNLESS OTHERWISE SPECIFIED:  
 DIMENSIONS ARE IN INCHES  
 TOLERANCES:  
 ANGLES ±.25°  
 TWO PLACE DECIMAL ±0.010  
 THREE PLACE DECIMAL ±0.005  
 FOUR PLACE DECIMAL ±0.0005  
 UNMARKED FILLETS/CHAMFER .06  
 DE-BURR ALL PARTS

INTERPRET GEOMETRIC TOLERANCING PER: ASME Y14.5  
 MATERIAL LL  
 FINISH  
 DO NOT SCALE DRAWING

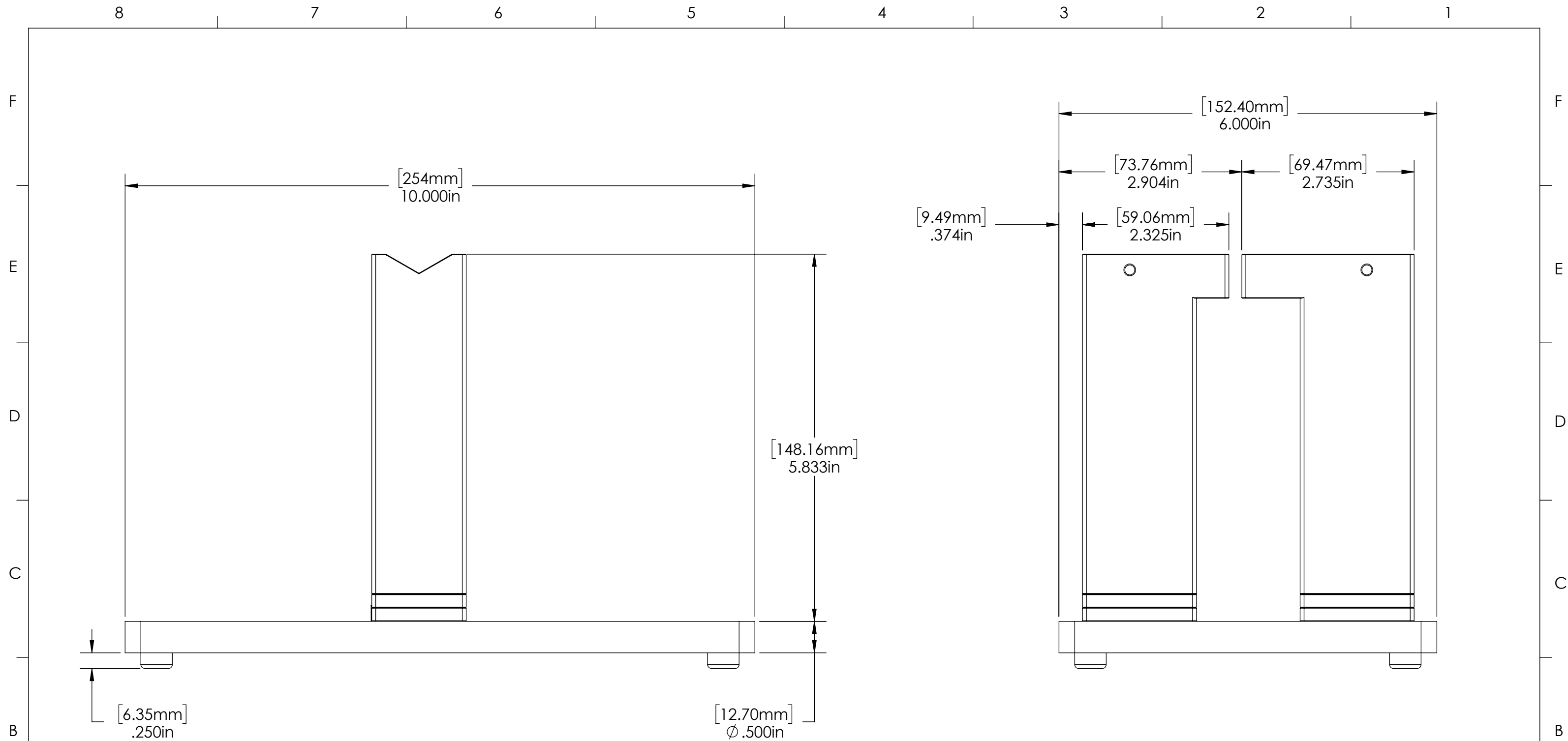
NAME	DATE
EMM	11/5/2020
DRAWN BY:	


63 RA SURFACE FINISH  
 ALL FEATURES MUST MEET SPECIFICATION AFTER PLATING BEFORE POWDER-COAT IF PLATED OR POWDER-COATED  
**SEE FINISH**

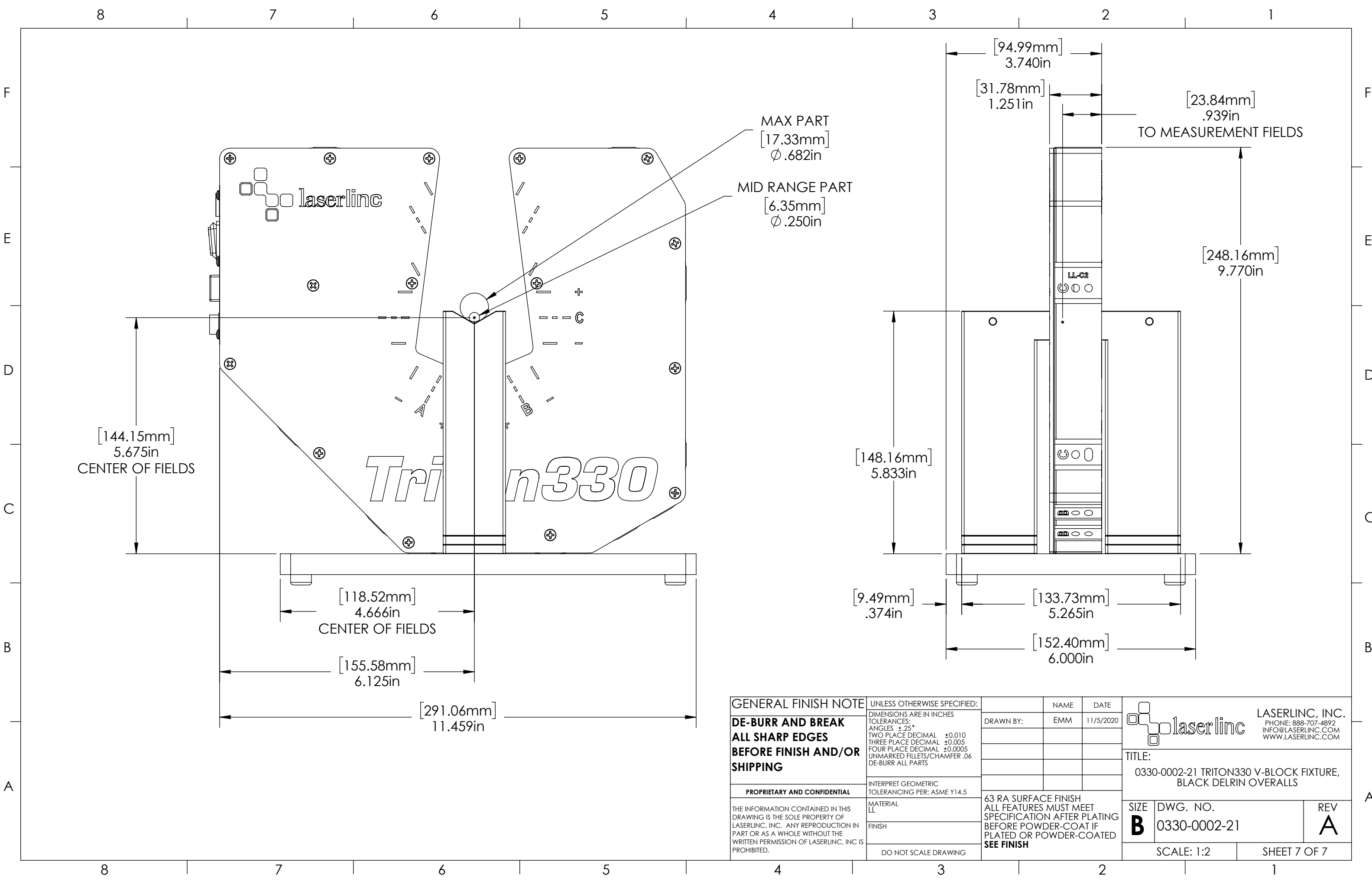
		<b>LASERLINC, INC.</b> PHONE: 888-707-4892 INFO@LASERLINC.COM WWW.LASERLINC.COM	
<b>TITLE:</b> 0330-0002-21 TRITON330 V-BLOCK FIXTURE, BLACK DELRIN OVERALLS			
<b>SIZE</b>	<b>DWG. NO.</b>	<b>REV</b>	
<b>B</b>	0330-0002-21	<b>A</b>	
SCALE: 2:3		SHEET 4 OF 7	



<b>GENERAL FINISH NOTE</b> <b>DE-BURR AND BREAK</b> <b>ALL SHARP EDGES</b> <b>BEFORE FINISH AND/OR SHIPPING</b>	UNLESS OTHERWISE SPECIFIED: DIMENSIONS ARE IN INCHES TOLERANCES: ANGLES ±.25° TWO PLACE DECIMAL ±0.010 THREE PLACE DECIMAL ±0.005 FOUR PLACE DECIMAL ±0.0005 UNMARKED FILLETS/CHAMFER .06 DE-BURR ALL PARTS	NAME	DATE	 <b>LASERLINC, INC.</b> PHONE: 888-707-4892 INFO@LASERLINC.COM WWW.LASERLINC.COM	
	<b>PROPRIETARY AND CONFIDENTIAL</b> THE INFORMATION CONTAINED IN THIS DRAWING IS THE SOLE PROPERTY OF LASERLINC, INC. ANY REPRODUCTION IN PART OR AS A WHOLE WITHOUT THE WRITTEN PERMISSION OF LASERLINC, INC. IS PROHIBITED.	INTERPRET GEOMETRIC TOLERANCING PER: ASME Y14.5 MATERIAL LL FINISH DO NOT SCALE DRAWING	DRAWN BY:		EMM
<b>63 RA SURFACE FINISH</b> ALL FEATURES MUST MEET SPECIFICATION AFTER PLATING BEFORE POWDER-COAT IF PLATED OR POWDER-COATED <b>SEE FINISH</b>			TITLE: 0330-0002-21 TRITON330 V-BLOCK FIXTURE, BLACK DELRIN OVERALLS		
SIZE <b>B</b>	DWG. NO. 0330-0002-21	REV <b>A</b>	SCALE: 1:2      SHEET 5 OF 7		



<b>GENERAL FINISH NOTE</b> <b>DE-BURR AND BREAK</b> <b>ALL SHARP EDGES</b> <b>BEFORE FINISH AND/OR SHIPPING</b>	UNLESS OTHERWISE SPECIFIED: DIMENSIONS ARE IN INCHES TOLERANCES: ANGLES $\pm .25^\circ$ TWO PLACE DECIMAL $\pm 0.010$ THREE PLACE DECIMAL $\pm 0.005$ FOUR PLACE DECIMAL $\pm 0.0005$ UNMARKED FILLETS/CHAMFER .06 DE-BURR ALL PARTS	NAME: EMM DATE: 11/5/2020	 <b>LASERLINC, INC.</b> PHONE: 888-707-4892 INFO@LASERLINC.COM WWW.LASERLINC.COM
	PROPRIETARY AND CONFIDENTIAL THE INFORMATION CONTAINED IN THIS DRAWING IS THE SOLE PROPERTY OF LASERLINC, INC. ANY REPRODUCTION IN PART OR AS A WHOLE WITHOUT THE WRITTEN PERMISSION OF LASERLINC, INC. IS PROHIBITED.	INTERPRET GEOMETRIC TOLERANCING PER: ASME Y14.5 MATERIAL: LL FINISH: DO NOT SCALE DRAWING	
63 RA SURFACE FINISH ALL FEATURES MUST MEET SPECIFICATION AFTER PLATING BEFORE POWDER-COAT IF PLATED OR POWDER-COATED <b>SEE FINISH</b>		SIZE: <b>B</b> DWG. NO.: 0330-0002-21 SCALE: 2:3	REV: <b>A</b> SHEET 6 OF 7



<b>GENERAL FINISH NOTE</b>		UNLESS OTHERWISE SPECIFIED:		NAME	DATE
<b>DE-BURR AND BREAK ALL SHARP EDGES BEFORE FINISH AND/OR SHIPPING</b>		DIMENSIONS ARE IN INCHES TOLERANCES: ANGLES $\pm$ .25 TWO PLACE DECIMAL $\pm$ 0.010 THREE PLACE DECIMAL $\pm$ 0.005 FOUR PLACE DECIMAL $\pm$ 0.0005 UNMARKED FILLETS/CHAMFER .06 DE-BURR ALL PARTS		DRAWN BY:	EMM 11/5/2020
<b>PROPRIETARY AND CONFIDENTIAL</b>		INTERPRET GEOMETRIC TOLERANCING PER: ASME Y14.5			
THE INFORMATION CONTAINED IN THIS DRAWING IS THE SOLE PROPERTY OF LASERLINC, INC. ANY REPRODUCTION IN PART OR AS A WHOLE WITHOUT THE WRITTEN PERMISSION OF LASERLINC, INC. IS PROHIBITED.		MATERIAL LL		63 RA SURFACE FINISH ALL FEATURES MUST MEET SPECIFICATION AFTER PLATING BEFORE POWDER-COAT IF PLATED OR POWDER-COATED <b>SEE FINISH</b>	
		DO NOT SCALE DRAWING		TITLE: 0330-0002-21 TRITON330 V-BLOCK FIXTURE, BLACK DELRIN OVERALLS	
SIZE <b>B</b>	DWG. NO. 0330-0002-21	REV <b>A</b>		SCALE: 1:2	
				SHEET 7 OF 7	


**LASERLINC, INC.**  
 PHONE: 888-707-4892  
 INFO@LASERLINC.COM  
 WWW.LASERLINC.COM