

8

7

6

5

4

3

2

1

REVISIONS				
ZONE	REV.	DESCRIPTION	DATE	APPROVED
	A	Check-In	6/13/2011	MAM

F

F

E

E

D

D

C

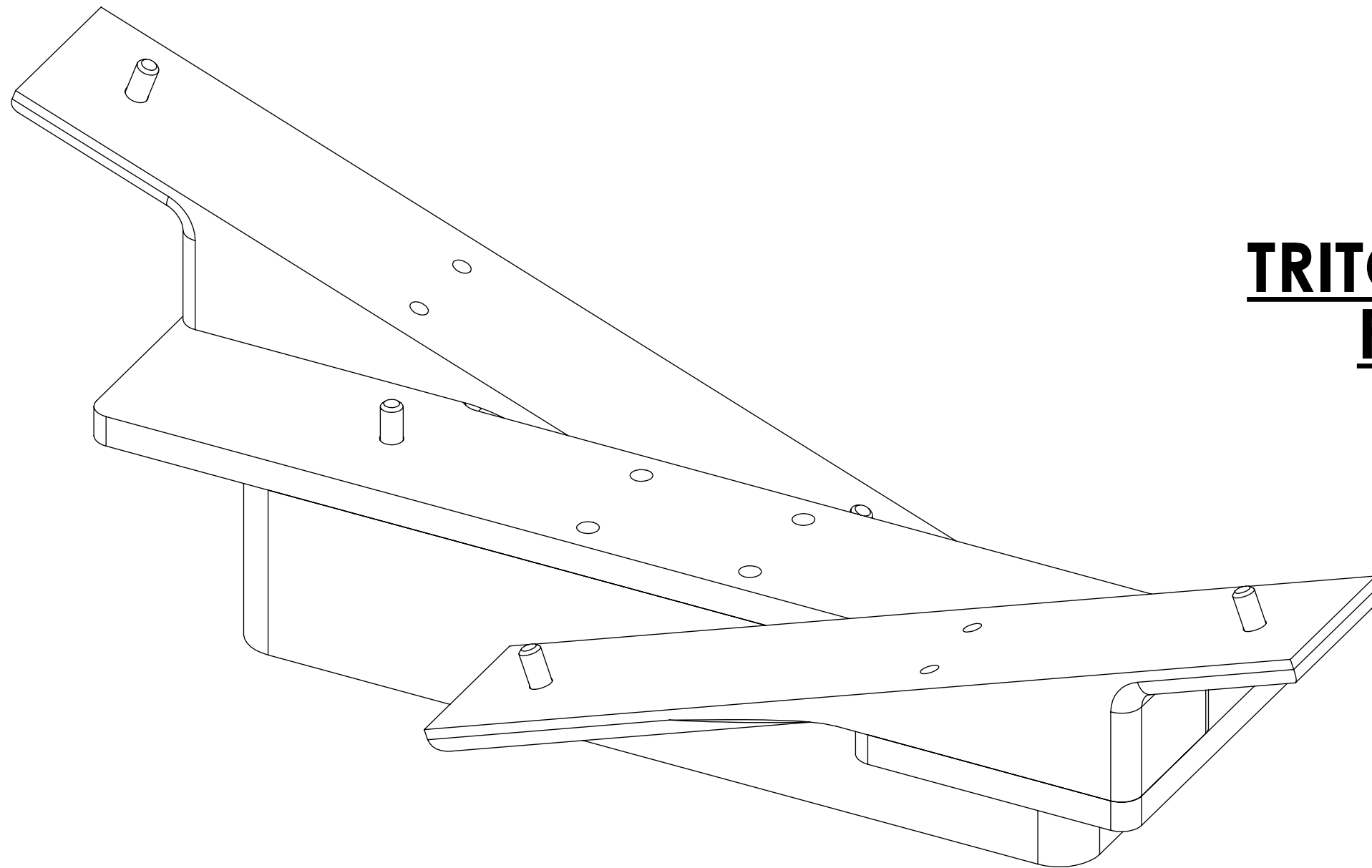
C

B

B

A


A



# TRITON360 TRIPLE MOUNT FIXTURE OVERALLS

## INDEX

- (1) COVER PAGE
- (2) DIMENSIONS

<b>GENERAL FINISH NOTE</b> <b>DE-BURR AND BREAK</b> <b>ALL SHARP EDGES</b> <b>BEFORE FINISH AND/OR SHIPPING</b>	UNLESS OTHERWISE SPECIFIED: DIMENSIONS ARE IN INCHES TOLERANCES: ANGLES ±.25° TWO PLACE DECIMAL ±0.010 THREE PLACE DECIMAL ±0.005 FOUR PLACE DECIMAL ±0.0005 UNMARKED FILLETS/CHAMFER .06 DE-BURR ALL PARTS	NAME EMM	DATE 12/14/2020	 <b>LASERLINC, INC.</b> PHONE: 888-707-4892 INFO@LASERLINC.COM WWW.LASERLINC.COM	
	<b>PROPRIETARY AND CONFIDENTIAL</b> THE INFORMATION CONTAINED IN THIS DRAWING IS THE SOLE PROPERTY OF LASERLINC, INC. ANY REPRODUCTION IN PART OR AS A WHOLE WITHOUT THE WRITTEN PERMISSION OF LASERLINC, INC. IS PROHIBITED.	INTERPRET GEOMETRIC TOLERANCING PER: ASME Y14.5 MATERIAL FINISH DO NOT SCALE DRAWING	DRAWN BY: EMM		TITLE: 0360-0000-29 TRITON360 TRIPLE MOUNT FIXTURE OVERALLS
63 RA SURFACE FINISH ALL FEATURES MUST MEET SPECIFICATION AFTER PLATING BEFORE POWDER-COAT IF PLATED OR POWDER-COATED <b>SEE FINISH</b>			SIZE <b>B</b>	DWG. NO. 0360-0000-29	REV <b>A</b>
			SCALE: 2:3	SHEET 1 OF 2	

8

7

6

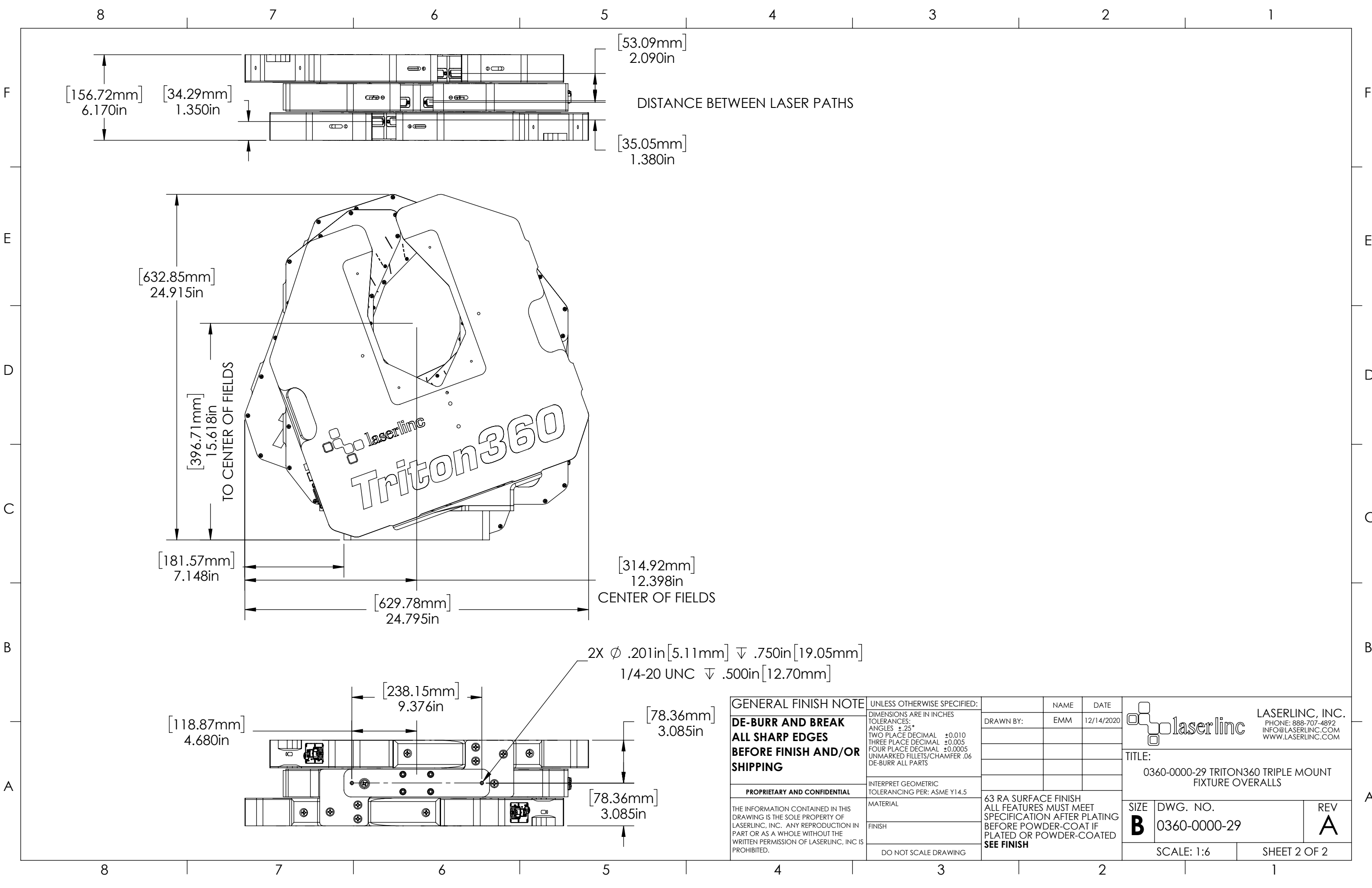
5

4

3

2

1



[156.72mm]  
6.170in

[34.29mm]  
1.350in

[53.09mm]  
2.090in

DISTANCE BETWEEN LASER PATHS

[35.05mm]  
1.380in

[632.85mm]  
24.915in

[396.71mm]  
15.618in  
TO CENTER OF FIELDS

laserline  
**Triton 360**

[181.57mm]  
7.148in

[314.92mm]  
12.398in  
CENTER OF FIELDS

[629.78mm]  
24.795in

2X  $\phi$  .201in [5.11mm]  $\nabla$  .750in [19.05mm]  
1/4-20 UNC  $\nabla$  .500in [12.70mm]

[118.87mm]  
4.680in

[238.15mm]  
9.376in

[78.36mm]  
3.085in

[78.36mm]  
3.085in

<b>GENERAL FINISH NOTE</b> <b>DE-BURR AND BREAK</b> <b>ALL SHARP EDGES</b> <b>BEFORE FINISH AND/OR SHIPPING</b>	UNLESS OTHERWISE SPECIFIED: DIMENSIONS ARE IN INCHES TOLERANCES: ANGLES $\pm$ .25 TWO PLACE DECIMAL $\pm$ 0.010 THREE PLACE DECIMAL $\pm$ 0.005 FOUR PLACE DECIMAL $\pm$ 0.0005 UNMARKED FILLETS/CHAMFER .06 DE-BURR ALL PARTS	NAME EMM	DATE 12/14/2020	 <b>LASERLINC, INC.</b> PHONE: 888-707-4892 INFO@LASERLINC.COM WWW.LASERLINC.COM
	PROPRIETARY AND CONFIDENTIAL THE INFORMATION CONTAINED IN THIS DRAWING IS THE SOLE PROPERTY OF LASERLINC, INC. ANY REPRODUCTION IN PART OR AS A WHOLE WITHOUT THE WRITTEN PERMISSION OF LASERLINC, INC IS PROHIBITED.	INTERPRET GEOMETRIC TOLERANCING PER: ASME Y14.5	DRAWN BY:	
	MATERIAL	63 RA SURFACE FINISH ALL FEATURES MUST MEET SPECIFICATION AFTER PLATING BEFORE POWDER-COAT IF PLATED OR POWDER-COATED <b>SEE FINISH</b>		SIZE <b>B</b>
	FINISH	DWG. NO. 0360-0000-29		REV <b>A</b>
	DO NOT SCALE DRAWING	SCALE: 1:6		SHEET 2 OF 2