

8 7 6 5 4 3 2 1

F

E

D

C

B

A

F

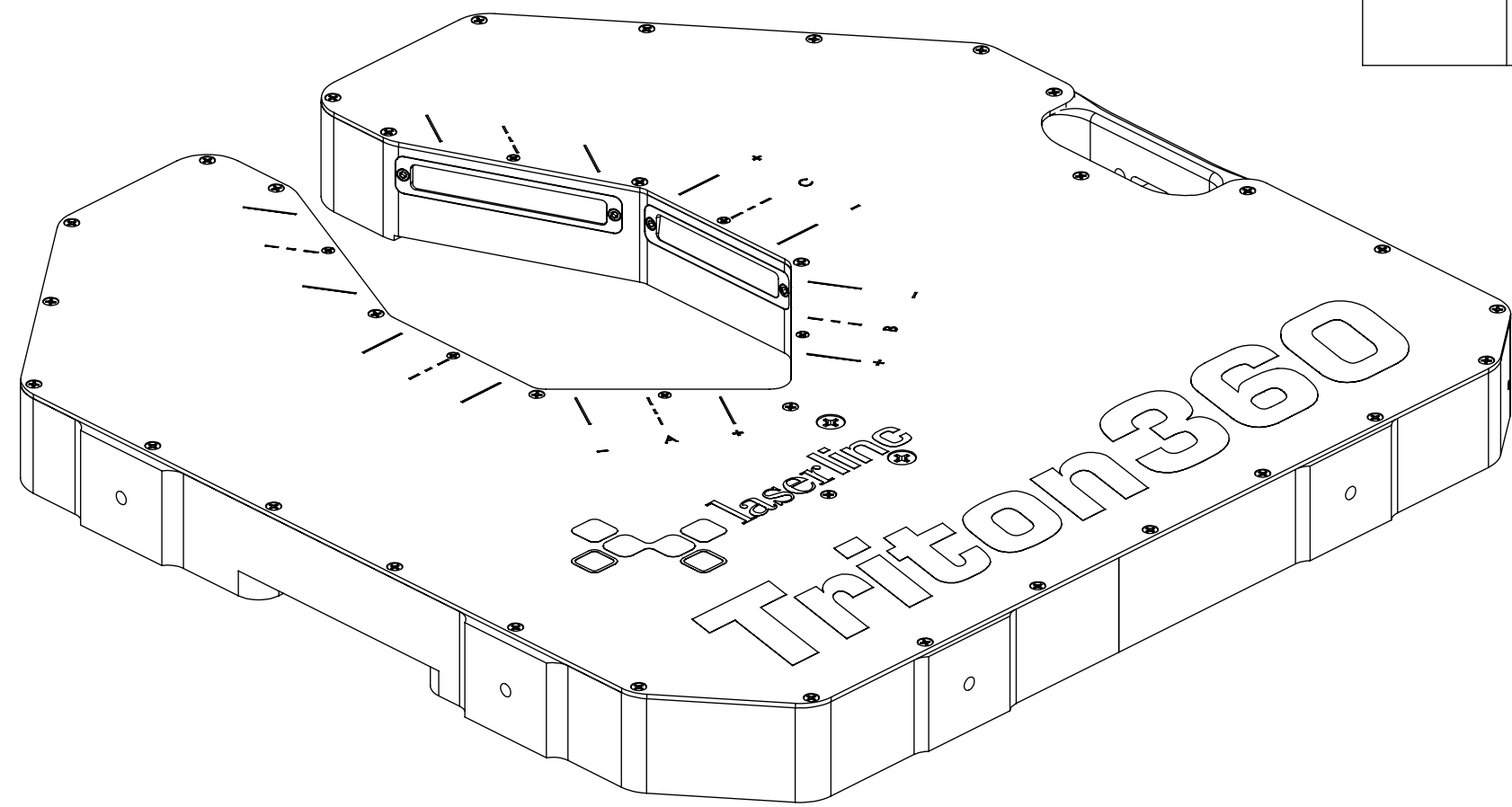
E

D

C

B

A



REVISIONS				
ZONE	REV.	DESCRIPTION	DATE	APPROVED
	A	CHECK-IN	10/29/2012	MAM


0360-0001-00 Triton360 Triple-Axis NetLinc Micrometer Overall Dimensions

NOTES:

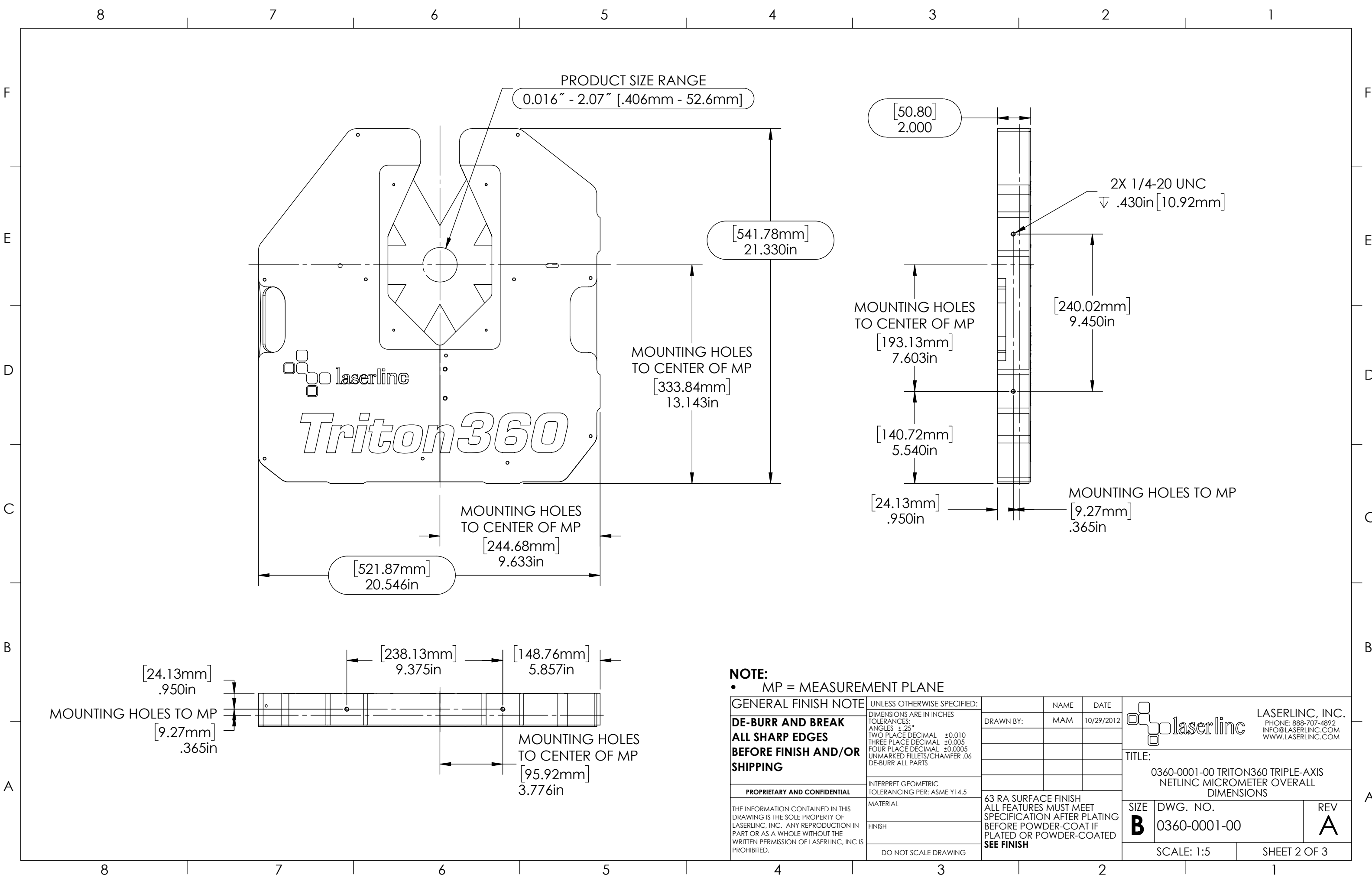
- APPROX. WEIGHT 41LBS [18.6KG]
- POWER REQUIREMENTS: 100-240 VAC 50/60 Hz 50 W MAX.
- MEASUREMENTS PER SECOND: 4800 [1600 PER AXIS] / 12,000 [4000 PER AXIS] (OPTIONAL)
- RESOLUTION: .000001" [.025µm]
- REPEATABILITY² UN-AVERAGED: ±.0012" [±30µm]
- REPEATABILITY² TWO SECOND: ±.00002" [±.5µm]

INDEX

- (1) COVER PAGE
- (2) DIMENSIONS 1
- (3) DIMENSIONS 2

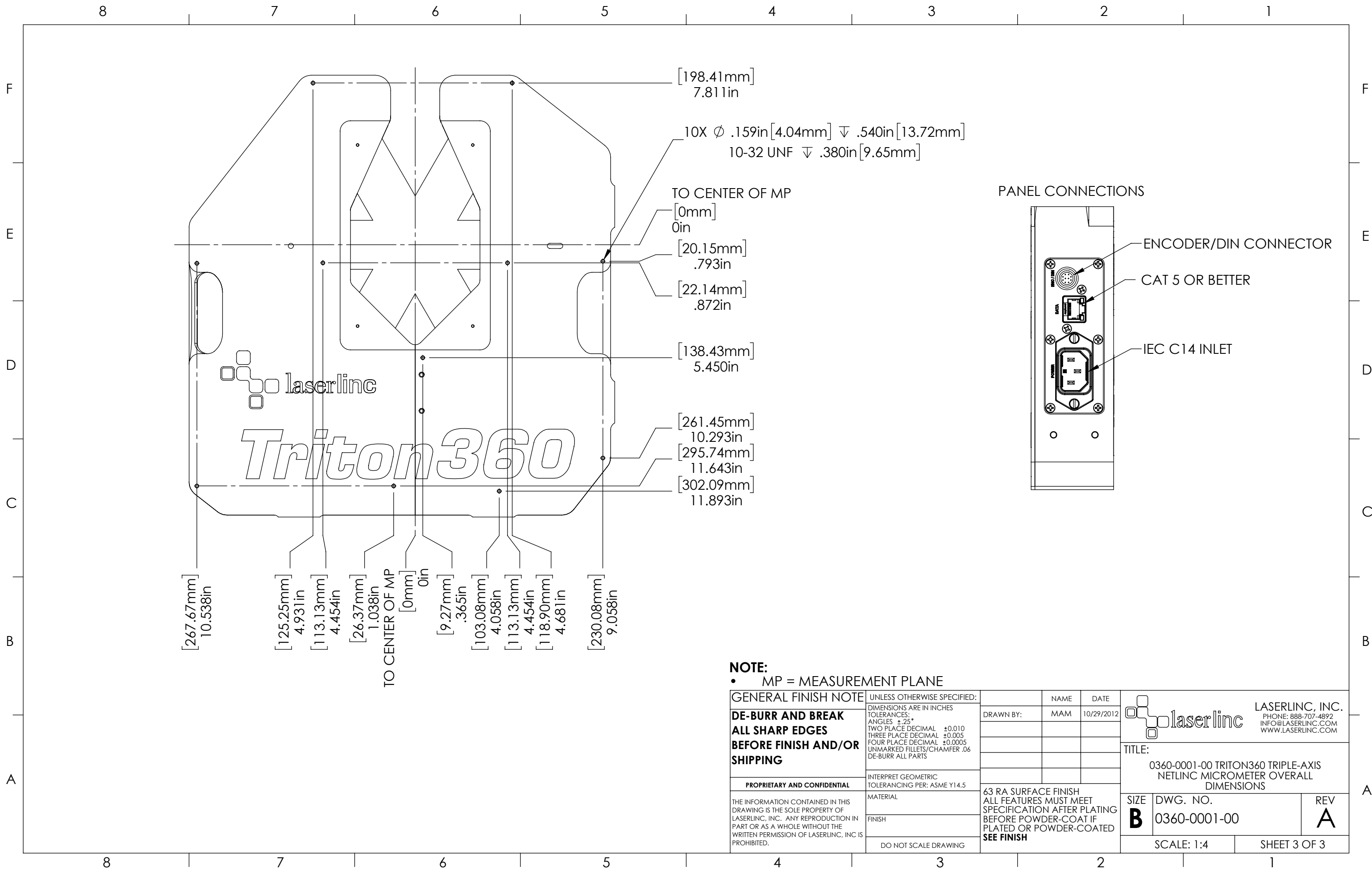
GENERAL FINISH NOTE		UNLESS OTHERWISE SPECIFIED:		NAME	DATE	 LASERLINC, INC. PHONE: 888-707-4892 INFO@LASERLINC.COM WWW.LASERLINC.COM
DE-BURR AND BREAK ALL SHARP EDGES BEFORE FINISH AND/OR SHIPPING		DIMENSIONS ARE IN INCHES TOLERANCES: ANGLES ±.25° TWO PLACE DECIMAL ±0.010 THREE PLACE DECIMAL ±0.005 FOUR PLACE DECIMAL ±0.0005 UNMARKED FILLETS/CHAMFER .06 DE-BURR ALL PARTS		DRAWN BY:	MAM	
PROPRIETARY AND CONFIDENTIAL		INTERPRET GEOMETRIC TOLERANCING PER: ASME Y14.5				TITLE:
THE INFORMATION CONTAINED IN THIS DRAWING IS THE SOLE PROPERTY OF LASERLINC, INC. ANY REPRODUCTION IN PART OR AS A WHOLE WITHOUT THE WRITTEN PERMISSION OF LASERLINC, INC. IS PROHIBITED.		MATERIAL		63 RA SURFACE FINISH		0360-0001-00 TRITON360 TRIPLE-AXIS NETLINC MICROMETER OVERALL DIMENSIONS
		FINISH		ALL FEATURES MUST MEET SPECIFICATION AFTER PLATING BEFORE POWDER-COAT IF PLATED OR POWDER-COATED SEE FINISH		
		DO NOT SCALE DRAWING				SIZE
						DWG. NO.
						REV
						B
						A
						SCALE: 1:3
						SHEET 1 OF 3

8 7 6 5 4 3 2 1



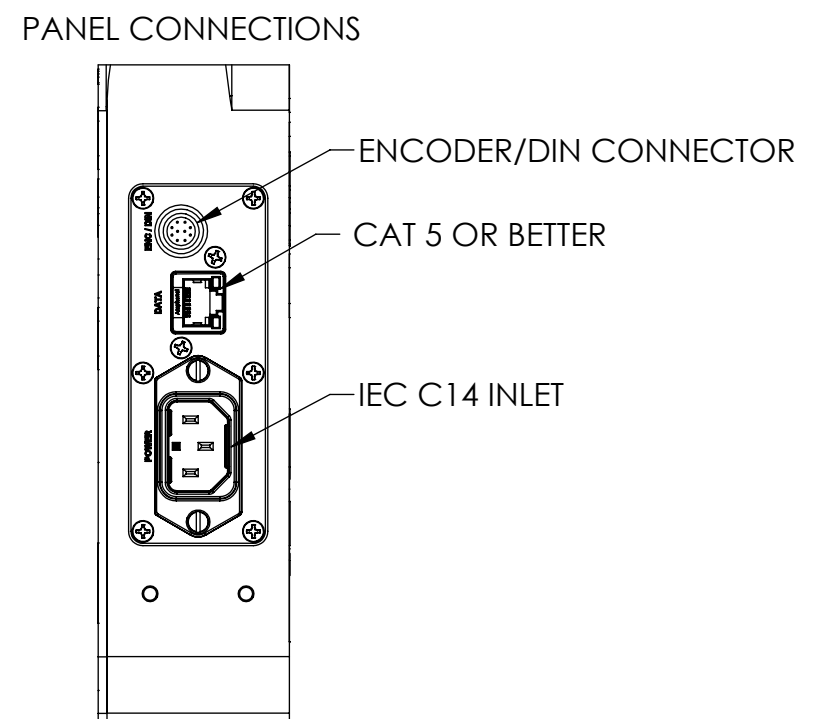
NOTE:
 • MP = MEASUREMENT PLANE

GENERAL FINISH NOTE DE-BURR AND BREAK ALL SHARP EDGES BEFORE FINISH AND/OR SHIPPING	UNLESS OTHERWISE SPECIFIED: DIMENSIONS ARE IN INCHES TOLERANCES: ANGLES ±.25 TWO PLACE DECIMAL ±0.010 THREE PLACE DECIMAL ±0.005 FOUR PLACE DECIMAL ±0.0005 UNMARKED FILLETS/CHAMFER .06 DE-BURR ALL PARTS	NAME MAM	DATE 10/29/2012		LASERLINC, INC. PHONE: 888-707-4892 INFO@LASERLINC.COM WWW.LASERLINC.COM
	INTERPRET GEOMETRIC TOLERANCING PER: ASME Y14.5	DRAWN BY:	TITLE: 0360-0001-00 TRITON360 TRIPLE-AXIS NETLINC MICROMETER OVERALL DIMENSIONS		
PROPRIETARY AND CONFIDENTIAL THE INFORMATION CONTAINED IN THIS DRAWING IS THE SOLE PROPERTY OF LASERLINC, INC. ANY REPRODUCTION IN PART OR AS A WHOLE WITHOUT THE WRITTEN PERMISSION OF LASERLINC, INC. IS PROHIBITED.	MATERIAL FINISH DO NOT SCALE DRAWING	63 RA SURFACE FINISH ALL FEATURES MUST MEET SPECIFICATION AFTER PLATING BEFORE POWDER-COAT IF PLATED OR POWDER-COATED SEE FINISH		SIZE B	DWG. NO. 0360-0001-00
		SCALE: 1:5	REV A	SHEET 2 OF 3	



[267.67mm] 10.538in
 [125.25mm] 4.931in
 [113.13mm] 4.454in
 [26.37mm] 1.038in
 TO CENTER OF MP
 [0mm] 0in
 [9.27mm] .365in
 [103.08mm] 4.058in
 [113.13mm] 4.454in
 [118.90mm] 4.681in
 [230.08mm] 9.058in

[198.41mm] 7.811in
 10X \varnothing .159in [4.04mm] ∇ .540in [13.72mm]
 10-32 UNF ∇ .380in [9.65mm]
 TO CENTER OF MP
 [0mm] 0in
 [20.15mm] .793in
 [22.14mm] .872in
 [138.43mm] 5.450in
 [261.45mm] 10.293in
 [295.74mm] 11.643in
 [302.09mm] 11.893in



NOTE:
 • MP = MEASUREMENT PLANE

GENERAL FINISH NOTE		UNLESS OTHERWISE SPECIFIED:		NAME	DATE
DE-BURR AND BREAK ALL SHARP EDGES BEFORE FINISH AND/OR SHIPPING		DIMENSIONS ARE IN INCHES TOLERANCES: ANGLES \pm .25° TWO PLACE DECIMAL \pm 0.010 THREE PLACE DECIMAL \pm 0.005 FOUR PLACE DECIMAL \pm 0.0005 UNMARKED FILLETS/CHAMFER .06 DE-BURR ALL PARTS		DRAWN BY:	MAM 10/29/2012
PROPRIETARY AND CONFIDENTIAL		INTERPRET GEOMETRIC TOLERANCING PER: ASME Y14.5			
THE INFORMATION CONTAINED IN THIS DRAWING IS THE SOLE PROPERTY OF LASERLINC, INC. ANY REPRODUCTION IN PART OR AS A WHOLE WITHOUT THE WRITTEN PERMISSION OF LASERLINC, INC. IS PROHIBITED.		MATERIAL		63 RA SURFACE FINISH ALL FEATURES MUST MEET SPECIFICATION AFTER PLATING BEFORE POWDER-COAT IF PLATED OR POWDER-COATED SEE FINISH	
		FINISH		TITLE: 0360-0001-00 TRITON360 TRIPLE-AXIS NETLINC MICROMETER OVERALL DIMENSIONS	
		DO NOT SCALE DRAWING		SIZE B	DWG. NO. 0360-0001-00
				REV A	
				SCALE: 1:4	SHEET 3 OF 3

laserline LASERLINC, INC.
 PHONE: 888-707-4892
 INFO@LASERLINC.COM
 WWW.LASERLINC.COM