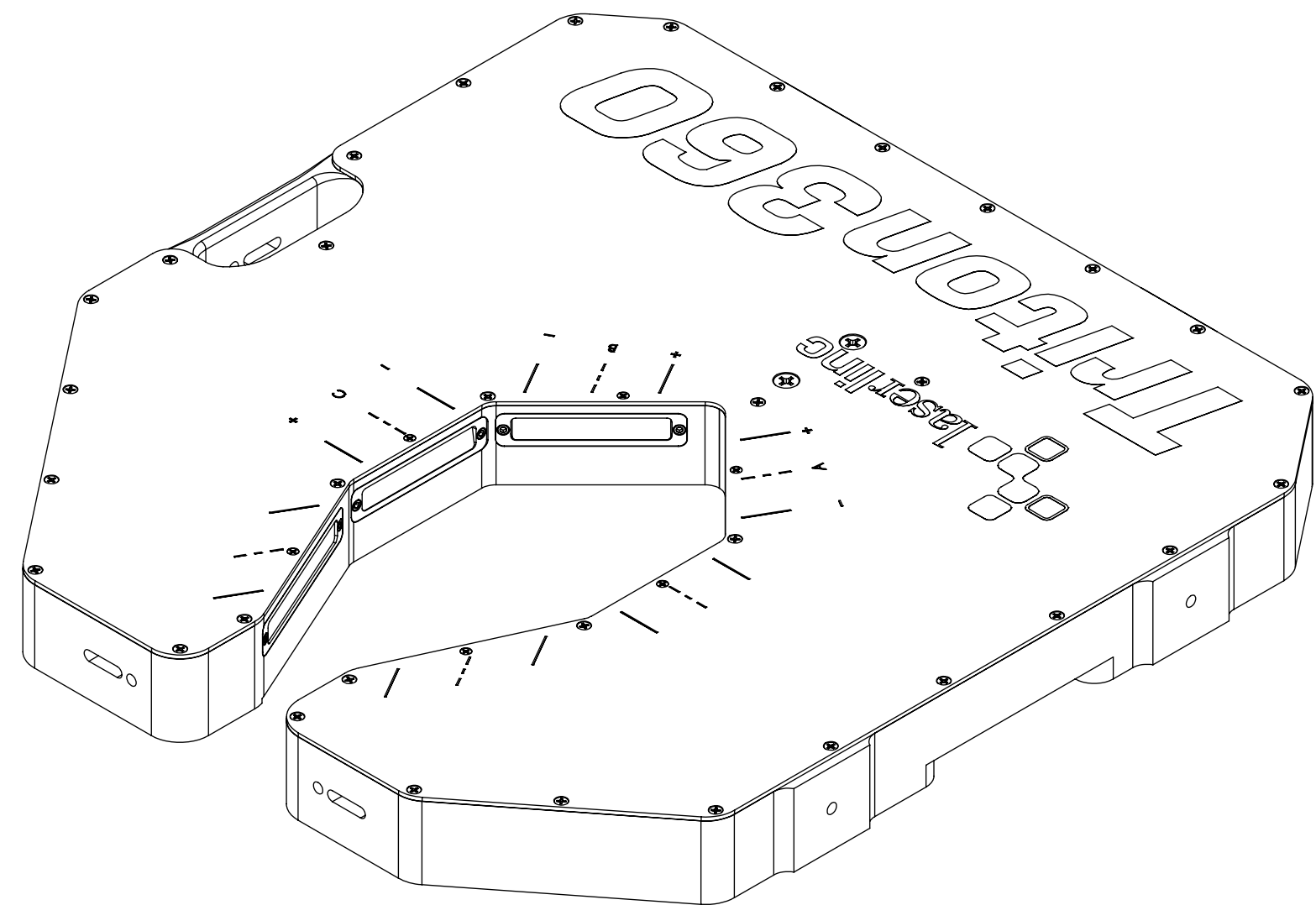


REVISIONS

ZONE	REV.	DESCRIPTION	DATE	APPROVED
	A	CHECK-IN	3/12/2024	CJM

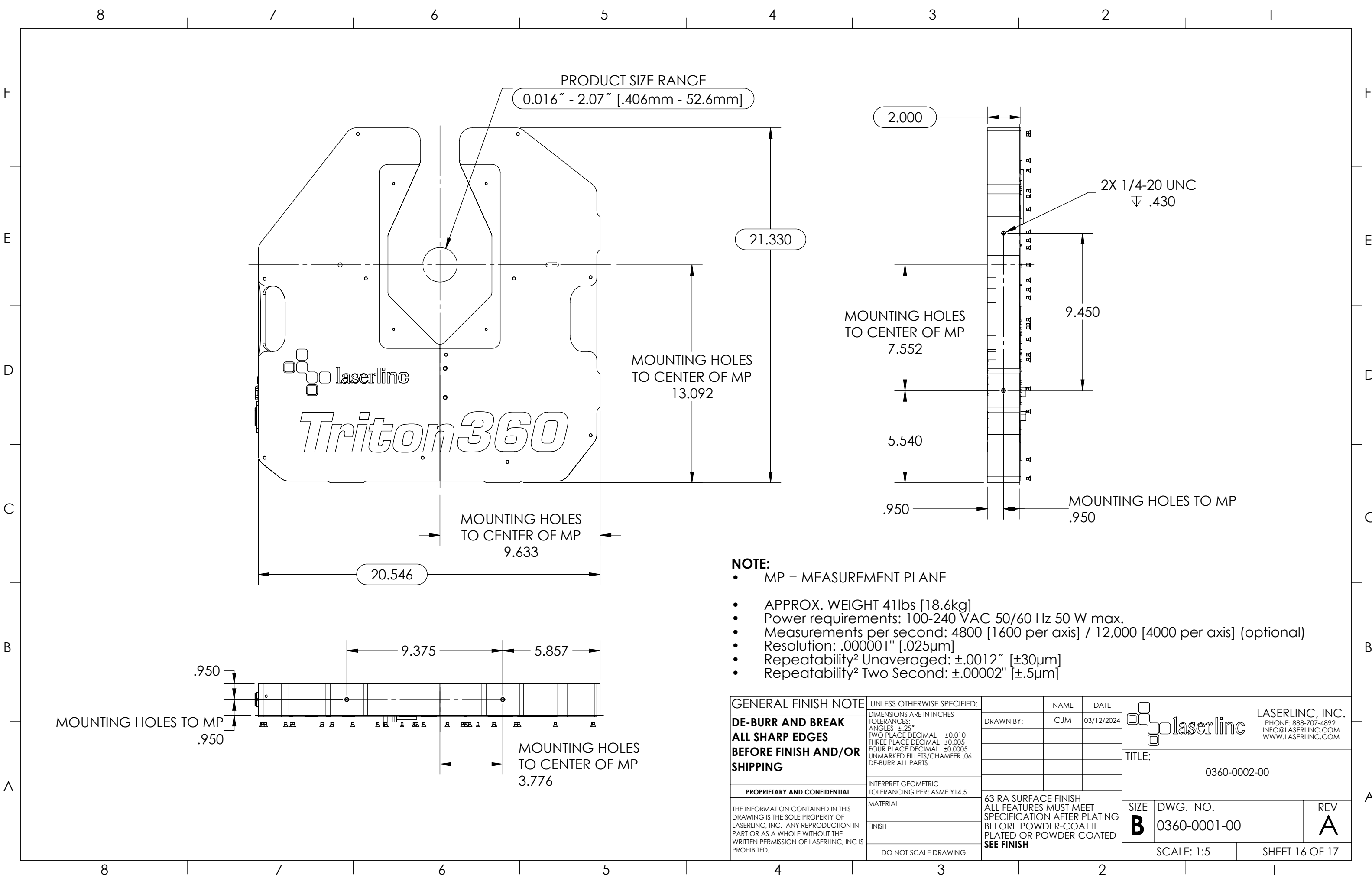


TRITON360 TRIPLE-AXIS POE MICROMETER

INDEX

- (1) COVER PAGE
- (2) BOM TABLE
- (3) WIRING INFORMATION & NOTES
- (4) PD & REST BOARDS
- (5) MOUNT ELECTRONICS 1
- (6) MOUNT ELECTRONICS 2
- (7) MOUNT LASERS
- (8) WIRE MANAGEMENT
- (9) MIRRORS AND ROCKERS
- (10) MIRROR & LENS 1
- (11) MIRROR & LENS 2
- (12) WINDOWS & FRAME
- (13) OVERVIEW
- (14) MOUNT COVER
- (15) OVERALLS 1
- (16) OVERALLS 2

GENERAL FINISH NOTE		UNLESS OTHERWISE SPECIFIED:		NAME	DATE
DE-BURR AND BREAK		DIMENSIONS ARE IN INCHES		DRAWN BY:	CJM
ALL SHARP EDGES		TOLERANCES:			03/12/2024
BEFORE FINISH AND/OR SHIPPING		ANGLES ±.25°			
PROPRIETARY AND CONFIDENTIAL		TWO PLACE DECIMAL ±0.010			
THE INFORMATION CONTAINED IN THIS DRAWING IS THE SOLE PROPERTY OF LASERLINC, INC. ANY REPRODUCTION IN PART OR AS A WHOLE WITHOUT THE WRITTEN PERMISSION OF LASERLINC, INC. IS PROHIBITED.		THREE PLACE DECIMAL ±0.005			
		FOUR PLACE DECIMAL ±0.0005			
		UNMARKED FILLETS/CHAMFER .06			
		DE-BURR ALL PARTS			
		INTERPRET GEOMETRIC TOLERANCING PER: ASME Y14.5			
		MATERIAL			
		FINISH			
		DO NOT SCALE DRAWING			
		63 RA SURFACE FINISH			
		ALL FEATURES MUST MEET SPECIFICATION AFTER PLATING BEFORE POWDER-COAT IF PLATED OR POWDER-COATED			
		SEE FINISH			
		LASERLINC, INC. PHONE: 937-318-2440 INFO@LASERLINC.COM WWW.LASERLINC.COM		TITLE: TRITON360 TRIPLE-AXIS POE MICROMETER	
SIZE	DWG. NO.	REV			
B	0360-0002-00	A			
SCALE: 1:3		SHEET 1 OF 17			

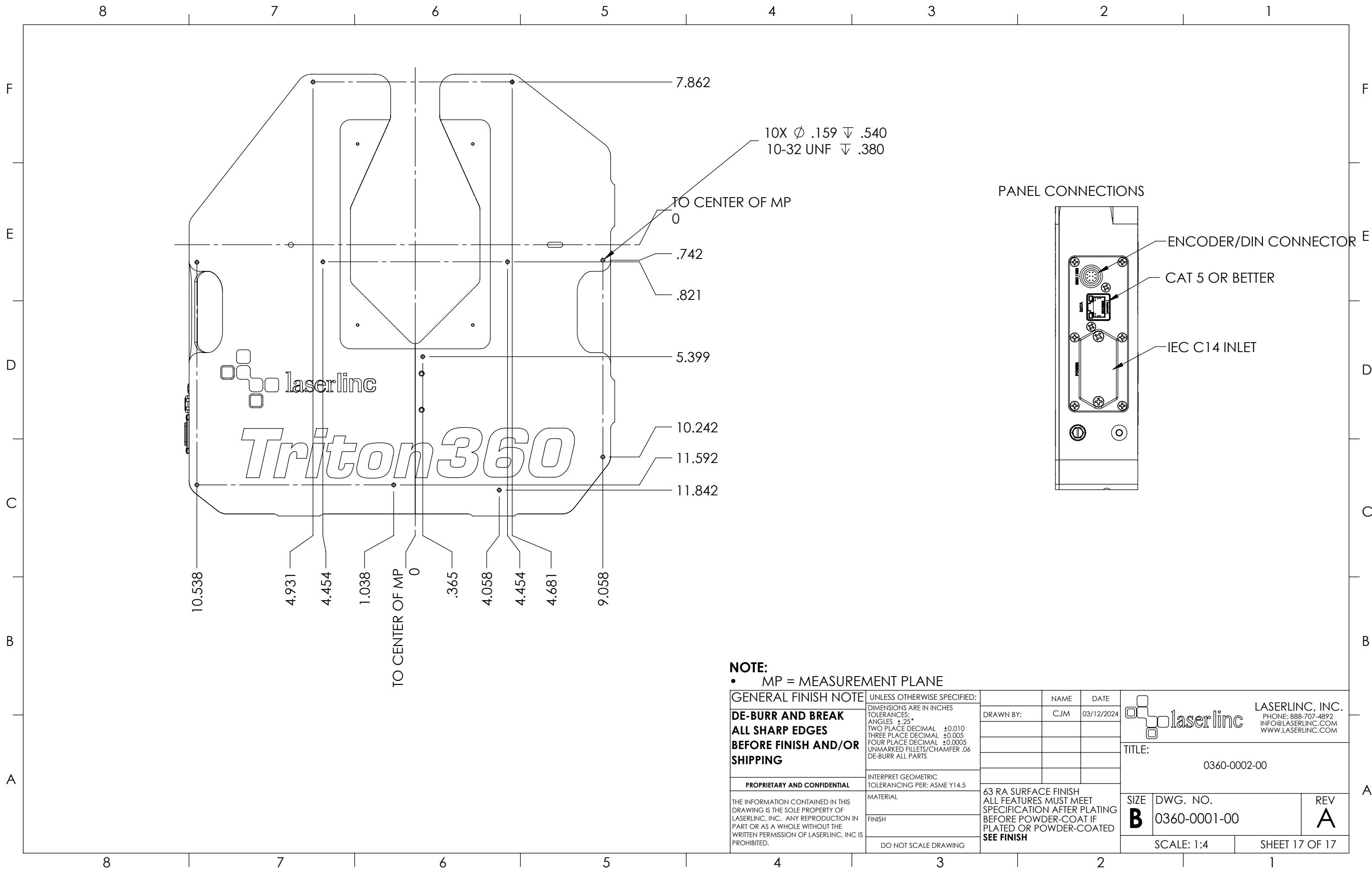


laserline
Triton 360


NOTE:

- MP = MEASUREMENT PLANE
- APPROX. WEIGHT 41lbs [18.6kg]
- Power requirements: 100-240 VAC 50/60 Hz 50 W max.
- Measurements per second: 4800 [1600 per axis] / 12,000 [4000 per axis] (optional)
- Resolution: .000001" [.025µm]
- Repeatability² Unaveraged: ±.0012" [±30µm]
- Repeatability² Two Second: ±.00002" [±.5µm]

GENERAL FINISH NOTE DE-BURR AND BREAK ALL SHARP EDGES BEFORE FINISH AND/OR SHIPPING	UNLESS OTHERWISE SPECIFIED: DIMENSIONS ARE IN INCHES TOLERANCES: ANGLES ±.25° TWO PLACE DECIMAL ±0.010 THREE PLACE DECIMAL ±0.005 FOUR PLACE DECIMAL ±0.0005 UNMARKED FILLETS/CHAMFER .06 DE-BURR ALL PARTS	NAME: CJM DATE: 03/12/2024	LASERLINC, INC. PHONE: 888-707-4892 INFO@LASERLINC.COM WWW.LASERLINC.COM
	PROPRIETARY AND CONFIDENTIAL THE INFORMATION CONTAINED IN THIS DRAWING IS THE SOLE PROPERTY OF LASERLINC, INC. ANY REPRODUCTION IN PART OR AS A WHOLE WITHOUT THE WRITTEN PERMISSION OF LASERLINC, INC. IS PROHIBITED.	INTERPRET GEOMETRIC TOLERANCING PER: ASME Y14.5 MATERIAL: FINISH: DO NOT SCALE DRAWING	
63 RA SURFACE FINISH ALL FEATURES MUST MEET SPECIFICATION AFTER PLATING BEFORE POWDER-COAT IF PLATED OR POWDER-COATED SEE FINISH		SIZE: B DWG. NO.: 0360-0001-00	REV: A SCALE: 1:5 SHEET 16 OF 17



NOTE:
 • MP = MEASUREMENT PLANE

GENERAL FINISH NOTE		UNLESS OTHERWISE SPECIFIED:		NAME	DATE
DE-BURR AND BREAK ALL SHARP EDGES BEFORE FINISH AND/OR SHIPPING		DIMENSIONS ARE IN INCHES TOLERANCES: ANGLES \pm .25 TWO PLACE DECIMAL \pm 0.010 THREE PLACE DECIMAL \pm 0.005 FOUR PLACE DECIMAL \pm 0.0005 UNMARKED FILLETS/CHAMFER .06 DE-BURR ALL PARTS		DRAWN BY:	CJM 03/12/2024
PROPRIETARY AND CONFIDENTIAL		INTERPRET GEOMETRIC TOLERANCING PER: ASME Y14.5		 LASERLINC, INC. PHONE: 888-707-4892 INFO@LASERLINC.COM WWW.LASERLINC.COM	
THE INFORMATION CONTAINED IN THIS DRAWING IS THE SOLE PROPERTY OF LASERLINC, INC. ANY REPRODUCTION IN PART OR AS A WHOLE WITHOUT THE WRITTEN PERMISSION OF LASERLINC, INC. IS PROHIBITED.		MATERIAL			
		FINISH		TITLE: 0360-0002-00	
		DO NOT SCALE DRAWING		63 RA SURFACE FINISH ALL FEATURES MUST MEET SPECIFICATION AFTER PLATING BEFORE POWDER-COAT IF PLATED OR POWDER-COATED SEE FINISH	
				SIZE B	DWG. NO. 0360-0001-00
				SCALE: 1:4	REV A
				SHEET 17 OF 17	