

8

7

6

5

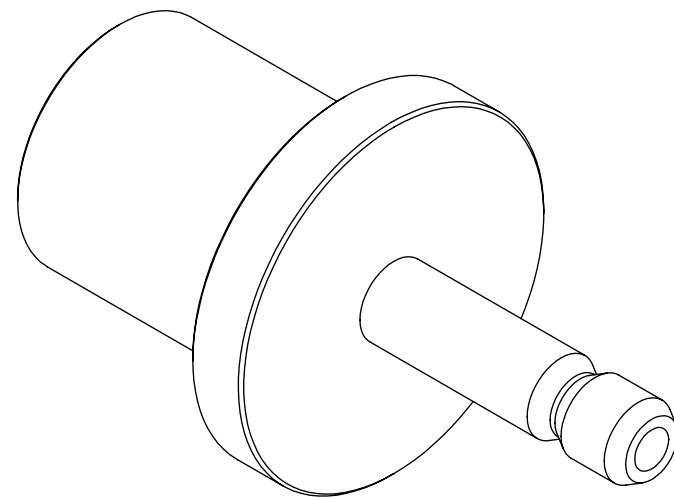
4

3

2

1


REVISIONS				
ZONE	REV.	DESCRIPTION	DATE	APPROVED
	A	CHECK IN	10/2/2020	JWB



BenchLinc-W Large Mandrel Assembly

INDEX

- (1) Cover Page
- (2) BOM View

GENERAL FINISH NOTE		UNLESS OTHERWISE SPECIFIED:		NAME	DATE	 LaserLinc, Inc. Phone: 888-707-4892 Info@laserlinc.com www.laserlinc.com
DE-BURR AND BREAK ALL SHARP EDGES BEFORE FINISH AND/OR SHIPPING		DIMENSIONS ARE IN INCHES TOLERANCES: ANGLES ±.25° TWO PLACE DECIMAL ±0.010 THREE PLACE DECIMAL ±0.005 FOUR PLACE DECIMAL ±0.0005 UNMARKED FILLETS/CHAMFER .06 DE-BURR ALL PARTS		DRAWN BY:	JWB	
PROPRIETARY AND CONFIDENTIAL		INTERPRET GEOMETRIC TOLERANCING PER: ASME Y14.5				
THE INFORMATION CONTAINED IN THIS DRAWING IS THE SOLE PROPERTY OF LASERLINC, INC. ANY REPRODUCTION IN PART OR AS A WHOLE WITHOUT THE WRITTEN PERMISSION OF LASERLINC, INC. IS PROHIBITED.		MATERIAL		63 RA SURFACE FINISH ALL FEATURES MUST MEET SPECIFICATION AFTER PLATING BEFORE POWDER-COAT IF PLATED OR POWDER-COATED SEE FINISH		TITLE: 6500-11XX-01 BenchLinc-W Large Mandrel Assembly
		FINISH		SIZE	DWG. NO.	REV
		DO NOT SCALE DRAWING		B	6500-11XX-01	A
				SCALE: 2:1		SHEET 1 OF 2

8

7

6

5

4

3

2

1

F

E

D

C

B

A

F

E

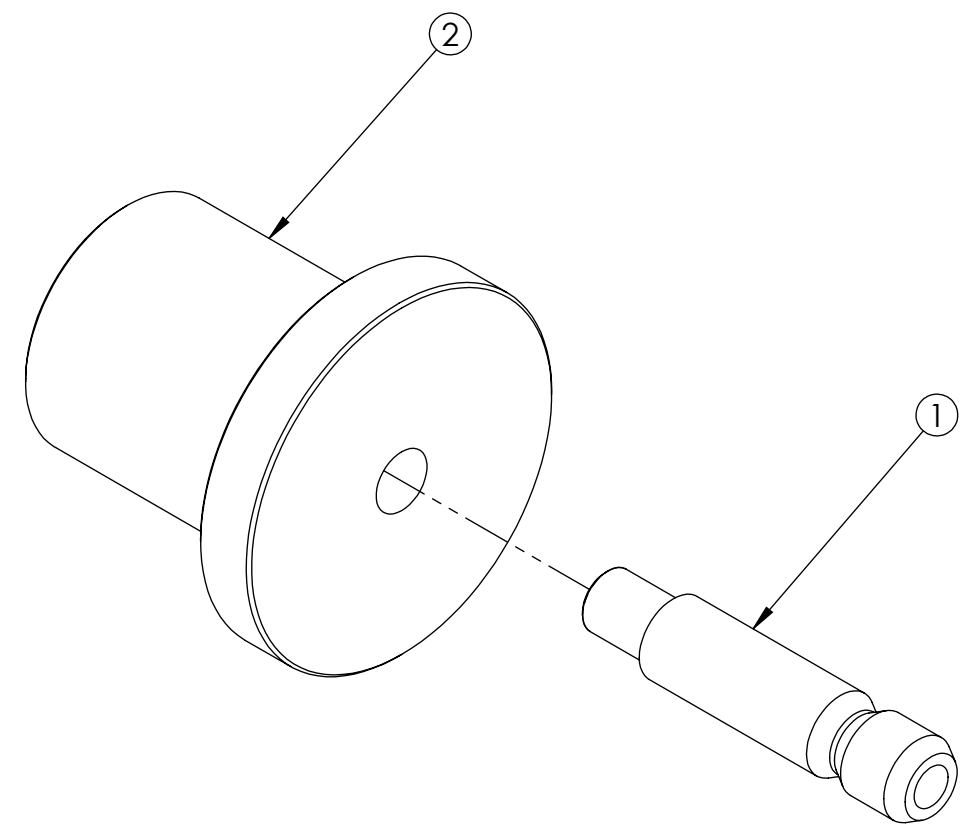
D

C

B


A

ITEM NO.	PART NUMBER	DESCRIPTION	Part Location	QTY.
1	6500-3247-05 BenchLinc-W Mandrel Stud	REV A		1
2	6500-32YY-05 BenchLinc-W Large Mandrel Body	REV A - Varies with P. O.		1



ASSEMBLY NOTES

1. PRESS MANDREL STUD ① INTO MANDREL BODY ②
IF LOOSE ATTACH WITH LOCTITE #? LOCKING COMPOUND

GENERAL FINISH NOTE		UNLESS OTHERWISE SPECIFIED:		NAME	DATE
DE-BURR AND BREAK ALL SHARP EDGES BEFORE FINISH AND/OR SHIPPING		DIMENSIONS ARE IN INCHES TOLERANCES: ANGLES ±.25° TWO PLACE DECIMAL ±0.010 THREE PLACE DECIMAL ±0.005 FOUR PLACE DECIMAL ±0.0005 UNMARKED FILLETS/CHAMFER .06 DE-BURR ALL PARTS		DRAWN BY:	JWB 10/2/2020
PROPRIETARY AND CONFIDENTIAL		INTERPRET GEOMETRIC TOLERANCING PER: ASME Y14.5			
THE INFORMATION CONTAINED IN THIS DRAWING IS THE SOLE PROPERTY OF LASERLINC, INC. ANY REPRODUCTION IN PART OR AS A WHOLE WITHOUT THE WRITTEN PERMISSION OF LASERLINC, INC. IS PROHIBITED.		MATERIAL		63 RA SURFACE FINISH ALL FEATURES MUST MEET SPECIFICATION AFTER PLATING BEFORE POWDER-COAT IF PLATED OR POWDER-COATED SEE FINISH	
		FINISH			
		DO NOT SCALE DRAWING			
			LaserLinc, Inc. Phone: 888-707-4892 Info@laserlinc.com www.laserlinc.com		
TITLE: 6500-11XX-01 BenchLinc-W Large Mandrel Assembly					
SIZE B	DWG. NO. 6500-11XX-01		REV A		
SCALE: 2:1			SHEET 2 OF 2		