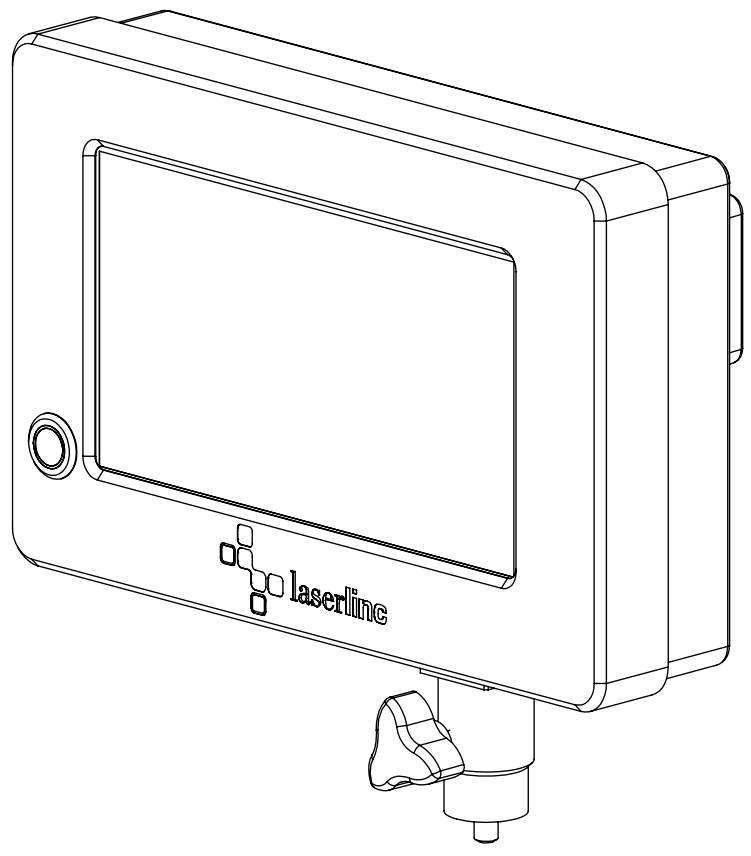


REVISIONS


ZONE	REV.	DESCRIPTION	DATE	APPROVED
	A	CHECK-IN	1/29/2021	EMM
	B	ADDED THE POST MOUNT AND MOUNTING HARDWARE	8/20/2021	MAM
	C	ADDED BATTERY, SD CARD, AND 4 PIN CONNECTER	5/17/2023	CJM
	D	CHANGED THE MOUNTING HARDWARE FOR THE RASBERRY PI	12/13/2023	MAM

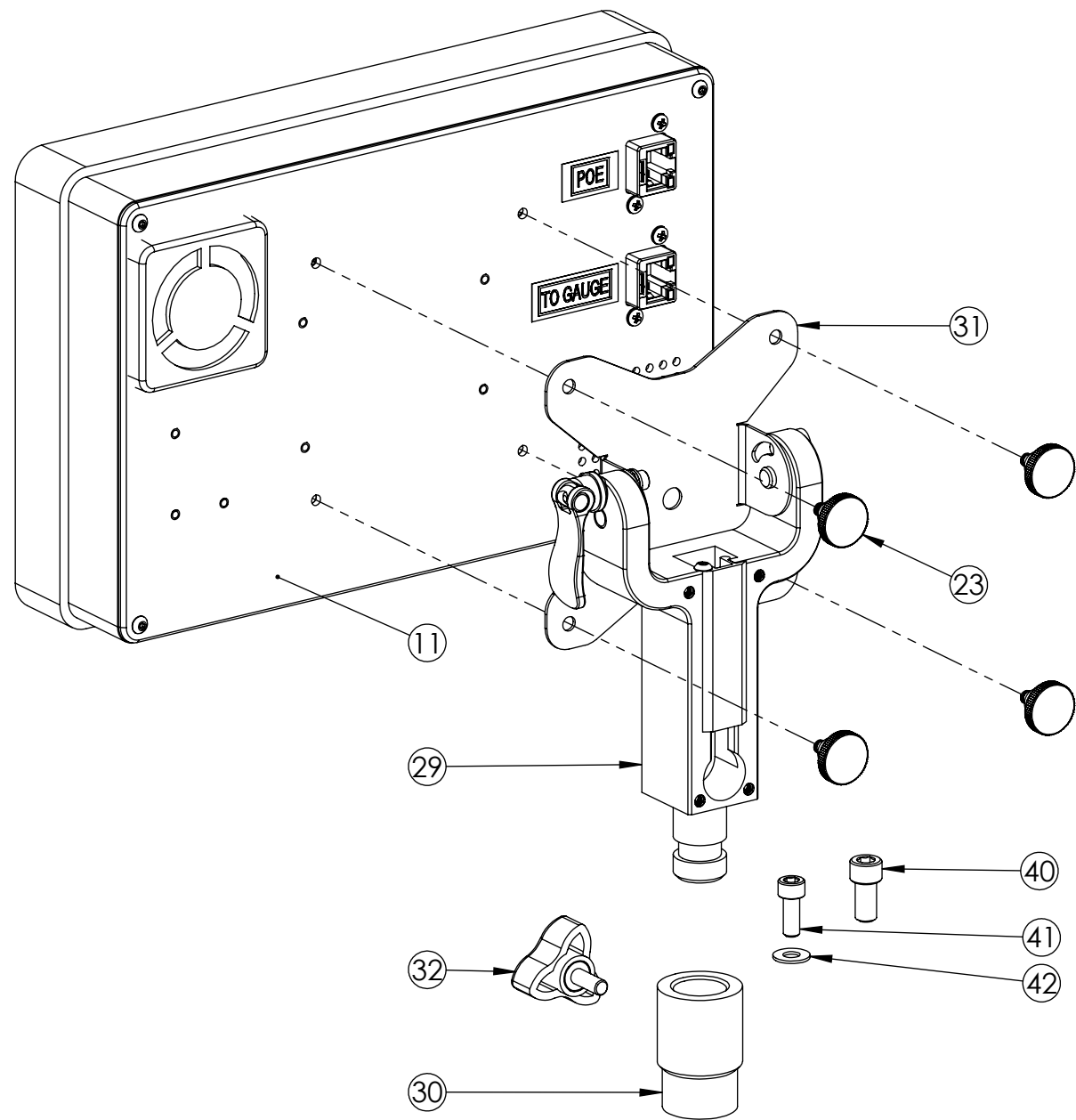


SMARTLINC DISPLAY

INDEX

- (1) COVER PAGE
- (2) BOM TABLE 1
- (3) BOM TABLE 2
- (4) MOUNT DISPLAY
- (5) ASSEMBLE BACK PANEL
- (6) MOUNT BACK COVER
- (7) VESA POST
- (8) ATTACH VESA MOUNT
- (9) OVERALLS

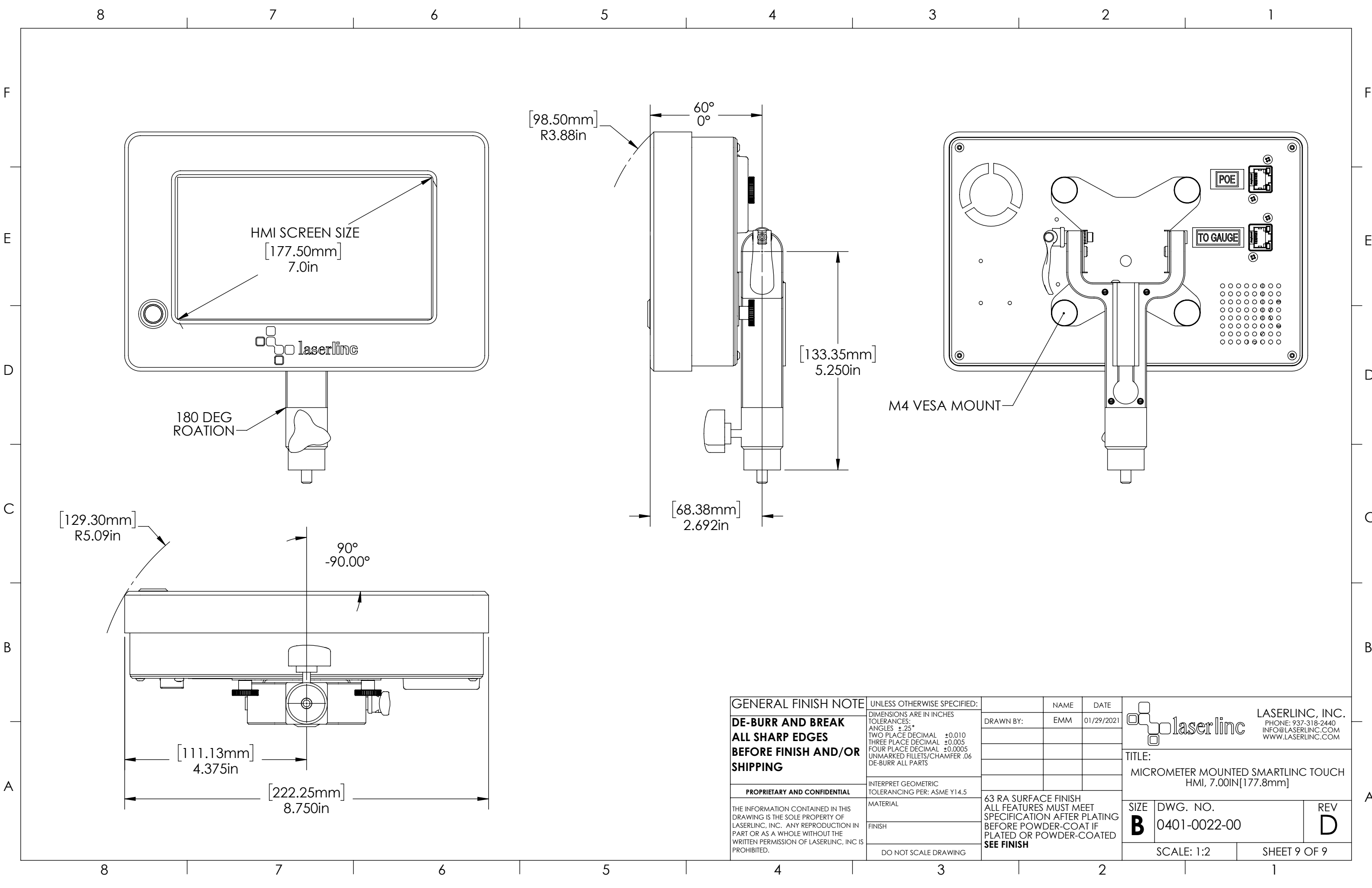
GENERAL FINISH NOTE		UNLESS OTHERWISE SPECIFIED:		NAME	DATE	 LASERLINC, INC. PHONE: 937-318-2440 INFO@LASERLINC.COM WWW.LASERLINC.COM
DE-BURR AND BREAK ALL SHARP EDGES BEFORE FINISH AND/OR SHIPPING		DIMENSIONS ARE IN INCHES TOLERANCES: ANGLES ±.25° TWO PLACE DECIMAL ±0.010 THREE PLACE DECIMAL ±0.005 FOUR PLACE DECIMAL ±0.0005 UNMARKED FILLETS/CHAMFER .06 DE-BURR ALL PARTS		DRAWN BY:	EMM	
PROPRIETARY AND CONFIDENTIAL		INTERPRET GEOMETRIC TOLERANCING PER: ASME Y14.5				
THE INFORMATION CONTAINED IN THIS DRAWING IS THE SOLE PROPERTY OF LASERLINC, INC. ANY REPRODUCTION IN PART OR AS A WHOLE WITHOUT THE WRITTEN PERMISSION OF LASERLINC, INC. IS PROHIBITED.		MATERIAL		63 RA SURFACE FINISH ALL FEATURES MUST MEET SPECIFICATION AFTER PLATING BEFORE POWDER-COAT IF PLATED OR POWDER-COATED SEE FINISH		TITLE: MICROMETER MOUNTED SMARTLINC TOUCH HMI, 7.00IN[177.8mm]
		FINISH		SIZE B DWG. NO. 0401-0022-00		REV D
		DO NOT SCALE DRAWING		SCALE: 1:2		SHEET 1 OF 9



ASSEMBLY NOTES:

1. ATTACH VESA MOUNTING PLATE (31) TO THE BASE PLATE (11) WITH THUMB KNOB (23).
2. MOUNT THE POST BASE TO THE MICROMETER USING EITHER 1/4-20 SCREW (40) OR 10-32 SCREW (41) & #10 WASHER (42).
 - USE THE 1/4-20 SCREW (40), IF MOUNTING TO AN AXION230 / AXION260 / AXION2120 / TRITON331 / TRITON360
 - USE THE 10-32 SCREW (41) & #10 WASHER (42), IF MOUNTING TO AN AXION222 / TRITON312 / TRITON330.

GENERAL FINISH NOTE DE-BURR AND BREAK ALL SHARP EDGES BEFORE FINISH AND/OR SHIPPING	UNLESS OTHERWISE SPECIFIED: DIMENSIONS ARE IN INCHES TOLERANCES: ANGLES ±.25 TWO PLACE DECIMAL ±0.010 THREE PLACE DECIMAL ±0.005 FOUR PLACE DECIMAL ±0.0005 UNMARKED FILLETS/CHAMFER .06 DE-BURR ALL PARTS	NAME DATE	LASERLINC, INC. PHONE: 937-318-2440 INFO@LASERLINC.COM WWW.LASERLINC.COM
	PROPRIETARY AND CONFIDENTIAL THE INFORMATION CONTAINED IN THIS DRAWING IS THE SOLE PROPERTY OF LASERLINC, INC. ANY REPRODUCTION IN PART OR AS A WHOLE WITHOUT THE WRITTEN PERMISSION OF LASERLINC, INC. IS PROHIBITED.	INTERPRET GEOMETRIC TOLERANCING PER: ASME Y14.5 MATERIAL FINISH DO NOT SCALE DRAWING	
		TITLE: MICROMETER MOUNTED SMARTLINC TOUCH HMI, 7.00IN[177.8mm]	
		SIZE B	DWG. NO. 0401-0022-00
		REV D	
		SCALE: 1:2	SHEET 8 OF 9



HMI SCREEN SIZE
[177.50mm]
7.0in

180 DEG
ROATION

[129.30mm]
R5.09in

90°
-90.00°

[111.13mm]
4.375in

[222.25mm]
8.750in

[98.50mm]
R3.88in

60°
0°

[133.35mm]
5.250in

[68.38mm]
2.692in

M4 VESA MOUNT

GENERAL FINISH NOTE DE-BURR AND BREAK ALL SHARP EDGES BEFORE FINISH AND/OR SHIPPING	UNLESS OTHERWISE SPECIFIED: DIMENSIONS ARE IN INCHES TOLERANCES: ANGLES ±.25° TWO PLACE DECIMAL ±0.010 THREE PLACE DECIMAL ±0.005 FOUR PLACE DECIMAL ±0.0005 UNMARKED FILLETS/CHAMFER .06 DE-BURR ALL PARTS	NAME EMM	DATE 01/29/2021		LASERLINC, INC. PHONE: 937-318-2440 INFO@LASERLINC.COM WWW.LASERLINC.COM
	PROPRIETARY AND CONFIDENTIAL THE INFORMATION CONTAINED IN THIS DRAWING IS THE SOLE PROPERTY OF LASERLINC, INC. ANY REPRODUCTION IN PART OR AS A WHOLE WITHOUT THE WRITTEN PERMISSION OF LASERLINC, INC. IS PROHIBITED.	INTERPRET GEOMETRIC TOLERANCING PER: ASME Y14.5	DRAWN BY:		
MATERIAL FINISH DO NOT SCALE DRAWING	63 RA SURFACE FINISH ALL FEATURES MUST MEET SPECIFICATION AFTER PLATING BEFORE POWDER-COAT IF PLATED OR POWDER-COATED SEE FINISH	SIZE B	DWG. NO. 0401-0022-00	REV D	SCALE: 1:2 SHEET 9 OF 9