

8

7

6

5

4

3

2

1

F

E

D

C

B

A

F

E

D

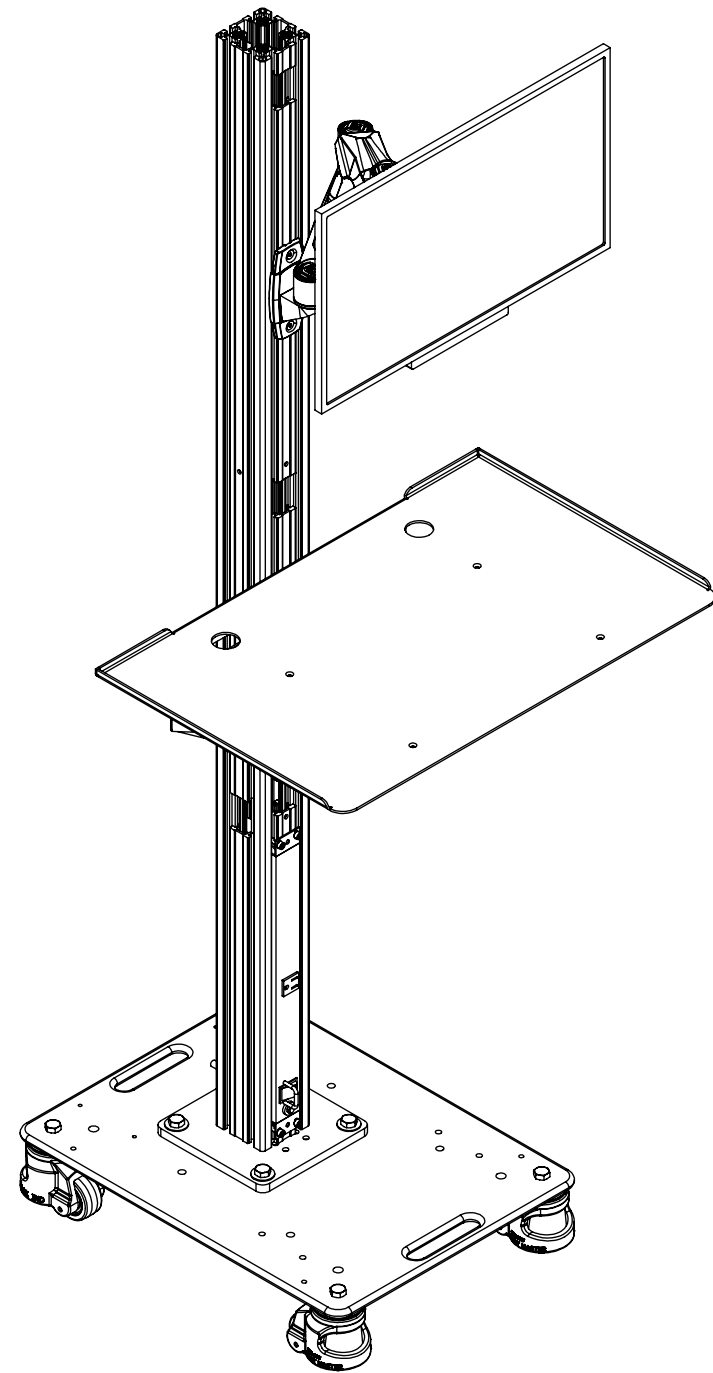
C

B

A

REVISIONS


ZONE	REV.	DESCRIPTION	DATE	APPROVED
	A	ADDED MOBILE BASE ASSEMBLY AND COMPUTER MOUNTING	9/5/2012	DRP
	B	ADDED MOUNTING PLATE AND HARDWARE	12/8/2022	EMM
	C	CHANGED MONITOR MOUNTING	3/7/2023	EMM



SINGLE MONITOR MOBILE INSPECTION CENTER

INDEX

- (1) COVER PAGE
- (2) BOM TABLE
- (3) MOUNT BASE
- (4) VESA MOUNT
- (5) MOUNTING TRAY
- (6) OVERALLS

GENERAL FINISH NOTE		UNLESS OTHERWISE SPECIFIED:		NAME	DATE	 LASERLINC, INC. PHONE: 888-707-4892 INFO@LASERLINC.COM WWW.LASERLINC.COM		
DE-BURR AND BREAK ALL SHARP EDGES BEFORE FINISH AND/OR SHIPPING		DIMENSIONS ARE IN INCHES TOLERANCES: ANGLES ±.25° TWO PLACE DECIMAL ±0.010 THREE PLACE DECIMAL ±0.005 FOUR PLACE DECIMAL ±0.0005 UNMARKED FILLETS/CHAMFER .06 DE-BURR ALL PARTS		DRAWN BY:	EMM		08/30/2021	
PROPRIETARY AND CONFIDENTIAL		INTERPRET GEOMETRIC TOLERANCING PER: ASME Y14.5				TITLE: SINGLE MONITOR MOBILE INSPECTION CENTER		
THE INFORMATION CONTAINED IN THIS DRAWING IS THE SOLE PROPERTY OF LASERLINC, INC. ANY REPRODUCTION IN PART OR AS A WHOLE WITHOUT THE WRITTEN PERMISSION OF LASERLINC, INC. IS PROHIBITED.		MATERIAL		63 RA SURFACE FINISH ALL FEATURES MUST MEET SPECIFICATION AFTER PLATING BEFORE POWDER-COAT IF PLATED OR POWDER-COATED SEE FINISH		SIZE B	DWG. NO. 9600-0002-00	REV C
		DO NOT SCALE DRAWING		SCALE: 1:10		SHEET 1 OF 6		

8

7

6

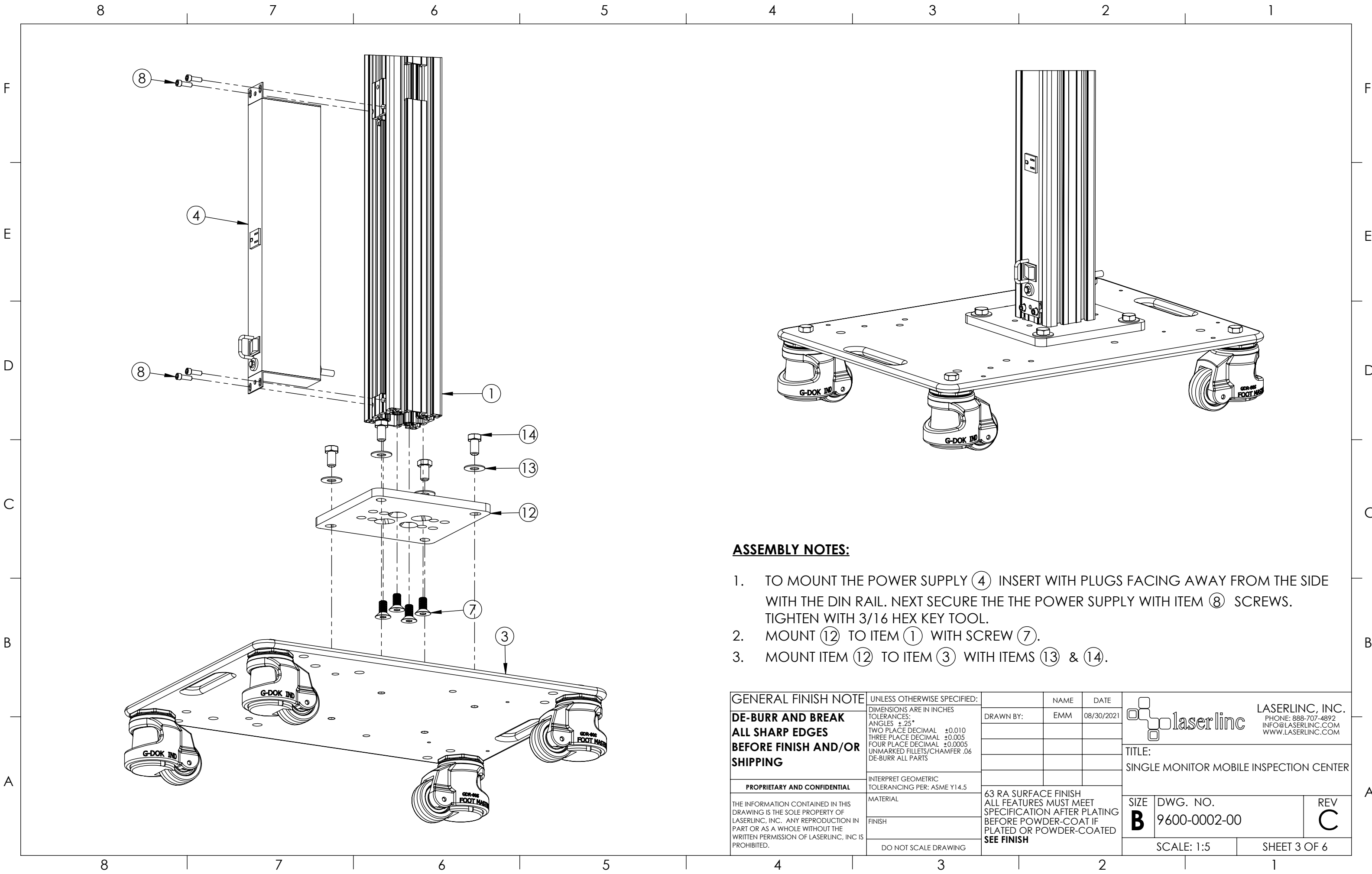
5

4

3


2

1



ASSEMBLY NOTES:

1. TO MOUNT THE POWER SUPPLY (4) INSERT WITH PLUGS FACING AWAY FROM THE SIDE WITH THE DIN RAIL. NEXT SECURE THE THE POWER SUPPLY WITH ITEM (8) SCREWS. TIGHTEN WITH 3/16 HEX KEY TOOL.
2. MOUNT (12) TO ITEM (1) WITH SCREW (7).
3. MOUNT ITEM (12) TO ITEM (3) WITH ITEMS (13) & (14).

GENERAL FINISH NOTE	UNLESS OTHERWISE SPECIFIED:	NAME	DATE	 LASERLINC, INC. PHONE: 888-707-4892 INFO@LASERLINC.COM WWW.LASERLINC.COM
	DE-BURR AND BREAK ALL SHARP EDGES BEFORE FINISH AND/OR SHIPPING	DIMENSIONS ARE IN INCHES TOLERANCES: ANGLES ±.25° TWO PLACE DECIMAL ±0.010 THREE PLACE DECIMAL ±0.005 FOUR PLACE DECIMAL ±0.0005 UNMARKED FILLETS/CHAMFER .06 DE-BURR ALL PARTS	DRAWN BY:	
PROPRIETARY AND CONFIDENTIAL	INTERPRET GEOMETRIC TOLERANCING PER: ASME Y14.5	TITLE: SINGLE MONITOR MOBILE INSPECTION CENTER		
THE INFORMATION CONTAINED IN THIS DRAWING IS THE SOLE PROPERTY OF LASERLINC, INC. ANY REPRODUCTION IN PART OR AS A WHOLE WITHOUT THE WRITTEN PERMISSION OF LASERLINC, INC. IS PROHIBITED.	MATERIAL	63 RA SURFACE FINISH ALL FEATURES MUST MEET SPECIFICATION AFTER PLATING BEFORE POWDER-COAT IF PLATED OR POWDER-COATED SEE FINISH		
	FINISH	SIZE	DWG. NO.	REV
	DO NOT SCALE DRAWING	B	9600-0002-00	C
		SCALE: 1:5		SHEET 3 OF 6

8 7 6 5 4 3 2 1

F

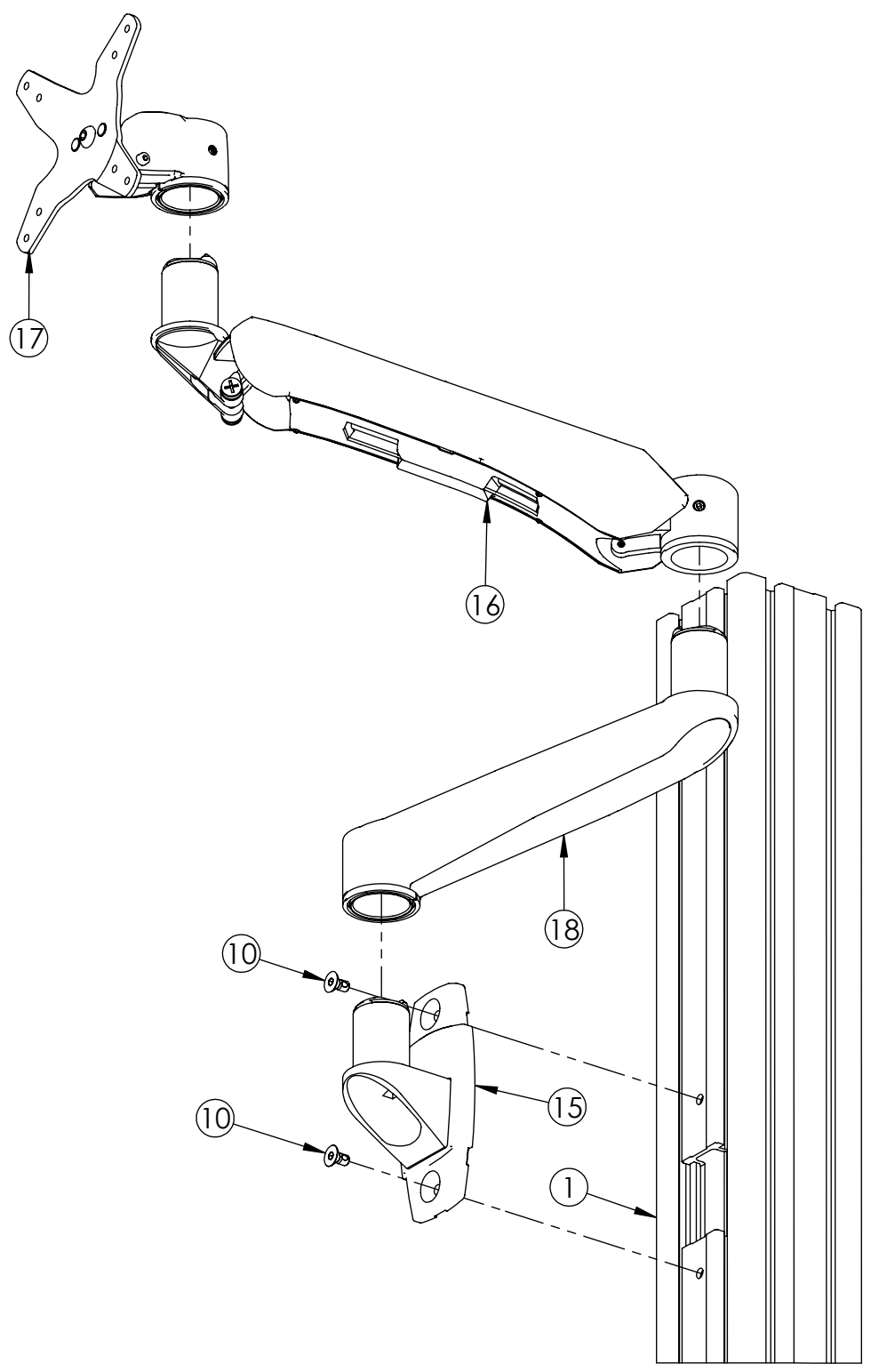
E

D

C

B

A



ASSEMBLY NOTES:

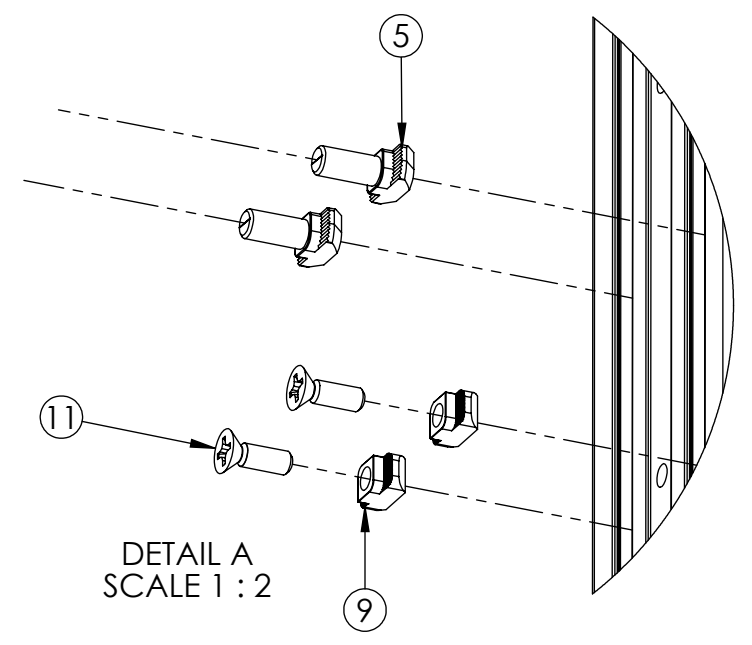
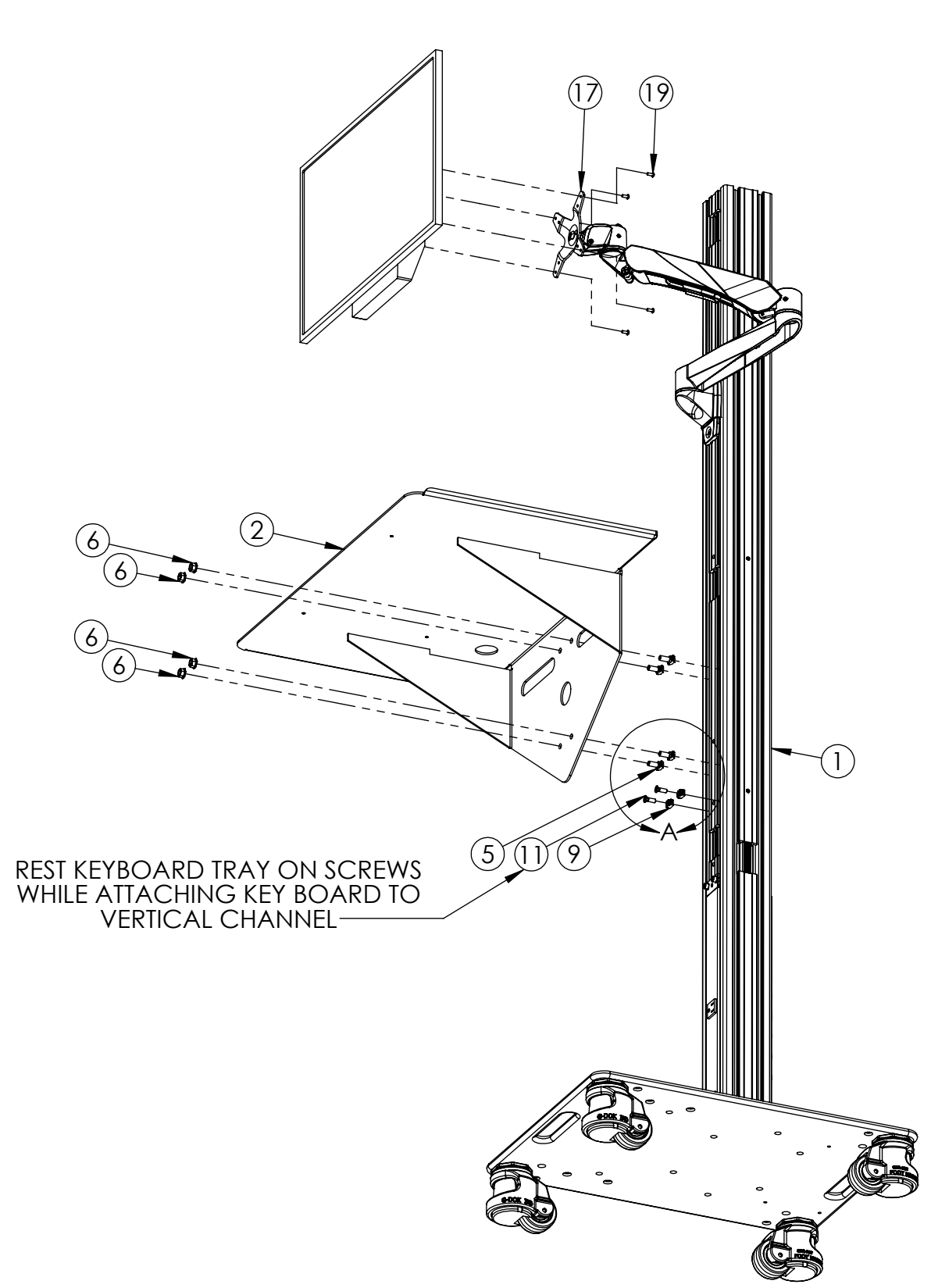
1. MOUNT ITEM (15) TO ITEM (1) WITH SCREW (10).
2. MOUNT ITEM (18) TO ITEM (15).
3. MOUNT ITEM (17) TO ITEM (16).

GENERAL FINISH NOTE		UNLESS OTHERWISE SPECIFIED:		NAME	DATE
DE-BURR AND BREAK ALL SHARP EDGES BEFORE FINISH AND/OR SHIPPING		DIMENSIONS ARE IN INCHES TOLERANCES: ANGLES ±.25 TWO PLACE DECIMAL ±0.010 THREE PLACE DECIMAL ±0.005 FOUR PLACE DECIMAL ±0.0005 UNMARKED FILLETS/CHAMFER .06 DE-BURR ALL PARTS		DRAWN BY:	EMM 08/30/2021
PROPRIETARY AND CONFIDENTIAL		INTERPRET GEOMETRIC TOLERANCING PER: ASME Y14.5			
THE INFORMATION CONTAINED IN THIS DRAWING IS THE SOLE PROPERTY OF LASERLINC, INC. ANY REPRODUCTION IN PART OR AS A WHOLE WITHOUT THE WRITTEN PERMISSION OF LASERLINC, INC. IS PROHIBITED.		MATERIAL		63 RA SURFACE FINISH ALL FEATURES MUST MEET SPECIFICATION AFTER PLATING BEFORE POWDER-COAT IF PLATED OR POWDER-COATED SEE FINISH	
		FINISH		TITLE: SINGLE MONITOR MOBILE INSPECTION CENTER	
		DO NOT SCALE DRAWING		SIZE B	DWG. NO. 9600-0002-00
				SCALE: 1:4	REV C
				SHEET 4 OF 6	



8 7 6 5 4 3 2 1

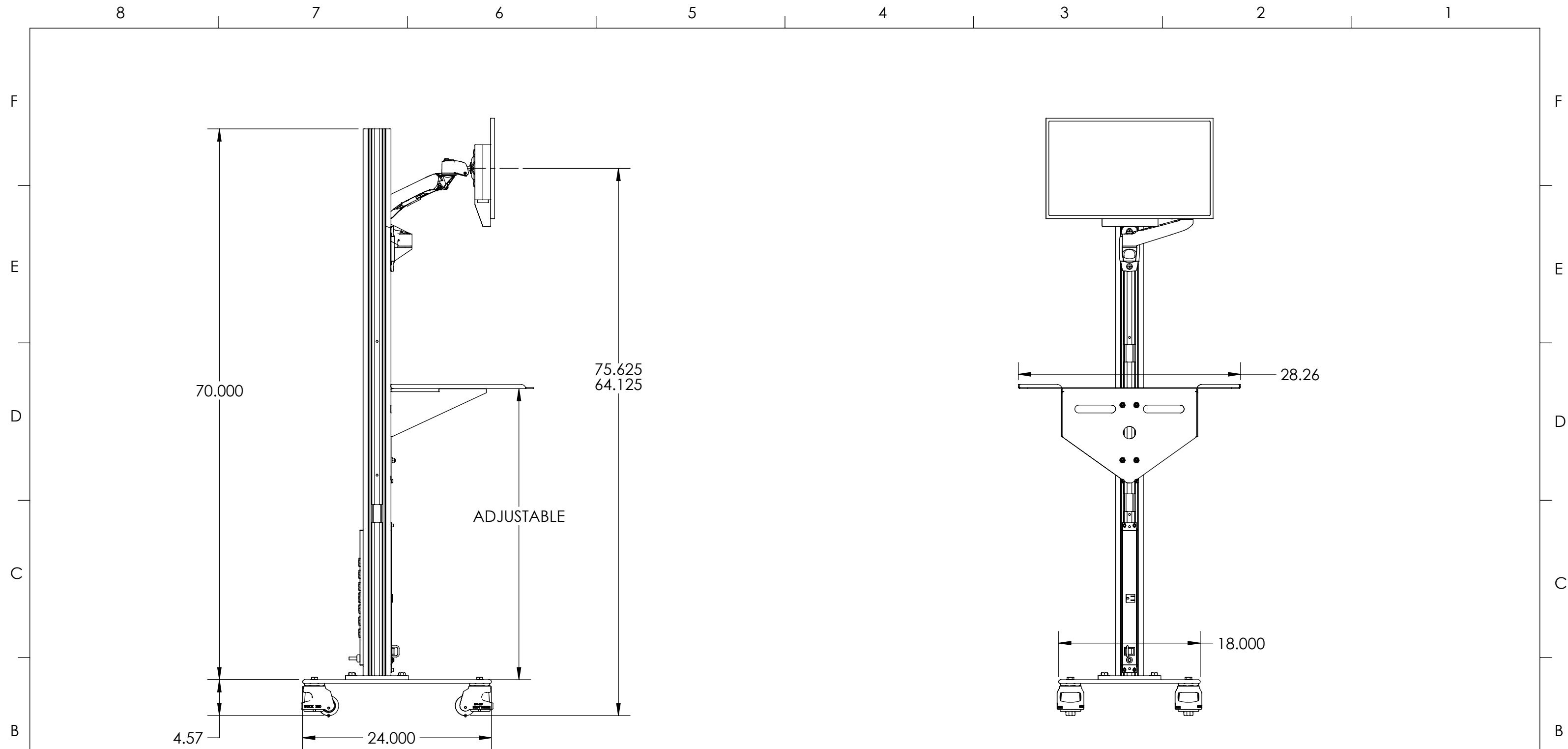
A




ASSEMBLY NOTES:

1. MOUNT MONITOR TO THE VESA MOUNTS (17) WITH ITEM (19).
2. THREAD ITEM (11) INTO (9) AND SLIDE INTO THE SLOT ABOVE OPENING AND SECURE IN LOCATION.
3. SLIDE ITEM (5) T-NUTS THROUGH THE BACK SIDE OF KEYBOARD TRAY (2) AS INDICATED AND THREAD ON ITEM (6) TO PRE FOR MOUNTING.
4. SET THE KEY BOARD TRAY (2) ONTO SCREW (11) TO SUPPORT THE WEIGHT AND SLIDE T-NUT (5) INTO THE SLOTS, ROTATE TO SECURE BEFORE TIGHTENING ITEM (6) .

GENERAL FINISH NOTE DE-BURR AND BREAK ALL SHARP EDGES BEFORE FINISH AND/OR SHIPPING	UNLESS OTHERWISE SPECIFIED: DIMENSIONS ARE IN INCHES TOLERANCES: ANGLES ±.25° TWO PLACE DECIMAL ±0.010 THREE PLACE DECIMAL ±0.005 FOUR PLACE DECIMAL ±0.0005 UNMARKED FILLETS/CHAMFER .06 DE-BURR ALL PARTS	NAME: EMM DATE: 08/30/2021	LASERLINC, INC. PHONE: 888-707-4892 INFO@LASERLINC.COM WWW.LASERLINC.COM
	PROPRIETARY AND CONFIDENTIAL THE INFORMATION CONTAINED IN THIS DRAWING IS THE SOLE PROPERTY OF LASERLINC, INC. ANY REPRODUCTION IN PART OR AS A WHOLE WITHOUT THE WRITTEN PERMISSION OF LASERLINC, INC. IS PROHIBITED.	INTERPRET GEOMETRIC TOLERANCING PER: ASME Y14.5 MATERIAL: FINISH: DO NOT SCALE DRAWING	
63 RA SURFACE FINISH ALL FEATURES MUST MEET SPECIFICATION AFTER PLATING BEFORE POWDER-COAT IF PLATED OR POWDER-COATED SEE FINISH		SIZE: B DWG. NO.: 9600-0002-00 SCALE: 1:10	REV: C SHEET 5 OF 6



GENERAL FINISH NOTE		UNLESS OTHERWISE SPECIFIED:		NAME	DATE
DE-BURR AND BREAK ALL SHARP EDGES BEFORE FINISH AND/OR SHIPPING		DIMENSIONS ARE IN INCHES TOLERANCES: ANGLES ±.25° TWO PLACE DECIMAL ±0.010 THREE PLACE DECIMAL ±0.005 FOUR PLACE DECIMAL ±0.0005 UNMARKED FILLETS/CHAMFER .06 DE-BURR ALL PARTS		DRAWN BY:	EMM 08/30/2021
PROPRIETARY AND CONFIDENTIAL		INTERPRET GEOMETRIC TOLERANCING PER: ASME Y14.5			
THE INFORMATION CONTAINED IN THIS DRAWING IS THE SOLE PROPERTY OF LASERLINC, INC. ANY REPRODUCTION IN PART OR AS A WHOLE WITHOUT THE WRITTEN PERMISSION OF LASERLINC, INC. IS PROHIBITED.		MATERIAL		63 RA SURFACE FINISH ALL FEATURES MUST MEET SPECIFICATION AFTER PLATING BEFORE POWDER-COAT IF PLATED OR POWDER-COATED SEE FINISH	
		FINISH			
		DO NOT SCALE DRAWING			
				 LASERLINC, INC. PHONE: 888-707-4892 INFO@LASERLINC.COM WWW.LASERLINC.COM	
				TITLE: SINGLE MONITOR MOBILE INSPECTION CENTER	
SIZE	DWG. NO.			REV	
B	9600-0002-00			C	
			SCALE: 1:12	SHEET 6 OF 6	