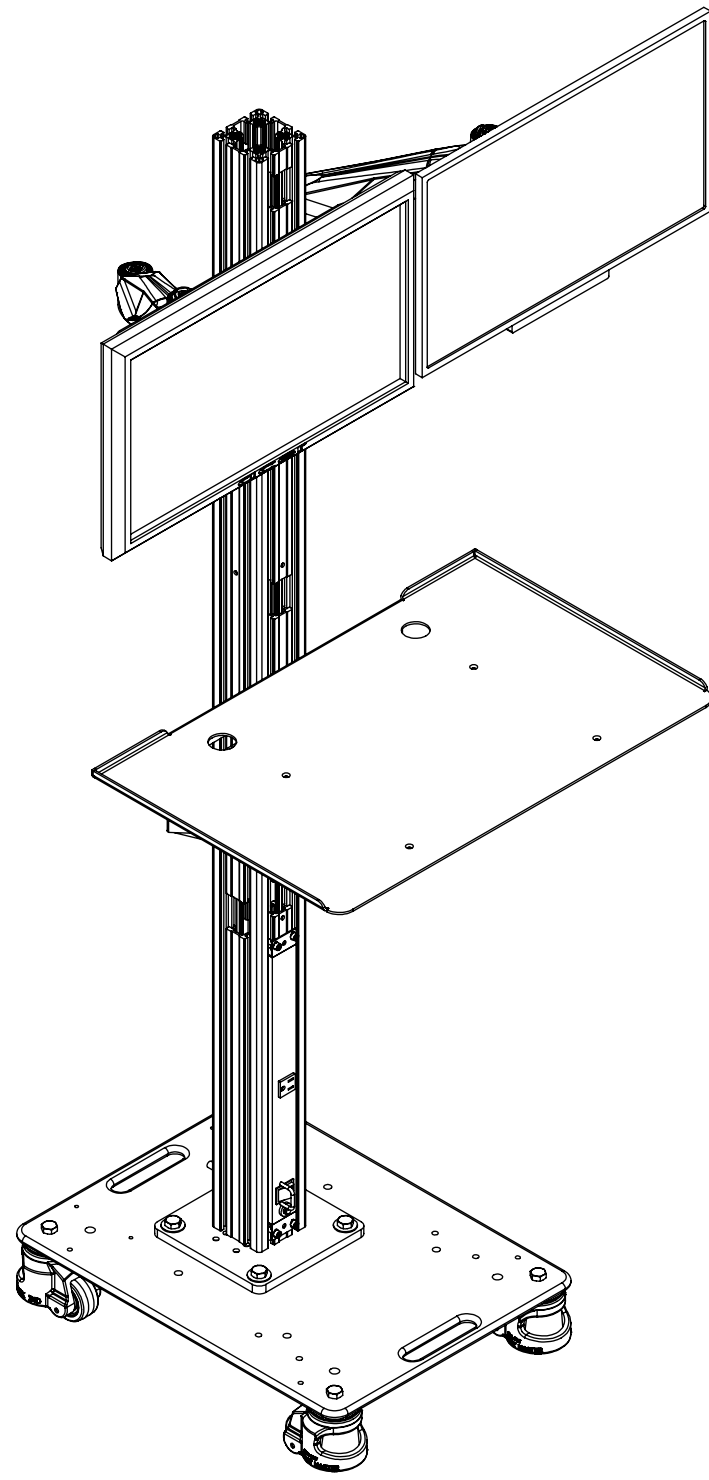


8 7 6 5 4 3 2 1

F
E
D
C
B
A




REVISIONS				
ZONE	REV.	DESCRIPTION	DATE	APPROVED
	A	ADDED MOBILE BASE ASSEMBLY AND COMPUTER MOUNTING	9/5/2012	DRP
	B	ADDED MOUNTING BASE AND HARDWARE	12/8/2022	EMM
	C	CHANGED THE MONITOR MOUNTING	3/7/2023	EMM

DUAL MONITOR MOBILE INSPECTION CENTER

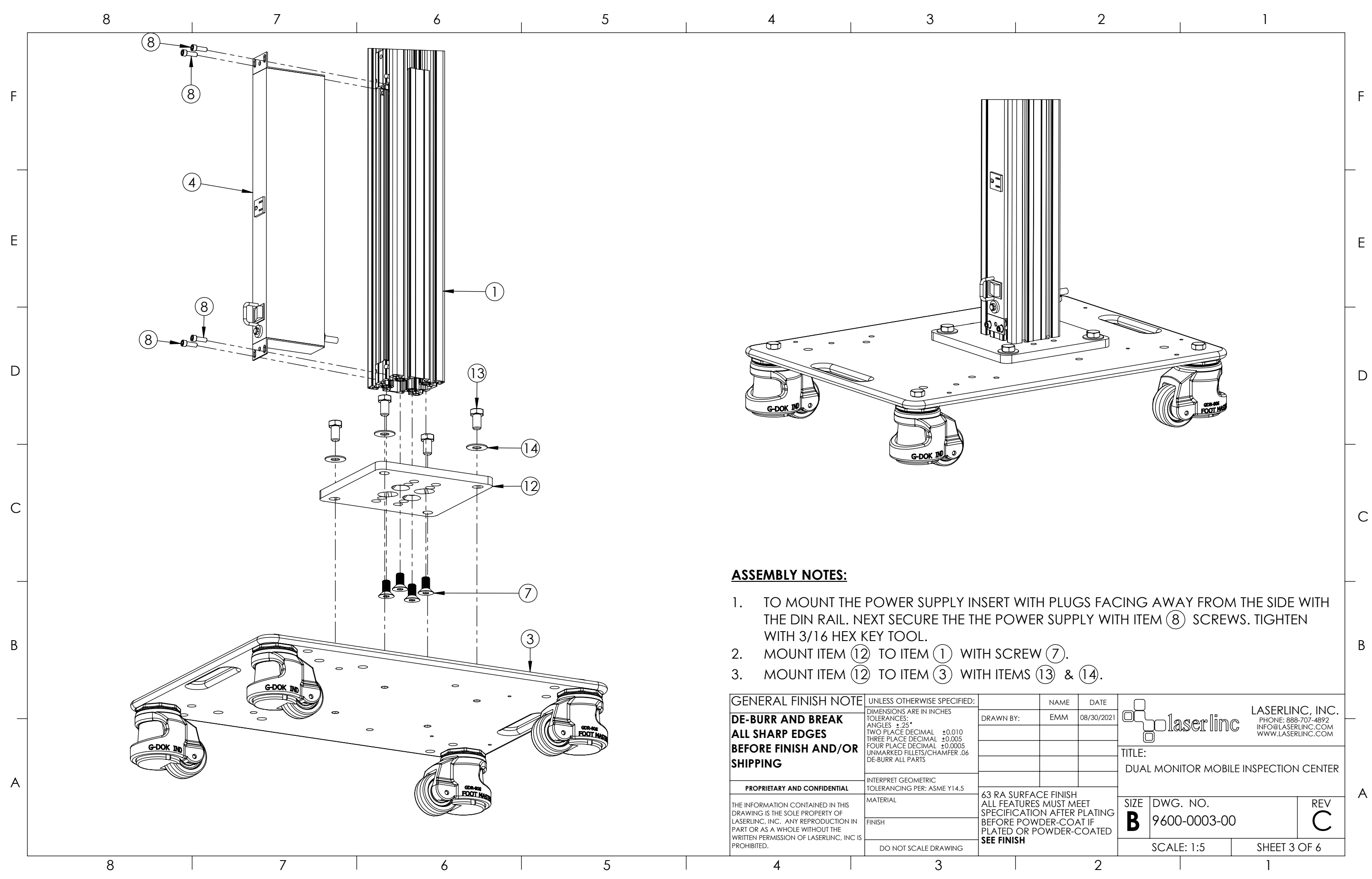
INDEX

- (1) COVER PAGE
- (2) BOM TABLE
- (3) MOUNT BASE
- (4) VESA MOUNT
- (5) MOUNTING TRAY

GENERAL FINISH NOTE		UNLESS OTHERWISE SPECIFIED:		NAME	DATE	 LASERLINC, INC. PHONE: 888-707-4892 INFO@LASERLINC.COM WWW.LASERLINC.COM
DE-BURR AND BREAK ALL SHARP EDGES BEFORE FINISH AND/OR SHIPPING		DIMENSIONS ARE IN INCHES TOLERANCES: ANGLES ±.25° TWO PLACE DECIMAL ±0.010 THREE PLACE DECIMAL ±0.005 FOUR PLACE DECIMAL ±0.0005 UNMARKED FILLETS/CHAMFER .06 DE-BURR ALL PARTS		DRAWN BY:	EMM	
PROPRIETARY AND CONFIDENTIAL		INTERPRET GEOMETRIC TOLERANCING PER: ASME Y14.5				TITLE:
THE INFORMATION CONTAINED IN THIS DRAWING IS THE SOLE PROPERTY OF LASERLINC, INC. ANY REPRODUCTION IN PART OR AS A WHOLE WITHOUT THE WRITTEN PERMISSION OF LASERLINC, INC. IS PROHIBITED.		MATERIAL				DUAL MONITOR MOBILE INSPECTION CENTER
		FINISH				SIZE
		DO NOT SCALE DRAWING				B DWG. NO. 9600-0003-00
						REV
						C
				SCALE: 1:10		SHEET 1 OF 6


8 7 6 5 4 3 2 1

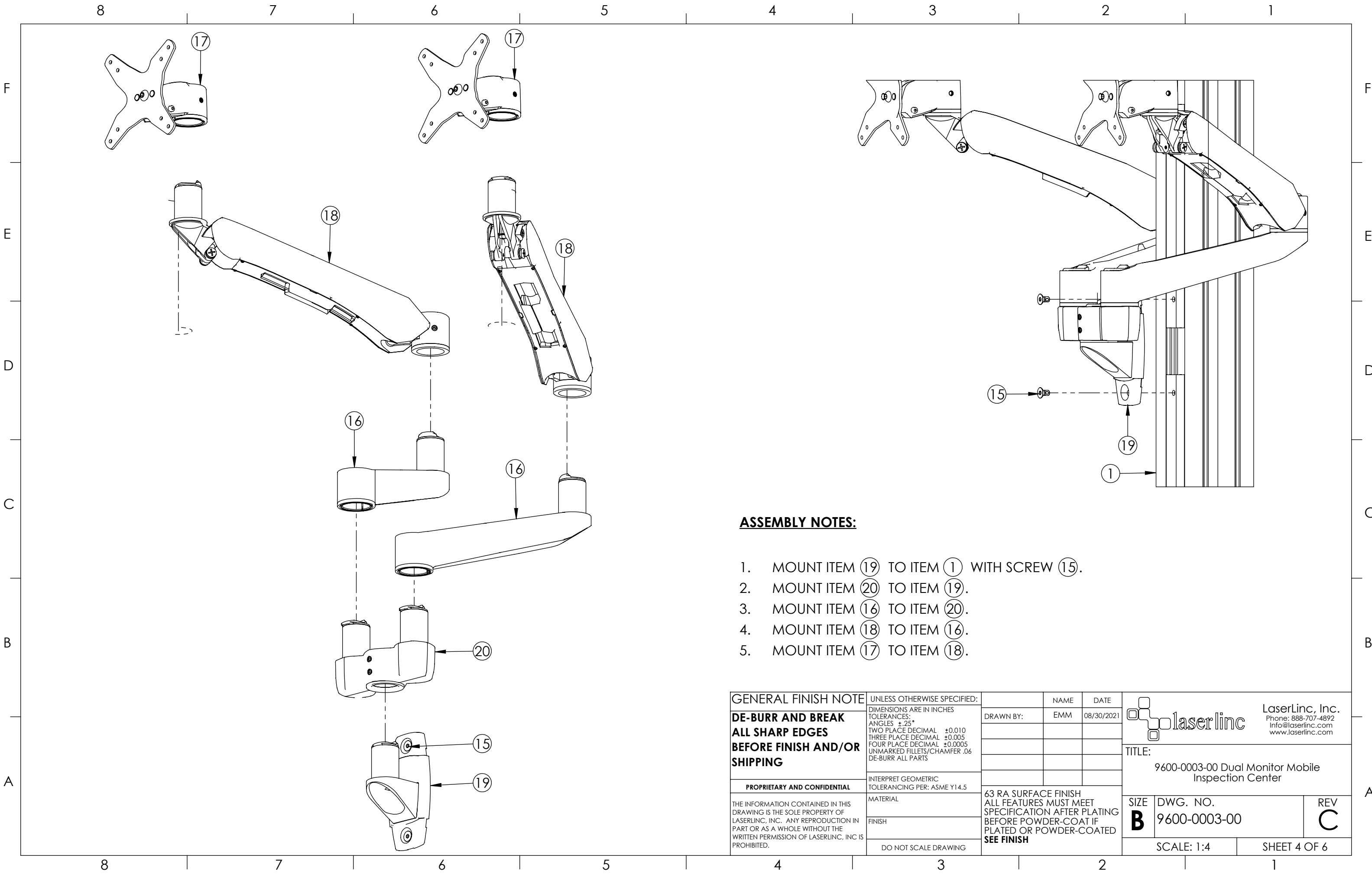
F
E
D
C
B
A



ASSEMBLY NOTES:


1. TO MOUNT THE POWER SUPPLY INSERT WITH PLUGS FACING AWAY FROM THE SIDE WITH THE DIN RAIL. NEXT SECURE THE THE POWER SUPPLY WITH ITEM (8) SCREWS. TIGHTEN WITH 3/16 HEX KEY TOOL.
2. MOUNT ITEM (12) TO ITEM (1) WITH SCREW (7).
3. MOUNT ITEM (12) TO ITEM (3) WITH ITEMS (13) & (14).

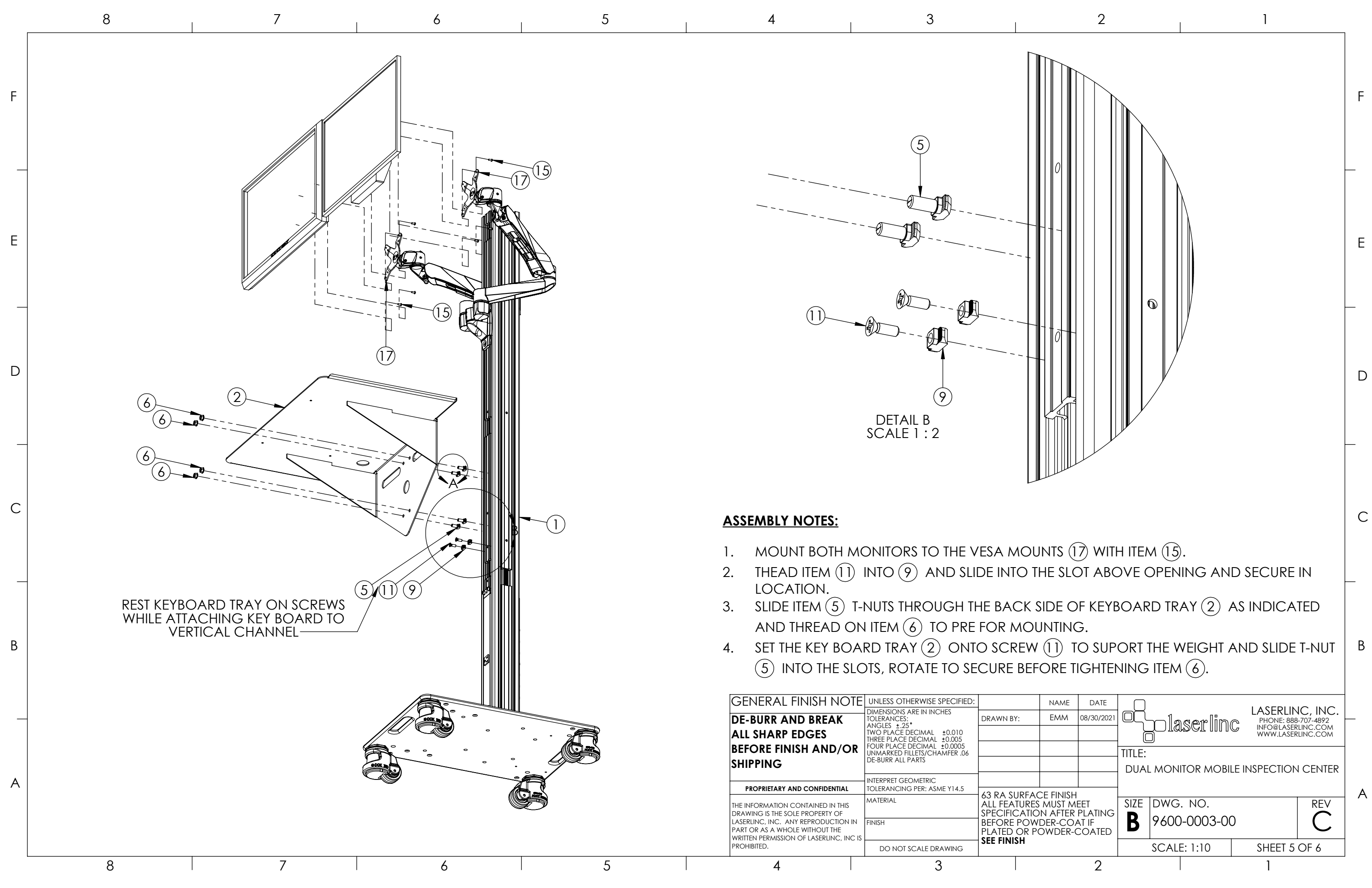
GENERAL FINISH NOTE	UNLESS OTHERWISE SPECIFIED:	NAME	DATE		LASERLINC, INC. PHONE: 888-707-4892 INFO@LASERLINC.COM WWW.LASERLINC.COM		
	DE-BURR AND BREAK ALL SHARP EDGES BEFORE FINISH AND/OR SHIPPING	DIMENSIONS ARE IN INCHES TOLERANCES: ANGLES ±.25 TWO PLACE DECIMAL ±0.010 THREE PLACE DECIMAL ±0.005 FOUR PLACE DECIMAL ±0.0005 UNMARKED FILLETS/CHAMFER .06 DE-BURR ALL PARTS	DRAWN BY:			EMM	08/30/2021
PROPRIETARY AND CONFIDENTIAL	INTERPRET GEOMETRIC TOLERANCING PER: ASME Y14.5	TITLE: DUAL MONITOR MOBILE INSPECTION CENTER			SIZE B	DWG. NO. 9600-0003-00	REV C
THE INFORMATION CONTAINED IN THIS DRAWING IS THE SOLE PROPERTY OF LASERLINC, INC. ANY REPRODUCTION IN PART OR AS A WHOLE WITHOUT THE WRITTEN PERMISSION OF LASERLINC, INC. IS PROHIBITED.	MATERIAL FINISH DO NOT SCALE DRAWING	63 RA SURFACE FINISH ALL FEATURES MUST MEET SPECIFICATION AFTER PLATING BEFORE POWDER-COAT IF PLATED OR POWDER-COATED SEE FINISH					



ASSEMBLY NOTES:

1. MOUNT ITEM (19) TO ITEM (1) WITH SCREW (15).
2. MOUNT ITEM (20) TO ITEM (19).
3. MOUNT ITEM (16) TO ITEM (20).
4. MOUNT ITEM (18) TO ITEM (16).
5. MOUNT ITEM (17) TO ITEM (18).

GENERAL FINISH NOTE		UNLESS OTHERWISE SPECIFIED:		NAME	DATE
DE-BURR AND BREAK ALL SHARP EDGES BEFORE FINISH AND/OR SHIPPING		DIMENSIONS ARE IN INCHES TOLERANCES: ANGLES ±.25 TWO PLACE DECIMAL ±0.010 THREE PLACE DECIMAL ±0.005 FOUR PLACE DECIMAL ±0.0005 UNMARKED FILLETS/CHAMFER .06 DE-BURR ALL PARTS		DRAWN BY:	EMM 08/30/2021
PROPRIETARY AND CONFIDENTIAL		INTERPRET GEOMETRIC TOLERANCING PER: ASME Y14.5			
THE INFORMATION CONTAINED IN THIS DRAWING IS THE SOLE PROPERTY OF LASERLINC, INC. ANY REPRODUCTION IN PART OR AS A WHOLE WITHOUT THE WRITTEN PERMISSION OF LASERLINC, INC. IS PROHIBITED.		MATERIAL		63 RA SURFACE FINISH ALL FEATURES MUST MEET SPECIFICATION AFTER PLATING BEFORE POWDER-COAT IF PLATED OR POWDER-COATED SEE FINISH	
		FINISH			
		DO NOT SCALE DRAWING			
				 LaserLinc, Inc. Phone: 888-707-4892 Info@laserlinc.com www.laserlinc.com	
				TITLE: 9600-0003-00 Dual Monitor Mobile Inspection Center	
		SIZE	DWG. NO.		REV
		B	9600-0003-00		C
		SCALE: 1:4		SHEET 4 OF 6	



REST KEYBOARD TRAY ON SCREWS WHILE ATTACHING KEY BOARD TO VERTICAL CHANNEL

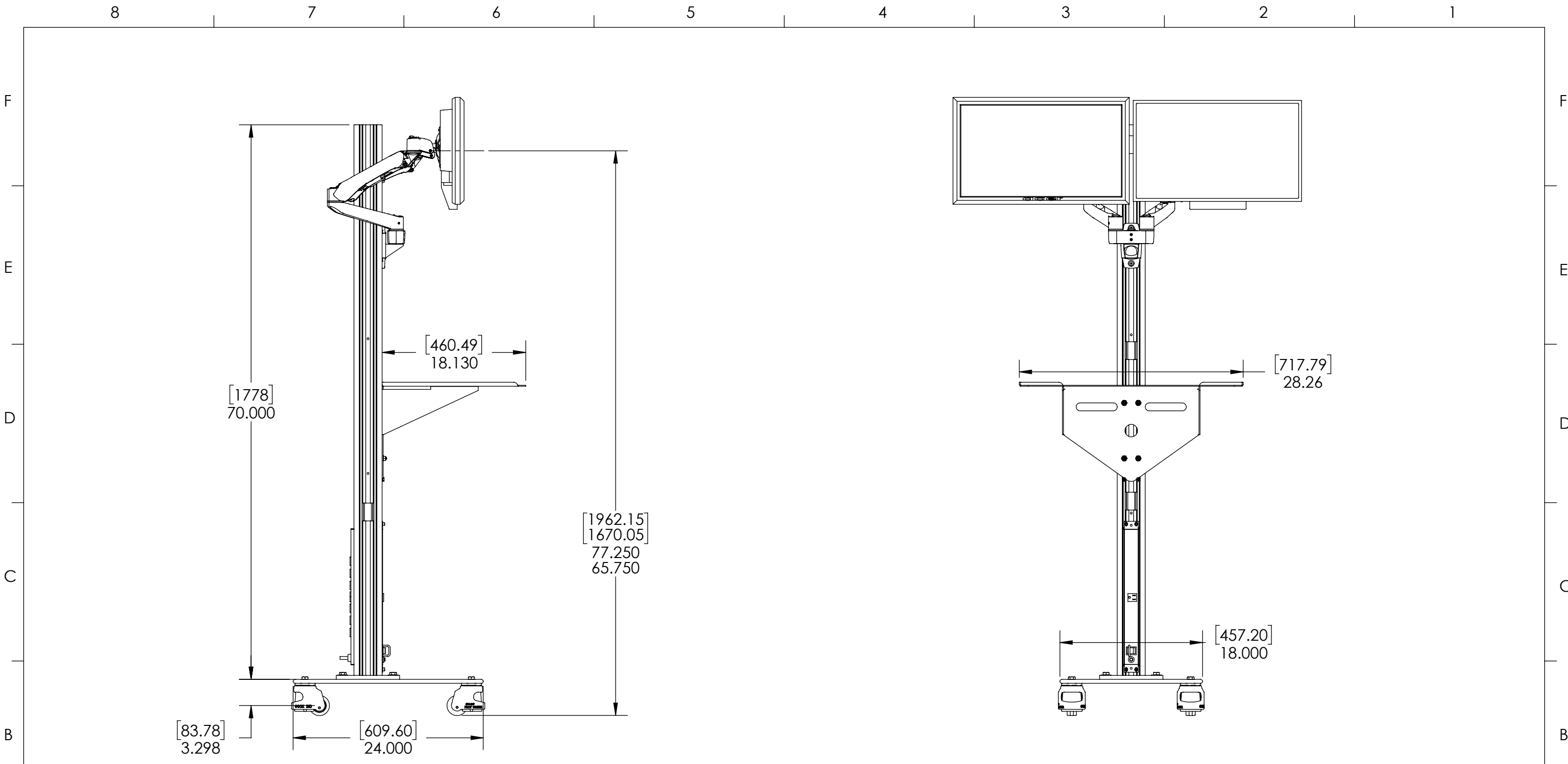
DETAIL B
SCALE 1 : 2


ASSEMBLY NOTES:

1. MOUNT BOTH MONITORS TO THE VESA MOUNTS (17) WITH ITEM (15).
2. THREAD ITEM (11) INTO (9) AND SLIDE INTO THE SLOT ABOVE OPENING AND SECURE IN LOCATION.
3. SLIDE ITEM (5) T-NUTS THROUGH THE BACK SIDE OF KEYBOARD TRAY (2) AS INDICATED AND THREAD ON ITEM (6) TO PRE FOR MOUNTING.
4. SET THE KEY BOARD TRAY (2) ONTO SCREW (11) TO SUPPORT THE WEIGHT AND SLIDE T-NUT (5) INTO THE SLOTS, ROTATE TO SECURE BEFORE TIGHTENING ITEM (6).

GENERAL FINISH NOTE		UNLESS OTHERWISE SPECIFIED:		NAME	DATE
DE-BURR AND BREAK ALL SHARP EDGES BEFORE FINISH AND/OR SHIPPING		DIMENSIONS ARE IN INCHES TOLERANCES: ANGLES ±.25 TWO PLACE DECIMAL ±0.010 THREE PLACE DECIMAL ±0.005 FOUR PLACE DECIMAL ±0.0005 UNMARKED FILLETS/CHAMFER .04 DE-BURR ALL PARTS		DRAWN BY:	EMM 08/30/2021
PROPRIETARY AND CONFIDENTIAL		INTERPRET GEOMETRIC TOLERANCING PER: ASME Y14.5		TITLE: DUAL MONITOR MOBILE INSPECTION CENTER	
THE INFORMATION CONTAINED IN THIS DRAWING IS THE SOLE PROPERTY OF LASERLINC, INC. ANY REPRODUCTION IN PART OR AS A WHOLE WITHOUT THE WRITTEN PERMISSION OF LASERLINC, INC. IS PROHIBITED.		MATERIAL		63 RA SURFACE FINISH ALL FEATURES MUST MEET SPECIFICATION AFTER PLATING BEFORE POWDER-COAT IF PLATED OR POWDER-COATED SEE FINISH	
		FINISH		SIZE B	DWG. NO. 9600-0003-00
		DO NOT SCALE DRAWING		SCALE: 1:10	REV C
				SHEET 5 OF 6	





GENERAL FINISH NOTE DE-BURR AND BREAK ALL SHARP EDGES BEFORE FINISH AND/OR SHIPPING	UNLESS OTHERWISE SPECIFIED: DIMENSIONS ARE IN INCHES TOLERANCES: ANGLES ±.25° TWO PLACE DECIMAL ±0.010 THREE PLACE DECIMAL ±0.005 FOUR PLACE DECIMAL ±0.0005 UNMARKED FILLETS/CHAMFER .06 DE-BURR ALL PARTS	NAME DATE	 LASERLINC, INC. PHONE: 888-707-4892 INFO@LASERLINC.COM WWW.LASERLINC.COM	
	PROPRIETARY AND CONFIDENTIAL THE INFORMATION CONTAINED IN THIS DRAWING IS THE SOLE PROPERTY OF LASERLINC, INC. ANY REPRODUCTION IN PART OR AS A WHOLE WITHOUT THE WRITTEN PERMISSION OF LASERLINC, INC. IS PROHIBITED.	INTERPRET GEOMETRIC TOLERANCING PER: ASME Y14.5 MATERIAL FINISH DO NOT SCALE DRAWING	DRAWN BY: EMM 08/30/2021	TITLE: DUAL MONITOR MOBILE INSPECTION CENTER
63 RA SURFACE FINISH ALL FEATURES MUST MEET SPECIFICATION AFTER PLATING BEFORE POWDER-COAT IF PLATED OR POWDER-COATED SEE FINISH		SIZE B	DWG. NO. 9600-0003-00	REV C
		SCALE: 1:12		SHEET 6 OF 6