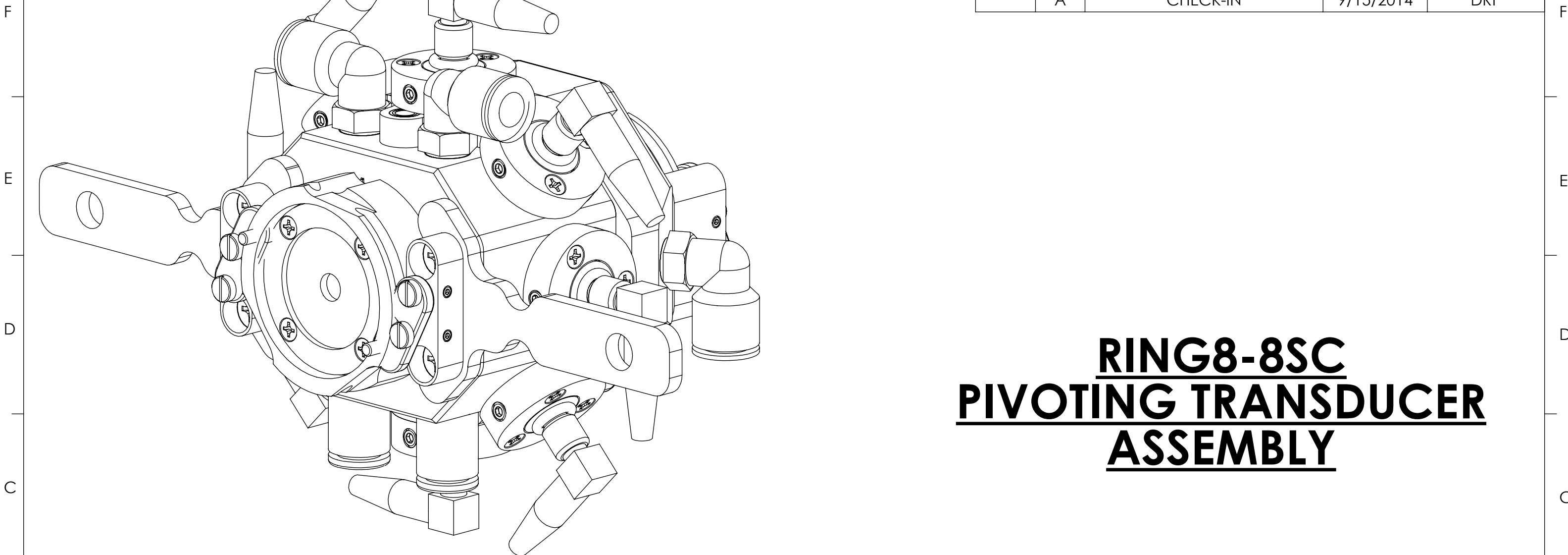


8 7 6 5 4 3 2 1


REVISIONS				
ZONE	REV.	DESCRIPTION	DATE	APPROVED
	A	CHECK-IN	9/15/2014	DRP



# RING8-8SC PIVOTING TRANSDUCER ASSEMBLY


## INDEX

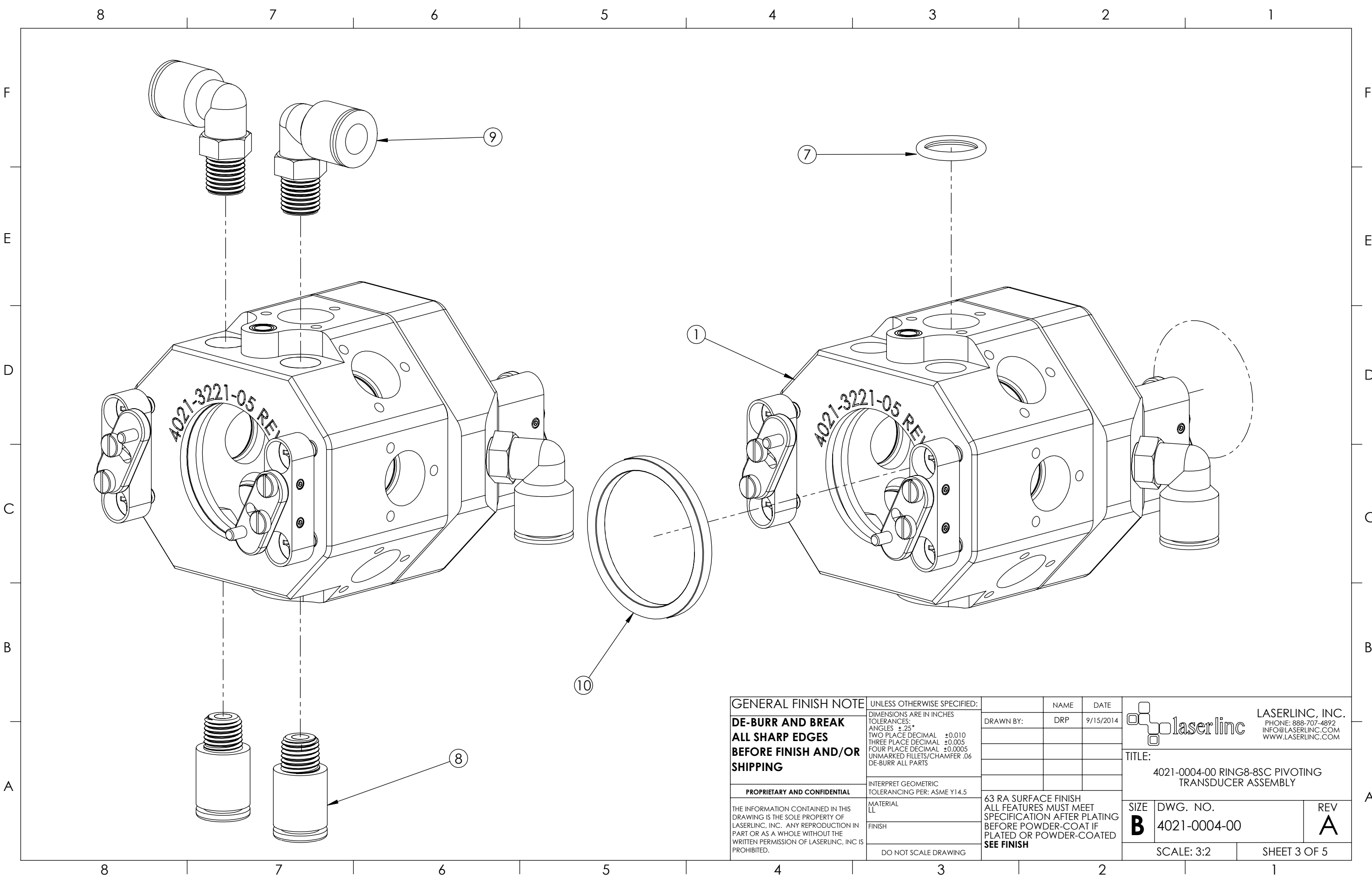
- (1) COVER PAGE
- (2) BOM TABLE
- (3) BOM VIEW 1
- (4) BOM VIEW 2
- (5) BOM VIEW 3


<b>GENERAL FINISH NOTE</b>		UNLESS OTHERWISE SPECIFIED:		NAME	DATE	 <b>LASERLINC, INC.</b> PHONE: 888-707-4892 INFO@LASERLINC.COM WWW.LASERLINC.COM
<b>DE-BURR AND BREAK ALL SHARP EDGES BEFORE FINISH AND/OR SHIPPING</b>		DIMENSIONS ARE IN INCHES TOLERANCES: ANGLES ±.25° TWO PLACE DECIMAL ±0.010 THREE PLACE DECIMAL ±0.005 FOUR PLACE DECIMAL ±0.0005 UNMARKED FILLETS/CHAMFER .06 DE-BURR ALL PARTS		DRAWN BY:	DRP	
<b>PROPRIETARY AND CONFIDENTIAL</b>		INTERPRET GEOMETRIC TOLERANCING PER: ASME Y14.5				
THE INFORMATION CONTAINED IN THIS DRAWING IS THE SOLE PROPERTY OF LASERLINC, INC. ANY REPRODUCTION IN PART OR AS A WHOLE WITHOUT THE WRITTEN PERMISSION OF LASERLINC, INC. IS PROHIBITED.		MATERIAL LL		63 RA SURFACE FINISH ALL FEATURES MUST MEET SPECIFICATION AFTER PLATING BEFORE POWDER-COAT IF PLATED OR POWDER-COATED <b>SEE FINISH</b>		TITLE: 4021-0004-00 RING8-8SC PIVOTING TRANSDUCER ASSEMBLY
		FINISH		SIZE <b>B</b>	DWG. NO. 4021-0004-00	REV <b>A</b>
		DO NOT SCALE DRAWING		SCALE: 3:2		SHEET 1 OF 5

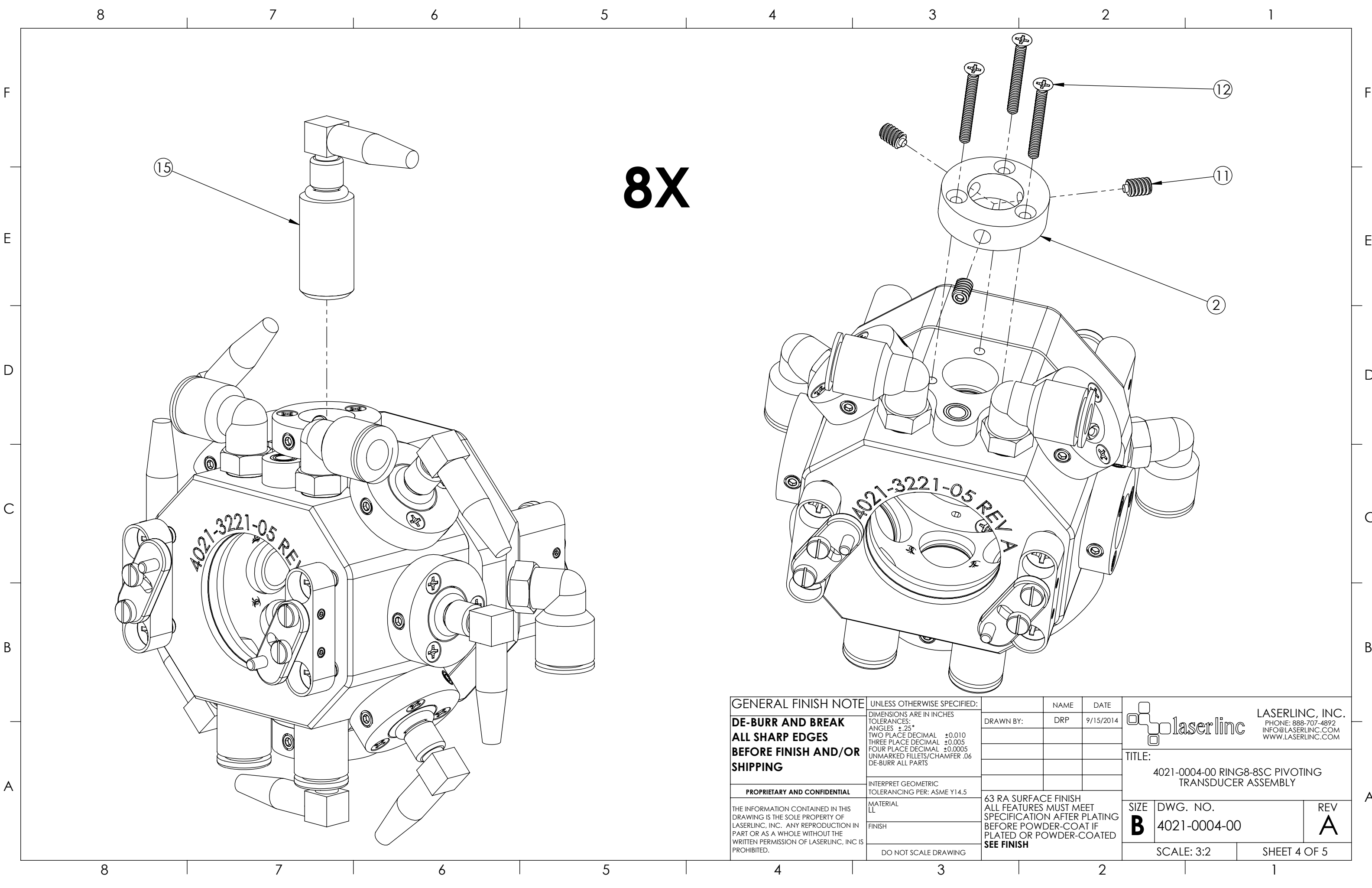
8 7 6 5 4 3 2 1

ITEM NO.	PART NUMBER	DESCRIPTION	Part Location	QTY.
1	4021-3221-05 Ring8-8SC Dry Block	REV A		1
2	4021-3205-05 Pivoting Transducer Ring	REV A	109-D	8
3	4021-3202-13 Ring8-8SC Dry-Block Mounting Flange	REV A		2
4	4021-3211-05 Transducer Water Pocket Extension	REV B	109-D	1
5	4021-3212-05 Transducer Water Pocket	REV B		1
6	4000-1116-01 Self-Contained Die Insert Latch Assembly	REV A		4
7	4015-2224-04 .0625 x .426ID x .566OD O-Ring	McMaster-Carr Part # 9555K14	109-B	8
8	4021-2205-04 1-16 NPT x 1-4in OD Straight Push-to-Connect Fitting	McMaster-Carr Part # 52065K218		2
9	4601-2217-04 1-4 Tube x 1-16 NPT Swivel Push-to-Connect	Norgren Part # M24470416		4
10	4021-2204-04 1.112 ID x 1.318 OD x .103 W Square Buna-N O-Ring	McMaster-Carr Part # 4061T168		1
11	4102-2204-04 6-32 x 3-16 Nylon Tip Set Screw - SS	McMaster-Carr Part # 90291A143	17-M	24
12	0000-2223-04 2-56 x 1-2L FH PH SS	McMaster-Carr Part # 91771A081		28
13	2418T132	McMaster-Carr Part # 2418T132		1
14	4021-2202-04 1.112 ID x 1.318 OD x .103 W EPDM O-Ring	McMaster-Carr Part # 9557K155	101-Q	1
15	4002-2310-33 Transducer and Micro-Dot BNC Assembly	REV J	104	8
16	04021-41 Ring4-8SC Die Insert Assembly	REV E	-	2


A	<b>GENERAL FINISH NOTE</b>		UNLESS OTHERWISE SPECIFIED:		NAME	DATE
	<b>DE-BURR AND BREAK ALL SHARP EDGES BEFORE FINISH AND/OR SHIPPING</b>		DIMENSIONS ARE IN INCHES TOLERANCES: ANGLES ±.25° TWO PLACE DECIMAL ±0.010 THREE PLACE DECIMAL ±0.005 FOUR PLACE DECIMAL ±0.0005 UNMARKED FILLETS/CHAMFER .06 DE-BURR ALL PARTS		DRAWN BY:	DRP 9/15/2014
	<b>PROPRIETARY AND CONFIDENTIAL</b>		INTERPRET GEOMETRIC TOLERANCING PER: ASME Y14.5		 <b>LASERLINC, INC.</b> PHONE: 888-707-4892 INFO@LASERLINC.COM WWW.LASERLINC.COM	
	THE INFORMATION CONTAINED IN THIS DRAWING IS THE SOLE PROPERTY OF LASERLINC, INC. ANY REPRODUCTION IN PART OR AS A WHOLE WITHOUT THE WRITTEN PERMISSION OF LASERLINC, INC. IS PROHIBITED.		MATERIAL LL			
		FINISH		63 RA SURFACE FINISH ALL FEATURES MUST MEET SPECIFICATION AFTER PLATING BEFORE POWDER-COAT IF PLATED OR POWDER-COATED <b>SEE FINISH</b>		TITLE: 4021-0004-00 RING8-8SC PIVOTING TRANSDUCER ASSEMBLY
		DO NOT SCALE DRAWING		SIZE <b>B</b>	DWG. NO. 4021-0004-00	REV <b>A</b>
				SCALE: 1:1		SHEET 2 OF 5

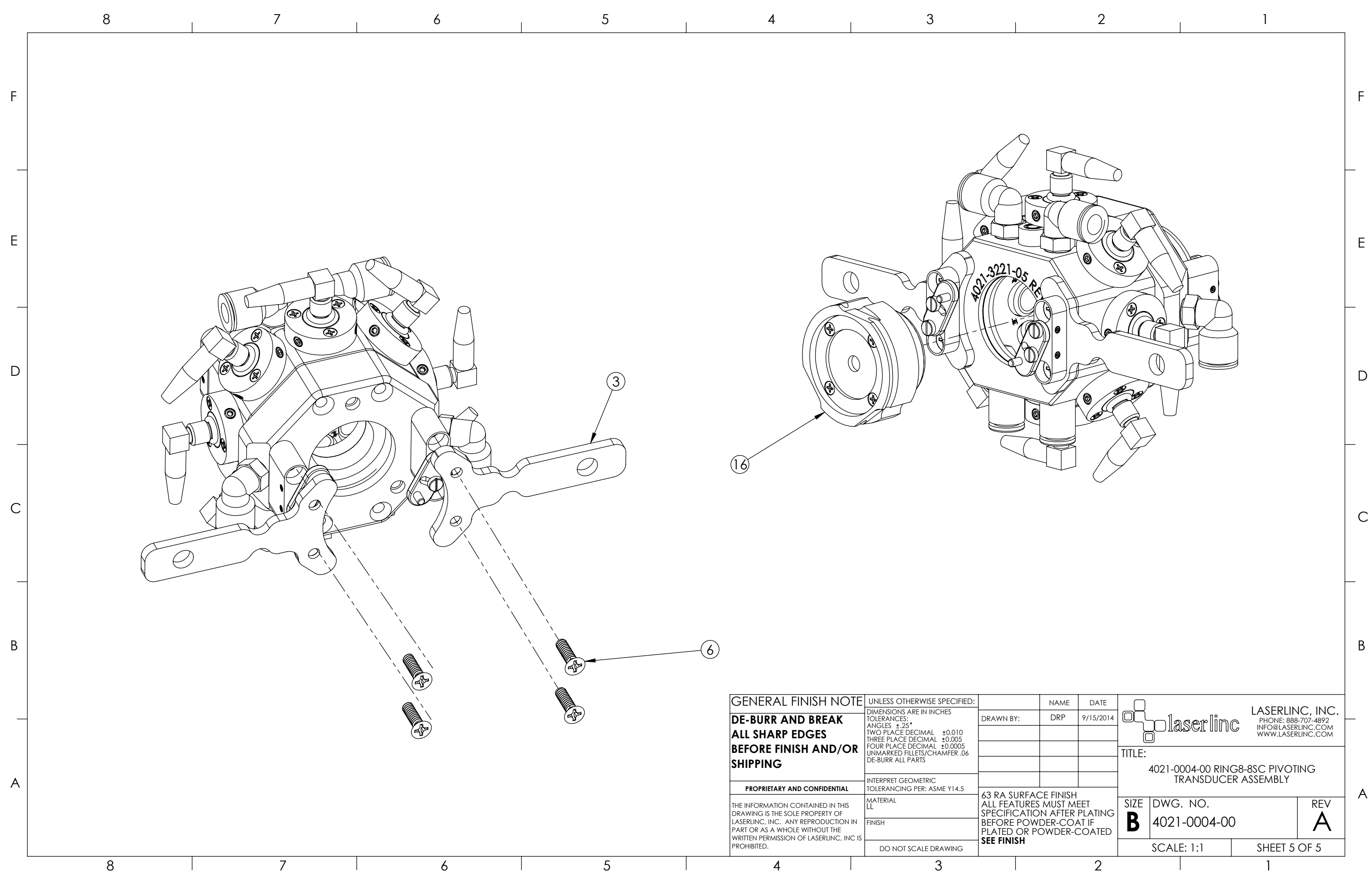



<b>GENERAL FINISH NOTE</b> <b>DE-BURR AND BREAK</b> <b>ALL SHARP EDGES</b> <b>BEFORE FINISH AND/OR SHIPPING</b>	UNLESS OTHERWISE SPECIFIED: DIMENSIONS ARE IN INCHES TOLERANCES: ANGLES ±.25 TWO PLACE DECIMAL ±0.010 THREE PLACE DECIMAL ±0.005 FOUR PLACE DECIMAL ±0.0005 UNMARKED FILLETS/CHAMFER .06 DE-BURR ALL PARTS	NAME DATE	 <b>LASERLINC, INC.</b> PHONE: 888-707-4892 INFO@LASERLINC.COM WWW.LASERLINC.COM
	<b>PROPRIETARY AND CONFIDENTIAL</b> THE INFORMATION CONTAINED IN THIS DRAWING IS THE SOLE PROPERTY OF LASERLINC, INC. ANY REPRODUCTION IN PART OR AS A WHOLE WITHOUT THE WRITTEN PERMISSION OF LASERLINC, INC. IS PROHIBITED.	INTERPRET GEOMETRIC TOLERANCING PER: ASME Y14.5 MATERIAL LL FINISH DO NOT SCALE DRAWING	
	63 RA SURFACE FINISH ALL FEATURES MUST MEET SPECIFICATION AFTER PLATING BEFORE POWDER-COAT IF PLATED OR POWDER-COATED <b>SEE FINISH</b>	SIZE <b>B</b> DWG. NO. 4021-0004-00 SCALE: 3:2	REV <b>A</b> SHEET 3 OF 5



8X

<b>GENERAL FINISH NOTE</b>		UNLESS OTHERWISE SPECIFIED:		NAME	DATE
<b>DE-BURR AND BREAK ALL SHARP EDGES BEFORE FINISH AND/OR SHIPPING</b>		DIMENSIONS ARE IN INCHES TOLERANCES: ANGLES ±.25 TWO PLACE DECIMAL ±0.010 THREE PLACE DECIMAL ±0.005 FOUR PLACE DECIMAL ±0.0005 UNMARKED FILLETS/CHAMFER .06 DE-BURR ALL PARTS		DRAWN BY:	DRP 9/15/2014
<b>PROPRIETARY AND CONFIDENTIAL</b>		INTERPRET GEOMETRIC TOLERANCING PER: ASME Y14.5			
THE INFORMATION CONTAINED IN THIS DRAWING IS THE SOLE PROPERTY OF LASERLINC, INC. ANY REPRODUCTION IN PART OR AS A WHOLE WITHOUT THE WRITTEN PERMISSION OF LASERLINC, INC. IS PROHIBITED.		MATERIAL LL		63 RA SURFACE FINISH ALL FEATURES MUST MEET SPECIFICATION AFTER PLATING BEFORE POWDER-COAT IF PLATED OR POWDER-COATED <b>SEE FINISH</b>	
		FINISH			
		DO NOT SCALE DRAWING			
				 <b>LASERLINC, INC.</b> PHONE: 888-707-4892 INFO@LASERLINC.COM WWW.LASERLINC.COM	
				TITLE: 4021-0004-00 RING8-8SC PIVOTING TRANSDUCER ASSEMBLY	
SIZE <b>B</b>	DWG. NO. 4021-0004-00		REV <b>A</b>		
			SCALE: 3:2	SHEET 4 OF 5	



<b>GENERAL FINISH NOTE</b> <b>DE-BURR AND BREAK</b> <b>ALL SHARP EDGES</b> <b>BEFORE FINISH AND/OR SHIPPING</b>	UNLESS OTHERWISE SPECIFIED: DIMENSIONS ARE IN INCHES TOLERANCES: ANGLES ±.25 TWO PLACE DECIMAL ±0.010 THREE PLACE DECIMAL ±0.005 FOUR PLACE DECIMAL ±0.0005 UNMARKED FILLETS/CHAMFER .06 DE-BURR ALL PARTS	NAME DATE	 <b>LASERLINC, INC.</b> PHONE: 888-707-4892 INFO@LASERLINC.COM WWW.LASERLINC.COM	
	<b>PROPRIETARY AND CONFIDENTIAL</b> THE INFORMATION CONTAINED IN THIS DRAWING IS THE SOLE PROPERTY OF LASERLINC, INC. ANY REPRODUCTION IN PART OR AS A WHOLE WITHOUT THE WRITTEN PERMISSION OF LASERLINC, INC. IS PROHIBITED.	INTERPRET GEOMETRIC TOLERANCING PER: ASME Y14.5 MATERIAL LL FINISH DO NOT SCALE DRAWING	DRAWN BY: DRP 9/15/2014	TITLE: 4021-0004-00 RING8-8SC PIVOTING TRANSDUCER ASSEMBLY
	63 RA SURFACE FINISH ALL FEATURES MUST MEET SPECIFICATION AFTER PLATING BEFORE POWDER-COAT IF PLATED OR POWDER-COATED <b>SEE FINISH</b>	SIZE <b>B</b> DWG. NO. 4021-0004-00 SCALE: 1:1	REV <b>A</b> SHEET 5 OF 5	