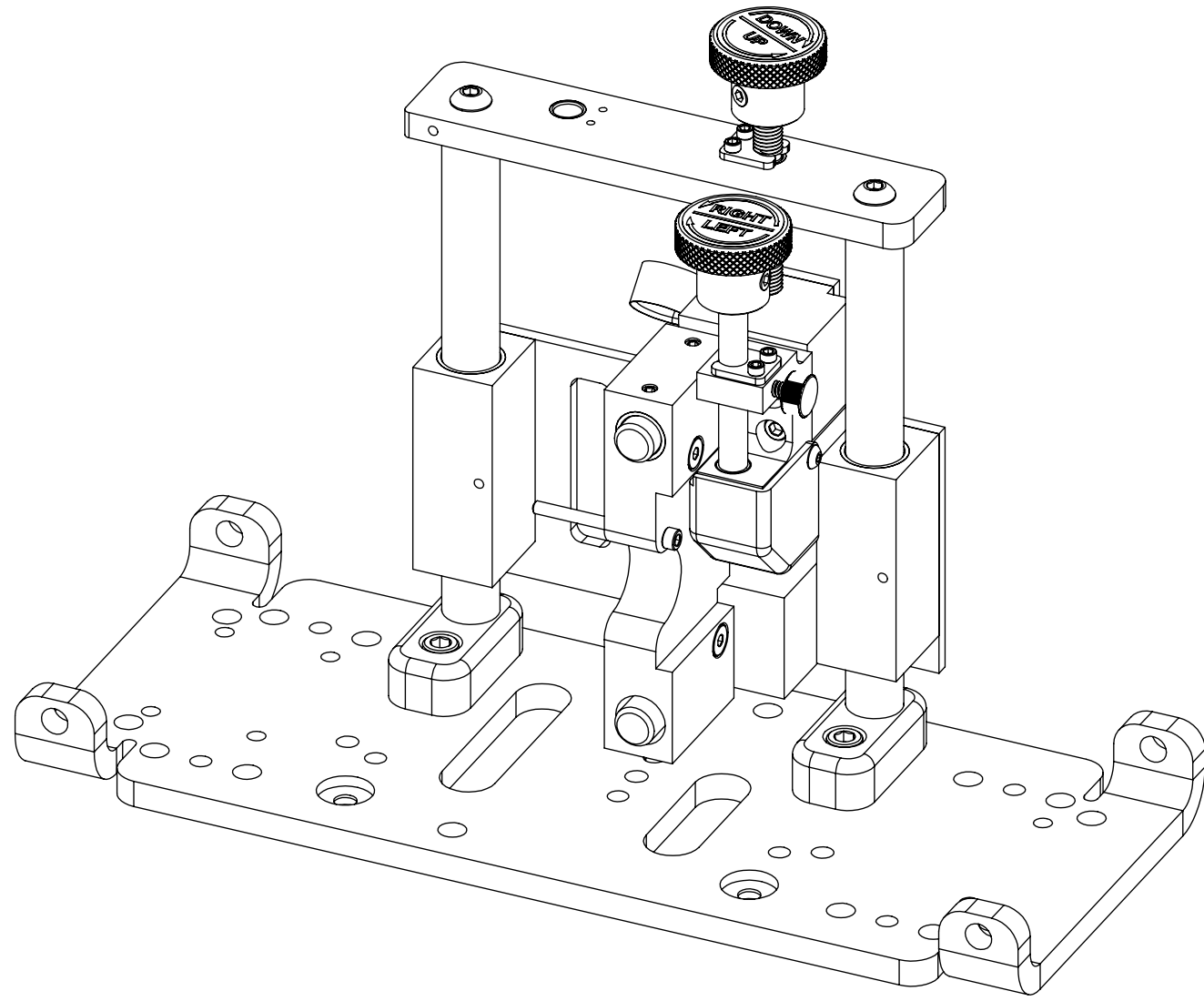


8 7 6 5 4 3 2 1

| REVISIONS |      |  |           |          |
|-----------|------|--|-----------|----------|
| ZONE      | REV. | DESCRIPTION  | DATE      | APPROVED |
|           | A    | CHECK-IN   | 6/6/2013  | DRP      |
|           | B    | CHANGED 8/32 MOUNTING HOLES TO 1/4-20  | 9/27/2013 | DRP      |
|           | C    | REPLACED XY ADJUSTMENT & TRANSDUCER ASSEMBLIES WITH NEWEST VERSIONS; BASE REDESIGN | 4/9/2019  | JWB      |




# ULTRA GUAGE 412 GEARED IN-TANK MOUNTING ASSEMBLY OVERALLS

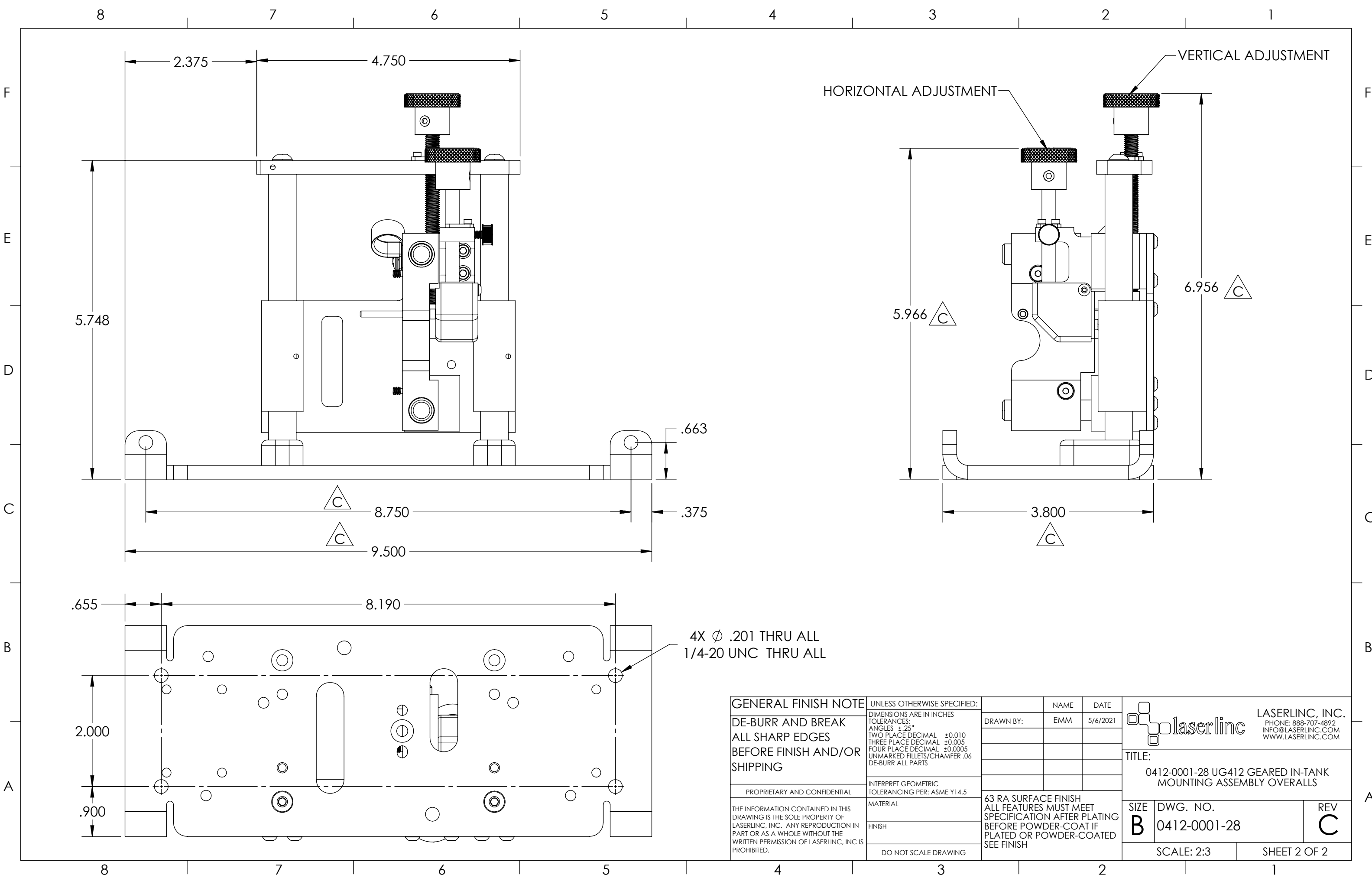
F  
E  
D  
C  
B  
A


F  
E  
D  
C  
B  
A

**INDEX**  
(1) COVER PAGE  
(2) DIMENSIONS

|  |   |   |   |   |
|--|---|---|---|---|
| <b>GENERAL FINISH NOTE</b><br>DE-BURR AND BREAK<br>ALL SHARP EDGES<br>BEFORE FINISH AND/OR<br>SHIPPING   | UNLESS OTHERWISE SPECIFIED:<br>DIMENSIONS ARE IN INCHES<br>TOLERANCES:<br>ANGLES ±.25°<br>TWO PLACE DECIMAL ±0.010<br>THREE PLACE DECIMAL ±0.005<br>FOUR PLACE DECIMAL ±0.0005<br>UNMARKED FILLETS/CHAMFER .06<br>DE-BURR ALL PARTS | NAME<br>EMM   | DATE<br>5/6/2021  |  LASERLINC, INC.<br>PHONE: 888-707-4892<br>INFO@LASERLINC.COM<br>WWW.LASERLINC.COM |
|  | PROPRIETARY AND CONFIDENTIAL  | INTERPRET GEOMETRIC<br>TOLERANCING PER: ASME Y14.5  | TITLE:<br>0412-0001-28 UG412 GEARED IN-TANK<br>MOUNTING ASSEMBLY OVERALLS |   |
| THE INFORMATION CONTAINED IN THIS<br>DRAWING IS THE SOLE PROPERTY OF<br>LASERLINC, INC. ANY REPRODUCTION IN<br>PART OR AS A WHOLE WITHOUT THE<br>WRITTEN PERMISSION OF LASERLINC, INC. IS<br>PROHIBITED. | MATERIAL  | 63 RA SURFACE FINISH<br>ALL FEATURES MUST MEET<br>SPECIFICATION AFTER PLATING<br>BEFORE POWDER-COAT IF<br>PLATED OR POWDER-COATED<br>SEE FINISH |   | SIZE<br>B   |
|  | FINISH  | DWG. NO.<br>0412-0001-28  |   | REV<br>C  |
|  | DO NOT SCALE DRAWING  | SCALE: 2:3  |   | SHEET 1 OF 2  |

8 7 6 5 4 3 2 1



|   |  |   |   |  |
|---|--|---|---|--|
| <b>GENERAL FINISH NOTE</b><br>DE-BURR AND BREAK<br>ALL SHARP EDGES<br>BEFORE FINISH AND/OR<br>SHIPPING  | UNLESS OTHERWISE SPECIFIED:<br>DIMENSIONS ARE IN INCHES<br>TOLERANCES:<br>ANGLES $\pm .25$<br>TWO PLACE DECIMAL $\pm 0.010$<br>THREE PLACE DECIMAL $\pm 0.005$<br>FOUR PLACE DECIMAL $\pm 0.0005$<br>UNMARKED FILLETS/CHAMFER .06<br>DE-BURR ALL PARTS | NAME<br>EMM   | DATE<br>5/6/2021  |  <b>LASERLINC, INC.</b><br>PHONE: 888-707-4892<br>INFO@LASERLINC.COM<br>WWW.LASERLINC.COM |
|   | PROPRIETARY AND CONFIDENTIAL   | INTERPRET GEOMETRIC<br>TOLERANCING PER: ASME Y14.5  | TITLE:<br>0412-0001-28 UG412 GEARED IN-TANK<br>MOUNTING ASSEMBLY OVERALLS |  |
| THE INFORMATION CONTAINED IN THIS<br>DRAWING IS THE SOLE PROPERTY OF<br>LASERLINC, INC. ANY REPRODUCTION IN<br>PART OR AS A WHOLE WITHOUT THE<br>WRITTEN PERMISSION OF LASERLINC, INC IS<br>PROHIBITED. | MATERIAL<br><br>FINISH<br><br>DO NOT SCALE DRAWING   | 63 RA SURFACE FINISH<br>ALL FEATURES MUST MEET<br>SPECIFICATION AFTER PLATING<br>BEFORE POWDER-COAT IF<br>PLATED OR POWDER-COATED<br>SEE FINISH |   | SIZE<br><b>B</b>   |
|   |  | DWG. NO.<br>0412-0001-28  | REV<br><b>C</b>   | SCALE: 2:3<br>SHEET 2 OF 2   |