


REVISIONS				
ZONE	REV.	DESCRIPTION	DATE	APPROVED
	A	INITIAL RELEASE	10/2/2023	JWB

**UG460 THRU-WALL
INSTALLATION
INSTRUCTIONS, TANK
SIZE: 8IN X 8IN [203mm
X 203mm]**

INDEX


- (1) COVER PAGE
- (2) BOM TABLE
- (3) MOUNT UG412 SENSOR ASSEMBLY
- (4) MOUNT SIDE PLATE
- (5) MOUNT BOTTOM PLATE
- (6) MOUNT ROLLER GUIDES
- (7) DIMENSIONS OV
- (8) TANK CUTOUT OV

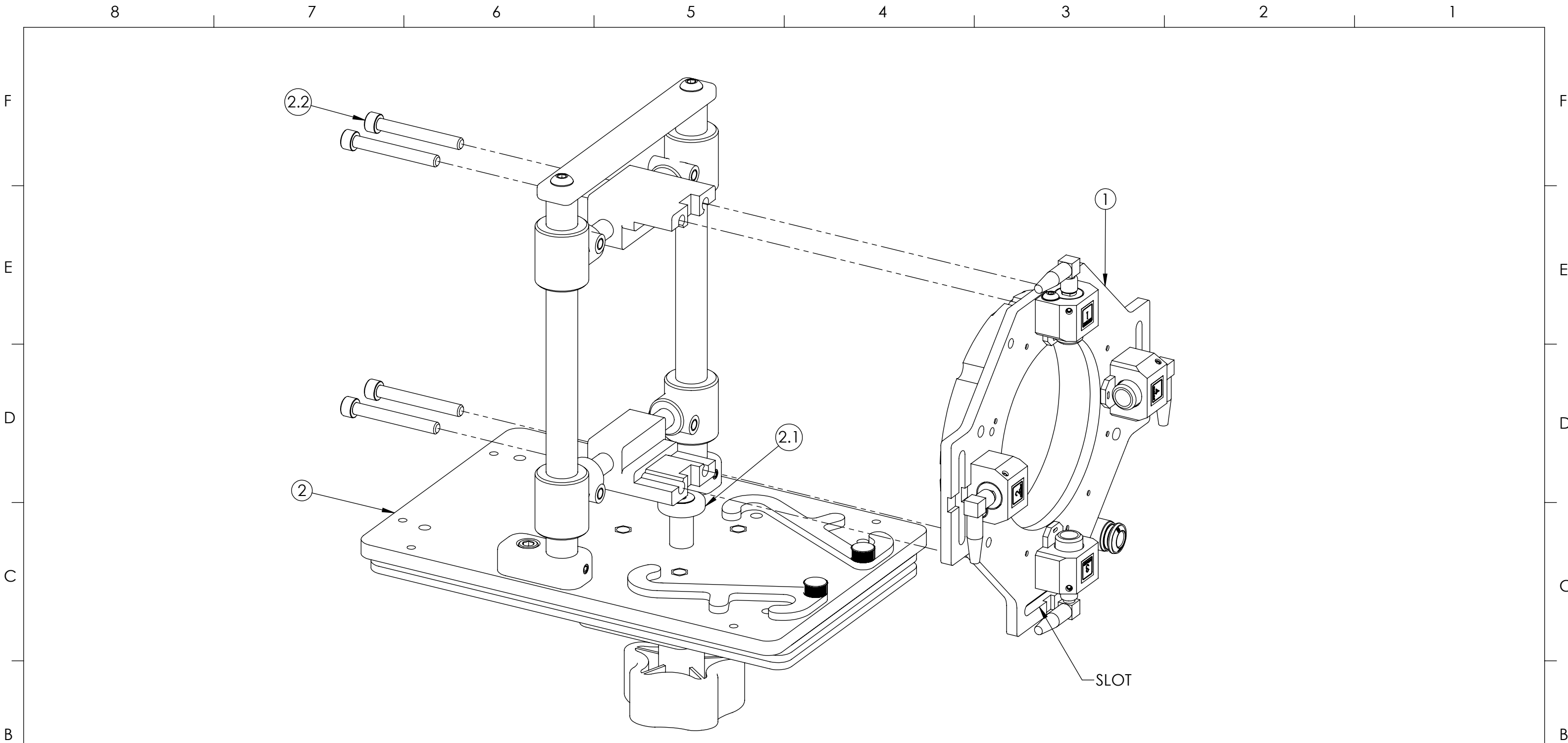
GENERAL FINISH NOTE		UNLESS OTHERWISE SPECIFIED:		NAME	DATE	 laserlinc		LASERLINC, INC. PHONE: 888-707-4892 INFO@LASERLINC.COM WWW.LASERLINC.COM	
DE-BURR AND BREAK ALL SHARP EDGES BEFORE FINISH AND/OR SHIPPING	DIMENSIONS ARE IN INCHES TOLERANCES: ANGLES ±.25 TWO PLACE DECIMAL ±0.010 THREE PLACE DECIMAL ±0.005 FOUR PLACE DECIMAL ±0.0005 UNMARKED FILLETS/CHAMFER .06 DE-BURR ALL PARTS		DRAWN BY:	JWB	10/02/2023				
PROPRIETARY AND CONFIDENTIAL		INTERPRET GEOMETRIC TOLERANCING PER: ASME Y14.5				TITLE: UG460 THRU-WALL INSTALLATION INSTRUCTIONS, TANK SIZE: 8IN X 8IN [203mm X 203mm]			
THE INFORMATION CONTAINED IN THIS DRAWING IS THE SOLE PROPERTY OF LASERLINC, INC. ANY REPRODUCTION IN PART OR AS A WHOLE WITHOUT THE WRITTEN PERMISSION OF LASERLINC, INC IS PROHIBITED.		MATERIAL		63 RA SURFACE FINISH ALL FEATURES MUST MEET SPECIFICATION AFTER PLATING BEFORE POWDER-COAT IF PLATED OR POWDER-COATED SEE FINISH		SIZE	DWG. NO.	REV	
		FINISH				B	UG460 8X8 THRU WALL ADJUST MASTER	A	
		DO NOT SCALE DRAWING				SCALE: 4:5		SHEET 1 OF 8	

	8	7	6	5	4	3	2	1	
	ITEM NO.	PART NUMBER				DESCRIPTION			
F	1	0460-1100-00				UG460 TRANSDUCER SENSOR ASSEMBLY			
	2	0460-0000-28				UG460 Thru-wall Manual Mounting, TANK SIZE: 8in X 8in [203mm X 203mm]			
	3	0460-0000-61				UG460 THRU-WALL ROLLER GUIDE, TANK SIZE: 8in X 8in [203mm X 203mm]			
E									
D									
C									
B									
A									
	8	7	6	5	4	3	2	1	

NOTE:


INDIVIDUAL ITEM NUMBERS IN BALLOONS ARE BASED ON THE ASSEMBLY ITEM NUMBER
FOR EXAMPLE:
ITEMS 2.1 AND 2.2 ARE PARTS OF ASSEMBLY 2
ITEMS 3.1 AND 3.2 ARE PARTS OF ASSEMBLY 3

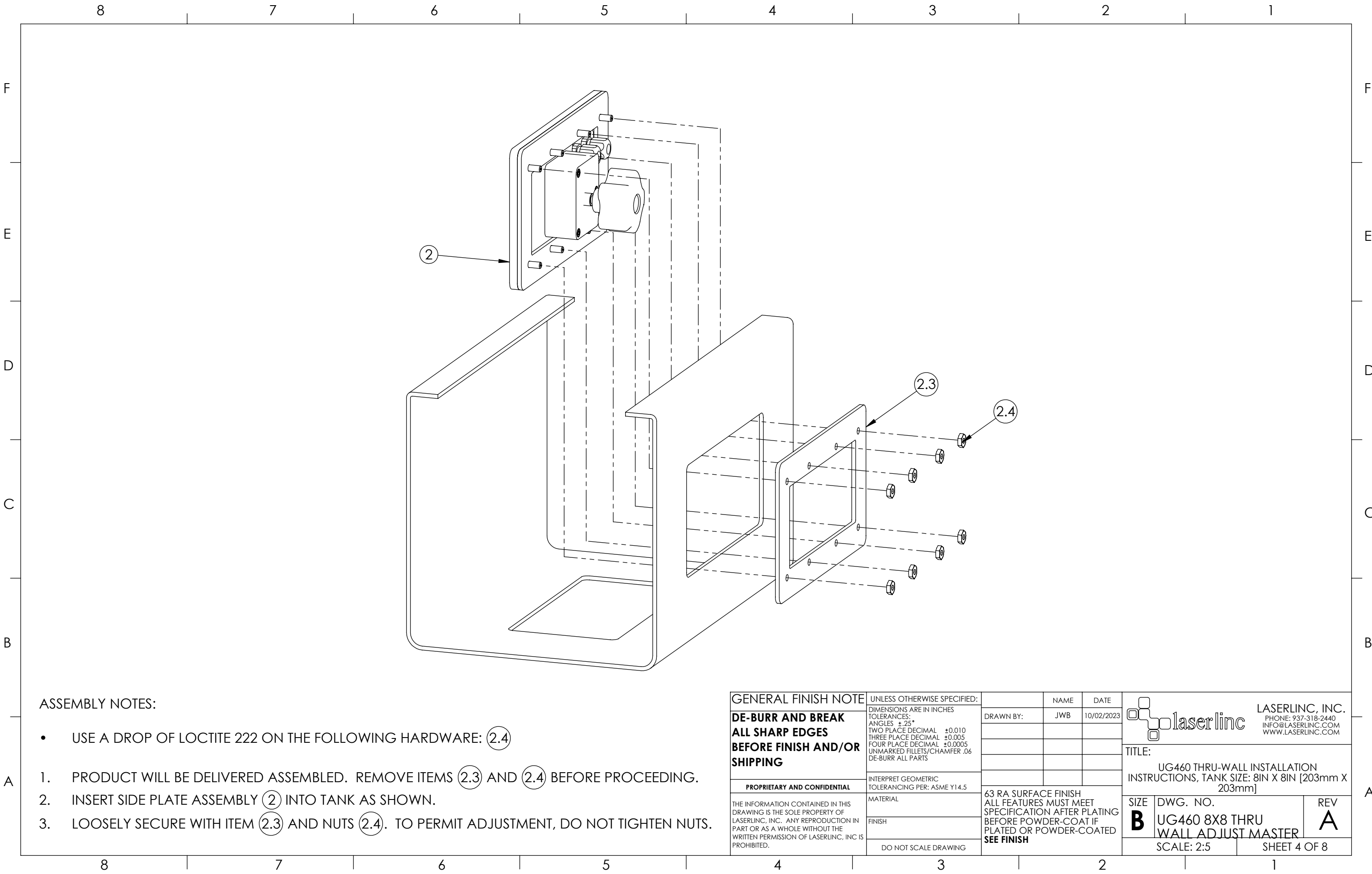
GENERAL FINISH NOTE	UNLESS OTHERWISE SPECIFIED:		NAME	DATE	 LASERLINC, INC. PHONE: 888-707-4892 INFO@LASERLINC.COM WWW.LASERLINC.COM			
DE-BURR AND BREAK ALL SHARP EDGES BEFORE FINISH AND/OR SHIPPING	DIMENSIONS ARE IN INCHES TOLERANCES: ANGLES ±.25° TWO PLACE DECIMAL ±0.010 THREE PLACE DECIMAL ±0.005 FOUR PLACE DECIMAL ±0.0005 UNMARKED FILLETS/CHAMFER .06 DE-BURR ALL PARTS	DRAWN BY:	JWB	10/02/2023				
PROPRIETARY AND CONFIDENTIAL	INTERPRET GEOMETRIC TOLERANCING PER: ASME Y14.5				TITLE: UG460 THRU-WALL INSTALLATION INSTRUCTIONS, TANK SIZE: 8IN X 8IN [203mm X 203mm]			
THE INFORMATION CONTAINED IN THIS DRAWING IS THE SOLE PROPERTY OF LASERLINC, INC. ANY REPRODUCTION IN PART OR AS A WHOLE WITHOUT THE WRITTEN PERMISSION OF LASERLINC, INC IS PROHIBITED.	MATERIAL	63 RA SURFACE FINISH ALL FEATURES MUST MEET SPECIFICATION AFTER PLATING BEFORE POWDER-COAT IF PLATED OR POWDER-COATED SEE FINISH						
	FINISH							
	DO NOT SCALE DRAWING							
		SIZE B	DWG. NO. UG460 8X8 THRU WALL ADJUST MASTER		REV A			
		SCALE: 2:3		SHEET 2 OF 8				



ASSEMBLY NOTE:


- USE A DROP OF LOCTITE 222 ON SCREWS (2.2)
1. MOUNT SENSOR ASSEMBLY (1) TO MOUNTING ASSEMBLY (2) USING SCREWS (2.2). TIGHTEN WITH 5/32" HEX KEY. ENSURE ITEM (2.1) IS ENGAGED WITH SLOT AND CAN MOVE SIDE TO SIDE FREELY.
 2. WRAP TRANSDUCER CABLES AROUND UPRIGHTS. THEY WILL BE INSTALLED WHEN MOUNTING ASSEMBLY TO VACUUM TANK.

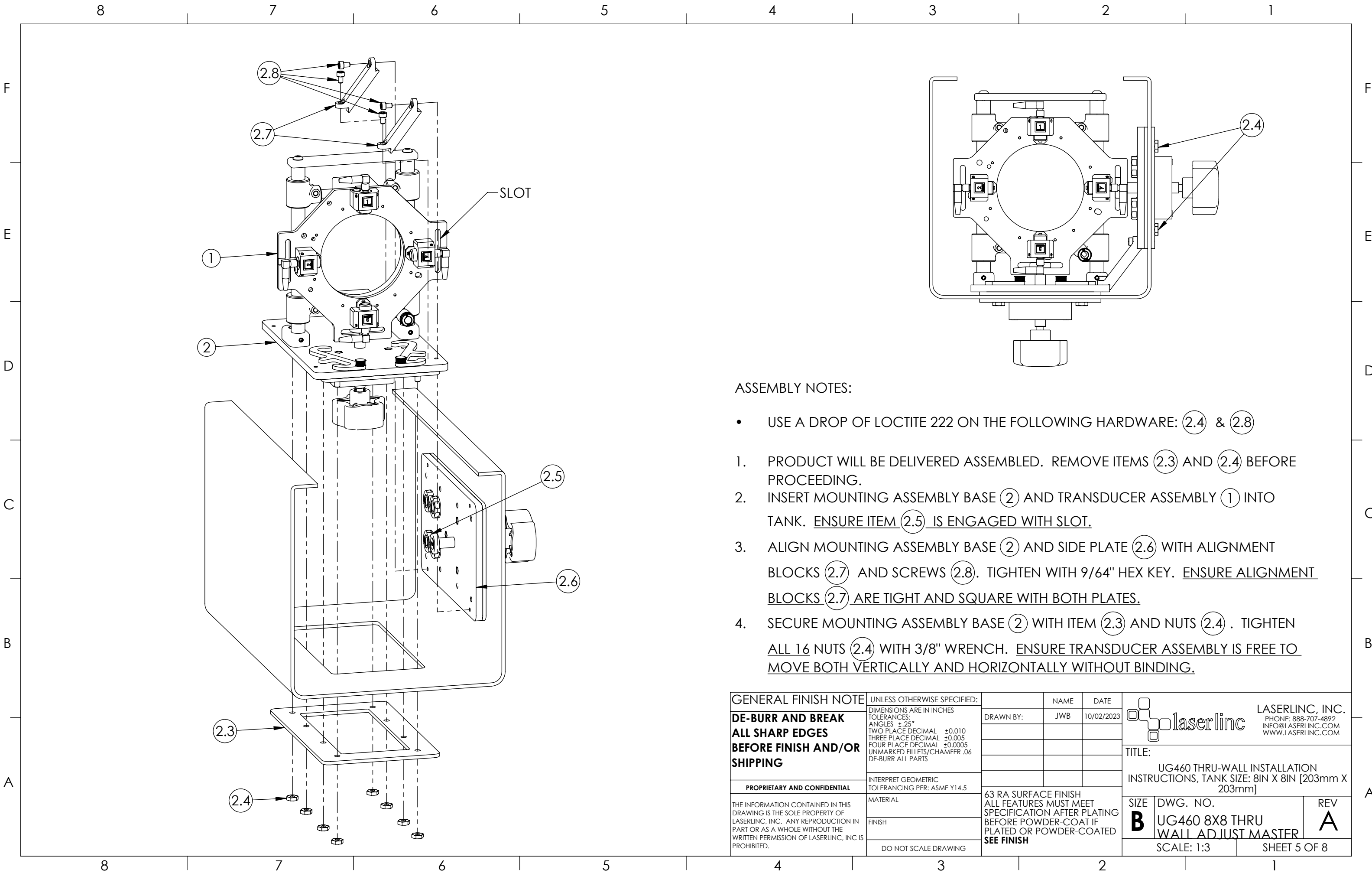
GENERAL FINISH NOTE		UNLESS OTHERWISE SPECIFIED:		NAME	DATE		
DE-BURR AND BREAK ALL SHARP EDGES BEFORE FINISH AND/OR SHIPPING	DIMENSIONS ARE IN INCHES		DRAWN BY:	JWB	10/02/2023		
	TOLERANCES:						
	ANGLES ±.25°						
	TWO PLACE DECIMAL ±0.010						
	THREE PLACE DECIMAL ±0.005						
PROPRIETARY AND CONFIDENTIAL	FOUR PLACE DECIMAL ±0.0005						
	UNMARKED FILLETS/CHAMFER .06						
	DE-BURR ALL PARTS						
	INTERPRET GEOMETRIC TOLERANCING PER: ASME Y14.5						
	MATERIAL		63 RA SURFACE FINISH ALL FEATURES MUST MEET SPECIFICATION AFTER PLATING BEFORE POWDER-COAT IF PLATED OR POWDER-COATED SEE FINISH				
FINISH							
DO NOT SCALE DRAWING							
 laserlinc LASERLINC, INC. PHONE: 937-318-2440 INFO@LASERLINC.COM WWW.LASERLINC.COM							
						TITLE: UG460 THRU-WALL INSTALLATION INSTRUCTIONS, TANK SIZE: 8IN X 8IN [203mm X 203mm]	
THE INFORMATION CONTAINED IN THIS DRAWING IS THE SOLE PROPERTY OF LASERLINC, INC. ANY REPRODUCTION IN PART OR AS A WHOLE WITHOUT THE WRITTEN PERMISSION OF LASERLINC, INC IS PROHIBITED.		SIZE B		DWG. NO. UG460 8X8 THRU WALL ADJUST MASTER		REV A	
		SCALE: 2:3		SHEET 3 OF 8			



ASSEMBLY NOTES:


- USE A DROP OF LOCTITE 222 ON THE FOLLOWING HARDWARE: (2.4)
- PRODUCT WILL BE DELIVERED ASSEMBLED. REMOVE ITEMS (2.3) AND (2.4) BEFORE PROCEEDING.
 - INSERT SIDE PLATE ASSEMBLY (2) INTO TANK AS SHOWN.
 - LOOSELY SECURE WITH ITEM (2.3) AND NUTS (2.4). TO PERMIT ADJUSTMENT, DO NOT TIGHTEN NUTS.

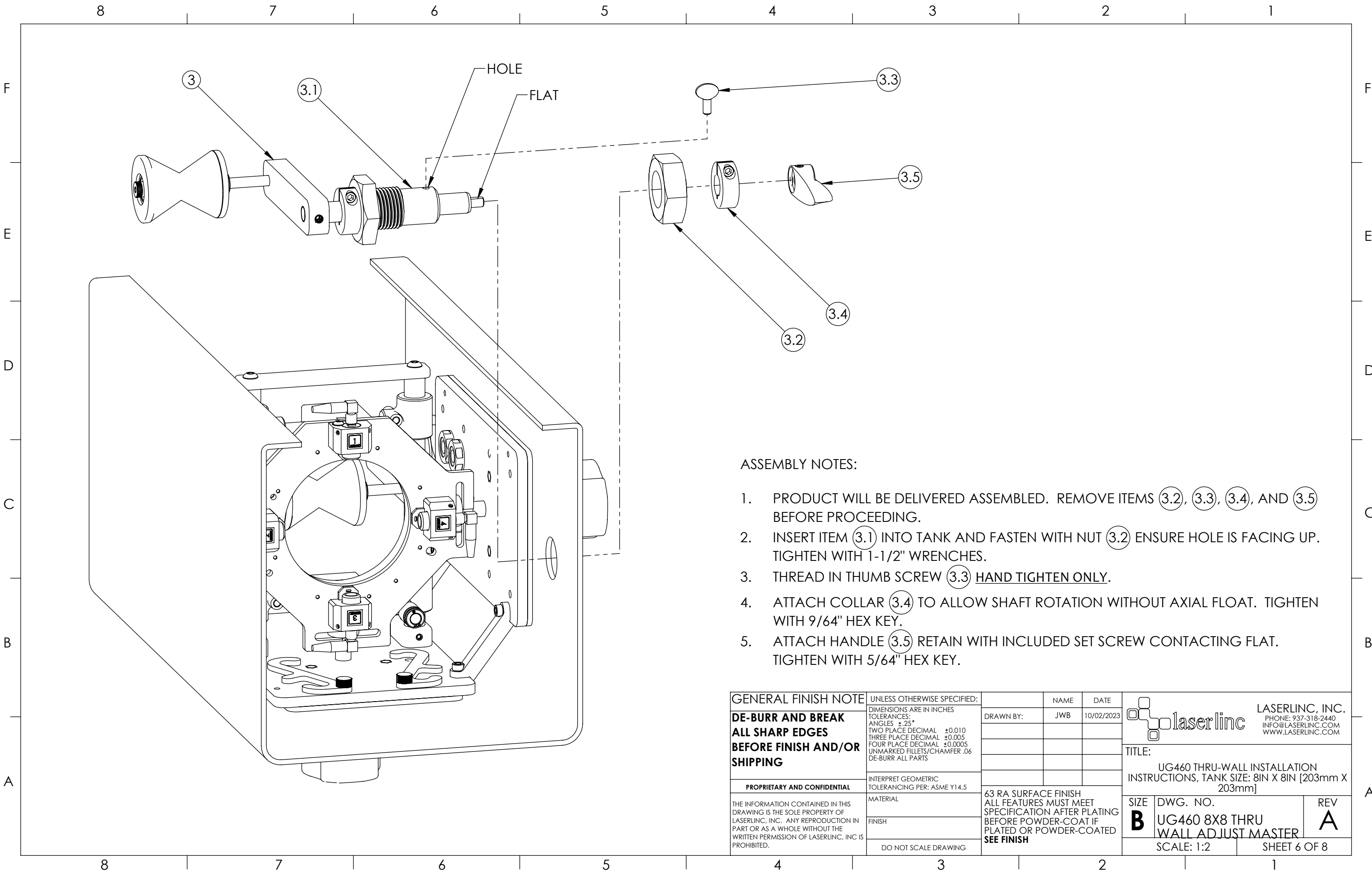
GENERAL FINISH NOTE		UNLESS OTHERWISE SPECIFIED:		NAME	DATE	 LASERLINC, INC. PHONE: 937-318-2440 INFO@LASERLINC.COM WWW.LASERLINC.COM			
DE-BURR AND BREAK ALL SHARP EDGES BEFORE FINISH AND/OR SHIPPING	PROPRIETARY AND CONFIDENTIAL	DIMENSIONS ARE IN INCHES TOLERANCES: • ANGLES ±.25 • TWO PLACE DECIMAL ±0.010 • THREE PLACE DECIMAL ±0.005 • FOUR PLACE DECIMAL ±0.0005 • UNMARKED FILLETS/CHAMFER .06 • DE-BURR ALL PARTS	DRAWN BY:	JWB	10/02/2023				
		INTERPRET GEOMETRIC TOLERANCING PER: ASME Y14.5				TITLE: UG460 THRU-WALL INSTALLATION INSTRUCTIONS, TANK SIZE: 8IN X 8IN [203mm X 203mm]			
THE INFORMATION CONTAINED IN THIS DRAWING IS THE SOLE PROPERTY OF LASERLINC, INC. ANY REPRODUCTION IN PART OR AS A WHOLE WITHOUT THE WRITTEN PERMISSION OF LASERLINC, INC IS PROHIBITED.		MATERIAL	63 RA SURFACE FINISH ALL FEATURES MUST MEET SPECIFICATION AFTER PLATING BEFORE POWDER-COAT IF PLATED OR POWDER-COATED SEE FINISH			SIZE	DWG. NO.	REV	
		FINISH				B	UG460 8X8 THRU WALL ADJUST MASTER	A	
		DO NOT SCALE DRAWING				SCALE: 2:5		SHEET 4 OF 8	



ASSEMBLY NOTES:


- USE A DROP OF LOCTITE 222 ON THE FOLLOWING HARDWARE: (2.4) & (2.8)
- PRODUCT WILL BE DELIVERED ASSEMBLED. REMOVE ITEMS (2.3) AND (2.4) BEFORE PROCEEDING.
- INSERT MOUNTING ASSEMBLY BASE (2) AND TRANSDUCER ASSEMBLY (1) INTO TANK. ENSURE ITEM (2.5) IS ENGAGED WITH SLOT.
- ALIGN MOUNTING ASSEMBLY BASE (2) AND SIDE PLATE (2.6) WITH ALIGNMENT BLOCKS (2.7) AND SCREWS (2.8). TIGHTEN WITH 9/64" HEX KEY. ENSURE ALIGNMENT BLOCKS (2.7) ARE TIGHT AND SQUARE WITH BOTH PLATES.
- SECURE MOUNTING ASSEMBLY BASE (2) WITH ITEM (2.3) AND NUTS (2.4) . TIGHTEN ALL 16 NUTS (2.4) WITH 3/8" WRENCH. ENSURE TRANSDUCER ASSEMBLY IS FREE TO MOVE BOTH VERTICALLY AND HORIZONTALLY WITHOUT BINDING.

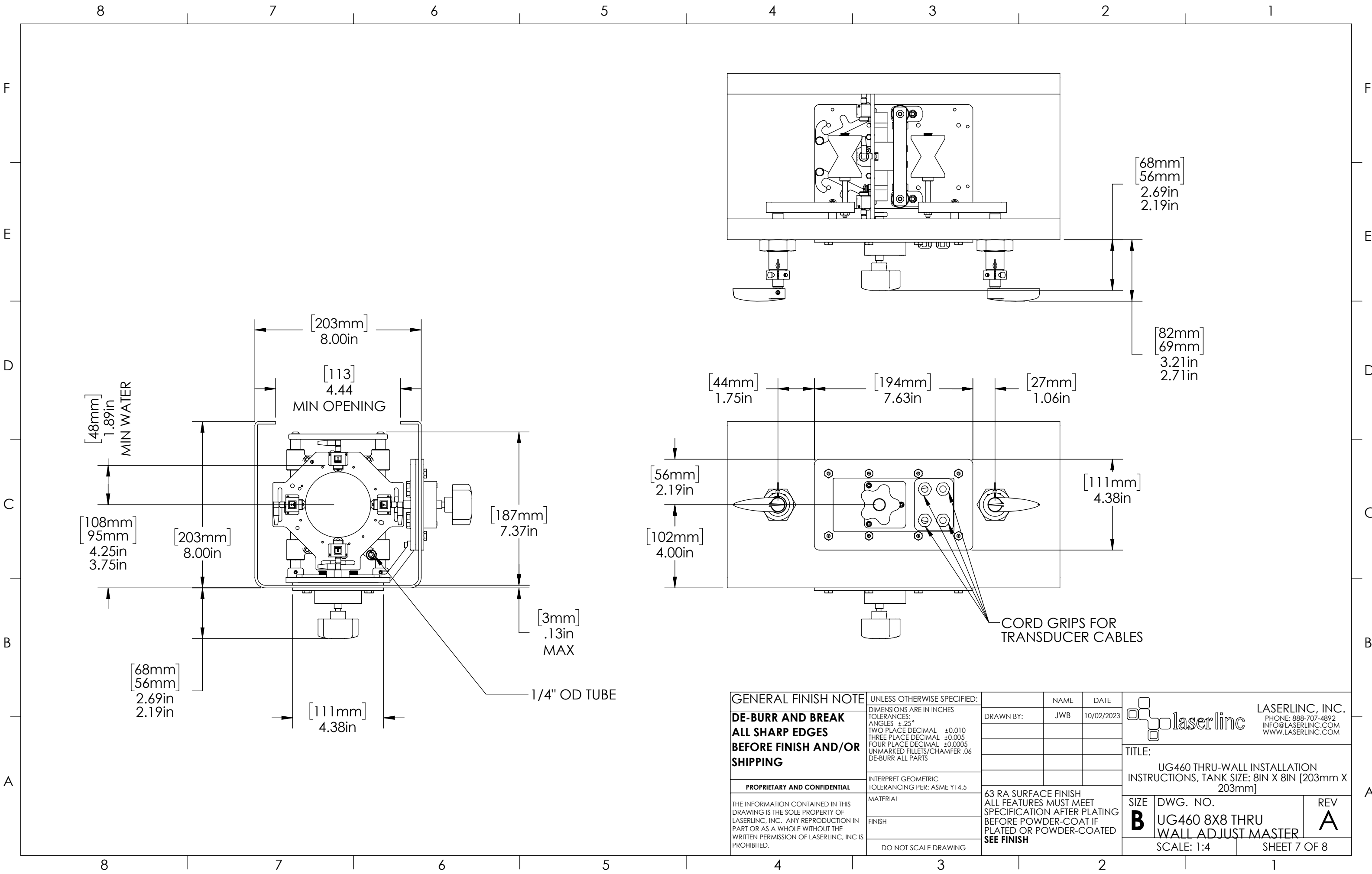
GENERAL FINISH NOTE		UNLESS OTHERWISE SPECIFIED:		NAME	DATE	 <div>LASERLINC, INC. PHONE: 888-707-4892 INFO@LASERLINC.COM WWW.LASERLINC.COM</div>	
DE-BURR AND BREAK ALL SHARP EDGES BEFORE FINISH AND/OR SHIPPING	DIMENSIONS ARE IN INCHES TOLERANCES: ANGLES $\pm .25^\circ$ TWO PLACE DECIMAL ± 0.010 THREE PLACE DECIMAL ± 0.005 FOUR PLACE DECIMAL ± 0.0005 UNMARKED FILLETS/CHAMFER .06 DE-BURR ALL PARTS	DRAWN BY:	JWB	10/02/2023			
PROPRIETARY AND CONFIDENTIAL	INTERPRET GEOMETRIC TOLERANCING PER: ASME Y14.5				TITLE: UG460 THRU-WALL INSTALLATION INSTRUCTIONS, TANK SIZE: 8IN X 8IN [203mm X 203mm]		
THE INFORMATION CONTAINED IN THIS DRAWING IS THE SOLE PROPERTY OF LASERLINC, INC. ANY REPRODUCTION IN PART OR AS A WHOLE WITHOUT THE WRITTEN PERMISSION OF LASERLINC, INC IS PROHIBITED.	MATERIAL	63 RA SURFACE FINISH ALL FEATURES MUST MEET SPECIFICATION AFTER PLATING BEFORE POWDER-COAT IF PLATED OR POWDER-COATED SEE FINISH			SIZE	DWG. NO.	REV
	FINISH				B	UG460 8X8 THRU WALL ADJUST MASTER	A
	DO NOT SCALE DRAWING				SCALE: 1:3		SHEET 5 OF 8




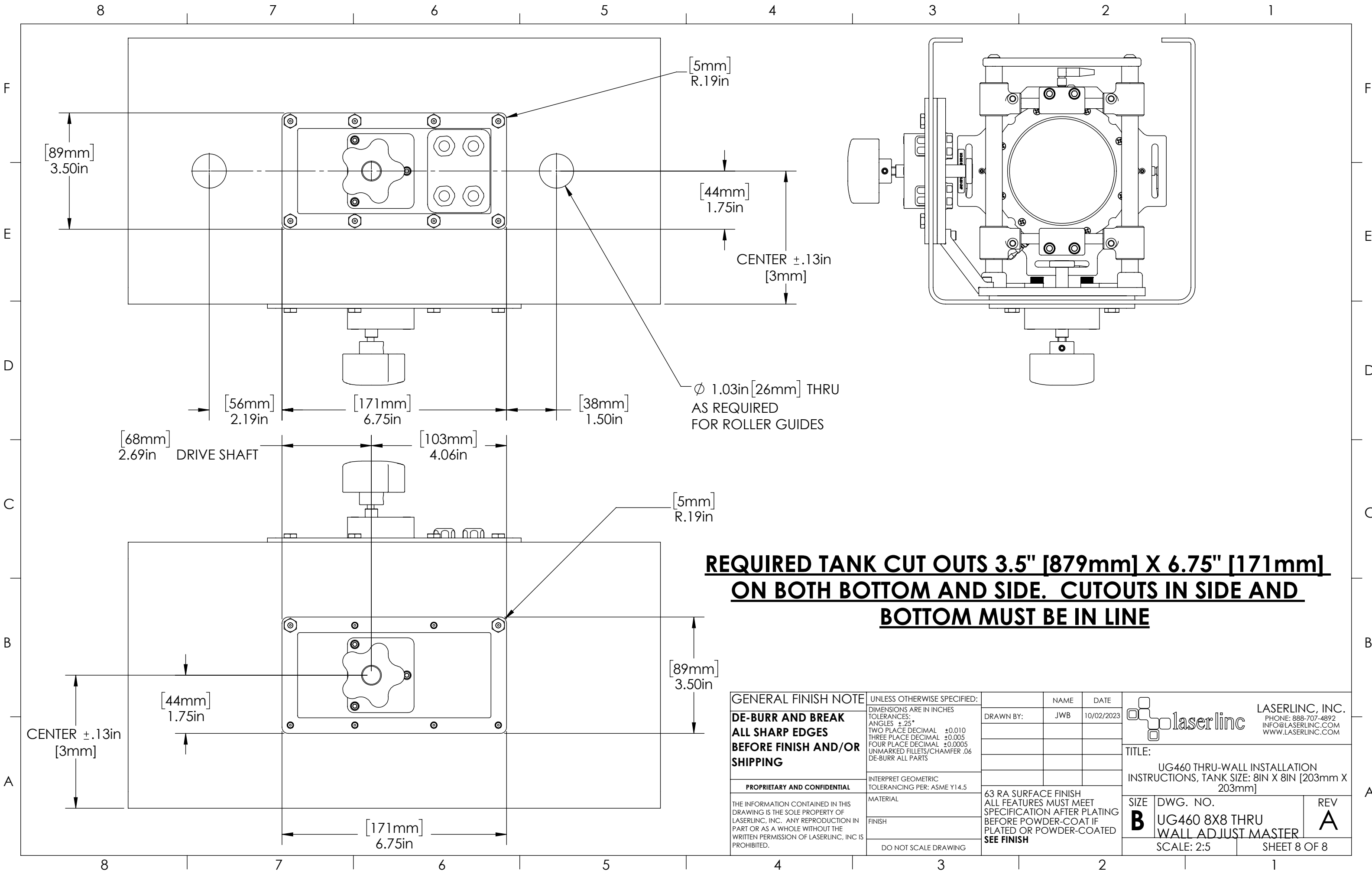
ASSEMBLY NOTES:

1. PRODUCT WILL BE DELIVERED ASSEMBLED. REMOVE ITEMS (3.2), (3.3), (3.4), AND (3.5) BEFORE PROCEEDING.
2. INSERT ITEM (3.1) INTO TANK AND FASTEN WITH NUT (3.2) ENSURE HOLE IS FACING UP. TIGHTEN WITH 1-1/2" WRENCHES.
3. THREAD IN THUMB SCREW (3.3) HAND TIGHTEN ONLY.
4. ATTACH COLLAR (3.4) TO ALLOW SHAFT ROTATION WITHOUT AXIAL FLOAT. TIGHTEN WITH 9/64" HEX KEY.
5. ATTACH HANDLE (3.5) RETAIN WITH INCLUDED SET SCREW CONTACTING FLAT. TIGHTEN WITH 5/64" HEX KEY.


GENERAL FINISH NOTE		UNLESS OTHERWISE SPECIFIED:		NAME	DATE	 laserlinc		LASERLINC, INC. PHONE: 937-318-2440 INFO@LASERLINC.COM WWW.LASERLINC.COM	
DE-BURR AND BREAK ALL SHARP EDGES BEFORE FINISH AND/OR SHIPPING		DIMENSIONS ARE IN INCHES TOLERANCES: ANGLES $\pm .25^\circ$ TWO PLACE DECIMAL ± 0.010 THREE PLACE DECIMAL ± 0.005 FOUR PLACE DECIMAL ± 0.0005 UNMARKED FILLETS/CHAMFER .06 DE-BURR ALL PARTS		DRAWN BY:	JWB				
PROPRIETARY AND CONFIDENTIAL		INTERPRET GEOMETRIC TOLERANCING PER: ASME Y14.5					TITLE: UG460 THRU-WALL INSTALLATION INSTRUCTIONS, TANK SIZE: 8IN X 8IN [203mm X 203mm]		
THE INFORMATION CONTAINED IN THIS DRAWING IS THE SOLE PROPERTY OF LASERLINC, INC. ANY REPRODUCTION IN PART OR AS A WHOLE WITHOUT THE WRITTEN PERMISSION OF LASERLINC, INC IS PROHIBITED.		MATERIAL		63 RA SURFACE FINISH ALL FEATURES MUST MEET SPECIFICATION AFTER PLATING BEFORE POWDER-COAT IF PLATED OR POWDER-COATED SEE FINISH			SIZE	DWG. NO.	REV
		FINISH					B	UG460 8X8 THRU WALL ADJUST MASTER	A
		DO NOT SCALE DRAWING					SCALE: 1:2		



GENERAL FINISH NOTE		UNLESS OTHERWISE SPECIFIED:		NAME	DATE	 <div>LASERLINC, INC. PHONE: 888-707-4892 INFO@LASERLINC.COM WWW.LASERLINC.COM</div>		
DE-BURR AND BREAK ALL SHARP EDGES BEFORE FINISH AND/OR SHIPPING	DIMENSIONS ARE IN INCHES TOLERANCES: ANGLES ±.25° TWO PLACE DECIMAL ±0.010 THREE PLACE DECIMAL ±0.005 FOUR PLACE DECIMAL ±0.0005 UNMARKED FILLETS/CHAMFER .06 DE-BURR ALL PARTS		DRAWN BY:	JWB	10/02/2023			
PROPRIETARY AND CONFIDENTIAL	INTERPRET GEOMETRIC TOLERANCING PER: ASME Y14.5					TITLE: UG460 THRU-WALL INSTALLATION INSTRUCTIONS, TANK SIZE: 8IN X 8IN [203mm X 203mm]		
THE INFORMATION CONTAINED IN THIS DRAWING IS THE SOLE PROPERTY OF LASERLINC, INC. ANY REPRODUCTION IN PART OR AS A WHOLE WITHOUT THE WRITTEN PERMISSION OF LASERLINC, INC IS PROHIBITED.	MATERIAL		63 RA SURFACE FINISH ALL FEATURES MUST MEET SPECIFICATION AFTER PLATING BEFORE POWDER-COAT IF PLATED OR POWDER-COATED SEE FINISH			SIZE	DWG. NO.	REV
	FINISH					B	UG460 8X8 THRU WALL ADJUST MASTER	A
	DO NOT SCALE DRAWING					SCALE: 1:4		SHEET 7 OF 8



REQUIRED TANK CUT OUTS 3.5" [879mm] X 6.75" [171mm]
ON BOTH BOTTOM AND SIDE. CUTOUTS IN SIDE AND
BOTTOM MUST BE IN LINE

GENERAL FINISH NOTE		UNLESS OTHERWISE SPECIFIED:			NAME	DATE			LASERLINC, INC. PHONE: 888-707-4892 INFO@LASERLINC.COM WWW.LASERLINC.COM		
DE-BURR AND BREAK ALL SHARP EDGES BEFORE FINISH AND/OR SHIPPING		DIMENSIONS ARE IN INCHES TOLERANCES: ANGLES ±.25° TWO PLACE DECIMAL ±0.010 THREE PLACE DECIMAL ±0.005 FOUR PLACE DECIMAL ±0.0005 UNMARKED FILLETS/CHAMFER .06 DE-BURR ALL PARTS		DRAWN BY:	JWB	10/02/2023					
PROPRIETARY AND CONFIDENTIAL		INTERPRET GEOMETRIC TOLERANCING PER: ASME Y14.5					TITLE: UG460 THRU-WALL INSTALLATION INSTRUCTIONS, TANK SIZE: 8IN X 8IN [203mm X 203mm]				
THE INFORMATION CONTAINED IN THIS DRAWING IS THE SOLE PROPERTY OF LASERLINC, INC. ANY REPRODUCTION IN PART OR AS A WHOLE WITHOUT THE WRITTEN PERMISSION OF LASERLINC, INC IS PROHIBITED.		MATERIAL		63 RA SURFACE FINISH ALL FEATURES MUST MEET SPECIFICATION AFTER PLATING BEFORE POWDER-COAT IF PLATED OR POWDER-COATED SEE FINISH			SIZE	DWG. NO.	REV		
		FINISH					B	UG460 8X8 THRU WALL ADJUST MASTER	A		
		DO NOT SCALE DRAWING					SCALE: 2:5				SHEET 8 OF 8